



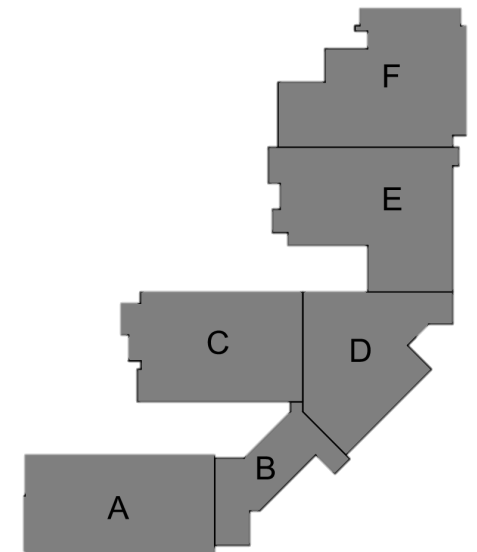
# Mary E. Britton Middle School

## ➤ Completed Work:

- Complete ICF Building A and C
- Continue ICF at Storm Shelter and Area E
- Continue Masonry at Cafeteria/Gym Wall
- Continue Winter Conditioning at Area A, C and Gym
- Test Gym and Locker Room to receive Block Filler
- Continue brick veneer work
- Continue Roof Decking Area A and Area C
- Start Roof Decking at Cafeteria
- Continue Sprinkler and MEP Rough Ins all Areas
- Continue Geothermal Piping under ground
- Start Field Measuring for Casework and Lockers

## ➤ Upcoming Work/Look Ahead:

- Set up Temporary Heaters in Gym and Area A
- Continue ICF Area E
- Continue Masonry at Area E and Area B/D to roof bearing elevation
- Start Block Fill in Gym and locker Room
- Finish 4" CMU at Mechanical Room
- Continue MEP and Sprinkler Rough Ins
- Finish Roof Joist and Decking Areas A and C
- Deck and Joist at Cafeteria
- Grout remaining Hollow Core Planks
- Set up for next topping slab pour
- Continue Geothermal System



# Mary E. Britton Middle School



Area A and C – Steel Roof Deck Ongoing



Week Ending January 12, 2024

# Mary E. Britton Middle School



Area B – Main Vestibule ICF Walls Complete



Week Ending January 12, 2024

# Mary E. Britton Middle School



## Area C – End Wall Concrete Pour



Week Ending January 12, 2024

# Mary E. Britton Middle School

## Area D – Stala Frame Install



Week Ending January 12, 2024

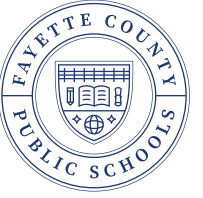


# Mary E. Britton Middle School

Area E – Cafeteria ICF High Walls Complete



Week Ending January 12, 2024



# Mary E. Britton Middle School

Area E – Corridor CMU Walls Ongoing



Week Ending January 12, 2024

# Mary E. Britton Middle School

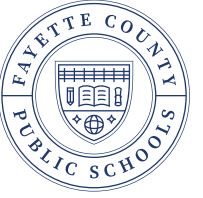


## Area E – Storm Shelter ICF Continues

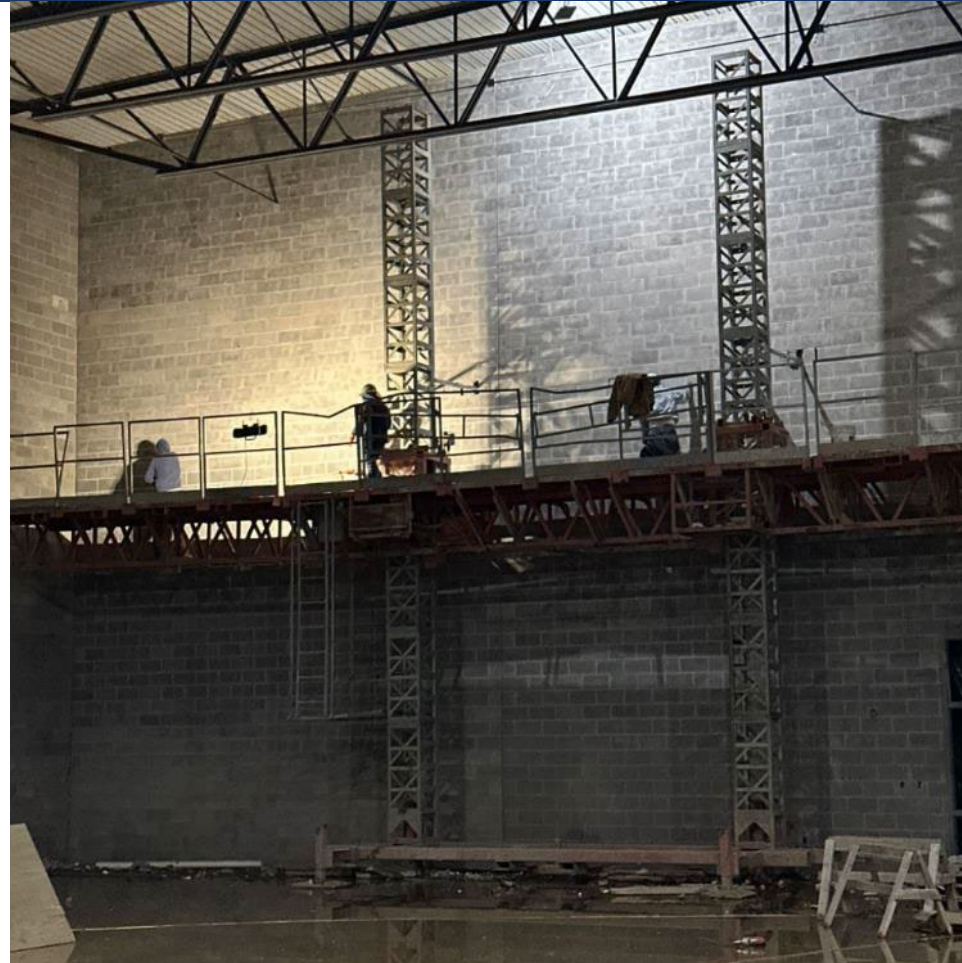


Week Ending January 12, 2024

# Mary E. Britton Middle School



## Area F – Gym Wall Prep for Block Filler



Week Ending January 12, 2024