

Career Pathways

Exploration & Planning Guide

2023-2024

Educating all learners for tomorrow's world.



WEST FARGO
PUBLIC SCHOOLS



Career Planning Overview

- 4 North Dakota Choice Ready
- 5 Graduation Requirements
- 32 Career Ready Work Experience
- 33 Extended Learning Experience
- 34 Counselor Contacts
- 35 Profile of a Graduate

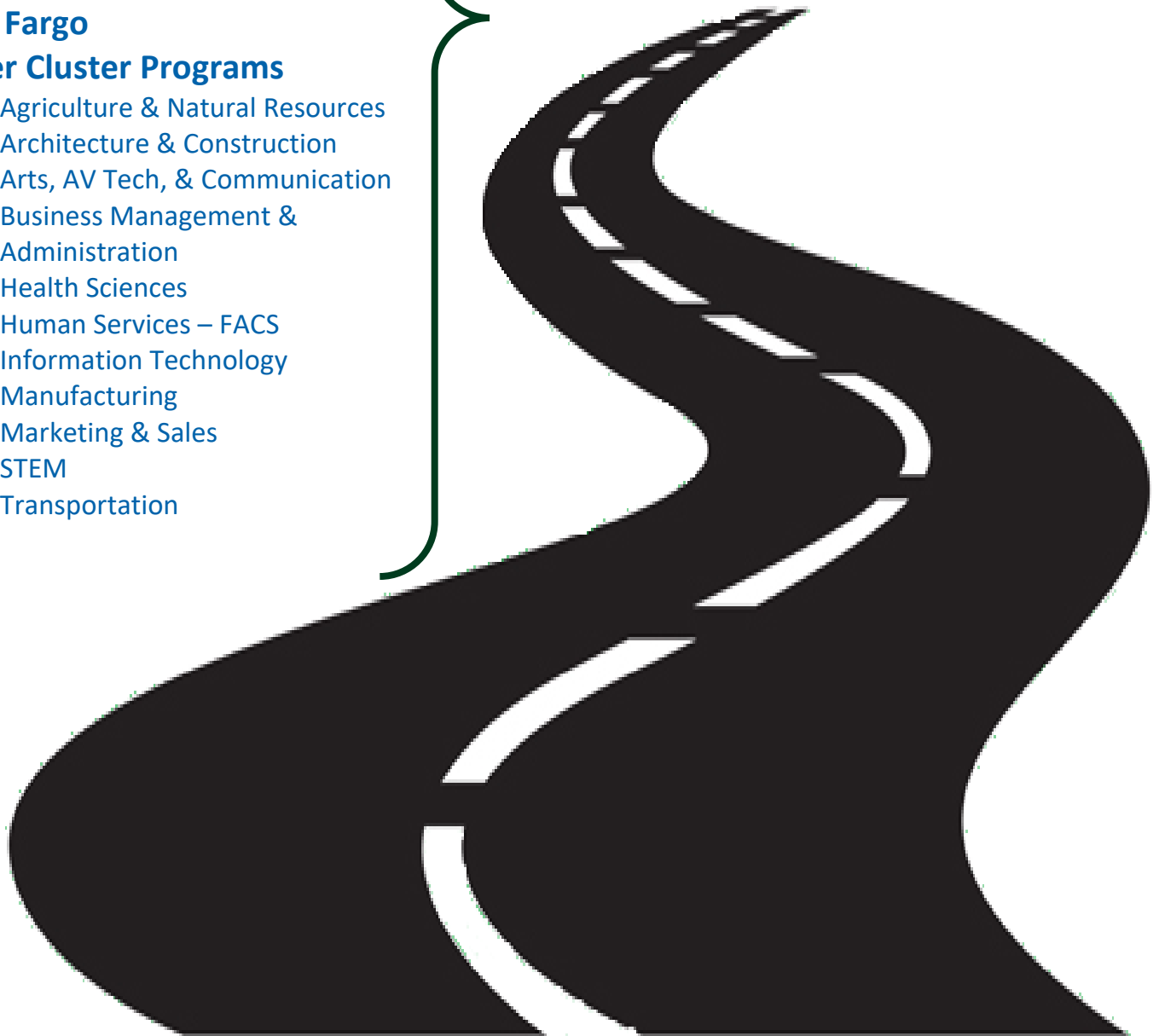
Planning & Support

- 6 Academic & CTE Scholarship
- 7 North Dakota Scholarship
- 8 Career Pathways
- 9 Career Planning
- 36 Four-Year Plan Template

West Fargo

Career Cluster Programs

- 10 Agriculture & Natural Resources
- 12 Architecture & Construction
- 14 Arts, AV Tech, & Communication
- 16 Business Management & Administration
- 18 Health Sciences
- 20 Human Services – FACS
- 22 Information Technology
- 24 Manufacturing
- 26 Marketing & Sales
- 28 STEM
- 30 Transportation





Dear Learners, Parents, and Community Members:

Learners are often asked, “What do you want to be when you grow up?”

As we embark on personalized learnings, the narrative has changed to, “What do you know about yourself and what would you like to do to make a difference in your future?”

West Fargo Public School’s mission is “Educating all learners for tomorrow’s world!” District strategic goals focused on Wellness, Academics, and Choice Ready create the foundation for personalized learning. The Choice Ready vision, *“All learners are empowered to identify their passions, skills, and purpose, set goals, and determine a personalized pathway to thrive and contribute responsibly to the local and global community.”*

From kindergarten through elementary, middle school to high school, learners in West Fargo Public Schools are afforded access to academic, social emotional, career-based, and extra-curricular activities to begin this journey. Academic foundations provide the knowledge and essential skills learners need to be successful across all disciplines. Self-efficacy, agency, and nurturing relationships support emotional well-being. Extra-curricular experiences promote teamwork, leadership, and perseverance. Career-based curriculums open the door for goal-setting, reflection, and career exploration to engage and empower students in their own learning and discovery in passion areas.

At a deeper level, career and technical education and academic elective courses are designed to enrich learning to expand career awareness, real-world projects, industry aligned skills, technology integration, job shadowing, and post-secondary partnerships. Learner self-reflection compels students to discover interests and acknowledge aptitudes which can set the stage for beginning exploration of career pathways in high school.

The Career Pathways booklet is a resource to inform learners and families on this quest to:

- provide awareness of the 16 Career Clusters for career discovery
- outline the coursework for West Fargo career pathways
- communicate essential information to learners, parents, staff, and community stakeholders
- connect high school academic and career and technical education coursework with students to begin career exploration
- align student interests and aptitude with career pathways
- inform learners about future viable job opportunities related to each career pathway
- provide information about North Dakota post-secondary colleges and degree programs aligned to each career pathway
- provide parents and students with tools to plan and make informed decisions
- promote requirements to be eligible for the North Dakota Academic, CTE scholarship and Choice-Ready indicators
- outline West Fargo graduation requirements and Profile of a Graduate disposition
- communicate important assessments for self-reflection and college preparation
- connect essential career support resources with students and families

With so many career options to choose from, making the most of the high school experience is the goal! The Career Pathway Guide is a resource to inform and begin intentional four-year planning to ensure all West Fargo learners graduate Choice-Ready, and ultimately, reflect on themselves to make informed decisions and the first next step in their pathway to success after graduation.

NORTH DAKOTA CHOICE READY

The North Dakota CHOICE READY framework is a tool to assist educators to ensure all students successfully depart high school possessing the ESSENTIAL SKILLS necessary to be ready for life. The journey begins by ensuring students leave having the ESSENTIAL SKILLS to be successful for whichever path they choose. Students shall then strive to be POST-SECONDARY READY, WORKFORCE READY, and/or MILITARY READY.



ESSENTIAL SKILLS

Earn a *North Dakota high school diploma*

Complete a **9-week Career Education/Individual Counseling** (15.1-21-18), **Financial Literacy** (15.1-21-21), and pass **ND Civics Test** (15.1-21-27) and **four or more** additional indicators:

- 25 hours of Community Service
- 95% Attendance (not counting school related absences)
- Career Exploration Experience
- Two or more years in organized Co-Curricular Activities
- Two or more years in organized Extra-Curricular Activities
- Successfully complete a Capstone Project
- Successfully complete an on-line learning course
- Demonstrate competency in 21st Century Skills

Students shall then complete **two or more** of the **CHOICE READY** components below.



POST-SECONDARY READY

Complete a **Four-Year Rolling Career Plan**, earn a **2.8 GPA or greater**, and complete one academic indicator set below:

ACT / SAT minimum or subsection scores

- ACT English – 18
- ACT Reading – 22
- ACT Math – 21
- ACT Science – 23
- SAT Reading/Writing – 480
- SAT Math – 530

OR

Two or more additional indicators:

- Advanced Placement Course (A, B or C) (4, 3, or 2)
- Dual Credit Course (English or Math) (A, B or C) or (4, 3, or 2)
- Algebra II (A, B or C) or (4, 3, or 2)
- Advance Placement Exam (3+)
- International Baccalaureate Exam (4+)
- 3.0 GPA in core course requirement for NDUS admission
- CLEM/CREAM (Eng./Math) Course (70% or greater)
- Complete three Fine Arts Courses (A, B or C) (4, 3, or 2)



WORKFORCE READY

Complete a **Four-Year Rolling Career Plan**, and complete two or more additional indicators:

- Complete three CTE courses or more (A, B or C) or (4, 3, or 2)
- Complete Career Ready Practices (3.0)
- Dual Credit Course (A, B or C) or (4, 3, or 2)
- WorkKeys (Gold or Silver)
- Technical Assessment / Industry Credential
- Workplace Learning Experience (40 hours)
- Work-based Learning Experience (Perkins V) (40 hrs.)
- NDSA (Reading/Math) Level 3 or greater or (ACT for Accountability: English 19/Mathematics 22)
- Complete three World Language Courses (A, B or C) or (4, 3, or 2)



MILITARY READY

- Complete a **Four-Year Rolling Career Plan**,
- ASVAB score of 31 or greater** (as determined by branch),
- Quality Citizenship** (No Expulsions/Suspensions), **Physically Fit**, and
- Complete **two or more** additional indicators from the **Post-Secondary** or **Workforce** options.

West Fargo Graduation Requirements



The proper selection of courses by students is an important matter. It is vital to the students that each course should be carefully selected as an integral part of the student's four-year educational plan. Course selections are equally important to the school district for upcoming staffing commitments. Therefore, changes in student course selections after July 1 will only be made in cases of extreme hardship. All changes must have the approval of the school assistant principals or principal.

Classes	Credits
English.....	4
Math.....	3
• At least 1 credit in Basic Math, Pre-Algebra, or Algebra I.	
• One unit of computer science approved by the DPI.	
Science.....	3
• Physical Science (or 1 year of Physics + 1 year of Chemistry), Biology, & 1 more	
Physical Education.....	1.5
• Approximately 0.5 credit per year	
Health.....	0.5
Social Studies (listed below)	
• World Geography.....	0.5
• Western Civilization.....	1
• US History.....	1
• US Government.....	0.5
• Economics.....	0.5
Required Credits	15.5
Elective Credits	7.5
• Out of 7.5 credits of electives, 3 must be a combination of World Language, Fine Arts, or Career & Technical Education	
Credits Required for Graduation	23.0

To qualify for graduation, a senior must have enrolled in a high school during grades 9, 10, 11 and 12 for four separate school year terms. An exception to this policy may be made for students if they have the approval of their parents and the principal. In addition, according to school board policy, students must have completed all requirements for the high school diploma in order to participate in commencement exercises.

Students shall be enrolled each year in courses that will give them at least 6 credits unless the principal has granted permission to take a reduced load. Additional courses may be taken from the list of electives each year to meet the minimum requirements.

Students must make an effort to make up any course failures through summer school or correspondence before the next fall term starts. Courses failed and not made up by the beginning of the next school year must be scheduled for that school year. Special permission must be obtained to take further courses in the same field until failures have been removed.

Academic & CTE Scholarship

North Dakota resident students may apply for either the North Dakota Scholarship to attend any North Dakota institution of higher education. The amount of each scholarship is \$750 per semester or \$500 per quarter. Students may be eligible for up to \$6,000 within six academic school years (do not have to be consecutive years) after graduation from high school. Applications are submitted online and will be accepted from January 4 - June 4, 2021. (One Unit = One Full Credit)

The new North Dakota scholarship was created during the 2021 Legislative Session by SB 2289. It will gradually replace the current Academic and CTE Scholarships. Students graduating in 2023 or 2024 can use either the old (Academic/CTE Scholarship) requirements, or the new North Dakota Scholarship requirements. Starting with the graduating class of 2025, students can only use the new North Dakota Scholarship requirements (see page 7).

Common Requirements for Both Scholarships

1. ND resident graduating from a ND high school, a public high school in a bordering state according to NDCC 15.1-29, **or** a nonpublic school in a bordering state while residing with a custodial parent in ND (NDCC 15.1-21-02.4), **or** (15.1-21-02.5) completes a program of home education supervised in accordance with NDCC chapter 15.1-23
2. Any 4 units of English
3. 3 units of Science: Biology (1 unit), and either Physics (1 unit) AND Chemistry (1 unit) **or** Physical Science (1 unit) AND any other science course (1 unit)
4. 3 units of Social Studies: US History (1 unit), Problems of Democracy (1 unit) **or** US Government (½ unit) AND Economics (½ unit), and any other social studies course (1 unit)
5. 3 units of Mathematics: Algebra II (1 unit) and any other math courses (2 units). This may include a computer science course (1 unit) approved by the Superintendent of Public Instruction.
6. Physical education (1 unit) **or** physical education (½ unit) AND Health (½ unit)
7. Earn no grade lower than a “C” on any unit required for the scholarship
8. Earn a cumulative GPA of a 3.0 or higher on a 4.0 scale

ND Academic Scholarship

1. Complete: 1 unit of math for which Algebra II is a prerequisite; 2 units of the same foreign language, the same Native American language, American Sign Language, **or** 2 units of CTE from a coordinated plan of study or the 3 credit educational pathway approved by NDDPI
2. Any 5 additional units
3. Complete 1 unit of an AP course AND exam, **or** ½ unit of a dual credit course, **or** 1 unit of an early entrance college course from a college which has a physical presence in North Dakota
4. Earn a composite score of 24 or higher on an ACT

ND Career and Technical Education Scholarship

1. Complete: 4 units of CTE in which two units must be in a coordinated plan of study **or** 2 units of CTE and the 3 credit educational pathway approved by NDDPI
2. Any 3 additional units
3. Earn a composite score of 24 or higher on an ACT **or** score of at least “5” on each of the 3 designated WorkKeys assessments.

North Dakota Scholarship



ESSENTIAL SKILLS

- Earn a **North Dakota high school diploma**
- Complete a **9-week Career Education/Individual Counseling** (15.1-21-18), **Financial Literacy** (15.1-21-21), and pass **ND Civics Test** (15.1-21-27) and **four or more** additional indicators:
 - 25 hours of Community Service
 - 95% Attendance (not counting school related absences)
 - Career Exploration Experience
 - Two or more years in organized Co-Curricular Activities
 - Two or more years in organized Extra-Curricular Activities
 - Successfully complete a Capstone Project
 - Successfully complete an on-line learning course
 - Demonstrate competency in 21st Century Skills

Students shall then complete **two or more** of the **CHOICE READY** components below.



POST-SECONDARY READY

Complete a **Four-Year Rolling Career Plan**, earn a **2.8 GPA or greater**, and complete one academic indicator set below:

ACT / SAT minimum or subsection scores

- ACT composite of 24, or
- SAT composite of 1180

and

Two or more additional indicators:

- Advanced Placement Course (A, B or C) (4, 3, or 2)
- Dual Credit Course (English or Math) (A, B or C) or (4, 3, or 2)
- Algebra II (A, B or C) or (4, 3, or 2)
- Advance Placement Exam (3+)
- International Baccalaureate Exam (4+)
- 3.0 GPA in core course requirement for NDUS admission



WORKFORCE READY

Complete both indicator sets below:

- 4 credits of CTE with 2 credits in the same plan of study
- ACT of 24, or 5 higher on all three WorkKeys tests

and

- Complete Career Ready Practices Course
- Dual Credit Course (A, B or C) or (4, 3, or 2)
- Technical Assessment / Industry Credential
- Workplace Learning Experience (40 hours)
- Work-based Learning Experience (Perkins V) (40 hrs.)
- NDSA (Reading/Math) Level 3 or greater or (ACT for Accountability: English 19/Mathematics 22)



MILITARY READY

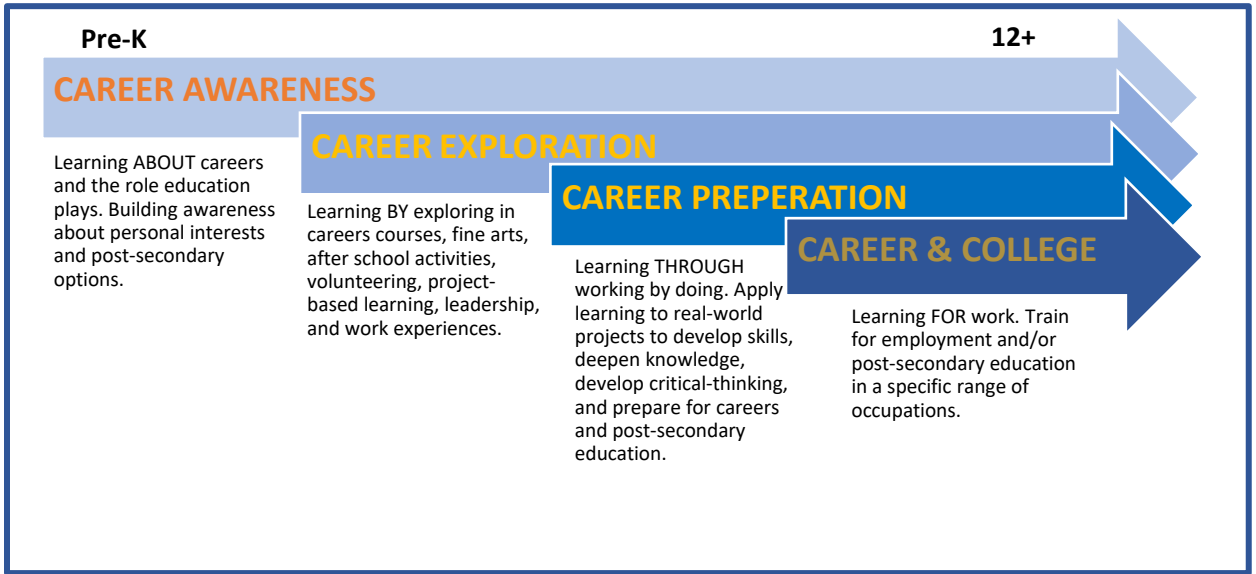
Complete all three indicators below:

- ASVAB score of 85 or greater**, or ASVAB score of 31 or greater and have completed Basic Training;
- Physically Fit** – Have successfully completed required PE courses (A, B or C) (4, 3, or 2); and
- Complete **two or more** additional indicators from the **Post-Secondary** or **Workforce** options.

CAREER PATHWAYS

**What are your passions?
Can you identify your strengths and skills?
Where do you see yourself after high school?**

The Career Pathway process allows you to explore who you are, discover interests, and select courses to help you think critically, develop creativity, communicate, collaborate, and prepare a plan for high school and your future!



What are career pathways?

They are 16 clusters of careers sharing common interests, skills, and strengths. Each pathway outlines the courses that will help you explore content and develop skills necessary for each career cluster. Since there are many roads to success, you are not locked into one pathway. If you change your mind, you can explore another pathway.



How will you know which pathway is a good fit?

Interest inventories and surveys help learners uncover aptitudes. Results reviewed with the School Counselor, Career Advisor, and parents can guide learners on course selections that best align for exploration in a pathway. Part-time jobs, job shadowing, and volunteering in real world settings are a good way to gain valuable experience and insight into future career choices.

← WEST FARGO K-12 STEPS TO YOUR CAREER PATHWAY →

Career Awareness		Career Exploration	Career Preparation
K Career Lessons – STEM & engineering	1st Junior Achievement	6th Career Cluster Interests & Passions Careers on Wheels	9th Career Lessons/Ramp Up R U Ready Interest Profiler Career Expo & Research Pre-ACT, College Fair
2nd Career Lessons – traditional and nontraditional occupations			
3rd Junior Achievement PAWS - personal skills, interests and abilities	4th Career Interest Inventory Select careers choices based on my personal skills, interests and abilities	7th RU Ready Work Multiple Intelligences and Career Exploration	10th Career Lessons/Ramp Up College Fair, Career Fair PSAT, ASVAB, Pre-ACT, SAT optional
5th Career Lessons – Develop skills to locate, evaluate and interpret careers Transition to Middle School			
		8th RU Ready Career Cluster Survey Goal Setting – POS & 4-Year Plans ND State Scholarships College Resources	11th Career Lessons/Ramp Up Personality Inventory PSAT, ACT, SAT optional Mock Interviews College Fair & Career Fair
			12th Career Lesson/Ramp Up Senior Meetings College Application WorkKeys optional

Four-Year Rolling Plan

1. Complete career interest assessments and view results at www.ruready.nd.gov.
2. Look up course descriptions in the [Program of Studies](#) and complete a 4-Year Plan to include required courses and career specific electives toward a Career Pathway.
3. Meet with School Counselor and/or Career Advisor to find the career pathway that most closely matches your interests and skills.
4. Follow 4-Year Plan with required courses and career specific electives to complete Career Pathway.
5. Consider exploring activities and courses, such as Career & Technical Education (CTE), Advanced Placement (AP), and Dual Credit (DC) college courses related to the career pathway of Choice.

Important Assessments for College and Career Planning

PreACT™ is a multiple-choice assessment that helps students prepare for the experience of taking the ACT® test and provides information regarding their future performance on the exam.

ASVAB is a multiple-aptitude battery that measures developed abilities and helps predict future academic and occupational success in the military and civilian careers.

ACT® college readiness assessment is a standardized test for high school achievement and college admissions in the United States.

SAT measures critical reading skills, math problem-solving skills and writing skills.

WorkKeys® Assessments measure foundational skills required for success in the workplace. The three WorkKeys exams are Workplace Documents, Graphic Literacy, and Applied Mathematics.

Pathway	OCCUPATIONS RELATING TO THIS CAREER CLUSTER
Agribusiness Systems	Sales Manager • Ag Lender • Ag Economist • Ag Products Buyer/Distributor • Feed-Supply Store Manager • Farm Investment Manager • Ag Commodity Broker
Animal Systems	Wildlife Biologist • Animal Nutritionist • Livestock Buyer • Livestock Geneticist • Veterinarian • USDA Inspector • Aquaculturist • Equine Manager
Environmental Service Systems	Pollution Prevention Technician • Hazardous Materials Handler • Water Quality Manager • Health and Safety Sanitarian • Toxicologist
Food Products & Processing Systems	Food Scientist • Quality Control Specialist • Biochemist-Nutritionist • Dietician • Microbiologist • Bacteriologist • Food and Fiber Engineer • Produce Buyer
Natural Resources Systems	Park Manager • Range Technician • Ecologist • Fish & Game Officer • Forest Technician • Geology Technician • Mining Engineers • Hydrologist
Plant Systems	Soil/Water Specialist • Botanist • Tree Surgeon • Plant Pathologist • Commodity Marketing Specialist • Golf Course Superintendent • Custom Hay/Silage Operator
Power, Structural & Technical Systems	Remote Sensing Specialist • Equipment/Parts Manager • Welder • GPS Technician • Machinist • Heavy Equipment Maintenance Technician



Agriculture, Food & Natural Resources Career Cluster	
Environmental Services Systems or Plant Systems	
Course Name	Cr
Intro to Agriculture	.5
Plant Science I	.5
Plant Science II	.5
World & International Agriculture	.5
Cooperative Work Experience Education	.5
Students must earn at least 2 credits in a CTE pathway and 2 additional CTE credits to qualify for the CTE Scholarship	

Is this Pathway for you?

- Do you get satisfaction from helping people, animals and/or the environment?
- Are you interested in how things grow and make the best use of the earth's natural resources?
- Are you curious about how machines and systems work?
- Are you someone who likes to work with data to solve problems?
- Are you interested in science and enjoy spending time with nature?
- Do you like to be outdoors in all kind of weather?
- Are you comfortable with situations that are unpredictable and rapidly changing?
- Do you like to plan, work with budgets, and keep records?

Other Electives to Consider for Agriculture Pathway Preparation
<p>CTE Electives</p> <p>Computer Applications, Web Design Business and Personal Finance, Accounting I Marketing, Management/Entrepreneurship Discovering Foods, Culinary Academy Civil Engineering & Architecture Intro to Engineering Design, Principles of Engineering Automated Manufacturing Woods I, II Welding I, II</p> <p>Academic Electives</p> <p>World Languages AP Biology, Anatomy/Physiology Environmental Science Genetics, Earth Science, Field Biology</p>



North Dakota Agriculture, Food & Natural Resources Related Postsecondary Programs

Pathway	Certificate or Associate's Degree	Bachelor's Degree	Master's Degree or More
Agribusiness Systems	<input type="checkbox"/> Agriculture (BSC, DCB, NDSCS) <input type="checkbox"/> Agricultural Sales and Service (DSU) <input type="checkbox"/> Agriculture transfer (BSC, DCB, NDSCS, WSC) <input type="checkbox"/> Farm/Ranch Management (BSC, DSU, NDSCS) <input type="checkbox"/> Precision Agriculture (LRSC)	<input type="checkbox"/> Agribusiness (NDSU, VCSU) <input type="checkbox"/> Agricultural and Biosystems Engineering (NDSU) <input type="checkbox"/> Agricultural Communication (NDSU) <input type="checkbox"/> Agricultural Economics (NDSU) <input type="checkbox"/> Agricultural Education (NDSU) <input type="checkbox"/> Agricultural Studies (DSU) <input type="checkbox"/> Agricultural Systems Management (NDSU) <input type="checkbox"/> General Agriculture (NDSU)	<input type="checkbox"/> Agribusiness and Applied Economics (NDSU) <input type="checkbox"/> Agricultural and Biosystems Engineering (NDSU) <input type="checkbox"/> Agricultural Education (NDSU) <input type="checkbox"/> International Agribusiness (NDSU)
Animal Systems	<input type="checkbox"/> Animal Science (NDSCS) <input type="checkbox"/> Pre-Veterinary Medicine transfer (BSC, DCB, TMCC) <input type="checkbox"/> Wildlife Management (DCB, NDSCS, TMCC)	<input type="checkbox"/> Animal Science (NDSU) <input type="checkbox"/> Equine Science (NDSU) <input type="checkbox"/> Fisheries and Wildlife Science (UND, VCSU) <input type="checkbox"/> Vet Technology (NDSU)	<input type="checkbox"/> Animal Science (NDSU)
Environmental Service Systems	<input type="checkbox"/> Energy Technician (SBC) <input type="checkbox"/> Environmental Science/Technology (CCCC, DCB, NHSC, SBC, TMCC, UTTC) <input type="checkbox"/> Water & Wastewater Treatment (BSC)	<input type="checkbox"/> Energy Management (BSC) <input type="checkbox"/> Environmental Design (NDSU) <input type="checkbox"/> Environmental Science (DSU, NHSC, SBC)	<input type="checkbox"/> Environmental and Conservation Science (NDSU) <input type="checkbox"/> Environmental Science (SBC) <input type="checkbox"/> Environmental Engineering (NDSU, UND)
Food Products & Processing Systems		<input type="checkbox"/> Food Safety (NDSU) <input type="checkbox"/> Food Science (NDSU)	<input type="checkbox"/> Cereal Science (NDSU) <input type="checkbox"/> Food Safety (NDSU)
Natural Resources Systems	<input type="checkbox"/> Land Management (DCB) <input type="checkbox"/> Natural Resources Management (CCCC)	<input type="checkbox"/> Natural Resources Management (NDSU)	<input type="checkbox"/> Natural Resources Management (NDSU) <input type="checkbox"/> Sustainable Energy Engineering (UND)
Plant Systems	<input type="checkbox"/> Agriculture Industry and Technology-Agronomy (BSC) <input type="checkbox"/> Crop Production Sales & Technology (NDSCS) <input type="checkbox"/> Forestry (DCB) <input type="checkbox"/> Horticulture (DCB) <input type="checkbox"/> Sustainable Vegetable Production (DCB)	<input type="checkbox"/> Botany (NDSU) <input type="checkbox"/> Crop and Weed Sciences (NDSU) <input type="checkbox"/> Horticulture (NDSU) <input type="checkbox"/> Range Science (NDSU) <input type="checkbox"/> Soil Science (NDSU) <input type="checkbox"/> Sports and Urban Turfgrass Management (NDSU)	<input type="checkbox"/> Botany (NDSU) <input type="checkbox"/> Horticulture (NDSU) <input type="checkbox"/> Plant Pathology (NDSU) <input type="checkbox"/> Plant Sciences (NDSU) <input type="checkbox"/> Range Science (NDSU) <input type="checkbox"/> Soil Science (NDSU)
Power, Structure, & Technical Systems	<input type="checkbox"/> Caterpillar Dealer Service Technician (NDSCS) <input type="checkbox"/> Diesel Technology: Case IH, Gen. Diesel, Komatsu (NDSCS) <input type="checkbox"/> John Deere Tech (NDSCS) <input type="checkbox"/> Nuclear Power Technology (BSC) <input type="checkbox"/> Oil Drilling/Operations (NHSC, SBC, TMCC) <input type="checkbox"/> Petroleum Engineering Technology (BSC) <input type="checkbox"/> Petroleum Production Technology (BSC, WSC) <input type="checkbox"/> Power Plant Technology (BSC) <input type="checkbox"/> Process Plant Technology (BSC, TMCC) <input type="checkbox"/> Renewable Generation Technology (BSC) <input type="checkbox"/> Wind Energy Technician (LRSC)	<input type="checkbox"/> Energy Management (BSC)	



The National FFA Organization is a local, state, and national co-curricular student association serving high school, college and middle school students enrolled in Agriculture Education courses. The National FFA is dedicated to making a positive difference in the lives of students by developing their potential for premier leadership, personal growth and career success through agricultural education. Fargo students enrolled in agriculture courses in collaboration with Northern Cass or Central Cass Agriculture Education will have the opportunity to participate in the National FFA Chapter. Contact your FFA Advisor to join.



Architecture & Construction Career Cluster



Pathway	OCCUPATIONS RELATING TO THIS CAREER CLUSTER
Construction	Carpenter • Drywall Installer • Painter • Equipment and Materials Manager • Electrician • Plumber • Specialty Contractor • Project Inspector • Construction Engineer
Design/Pre-Construction	Building Code Official • Interior Designer • Architect • Surveying and Mapping Technician • Specification Writer • Drafter • Regional and Urban Planner
Maintenance/Operations	Code Official • Construction Engineer • Estimator • System Installer • Subcontractor • Hazardous Material Remover • Security and Fire Alarm System Manager



Is this Pathway for you?

- Are you curious to read and follow instructions, and/or blueprints?
- Can you picture in your mind what a finished product could look like?
- Do you like to work with your hands?
- Are you attentive when completing work that requires patience and precise results?
- Are you interested in learning how to apply math to real projects?
- Do you work best with logical, step-by-step procedures to solve technical problems?
- Do you like to create or design projects that interest others?
- Does it interest you to use tools, technology, and/or operate machines?
- Can you see yourself working as a member of a team?

Trade & Industry – Coordinated Plan of Study	
Construction	
Course Name	Cr
Building Trades I (Construction I)	2
Building Trades II (Construction II)	2
Cooperative Work Experience	½ to 4
Students must earn at least 2 credits in a CTE pathway and 2 additional CTE credits to qualify for the CTE Scholarship	

Other Electives to Consider for Trade & Industry Pathway Preparation
<p>CTE Electives</p> <p>Woods I, II</p> <p>Construction Technology</p> <p>Intro to Engineering, Civil Engineering & Architecture</p> <p>Computer Applications, Business and Personal Finance</p> <p>Drafting & Design I, II</p> <p>Fundamentals of Business</p> <p>Marketing</p> <p>Interior Decorating & Design</p> <p>Living on Your Own</p> <p>Academic Electives</p> <p>Arts</p> <p>Consumer Math; Geometry</p> <p>Environmental Science, Earth Science</p> <p>Public Speaking</p>





North Dakota Architecture & Construction Related Postsecondary Programs

Pathway	Certificate or Associate's Degree	Bachelor's Degree	Master's Degree or More
Construction	<input type="checkbox"/> Building Construction Technology (NDSCS, TMCC) <input type="checkbox"/> Building Trades (SBC) <input type="checkbox"/> Carpentry (BSC, BJCC, CCCC) <input type="checkbox"/> Concrete (SBC, TMCC) <input type="checkbox"/> Construction Management/Technology (CCCC, NDSCS, NHSC) <input type="checkbox"/> Electrical Technology (NDSCS, SBC, TMCC) <input type="checkbox"/> Framing (SBC) <input type="checkbox"/> Heating Ventilation & Air Conditioning (BSC, CCCC, NDSCS, TMCC) <input type="checkbox"/> Interior Construction (SBC) <input type="checkbox"/> Land Surveying and Civil Engineering Technology (NDSCS) <input type="checkbox"/> Plumbing (NDSCS) <input type="checkbox"/> Sustainable Construction Technology (BSC)	<input type="checkbox"/> Construction Engineering (NDSU) <input type="checkbox"/> Construction Management (NDSU)	<input type="checkbox"/> Construction Management (NDSU)
Design/Pre-Construction	<input type="checkbox"/> Architectural Drafting and Estimating Technology (NDSCS) <input type="checkbox"/> Land Surveying and Civil Engineering Technology (NDSCS)	<input type="checkbox"/> Architecture (NDSU) <input type="checkbox"/> Civil Engineering (NDSU) <input type="checkbox"/> Construction Engineering (NDSU) <input type="checkbox"/> Landscape Architecture (NDSU)	<input type="checkbox"/> Architecture (NDSU) <input type="checkbox"/> Civil Engineering (NDSU)
Maintenance/Operations	<input type="checkbox"/> Facilities Maintenance (BJCC) <input type="checkbox"/> Mechanical Systems (NDSCS) <input type="checkbox"/> Mechanical Maintenance Technology (BSC)		



SkillsUSA is a local, state, and national co-curricular association serving high school, college and middle school students who are preparing for careers in trade, technical and skilled service occupations, including health occupations. SkillsUSA empowers its members to become world-class workers, leaders and responsible American citizens the SkillsUSA Framework of personal, workplace and technical skills. Ask about your SkillsUSA Advisor and learn what it takes to become a member.

Pathway	OCCUPATIONS RELATING TO THIS CAREER CLUSTER
Audio and Video Technology and Film	Audio Systems Technician • Audio-Video Designer and Engineer • Technical Computer Support • Videographer • Special Effects and Animation Designer Technician
Journalism and Broadcasting	Control Room Technician • Design Director • Broadcast Technician • Editor • Producer • Station Manager • Audio-Video Operator
Performing Arts	Actor/Actress • Lighting Designer • Scenic Designer • Musician • Composer • Makeup Artist • Playwright • Digital, Video and State Production Manager
Printing Technology	Desktop Publishing Specialist • Computer Typography • Pre-production Technician • Plate Maker • Graphics Equipment Operator • Web Page Designer • Lithographer
Telecommunications	Network Designer • Telecommunications Technician • Telecommunication Equipment: Cable, Line Repair and Installation • Computer Programmer and Systems Analyst
Visual Arts	Fashion Designer • Commercial Artist • Commercial Photographer: Digital, Still, Video, Film • Illustrator • Textile Designer • Interior Designer • Computer Animator



Arts, AV Technology & Communication Coordinated Plan of Study	
Visual Arts (Graphics)	
Course Name	Cr
Photography I	.5
Photography II	.5
Graphic Communications I	.5
Graphic Communications II	.5
Cooperative Work Experience	1
Students must earn at least 2 credits in a CTE pathway and 2 additional CTE credits to qualify for the CTE Scholarship	

Is this Pathway for you?

- Do ideas inspire you to create?
- Are you passionate to overcome obstacles?
- Do you find multiple ways to express your creativity?
- Do you like to communicate your ideas?
- Do you enjoy drawing, performing or writing stories?
- Do you seek opportunities to learn about and be engaged in history or culture?
- Does the idea of working in or being a part of a community that creates excite you?
- Do you enjoy exploring new technologies?
- Are you able to communicate your ideas to diverse audiences?

Other Electives to Consider for Arts, AV Technology, & Communication Pathway Preparation
<p>CTE Electives</p> <ul style="list-style-type: none"> Fundamentals of Business Marketing Management and Entrepreneurship Interior Decorating & Design Living on Your Own
<p>Academic Electives</p> <ul style="list-style-type: none"> Drama, Theatre Arts, Advanced Theatre Arts Art I, II, Art Appreciation, Art Trends Ceramics I, II, III Drawing, Painting, and Design Consumer Math; Geometry Environmental Science, Earth Science Public Speaking



North Dakota Arts, A/V Technology & Communications Related Postsecondary Programs

Pathway	Certificate or Associate's Degree	Bachelor's Degree	Master's Degree or More
Audio and Video Technology and Film	<input type="checkbox"/> Digital Audio Production (BSC) <input type="checkbox"/> Web Page Development and Design (BSC, NDSCS)	<input type="checkbox"/> Multimedia Studies (MiSU) <input type="checkbox"/> New Media & Web Design (NDSU)	<input type="checkbox"/> Library/Information Technology (VCSU)
Journalism and Broadcasting	<input type="checkbox"/> English transfer (BSC, DCB, TMCC) <input type="checkbox"/> Mass Communications (BSC) <input type="checkbox"/> Speech Communication transfer (BSC)	<input type="checkbox"/> Broadcasting (MiSU) <input type="checkbox"/> Communication (DSU, MaSU, MiSU, UJ, UND, VCSU) <input type="checkbox"/> English (DSU, MaSU, MiSU, NDSU, UJ, UM, UND, VCSU) <input type="checkbox"/> English Education (DSU, MaSU, MiSU, NDSU, UM, VCSU) <input type="checkbox"/> Journalism/Professional Writing (NDSU) <input type="checkbox"/> Mass Communications (UM)	<input type="checkbox"/> Communication (NDSU) <input type="checkbox"/> English (NDSU) <input type="checkbox"/> Mass Communications (NDSU) <input type="checkbox"/> Speech Communication (NDSU)
Performing Arts	<input type="checkbox"/> Music transfer (BSC, NDSCS, TMCC, WSC) <input type="checkbox"/> Theatre Arts - Performance (BSC) <input type="checkbox"/> Theatre Arts – Technical Theatre (BSC)	<input type="checkbox"/> Music (DSU, MiSU, NDSU, UJ, UM, UND, VCSU) <input type="checkbox"/> Music Education (DSU, MiSU, UM, UND, VCSU) <input type="checkbox"/> Music Performance (UM, UND) <input type="checkbox"/> Musical Theatre (UND) <input type="checkbox"/> Theatre Arts (DSU, MiSU, NDSU, UND) <input type="checkbox"/> Theatre Education (MiSU)	<input type="checkbox"/> Music (NDSU, UND) <input type="checkbox"/> Theatre Arts (NDSU)
Printing Technology		<input type="checkbox"/> Print Communications Concentration (MiSU)	
Telecommunications	<input type="checkbox"/> Electronics Technology (BSC) <input type="checkbox"/> Electronics/Telecommunications Technology (BSC)	<input type="checkbox"/> Communication (DSU, MaSU, MiSU, UJ, UND, VCSU) <input type="checkbox"/> Strategic Communication (NDSU)	
Visual Arts	<input type="checkbox"/> Art transfer (DCB, TMCC) <input type="checkbox"/> Fine Art (CCCC) <input type="checkbox"/> Graphic Arts/Design (CCCC, RC, UTTC) <input type="checkbox"/> Graphic Design & Communications (BSC) <input type="checkbox"/> Photography (DCB) <input type="checkbox"/> Visual Art transfer (BSC)	<input type="checkbox"/> Apparel, Retail Merchandising, and Design (NDSU) <input type="checkbox"/> Art/Art Studies (DSU, MiSU, NDSU, UJ, VCSU) <input type="checkbox"/> Arts Administration (MiSU) <input type="checkbox"/> Art Education (DSU, MiSU, NDSU, VCSU) <input type="checkbox"/> Art Entrepreneurship (DSU) <input type="checkbox"/> Fine Arts (MiSU) <input type="checkbox"/> Graphic Design (RC) <input type="checkbox"/> Graphic Design & New Art Media (UND) <input type="checkbox"/> Graphic Design Technology (UND) <input type="checkbox"/> Interior Design (NDSU) <input type="checkbox"/> Visual Arts (UND)	<input type="checkbox"/> Visual Arts (UND)



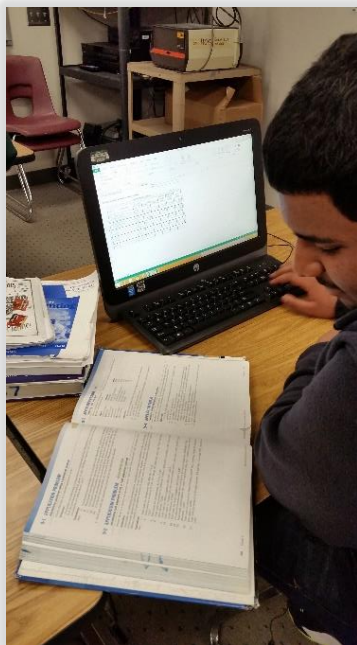
The Technology Student Association is a local, state, and national student organization created to develop skills in science, technology, engineering, and mathematics as well as business education. TSA aims to develop leadership, academic, and business management skills in the workplace among students and leaders within the community. Students currently or previously enrolled in Technology & Engineering courses join TSA and extend their learning and leadership through intra-curricular activities, and competitions. Contact your school's TSA Advisor to get involved.



Business Management & Administration Career Cluster



Pathway	OCCUPATIONS RELATING TO THIS CAREER CLUSTER
Administrative Support	Administrative Assistant • Office Manager • Customer Service Assistant • Desktop Publisher • Data Entry Specialist • Receptionist • Medical Transcriptionist • Legal Secretary
Business Information Management	Information Systems Manager • Accounting Clerk or Supervisor • Adjuster • Chief Technology Officer • Budget Analyst • Auditor • Business Consultant
General Management	General Manager • Business & Development Manager • Risk Manager • Public Relations Manager • Chief Executive Officer • Entrepreneur
Human Resources Management	Human Resource Manager • Industrial Relations Director • Compensation & Benefits Manager • Corporate Trainer • Personnel Recruiter • Public Relations Manager
Operations Management	Training & Development Manager • Sales Representative or Manager • Budget Analyst • Research & Development Manager • E-Commerce Analyst



Business Education – Coordinated Plan of Study					
Business Management & Administration Career Cluster				Finance Career Cluster	
Administrative Support		General Management		Accounting	
Course Name	Cr	Course Name	Cr	Course Name	Cr
BCA Exploring Bus. Computer Apps	.5	BCA Exploring Bus. Computer Apps	.5	BCA Exploring Bus. Computer Apps	.5
Fundamentals of Business	.5	Business/Personal Finance (14095)	.5	Business/Personal Finance	.5
Accounting I	1	Accounting I	1	Accounting I	1
Accounting II	1	Accounting II	1	Accounting II	1
Web Design	.5	Fund of Business	.5	Fund of Business	.5
Adv. Web Design (14022)	.5	Business Law (14090)	.5	Business Law	.5

Students must earn at least 2 credits in a CTE pathway and 2 additional CTE credits to qualify for the CTE Scholarship

Is this Pathway for you?

- Are you someone who likes to work with data to solve problems?
- Do you like to interact with all kinds of people?
- Do you like to come up with new ideas?
- Do you like to follow directions to complete a task?
- Do you consider yourself a leader who could be part of a team?
- Are you interested in technology and its ongoing innovation?
- Have you ever dreamed of owning your own business?
- Do you enjoy using math to solve problems?
- Are you able to communicate your ideas to diverse audiences?

Other Electives to Consider for Business Education Pathway Preparation

CTE Electives

IT Essentials I, II, Intro to Coding & Gaming
 Family Living, Food Trends, Culinary Arts
 Entertainment and Sports Marketing, Marketing, Store Manager, Management/Entrepreneurship
 Photography I, II, Graphic Communication I & II

Academic Electives

Consumer Math
 Communications; Creative Writing, Yearbook
 World Languages
 Microeconomics, Publications/Media
 Psychology I, II
 Public Speaking, Debate
 Sociology
 AP Math



North Dakota Business Management & Administration Related Postsecondary Programs			
Pathway	Certificate or Associate's Degree	Bachelor's Degree	Master's Degree or More
Administrative Support	<input type="checkbox"/> Administrative Assistant (BSC, DCB, LRSC, NHSC) <input type="checkbox"/> Bookkeeping (DCB) <input type="checkbox"/> Business/Office Technology (CCCC, NDSCS, SBC, UTTC) <input type="checkbox"/> Computer Applications (CCCC) <input type="checkbox"/> Computer Support Specialist (BSC, TMCC) <input type="checkbox"/> Office Administration (BJCC, DSU) <input type="checkbox"/> Reception Services (DCB)		
Business Information Management	<input type="checkbox"/> Business Management (MaSU, NDSCS, RC, UTTC, WSC) <input type="checkbox"/> Computer Information Systems (BSC, DCB, NDSCS) <input type="checkbox"/> Information Processing Specialist (BSC) <input type="checkbox"/> Information Tech/Management (DCB, LRSC, NDSCS, NHSC, RC, SBC, WSC) <input type="checkbox"/> Management Information Systems (NDSCS) <input type="checkbox"/> Small Business Management (DCB)	<input type="checkbox"/> Applied Business Information Technology (MiSU) <input type="checkbox"/> Business Communication (UM) <input type="checkbox"/> Business Process Integration Management (VCSU) <input type="checkbox"/> Computer Information Systems (MaSU, UM, UND) <input type="checkbox"/> Information Technology Management (RC, UM) <input type="checkbox"/> Management Communication (NDSU) <input type="checkbox"/> Management Information Systems (MiSU, NDSU)	<input type="checkbox"/> Information Systems (MiSU)
General Management	<input type="checkbox"/> Business Administration transfer (BSC, CCCC, DCB, LRSC, NDSCS, NHSC, SBC, TBC, TMCC) <input type="checkbox"/> Business Education transfer (BSC, DCB) <input type="checkbox"/> Computer Support Specialist (BSC, TMCC) <input type="checkbox"/> Entrepreneurship (BSC, CCCC, NDSCS, SBC, TMCC) <input type="checkbox"/> Management (BSC)	<input type="checkbox"/> Applied Management (MiSU) <input type="checkbox"/> Business Administration (DSU, MaSU, NDSU, SBC, TBC, UTTC, UJ, UM, VCSU) <input type="checkbox"/> Business Education (DSU, MiSU, UM, VCSU) <input type="checkbox"/> Entrepreneurship (UND) <input type="checkbox"/> International Business (MiSU) <input type="checkbox"/> Management (MiSU, NDSU, RC, UND, VCSU) <input type="checkbox"/> Public Administration (UND)	<input type="checkbox"/> Business (UM) <input type="checkbox"/> Business Administration (NDSU, UM, UND) <input type="checkbox"/> Management (MiSU) <input type="checkbox"/> Project Management (UM) <input type="checkbox"/> Public Administration (UM, UND)
Human Resources Management	<input type="checkbox"/> HR and Organizational Leadership (RC)	<input type="checkbox"/> Human Resource Management (DSU, UND, VCSU) <input type="checkbox"/> Human Resources and Organizational Leadership (RC)	
Operations Management		<input type="checkbox"/> Business Economics (UND) <input type="checkbox"/> Business Management (RC, UM) <input type="checkbox"/> Business Systems Analysis (RC) <input type="checkbox"/> Management Communication (NDSU) <input type="checkbox"/> Operations & Supply Chain Management (UND)	



Future Business Leaders of America is a co-curricular student organization for students enrolled in Business Education courses. FBLA inspires and prepares students to become community-minded business leaders in a global society through relevant career preparation and leadership experiences. FBLA focuses on leadership development, academic competitions, high school programs, membership benefits, community services, and awards. Contact your high school FBLA Advisor to learn what it takes to become a member.

Pathway	OCCUPATIONS RELATING TO THIS CAREER CLUSTER
Biotechnology Research & Development	Research Scientist/Assistant • Microbiologist • Biostatistician • Cell Biologist • Biomedical Chemist • Geneticist • Genetics Lab Assistant • Quality Assurance Technician
Diagnostic Services	Clinical Lab Technician • Phlebotomist • Geneticist • Nutritionist • Magnetic Resonance (MR) Technologist • Radiologist • Pathologist • Exercise Physiologist
Health Informatics	Health Information Coder • Admitting Clerk • Transcriptionist • Medical Librarian • Public Health Educator • Ethicist • Medical Assistant • Epidemiologist
Support Services	Dietary Aide • Hospital Maintenance Engineer • Environmental Services Manager • Industrial Hygienist • Biomedical Engineer • Transport Technician
Therapeutic Services	Dental Assistant/Hygienist • Occupational Therapist • EMT/Paramedic • Physician • Nurse • Veterinarian • Social Worker • Massage Therapist • Physical Therapist • Pharmacist

Health Science Coordinated Plan of Study			
Therapeutic Services		Biotechnology Research	
Course Name	Cr	Course Name	Cr
Certified Nurse Assistant <i>(Dual Credit)</i>	.5	**PLTW Principles of Biomedical Science	1
Emergency Medical Services <i>(Dual Credit)</i>	.5	*PLTW Human Body Systems	1
Health Science I	1	*PLTW Medical Interventions (23-24)	1
Health Science II	.5	* <i>Horace High School</i> ** <i>Horace and Sheyenne High School</i>	
Medical Terminology Online <i>(Dual Credit)</i>	.5		
Prevention and Care of Athletic Injuries <i>(Dual Credit)</i>			
Supervised Occupational Experience			½ to 4



Is this Pathway for you?

- Do you get satisfaction from helping people, animals, and/or the environment?
- Do you enjoy dealing with a problem that isn't easily solved or doesn't have the correct answer?
- Are you comfortable with situations that are unpredictable and rapidly changing?
- Are you interested in math and science?
- Do you like listening and working with others who have differing viewpoints?
- Do you enjoy puzzles, exploring and solving problems?
- Can you respond quickly and calmly in unexpected situations?
- Do you like to volunteer and do service work that focuses on helping other people or the environment?

Other Electives to Consider for Health Science Pathway Preparation

- CTE Electives**
- Computer Applications I
 - Child Development
 - Food Trends
 - Intro to Engineering Design, Principles of Engineering
 - Marketing
 - Management/Entrepreneurship
- Academic Electives**
- Communications
 - World Languages
 - JET
 - Advanced Math, Pre-Calculus, AP Calculus
 - Anatomy/Physiology
 - AP Biology, AP Chemistry, AP Physics I
 - Psychology I, II
 - Public Speaking
 - Sociology
 - STEM



North Dakota Health Science Related Postsecondary Programs			
Pathway	Certificate or Associate's Degree	Bachelor's Degree	Master's Degree or More
Biotechnology Research & Development	<input type="checkbox"/> Biotechnology transfer (NDSCS) <input type="checkbox"/> Pharmacy Technician (NDSCS, RC, TMCC)	<input type="checkbox"/> Bioinformatics (MiSU) <input type="checkbox"/> Biotechnology (NDSU) <input type="checkbox"/> Pharmaceutical Sciences (NDSU)	<input type="checkbox"/> Biomedical Sciences (UND) <input type="checkbox"/> Genomics and Bioinformatics (NDSU) <input type="checkbox"/> Pharmaceutical Sciences/Pharmacy (NDSU)
Diagnostic Services	<input type="checkbox"/> Clinical Laboratory Science transfer (NDSCS) <input type="checkbox"/> Dialysis Technician (NDSCS) <input type="checkbox"/> EMT – Paramedic Technician (BSC, DCB, NDSCS) <input type="checkbox"/> Medical Laboratory Technician (BSC, TMCC) <input type="checkbox"/> Medical Laboratory transfer (BSC) <input type="checkbox"/> Phlebotomy Technician (BSC, TMCC)	<input type="checkbox"/> Medical Lab Science (MaSU, MiSU, NDSU, UJ, UM, UND, VCSU) <input type="checkbox"/> Communication Sciences and Disorders (UM, UND) <input type="checkbox"/> Radiologic Technology (MiSU, NDSU, UJ, UM)	<input type="checkbox"/> Medical Lab Science (UND)
Health Informatics	<input type="checkbox"/> Community Health Worker (SBC) <input type="checkbox"/> Health Information Technician/Management (DCB, NDSCS) <input type="checkbox"/> Medical Administrative Asst. (BJCC, DCB, RC) <input type="checkbox"/> Medical Coding/Billing (DCB, NDSCS, RC, UTTC, WSC)	<input type="checkbox"/> Community Nutrition (UND) <input type="checkbox"/> Forensic Science (UND) <input type="checkbox"/> Healthcare Management (RC) <input type="checkbox"/> Health Administration (UM) <input type="checkbox"/> Health Communication (NDSU)	<input type="checkbox"/> Health Care Administration (UM) <input type="checkbox"/> Nurse Administrator (UM) <input type="checkbox"/> Public Health (NDSU, UND)
Support Services	<input type="checkbox"/> Caregiver Services (DCB) <input type="checkbox"/> Environmental Public Health (TMCC) <input type="checkbox"/> Fitness Trainer Technician (LRSC) <input type="checkbox"/> Social Work transfer (BSC, CCCC, NDSCS, TMCC, WSC)	<input type="checkbox"/> Corporate Fitness/Wellness (MaSU, MiSU) <input type="checkbox"/> Exercise Science (DSU, NDSU, UJ, UM) <input type="checkbox"/> Kinesiology (UND) <input type="checkbox"/> Social Work (MiSU, UM, UND)	<input type="checkbox"/> Clinical Exercise Physiology (UM) <input type="checkbox"/> Exercise Science and Nutrition (NDSU) <input type="checkbox"/> Exercise Physiology/Kinesiology (UM, UND) <input type="checkbox"/> Social Work (UND)
Therapeutic Services	<input type="checkbox"/> Addictions Studies Transfer (NHSC) <input type="checkbox"/> Dental Assisting/Hygiene (NDSCS) <input type="checkbox"/> Health/Medical Assistant (CCCC, DCB) <input type="checkbox"/> Massage Therapy (JSHDF, JSHDGF, TSPA, WSC) <input type="checkbox"/> Mental Health/Addictions Technician (WSC) <input type="checkbox"/> Nursing transfer (BSC, CCCC, DCB, LRSC, NDSCS, SBC, WSC) <input type="checkbox"/> Occupational Therapy Assistant (NDSCS) <input type="checkbox"/> Practical Nursing (BSC, BJCC, DCB, DSU, NDSCS, NHSC, SBC, TMCC, UTTC, WSC) <input type="checkbox"/> Pre-Professional transfer (BSC, DCB, MaSU, NDSCS, TMCC, WSC) <input type="checkbox"/> Surgical Technology (BSC)	<input type="checkbox"/> Addiction Studies (MiSU) <input type="checkbox"/> Athletic Training (MiSU, UM, UND) <input type="checkbox"/> Dietetics (NDSU, UND) <input type="checkbox"/> Music Therapy (UND) <input type="checkbox"/> Nursing (DSU, MaSU, MiSU, NDSU, RC, UJ, UM, UND) <input type="checkbox"/> Pre-Professional Programs (MaSU, MiSU, UM) <input type="checkbox"/> Rehabilitation and Human Services (UND) <input type="checkbox"/> Respiratory Care/Therapy (NDSU, UM)	<input type="checkbox"/> Advanced Nursing Practice (NDSU) <input type="checkbox"/> Advanced Athletic Training (NDSU) <input type="checkbox"/> Dietetics (NDSU) <input type="checkbox"/> Health, Nutrition and Exercise Science (NDSU) <input type="checkbox"/> Gerontology (NDSU) <input type="checkbox"/> Nursing (NDSU, UM, UND) <input type="checkbox"/> Nutrition (UND) <input type="checkbox"/> Occupational Therapy (UM, UND) <input type="checkbox"/> Physical Therapy (UJ, UM, UND) <input type="checkbox"/> Physician Assistant (UND) <input type="checkbox"/> Psychological Clinical Science (NDSU) <input type="checkbox"/> Respiratory Therapy (UM)



HOSA is an international student organization recognized by the Health Science Education (HSE) Division of ACTE. HOSA's goal is to encourage all health science instructors and students to join and be actively involved in leadership and demonstrate these skills through local, state and national competitions. HOSA provides a unique program of leadership development, motivation, and recognition exclusively for secondary, postsecondary, adult, and collegiate students enrolled in health science education and biomedical science programs or have interests in pursuing careers in health professions. Contact your HOSA Advisor to learn more to become a member.



Human Services Career Cluster

Family & Consumer Science



Pathway	OCCUPATIONS RELATING TO THIS CAREER CLUSTER
Consumer Services	Customer Service Representative • Financial Advisor • Market Researcher • Consumer Credit Counselor • Certified Financial Planner • Sales Consultant
Counseling & Mental Health Services	Career Counselor • Mental Health Counselor • Psychologist • Vocational Rehabilitation Counselor • School Counselor • Sociologist
Early Childhood Development & Services	Child Care Worker • Nanny • Preschool Teacher/Teacher Assistant • Child Care Center Director • Parent Educator
Family & Consumer Services	Human Services Worker • Religious Leader • Volunteer Coordinator • Social Worker • Day Care Worker • Emergency Relief Worker • Social Services Worker
Personal Care Services	Cosmetologist • Personal Trainer • Personal and Home Care Aide • Funeral Director • Massage Therapist • Exercise Physiologist • Nail Technician

Family and Consumer Science – Coordinated Plan of Study

Human Services Career Cluster				Hospitality & Tourism Career Cluster		Arts, AV Technology & Communications Career Cluster		Education & Training Career Cluster	
Family and Community Services		Early Childhood Development		Restaurant/Food Service		Visual Arts		Teaching/Training	
Course Name	Cr	Course Name	Cr	Course Name	Cr	Course Name	Cr	Course Name	Cr
Discovering Foods	.5	Child Development	.5	Discovering Foods	.5	Fashion and Clothing	.5	Child Development	.5
Child Development	.5	Early Childhood Education Block	1	International Cuisine	.5	Contemporary Sewing	.5	Intro to Teaching <i>(dual credit)</i>	.5
Food Trends	.5	Living on Your Own	.5	Food Trends	.5	Interior Decorating/Design	.5	Teaching Field Experience <i>(dual credit)</i>	.5
Living on Your Own	.5			Culinary Arts I	1	Living on Your Own	.5	Educating the Exceptional Student <i>(dual credit)</i>	.5
				Living on Your Own	.5			Cooperative Experience	.5-1

Students must earn at least 2 credits in a CTE pathway and 2 additional CTE credits to qualify for the CTE Scholarship

Is this Pathway for you?

- Are you open-minded when helping others solve problems?
- Are you self-motivated?
- Do you enjoy working as a team?
- Are you compassionate and empathetic?
- Do you have a desire for a career in public service?
- Do you have an interest in human development and behavior?
- Do you consider yourself a leader who could be a part of a team?

Other Electives to Consider for Family & Consumer Science Pathway Preparation

CTE Electives

Accounting I, II
 Computer Applications, Web Design
 Business & Personal Finance
 Fundamentals of Business
 Health Science I, CNA
 Marketing

Academic Electives

Arts
 Consumer Math
 Communications, Creative Writing, Public Speaking
 World Language
 Junior Educator of Tomorrow
 Microeconomics
 Publications/Media
 Psychology I
 Sociology



North Dakota Human Services Related Postsecondary Programs

Pathway	Certificate or Associate's Degree	Bachelor's Degree	Master's Degree or More
Consumer Services	<input type="checkbox"/> Business Administration transfer (BSC, CCCC, DCB, NDSCS, NHSC, SBC, TBC, TMCC) <input type="checkbox"/> Management (BSC, DCB, RC, SBC, UTTC, WSC)	<input type="checkbox"/> Business Administration (NDSU, UJ, SBC, TBC, UTTC, VCSU) <input type="checkbox"/> Management (MiSU, NDSU, RC, UTTC, UM, UND, VCSU)	<input type="checkbox"/> Business Administration (NDSU)
Counseling & Mental Health Services	<input type="checkbox"/> Addiction Studies (NHSC) <input type="checkbox"/> Mental Health/Addictions Technician (WSC) <input type="checkbox"/> Psychology transfer (BSC, DCB, NDSCS, TMCC, WSC)	<input type="checkbox"/> Addiction Studies (MiSU) <input type="checkbox"/> Applied Psychology (MaSU) <input type="checkbox"/> Psychology (MiSU, NDSU, UJ, UM, UND, VCSU)	<input type="checkbox"/> Clinical Counseling (UJ) <input type="checkbox"/> Counseling (NDSU, UM, UND) <input type="checkbox"/> Counseling Education and Supervision (NDSU) <input type="checkbox"/> Counseling Psychology & Community Services (UND) <input type="checkbox"/> Couple and Family Therapy (NDSU) <input type="checkbox"/> Psychology (NDSU, UND)
Early Childhood Development & Services	<input type="checkbox"/> Child Development (DCB, NHSC) <input type="checkbox"/> Early Childhood (MaSU) <input type="checkbox"/> Early Childhood Education transfer (BSC, CCCC, DCB, LRSC, NDSCS, NHSC, SBC, RC)	<input type="checkbox"/> Early Childhood (MaSU) <input type="checkbox"/> Early Childhood Education (MaSU, MiSU, RC, SBC, UM, UND) <input type="checkbox"/> Human Development & Family Science (NDSU)	<input type="checkbox"/> Early Childhood Education (UND) <input type="checkbox"/> Developmental Science (NDSU) <input type="checkbox"/> Human Development & Family Science (NDSU)
Family & Community Services	<input type="checkbox"/> Biblical Studies (TBC) <input type="checkbox"/> Caregiver Services (DCB) <input type="checkbox"/> Community Health Worker (SBC) <input type="checkbox"/> Human Services/Eligibility Worker (BSC, NHSC, RC, SBC) <input type="checkbox"/> Religion transfer (BSC, WSC) <input type="checkbox"/> Social Work transfer (BSC, CCCC, DSU, NDSCS, TMCC, WSC)	<input type="checkbox"/> Catholic Studies (UM) <input type="checkbox"/> Human Development & Family Science (NDSU) <input type="checkbox"/> Human Services (RC, VCSU) <input type="checkbox"/> Pastoral/Youth/Children's Ministry (TBC, UM) <input type="checkbox"/> Rehabilitation and Human Services (UND) <input type="checkbox"/> Religious/Theology/Biblical Studies (UJ, UM, UND, TBC) <input type="checkbox"/> Social Work (MiSU, UM, UND)	<input type="checkbox"/> Gerontology (NDSU) <input type="checkbox"/> Human Development & Family Science (NDSU) <input type="checkbox"/> Missional Leadership (TBC) <input type="checkbox"/> Public Health (NDSU, UND) <input type="checkbox"/> Social Work (UND)
Personal Care Services	<input type="checkbox"/> Fitness Trainer Technician (LRSC) <input type="checkbox"/> Barbering and Cosmetology (MBC) <input type="checkbox"/> Cosmetology (HAHD, JSHDF, JSHDGF, JSHDW, JZT, THA, TSPA) <input type="checkbox"/> Esthetician/Skin Care (JSHDGF, JSHDW, THA, TSPA) <input type="checkbox"/> Massage Therapy (JSHDGF, JSHDW, TSPA, WSC) <input type="checkbox"/> Nail Technology (JSHDW, JZT, THA, TSPA)	<input type="checkbox"/> Athletic/Fitness Training (MiSU, UM, UND) <input type="checkbox"/> Exercise Science (DSU, NDSU, UJ, UM) <input type="checkbox"/> Sport Management (NDSU)	<input type="checkbox"/> Advanced Athletic Training (NDSU) <input type="checkbox"/> Clinical Exercise Physiology (UM) <input type="checkbox"/> Exercise Science and Nutrition (NDSU)



FCCLA is a national Career and Technical Student Organization that provides personal growth, leadership development, and career preparation opportunities for students in Family and Consumer Sciences education. Our Mission is to promote personal growth and leadership development through Family and Consumer Sciences education. Focusing on the multiple roles of family member, wage earner and community leader, members develop skills for life through: character development, creative and critical thinking, interpersonal communication, practical knowledge, and career preparation. Ask who your FCCLA advisor is to learn more about becoming a member.

Pathway	OCCUPATIONS RELATING TO THIS CAREER CLUSTER
Information Support & Services	Database Administrator • Account Manager • Help Desk Specialist • Information Systems Architect • Systems Analyst • Instructional Designer • Testing Engineer
Network Systems	User Support Specialist • Network Administrator • Network Engineer • Information Technology Engineer • Network Security Analyst • Telecommunications Network Technician
Programming & Software Development	Computer Engineer • Software Applications Specialist • Game Developer • Software Applications Tester • Project Lead • Software Design Engineer
Web & Digital Communications	Multimedia Specialist • Web Designer • Web Site Developer • Animator • Blog Developer • Streaming Media Specialist



Information Technology - Coordinated Plan of Study			
Information Technology Career Cluster			
Network Systems		Computer Programing	
Course Name	Cr	Course Name	Cr
IT Essentials I/II	1	Intro to Coding and Gaming	.5
*Intro to Networking & Cybersecurity	.5	Programming with Python	.5
		Computer Programming Java I	.5
CISCO I – South HS	.5	Mobile App Development & Security	.5
CISCO II, III, IV - NDSCS	.5	AP Computer Science - Java	.5
*South High School		Help Desk Cooperative Work Experience	.5-4
Students must earn at least 2 credits in a CTE pathway and 2 additional CTE credits to qualify for the CTE Scholarship			

Other Electives to Consider for Information Technology Pathway Preparation
CTE Electives Accounting I, II Aviation I, II Business & Personal Finance, Business Law Computer Applications, Web Design Marketing, Management/Entrepreneurship Intro to Engineering Design, Principles of Engineering
Academic Electives Communications College Algebra, AP Calculus, Statistics Physics Publications/Broadcast STEM

Is this Pathway for you?

- Do you enjoy working with computers?
- Are you curious to learn reasoning and logic to solve complex problems?
- Are you comfortable with situations that are unpredictable and rapidly changing?
- Are you interested in how procedures make machines work?
- Do you like to read technical materials and diagrams and solve technical problems?
- Are you patient when problem-solving to find a solution?
- Do you enjoy working as a team or independently?
- Play video games and figure out how they work.

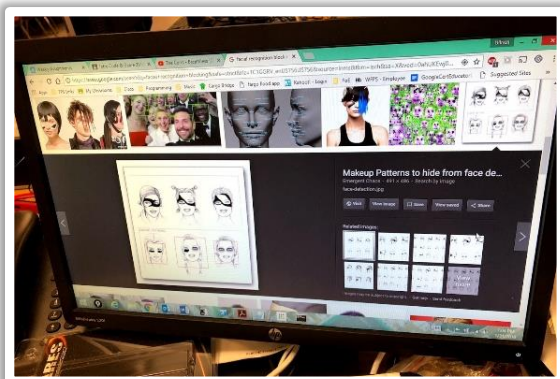
I Can Code

=class= "rg_di"





North Dakota Information Technology Related Postsecondary Programs			
Pathway	Associate's Degree or Less	Bachelor's Degree	Master's Degree or More
Information Support & Services	<input type="checkbox"/> Computer Applications (CCCC) <input type="checkbox"/> Computer Information Systems (BSC, DCB) <input type="checkbox"/> Computer Support Specialist (BSC, TMCC) <input type="checkbox"/> Computer Technology/Information Technology (DCB) <input type="checkbox"/> Geographic Information Systems Technician (BSC) <input type="checkbox"/> Information Systems Administrator (NDSCS) <input type="checkbox"/> Information Processing Specialist (BSC) <input type="checkbox"/> Information Management (NHSC, RC) <input type="checkbox"/> Information Technology (LRSC, NDSCS, RC, SBC, WSC) <input type="checkbox"/> IT Forensics (NDSCS) <input type="checkbox"/> Management Information Systems transfer (NDSCS)	<input type="checkbox"/> Applied Business Information Technology (MiSU) <input type="checkbox"/> Computer Technology Management (DSU) <input type="checkbox"/> Information Security (RC) <input type="checkbox"/> Management Information Science (UJ) <input type="checkbox"/> Information Technology (UJ) <input type="checkbox"/> Information Technology Management (RC, UM) <input type="checkbox"/> Technology Education (DSU, VCSU)	<input type="checkbox"/> Information Systems (MiSU) <input type="checkbox"/> Library/Information Technology (VCSU) <input type="checkbox"/> Technology (UND)
Network Systems	<input type="checkbox"/> Information Management (NHSC, RC) <input type="checkbox"/> Information Technology (LRSC, NDSCS, RC, SBC, WSC)	<input type="checkbox"/> Computer Information Systems (MaSU, UM, VCSU) <input type="checkbox"/> Information Systems (UND) <input type="checkbox"/> Management Information Systems (NDSU)	<input type="checkbox"/> Computer Science (NDSU, UND) <input type="checkbox"/> Electrical and Computer Engineering (NDSU)
Programming & Software Development	<input type="checkbox"/> Computer Science transfer (BSC, NDSCS) <input type="checkbox"/> Mobile Application Developer (NDSCS) <input type="checkbox"/> Software Application Development (RC)	<input type="checkbox"/> Computer Engineering (NDSU) <input type="checkbox"/> Computer Science (DSU, MiSU, NDSU, RC, UJ, UM, UND) <input type="checkbox"/> Electrical and Computer Engineering (NDSU) <input type="checkbox"/> Software Engineering (VCSU)	<input type="checkbox"/> Electrical and Computer Engineering (NDSU) <input type="checkbox"/> Software Engineering (NDSU)
Web & Digital Communications	<input type="checkbox"/> Computer Technology/Webmaster and Web Design (DCB) <input type="checkbox"/> Web Design (NDSCS) <input type="checkbox"/> Web Developer (NDSCS) <input type="checkbox"/> Web Page Development and Design (BSC) <input type="checkbox"/> Web Programming (RC)	<input type="checkbox"/> New Media and Web Design (NDSU)	



**Coding, Cyber Security
Help Desk & e-Sports**

Pathway	OCCUPATIONS RELATING TO THIS CAREER CLUSTER
Health, Safety & Environmental Assurance	Environmental Engineer • Health and Safety Specialist • Safety Team Leader • Environmental Specialist • Safety Coordinator • Environmental Field Technician
Logistics & Inventory Control	Dispatcher • Freight/Stock/Material Mover • Industrial Truck & Tractor Operator • Materials Handler • Logistical Engineer • Quality Control Technician
Maintenance, Installation & Repair	Computer Repair Technician • Boilermaker • Communication Systems Installer • Laser Systems Technician • Industrial Machinery Mechanic • Instrument Calibration Technician
Manufacturing Production Process Development	Industrial Engineer • Manufacturing Technician • Purchasing Agent • Precision Inspector, Tester and Grader • Production Manager • Electronics Engineer
Production	Welder • Calibration Technician • Precision Layout Worker • Assembler • Tool & Die Maker • Sheet Metal Worker • Micro and Nano Fabrication Technicians
Quality Assurance	Process Control Technician • Inspector • Quality Control Technician • Calibration Technician • Lab Technician • Statistical Process Control (SPC) Coordinator

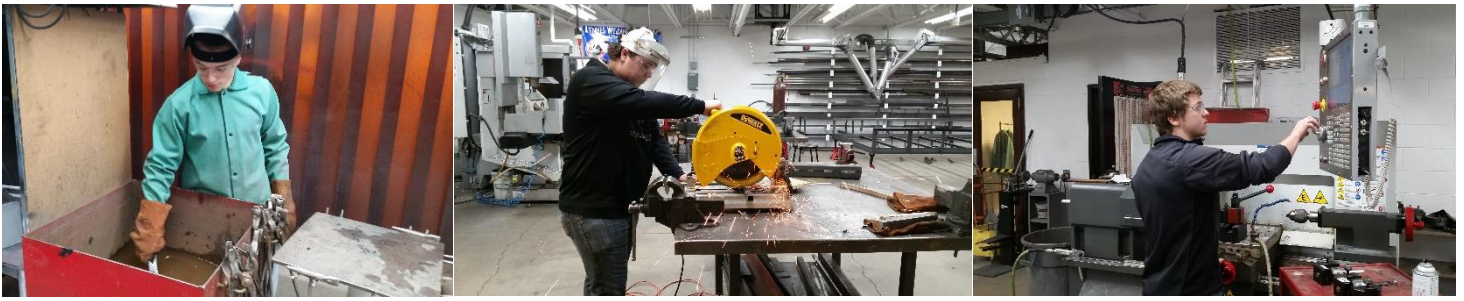


Trade & Industry – Coordinated Plan of Study	
Production	
Course Name	Cr
Welding I (NDSCS) – dual credit option	1
Welding II (NDSCS) – dual credit option	1
Automated Manufacturing I, II or III (South High)	1 to 3
Cooperative Work Experience	.5 to 4
Technology & Engineering	
Manufacturing Production Process Development	
Metals I	.5
Metals II	.5
Construction Technology	.5
Design & Drafting	.5
Energy in Motion Innovation	.5
VEX Robotics	.5
Woods I	.5
Woods II	.5

Other Electives to Consider for Manufacturing Pathway Preparation
<p>CTE Electives</p> <p>Intro to Engineering, Drafting & Architecture Computer Applications, Business and Personal Finance Fundamentals of Business Marketing Living on Your Own</p> <p>Academic Electives</p> <p>Arts Consumer Math; Geometry Environmental Science, Earth Science Public Speaking</p>

Is this Pathway for you?

- Are you curious about how things are made or how they work?
- Do you enjoy creating, inventing, or imagining new and different ways to do things?
- Do you consider yourself a leader who could be part of a team?
- Are you curious to work in a laboratory?
- Are you interested in technology and its ongoing innovation?
- Have you ever dreamed of owning your own business?
- Do you like to follow directions and use precise detail to complete a task?
- Are you curious how math/science can be applied to build things or solve problems?



North Dakota Manufacturing Related Postsecondary Programs

Pathway	Associate's Degree or Less	Bachelor's Degree	Master's Degree or More
Health, Safety & Environmental Assurance	<input type="checkbox"/> Emergency Management transfer (NDSCS) <input type="checkbox"/> Environmental Public Health (TMCC) <input type="checkbox"/> Environmental Technology/Science transfer (NHSC, SBC, TMCC, UTTC, WSC)	<input type="checkbox"/> Emergency Management (NDSU) <input type="checkbox"/> Environmental Design (NDSU) <input type="checkbox"/> Environmental Science (DSU, NHSC, SBC) <input type="checkbox"/> Health Communication (NDSU)	<input type="checkbox"/> Emergency Management (NDSU) <input type="checkbox"/> Environmental and Conservation Sciences (NDSU, SBC) <input type="checkbox"/> Environmental Engineering (NDSU, UND)
Logistics & Inventory Control	<input type="checkbox"/> Information Technology (DCB) <input type="checkbox"/> Information Processing Specialist (BSC) <input type="checkbox"/> Management Information Systems (NDSCS)	<input type="checkbox"/> Business Process Integration Management (VCSU) <input type="checkbox"/> Computer Technology Management (DSU) <input type="checkbox"/> Energy Economics and Finance (MiSU) <input type="checkbox"/> Management Information Systems (MiSU, NDSU) <input type="checkbox"/> Operations and Supply Chain Management (UND)	<input type="checkbox"/> Transportation and Logistics (NDSU)
Maintenance, Installation & Repair	<input type="checkbox"/> Electrical Lineworker (BSC) <input type="checkbox"/> Electrical Power Technology (BSC) <input type="checkbox"/> Electrical Transmission Systems Technology (BSC) <input type="checkbox"/> Electronics Technology (BSC) <input type="checkbox"/> Electronics and Telecommunications Technology (BSC) <input type="checkbox"/> Mechanical Maintenance Technology (BSC) <input type="checkbox"/> Welding Technology (BSC, BJCC, LW, NDSCS, NHSC, SBC, TMCC, UTTC, WSC) <input type="checkbox"/> Wind Energy Technician (LRSC)	<input type="checkbox"/> Industrial Technology (UND)	
Manufacturing Process Production Development	<input type="checkbox"/> Engineering Technology (BSC) <input type="checkbox"/> Power Plant Technology (BSC) <input type="checkbox"/> Process Plant Technology (BSC, TMCC) <input type="checkbox"/> Energy Services & Renewable Technician (BSC)	<input type="checkbox"/> Engineering Science (UJ, UM) <input type="checkbox"/> Industrial Engineering and Management (NDSU) <input type="checkbox"/> Manufacturing Engineering (NDSU)	<input type="checkbox"/> Industrial Engineering and Management (NDSU) <input type="checkbox"/> Manufacturing Engineering (NDSU)
Production	<input type="checkbox"/> Heating, Ventilation, and Air Conditioning (BSC, CCCC, NDSCS, TMCC) <input type="checkbox"/> Precision Machining Technology (NDSCS) <input type="checkbox"/> Production Operations/Refinery Training (NHSC) <input type="checkbox"/> Robotics, Automation and Mechatronics Technology (NDSCS) <input type="checkbox"/> Welding Technology (BSC, BJCC, LW, NDSCS, NHSC, SBC, TMCC, UTTC, WSC)	<input type="checkbox"/> Energy Management (BSC)	<input type="checkbox"/> Materials and Nanotechnology (NDSU)
Quality Assurance	<input type="checkbox"/> Instrumentation and Control Technology (BSC)	<input type="checkbox"/> Industrial Engineering and Management (NDSU)	<input type="checkbox"/> Industrial Engineering and Management (NDSU)



SkillsUSA is a local, state, and national co-curricular association serving high school, college and middle school students who are preparing for careers in trade, technical and skilled service occupations, including health occupations. SkillsUSA empowers its members to become world-class workers, leaders and responsible American citizens the SkillsUSA Framework of personal, workplace and technical skills. Contact your SkillsUSA Advisor to learn more.

Pathway	OCCUPATIONS RELATING TO THIS CAREER CLUSTER
Marketing Communications	Account Executive • Advertising Manager • Creative Director • Media Buyer • Marketing Associate • Public Information Director • Interactive Media Specialist
Marketing Management	Database Manager • Customer Service Representative • Brand Manager • Director of Market Development • Marketing Services Manager • Planning Analyst
Marketing Research	Research Associate • Research Specialist • Market Research Manager • Strategic Planner • Research Analyst • Forecasting Manager • Marketing Strategist
Merchandising	Merchandise Buyer • Operations Manager • Retail Marketing Coordinator • Receiving Clerk • Visual Merchandise Manager • Department Manager • Sales Associate
Professional Selling	Account Executive • Broker • Manufacturer's Representative • Field Representative • Sales Executive • Solutions Advisory • Client Relationship Manager



Marketing Education - Coordinated Plan of Study			
Marketing Career Cluster			
Professional Sales, Merchandising, Marketing Communication		Marketing Management	
Course Name	Cr	Course Name	Cr
Entertainment/Events Marketing	.5	Marketing I	1
Marketing I	1	Management	1
Management	1	Retail Store Management	1
Retail Store Management	1		.5
Cooperative Work Experience			.5-1
Students must earn at least 2 credits in a CTE pathway and 2 additional CTE credits to qualify for the CTE Scholarship			

Is this Pathway for you?

- Are you someone who likes to work with data to solve problems?
- Do you like to interact with all kinds of people?
- Do you like to come up with new ideas?
- Do you like to follow directions to complete a task?
- Do you consider yourself a leader who could be part of a team?
- Are you interested in being a team captain, officer, or having a role in an organization?
- Are you interested in technology and its ongoing innovation?
- Have you ever dreamed of owning your own business?

Other Electives to Consider for Marketing Pathway Preparation
<p>CTE Electives</p> <p>Computer Applications, Web Design Accounting I, II Business & Personal Finance, Business Law Culinary Academy, International Cuisine, Discovering Foods Housing and Interior Design</p> <p>Academic Electives</p> <p>Communications, Journalism I, II Creative Writing, Debate World Languages Microeconomics Publications/Media, Public Speaking Sociology Philosophy Worldview, & Ethics</p>



North Dakota Marketing Related Postsecondary Programs

Pathway	Associate's Degree or Less	Bachelor's Degree	Master's Degree or More
Marketing Communications	<input type="checkbox"/> Advertising and Marketing (DCB) <input type="checkbox"/> Advertising transfer (WSC) <input type="checkbox"/> Information & Communications Technology (NDSCS) <input type="checkbox"/> Mass Communications (BSC)	<input type="checkbox"/> Business Communication (UM) <input type="checkbox"/> Communication (UND) <input type="checkbox"/> Mass Communication (UM) <input type="checkbox"/> Public Relations (UM)	
Marketing Management	<input type="checkbox"/> Advertising & Marketing (DCB) <input type="checkbox"/> Business Management (NDSCS, RC, UTTC, WSC) <input type="checkbox"/> Information Management (NHSC) <input type="checkbox"/> Management (BSC) <input type="checkbox"/> Management Entrepreneurship (BSC) <input type="checkbox"/> Marketing (LRSC, RC) <input type="checkbox"/> Marketing and Management transfer (DCB) <input type="checkbox"/> Small Business Management (DCB)	<input type="checkbox"/> Business Management (RC, UM, VCSU) <input type="checkbox"/> Management (MiSU, NDSU, UND) <input type="checkbox"/> Management Communication (NDSU) <input type="checkbox"/> Marketing (MiSU, NDSU, RC, UM, UND, VCSU) <input type="checkbox"/> Sport & Leisure Management (UM)	<input type="checkbox"/> Management (MiSU)
Marketing Research	<input type="checkbox"/> Business Systems Analysis (RC)	<input type="checkbox"/> Business Systems Analysis (RC)	
Merchandising	<input type="checkbox"/> Art Marketing (UTTC) <input type="checkbox"/> Marketing (LRSC, RC)	<input type="checkbox"/> Apparel, Retail Merchandising, & Design (NDSU) <input type="checkbox"/> Operations and Supply Chain Management (UND)	<input type="checkbox"/> Merchandising (NDSU)
Professional Selling	<input type="checkbox"/> Entrepreneurship (CCCC, NDSCS, SBC, TMCC)	<input type="checkbox"/> Art Entrepreneurship (DSU) <input type="checkbox"/> Computer Information Systems/ Customer Relationship Management (VCSU) <input type="checkbox"/> Entrepreneurship (UND)	



DECA is a co-curricular student organization that connects the Marketing Education classroom curricular to leadership experiences. DECA's mission is to prepare emerging leaders in marketing, finance, hospitality and management. North Dakota DECA was chartered in 1954 and continues to provide opportunities for its members today. DECA members are encouraged to be involved in local, state and national competitions, community services projects, and leadership. Contact your DECA advisor to learn more about what you can get involved.



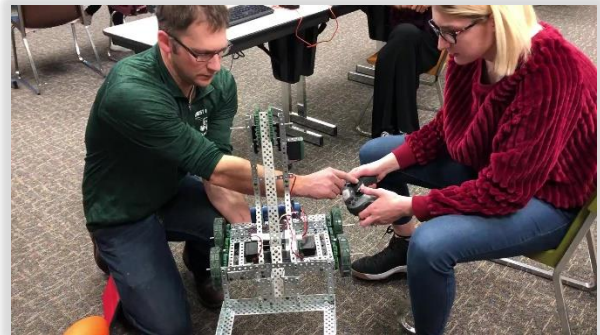
Marketing education students also can compete in Junior Achievement's Titan Competition where students apply their knowledge of business to compete in an interactive business simulation or the JA Company Program which challenges student entrepreneurial spirit to start, operate, and liquidate their own company brand. Individual and team scholarship awards are available.

Pathway	OCCUPATIONS RELATING TO THIS CAREER CLUSTER
Engineering & Technology	Aerospace Engineer • Architectural Engineer • Automotive Engineer • CAD Technician • Civil Engineer • Computer Programmer • Electrical Engineer • Mapping Technician • Mining Engineer • Metallurgist • Petroleum Engineer • Survey Technician • Biomedical Engineer • Agricultural Technician • Application Engineer
Science & Mathematics	Anthropologist • Astronomer • Chemist • Geneticist • Ecologist • Environmental Scientist • Geologist • Research Technician • Economist • Analytical Chemist • Meteorologist • Nuclear Chemist/Technician • Statistician • Atmospheric Scientist • Zoologist • Astrophysicist • Quality-Control Scientist

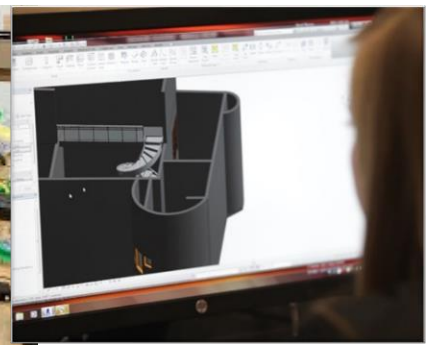
Technology & Engineering Coordinated Plan of Study			
STEM Cluster		Manufacturing Cluster	
Engineering & Technology		Manufacturing Production Process Development	
Course Name	Cr	Course Name	Cr
Robotics	.5	Metals I and Metals II	.5
Into to Engineering	1	Woods I and Woods II	.5
Principle of Engineering	1	Construction Technology	.5
Drafting & Architecture	.5	Energy in Motion Innovation	.5
Cooperative Work Experience	.5 - 4	Robotics	.5 - 4

Is this Pathway for you?

- Are you curious about how things are made or how they work?
- Do you like to interact with all kinds of people?
- Do you enjoy creating, inventing, or imagining new and different ways to do things?
- Do you consider yourself a leader who could be part of a team?
- Are you curious to work in a laboratory?
- Are you interested in technology and its ongoing innovation?
- Have you ever dreamed of owning your own business?
- Do you like to follow directions and use precise detail to complete a task?
- Are you curious how math/science can be applied to build things or solve problems?



Other Electives to Consider for Marketing Pathway Preparation
<p>CTE Electives</p> <p>Aviation I, I, UAV Intro to Agriculture, Plant Science I, II Health Sciences I, II, CNA, Prevention & Care Intro to Coding, Python, Java, AP Java, Mobile Apps Web Design, Advanced Web Design</p> <p>Academic Electives</p> <p>Anatomy/Physiology I & II, AP Physics, Chemistry, Biology Environmental Science, Genetics, Field Biology Statistics, Calculus, AP Calculus, Trigonometry World Languages Microeconomics Philosophy & Ethics, Psychology, Sociology Fine Arts</p>



North Dakota STEM Related Postsecondary Programs

Pathway	Certificate or Associate's Degree	Bachelor's Degree	Master's Degree or More
Engineering & Technology	<input type="checkbox"/> Architectural Drafting & Estimating Technology (NDSCS) <input type="checkbox"/> Engineering Technology (BSC) <input type="checkbox"/> Land Surveying and Civil Engineering (NDSCS) <input type="checkbox"/> Nanoscience Technology (NDSCS) <input type="checkbox"/> Nuclear Power Technology (BSC) <input type="checkbox"/> Petroleum Engineering Technology (BSC) <input type="checkbox"/> Petroleum Production Technology (BSC, NHSC, WSC) <input type="checkbox"/> Engineering transfer (BSC, CCCC, DCB, NDSCS, NHSC, SBC, TMCC, WSC) <input type="checkbox"/> Robotics, Automation & Mechatronics Technology (NDSCS) <input type="checkbox"/> Simulator Maintenance Technology (LRSC) <input type="checkbox"/> Technical Studies (BSC, NDSCS)	<input type="checkbox"/> Agricultural and Biosystems Engineering (NDSU) <input type="checkbox"/> Chemical Engineering (UND) <input type="checkbox"/> Civil Engineering (NDSU, UND) <input type="checkbox"/> Computer Engineering (NDSU) <input type="checkbox"/> Construction Engineering (NDSU) <input type="checkbox"/> Electrical Engineering (NDSU, UND) <input type="checkbox"/> Engineering Science (UM) <input type="checkbox"/> Geological Engineering (UND) <input type="checkbox"/> Industrial Engineering and Management (NDSU) <input type="checkbox"/> Industrial Technology (UND) <input type="checkbox"/> Manufacturing Engineering (NDSU) <input type="checkbox"/> Mechanical Engineering (NDSU, UJ, UND) <input type="checkbox"/> Petroleum Engineering (UND)	<input type="checkbox"/> Aerospace Sciences (UND) <input type="checkbox"/> Agricultural and Biosystems Engineering (NDSU) <input type="checkbox"/> Chemical Engineering (UND) <input type="checkbox"/> Civil Engineering (NDSU, UND) <input type="checkbox"/> Electrical/Computer Engineering (NDSU, UND) <input type="checkbox"/> Environmental Engineering (NDSU, UND) <input type="checkbox"/> Geological Engineering (UND) <input type="checkbox"/> Industrial Engineering & Management (NDSU) <input type="checkbox"/> Manufacturing Engineering (NDSU) <input type="checkbox"/> Mechanical Engineering (NDSU, UND) <input type="checkbox"/> Software Engineering (NDSU) <input type="checkbox"/> Sustainable Energy Engineering (UND) <input type="checkbox"/> Technology (UND)
Science & Mathematics	<input type="checkbox"/> Biology transfer (BSC, DCB, TMCC, WSC) <input type="checkbox"/> Biotechnology transfer (NDSCS) <input type="checkbox"/> Chemistry transfer (BSC, DCB, NDSCS, TMCC, WSC) <input type="checkbox"/> Environmental Science Transfer (CCCC, NHSC, TMCC, WSC) <input type="checkbox"/> Environmental Technology (DCB) <input type="checkbox"/> Mathematics transfer (BSC, DCB, NDSCS, NHSC, TMCC, WSC) <input type="checkbox"/> Natural Science transfer (NDSCS, TMCC) <input type="checkbox"/> Pharmacy transfer (WSC) <input type="checkbox"/> Physical Science transfer (NDSCS, WSC) <input type="checkbox"/> Physics transfer (BSC, WSC) <input type="checkbox"/> Science transfer (CCCC, NHSC) <input type="checkbox"/> Tribal Environmental Science (UTTC)	<input type="checkbox"/> Atmospheric Sciences (UND) <input type="checkbox"/> Biochemistry and Molecular Biology (NDSU) <input type="checkbox"/> Biology/Biological Science (DSU, MaSU, MiSU, NDSU, UJ, UM, UND, VCSU) <input type="checkbox"/> Biotechnology (NDSU) <input type="checkbox"/> Botany (NDSU) <input type="checkbox"/> Chemistry (DSU, MaSU, MiSU, NDSU, UJ, UM, UND, VCSU) <input type="checkbox"/> Computer Science (DSU, MiSU, RC, UM, UND) <input type="checkbox"/> Earth Science (MiSU) <input type="checkbox"/> Environmental Science (DSU, NHSC, SBC, UND) <input type="checkbox"/> Forensic Science (UND) <input type="checkbox"/> Geology (MiSU, NDSU, UND) <input type="checkbox"/> Horticulture (NDSU) <input type="checkbox"/> Mathematics (DSU, MaSU, MiSU, NDSU, UJ, UM, UND, VCSU) <input type="checkbox"/> Microbiology (NDSU) <input type="checkbox"/> Molecular and Integrative Biology (UND) <input type="checkbox"/> Physics (NDSU, UND) <input type="checkbox"/> Statistics (NDSU) <input type="checkbox"/> Unmanned Aircraft Systems Operations (UND) <input type="checkbox"/> Zoology (NDSU)	<input type="checkbox"/> Atmospheric Sciences (UND) <input type="checkbox"/> Biochemistry/Biomedical Sciences (NDSU) <input type="checkbox"/> Biology/Biological Science (NDSU, UND) <input type="checkbox"/> Botany (NDSU) <input type="checkbox"/> Cellular and Molecular Biology (NDSU) <input type="checkbox"/> Chemistry (NDSU, UND) <input type="checkbox"/> Coatings and Polymeric Materials (NDSU) <input type="checkbox"/> Entomology (NDSU) <input type="checkbox"/> Environmental & Conservation Science (NDSU, SBC) <input type="checkbox"/> Geology (UND) <input type="checkbox"/> Materials and Nanotechnology (NDSU) <input type="checkbox"/> Mathematics (NDSU, UND) <input type="checkbox"/> Microbiology (NDSU) <input type="checkbox"/> Physics/Astrophysics (NDSU, UND) <input type="checkbox"/> Plant Pathology (NDSU) <input type="checkbox"/> Plant Sciences (NDSU) <input type="checkbox"/> Space Studies (UND) <input type="checkbox"/> Statistics (NDSU) <input type="checkbox"/> Zoology (NDSU)



The Technology Student Association is a local, state, and national student organization created to develop skills in science, technology, engineering, and mathematics as well as business education. TSA aims to develop leadership, academic, and business management skills in the workplace among students and leaders within the community. Students currently or previously enrolled in Technology & Engineering courses join TSA and extend their learning and leadership through intra-curricular activities, and competitions. Contact your school's TSA Advisor to get involved.



Transportation, Distribution & Logistics Career Cluster



Pathway	OCCUPATIONS RELATING TO THIS CAREER CLUSTER
Facility & Mobile Equipment Maintenance	Automotive Service Technician • Collision Repair Technician • Diesel Engine Specialist • Marine Technician • Service Manager • Electrical/Electronic Technician • Industrial Electrician • Motorcycle & UTV Technician
Health, Safety & Environmental Management	Industrial Health & Safety Engineer • Safety Analyst • Environmental Scientist • First Responder • Environmental Compliance Specialist • Risk Manager
Logistics Planning & Management Services	Logistic Manager • Logistics Analyst • Logistician • Logistic Consultant • International Logistics Specialists • Logistic Engineer
Sales & Service	Marketing Manager • Sales Representative • Cargo and Freight Agent • Customer Service Representative • Customer Order and Billing Clerk • Sales Manager
Transportation Operations	Pilot • Flight Engineer • Truck Driver • Bus Driver • Dispatchers • Air Traffic Controller • Transportation Managers • Locomotive Engineer • Flight Attendant
Transportation Systems/Infrastructure Planning, Management & Regulation	Aviation Inspector • Logistics System Manager • Surveying and Mapping Technician • Motor Vehicle Inspector • Transportation Engineer • Freight Inspector
Warehousing & Distribution Center Operations	Warehouse Manager • Shipping & Receiving Clerk • Production/Planning/Expediting Clerk • Laborer & Material Handler • Industrial and Packaging Engineers



Is this Pathway for you?

- Are you curious about how things are made or how they work?
- Do you enjoy creating, inventing, or imagining new and different ways to do things?
- Do you consider yourself a leader who could be part of a team?
- Are you curious to work in a laboratory?
- Are you interested in technology and its ongoing innovation?
- Have you ever dreamed of owning your own business?
- Do you like to follow directions and use precise detail to complete a task?

Transportation, Distribution & Logistics Career Cluster			
Transportation Operations		Facility and Mobile Equipment Maintenance	
Course Name	Cr	Course Name	Cr
Aviation Technology IA	.5	Diesel Technology I	1
Aviation Technology IB	.5	Diesel Technology II Block	2
Aviation Technology II	1	Recreation Engines I	2
Unmanned Aerial Vehicle (Dual Credit)	.5	Recreation Engines II	2
Cooperative Work Experience			.5 - 4
Students must earn at least 2 credits in a CTE pathway and 2 additional CTE credits to qualify for the CTE Scholarship			

Other Electives to Consider for Transportation, Distribution & Logistics Pathway Preparation
<p>CTE Electives</p> <ul style="list-style-type: none"> Computer Applications Business and Personal Finance IT Essentials I, II Intro to Engineering Design; Principles of Engineering Construction Technology I, II Automotive Technology I, II Management/Entrepreneurship Automated Manufacturing I, II, III Welding I, II <p>Academic Electives</p> <ul style="list-style-type: none"> AFJROTC Chemistry, Physics Consumer Math, Advanced Math, Pre-Calculus, AP Calculus Communications, Public Speaking Psychology



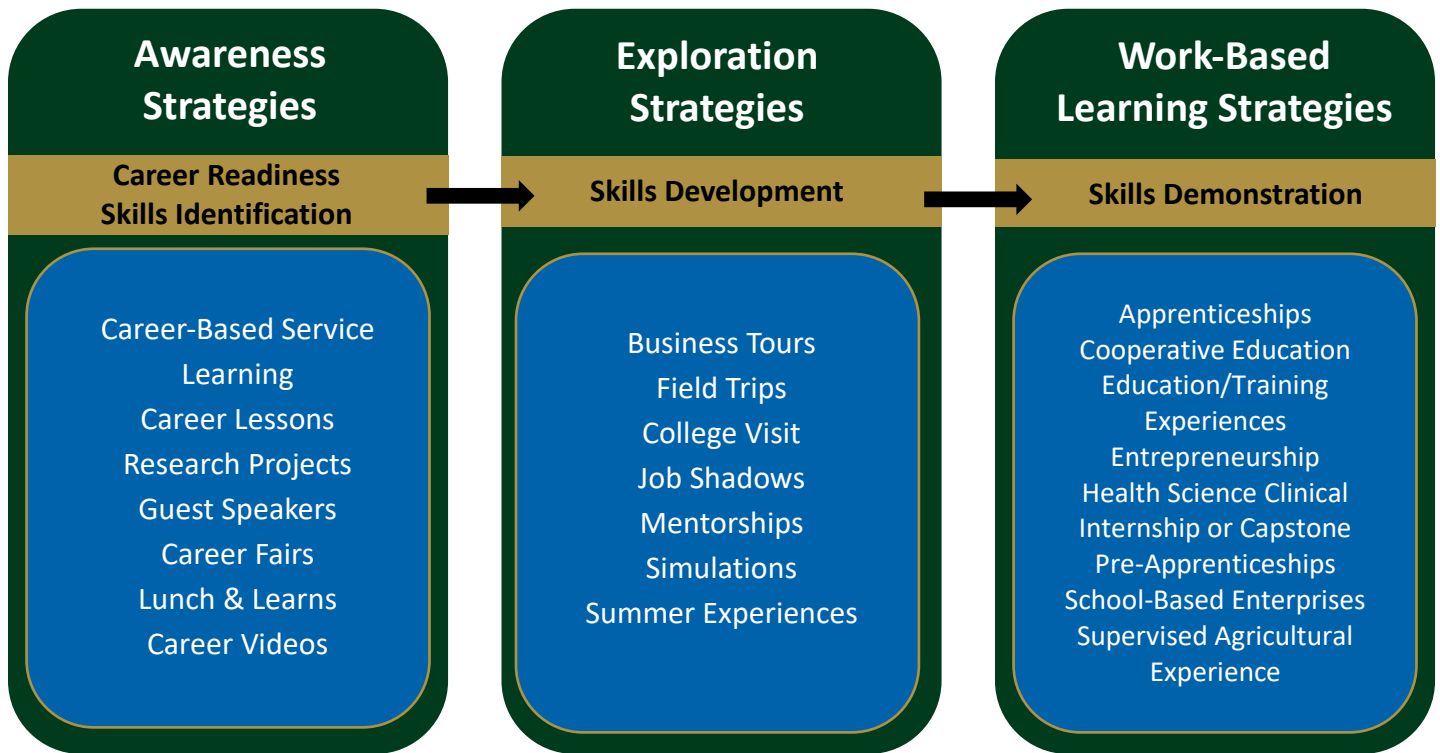
North Dakota Transportation, Distribution & Logistics Related Postsecondary Programs

Pathway	Associate's Degree or Less	Bachelor's Degree	Master's Degree or More
Facility & Mobile Equipment Maintenance	<input type="checkbox"/> Auto Collision Technology (BSC, NDSCS) <input type="checkbox"/> Auto Technology (BSC, BJCC, CCCC, LRSC, NDSCS, UTTC) <input type="checkbox"/> Diesel Technology (NDSCS) <input type="checkbox"/> Electronics Technology (BSC) <input type="checkbox"/> Electronics & Telecommunications Technology (BSC) <input type="checkbox"/> Facilities Maintenance (BJCC) <input type="checkbox"/> Geographic Information Systems Technology (BSC) <input type="checkbox"/> Power Sport Technology (NDSCS) <input type="checkbox"/> Transportation Technician (WSC)		
Health, Safety & Environmental Management	<input type="checkbox"/> Environmental Public Health (TMCC)	<input type="checkbox"/> Environmental Design (NDSU) <input type="checkbox"/> Environmental Health (DSU)	
Logistics Planning & Management Services	<input type="checkbox"/> Information Management Systems (DCB, NHSC, RC) <input type="checkbox"/> Information Processing Specialist (BSC) <input type="checkbox"/> Information Technology (DCB, LRSC, NDSCS, WSC) <input type="checkbox"/> Management Information Systems (NDSCS)	<input type="checkbox"/> Business Administration/Business Process Integration Management (VCSU) <input type="checkbox"/> Business Management (UM) <input type="checkbox"/> Information Technology Management (DSU, UM) <input type="checkbox"/> Management Information Systems (MiSU, NDSU, RC, UND) <input type="checkbox"/> Operations/Supply Chain & Logistics (RC, UND)	<input type="checkbox"/> Business Administration/Project Management (UM) <input type="checkbox"/> Transportation and Logistics (NDSU)
Sales & Service	<input type="checkbox"/> Business Management (WSC) <input type="checkbox"/> Marketing & Management transfer (DCB, LRSC, RC)	<input type="checkbox"/> Airport Management (UND) <input type="checkbox"/> Marketing (MiSU, NDSU, RC, UM, UND)	<input type="checkbox"/> Merchandising (NDSU)
Transportation Operations	<input type="checkbox"/> Airline Transport Pilot (FFS) <input type="checkbox"/> CDL/Heavy Equipment (CCCC, NHSC, SBC, TMCC, UTTC) <input type="checkbox"/> Commercial Pilot (EATC, FFS, GFKFS) <input type="checkbox"/> Heavy Equipment Operator (UTTC) <input type="checkbox"/> Instrumental/Multi-Engine Rating (EATC, FFS, GFKFS) <input type="checkbox"/> Private Pilot (EATC, FFS, GFKFS) <input type="checkbox"/> Recreational/Sport Pilot (EATC, FFS)	<input type="checkbox"/> Air Traffic Control (UND) <input type="checkbox"/> Commercial Aviation (UND) <input type="checkbox"/> Aviation Management (UND) <input type="checkbox"/> Aviation Technology Management (UND) <input type="checkbox"/> Flight Education (UND) <input type="checkbox"/> Unmanned Aircraft Systems Operations (UND)	<input type="checkbox"/> Aerospace Sciences (UND) <input type="checkbox"/> Aviation (UND)
Transportation Systems/ Infrastructure Planning, Management & Regulation		<input type="checkbox"/> Airport Management (UND) <input type="checkbox"/> Aviation Technology Management (UND) <input type="checkbox"/> Operations/Supply Chain & Logistics (RC, UND) <input type="checkbox"/> Public Policy ()	<input type="checkbox"/> Transportation and Urban Systems (NDSU)
Warehousing & Distribution Center Operations	<input type="checkbox"/> Management (BSC)	<input type="checkbox"/> Business Administration/Business Process Integration Management (VCSU)	



SkillsUSA is a local, state, and national co-curricular association serving high school, college and middle school students who are preparing for careers in trade, technical and skilled service occupations, including health occupations. SkillsUSA empowers its members to become world-class workers, leaders and responsible American citizens the SkillsUSA Framework of personal, workplace and technical skills. Contact your SkillsUSA Advisor to join.

Career Ready Work Experiences



West Fargo high school students are encouraged to participate in work related experiences to develop employability, leadership, and job-related skills.

Students completing over 75 hours of Work-based Learning or 25 hours of Community Service are Career Ready candidates toward North Dakota's Choice Ready Pathways.

Cooperative work-based learning experiences may be measured on Career Ready Practice categories for Responsible Employee, Technical Skills, Communication, Problem-solving and Teamwork.

Extended Learning Experience refers to the knowledge and skills that can be gained in a work setting. These glimpses into the real-world help students make more informed education and career decisions. Identify some of the career fields that fit your pathway before you begin your formal career work experience planning.

Job Shadow/Observation:

A Job Shadow or Observation is an opportunity to pair a student with a person who does the kind of work the student wants to explore. Job Shadow/Observations generally last 2-8 hours and are typically limited to observing the worker. Job Shadows or Observations offer the student:

- A first-hand look at the occupation
- An opportunity to observe and ask questions
- A possible “contact” in the field of work

Talk with your career advisor, school counselor, or with a career and technical education (CTE) instructor.

Cooperative Work Experience:

Cooperative Work Experience (cooperative education) is a job placement directly related to a student’s classroom instruction in career and technical education (CTE). This experience must be arranged through a CTE instructor and career advisor. As a co-op student you:

- Are monitored and evaluated by your instructor and your employer.
- Receive a grade for the co-op experience.
- May be paid by the employer.
- A student can obtain a maximum of 2 credits during their high school experience. Hours are calculated as 75 hours for ½ credit, and 150 for 1 credit.

Capstone Experience:

A Capstone Experience is course open to senior students for credit related to STEM pathways. Students must register for the course. Details about the course are in the Program of Studies under General Electives. Students are not required to be a member of the STEM Cohort but must be approved.

- A combination of coursework and work experience will be completed toward ½ credit.

Junior Educators of Tomorrow (JET):

A service-learning program to experience a teaching career in the elementary or middle school setting.

- Students must be in 12th grade, have a GPA of at least 2.0, and be registered for at least five additional classes at the high school.

Service Learning:

Service learning offers students an opportunity to do something significant for other people in their community while enhancing their educational experience and personal growth. Students may earn up to one credit toward graduation by serving as a volunteer in the school system or through a non-profit agency.

Special Services Job Experience:

Career Development Job Experiences are arranged by the special services program case manager. Students participate in a variety of activities to prepare for transition from high school to post-secondary training with emphasis on pre-vocational training. Students complete job contracts with quarterly evaluations by supervisor and case manager or career and technical resource educator (CTRE).

Diversified Work Experience:

Diversified Occupations I & II Work Experience are designed to provide students with indirect and direct education in career education related to their occupational interest. Students complete monthly journals, submit paystub to verify hours, provide supervisor evaluations, and write a final essay of their work experience to earn their Pass/Fail grade.

- Student can earn up to 1 credit if enrolled in Work Experience prior to December 31 (new students only can apply for one credit if they begin Community High in January).
- Students can earn ½ credit if enrolled in Work Experience on or before March 1 (new students only can apply for ½ credit if they begin Community High in March and enroll in March)
- CTE Course 25010 & 25120 - Grade(s): 11-12
Prerequisite: Principal approval
Credit: ½ or 1 (75 hours per ½ credit)

Work-based Learning Experience:

Option 1: A sustained interaction with industry or community professionals for a minimum of 40 hours, or Option 2: an approved educational setting simulating real-world experiences or projects based on the five Career Ready Practices categories of: Responsible Employee, Technical Skills, Communication, Problem-solving, and Teamwork.

Need Help? Ask your school counselor!

- Interest inventory results
- Assessment resources
- Career information and exploration
- Job shadowing experiences
- Service-learning experiences
- Post-secondary education options
- College catalogs, view books, & applica
- Letter of recommendation form
- Scholarships
- Financial aid information
- Job-find support
- Student career portfolios
- One-on-one career planning



Profile of a Graduate

Cheney Middle School



Jeffery Belin



Jessica McClafin



Kia Tompkins



Adam Kresbach

Heritage Middle School



Amy Meier



Trisha Twite

Liberty Middle School



Veronica Markell



Anna Levene



Dana Strand



Shaina Winning

Horace High School



Autumn Gossett



Tonya Leick

West Fargo High School



Chasity Odden-Heide



Courtney Quist



Dana Rosendahl



Tessa Roberts



Jamie Zuel



Debora Egge

Community High

Sheyenne High School



Laura Baker



Erin Beck



Krystal Haugen



Jessica Raile



Jessica Steiner



Corin Strapp

Profile of a Graduate – Convergence between academic & 21st Century Skills

Disposition	Vision	Levels of Implementation			
Collaborative	<i>Learners will work together, resolving controversy and conflict through respectful negotiations.</i>	<i>Cooperate and work flexibly in partnerships, small, or large groups</i>	<i>Share responsibility and interact respectfully to be productive both individually and as a team</i>	<i>Understand ideas, opinions and skills of others, accept and give constructive feedback</i>	<i>Show leadership and initiative as a contributing global citizen, act on constructive feedback</i>
Compassionate	<i>Learners will demonstrate their understandings of the complexities of cultures and global issues and see viewpoints beyond their own in order to positively impact the world around them.</i>	<i>Consider information from different viewpoints with respect</i>	<i>Recognize their own and others' perspectives and values</i>	<i>Explain the cultural impacts of their decisions the decisions of others, articulating perspectives and showing empathy</i>	<i>Exhibit character and take-action as a contributing global citizen to improve conditions in our world</i>
Creative	<i>Learners will take risks to develop and revise ideas.</i>	<i>Adapt existing ideas or products in a novel way</i>	<i>Use flexible thinking to generate multiple ideas</i>	<i>Apply critical thinking to explore and design original work</i>	<i>Act innovatively to impact the local, regional, or global community</i>
Resilient	<i>Learners will persist on the path toward physical and mental wellness despite impediments and challenges by defining and developing solutions to existing or future problems.</i>	<i>Demonstrate self-control and make realistic plan and take steps to enact them to solve an academic problem or emotional conflict</i>	<i>Manage strong feelings and impulses effectively, propose solutions to a simulated problem</i>	<i>Accept change, be hopeful, rely on others when needed, propose and develop solutions to real-world problems</i>	<i>Have a positive self-view and confidence in strengths and abilities Engage with real-world audiences as a contributing global citizen in an effort to solve an authentic problem</i>
Communicator	<i>Learners will connect and share ideas; and select an appropriate format to express thoughts and ideas with integrity and appropriate digital citizenship.</i>	<i>Engage in conversation and listen effectively; organize ideas and information to support learning</i>	<i>Engage in discussions; implement multiple communication formats to support learning</i>	<i>Examine and convey complex concepts; analyze content to produce coherent written or oral communication for a diverse audience</i>	<i>Analyze and synthesize to support claims; use digital media to produce and publish written and oral presentations for a diverse audience</i>
Critical Thinker	<i>Learners will systematically go beyond knowledge reproduction to reason, organize, summarize, interpret, analyze, and synthesize information in ways that generate a new understanding.</i>	<i>Read and comprehend information, discovering new ideas</i>	<i>Assess whether there is adequate reasoning and evidence to justify a claim or outcome</i>	<i>Rigorously interpret and analyze in order to summarize and problem solve</i>	<i>Use systems thinking to analyze and synthesize complete information; construct an argument</i>
Reflective	<i>Learners will take ownership in their learning by being empowered to take multiple pathways to demonstrate understanding and mastery.</i>	<i>Demonstrate understanding and goals from among teacher-provided feedback</i>	<i>Engage in peer feedback to enhance learning and provide a demonstration of an element of content understanding or mastery</i>	<i>Self-assess to enhance learning, access additional information, and provide a demonstration of content understanding and mastery</i>	<i>Reflect and create personal learning goals as a contributing global citizen, design and work plan to meet and demonstrate mastery and growth</i>
Responsible	<i>Learners will be actively engaged in their learning and demonstrate responsibility, organization, and perseverance.</i>	<i>Attentively comply with expectations for organization and participation</i>	<i>Engage curiosity and collaboration, taking pride in completing work well</i>	<i>Actively pursue achievement with a sense of importance and student agency</i>	<i>Find passion and value in a task; persist with resilience and stretch oneself despite difficulties</i>

Four Year Plan – Student Planning Template

Student Name: _____ School Year: _____ Current Career Goal: _____

School Counselor: _____ Career Advisor: _____ ACT Score: _____

Career Cluster #1: _____ Career Pathway: _____ Occupations: _____

Career Cluster #2: _____ Career Pathway: _____ Occupations: _____

Career Cluster #3: _____ Career Pathway: _____ Occupations: _____

		9 th Grade		10 th Grade		11 th Grade		12 th Grade				
COURSE	Course Name	Gr.	Cr.	Course Name	Gr.	Cr.	Course Name	Gr.	Cr.	Course Name	Gr.	Cr.
ENGLISH	English I or Honors English I		1	English II or Honors English II		1	English III or AP English III		1	English IV or AP English IV		1
MATH	Algebra I or Geometry		1	Geometry or Algebra II		1	Algebra II or Upper-level math course		1	Upper-level math (recommended)		0.5 or 1
SOCIAL STUDIES	World Geography or AP Human Geography		0.5	Western Civilization or AP Western Civilization		1	US History or AP US History		1	Government or AP Government 0.5 and Economics or Microeconomics 0.5		1
SCIENCE	Physical Science or Biology		1	Biology or Chemistry		1	3 rd Science or Physics		1			
PE/HEALTH	PE and Health 9	0.5	1	PE		0.5	PE		0.5			
	Total Required Credits		4.5	Total Required Credits		4.5	Total Required Credits		4.5	Total Required Credits (2021+)		2
ELECTIVE												
ELECTIVE												
ELECTIVE												
ELECTIVE												
CREDITS/YEAR			6, 6.5 or 7			6, 6.5 or 7			6, 6.5 or 7			6, 6.5 or 7
WORK-BASED LEARNING HOURS			Hrs			Hrs			Hrs			Hrs