

A copublication of CTE & the CTE PTO

January 11, 2024

# CHERRY TREE CHATTER

## KEY DATES

**Jan 15**

Martin Luther King, Jr  
Day - No School

**Jan 16**

Science Fair  
Registration Closes

**Jan 16, 23, 30**

Lego Club Session 1

**Jan 22**

PTO General  
Membership Meeting

**Jan 24**

Late Start

**Jan 26 - Feb 1**

Artist in Residence  
Program

**Feb 1**

Winter Family  
Fun Night

**Feb 6, 13, 20**

Lego Club Session 2

**Feb 7 & 8**

Science Fair

**Feb 14**

Valentine's Day Parties

**Mar 7 & 8**

Parents & Pastries

**Mar 16**

Parent Night Out

For announcements, updates, and reminders for CTE activities,  
follow Cherry Tree PTO on social media!

**Please note  
our event  
calendar has  
been  
updated!**

[Facebook](#) | [Twitter](#) | [Instagram](#)

**For a working calendar of  
events, please click [HERE](#).**

## PTO GENERAL MEETING

**ALL PARENTS WELCOME!**

**January 22 from 10:45-11:45**

Come hear about all second semester events,  
volunteer opportunities, and hear from our  
special guest speaker, Officer Gregory!

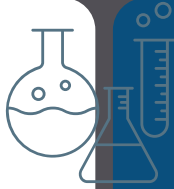
## PTO WISH LIST PROGRAM

Ms. Broad's Kindergarten class had a blast using their new boogie boards  
provided by the PTO Wish List Program to help solve addition problems!



## SCIENCE FAIR

**Register by Tuesday, January 16th!**



Does your child like to explore why things happen and ask why or what if? Do they like science and find it interesting? If so, the Cherry Tree Science Fair may be a great experience for your child!

Let your child put their scientific mind to the test and cultivate their curiosity through a Science Fair project.

Science Fair participation is optional and a fun way to explore the unknown.

**For more information and to register your child, please [CLICK HERE](#).**

## ARTIST IN RESIDENCE PROGRAM

The Artist in Residence Program will take place January 26 – February 1.

Cherry Tree Students will be taught by Bongo Boy Music School during their regular music special class!

Families can also experience Bongo Boy Music School during Winter Family Fun Night on Thursday, February 1st!



## PARENTS & PASTRIES

Save the date for Parents & Pastries!

**March 7th** (Last names A-K)

**March 8th** (Last names L-Z)

**7:00 – 7:40 a.m. in the  
CTE Cafeteria**



## PARENT NIGHT OUT

Save the date for Parent Prom!

**Saturday, March 16th!**

Interested in helping coordinate or volunteering for the event?  
Please complete [this short survey](#).

## WINTER FAMILY FUN NIGHT

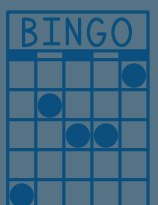
**Thursday, February 1st, 6 – 7:30 p.m.  
in the CTE Cafeteria**

Please join us for BINGO & BOOKS at the Winter Family Fun Night.

We will have a fun evening of bingo, snacks, prizes, and every child will go home with a book!

Register your family in advance to be entered for prizes!

Please check out volunteer opportunities [here](#) to help make the event a success!



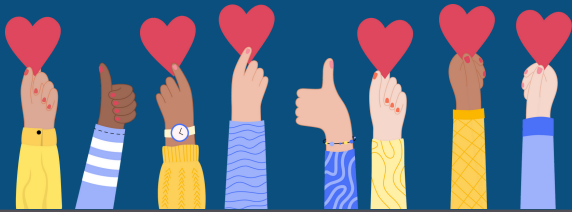
## VOLUNTEER

We need your support! Cherry Tree PTO needs your time and talent to make this Fall's events and initiatives successful!

Parents and grandparents, please fill out the Google Form below to indicate interest in volunteering this Fall.

You will need to complete and pass a background check prior to volunteering. If you have any questions, please e-mail the PTO at [cherrytreeppto@gmail.com](mailto:cherrytreeppto@gmail.com)

### VOLUNTEER INTEREST FORM



## TREASURER'S REPORT

The current [Treasurer's Report](#) is available, as well as previous reports. Learn how your PTO dollars were used to enhance students' experiences at CTE.

Budget for the 2023-2024 school year can be viewed [HERE](#).

## SMALL BUSINESS DIRECTORY

Do you own a small business?  
CTE wants to support you!

Click [HERE](#) to add your business to our CTE small business directory!



## VALENTINE'S DAY PARTIES

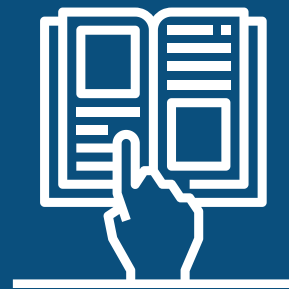
Valentine's Day parties will be held on 2/14. Students will receive a Food Services Sugar Cookie. Those with food allergies will be contacted by Nurse Pertile regarding an alternative snack option. All students who would like to participate should plan to bring in Valentine's Day cards for every child in their class. Please note that student valentines CANNOT contain food items. Room parents are securing volunteers for classrooms. All volunteers must have a current background check on file with CCS.

## 2023 – 2024 PTO SLATE

Click [HERE](#) to view the PTO Slate for the Executive and General Board for the 2023-2024 school year.

Thank you to all parents who are willing to fill these roles!

## CTE MEMBERSHIP TOOLKIT



Have you signed up for the optional [Cherry Tree Directory](#)?

If you are already a member, please update your child's teacher!

Once you create a Membership Toolkit account, you will have access to the directory and upcoming calendar events.

This is a free, optional directory for all Cherry Tree families.

# GOOD NEWS CLUB

It's  
Free!



HAVE A BLAST  
AFTER SCHOOL AT:

# GOOD NEWS CLUB®

It's  
Fun!



**FREE**



**Happening at:** Cherry Tree Elementary

**When:** Mondays Feb. 26 - March 25, 2024

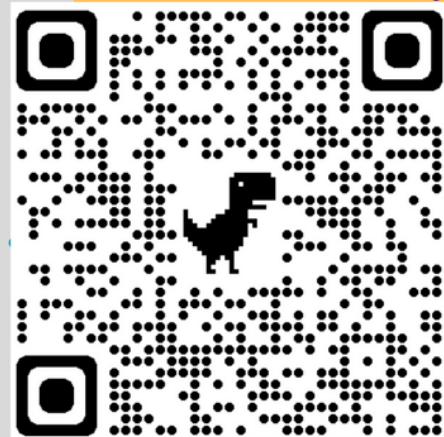
**Time:** 2:30pm - 4:00pm

**Contact:** Haley Filbert: 812-499-4730

Kids *must* have parental permission to attend.

**REGISTER  
HERE!**

Go to [cefcentralindiana.com/register.html](http://cefcentralindiana.com/register.html) or scan  
the code to register your child(ren) today!



Your child will have fun and LOVE learning about  
developing good character qualities, and moral  
values based on Biblical principles through:

- Dynamic Storytelling
- Meaningful Songs
- Creative Learning Activities
- Life-Changing Scripture Memory
- And more!

All Good News Club volunteers are trained and regularly screened in accordance with the  
*Child Evangelism Fellowship®* Child Protection Policy.

# JOIN THE CCS TEAM



**CARMEL CLAY  
SCHOOLS**  
TOGETHER WE ACHIEVE

## JOIN OUR TEAM

### SUBSTITUTE TEACHERS

- Work in a professional environment with a flexible schedule you control
- Positively impact the education of students in your own community
- Have the ability to select your preferred school site
- Daily Rate is \$80- \$90



For more information, contact Kelli Hackett at  
[khackett@ccs.k12.in.us](mailto:khackett@ccs.k12.in.us) or (317) 844-9961.



Visit our website

[www.ccs.k12.in.us](http://www.ccs.k12.in.us)

**APPLY HERE** [WWW.APPLITRACK.COM/CCS/ONLINEAPP/](http://WWW.APPLITRACK.COM/CCS/ONLINEAPP/)

# ASCENSION CARMEL CLAY SCHOOLS STUDENT THERAPY SERVICES

Ascension behavioral health partners with Carmel Clay Schools to provide on-site counseling services and skills training to children and families. Services are provided all year (including school and summer breaks).



**Ascension**



**Parents can call Ascension directly at 317-338-4951 to register and schedule your child with one of our licensed school-based counselors.**

**Ascension therapy services are administered through Ascension Stress Center and billed to the family's insurance. Financial assistance options are also available.**

# EASY, NO COST WAYS TO SUPPORT CHERRY TREE



## Cherry Tree PTO is thrilled to announce a fundraising opportunity with Shutterfly.

With their help, we've created a custom online storefront where you can shop the extensive Shutterfly collection, and for every purchase made, Shutterfly will donate 8% to our Organization. Plus, you can even use applicable Shutterfly discount codes!

Please feel free to share this website with friends and family!

<http://cherrytreepto.shutterflystorefront.com/>



## Kroger has a community rewards program!

Log in to your Kroger account and choose Community Rewards to add Cherry Tree Elementary PTO from the list of organizations.

Kroger donates a percentage of your spending to our school.

This is an easy no-cost way to support Cherry Tree!  
Register for these programs today!



# CHERRY TREE REMINDERS



## PARKING

A new city ordinance now restricts using neighborhood streets near school property as a school drop off alternative. If you are using a car to get children to/from school, please follow the procedure to bring them in/pick up on school property in the lot to the east of the school/facing Hazel Dell Pkwy.



## CARPOOL

We do our best each day to keep the line moving in an efficient way. You can help by having students ready to exit the car upon arrival, pulling all the way down in the morning to allow more cars to drop off and by having all students exit the passenger side of the car for safety. Thank you for your partnership in helping us welcome and safely deliver home 700+ students each day.



## CHROMEBOOKS

Please remember to charge your Chromebooks every night! They are a very important part of our daily routine and need to be charged and ready to go at the beginning of each day. In addition to being charged it is very important they are brought to school each day. Unfortunately, we will no longer be able to offer loaner computers to students who forget them at home.

\*Also, please remind your students to treat them with special care. We have seen an increased number of broken devices, and we are very limited in our inventory of replacement Chromebooks.



## ATTENDANCE

Cherry Tree Elementary is now using School Dismissal Manager to report absences (both in advance and same-day), late arrivals, and appointments. This online tool is preferred to phone calls. Visit [www.schooldismissalmanager.com](http://www.schooldismissalmanager.com).



## SUPPORT CHERRY TREE

Box Tops are a simple way to support Cherry Tree! Just download the Box Tops for Education App and scan your grocery receipts after you shop! Box Tops donates \$0.10 for each participating product you buy and there are always new bonus box tops opportunities! Having trouble remembering to scan your receipts? Set a customized scan reminder through the app that fits your shopping schedule!

Kroger has a community rewards program as well! Log into your Kroger account and choose Community Rewards to add the Cherry Tree Elementary PTO from the list of organizations. Kroger donates a percentage of your spending to our school.

These are simple ways for friends and families to support the Cherry Tree PTO at **NO COST** and they are an integral part of our fundraising efforts. Thanks for your support!



## STUDENT BELONGINGS

Be sure to label your student's personal belongings, such as coats/jackets, water bottles, lunch boxes, etc. If an item is missing, please be sure to have your student check the Lost and Found!

