

EASTLAKE REGISTRATION FOR 2024-25

CLASS OF 2028 INCOMING 9TH GRADERS



WELCOME TO EASTLAKE HIGH SCHOOL!

WOLF STRONG PACK STRONG (WSPS)

- HERE AT EASTLAKE, THROUGH INTENTIONAL ACTIONS, WE CAN CREATE AN ENVIRONMENT WHERE STUDENTS AND STAFF CAN SAFELY FAIL, FEEL APPRECIATED AND FEEL LOVED. THIS IS EASTLAKE. THIS IS HOME. THIS IS FAMILY. WSPS
- **NOTICE:** THE FOLLOWING PRESENTATION CONTAINS COPYRIGHTED MATERIALS USED UNDER THE MULTIMEDIA GUIDELINES AND FAIR USE EXEMPTIONS OF U.S. COPYRIGHT LAW. FURTHER USE IS PROHIBITED.



CLASS OF 2028

GRADUATION REQUIREMENTS

24 credits total

- 4 credits of English
- 3 credits of social studies
- 3 credits of math
- 3 credits of science (2 lab)
- 1 credit of CTE
- 2 credits of fine arts
- 2 credits of PE/Health (.5 healthy/1.5 PE)
- 2 credits of world language
- 4 credits of electives

WASHINGTON STATE GRADUATION REQUIREMENTS

- WASHINGTON STATE HISTORY (CURRENTLY TAKING)
- HIGH SCHOOL AND BEYOND PLAN (XELLO)
- SMARTER BALANCED ELA TEST (SBA)
- SMARTER BALANCED MATH TEST (SBA)



TYPICAL 9TH GRADE SCHEDULE

- ENGLISH 9/ANCIENT WORLD HISTORY AND CIVICS (2 CREDITS)
- BIOLOGY IN THE EARTH SYSTEM OR HONORS BIOLOGY IN THE EARTH SYSTEM
- MATH
- HEALTH/PE- *MANDATORY (DO NOT TAKE WANIC HEALTH AS AN ALTERNATIVE)
- WORLD LANGUAGE OR ELECTIVE
- ELECTIVE



BALANCED SCHEDULE



- **7 TOTAL CLASSES**
 - **ADJUSTMENT FROM MIDDLE SCHOOL TO HIGH SCHOOL**
- **5 ADVANCED COURSES TOTAL = MOST DEMANDING**
 - **ADVANCED COURSES INCLUDES AP, UW AND RUNNING START COURSES**
 - **OVER THE COURSE OF 9-12 GRADE**
- **BALANCE**
- **MENTAL HEALTH**
- **EXTRA CURRICULARS**
 - **SPORTS**
 - **CLUBS**
 - **FAMILY ENGAGEMENTS**
 - **SOCIAL COMMITMENTS**
 - **BEING A KID!**
 - **SLEEP**

What Do You Do With Your Time?

Below, we are going to fill out our weekly schedule based off of known time commitments. If your schedule changes seasonally, fill this out based on your busiest time of year - it may be temporary but the pressure and lack of time you feel during that time is very real!

	Sunday	Monday	Tuesday	Wednesday	Thursday	Friday	Saturday
5 AM							
6 AM							
7 AM							
8 AM							
9 AM							
10 AM							
11 AM							
12 PM							
1 PM							
2 PM							
3 PM							
4 PM							
5 PM							
6 PM							
7 PM							
8 PM							
9 PM							
10 PM							
11 PM							

SPECIAL EDUCATION/IEP

- IF YOU ARE ON AN IEP AND IN A STUDY SKILLS/ORGANIZATION CLASS FOR YOUR IEP, PLEASE FILL IN STUDY SKILLS/ORGANIZATION AS ONE OF YOUR YEARLONG ELECTIVES.



COMPLETE COURSE SELECTION WORKSHEET



EHS Freshman Course Selection Worksheet (Class of 2028)



Student Name: _____ Middle School: _____

Please share this information with your parents. Use this form as a worksheet to choose your classes. All freshmen are required to take yearlong English, Social Studies, Math, Science and Health/Fitness. Course descriptions and prerequisites can be found in our course catalog on the EHS website. Scan the QR code to access the course catalog. →



NOTE: 1 credit = 1 year; .5 credit = 1 semester

Credits	Class	Write in Course Code (Example: ARC152)
2 credits	9th Grade Humanities Block <input type="checkbox"/> English 9/ Ancient World History and Civics	
1 credit	Math (circle level) Algebra 1 Geometry Algebra 2 Honors Algebra 2	
1 credit	Science <input type="checkbox"/> Biology in the Earth Systems OR <input type="checkbox"/> Honors Biology in the Earth Systems	
1 credit	Health/Fitness	
1 credit	World Language and level: _____ <input type="checkbox"/> (Spanish, French, ASL or Japanese) OR Elective: _____	
1 credit	Elective _____	
7 total credits	Total (note: must total 7.0 credits)	
Alternate Classes	You must choose 3 Alternate classes for your selections above. Choose carefully as you may end up in at least one of your alternate choices. Please note: There is no priority ranking for your alternates. 1. _____ 2. _____ 3. _____	

OPEN UP THE EASTLAKE COURSE CATALOG

[STUDENTS & FAMILIES](#) > [HIGH SCHOOL COURSE CATALOGS](#) > [EASTLAKE HIGH SCHOOL](#) > [COURSES AT EASTLAKE HIGH SCHOOL](#)

Courses at Eastlake High School



DOUBLE CH

09 10 11 12

CDMS01/CDMS

2 Semesters

This PLTW intro...
principles and p...
standards and c...
software to help...
work using an e...
of the professio...

DOUBLE CHECK PREREQUISITE AND GRADE LEVEL



09	10	11	12	CADR	CREDIT EQUIVALENCY	DUAL COLLEGE CREDIT
----	----	----	----	------	--------------------	---------------------

CDM801/CDM802 - Introduction to Engineering Design

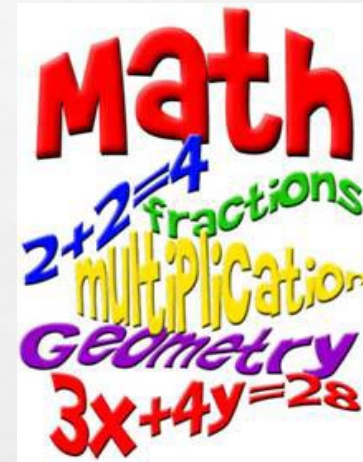
2 Semesters 1 Credit Fulfills: CTE & Math

This PLTW introductory engineering class focuses on the application of design principles and process. Through hands-on projects, students apply engineering standards and document their work. Students use industry standard 3D modeling software to help them design solutions to solve proposed problems, document their work using an engineer's notebook, and communicate solutions to peers and members of the professional community.

MATH PATHWAYS

Current Class	Register For
8 th grade Math	Algebra 1
Algebra 1*	Geometry
Geometry*	Algebra 2 (regular or honors)

*Encouraged to repeat the class if you are struggling.



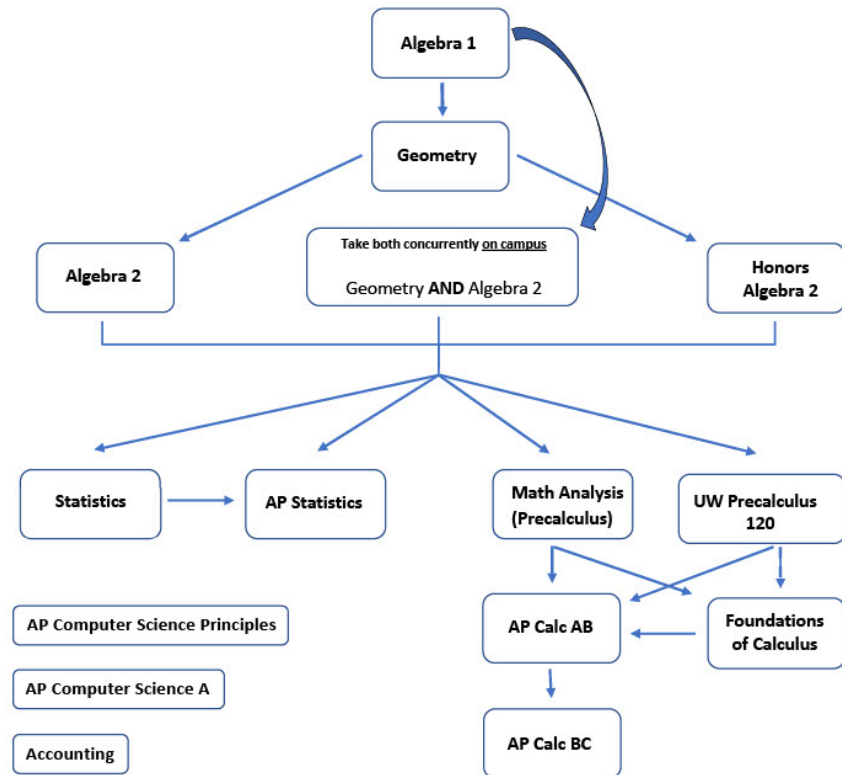
Students who enroll in Honors Algebra 2 require:

- advanced skills in taking initiative, perseverance, and group collaboration
- a strong interest in math and a strong math foundation is recommended
- ability to work at a fast pace

MATH PATHWAY

EHS Math Course Prerequisite Pathways Guide

Algebra 1, Geometry, and Algebra 2 are graduation requirements.



BIOLOGY IN THE EARTH'S SYSTEMS OR HONORS BIOLOGY IN THE EARTH'S SYSTEMS?

SIMILARITIES BETWEEN BIOLOGY AND HONORS BIOLOGY:

- YEAR-LONG COURSES
- COVER THE LIFE SCIENCE NGSS AND MANY EARTH & SPACE SCIENCE NGSS
- SUPPORT DEVELOPMENT OF SCIENCE AND ENGINEERING PRACTICES
- CENTER ON SMALL-GROUP COLLABORATION
- INCLUDE STUDENT RESEARCH AND COMMUNICATION ABOUT SCIENCE IN THE REAL WORLD
- PREPARE STUDENTS FOR UPPER-LEVEL, AP, AND UW COURSES

DIFFERENCES BETWEEN BIOLOGY AND HONORS BIOLOGY:

- BIOLOGY HAS ADDITIONAL SUPPORT FROM INTERVENTION SPECIALISTS
- HONORS COVERS MATERIAL AT A FASTER PACE AND IN GREATER DEPTH
- HONORS REQUIRES ADVANCED SKILLS IN TAKING INITIATIVE AND PERSEVERANCE
- HONORS HOMEWORK EXPECTATIONS:
 - STUDENTS WILL INDEPENDENTLY COMPLETE HOMEWORK ASSIGNMENTS
 - NO LATE WORK ACCEPTED
 - ESTIMATE ONE HOUR OF HOMEWORK FOR EACH CLASS PERIOD

Whether a student takes Biology or Honors Biology, they will be prepared for advanced science courses in the future!

CAN I DOUBLE UP ON SCIENCE IN 9TH GRADE?

- WHILE A VERY SMALL NUMBER OF STUDENTS DO TAKE AN ADDITIONAL SCIENCE COURSE ALONG WITH BIOLOGY IN THE EARTH SYSTEMS IN 9TH GRADE, WE STRONGLY RECOMMEND THAT STUDENTS WAIT UNTIL 10TH GRADE TO ENROLL IN TWO SCIENCE COURSES AT THE SAME TIME. TAKING OTHER GRADUATION REQUIREMENTS IN 9TH GRADE LEAVES MORE ROOM IN THE SCHEDULE FOR SCIENCE CLASSES IN LATER YEARS. STUDENTS WITH A PASSION FOR SCIENCE MAY TAKE TWO OR MORE SCIENCE COURSES IN THEIR 10TH, 11TH, AND/OR 12TH GRADE YEARS. ***THEY MUST ALSO MEET ANY PRE-REQUISITES FOR THE ADDITIONAL SCIENCE CLASS.**
- FOR THE RARE STUDENTS WHO DO ENROLL IN TWO SCIENCE CLASSES AS FRESHMEN, THE RECOMMENDED COMBINATION IS BIOLOGY IN THE EARTH SYSTEMS AND CHEMISTRY IN THE EARTH SYSTEMS

RECOMMENDED SCIENCE PATHWAY

9th
Grade

Biology in the
Earth's
Systems

Honors Biology
in the Earth's
Systems

10th
Grade

Chemistry in
the Earth's
Systems

Honors
Chemistry in
the Earth's
Systems

O
R

Physics in
the Universe

AP Physics 1

AND

Science
Elective
s

11th
Grade

Physics in
the Universe

AP Physics 1

O
R

Chemistry in
the Earth's
Systems

Honors
Chemistry in
the Earth's
Systems

AND

Science
Elective
s

12th
Grade

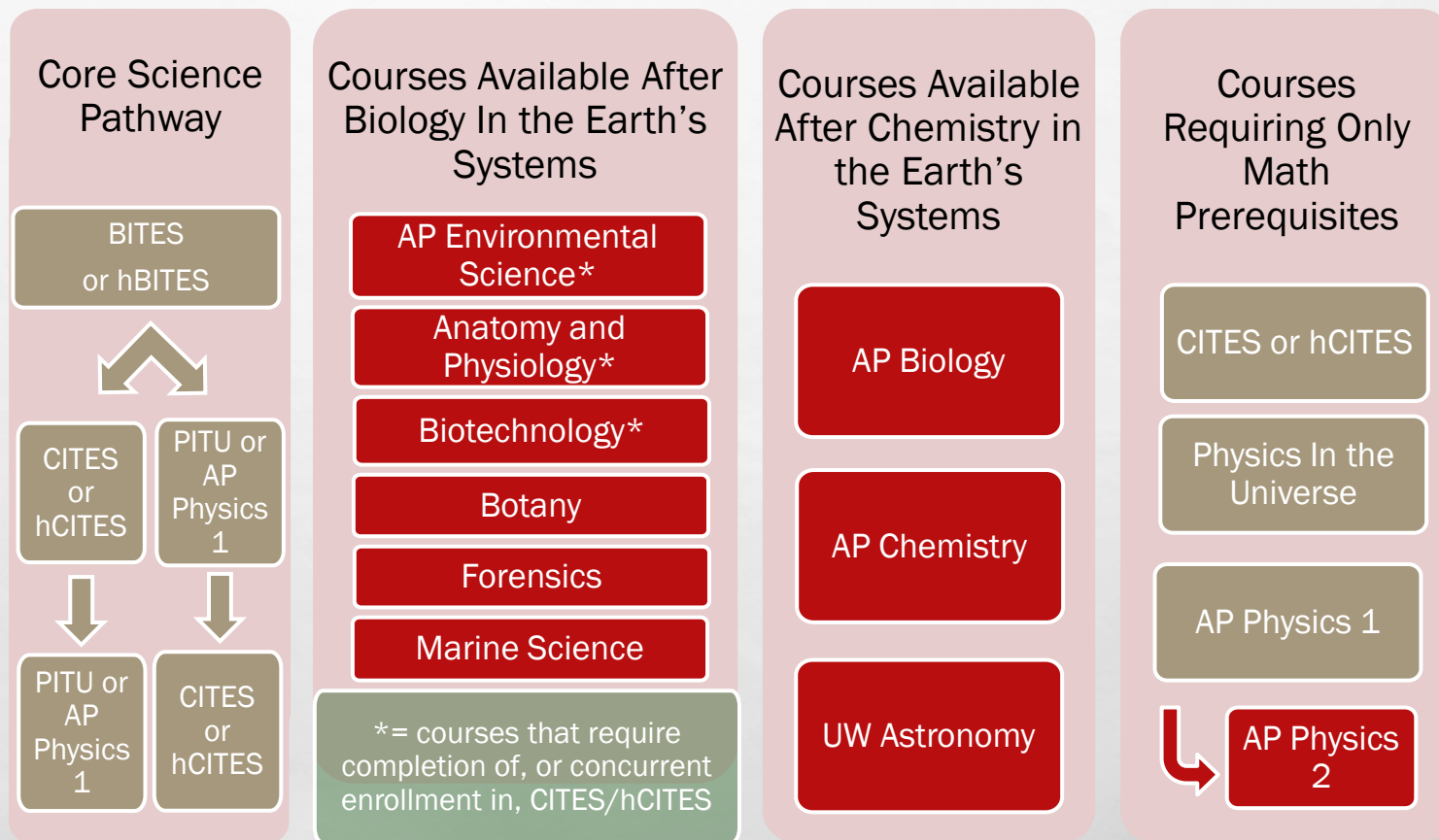
Science
Electives

Science
Electives

AP Biology, AP Chemistry, AP Environmental Science,
AP Physics 2, Anatomy & Physiology, Biotechnology,
Forensics, UW Astronomy, , Botany*, Marine Science*,
Material Science 1, Material Science 2, AP Computer
Science Principles, AP Computer Science A

* Semester Electives

ADDITIONAL SCIENCE BEYOND PATHWAY



WORLD LANGUAGE COMPETENCY EXAM AND HERITAGE SPEAKERS

WORLD LANGUAGE COMPETENCY EXAM

LWSD IS PART OF A STATEWIDE INITIATIVE TO RECOGNIZE OUR STUDENTS' DIVERSE LANGUAGE COMPETENCIES. IN ADDITION TO AMERICAN SIGN LANGUAGE (ASL), FRENCH, JAPANESE AND SPANISH HIGH SCHOOL COURSES, LAKE WASHINGTON SCHOOL DISTRICT (LWSD) ALSO OFFERS WORLD LANGUAGE CREDIT BY PROFICIENCY FOR ANY LANGUAGE.

HIGH SCHOOL STUDENTS CAN EARN UP TO A MAXIMUM OF FOUR CREDITS AND THE SEAL OF BILITERACY THROUGH THIS PROGRAM. STUDENTS ARE ASSESSED IN READING, WRITING, SPEAKING AND LISTENING.

[HTTPS://WWW.LWSD.ORG/SCHOOLS/HIGH-SCHOOL/HIGH-SCHOOL-GUIDE/WORLD-LANGUAGE-CREDIT-BY-PROFICIENCY](https://www.lwsd.org/schools/high-school/high-school-guide/world-language-credit-by-proficiency)

HERITAGE SPEAKERS

ALL SITUATIONS WILL BE HANDLED ON A CASE-BY-CASE BASIS. PLACEMENT WILL BE BASED ON THE LEVEL OF LITERACY, WHICH IS DETERMINED BY THE WORLD LANGUAGE DEPARTMENT. HERITAGE SPEAKERS ARE ENCOURAGED TO TAKE UPPER-LEVEL LANGUAGE CLASSES DURING THEIR HIGH SCHOOL CAREER.

PLEASE CONTACT ALICIA EGASHIRA AEGASHIRA@LWSD.ORG IF YOU HAVE ANY QUESTIONS.

A group of people are practicing yoga in a bright, modern studio. In the foreground, a man in a blue t-shirt and dark pants is in a lunge position with his hands in a prayer position. Behind him, a woman in a yellow top and pants is also in a lunge. To the left, a man in a green t-shirt is partially visible. To the right, a woman in a purple top is partially visible. The studio has large windows in the background, letting in natural light.

Hello
今日は。

EASTLAKE HIGH SCHOOL MUSIC PROGRAM

INCOMING 9TH GRADERS MAY REGISTER FOR

- CONCERT CHOIR
- ORCHESTRA
- CONCERT BAND



AUDITION ONLY:

- Symphonic Band and Wind Ensemble (register for Concert Band and go through audition)
- Jazz Band (register for Concert Band and go through audition)
- Chamber Choir (register for Concert Choir then go through audition)
- Orchestra 2 (Sinfonia) and Orchestra 3 (Chamber) - (register for Orchestra and go through audition in the spring)

AVID ELECTIVE

- **AN OPTION FOR FURTHER DEVELOPING ORGANIZATIONAL SKILLS AND FOUNDATIONAL SKILLS FOR SUCCESS IN MORE ADVANCED COURSEWORK**
- **THE AVID PROGRAM REQUIRES AN APPLICATION**
 - **DUE IN EARLY FEB**
- **FOR MORE INFORMATION **PLEASE SIGN UP** FOR THE AVID SESSION DURING FLEXTIME ON JANUARY 16TH.**
- **YOU CAN ALSO VISIT OUR SITE TO LEARN ABOUT THE BENEFITS:**
 - **[HTTPS://EHS.LWSD.ORG/ACADEMICS/AVID](https://ehs.lwsd.org/academics/avid)**

NEXT STEPS:

- USING YOUR PRINTED CLASS OF 2028 COURSE SELECTION WORKSHEET AND THE COURSE CATALOG CHOOSE YOUR 7 CLASSES FOR NEXT YEAR
- BE PREPARED NEXT WEEK TO INPUT YOUR REGISTRATION IN SKYWARD
- **PARENTS** ATTEND THE INCOMING 9TH GRADE PARENT PRESENTATION ON WEDNESDAY, JANUARY 10TH IN THE EHS THEATER 7:00-8:00PM.
- LOTS OF GREAT INFORMATION ON THE EHS CLASS OF 2028 WEBSITE [INCOMING FRESHMAN CLASS OF 2028 PAGE](#)

ADDING YOUR CLASSES IN SKYWARD

HOW TO REGISTER USING SKYWARD 2024-25

PART 1: HOW TO ACCESS SKYWARD AND YOUR COURSE REGISTRATION

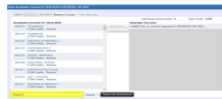
- Login to Skyward (if needed, click on *Forgot your login/password link* below the login)
- Click on 'Schedule'

PART 2: HOW TO CHOOSE AND SUBMIT COURSES

- Under Course Requests, click on "View Available Courses for 2024-2025 in Eastlake SR High" [link](#)



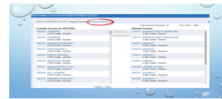
- Type in part of the course title or course code in the search box and click 'Search'



- Click on the desired course under 'Available Courses' and select 'Add Course'.
 - a. Yearlong courses: both semesters will auto-register
- Continue selecting courses until you have 7 slots filled per semester.

PART 3: SELECTING ALTERNATES

- Click on 'Request Alternates' at the top next to 'Request Courses'



- Select a course under 'Available Alternate Courses' and click 'Add Course'.
 - a. Yearlong alternates: both semesters will **NOT** auto-register; must select/add each semester [separately](#)

- Remove a course: highlight the course and select 'Remove Course' in the middle of the [page](#)

When done, you will have SEVEN (7) courses and FOUR (4) semester alternates.

If you try to select a course when you are at maximum, an error message will display.

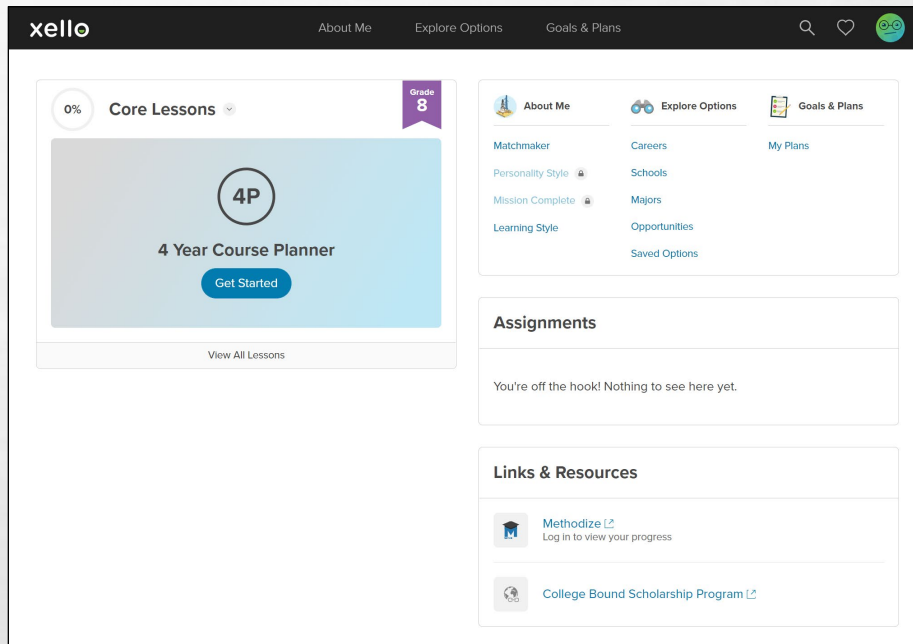
PART 4: PRINTING YOUR COURSE SELECTIONS

1. Select the print icon in the top right-hand corner and print your course selections.
2. Staple this confirmation page to the top of your course selection worksheet.

CONGRATULATIONS FUTURE WOLVES! YOU HAVE REGISTERED FOR THE 2024-2025 SCHOOL YEAR!

4-YEAR COURSE PLANNER IN XELLO

- In Xello you will find a downloadable course planner which you can use to map out the classes you will take during your 4 years of High School
- Planning ahead for your future classes will help to make sure you are completing the correct course sequence to get into higher level classes down the road (Example: making sure you take Chemistry before AP Chemistry)
- It will also help you to make sure you are meeting the subject and credit requirements for graduation



Course Planning and your HSBP

MY HIGH SCHOOL AND BEYOND PLAN 4-YEAR COURSE PLANNER WORKSHEET				
My Plan for after High School: _____ <small>(college, career, military, trade school, etc.)</small>				
My Career or Career-Cluster interest: _____				
<small>Directions: List below the courses you have taken (or plan to take) each year in high school. Remember to include at least 7 credits for each school year.</small>				
SUBJECT AREA	GR 9	GR 10	GR 11	GR 12
English <small>Graduation Requirements 4 credits</small> <small>Admission Requirements _____</small>				
Social Studies <small>Graduation Requirements 3 credits</small> <small>Admission Requirements _____</small>				
Mathematics <small>Graduation Requirements 3 credits</small> <small>Admission Requirements _____</small>				
Science <small>Graduation Requirements 3 credits</small> <small>Admission Requirements _____</small>				
Health and Fitness <small>Graduation Requirements 2 credits</small> <small>Admission Requirements _____</small>				
Arts or 1 Art and 1 PPR* <small>Graduation Requirements 2 credits</small> <small>Admission Requirements _____</small>				
World Language or PPR* <small>Graduation Requirements 2 credits</small> <small>Admission Requirements _____</small>				
Career Technical - CTE <small>Graduation Requirements 1 credit</small> <small>Admission Requirements _____</small>				
General Electives <small>Graduation Requirements 4 credits</small> <small>Admission Requirements _____</small>				
TOTAL CREDITS <small>Graduation Requirements 24 credits</small> <small>Admission Requirements _____</small>	Total 9 th Grade Credits:	Total 10 th Grade Credits:	Total 11 th Grade Credits:	Total 12 th Grade Credits:

- This course planner is one tool to help you determine your 4-year course sequence as you choose your 9th grade classes.
- This planning tool is NOT your registration submission. I just serves as a way for students to plan out their High School courses.
- For registration, students will **only be entering their 9th grade courses into Skyward.**
- As part of your HSBP, you should review and update your 4-year course planner yearly based on your actual course enrollment. This year you will submit your 4-year plan with your Middle School and next year you will review and update your plan in High School.
- For any XELLO related questions please contact Mr. Tyshawn Ward at Tward@lwsd.org