

**Now in its 24th year,**  
the La Salle Jazz Camp offers  
girls and boys with interest  
and potential in music the  
opportunity to hone their  
talents with the enjoyable  
atmosphere of one of the  
inest music programs in the  
Delaware Valley.



  
**La Salle**  
College High School  
La Salle College High School  
8605 Cheltenham Avenue  
Wyrndmoor, Pennsylvania 19038  
[www.lschs.org](http://www.lschs.org)

**2024**

**JAZZ CAMP**

**FOR BOYS  
AND GIRLS**

**JUNE 17-21**  
9:00 AM TO  
1:00 PM



**La Salle**  
College High School



# JAZZ CAMP

# OVERVIEW

# APPLICATION

## THE SCHOOL

Since 1858, La Salle has offered young men the opportunity to find their futures within strong spiritual, academic, service, and extra-curricular programs and a focus on preparation for college. Consistently ranked as among the best of the Delaware Valley independent schools in programs and facilities, La Salle's Music Department has over 6,000 square feet of dedicated space that includes a Band and Chorus Room as well as a state-of-the-art MIDI Lab and Recording Studio along with eight instruction rooms.

## THE DEPARTMENT

More than 250 students currently study instrumental and choral music in La Salle's Music Department. The Department, noted for local and regional success, offers both beginners and advanced students the opportunity to excel in a challenging and sophisticated program of performance. From the string ensemble to the lab and advanced competition bands to the Belcrofters choral group, La Salle music-makers perform with distinction throughout the Delaware Valley.

## JAZZ CAMP DAYS/TIMES

June 17-21, 2024  
9:00 AM - 1:00 PM  
Monday - Friday

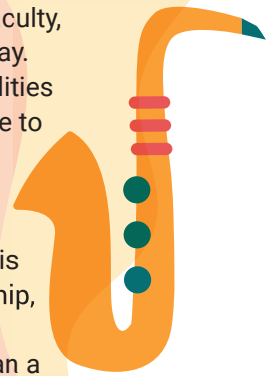
## JAZZ CAMP FEES: \$350

## PROGRAM OVERVIEW

From individual instruction to ensemble playing, participants in Jazz Camp will experience the fun and satisfaction of making music and improving their instrumental skills. The program includes general instruction in the understanding of jazz, individual lessons under the instruction of the talented La Salle College High School music faculty, and ensemble playing each day. The recreation and lunch facilities of the Dining Hall are available to participants in the program.

## DIRECTIONS

La Salle College High School is located in Springfield Township, Montgomery County and is conveniently situated less than a mile from the Paper Mill Road exit of Route 309. For a complete set of maps and directions, please visit [www.lschs.org](http://www.lschs.org)



## 2024 JAZZ CAMP INSTRUCTIONS:

If you are interested in the program, please fill out this form and return it to La Salle College High School. Registration is open to any boy or girl from private, public, or parochial schools who is entering grades five through nine in the fall of 2023.

## JAZZ CAMP TUITION \$350

Please make checks payable to:  
**MMB&E**

## QUESTIONS?

Email [MeleC@lschs.org](mailto:MeleC@lschs.org)

Student's Name: \_\_\_\_\_

Parent's Name(s): \_\_\_\_\_

Street Address: \_\_\_\_\_

Town: \_\_\_\_\_

State/Zip: \_\_\_\_\_

Home Phone: \_\_\_\_\_

Mobile Phone: \_\_\_\_\_

Work Phone: \_\_\_\_\_

E-Mail: \_\_\_\_\_

Emergency Contact: \_\_\_\_\_

Emergency Phone: \_\_\_\_\_

Instrument(s): \_\_\_\_\_

School: \_\_\_\_\_

Grade (as of Fall 2024): \_\_\_\_\_

Parent/Guardian Signature: \_\_\_\_\_

Relation To Student: \_\_\_\_\_



**La Salle College High School**  
**Jazz Camp**  
8605 Cheltenham Ave.  
Wyndmoor, PA 19038  
[www.lschs.org](http://www.lschs.org)