



LIVE OAK HIGH SCHOOL Career and Technical Education QUARTERLY NEWSLETTER

Program Spotlight



DESIGN, VISUAL, AND MEDIA ARTS PATHWAY GUIDE

DIGITAL PHOTOGRAPHY (INTRO)

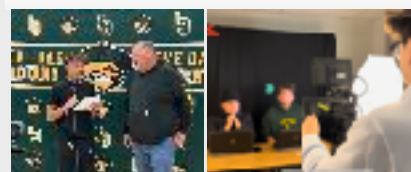
The purpose of this course is to provide a project-based visual arts program, providing students with the technical instruction and practical experiences for aspiring photographers and photo-journalists. Students are instructed on studio posing & lighting, digital lab, and digital editing. Using DSLR cameras and Adobe Photoshop & Lightroom, students experience technical and aesthetic aspects of photography, taking photos, and solving photographic problems with materials, industry standard equipment and production processes. Additional instruction induces exploration of careers, the history of photography, and the continued development of creative and critical visual thinking skills.

GRAPHIC DESIGN (CONCENTRATOR)

Graphic Design is the concentrator course for the Arts, Media and Entertainment CTE pathway. Students learn and apply fundamentals of various software applications (such as Illustrator, InDesign, and Photoshop), image editing, drawing and marketing, and layout design. Projects coordinate technical skills with organization, management, communication, ethics, and employability skills.

JOURNALISM/YEARBOOK (CAPSTONE)

The purpose of this course is to provide a project-based visual arts program, providing students with the technical instruction and practical experiences for aspiring photographers and photo-journalists. Students are instructed on studio posing & lighting, digital lab, and digital editing. Using DSLR cameras and Adobe Photoshop & Lightroom, students experience technical and aesthetic aspects of photography, taking photos, and solving photographic problems with materials, industry standard equipment and production processes. Additional instruction induces exploration of careers, the history of photography, and the continued development of creative and critical visual thinking skills.



REGISTERING FOR CTE CLASSES

With registration just around the corner, it is important that students and parents understand the structure of CTE Pathways and the course opportunities they have. While we encourage students to enroll in different programs that match their interest and skill sets, the goal however is that each student enrolled in a CTE program completes the pathway.



California CTE is organized by industry sectors. Within sectors are various pathways; and pathways can be made up of 2 or 3 courses. The first course in a 3 course pathway is an introductory course, the second course is called a concentrator, and the third course is called a capstone course. Students typically take an introductory or concentrator course in grades 9-11 and capstone courses in grades 10-12. Each course is a prerequisite for the next and therefore students must pass the introductory course before the concentrator, and the concentrator before the capstone. Any student who passes the capstone course becomes a complete and earns a blue chord to wear on graduation day to recognize the achievement.

So what should you register for? For incoming 9th grade students start with your interests. Live Oak CTE courses have videos posted on the school website that give you an idea of what the course is about, as well as video and picture images to better see the courses in action. You can also schedule a visit anytime you would like to shadow another student in one of these classes.

For current students, you would take the next course in your pathway and/or take an introductory course in another pathway. Consider what year you are and if you will have enough school years to complete a pathway. For example, a current 11th grade student may not want to sign up for an introductory course because they would not be able to complete the pathway.

LOHS CTE **Course Offerings**

Advanced Foods
Culinary
Woodworking 1 and 2
Construction 1
Construction Management.
Photography
Graphic Design
Journalism
Multimedia
Audio/Video Production
Computer Science
AP Computer Science Principles
Floral
Advanced Floral
Soil Chem
Farm to Fork
Ag Bio
Vet Science
Horticulture
3D Design and Product Development
Nutrition and Fitness
Nutrition and Performance
Drama
Advanced Drama

Sophomore year is a good year to take an introductory course in a different pathway than the course taken as a freshman because it allows 2 more school years for a student to complete the pathway they like more, or complete both pathways.

On January 9th and 10th Live Oak Agriculture Advisers and CTE Instructors will be at the middle schools helping to answer any questions about programs students and parents may have.

WORK-BASED LEARNING

Work-based learning is an instructional strategy that enhances the classroom experiences by connecting the classroom content and experience to the workplace. There are varying levels of experiences from guest speakers, field trips, job shadowing, workplace tours to internships, cooperative education, mentorships, supervised agriculture experiences, or apprenticeships. Students enrolled in CTE programs at Live Oak have multiple opportunities to connect their skills



developed in the classroom to real world applications in the workplace environment. Work-Based Learning experiences this year have included guest speakers from Chico St., SC Builders Commercial Construction, Gavilan Community College, as well as field trips to College campuses and Career Expos where students explored college and career readiness opportunities.



Students in the Floral Program consistently engage in cooperative education as they market, sell, and create floral arrangements through a subscription based plan. Each holiday students fulfill the sales orders with spectacular array of flowers.

Construction students attended a Career Expo at San Benito High School where they had the opportunity to meet companies and trade unions unique to the construction industry. Students were given advice on career planning, and had the invaluable opportunity to speak to men and women currently in the trades informing them of the expectations in the workforce.



CTE IN ACTION

