

2004 Hall of Fame Inductee

Jerome “Jerry” Sincoff

Class of 1951

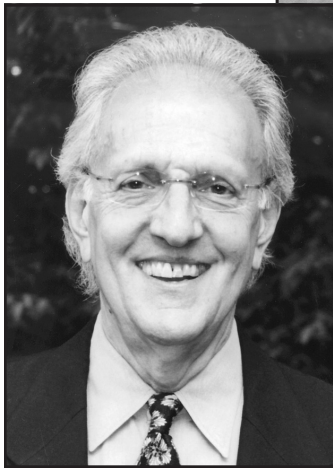
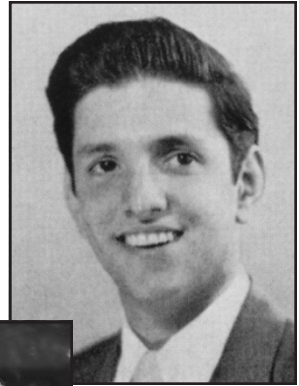
Throughout his 45-year career as an architect, Jerome “Jerry” Sincoff has had a hand in building projects within St. Louis and throughout the country. Some of the most notable include the Southwestern Bell headquarters, the renovation and restoration of St. Louis Union Station, and The National Air and Space Museum in Washington, D.C.

A graduate of Washington University’s School of Architecture, Sincoff joined Hellmuth, Obata + Kassabaum (HOK), Inc. in 1962. He

retired in 2001 as the company’s president and CEO but continued as an active consultant until 2003.

Sincoff is a member of several professional architectural boards and organizations including the American Institute of Architects (AIA) College of Fellows and the Royal Institute of British Architects. He was also the first architect elected chairman of the 100-member Construction Industry Roundtable.

A former Army officer, Sincoff is president of the St. Louis Art Museum’s board of commissioners and remains a strong supporter of Washington University and its architectural program. He and his wife are sponsors of the Jerome J. and Suzanne M. Sincoff Endowed Scholarship in the School of Architecture.



**Jerome
“Jerry”
Sincoff**

Class of 1951