

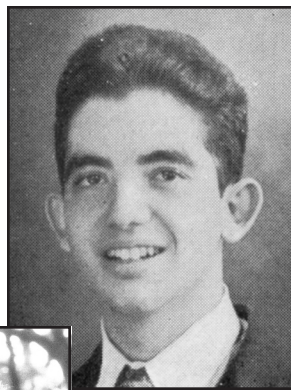
2005 Hall of Fame Inductee

Saunders Schultz

Class of 1946

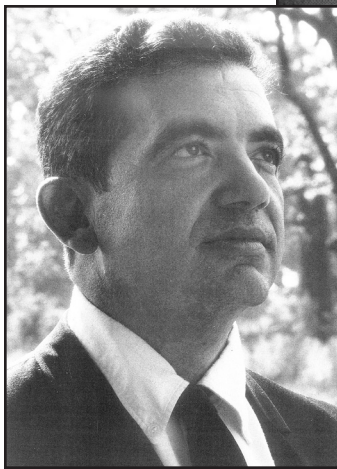
Saunders Schultz is an internationally acclaimed sculptor whose work compliments the architectural and natural surroundings where it is placed.

Schultz's public sculptures can be found throughout the United States as well as in Saudi Arabia, Singapore and Moscow. He has collaborated on projects with many of the world's leading architects including St. Louis Arch designer Eero Saarinen. Schultz is currently focusing on a proposed development that would extend the Jefferson National Expansion Memorial from St. Louis across the Mississippi River into East St. Louis, Illinois.



**Saunders
Schultz**

Class of 1946



Schultz's career has spanned 50 years. After graduating from University City High School in 1946, Schultz attended Washington University where he earned a Bachelor of Fine Arts degree in 1950. He earned a fellowship to the University of Illinois, receiving a Master of Fine Arts degree from the school in 1952. His work has been featured in numerous national publications including *ART News*, *Architectural Record*, *U.S. News & World Report* and the *Washington Post*.

Additionally, Schultz has been the featured keynote speaker at a number of professional conferences and has taught hundreds of classes at various universities and symposiums.

Schultz has received numerous awards for his work from organizations such as the Carnegie Institute and the U.S. Department of Housing and Urban Development.