

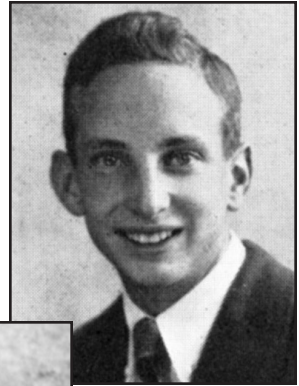
2000 Hall of Fame Inductee

Dr. Thomas F. Hornbein

Class of 1948

After graduating from University City High School, Dr. Thomas Hornbein continued his education at the University of Colorado and Washington University in St. Louis. During his years in medical school at Washington University, he became interested in how humans adapt to high altitudes, which led to his design of the oxygen mask used on his 1963 ascent of

Mount Everest. Hornbein was part of the first American expedition to reach the summit of Mount Everest. Over a period of five months, his party, opting to take an uncharted and presumably hopeless pathway, literally climbed up one side of the mountain and down the other side. The upward climb was a test of human strength, skill, and endurance and the descent was a brave and defiant move to cheat death. Hornbein is a noted author and sought-after guest speaker who holds the positions of professor and chair emeritus of the department of anesthesiology and professor of physiology and biophysics at the University of Washington in Seattle. Due to his amazing experiences, he also holds a place in history.



**Dr. Thomas F.
Hornbein**
Class of 1948

