

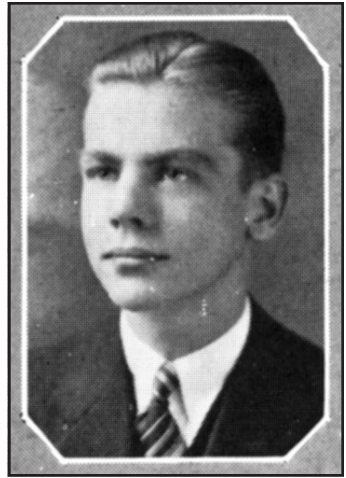
2000 Hall of Fame Inductee

William Bernoudy

Class of 1929

Awarded posthumously.

The late William Bernoudy was a world-renowned architect who, at age 21, was among the first class of students enrolled in Frank Lloyd Wright's apprentice program called Taliesin (Tally-essen).



**William
Bernoudy**

Class of 1929

After returning to St. Louis in 1935, he worked on many buildings and homes with a style that was very similar to that of his mentor, Frank Lloyd Wright. He eventually teamed up with Edouard Mutrux in a partnership that lasted nearly 30 years. In 1942, both men went to serve in World War II. Bernoudy was assigned to Washington D.C. and served as an architectural liaison officer with the Bureau of Medicine and Surgery.

Bernoudy later resumed his career and established himself by a style of design that was simple, yet dramatic. He defined a type of organic architecture, characterized by the way his homes were built to maximize the view of their surroundings. As one of his customers explained, "He built houses that had soul" and the power to change those who lived within them. When he died in 1988, Bernoudy left a legacy of architectural landmarks.