

MPS

Connecting Students & Staff to greater opportunities!

Student Device Handbook

Table of Contents

<i>MPS:1 Vision, Goals, & Rationale</i>	2
<i>MPS:1 Goals</i>	2
<i>MPS:1 Rationale</i>	2
<i>Preparing for Success</i>	3
<i>Device Provided</i>	4
<i>Part One: Device Usage, Conduct, & Responsibility</i>	5
<i>Device Protection Plan</i>	6
<i>District Content Filtering</i>	7
<i>District Content Monitoring</i>	7
<i>Digital Citizenship</i>	8
<i>Privacy</i>	8
<i>Student Internet Access</i>	8
<i>Student Home Internet Access</i>	9
<i>Charging the Device</i>	9
<i>Downloading Programs</i>	9
<i>Personalizing the Device</i>	9
<i>Accessories</i>	10
<i>Student Education in Safe & Appropriate Technology Use</i>	10
<i>Legal Issues & Jurisdiction</i>	10
<i>Device Safety Warnings & Information</i>	10
<i>Parent/Legal Guardian Right to Waive Participation</i>	10
<i>Part Two: Damaged, Lost, or Stolen Devices</i>	12
<i>Stolen Devices</i>	12
<i>Replacing Irreparably Damaged, Lost, or Stolen Devices</i>	12
<i>Part Three: Device Care & Maintenance</i>	13
<i>MPS:1 FAQs</i>	14

MPS:1 Vision, Goals, & Rationale

Moore Public Schools (MPS) is grateful to have the support of Moore community members who share our vision of utilizing technology as a tool that will increase student achievement and prepare students to thrive in increasingly digital college and career environments. To help realize our mission, [*Shaping Today's Students into Tomorrow's Leaders*](#), the MPS:1 initiative will issue Dell 3190 Windows laptops to all high school students, Dell 3100 Series Chromebooks to all junior high students in the 2020/2021 school year, and Dell 3100 Series Chromebooks to all 5th and 6th grade students in the 2021/2022 school year.

In 2015, MPS began laying the groundwork to give every student regular access to a device that can help enhance and redefine the ways they interact with teachers, peers, and academic curriculums. This painstaking process included extensive planning and research on every aspect of the initiative, which resulted in:

- Updates to the wireless network at every school site (2016-2018)
- Adoption of *Canvas*, an online learning management system (2018)
- Teacher and student device pilot programs (2019-2020)
- Implementation of a tech integration teacher certification program (2020)
- Publication of online teacher and student technology training (2020)

MPS:1 Goals

- Enhance how students *communicate, collaborate, and create*.
- Empower students to participate in global academic forums.
- Ensure all students have access to instructional technologies.
- Prepare students for postsecondary college and career success.

MPS:1 Rationale

The decision to move to a 1:1 student to device ratio is motivated by our desire to increase student achievement and prepare students to excel in the various paths they will pursue after graduation. This initiative is one strand in a comprehensive plan to ensure that our students have the knowledge and skills to adapt to quickly changing academic landscapes and compete in job markets that demand digital skills and technological know-how.

With or without access to technology, students **learn** when they *collaborate* with teachers and peers, *interact* with the world outside the classroom, *apply* knowledge to new contexts, *analyze* and *evaluate* information, *create* original products, and *publish* their work for a variety of audiences. Issuing laptops to students will not change the fundamentals of how they learn, but it will enhance and enrich their learning environments in ways not possible otherwise.

Preparing for Success

To ensure a smooth 1:1 transition, the MPS:1 teacher training program will include technology integration strategies and classroom management best practices. The [MPS Educational Technology](#) department provides teachers with access to *in-class* professional development and designs student and teacher learning opportunities that adhere to the nationally recognized [ISTE \(International Society for Technology in Education\) standards](#). These standards are the foundation for the MPS Tech Integration Scope and Sequence guidelines that will help ensure students' technology skills and knowledge will steadily progress throughout their academic careers. Visit the [MPS EdTech Teacher Tools webpage](#) for more information regarding specific resources and updates.

Students' Windows 10 laptops and Chromebooks will serve as tools that enable them to collaborate with teachers and peers; access, evaluate, and organize unprecedented amounts of information; interact with the world; and apply the knowledge they construct in the classroom to the creation and publication of academic projects and ideas. Students will participate in training sessions that include information on how to use their devices to increase academic achievements, safely use the Internet, and adhere to the guidelines of good digital citizenship. Visit the [MPS EdTech Student Tools webpage](#) for more information regarding specific resources and updates.

MPS views parent involvement and support as a crucial aspect of the 1:1 initiative. MPS respects parents' rights to place parameters on students' technology usage and monitor students' online activities and screen time. In addition to giving parents resources and training to support students as they participate in various digital curriculums, parent nights will be held several times throughout the year by the MPS Educational Technology department to provide information and demos on how parents can monitor students' coursework and online activities.

As we embark on this exciting journey to equip students and teachers with the tools they need to be successful in a rapidly changing world, we invite our stakeholders to provide feedback and keep tabs on our progress by visiting the [MPS:1 website](#).

Device Provided

Upper Elementary & Junior High (5 th -8 th)	High School (9 th -12 th)
Dell 3100 Series Chromebook and charger <ul style="list-style-type: none"> • 11.6 Inch Anti-Glare Non-Touch Display • Chrome OS • Camera, Microphone, & Headphone Jack • Spill Resistant, Shock Proof Design 	Dell Latitude 3190 2-in-1 laptop and charger <ul style="list-style-type: none"> • 11.6 Inch Touchscreen w/ Tablet Mode • Windows 10 Operating System • Camera, Microphone, & Headphone Jack • Spill Resistant, Shock Proof Design
Beginning Fall 2021: <ul style="list-style-type: none"> • 4th grade classes will have 1:1 class sets of Chromebooks. These devices will stay in the classroom. • 3rd grade will be 1:2 with Chromebooks and may also have iPads available. PreK-2 nd grade will have 1:2 iPads for students (grade-level teams may share for 1:1 iPad activities).	



Device Ownership

Moore Public Schools retains sole ownership of all devices and grants permission to the student to use the device per the rules and guidelines set forth in this handbook, the *Device Acceptance Agreement*, and the district's [Responsible Use Policy](#). Failure to adhere to these policies and guidelines can result in disciplinary actions deemed appropriate by MPS policy including, but not limited to, revocation of access to MPS technologies and networks and/or device confiscation. MPS reserves the right to monitor and log the use of its technology and network by users and examine user files and materials when deemed necessary. MPS staff retain the right to collect, inspect, and/or confiscate the device at any time, including via electronic remote access and to alter, add, or delete installed software. There is *no expectation of privacy* while using MPS computers, networks, or technology ([MPS Board Policy 2000.2260](#)).

Permission to use the device extends to school breaks and holidays, including summer. For record keeping purposes, MPS reserves the right to audit devices at any time. 7-12th grade students who need device repair or replacement will be able to submit a ticket to Incident IQ.

Elementary students, who need device repair during the school year, should let their home room teacher know and the teacher will submit an Incident IQ ticket. During school breaks, including summer, elementary parents may contact tech support at

mpstechhelp@Mooreschools.com for device repair or replacement. Please include student name, I.D. number, and detailed issue when contacting tech support. This service is available during the school year and summer.

Beginning September 1st, 2020, students who need device repair or replacement will be able to submit a ticket to [Incident IQ](#). This service is available during the school year and summer.

Part One: Device Usage, Conduct, & Responsibility

MPS devices and networks are governed by the following rules and guidelines. Students who do not follow these rules and guidelines will be subject to disciplinary action. These rules apply to *any* use of MPS network resources—on or off campus. *Network Resources* include, but are not limited to, computers, tablets, printers, scanners or other peripherals (keyboards, mice, monitors...), email, web services, servers, network files and folders, and all other technology related equipment ([MPS Board Policy 2000.2260](#)).

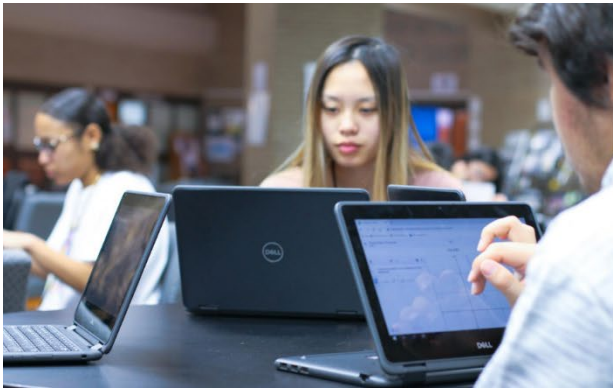
Students will:

- Keep usernames, passwords, and personal information confidential.
- Use appropriate language and be respectful of others.
- Observe and respect license and copyright agreements.
- Be responsible for device care and maintenance.
- Take appropriate steps to report damaged, lost, or stolen devices.
- Promptly relinquish possession of a device upon request.

Students will not:

- Alter, add, or delete files or software not approved by MPS or that are intended to defeat, disable, or delete district web filters, device settings, and/or network configuration settings.
- Attempt to gain unauthorized access to password protected areas of MPS networks.
- Download or stream large, Internet-based music, video, or image files not relevant to school work as this can slow access for all users—the network will be monitored for violations.
- Access, view, download, stream, display, transmit, create, or otherwise possess or disseminate material that contains pornographic, obscene, sexually explicit, pervasively lewd and vulgar, indecent or inappropriate language, text, sounds, or visual depictions.
- Use district networks or devices to harass, bully, or cyber-bully any group or individual as defined by MPS Board Policy.
- Access the data or account of another MPS student or staff member.

- Engage in any pre-meditated activity that is likely to cause substantial disruption of the school operations and learning environments.
- Forward or generate “SPAM” email, unsolicited commercial email, or “junk” email.
- View, scroll or participate in I.M. (instant messaging), chat rooms, forums, or discussion boards during class unless such activities are related to academic expectations set forth by a teacher.
- Record or stream audio and/or video of staff or students without their knowledge and consent, including, but not limited to webcams, laptops, cameras, cell phones, or other digital devices ([MPS Board Policy 2000.2245](#)).



Device Protection Plan

A [Device Protection Plan](#), \$10-\$50 annually, can be purchased to cover the cost of lost, stolen, or damaged laptops. If a student device is lost, stolen, or damaged over the summer, the student should follow the same protocols that are required during the school year by submitting a report to [Incident IQ](#)—the district’s helpdesk system. MPS Technology will contact the student and/or parent with next steps.

*Students may begin submitting helpdesk tickets September 1, 2020.

District Content Filtering

In compliance with the Children’s Internet Protection Act (CIPA), MPS will take every practical step to keep students safe when using technology. MPS will install content filtering software on all devices. It is important to know that web filtering technology *is not* infallible. The Internet evolves and changes by the second. While the district will employ the most advanced tools available to block restricted content, it is possible that restricted content may *not always* be blocked. Restricted content may contain material that is defamatory, inaccurate, abusive, obscene, profane, sexually oriented, threatening, racially or culturally offensive, illegal or otherwise inconsistent with the mission and policies of MPS ([MPS Board Policy 2000.2260](#)).

MPS expects students to use technology appropriately and follow all policies when using the Internet. MPS believes that it is critically important to ensure student safety and compliance with district policies and federal, state, and local law. MPS staff will monitor students’ online activities while in school and recommends parents/legal guardians supervise students’ technology use outside of school. Students found in violation of the district’s [Responsible Use Policy](#) will be subject to disciplinary action.

Content Filtering
The process of screening, evaluating, and subsequently granting or denying access to web pages based on adherence to the MPS Responsible Use Policy.

District Content Monitoring

MPS has the right, *but not the duty*, to monitor all aspects of students’ computer and network use including, but not limited to, sites students visit, students’ files and folders, and student communications including email, chats, all forms of messaging, blogging, vlogging, and online discussion boards and/or forums. All district staff have the right and the authority to review or monitor, with or without prior notice, the content of *all* forms of electronic communication for any reason. Reasons may include, but are not limited to, retrieval of information, investigation or resolution of network problems, prevention of system misuse, ensuring compliance with legal and regulatory requests, and enforcement of district prescribed policies and guidelines. MPS reserves the right to review, inspect the content of, and monitor all information residing on all computers and file servers for such purposes.

Content Monitoring
The review and/or observation of students’ computer or Internet activities.

Students waive any right to privacy in anything they create, store, send, disseminate or receive on district computers and computer network systems, including the Internet ([MPS Board Policy 2000.2260](#)).

Digital Citizenship

Individuals who utilize MPS technology resources are expected to abide by the principles of digital citizenship. Media Center Specialists at each school site deliver [grade based digital citizenship lessons](#) published by [Common Sense Education](#). In short, they will behave with integrity, respect, and decorum when participating in digital spaces. Users must respect the intellectual property of others by crediting sources and following all copyright laws.

Reasonable efforts will be made to ensure students are under supervision while on the network. However, it is not possible to constantly monitor all individuals' network use at all times. Students may encounter information that may be inappropriate or illegal. If a student encounters such information, the student or parent should immediately notify a teacher, administrator, or the [MPS EdTech](#) department.

Privacy

There is *no expectation of privacy* while using MPS computers, networks, or technology. MPS reserves the right to search and/or confiscate district issued devices at any time ([MPS Board Policy 2000.2260](#)).

The privacy policy *does not* extend to the camera on students' devices. MPS does not install software on any district device that allows for access to, or monitoring of, device cameras.

Any student or parent who feels a device may have been compromised, hacked, or accessed by an individual or entity outside of MPS should discontinue use of the device and immediately contact the [MPS Technology](#) department.

Student Internet Access

At school, students can access the Internet through the MPS network. Outside of school, students may use their district issued device to access the Internet through their home network or public networks. The content filter on district issued devices remains active regardless of the network the device is accessing, so sites that are inaccessible at school, will also be inaccessible outside of school. MPS recommends that parents/legal guardians monitor their student's online activities and [notify MPS of any concerns](#).

Parent Insights to Student Internet Use – Light Speed Parent Portal

Moore Public Schools Internet filter, provided by Light Speed Systems, now has a parent portal component parents can opt into to receive weekly reports on student Internet usage and analytics. Additionally, this parent portal account will also allow guardians to "pause web browsing" for their student's MPS:1 device while at home (blocking home network access). Find out more information on the [Parent Tools > Light Speed Parent Portal Info](#) webpage.

Student Home Internet Access

Students may use a district issued device to access the Internet at home or in public spaces. Students who do not have home Internet access can use their school ID badge to check out an Internet hotspot from the Media Center which will allow them to access the Internet at home. Hotspot checkouts are subject to return dates and late fines. Hotspot checkout is unavailable during summer.

Charging the Device

For grades 5-12, the MPS 1:1 initiative is a full take home program meaning students may take their devices home and are responsible for bringing them to school, **fully charged**, each day. It is the student's responsibility to maintain the charging cord. *The device should only be charged with a school issued cord.*

It is extremely important that students bring their devices to school fully charged each day as teachers will plan lessons and classroom activities based on each student having a device in his/her possession.

Downloading Programs

Approved programs, applications, and extensions will be installed by the MPS Technology Department or be made available for self-install through internal resources pre-installed on student devices. Students may not download, install, or use any software in violation of applicable copyright and license agreements.

Personalizing the Device

Students may personalize their school issued device with stickers and/or decals that are school appropriate and do not violate any MPS policy or rule. Students **may not** permanently alter the device with markings, drawings, paint, or etchings of any kind. Students will be responsible for any damages cause by the application or removal of stickers and/or decals.

*Device personalization for elementary & junior high students with Chromebooks is at the discretion of site principals. If allowed stickers/decals may be affixed to device covers/cases, not the device itself and must be removed at the end of the school year.

IMPORTANT: Each device is easily identifiable by a unique, barcoded number (Asset Tag) that is placed on the device by the MPS Technology Department. This tag **may not** be altered, covered, or removed.

Message to Students:

*When outside of school, stewardship of your district issued device is transferred to your parent(s)/legal guardian(s). Their rules about Internet and device usage **are** applicable to your district issued device. Plan to complete assignments and other academic activities within the parameters of the rules at your home.*

Accessories

The district will not provide device accessories or peripherals such as mice, stylus pens, earbuds, headphones, sleeves, cases, covers etc... Accessories may be purchased at students' sole expense. The district will not provide maintenance, repair, or support for any student purchased accessories.

The use of headphones/earbuds in class and/or during study times is at the teacher/supervisor's discretion.

Student Education in Safe & Appropriate Technology Use

It is important that students are aware of safe and appropriate use of technology for their own protection, and to ensure the safety of others. Students will receive instruction in safe, ethical, and appropriate use of technology, MPS digital resources, device care and maintenance, and basic device troubleshooting.

Legal Issues & Jurisdiction

Because the district owns and operates the equipment and software that compose our network resources, the school is obligated to take steps that ensure devices and networks are used legally. Any illegal use of network resources is prohibited (See section 4.A-J of the Responsible Use Policy). All content created, sent, accessed or downloaded using MPS resources is subject to the rules stated in this policy. MPS monitors its network and may investigate electronic incidents even if they happen after school hours and outside of school. The district reserves the right, if needed, and at its sole discretion, to remotely access, open, examine, and/or delete electronic files suspected of violating this or any other district policy.

Device Safety Warnings & Information

Students and their parents/legal guardians are strongly encouraged to review the user information for this device to understand more about its capabilities, safety warnings, and required care:

[About the Device](#)

[Device Safety Warnings](#)

[Caring for the Device](#)

Parent/Legal Guardian Right to Waive Participation

Parents/Legal Guardians have the right to waive their student's participation in the MPS 1:1 program by filing a written waiver with the school's main office. The decision to waive the right to 24/7 access can be made at any time during the school year. Parents that choose to waive participation must provide their student with a personal device that meets the minimum requirements set forth by the MPS Technology department (*See MPSOne Network below*).

MPSOne District WiFi Network

The MPS:1 policy permits students to bring personal devices such as laptops, tablets, and cell phones and connect them to the MPSOne wireless network. Any device connected to the MPSOne network is subject to the district's Responsible Use Policy. Students and staff may use personal electronic devices (e.g. laptops, mobile devices and e-readers) to further the educational and research mission of the district. School staff will retain the final authority in deciding when and how students may use personal electronic devices on school grounds and during the school day.



The MPSOne network should be used for educational purposes and should be consistent with the educational objectives of the district. While accessing the network resources of other organizations, users should adhere to that organization's rules and regulations. Any transmission of information that violates state and federal laws is prohibited.

Discipline

Any student who violates the rules and expectations relative to this Handbook and/or [Responsible Use Policy](#) will be subject to disciplinary action. If there is evidence that a violation has occurred, then a MPS administrator or designee will decide appropriate consequences in accordance with school policy and the law.

Disciplinary action could include, but is not limited to, verbal warnings, loss of technology privileges, suspension, or expulsion from school. In addition, inappropriate use of a district device or network may result in the user losing his/her right to use the device and/or take it home and/or fine(s) assessed due to intentional/negligent damage or lost/stolen devices or accessories.

MPS will cooperate fully with local, state, or federal officials in any investigation related to any illegal activities conducted through the school's electronic system or devices. The interpretation, application, and modification of this policy are within the sole discretion of MPS. Any questions or issues regarding this policy should be directed to the [MPS Technology Department](#).

Part Two: Damaged, Lost, or Stolen Devices

Devices that are damaged, lost, or stolen must be reported to the school's appointed Technology Site Tech. Technology personnel will determine if the damage, loss, or theft is due to accidental or negligent conduct. Negligence can include, but is not limited to:

- leaving equipment unattended and/or in an unlocked area;
- allowing the device to be used by individuals other than parents/legal guardians;
- using equipment in an unsafe environment;
- using the equipment in an unsafe manner;
- not adhering to the care reminders listed in Part III of this handbook.

In most cases, a student who reports a lost, stolen, or damaged device will be issued a temporary replacement. In some cases, if it is determined that device damage, loss, or theft is due to student neglect, the student may not be able to take the loaner device home.

If the student leaves the school district and does not turn in the device, MPS will make a reasonable effort to recover the device. If those efforts are unsuccessful, the device will be processed as "stolen".

Devices classified as "lost" or "stolen" will be remotely disabled and rendered useless via district asset control and management protocols.

Stolen Devices

A police report must be filed for any device reported as stolen. Any individual found to be in possession of a device that has been classified as lost or stolen will be subject to disciplinary action up to and including expulsion and prosecution in a court of law.

Replacing Irreparably Damaged, Lost, or Stolen Devices

MPS will replace devices that are irreparably damaged, lost or stolen. In cases involving student negligence, the district reserves the right to place restrictions on student access to the device including, but not limited to, when and where the student has access to the device.



Part Three: Device Care & Maintenance

Students are expected to follow all the guidelines listed in this document and take any additional common-sense precautions to protect their assigned device.

General Care

- Treat this device with as much care as you would your own property.
- Do not attempt to remove or change the physical structure of the device, including the keys, screen cover or plastic casing.
- Do not remove or interfere with the serial number, asset tag, or any identification placed on the device.
- Do not do anything to the device that will permanently alter it in any way.
- Backup your data. Never consider any electronic information safe when stored on only one device.
- Close the lid of the device when it is not in use to save battery and protect the screen.
- Never walk from one location to another with an open computer. This is applicable at school and at home.

Keep the Device in a Safe Place

- The device should never be left unattended.
- You are required to keep the device in your locked, school issued locker when not in your possession.
- The device should not be left on the floor where it might be stepped on, or within reach of small children or pets.
- Avoid positioning the device in a manner that may block airflow to cooling vents.
- Avoid storing the device in a car other than in a locked trunk.
- Avoid exposing the device to extreme temperatures (32°F to 77°F) for prolonged periods.

Devices left unattended may be confiscated by faculty or staff as a protection against theft. Unattended and unlocked equipment, if stolen, including at school, will be the student's responsibility.



MPS:1 FAQs

Which students will be receiving laptops? During the 21-22 school year, 3rd and 4th grade classes will assign in-class Dell 3100 series Chromebooks for students to use at school only, 5th – 8th graders will be assigned a “take-home” Dell 3100 series Chromebook and a charging cable, and all 9th – 12th grade students will receive a Dell 3190 Windows 10 2-in-1 Touch laptop and a charging cable.

Can students keep devices over the summer?

High school students will keep the same laptop from 9th grade through graduation, and they can take it home over the summer. 2021-2022, 5th grade students will keep the same device through 8th grade. Also beginning this year (21-22) 6th and 7th grade students will keep their Chromebooks throughout summer. All 8th grade students will turn in their Chromebooks in May.

What if a laptop is lost, stolen, or damaged?

Students are responsible for reporting lost, stolen, or damaged laptops. A [Device Protection Plan](#), \$10-\$50 annually, can be purchased to cover the cost of lost, stolen, or damaged laptops. If a student device is lost, stolen, or damaged over the summer, the student should follow the same protocols that are required during the school year by submitting a report to [Incident IQ](#)—the district’s helpdesk system. MPS Technology will contact the student and/or parent with next steps.

***Students may begin submitting helpdesk tickets September 1, 2020.**

Are parents/guardians required to purchase the protection plan?

No. Parents that choose to opt-out of the purchase protection plan will be responsible for 100% of the cost for lost, stolen, or damaged laptops. Take appropriate steps to report damaged, lost, or stolen devices. Parent/guardian may be financially responsible for damaged, lost, or stolen devices and its accessories.

Are secondary students required to participate in the 1:1 program?

No. Parents may choose to opt-out of the MPS:1 initiative. As the district moves to digital curriculums that are more cost effective and up to date, it is necessary for students to have access to a computer to complete and submit assignments, so students who are opted out must bring a personal laptop (or Chromebook for elementary and junior high) that can be connected to the MPSOne District WiFi network.

Are students allowed to bring their own laptops to school?

Yes, students can connect laptops they bring from home to the district’s MPSOne Wi-Fi signal. Students that connect their personal devices to the district's MPSOne network must adhere to the district's [Responsible Use Policy](#).

Can I personalize my school issued device?

High school students with Dell 3190 laptops may personalize with stickers or decals as long as it does not permanently alter the device.

*Device personalization for elementary & junior high students with Chromebooks is at the discretion of site principals. If allowed stickers/decals may be affixed to device covers/cases, not the device itself and must be removed at the end of the school year.

What if my child does not have internet access at home?

- Please visit our [Parent Tools > Internet Options](#) page for details about internet service.
- Free Wi-Fi can be [accessed at MPS sites](#), public libraries, and various restaurants and businesses.
- Effective July 2021, The [Emergency Broadband Benefit](#) program provides a monthly discount on broadband service of up to \$50 per eligible household.

What steps are taken to protect students when they are online?

-Users must read and sign the district's [Responsible Use Policy before being given access to the network](#).

-In accordance with the Children's Internet Protection Act, filtering software is used to block access to objectionable material; however, filtering software is not always 100% effective. Every user must take responsibility for his/her use of the network and avoid objectionable sites.

- Whether students are at home or out and about, all their internet traffic is filtered by the district software. - All students will be educated about appropriate online behavior including interacting with other individuals on social networking websites and in chat rooms, and cyber bullying awareness and response. The district will document completion of these trainings to ensure 100% completion.

- Whether students are at home or out and about, all their internet traffic is filtered by district software. Lightspeed Relay (web filtering) combined with Palo Alto (mult-method approach that replaces traditional antivirus software) protects students and staff from various threats.

- For both Windows devices with Chrome browser and our Chromebooks, Google EDU Suites allows the Technology Department to manage additional filtering through YouTube and blacklist noneducational Chrome Extensions or whitelist educational extensions that the EdTech Department has vetted.

- MPS:1 devices cannot have additional software/hardware installed outside of the approved apps already installed OR in some cases the district approved apps in the Google or Windows store.

Are students allowed to use laptops for non-school related activities?

The primary purpose of student issued laptops is for students to access digital curriculums and assignments, but students may use them for non-school related activities as well provided they adhere to the district's [Responsible Use Policy](#).

How did the district pay for this? How will they sustain the MPS:1 Initiative?

Moore Public Schools patrons voted to pass the 2015 bond issue that included 20 million dollars allocated to technology upgrades, including infrastructure, teacher computer upgrades, and more. Additionally, the CARES Act (2020) has helped supplement an accelerated the purchase for junior high devices (Chromebooks). Our Board of Education as well as a Patron Advisory Committee continues to develop a sustainable vision for MPS to continue to provide technology needs for our students, refreshing devices on a 4-year cycle.

What steps to MVA students take when they experience device issues?

If your Moore Virtual Academy device has technical issues powering up, connecting to Wi-Fi, cannot be logged into with your student account, or student password needs to be reset, please contact the Technology Department for assistance at mpstechhelp@mooreschools.com.

If your Moore Virtual Academy device has difficulty with access to Canvas, Clever, or other software applications, please contact the Education Technology Dept. for assistance at: EdTech@mooreschools.com.

For all Edgenuity issues, please contact Vista Academy at 405-735-4640.

Who can I contact for questions?

MPS Educational Technology or MPS Technology Departments

EdTech@mooreschools.com or MPSTechnology@mooreschools.com