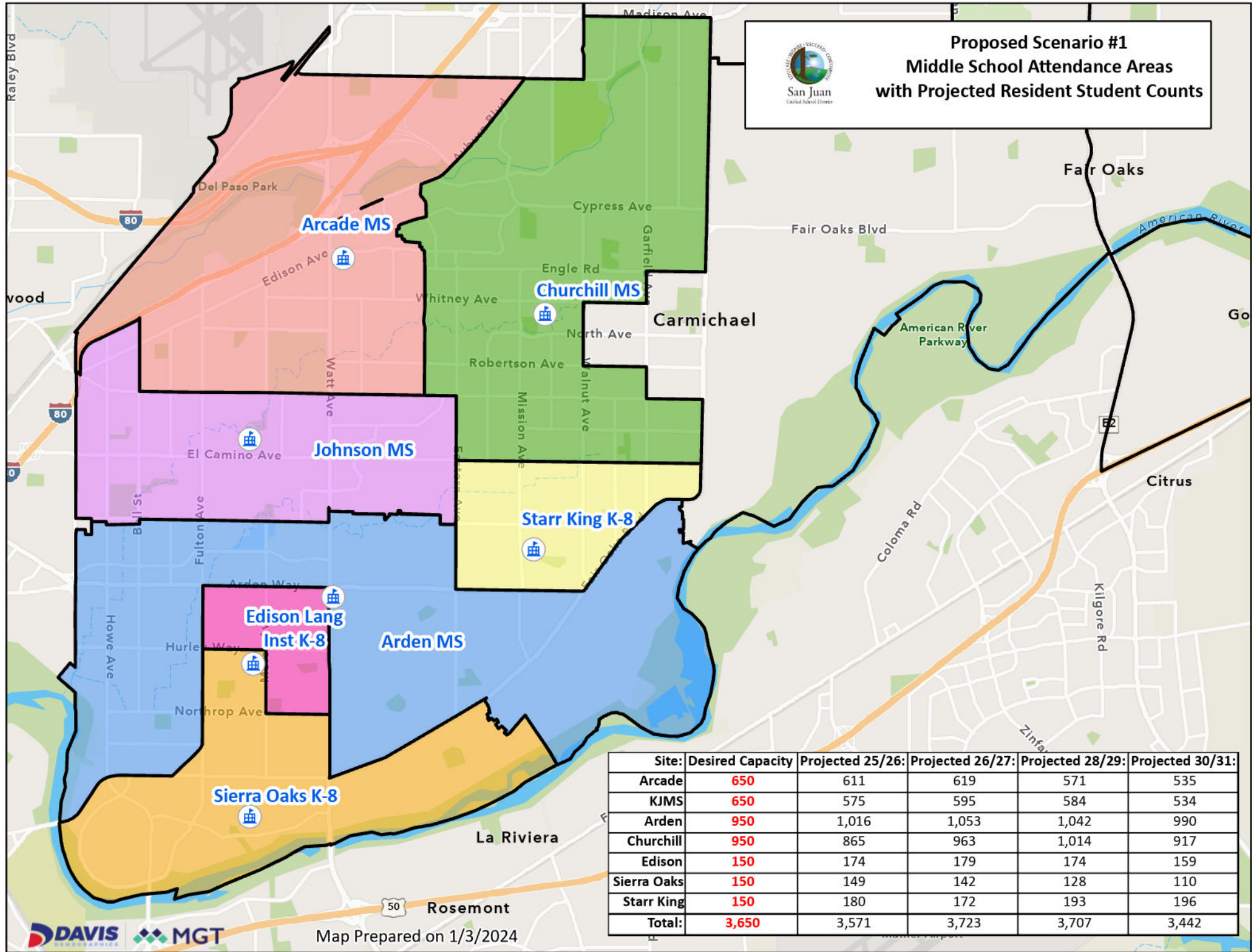




**Proposed Scenario #1
Middle School Attendance Areas
with Projected Resident Student Counts**



Site:	Desired Capacity	Projected 25/26:	Projected 26/27:	Projected 28/29:	Projected 30/31:
Arcade	650	611	619	571	535
KJMS	650	575	595	584	534
Arden	950	1,016	1,053	1,042	990
Churchill	950	865	963	1,014	917
Edison	150	174	179	174	159
Sierra Oaks	150	149	142	128	110
Starr King	150	180	172	193	196
Total:	3,650	3,571	3,723	3,707	3,442