



Роль батьків в надзвичайних ситуаціях

February 23, 2023

Proud to Partner

**Northwest Suburban
Council PTA/PTSA**

PTA[®]

PTSA[®]

everychild.onevoice.[®]

**Palatine
Police
Department**



Introductions

Video



Difference Between Crisis & Emergency

Надзвичайна ситуація- гостра потреба, яка вимагає негайних дій, таких як торнадо, землетрус, витік газу або пожежа.

Криза- ситуація, що розгортається, яка досягла критичної фази з явною можливістю вкрай небажаного результату, такого як стрілянина в школі, ситуація із заручниками або тероризм.

Types of School Emergency and Crisis

- Abduction of a Student
- Aircraft Crash
- Armed Intruder
- Bus Accident
- Civil Demonstration / Protest
- Death on Campus
- Earthquake
- Explosion
- Fire
- Flood
- Hazardous Material Release
- Hostage Situation
- Natural Gas Release
- Sexual Assault
- Structural Failure
- Suicidal Behavior
- Suspicious Object
- Tornado
- Utility Loss
- Winter Storm

Definition of School Shooting

A violent act in which someone discharges a firearm to kill or injure teachers, students, and staff inside an education institution.

(Wikipedia 2014)

Statistics

- **32** School Shootings in 2013 – 2014
- **52** School Shootings 2014 – 2015
 - K-12 Shootings = **31**
 - College Shootings = **21**
- **21** School Shootings in 2015 – 2016
- **31** School Shootings in 2016 – 2017
- **24** School Shootings in 2017 – 2018
- **24** School Shootings in 2018 – 2019
- **12** School Shootings in 2019 – 2020
 - No Shootings March 1st – September 1st, 2020 (COVID-19)
- **10** School Shootings in 2020 – 2021 (E-Learning/Hybrid)
- **34** School Shootings in 2021 – 2022

Since Sandy Hook the U.S. has experienced 3,500 mass shootings.

(Washington Post)

Notable Shootings in America

- **Columbine High School Massacre (Littleton, CO) - April 20, 1999**
 - Rapid Deployment
- **Red Lake High School Massacre (Red Lake, MN) - March 1, 2005**
 - Implementation of Lock-Down exercises were introduced nationwide
- **Amish School Shooting (Nickel Mines, PA) - October 2, 2006**
 - Police involvement in parent reunification with school officials
 - Triage forms used for locations of injured parties
- **Virginia Tech Massacre (Blacksburg, VA) - April 16, 2007**
 - “Barricade Busters” placed in squad cars for chained doors and other barricades
- **Northern Illinois University Massacre (DeKalb, IL) - February 14, 2008**
 - First look at the way Law Enforcement deals with the mentally ill
 - Working relationship between psychiatrists and police on mentally ill patients
- **Sandy Hook Elementary Shooting (Newtown, CT) - December 14, 2012**
 - Development of “Safe & Sound Schools”
 - Working relationships of School Districts and Police Agencies Nationwide
- **Stoneman Douglas School Shooting (Parkland, FL) - February 14, 2018**
 - Monitoring and Training on Social Media within Law Enforcement
- **Robb Elementary School Shooting (Uvalde, TX) - May 24, 2022**
 - Federal Gun Reform (Illinois Assault Weapons Ban???)

Deadliest
Shootings

Кожен має свою роль у безпеці

Поліція

Тренінгове
Навчання

Шкільний округ

Батьки



Safety Partners

Safety is the shared responsibility of all members of our community. District 15 has a longstanding Safety Committee that meets every trimester. This group is composed of school and District administrators as well as both police and fire/first responder teams from all municipalities in which we serve.

Our safety partners assist us with annual safety training exercises that focus on annual drills per Illinois State Board of Education (ISBE) guidelines with staff and students observed by local first responder agencies for both timely and effective implementation. They provide training and serve as members of school safety teams. Additionally, they keep us up-to-date on recommendations from industry experts.



Реєстрація відвідувачів

Оновлені процедури відвідування 10/2022

- Подзвонити в двері офісу
- Співробітники запитають ваше ім'я та прізвище
- Залиште на столі всі речі, які потрібно віддати учням
- Батьки/ опікуни та відвідувачі повинні мати при собі водійські права або державне посвідчення особи
- Водійські права або державне посвідчення особи будуть перевірені через Раптор систему
- Відвідувач заповнює форму реєстрації
- Відвідувач отримує спеціальну перепустку, яку потрібно носити перебуваючи в будівлі
- Покидаючи офіс, ви повертаєте перепустку та отримуєте своє посвідчення особи
- Зоповніть форму реєстрації відвідувача

Your Role as a Parent/Guardian

- **What do you do if you are at the school during an Emergency/Crisis Situation?**
 - Secure & Teach (previously Soft Lockdown)
 - Hard Lockdown
 - Shelter-in-Place
 - Evacuation
 - Relocation
- **What do you do if you are home/at work during an Emergency/Crisis Situation?**

Defining Emergency Situations

Secure and Teach Procedures—Secure and Teach is primarily used in two different scenarios.

1. Conditions exist outside school building that could potentially present a threat to safety of students and staff.
2. Situation inside the building where school or local emergency responders need to keep students and staff in classrooms and away from an incident.

During Secure and Teach, students and staff can continue normal classroom activities, but should not leave classroom or offices until advised to do so.

Additionally, no one is allowed to enter or leave the building until the Secure and Teach has ended.

Hard Lockdown Procedures—used when a serious/volatile situation exists that could jeopardize physical safety of students and staff. During a Hard Lockdown, staff members will ignore all bells and fire alarms unless they receive verbal instructions from local emergency responders or the conditions (fire, structural damage, etc.) warrant the evacuation of the area. Additionally, no one will be allowed to enter or leave the building until the Hard Lockdown has ended.

Defining Emergency Situations Cont.

Evacuation (Relocation) Procedures—evacuation may be necessary whenever it's determined that it's safer outside building than inside building. In situations where weather is inclement or students and staff will be required to evacuate for an extended period of time, an off-campus evacuation (Relocation) may be initiated rather than evacuating to the assembly area. Conditions requiring an evacuation may include a fire, an explosion, a hazardous material release within the building, or some type of structural failure in the building.

Severe Weather Watch—A tornado watch means that conditions in the area are such that a tornado is *possible*. No siren will be sounded when the National Weather Service issues a tornado watch. During a tornado watch, all activities should continue as usual. Classes should be dismissed at the regular time, etc., but children who ride buses should be kept inside the school until their buses arrive, and students who walk home should be advised to go straight there.

Severe Weather Warning—A tornado warning means a tornado has *actually been sighted or has touched down* in District 15 or the surrounding area. When a tornado warning is issued, sirens are activated by Palatine, Rolling Meadows, and Hoffman Estates police departments. This warning will be a three-minute, sustained, steady blast.

Reasons for a Hard Lockdown

Hard Lockdown is used when a serious/volatile situation exists that could jeopardize physical safety of students and staff.

Reasons to call a hard lockdown:

- Intruder
- Active Shooter
- Unruly Parent / Visitor
- Implied or Use of Weapon on School Grounds
- Hostage Situation
- Sexual Assault on Campus
- Abduction of Student on Campus

****Anyone can call a hard lockdown.**

Parent/Guardian Role in a Hard Lockdown

During a Hard Lockdown – parents/guardians should not come to school.

On School Grounds

- Visitor, PTA, Program Assistant – important to check into the front office
 - This is how we know who is in our schools – helps with accountability
- Be aware of your surroundings
- Have a plan!
- Run, Hide, Fight (Survive)

Parents/Guardians at Home

- Information will be shared
- Meeting locations shared if they need to be utilized
- **TRAFFIC (Barrington H.S.)*

What Should Parents Do DURING Emergency Situations?

A parent's first instinct may be to go to the school immediately. **Parents are instructed NOT to go to school so Emergency Officers can have full access to school and surrounding area** without extra cars and chaos of parents being there. **Staying clear of the school will help ensure a swift arrival of first responders.**

Stay home/workplace to receive updates via email / text / phone calls, OR **wait to be informed of a location in the community where you can go to receive real-time updates** from law enforcement / district officials / designated liaisons.

The Palatine Public Library is our offsite information hub.

Each municipality with schools in District 15 (Hoffman Estates, Palatine, and Rolling Meadows) have a number of locations that can be used to provide in-person information about an emergency to parents and community members. To maintain both flexibility and to ensure security of various sites, additional locations in each community will not be shared until the day of an incident.

Інформаційний сайт для батьків/опікунів

Інформаційний сайт для батьків

- Перші 30 хвилин
- Чого очікувати
 - Кадрове забезпечення
 - Шкільний округ
 - Правоохорона

Що відбувається далі?

Example:

[Louisville School Shooting, September 30, 2014](#)

(Student Shot at Fern Creek HS)

Евакуація/ Переселення

- **На території школи**
 - Евакуація
 - Місця збору
 - Автобуси/пішоходи
 - **Ви - частина школи**
- **Батьки вдома**
 - Залишайтеся спокійними і терплячими
 - Інформація
 - Місце події
 - Возз'єднання
- **Оновлення контактної інформації є важливим моментом під час надзвичайних ситуацій**
(*Marion Jordan School, St. Theresa School*)

What Should Parents Do AFTER Emergency Situations?



When the emergency is over, parents will be told where to go to be reunited with their child(ren).

- Wait in car, drive to pick up location, be prepared to tell staff who their child is, show ID, and wait for child to be brought out to car.
- Only those on Emergency Card (approved pick up) would be able to pick up child.
- ID must be shown in order for child to be released to adult.

Relocation Example

Marion Jordan's Evacuation

- Water main break left Marion Jordan without running water
- School relocated to pre-arranged offsite location
- District communication
 - Notification of evacuation
 - Notification that students/staff arrived safely
 - Information about pick-up procedures
- Parents/guardians waited patiently and did not rush to the scene (way to go, MJ parents)
- Parents/guardians asked to produce a state ID for verification when picking up their child(ren) did so



Як батьки можуть підготуватися до надзвичайних ситуацій?

- **Переконайтеся, що ваша контактна інформація актуальна та своєчасно оновлена** в Infinite Campus і включає точні номери мобільних телефонів та адреси електронної пошти, щоб не було затримки в зв'язку з вами в разі надзвичайної ситуації.
- Переконайтеся, що ви вказали довірених дорослих як екстрені контакти в Infinite Campus, які можуть забрати вашу дитину, якщо ви недоступні. Всі без винятку учні будуть відпущені тільки своїм батькам.
- Пам'ятайте - соціальні мережі є потужним інструментом комунікації, але в разі кризи або надзвичайної ситуації покладайтесь на інформацію, надану шкільними чиновниками та правоохоронними органами по телефону, текстовим повідомленням та / або електронною поштою, і утримайтеся від публікації неповних або непідтверджених деталей, які можуть викликати плутанину та / або страх у суспільстві.

How Can Parents Prepare BEFORE Emergency Situations?

Although there are many safety measures in place at each school in the District, an emergency or crisis situation may still occur. Parents should consider the following actions before, during, or after an emergency or crisis situation:

- Speak regularly with your child(ren) about the importance of reporting any concern(s) that they have about safety to an adult either at school or at home so that their concern can be acted upon.
- Ask your child(ren) questions about school safety.
- Similarly, contact building administration to report any concerns that you have regarding school safety so that your concern(s) can be acted upon.
- Speak with your child(ren) about social media awareness - ***upcoming Parent University on March 16 on Social Media Presented by the Palatine Police Department***

District 15's Commitment to School Safety

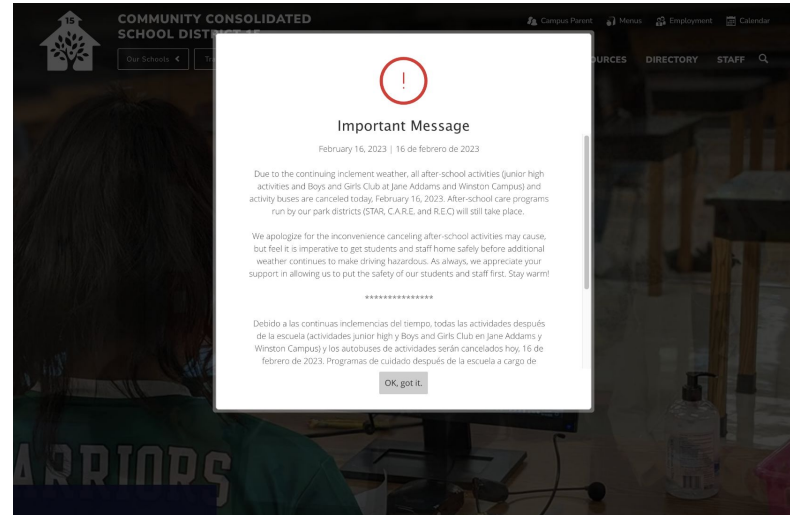
- Secure Entry Vestibules
- Visitor Management System
- Panic Buttons
- 911 and integrated intercoms
- CrisisGo
- Strobe lights
- Signage
- Playgrounds
- School Resource Officers (SRO)
- Surveillance Cameras



Emergency Communication

How we will communicate with families:

- Email
- Text message
 - Referencing email
- Website pop-up Banner
 - Message
 - Instructions
 - Next Steps
- Robocall
- **Social Media*



Переконайтесь, що ваша інформація актуальна

- **ЦЕ НАДЗВИЧАЙНО ВАЖЛИВО!**
- Переконайтесь, що ваша контактна інформація та контактна інформація для надзвичайних ситуацій, перелічені на батьківському порталі Infinite Campus, є точними. Якщо це не точно, зверніться до шкільного офісу вашої дитини, щоб оновити свою інформацію
- Переконайтесь, що ви також ввели номер телефону в розділі "Телефон 2", щоб переконатися, що ви отримуєте текстові повідомлення
- Коли ви реєструєтесь та / або переєструєте свою дитину (дітей), це чудовий час для перегляду інформації, якою ви ділитесь з Округом.
- Округ 15 використовує систему зв'язку Blackboard для сповіщення батьків / опікунів по телефону, текстовим повідомленням, електронною поштою та мобільним додатком D15. Всі батьки / опікуни та персонал реєструються автоматично.



What Questions Do You Have?