

Troy Schools District

**RFP #2324-12
BP#1A – Elementary School Playgrounds Phase #1 –
Addendum #1
January 9, 2024**

Content Included in this Addendum:

**Cover Page (1 Page)
Barton Malow Write Up (1 Pages)
TMP Architecture, Inc. Addendum #1 (10 Pages)**

TOTAL PAGES: 12 Pages

January 9, 2024

Troy School District – RFP #2324-12
BP #1A – Elementary School Playgrounds Phase #1

Addendum #1 Bidder Clarifications

A. General Clarifications

- We plan to award contracts in two groups of three schools. Group one includes work at Martell, Troy Union, and Hill. Group two includes work at Bemis, Barnard, and Morse. Additionally, we reserve the right to award all six schools to one contractor. This will apply to both the sitework and concrete and asphalt paving bid categories.

B. Clarifications and Additions to Work Scopes

- Concrete:
 - This contractor is to include furnishing and installation of signs added in addendum #1.
 - Additional markup made on each site remediation drawing.

C. RFI Responses

Q: Do we need specifications for cast-in-place concrete, asphalt paving, earthwork, sub-drainage and drain tile, fences and gates, or any other standard civil spec sections? It appears that the only spec sections included are provided by the playgrounds architect.

A: Specs provided on drawings.

Q: I see verbiage for this category to install topsoil and seed disturbed. I am guessing all backfilling, topsoil and seeding is by the sitework category.

A: The paving contractor is responsible for backfill, restoration, and seeding around the jogging track. All other areas fall under the sitework contractors' responsibility.

Q: Who is responsible for sealcoating?

A: The Paving Contractor is responsible for sealcoating and any pavement markings.

Q: Can the schools be awarded individually?

A: The project can be awarded three ways: Contractors can be awarded work at Martell, Troy Union, and Hill, or awarded work at Bemis, Barnard, and Morse or all six.

Q: Is the \$10,000 allowance for each school or a total of \$10,000 between all the 6 schools?

A: There is a \$10,000 allowance in total.



Addendum

Date November 29, 2023
Project Name Troy School District - Barnard Elementary School Playground, Bemis Elementary School Playground, Hill Elementary School Playground, Martell Elementary School Playground, Morse Elementary School Playground, Troy Union Elementary School Playground
TMP Project No(s). 22086B, 22087B, 22090B, 22092B, 22093B, 22095B
Bid Package No. 01A
Addendum No. One (1)

The Bidding Documents are modified, supplemented, or augmented as follows and the Addendum is hereby made a part of the proposed Contract Documents.

The following Drawing(s) and Attachment(s) are issued with this Addendum:

Drawing No(s): 22087B C2.1, C2.2, C2.3
22090B C2.1, C2.2
22092B C2.1
22093B C2.1, C2.2

Item No. Civil Drawing Changes

22087B Bemis Elementary School Playground

CD-1 Refer to Drawing Nos. C2.1, C2.2, & C2.3 (reissued):
A. Install communication board as indicated on Drawing C2.1.
B. Install communication board as indicated on Drawing C2.2.
C. Install communication board as indicated on Drawing C2.3.

22090B Hill Elementary School Playground

CD-2 Refer to Drawing Nos. C2.1 & C2.2 (reissued):
A. Install communication board as indicated on Drawing C2.1.
B. Install communication board as indicated on Drawing C2.2.

November 29, 2023

Troy School District - Barnard Elementary School Playground, Bemis Elementary School Playground, Hill Elementary School Playground, Martell Elementary School Playground, Morse Elementary School Playground, Troy Union Elementary School Playground

TMP Project No(s). 22086B, 22087B, 22090B, 22092B, 22093B, 22095B

Bid Package No. 01A

Addendum No. One (1)

Page 2 of 2

22092B Martell Elementary School Playground

CD-3

Refer to Drawing No. C2.1 (reissued):

- A. Install communication board as indicated on Drawing C2.1.

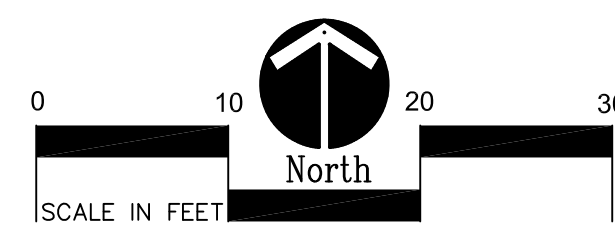
22093B Morse Elementary School Playground

CD-4

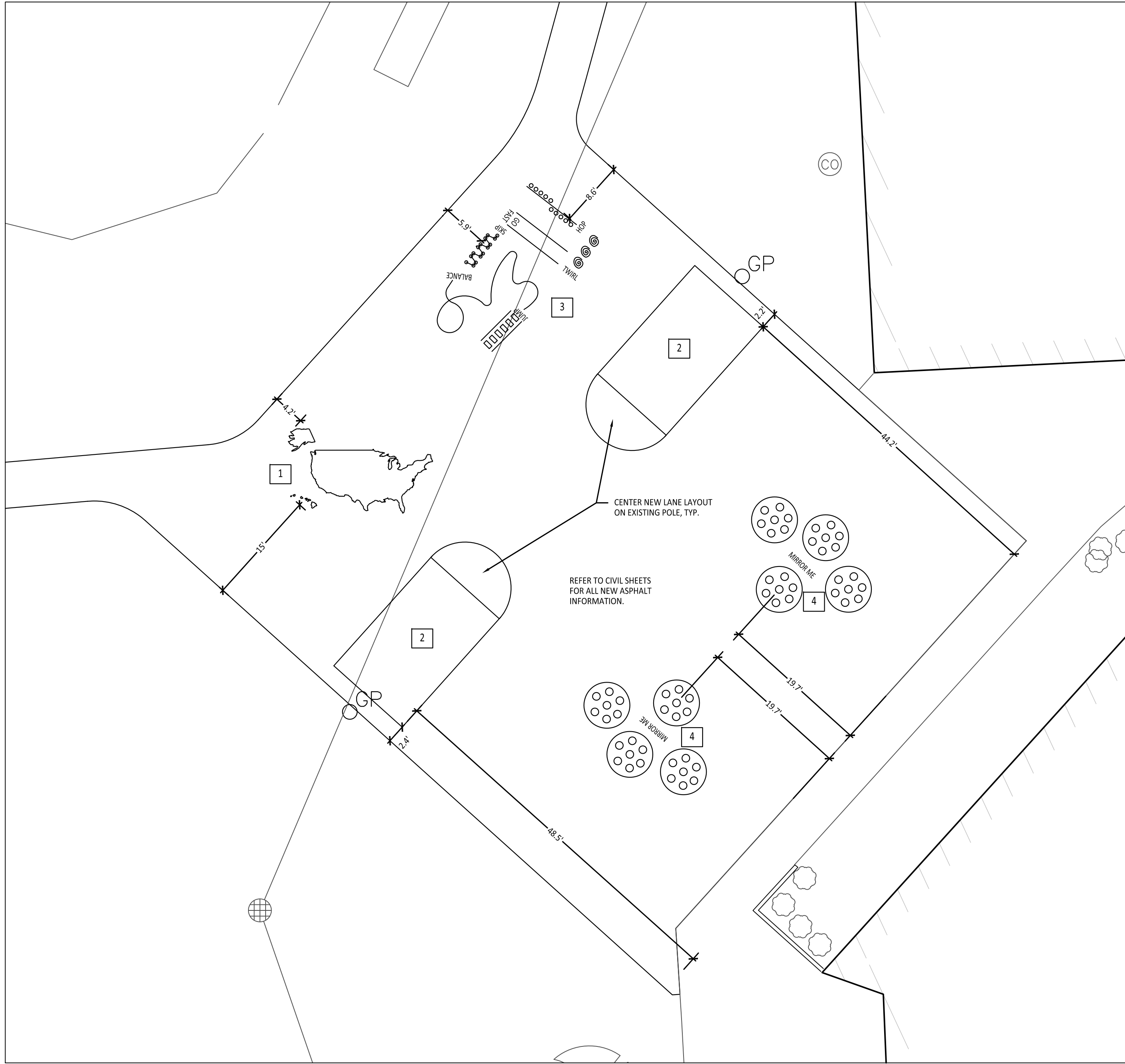
Refer to Drawing Nos. C2.1 & C2.2 (reissued):

- A. Install communication board as indicated on Drawing C2.1.
- B. Install communication board as indicated on Drawing C2.2.

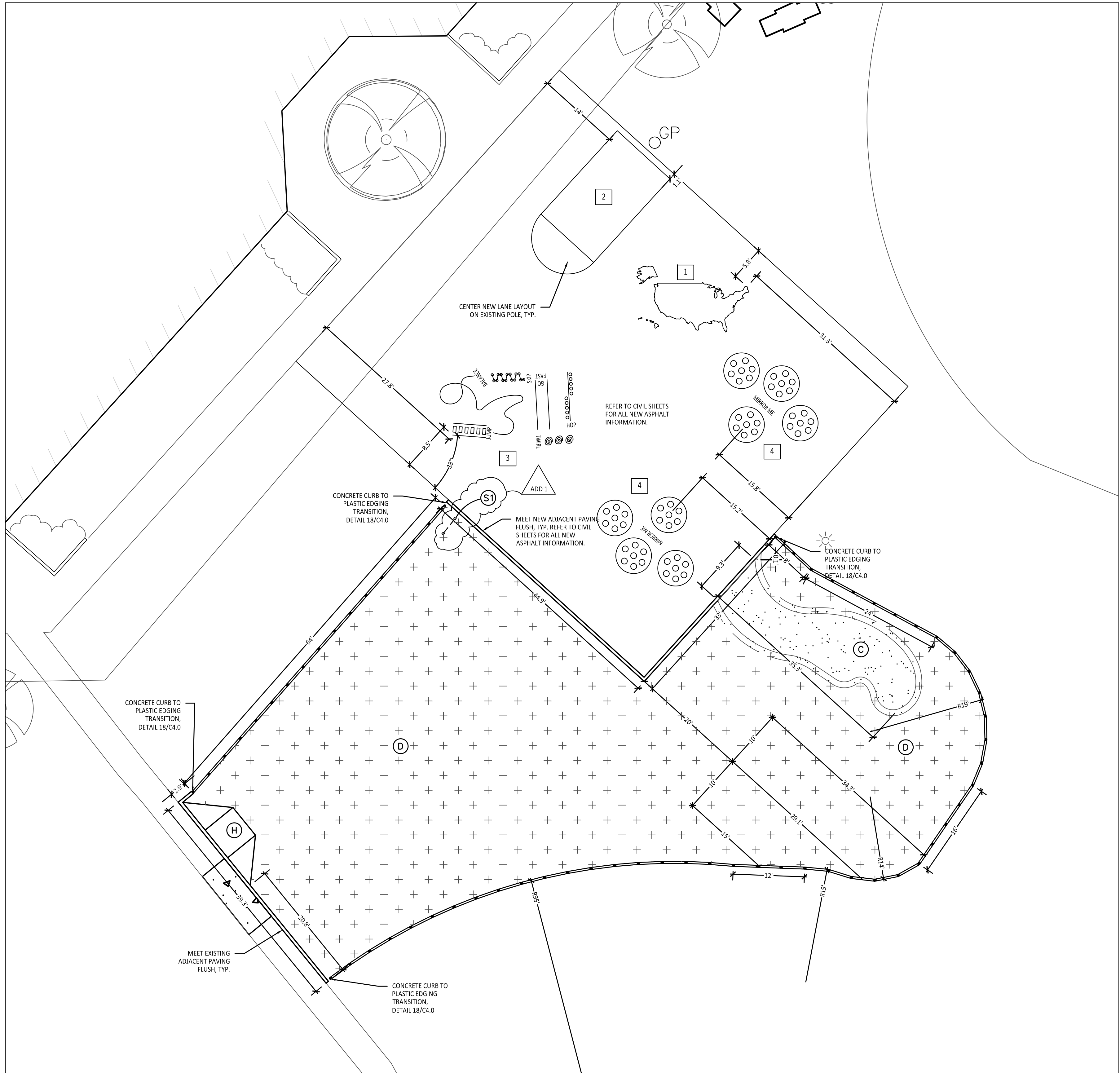
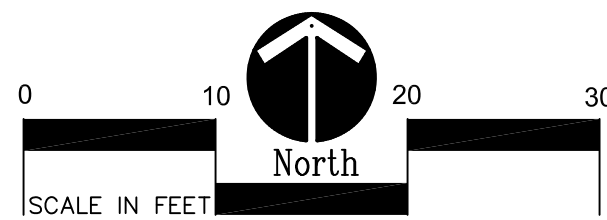
END OF ADDENDUM NO. 1 - BID PACKAGE NO. 01A



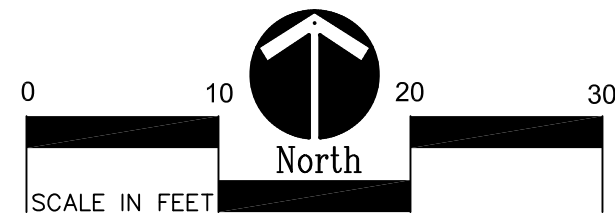
C2.1



1 Playground Layout Enlargement Plan - 3rd - 5th Grade
Scale: 1" = 10'-0"



2 Playground Layout Enlargement Plan - 1st - 2nd Grade
Scale: 1" = 10'-0"



1ST - 2ND GRADE PAINTED GAMES SCHEDULE:

SYMBOL	DESCRIPTION	DETAIL
1	MAP OF UNITED STATES	SEE SPECS, 3 / C2.1
2	BASKETBALL LANE LAYOUT	2 / C2.0
3	SILLY TRACK	3 / C2.0
4	MIRROR ME	2 / C2.1
5	N/A	

3RD - 5TH GRADE PAINTED GAMES SCHEDULE:

SYMBOL	DESCRIPTION	DETAIL
1	MAP OF UNITED STATES	SEE SPECS, 3 / C2.1
2	BASKETBALL LANE LAYOUT	2 / C2.0
3	SILLY TRACK	3 / C2.0
4	MIRROR ME	2 / C2.1
5	N/A	

PROPOSED FEATURES LEGEND:

SYMBOL	DESCRIPTION	KEY	DESCRIPTION	DETAIL
	RESILIENT SURFACING (BY OTHERS)	A	STRAIGHT FACE CONCRETE CURB	6 / C4.0
	LOOSE FILL SAFETY SURFACING (BY OTHERS)	B	THICKENED EDGE CONCRETE	11 / C4.0
	SYNTHETIC TURF (BY OTHERS)	C	RESILIENT SURFACING (BY OTHERS)	7 / C4.0
	N/A	D	LOOSE FILL SAFETY SURFACING (BY OTHERS)	3 & 9 / C4.0
	N/A	E	PLASTIC PLAY EDGING (BY OTHERS)	12, 13, & 18 / C4.0
	N/A	F	SYNTHETIC TURF (BY OTHERS)	4, 5, & 8 / C4.0
	N/A	G	CONCRETE WALK	2 / C4.0
	N/A	H	PLAY AREA ENTRANCE RAMP	16 / C4.0
	N/A	J	CONCRETE SAND BOX	15 / C4.0
	N/A	K	BASKETBALL HOOP POLE (BY OTHERS)	17 / C4.0
	N/A	L	N/A	
	N/A	M	N/A	
	N/A	N	N/A	
	N/A	P	N/A	
	PLASTIC PLAY EDGING, BY OTHERS REFER TO PLAYGROUND CONTRACTOR'S DRAWINGS AND SPECS			
	STRAIGHT FACE CONCRETE CURB			
	THICKENED EDGE CONCRETE			
	INTEGRAL WALK AND CURB			
	BARRIER-FREE PLAY AREA ENTRANCE RAMP			
	CHAIN LINK FENCE			
	LIMIT OF WORK			
	ENLARGEMENT LIMIT LINE			
		SIGNS		
		(S)	COMMUNICATION BOARD	10 / C4.0

LAYOUT NOTES:

- SURVEY OF EXISTING CONDITIONS PROVIDED BY PEA GROUP, 1849 POND RUN, AUBURN HILLS, MICHIGAN 48326, (248)689-9090.
- PAVEMENT DIMENSIONS AND RADII ARE TO EDGE OF PAVEMENT OR BACK OF CURB.
- DISCREPANCIES BETWEEN SITE AND PLANS SHOULD BE REPORTED TO THE PROJECT MANAGER IMMEDIATELY.
- VERIFY LOCATIONS OF ALL BELOW GRADE UTILITIES PRIOR TO BEGINNING WORK. 72 HOURS BEFORE YOU DIG CALL "MISS DIG" AT 1-800-482-7171.
- PROVIDE BARRIER FREE PARKING SIGNS FOR ALL BARRIER FREE PARKING SPACES. ALL SIGNS TO COMPLY WITH THE MDT MICHIGAN MANUAL OF UNIFORM TRAFFIC CONTROL DEVICES.
- SITE LAYOUT POINTS SHOULD BE ESTABLISHED AND PROTECTED FOR FUTURE SITE WORK.

BARRIER-FREE NOTES

BARRIER-FREE PARKING AND ACCESSIBLE ROUTE(S) MUST COMPLY WITH THE AMERICANS WITH DISABILITIES ACT AND MICHIGAN BARRIER-FREE CODE REQUIREMENTS, INCLUDING BUT NOT LIMITED TO THE FOLLOWING:

- 1:50 (2%) MAXIMUM CROSS-SLOPE ON ACCESSIBLE ROUTE.
- NO CHANGES IN LEVEL GREATER THAN 1/2" ALONG ACCESSIBLE ROUTE.
- 1:20 (5%) MAXIMUM LONGITUDINAL SLOPE ON ACCESSIBLE ROUTE (EXCEPT WHERE RAMPS ARE PROVIDED).
- 1:50 (2%) MAXIMUM SLOPE (IN ANY DIRECTION) IN B.F. PARKING AND ACCESS AISLES.

NOTE: VERIFY LOCATION OF NEW PLAYGROUND EQUIPMENT PRIOR TO INSTALLATION OF ANY CONCRETE CURB. CONCRETE CURB TO BE INSTALLED OUTSIDE OF FALL SAFETY ZONE OF EACH PIECE OF EQUIPMENT PER ASTM 1487-05 AND MANUFACTURER'S WRITTEN RECOMMENDATIONS.

NOTE: PLAYGROUND EQUIPMENT AND SURFACING PURCHASE AND INSTALLATION IS UNDER SEPARATE CONTRACT AND IS NOT INCLUDED IN THIS BID PACKAGE. CONTRACTOR IS REQUIRED TO COORDINATE INSTALLATION OF PLAYGROUND EQUIPMENT AND SURFACING WITH PLAYGROUND INSTALLER PRIOR TO ANY EXCAVATION AND CONCRETE CURBING OR PAVING INSTALLATION.



TMP ARCHITECTURE INC
1191 WEST SQUARE LAKE ROAD
BLOOMFIELD HILLS MICHIGAN 48302
PH 248.338.4561 FX 248.338.0223
EM INFO TMP-ARCHITECTURE.COM

REGISTRATION SEAL

CONSULTANT



141 E. Michigan Avenue, Suite 500
Kalamazoo Michigan 49007
Phone (269) 381-3357
Fax (269) 381-2944

PROJECT TITLE

**Bemis
Elementary School
Playground Renovation
Bld Package No.01A**

**Troy School District
Troy, Michigan**

**DRAWING TITLE
Playground Layout
Enlargement Plans**

ISSUE DATES

11-29-23	ADDENDUM #1
11-09-23	CONSTRUCTION DOCUMENTS

DATE ISSUED FOR:

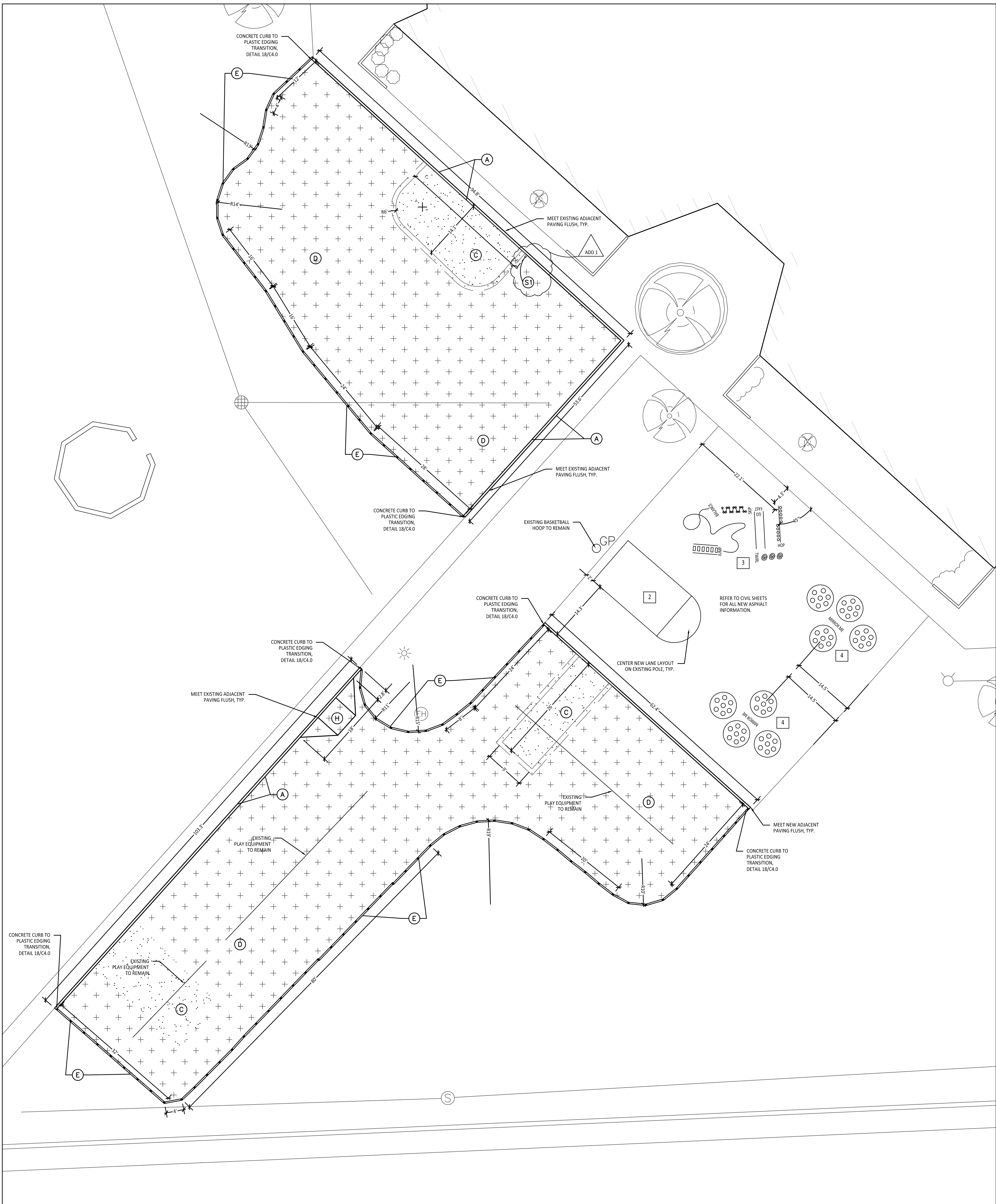
DRAWN	...
CHECKED	...
APPROVED	...

PROJECT NO.

22087B

DRAWING NO.

C2.2



BARRIER-FREE NOTES

BARRIER-FREE PARKING AND ACCESSIBLE ROUTE(S) MUST COMPLY WITH THE AMERICANS WITH DISABILITIES ACT AND MICHIGAN BARRIER-FREE CODE REQUIREMENTS, INCLUDING BUT NOT LIMITED TO THE FOLLOWING:
- 1:50 (2%) MAXIMUM CROSS-SLOPE ON ACCESSIBLE ROUTE.
- NO CHANGES IN LEVEL GREATER THAN 1/2" ALONG ACCESSIBLE ROUTE.
- 1:20 (5%) MAXIMUM LONGITUDINAL SLOPE ON ACCESSIBLE ROUTE (EXCEPT WHERE RAMPS ARE PROVIDED).
- 1:50 (2%) MAXIMUM SLOPE (IN ANY DIRECTION) IN B.F. PARKING AND ACCESS AISLES.

NOTE: VERIFY LOCATION OF NEW PLAYGROUND EQUIPMENT PRIOR TO INSTALLATION OF ANY CONCRETE CURB. CONCRETE CURB TO BE INSTALLED OUTSIDE OF FALL SAFETY ZONE OF EACH PIECE OF EQUIPMENT PER ASTM 1487-05 AND MANUFACTURER'S WRITTEN RECOMMENDATIONS.

NOTE: PLAYGROUND EQUIPMENT AND SURFACING PURCHASE AND INSTALLATION IS UNDER SEPARATE CONTRACT AND IS NOT INCLUDED IN THIS BID PACKAGE. CONTRACTOR IS REQUIRED TO COORDINATE INSTALLATION OF PLAYGROUND EQUIPMENT AND SURFACING WITH PLAYGROUND INSTALLER PRIOR TO ANY EXCAVATION AND CONCRETE CURBING OR PAVING INSTALLATION.

LAYOUT NOTES:

1. SURVEY OF EXISTING CONDITIONS PROVIDED BY PEA GROUP, 1849 POND RUN, AUBURN HILLS, MICHIGAN 48326, (248)689-9090.
2. PAVEMENT DIMENSIONS AND RADII ARE TO EDGE OF PAVEMENT OR BACK OF CURB.
3. DISCREPANCIES BETWEEN SITE AND PLANS SHOULD BE REPORTED TO THE PROJECT MANAGER IMMEDIATELY.
4. VERIFY LOCATIONS OF ALL BELOW GRADE UTILITIES PRIOR TO BEGINNING WORK. 72 HOURS BEFORE YOU DIG CALL "MISS DIG" AT 1-800-482-7171.
5. PROVIDE BARRIER FREE PARKING SIGNS FOR ALL BARRIER FREE PARKING SPACES. ALL SIGNS TO COMPLY WITH THE MICHIGAN MANUAL OF UNIFORM TRAFFIC CONTROL DEVICES.
6. SITE LAYOUT POINTS SHOULD BE ESTABLISHED AND PROTECTED FOR FUTURE SITE WORK.

PROPOSED FEATURES LEGEND:

SYMBOL	DESCRIPTION	KEY	DESCRIPTION	DETAIL
	RESILIENT SURFACING (BY OTHERS)	A	STRAIGHT FACE CONCRETE CURB	6 / C4.0
	LOOSE FILL SAFETY SURFACING (BY OTHERS)	B	THICKENED EDGE CONCRETE	11 / C4.0
	SYNTHETIC TURF (BY OTHERS)	C	RESILIENT SURFACING (BY OTHERS)	7 / C4.0
	N/A	D	LOOSE FILL SAFETY SURFACING (BY OTHERS)	3 & 9 / C4.0
	N/A	E	PLASTIC PLAY EDGING (BY OTHERS)	12, 13, & 18 / C4.0
	PLASTIC PLAY EDGING, BY OTHERS REFER TO PLAYGROUND CONTRACTOR'S DRAWINGS AND SPECS	F	SYNTHETIC TURF (BY OTHERS)	4, 5, & 8 / C4.0
	STRAIGHT FACE CONCRETE CURB	G	CONCRETE WALK	2 / C4.0
	THICKENED EDGE CONCRETE	H	PLAY AREA ENTRANCE RAMP	16 / C4.0
	INTEGRAL WALK AND CURB	I	CONCRETE SAND BOX	15 / C4.0
	BARRIER-FREE PLAY AREA ENTRANCE RAMP	J	BASKETBALL HOOP POLE (BY OTHERS)	17 / C4.0
	CHAIN LINK FENCE	K	N/A	
	LIMIT OF WORK	L	N/A	
	ENLARGEMENT LIMIT LINE	M	N/A	
		N	N/A	
		P	N/A	

SIGNS

	COMMUNICATION BOARD	10 / C4.0
--	---------------------	-----------

SWING AREA
PAINTED GAMES SCHEDULE:

SYMBOL	DESCRIPTION	DETAIL
1	N/A	
2	BASKETBALL LANE LAYOUT	2 / C2.0
3	SILLY TRACK	3 / C2.0
4	MIRROR ME	2 / C2.1
5	N/A	



TMP ARCHITECTURE INC
1191 WEST SQUARE LAKE ROAD
BLOOMFIELD HILLS MICHIGAN 48302
PH 248.338.4561 FX 248.338.0223
EM INFO TMP-ARCHITECTURE.COM

REGISTRATION SEAL

CONSULTANT



141 E. Michigan Avenue, Suite 500
Kalamazoo Michigan 49007
Phone (269) 381-3357
Fax (269) 381-2044

PROJECT TITLE

**Bemis
Elementary School
Playground Renovation
Bld Package No.01A**

**Troy School District
Troy, Michigan**

**DRAWING TITLE
Playground Layout
Enlargement Plans**

ISSUE DATES

11-09-23	11-09-23
11-09-23	11-09-23
11-09-23	11-09-23
11-09-23	11-09-23
11-09-23	11-09-23
11-09-23	11-09-23
11-09-23	11-09-23
11-09-23	11-09-23
11-09-23	11-09-23
11-09-23	11-09-23

11-29-23 ADDENDUM #1

11-09-23 CONSTRUCTION DOCUMENTS

DATE ISSUED FOR:

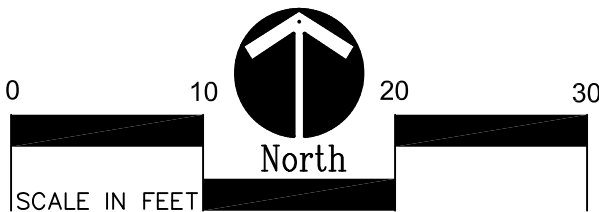
DRAWN ...
CHECKED ...
APPROVED ...

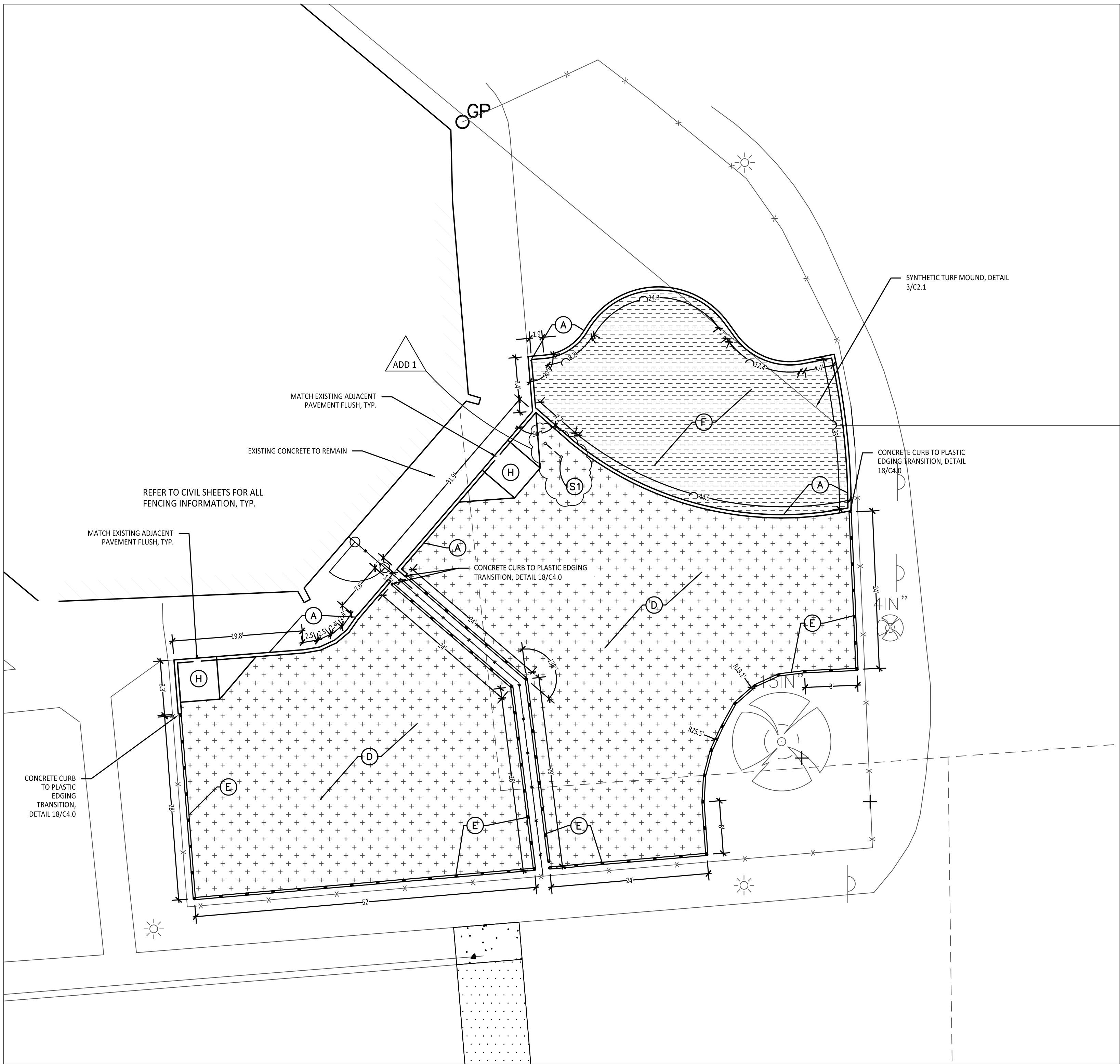
PROJECT NO.

22087B

DRAWING NO.

C2.3





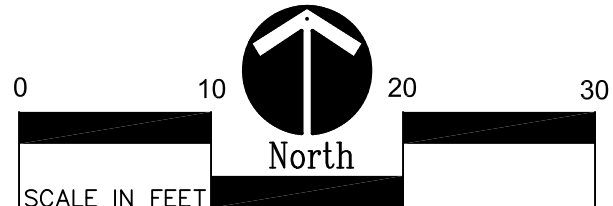
SYMBOL	DESCRIPTION	KEY	DESCRIPTION	DETAIL
	RESILIENT SURFACING (BY OTHERS)	(A)	STRAIGHT FACE CONCRETE CURB	6 /C4.0
	LOOSE FILL SAFETY SURFACING (BY OTHERS)	(B)	THICKENED EDGE CONCRETE	11 /C4.0
	SYNTHETIC TURF (BY OTHERS)	(C)	RESILIENT SURFACING (BY OTHERS)	7 /C4.0
	BITUMINOUS SEALCOATING	(D)	LOOSE FILL SAFETY SURFACING (BY OTHERS)	3 & 9 /C4.0
	PLAY SAND	(E)	PLASTIC PLAY EDGING (BY OTHERS)	12, 13, & 18 /C4.0
	PLASTIC PLAY EDGING, BY OTHERS REFER TO PLAYGROUND CONTRACTOR'S DRAWINGS AND SPECS	(F)	SYNTHETIC TURF (BY OTHERS)	4, 5, & 8 /C4.0
	STRAIGHT FACE CONCRETE CURB	(G)	CONCRETE WALK	2 /C4.0
	THICKENED EDGE CONCRETE	(H)	PLAY AREA ENTRANCE RAMP	16 /C4.0
	INTEGRAL WALK AND CURB	(J)	CONCRETE SAND BOX	15 /C4.0
	BARRIER-FREE PLAY AREA ENTRANCE RAMP	(K)	BASKETBALL HOOP POLE (BY OTHERS)	17 /C4.0
	CHAIN LINK FENCE	(L)	N/A	
	LIMIT OF WORK	(M)	N/A	
	ENLARGEMENT LIMIT LINE	(N)	BITUMINOUS SEALCOATING	SEE SPECS
		(P)	N/A	

- LAYOUT NOTES:**
- EXISTING CONDITIONS SURVEY PROVIDED BY PEA GROUP, 1849 POND RUN, AUBURN HILLS, MICHIGAN, 48326, (248)689-9090.
 - PROTECT ALL TREES AND EXISTING FEATURES TO REMAIN AS SPECIFIED.
 - PAVEMENT DIMENSIONS AND RADII ARE TO EDGE OF PAVEMENT OR BACK OF CURB. PLASTIC EDGING DIMENSIONS AND RADII ARE TO CENTER OF EDGE SEGMENT.
 - ALL NEW PAVEMENTS AND WALKS TO MEET 2010 ADA STANDARDS FOR ACCESSIBLE DESIGN.
 - ALL EXISTING PLAYGROUND EQUIPMENT TO BE REMOVED **MUST BE DESTROYED COMPLETELY** SO THAT IT CANNOT BE RE-ASSEMBLED. THE CONTRACTOR IS NOT ALLOWED TO RE-USE, DONATE, OR SELL ANY EXISTING PLAYGROUND EQUIPMENT SCHEDULED TO BE DEMOLISHED.
 - THE PURCHASE AND INSTALLATION OF ALL PLAYGROUND EQUIPMENT, PLAY SAFETY SURFACING, AND PLAY SAFETY SURFACING EDGING IN UNDER A SEPARATE CONTRACT AND IS NOT INCLUDED IN THIS BID PACKAGE. SITE CONTRACTORS ARE REQUIRED TO COORDINATE INSTALLATION OF PLAYGROUND EQUIPMENT, PLAY SAFETY SURFACING, AND PLAY SAFETY SURFACING EDGING WITH PLAYGROUND CONTRACTOR PRIOR TO ANY EXCAVATION OR PAVING INSTALLATION.

**1st-5th Grade Area
PAINTED GAMES SCHEDULE:**

SYMBOL	DESCRIPTION	DETAIL
1	MAP OF UNITED STATES	3 /C4.0
2	N/A	
3	SILLY TRACK	6 /C4.0
4	MIRROR ME	2 /C4.0
5	TRIKE TRACK	5 /C4.0

1 Playground Layout Enlargement Plan - PreK/Kindergarten
1" = 10'-0"



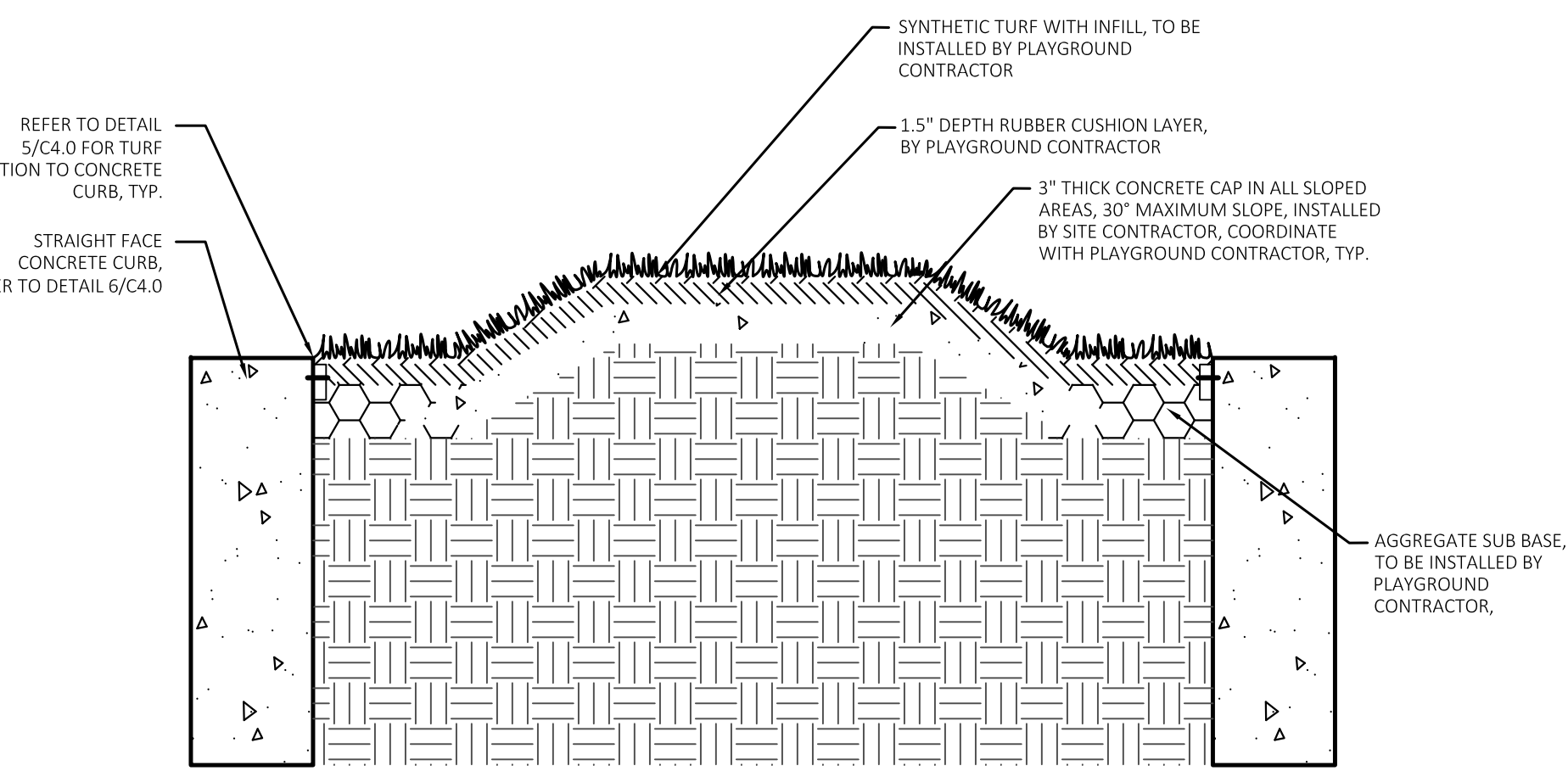
BARRIER-FREE NOTES

BARRIER-FREE PARKING AND ACCESSIBLE ROUTE(S) MUST COMPLY WITH THE AMERICANS WITH DISABILITIES ACT AND MICHIGAN BARRIER-FREE CODE REQUIREMENTS, INCLUDING BUT NOT LIMITED TO THE FOLLOWING:

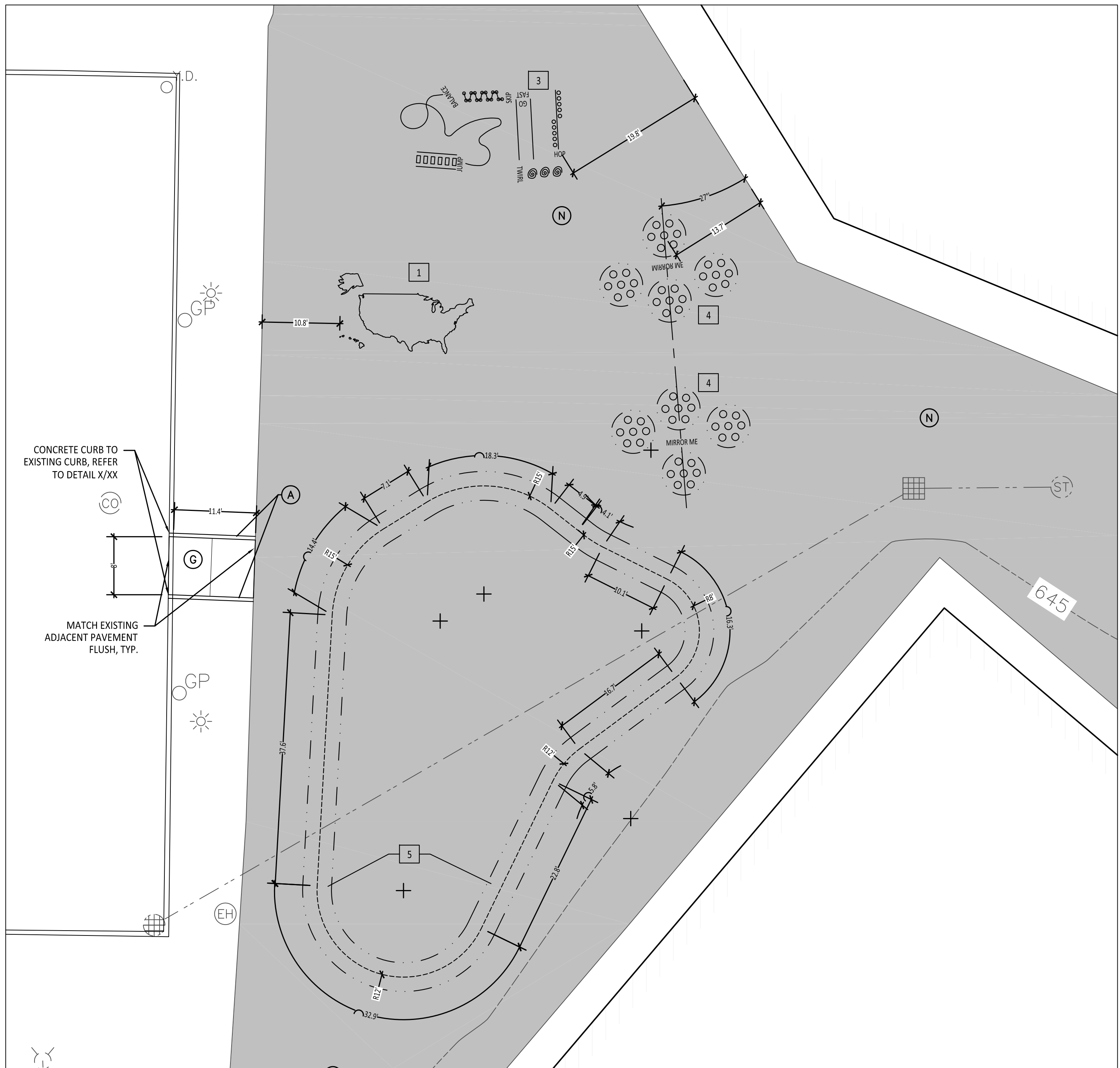
- 1:50 (2%) MAXIMUM CROSS-SLOPE ON ACCESSIBLE ROUTE.
- NO CHANGES IN LEVEL GREATER THAN 1/2" ALONG ACCESSIBLE ROUTE.
- 1:20 (5%) MAXIMUM LONGITUDINAL SLOPE ON ACCESSIBLE ROUTE (EXCEPT WHERE RAMPS ARE PROVIDED).
- 1:50 (2%) MAXIMUM SLOPE (IN ANY DIRECTION) IN B.F. PARKING AND ACCESS AISLES.

NOTE: VERIFY LOCATION OF NEW PLAYGROUND EQUIPMENT PRIOR TO INSTALLATION OF ANY CONCRETE CURB. CONCRETE CURB TO BE INSTALLED OUTSIDE OF FALL SAFETY ZONE OF EACH PIECE OF EQUIPMENT PER ASTM 1487-05 AND MANUFACTURER'S WRITTEN RECOMMENDATIONS.

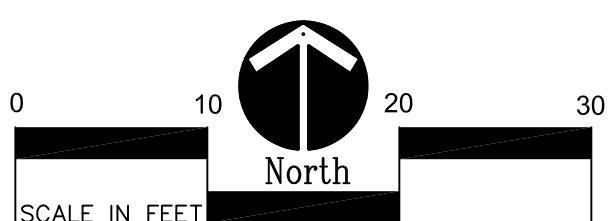
NOTE: PLAYGROUND EQUIPMENT AND SURFACING PURCHASE AND INSTALLATION IS UNDER SEPARATE CONTRACT AND IS NOT INCLUDED IN THIS BID PACKAGE. CONTRACTOR IS REQUIRED TO COORDINATE INSTALLATION OF PLAYGROUND EQUIPMENT AND SURFACING WITH PLAYGROUND INSTALLER PRIOR TO ANY EXCAVATION AND CONCRETE CURBING OR PAVING INSTALLATION.



3 Synthetic Turf Mound Detail
Not to Scale



2 Playground Layout Enlargement Plan - Western Paved Play Area
1" = 10'-0"



T M P A R C H I T E C T U R E I N C
1191 WEST SQUARE LAKE ROAD
BLOOMFIELD HILLS MICHIGAN 48302
PH 248.338.4561 FX 248.338.0223
EM INFO TMP-ARCHITECTURE.COM

REGISTRATION SEAL

CONSULTANT



141 E. Michigan Avenue, Suite 500
Kalamazoo Michigan 49007
Phone (269) 381-3357
Fax (269) 381-2944

PROJECT TITLE
**Hill Elementary School
Playground Renovation
Bld Package No.01A**

**Troy School District
Troy, Michigan**

DRAWING TITLE
**Playground Layout
Enlargement Plans
Pre-K, Kindergarten
& Western Paved
Play Area**

ISSUE DATES

11-09-23	ADDENDUM #1
11-09-23	CONSTRUCTION DOCUMENTS

DATE: ISSUED FOR:

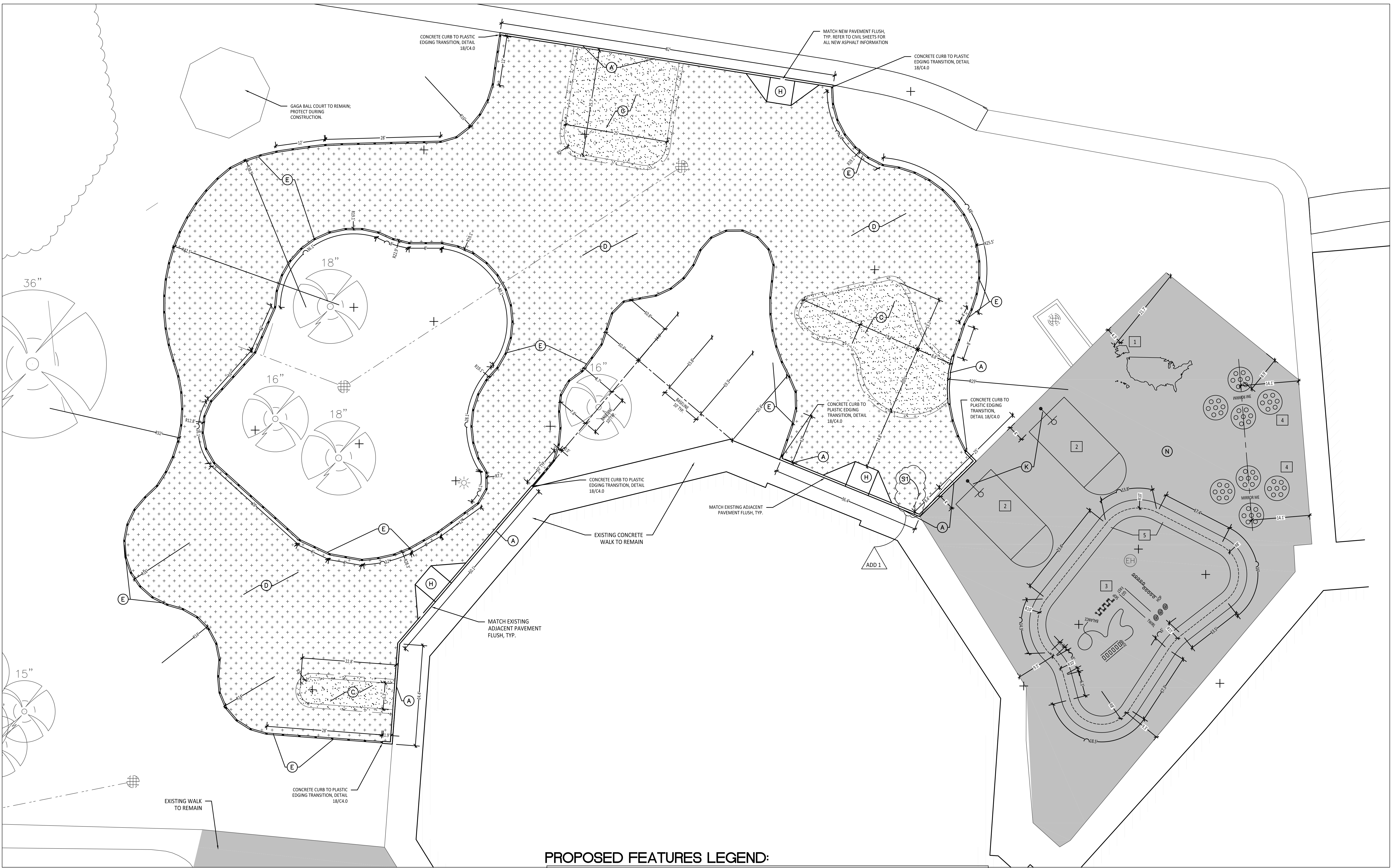
DRAWN	...
CHECKED	...
APPROVED	...

PROJECT NO.

22090B

DRAWING NO.

C2.1



1

Playground Layout Enlargement Plan - 1st - 5th Grade

1" = 10'-0"

0102030

SCALE IN FEET

North

BARRIER-FREE NOTES

BARRIER-FREE PARKING AND ACCESSIBLE ROUTE(S) MUST COMPLY WITH THE AMERICANS WITH DISABILITIES ACT AND MICHIGAN BARRIER-FREE CODE REQUIREMENTS, INCLUDING BUT NOT LIMITED TO THE FOLLOWING:

- 1:50 (2%) MAXIMUM CROSS-SLOPE ON ACCESSIBLE ROUTE.
- NO CHANGES IN LEVEL GREATER THAN 1/2" ALONG ACCESSIBLE ROUTE.
- 1:20 (5%) MAXIMUM LONGITUDINAL SLOPE ON ACCESSIBLE ROUTE (EXCEPT WHERE RAMPS ARE PROVIDED).
- 1:50 (2%) MAXIMUM SLOPE (IN ANY DIRECTION) IN B.F. PARKING AND ACCESS AISLES.

PROPOSED FEATURES LEGEND:

SYMBOL	DESCRIPTION	KEY	DESCRIPTION	DETAIL
	RESILIENT SURFACING (BY OTHERS)	(A)	STRAIGHT FACE CONCRETE CURB	6 / C4.0
	THICKENED EDGE CONCRETE	(B)	THICKENED EDGE CONCRETE	11 / C4.0
	RESILIENT SURFACING (BY OTHERS)	(C)	RESILIENT SURFACING (BY OTHERS)	7 / C4.0
	LOOSE FILL SAFETY SURFACING (BY OTHERS)	(D)	LOOSE FILL SAFETY SURFACING (BY OTHERS)	3 & 9 / C4.0
	PLASTIC PLAY EDGING (BY OTHERS)	(E)	PLASTIC PLAY EDGING (BY OTHERS)	12, 13, & 18 / C4.0
	SYNTHETIC TURF (BY OTHERS)	(F)	SYNTHETIC TURF (BY OTHERS)	4, 5, & 8 / C4.0
	CONCRETE WALK	(G)	CONCRETE WALK	2 / C4.0
	PLAY AREA ENTRANCE RAMP	(H)	PLAY AREA ENTRANCE RAMP	16 / C4.0
	CONCRETE SAND BOX	(J)	CONCRETE SAND BOX	15 / C4.0
	BASKETBALL HOOP POLE (BY OTHERS)	(K)	BASKETBALL HOOP POLE (BY OTHERS)	17 / C4.0
	N/A	(L)	N/A	
	N/A	(M)	N/A	
	BITUMINOUS SEALCOATING	(N)	BITUMINOUS SEALCOATING	SEE SPECS
	N/A	(P)	N/A	
	PLASTIC PLAY EDGING, BY OTHERS REFER TO PLAYGROUND CONTRACTOR'S DRAWINGS AND SPECS			
	STRAIGHT FACE CONCRETE CURB			
	THICKENED EDGE CONCRETE			
	INTEGRAL WALK AND CURB			
	BARRIER-FREE PLAY AREA ENTRANCE RAMP			
	CHAIN LINK FENCE			
	LIMIT OF WORK			
	ENLARGEMENT LIMIT LINE			
	SIGNS			
	COMMUNICATION BOARD			10 / C4.0

1st-5th Grade Area
PAINTED GAMES SCHEDULE:

SYMBOL	DESCRIPTION	DETAIL
	MAP OF UNITED STATES	3 / C4.0
	BASKETBALL LANE	4 / C4.0
	SILLY TRACK	6 / C4.0
	MIRROR ME	2 / C4.0
	TRIKE TRACK	5 / C4.0

LAYOUT NOTES:

- EXISTING CONDITIONS SURVEY PROVIDED BY PEA GROUP, 1849 POND RUN, AUBURN HILLS, MICHIGAN, 48326, (248)689-9090.
- PROTECT ALL TREES AND EXISTING FEATURES TO REMAIN AS SPECIFIED.
- PAVEMENT DIMENSIONS AND RADII ARE TO EDGE OF PAVEMENT OR BACK OF CURB. PLASTIC EDGING DIMENSIONS AND RADII ARE TO CENTER OF EDGE SEGMENT.
- ALL NEW PAVEMENTS AND WALKS TO MEET 2010 ADA STANDARDS FOR ACCESSIBLE DESIGN.
- ALL EXISTING PLAYGROUND EQUIPMENT TO BE REMOVED **MUST BE DESTROYED COMPLETELY** SO THAT IT CANNOT BE RE-ASSEMBLED. THE CONTRACTOR IS NOT ALLOWED TO RE-USE, DONATE, OR SELL ANY EXISTING PLAYGROUND EQUIPMENT SCHEDULED TO BE DEMOLISHED.
- THE PURCHASE AND INSTALLATION OF ALL PLAYGROUND EQUIPMENT, PLAY SAFETY SURFACING, AND PLAY SAFETY SURFACING EDGING IN UNDER A SEPARATE CONTRACT AND IS NOT INCLUDED IN THIS BID PACKAGE. SITE CONTRACTORS ARE REQUIRED TO COORDINATE INSTALLATION OF PLAYGROUND EQUIPMENT, PLAY SAFETY SURFACING, AND PLAY SAFETY SURFACING EDGING WITH PLAYGROUND CONTRACTOR PRIOR TO ANY EXCAVATION OR PAVING INSTALLATION.



TMP ARCHITECTURE INC
1191 WEST SQUARE LAKE ROAD
BLOOMFIELD HILLS MICHIGAN 48302
PH 248.338.4561 FX 248.338.0223
EM INFO TMP-ARCHITECTURE.COM

REGISTRATION SEAL

CONSULTANT



141 E. Michigan Avenue, Suite 500
Kalamazoo Michigan 49007
Phone (269) 381-3357
Fax (269) 381-2944

PROJECT TITLE

**Hill
Elementary School
Playground Renovation
Bld Package No.01A**

**Troy School District
Troy, Michigan**

DRAWING TITLE

**Playground Layout
Enlargement Plan
1st-5th Grades**

ISSUE DATES

11-29-23	ADDENDUM #1
11-09-23	CONSTRUCTION DOCUMENTS

DATE: ISSUED FOR:

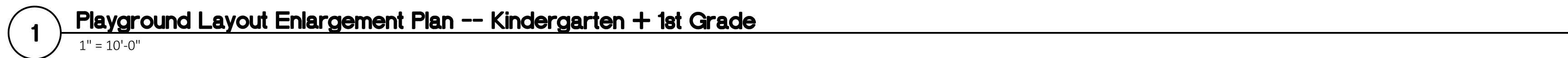
DRAWN	...
CHECKED	...
APPROVED	...

PROJECT NO.

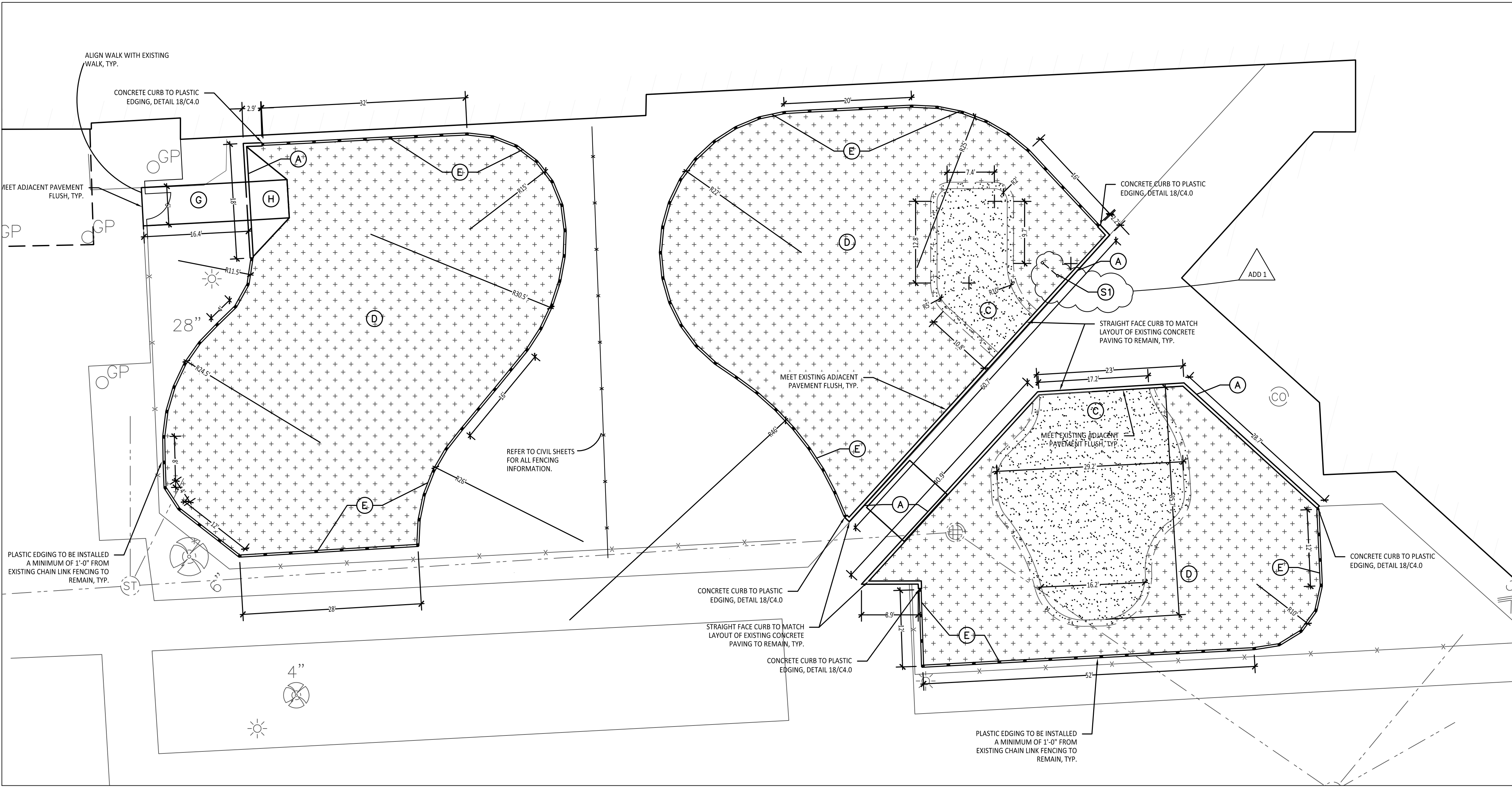
22090B

DRAWING NO.

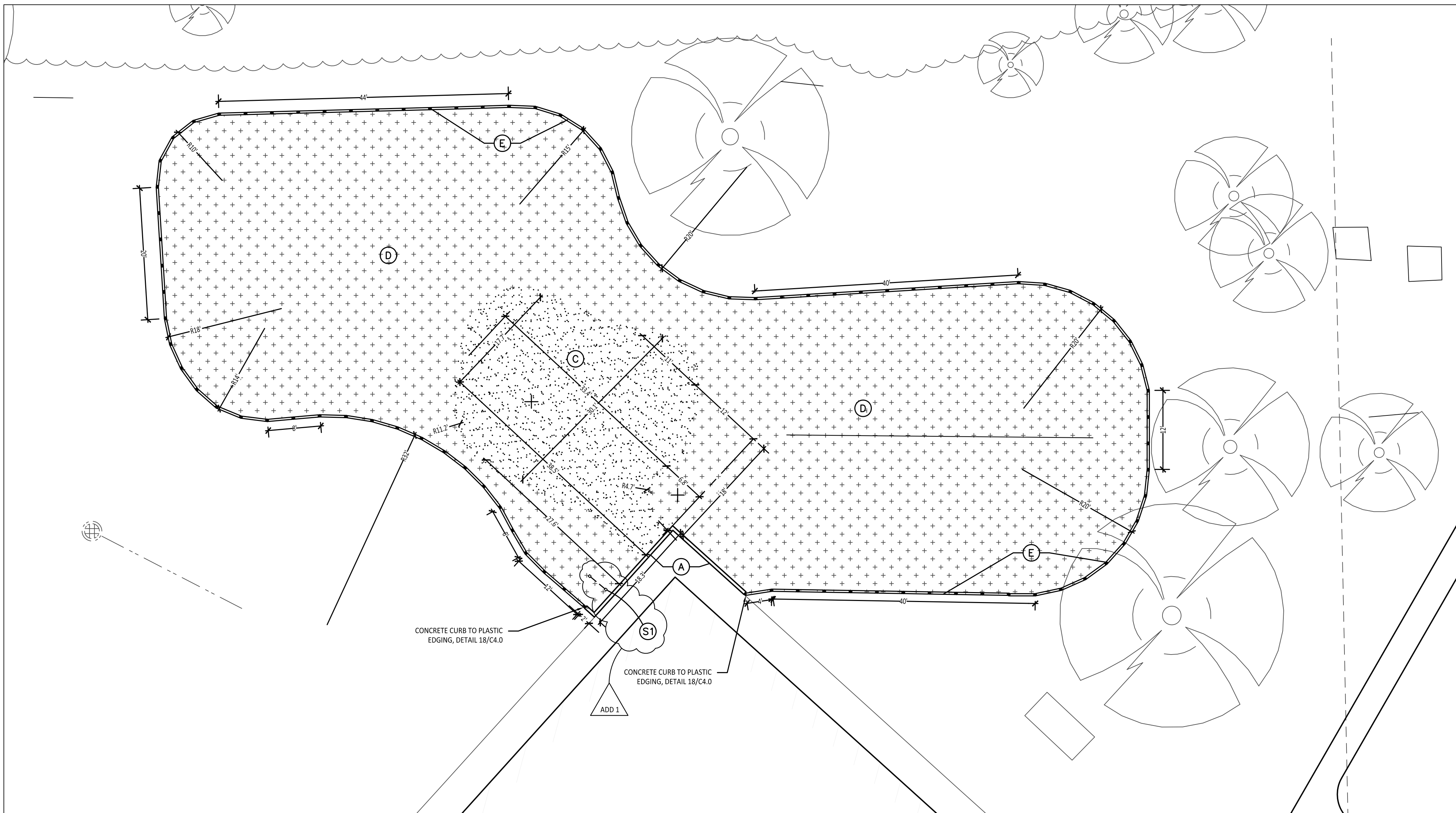
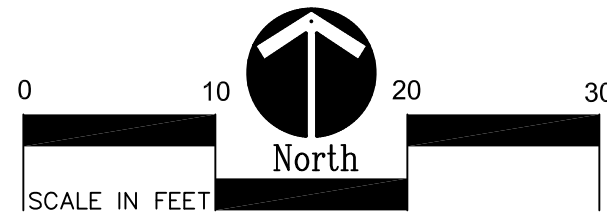
C2.2



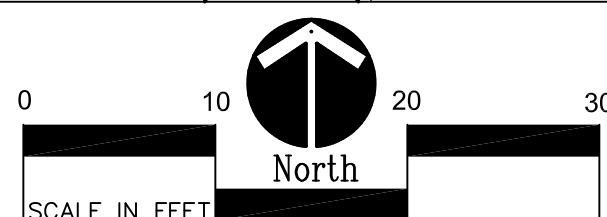
4 Silly Track Layout



1 Playground Layout Enlargement Plan - PreK/Kindergarten
Scale: 1"=10'-0"



2 Playground Layout Enlargement Plan - Upper Elementary
Scale: 1"=10'-0"



PROPOSED FEATURES LEGEND:

SYMBOL	DESCRIPTION	KEY	DESCRIPTION	DETAIL
	RESILIENT SURFACING (BY OTHERS)	A	STRAIGHT FACE CONCRETE CURB	6 /C4.0
	THICKENED EDGE CONCRETE	B	THICKENED EDGE CONCRETE	11 /C4.0
	RESILIENT SURFACING (BY OTHERS)	C	RESILIENT SURFACING (BY OTHERS)	7 /C4.0
	LOOSE FILL SAFETY SURFACING (BY OTHERS)	D	LOOSE FILL SAFETY SURFACING (BY OTHERS)	3 & 9 /C4.0
	PLASTIC PLAY EDGING (BY OTHERS)	E	PLASTIC PLAY EDGING (BY OTHERS)	12, 13, & 18 /C4.0
	CONCRETE WALK	F	CONCRETE WALK	2 /C4.0
	PLAY AREA ENTRANCE RAMP	G	PLAY AREA ENTRANCE RAMP	16 /C4.0
	BASKETBALL HOOP POLE (BY OTHERS)	H	BASKETBALL HOOP POLE (BY OTHERS)	15 /C4.0
	BITUMINOUS SEALCOATING	J	BITUMINOUS SEALCOATING	17 /C4.0
	BITUMINOUS SEALCOATING	K	BITUMINOUS SEALCOATING	SEE SPECS
	BITUMINOUS SEALCOATING	L	BITUMINOUS SEALCOATING	SEE SPECS
	BITUMINOUS SEALCOATING	M	BITUMINOUS SEALCOATING	SEE SPECS
	BITUMINOUS SEALCOATING	N	BITUMINOUS SEALCOATING	SEE SPECS
	BITUMINOUS SEALCOATING	P	BITUMINOUS SEALCOATING	SEE SPECS
	PLASTIC PLAY EDGING, BY OTHERS REFER TO PLAYGROUND CONTRACTOR'S DRAWINGS AND SPECS			
	STRAIGHT FACE CONCRETE CURB			
	THICKENED EDGE CONCRETE			
	INTEGRAL WALK AND CURB			
	BARrier-FREE PLAY AREA ENTRANCE RAMP			
	CHAIN LINK FENCE			
	LIMIT OF WORK			
	ENLARGEMENT LIMIT LINE			

NOTE: VERIFY LOCATION OF NEW PLAYGROUND EQUIPMENT PRIOR TO INSTALLATION OF ANY CONCRETE CURB. CONCRETE CURB TO BE INSTALLED OUTSIDE OF FALL SAFETY ZONE OF EACH PIECE OF EQUIPMENT PER ASTM 1487-05 AND MANUFACTURER'S WRITTEN RECOMMENDATIONS.

NOTE: PLAYGROUND EQUIPMENT AND SURFACING PURCHASE AND INSTALLATION IS UNDER SEPARATE CONTRACT AND IS NOT INCLUDED IN THIS BID PACKAGE. CONTRACTOR IS REQUIRED TO COORDINATE INSTALLATION OF PLAYGROUND EQUIPMENT AND SURFACING WITH PLAYGROUND INSTALLER PRIOR TO ANY EXCAVATION AND CONCRETE CURBING OR PAVING INSTALLATION.

LAYOUT NOTES:

- EXISTING CONDITIONS SURVEY PROVIDED BY PEA GROUP, 1849 POND RUN, AUBURN HILLS, MICHIGAN, 48326, (248)689-9090.
- PROTECT ALL TREES AND EXISTING FEATURES TO REMAIN AS SPECIFIED.
- PAVEMENT DIMENSIONS AND RADII ARE TO EDGE OF PAVEMENT OR BACK OF CURB. PLASTIC EDGING DIMENSIONS AND RADII ARE TO CENTER OF EDGE SEGMENT.
- ALL NEW PAVEMENTS AND WALKS TO MEET 2010 ADA STANDARDS FOR ACCESSIBLE DESIGN.
- ALL EXISTING PLAYGROUND EQUIPMENT TO BE REMOVED **MUST BE DESTROYED COMPLETELY** SO THAT IT CANNOT BE RE-ASSEMBLED. THE CONTRACTOR IS NOT ALLOWED TO RE-USE, DONATE, OR SELL ANY EXISTING PLAYGROUND EQUIPMENT SCHEDULED TO BE DEMOLISHED.
- THE PURCHASE AND INSTALLATION OF ALL PLAYGROUND EQUIPMENT, PLAY SAFETY SURFACING, AND PLAY SAFETY SURFACING EDGING IN UNDER A SEPARATE CONTRACT AND IS NOT INCLUDED IN THIS BID PACKAGE. SITE CONTRACTORS ARE REQUIRED TO COORDINATE INSTALLATION OF PLAYGROUND EQUIPMENT, PLAY SAFETY SURFACING, AND PLAY SAFETY SURFACING EDGING WITH PLAYGROUND CONTRACTOR PRIOR TO ANY EXCAVATION OR PAVING INSTALLATION.

BARRIER-FREE NOTES

BARRIER-FREE PARKING AND ACCESSIBLE ROUTES MUST COMPLY WITH THE AMERICANS WITH DISABILITIES ACT AND MICHIGAN BARRIER-FREE CODE REQUIREMENTS, INCLUDING BUT NOT LIMITED TO THE FOLLOWING:

- 1:50 (2%) MAXIMUM CROSS-SLOPE ON ACCESSIBLE ROUTE.
- NO CHANGES IN LEVEL GREATER THAN 1/2" ALONG ACCESSIBLE ROUTE.
- 1:20 (5%) MAXIMUM LONGITUDINAL SLOPE ON ACCESSIBLE ROUTE (EXCEPT WHERE RAMPS ARE PROVIDED).
- 1:50 (2%) MAXIMUM SLOPE (IN ANY DIRECTION) IN B.F. PARKING AND ACCESS AISLES.



TMP ARCHITECTURE INC
1191 WEST SQUARE LAKE ROAD
BLOOMFIELD HILLS MICHIGAN 48302
PH 248.338.4561 FX 248.338.0223
EM INFO TMP-ARCHITECTURE.COM

REGISTRATION SEAL

CONSULTANT



141 E. Michigan Avenue, Suite 500
Kalamazoo Michigan 49007
Phone (269) 381-3357
Fax (269) 381-2944

PROJECT TITLE

**Morse
Elementary School
Playground Renovation
Bld Package No.01A**

**Troy School District
Troy, Michigan**

**DRAWING TITLE
Playground Layout
Enlargement Plans**

ISSUE DATES

11-29-23	ADDENDUM #1
11-09-23	CONSTRUCTION DOCUMENTS

DATE: ISSUED FOR:

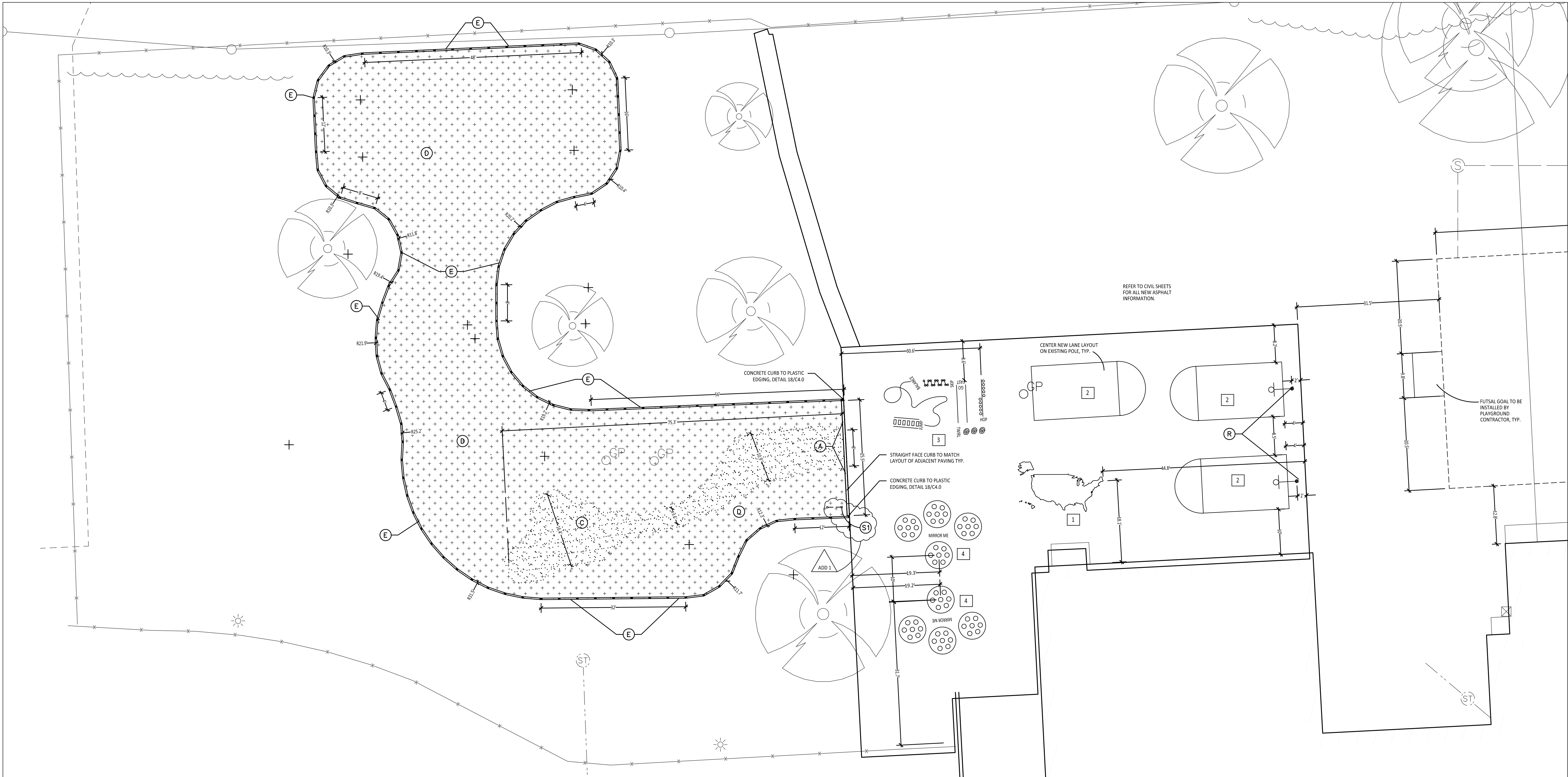
DRAWN	...
CHECKED	...
APPROVED	...

PROJECT NO.

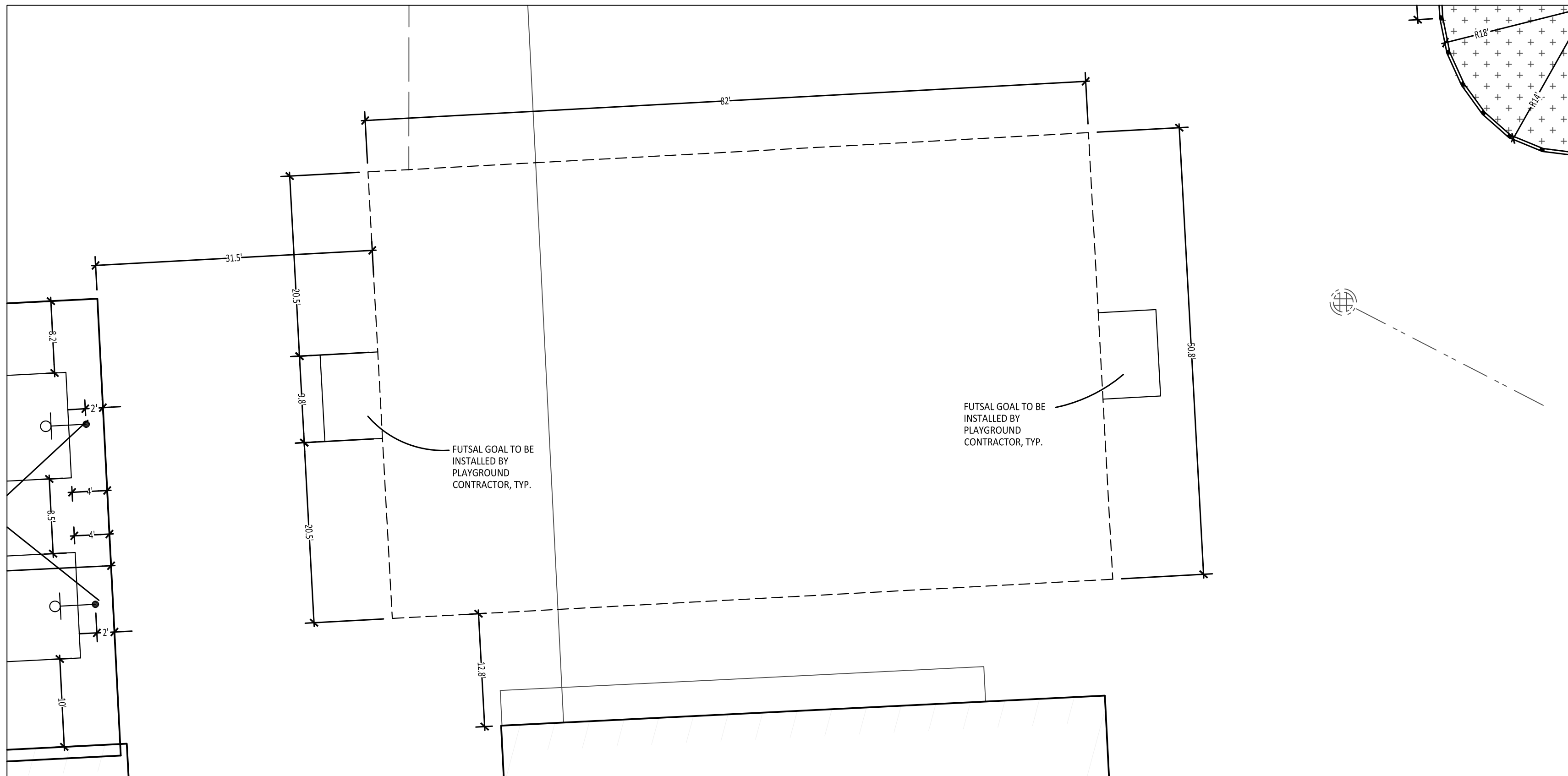
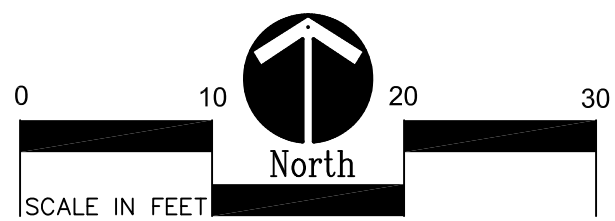
22093B

DRAWING NO.

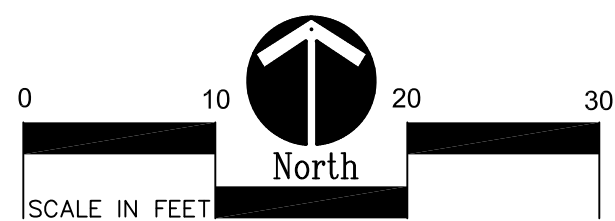
C2.1



1 **Playground Layout Enlargement Plan - Lower Elementary and Paved Play**
Scale: 1"=10'-0"



2 **Playground Layout Enlargement Plan - Futsal Field**
Scale: 1"=10'-0"



LAYOUT NOTES:

- EXISTING CONDITIONS SURVEY PROVIDED BY PEA GROUP, 1849 POND RUN, AUBURN HILLS, MICHIGAN, 48326, (248)689-9090.
- PROTECT ALL TREES AND EXISTING FEATURES TO REMAIN AS SPECIFIED.
- PAVEMENT DIMENSIONS AND RADII ARE TO EDGE OF PAVEMENT OR BACK OF CURB. PLASTIC EDGING DIMENSIONS AND RADII ARE TO CENTER OF EDGE SEGMENT.
- ALL NEW PAVEMENTS AND WALKS TO MEET 2010 ADA STANDARDS FOR ACCESSIBLE DESIGN.
- ALL EXISTING PLAYGROUND EQUIPMENT TO BE REMOVED **MUST BE DESTROYED COMPLETELY** SO THAT IT CANNOT BE RE-ASSEMBLED. THE CONTRACTOR IS NOT ALLOWED TO RE-USE, DONATE, OR SELL ANY EXISTING PLAYGROUND EQUIPMENT SCHEDULED TO BE DEMOLISHED.
- THE PURCHASE AND INSTALLATION OF ALL PLAYGROUND EQUIPMENT, PLAY SAFETY SURFACING, AND PLAY SAFETY SURFACING EDGING IN UNDER A SEPARATE CONTRACT AND IS NOT INCLUDED IN THIS BID PACKAGE. SITE CONTRACTORS ARE REQUIRED TO COORDINATE INSTALLATION OF PLAYGROUND EQUIPMENT, PLAY SAFETY SURFACING, AND PLAY SAFETY SURFACING EDGING WITH PLAYGROUND CONTRACTOR PRIOR TO ANY EXCAVATION OR PAVING INSTALLATION.

1ST - 5TH GRADE PAINTED GAMES SCHEDULE:

SYMBOL	DESCRIPTION	DETAIL
1	MAP OF UNITED STATES	SEE SPECS, 3/C2.0
2	BASKETBALL LANE LAYOUT	2 / C2.0
3	SILLY TRACK	4 / C2.0
4	MIRROR ME	5 / C2.0
5	N/A	XX / CXXX

BARRIER-FREE NOTES

BARRIER-FREE PARKING AND ACCESSIBLE ROUTE(S) MUST COMPLY WITH THE AMERICANS WITH DISABILITIES ACT AND MICHIGAN BARRIER-FREE CODE REQUIREMENTS, INCLUDING BUT NOT LIMITED TO THE FOLLOWING:

- 1.50 (2%) MAXIMUM CROSS-SLOPE ON ACCESSIBLE ROUTE.
- NO CHANGES IN LEVEL GREATER THAN 1/2" ALONG ACCESSIBLE ROUTE.
- 1.20 (5%) MAXIMUM LONGITUDINAL SLOPE ON ACCESSIBLE ROUTE (EXCEPT WHERE RAMPS ARE PROVIDED).
- 1.50 (2%) MAXIMUM SLOPE (IN ANY DIRECTION) IN B.F. PARKING AND ACCESS AISLES.

NOTE: VERIFY LOCATION OF NEW PLAYGROUND EQUIPMENT PRIOR TO INSTALLATION OF ANY CONCRETE CURB. CONCRETE CURB TO BE INSTALLED OUTSIDE OF FALL SAFETY ZONE OF EACH PIECE OF EQUIPMENT PER ASTM 1487-05 AND MANUFACTURER'S WRITTEN RECOMMENDATIONS.

NOTE: PLAYGROUND EQUIPMENT AND SURFACING PURCHASE AND INSTALLATION IS UNDER SEPARATE CONTRACT AND IS NOT INCLUDED IN THIS BID PACKAGE. CONTRACTOR IS REQUIRED TO COORDINATE INSTALLATION OF PLAYGROUND EQUIPMENT AND SURFACING WITH PLAYGROUND INSTALLER PRIOR TO ANY EXCAVATION AND CONCRETE CURBING OR PAVING INSTALLATION.

PROPOSED FEATURES LEGEND:

SYMBOL	DESCRIPTION	KEY	DESCRIPTION	DETAIL
	RESILIENT SURFACING (BY OTHERS)	A	STRAIGHT FACE CONCRETE CURB	6 / C4.0
	LOOSE FILL SAFETY SURFACING (BY OTHERS)	B	THICKENED EDGE CONCRETE	11 / C4.0
	N/A	C	RESILIENT SURFACING (BY OTHERS)	7 / C4.0
	N/A	D	LOOSE FILL SAFETY SURFACING (BY OTHERS)	3 & 9 / C4.0
	N/A	E	PLASTIC PLAY EDGING (BY OTHERS)	12, 13, & 18 / C4.0
	N/A	F	N/A	
	N/A	G	CONCRETE WALK	2 / C4.0
	N/A	H	PLAY AREA ENTRANCE RAMP	16 / C4.0
	BITUMINOUS SEALCOATING	J	N/A	
	N/A	K	BASKETBALL HOOP POLE (BY OTHERS)	17 / C4.0
	N/A	L	N/A	
	N/A	M	N/A	
	BITUMINOUS SEALCOATING	N	N/A	SEE SPECS
	N/A	P	N/A	
	PLASTIC PLAY EDGING, BY OTHERS REFER TO PLAYGROUND CONTRACTOR'S DRAWINGS AND SPECS			
	STRAIGHT FACE CONCRETE CURB			
	THICKENED EDGE CONCRETE			
	INTEGRAL WALK AND CURB			
	BARRIER-FREE PLAY AREA ENTRANCE RAMP			
	CHAIN LINK FENCE			
	LIMIT OF WORK			
	ENLARGEMENT LIMIT LINE			
	SIGNS			
	COMMUNICATION BOARD			10 / C4.0