



Park Hill School District

Building Successful Futures • Each Student • Every Day

REQUEST FOR PROPOSAL

2024 Sidewalk Projects

- Park Hill High School
- Park Hill South High School
- Union Chapel Elementary

Detailed Proposal Information is available on the District Website

<http://www.parkhill.k12.mo.us>

Bid Closing Date: January 29, 2024

Bid Closing Time: 10:00 AM CST

Park Hill School District Reserves the right to reject any or all proposals and to waive informalities or irregularities in any proposal.

Dear Contractor:

The Park Hill School District is seeking proposals from qualified contractors to complete concrete projects throughout the district.

A mandatory "Pre-Bid" meeting and walk through will start at Park Hill South High School at 4500 NW Riverpark Dr. Riverside, MO 64152 we will meet on **Tuesday January 16, 2024 at 9:30 am** in front of the school. We will continue to Union Chapel and then Park Hill High School if needed. If you have any questions, contact Joe Hagg 816-359-6967.

Sealed proposals will be accepted at Support Services office located at 9501 N. Seymour Ave, Kansas City, MO 64153 on January 29, 2024 at 10:00 am. Proposals will be opened at that time.

Proposals must be returned on the form(s) provided, with "Bid Proposal- 2024 Sidewalk Projects" clearly on the label. A proposal must consist of all pages of the proposal request including the signature page signed by an authorized representative of the firm. Nonconformance with these instructions may be grounds for rejection of proposal.

A bid shall be accompanied by a certified check, Cashier's check, or surety bond for ten percent of the amount of the bid included in the proposal as a guarantee that the contractor will enter a contract to perform the proposal pursuant to the plans and specifications.

The District reserves the right to reject any and all proposals and to waive informalities.

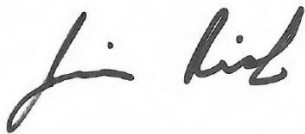
Faxed or emailed proposals will not be accepted. Late proposals will be rejected, unopened, and returned.

Work must be completed by July 1, 2024. Must coordinate with District for scheduling. Any work not completed by July 1, 2024 shall result in a \$1,000 per diem penalty to be deducted by the District from final payment.

Prevailing Wages will apply. Current Missouri Division of Labor Standards, Wage and hour section, Annual Wage order No. 27, Section 083, Platte County, or most current version will apply.

The Project is tax exempt.

Contractor is responsible for all required permits.

A handwritten signature in black ink, appearing to read "Jim Rich", is positioned above the printed name.

Jim Rich

Director of Operations

PROJECT SCHEDULE

January 8, 2024: RFP published to Park Hill School District Website

January 16, 2024: Mandatory Pre-Bid Meeting at Park Hill South High School at 9:30am

January 29, 2024: Sealed bids due by 10:00am to 9501 N. Seymour Ave, Kansas City, MO 64153

February 22, 2024: Park Hill School District Board of Education: First Read- Bids, Contracts, Agreements

March 7, 2024: Park Hill School District Board of Education: Second Read and Vote

March 8, 2024: Approximate work Start Date Package 1 and Package 2

June 1, 2024: Approximate work Start Date Package 3

July 1, 2024: Work Completion Date

PROJECT REQUIREMENTS

Project Safety

Construction equipment and the work area is required to be secured in a manner that protects the public and employees from hazard. The Contractor will be responsible for assuring that physical barriers required to prevent vehicle and pedestrian hazards remain intact throughout the duration of the project. The Contractor is required to conduct operations in a manner that is consistent and compliant with OSHA safety requirements. Contractor to provide all temporary utilities, including toilet, water, electric, etc. No access to the building unless for emergency.

Building Permits, Traffic Permits and Inspections

Contractor will be responsible for obtaining and the cost of all required building permits, storm water permits and plans, traffic permits, water metering and inspection fees associated with this project. All permits must be obtained prior to commencing work.

Public and Private Utilities

Contractor shall contact local agencies to locate underground utilities. Park Hill School District shall be responsible to locate private utilities. Contractor shall protect known utilities, landscaping, curbing, irrigation system components and all existing structures. Should damage occur, contractor is responsible to return each above to their original condition.

Removal of Construction Debris and Materials

Remove and dispose of materials properly per AHJ, OSHA, and EPA regulations. The Contractor will not dispose of any trash or construction materials in property's trash containers. Construction debris, millings and excavated granular, soil or excess materials must be removed from the project site by Contractor daily. Ensure no rock or construction material reaches building, landscape, or other areas. Concrete wash out shall be off-site. Broom or blow clean all trash and construction debris at each facility's final completion. Return landscaping and all existing structures to original condition or better.

Warranty

Contractor shall warranty all project materials and workmanship for a minimum of one year from substantial completion. New surfacing shall be warranted from raveling, delamination, potholing, or surface cracking for a period of one year. Contractor is responsible to maintain proper drainage and insure no ponding water. Specific concerns regarding warrantability due to existing condition(s) must be brought to the attention of Park Hill School District in advance.

Concrete Curb & Gutter

Concrete curb and gutter to be match existing curbing in style, reveal and width. Thickness to be per plans and details. Place 1/2-inch fiber expansion joints where new curbing abuts existing. Dowel new curbing to existing with three (3) #4 rebar. Place three (3) continuous runs of #4 rebar in new curb and gutter. Expansion joints shall not exceed every 30 LF of curbing run, minimum 1-inch-deep tool joints not to exceed every 10 LF of curbing run. Concrete to be minimum 3,500 psi. Back-fill topsoil behind new curb and tamp.

Concrete Sidewalk

Concrete sidewalk to be a minimum of 4-inches thick and reinforced with light welded wire mesh. Place 1/2-inch fiber expansion joints where new concrete abuts existing. Expansion joints shall be placed at sidewalk intersections, at backside of curbing and not exceed every 50 LF of sidewalk run. Minimum 1-inch-deep tool joints to be placed on center and not to exceed the width of the sidewalk. Sidewalks wider than 8'-0" to have longitudinal tool joint at mid-point in width. Concrete to be minimum 3,500 psi. Back-fill topsoil behind new sidewalk and tamp.

Concrete Pavement

Concrete pavement to be a minimum of 6-inches thick and reinforced with heavy welded wire mesh. Place 1/2-inch fiber expansion joints where new concrete abuts existing. Dowel new concrete pavement to existing with #4 rebar not less than every 18-inches on center or per plans. Expansion joints shall not exceed every sixty feet (60') square. Apply cure and seal. As soon as feasible, saw-cut minimum 2-inch-deep control joints not to exceed fifteen feet (15') square. Concrete to be minimum 4,000 psi. Do not permit vehicular traffic on concrete pavement until it has sufficiently cured.

Painted Pavement Markings

Where feasible, allow new surfacing to cure for two to four weeks prior to new painting. New pavement markings to match existing. Existing acrylic paint to be re-applied to match. Application with brush or roller is not allowed. Mark the International Handicapped Symbol at indicated parking spaces using a suitable template and pneumatic sprayer. Apply uniformly painted markings of color(s), lengths, and widths to match existing with sharp edges and ends.

Measurements

Contractor will be responsible for taking accurate measurements of all areas.

Concrete Sidewalk

Concrete sidewalk to be a minimum of 4-inches thick and reinforced with light welded wire mesh. Place 1/2-inch fiber expansion joints where new concrete abuts existing. Expansion joints shall be placed at sidewalk intersections, at backside of curbing and not exceed every 50 LF of sidewalk run. Minimum 1-inch-deep tool joints to be placed on center and not to exceed the width of the sidewalk. Sidewalks wider than 8'-0" to have longitudinal tool joint at mid-point in width. Concrete to be minimum 3,500 psi. Back-fill topsoil behind new sidewalk and tamp.

Concrete Pavement

Concrete pavement to be a minimum of 6-inches thick and reinforced with heavy welded wire mesh. Place 1/2-inch fiber expansion joints where new concrete abuts existing. Dowel new concrete pavement to existing with #4 rebar not less than every 18-inches on center or per plans. Expansion joints shall not exceed every sixty feet (60') square. Apply cure and seal. As soon as feasible, saw-cut minimum 2-inch-deep control joints not to exceed fifteen feet (15') square. Concrete to be minimum 4,000 psi. Do not permit vehicular traffic on concrete pavement until it has sufficiently cured.

Painted Pavement Markings

Where feasible, allow new surfacing to cure for two to four weeks prior to new painting. New pavement markings to match existing. Existing acrylic paint to be re-applied to match. Application with brush or roller is not allowed. Mark the International Handicapped Symbol at indicated parking spaces using a suitable template and pneumatic sprayer. Apply uniformly painted markings of color(s), lengths, and widths to match existing with sharp edges and ends.

Measurements

Contractor will be responsible for taking accurate measurements of all areas.

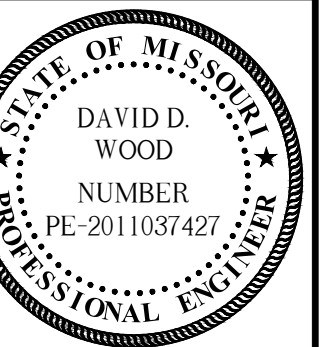
Package 1

Park Hill South High School

- Install new sidewalk per Kaw Valley Plans approximately **2,198 Linear ft.**
- Make note as there is some fence work, signs to move, and some obstacles like light poles and electrical boxes to go around.
- Addition to plans there is a section of the driveway that needs torn out hauled away and new concrete poured. Part of this area would need to come out per plans for the ramp. The area is **approximately 48 sqyd's** This area needs to be a **minimum depth of 6"**
- Part of these sidewalks will go through an irrigated area. The district grounds will take care of moving the irrigation pipe, wire, and heads. After area is dug out and before base is put in this area coordinate with the District so these can be marked and made sure we are aware of all location of lines.
- Remove form boards and backfill with topsoil fixing any disturbed areas.
- applying fescue seed and seed aide.

PREPARED FOR:
PARK HILL SCHOOL DISTRICT
ADDRESS: 7703 NW BARRY RD
KANSAS CITY, MISSOURI 64153
PHONE: 816-539-6477
CONTACT: JIM RICH
EMAIL: richj@parkhill.k12.mo.us

PREPARED BY:
KAW VALLEY ENGINEERING, INC.
14700 W 114TH TERR.
LENEXA, KANSAS 66215
PHONE: (913) 894-5150
CONTACT: DAVID WOOD
EMAIL: wood@kveng.com



DAVID D. WOOD
ENGINEER
MO # 2011037427

KAW VALLEY ENGINEERING

KAW VALLEY ENGINEERING, INC. IS AUTHORIZED TO OFFER ENGINEERING SERVICES BY MISSOURI STATE CERTIFICATE OF AUTHORITY # 000642.
EXPIRES 12/31/23

KVE

LENEVA, KANSAS 66215
PH. (913) 894-5150
lv@kveeng.com | www.kveeng.com



Know what's **below**.
Call before you dig.

WARRANTY / DISCLAIMER

THE DESIGNS REPRESENTED IN THESE PLANS ARE IN ACCORDANCE WITH ESTABLISHED PRACTICES OF CIVIL ENGINEERING FOR THE DESIGN FUNCTIONS AND USES INTENDED BY THE OWNER AT THIS TIME. HOWEVER, NEITHER KAW VALLEY ENGINEERING, INC NOR ITS PERSONNEL CAN OR DO WARRANTY THESE DESIGNS OR PLANS AS CONSTRUCTED, EXCEPT IN THE SPECIFIC CASES WHERE KAW VALLEY ENGINEERING PERSONNEL INSPECT AND CONTROL THE PHYSICAL CONSTRUCTION ON A CONTEMPORARY BASIS AT THE SITE.

CAUTION – NOTICE TO CONTRACTOR

THE CONTRACTOR IS SPECIFICALLY CAUTIONED THAT THE LOCATION AND/OR ELEVATION OF EXISTING UTILITIES AS SHOWN ON THESE PLANS IS BASED ON RECORDS OF THE VARIOUS UTILITY COMPANIES AND, WHERE POSSIBLE, MEASUREMENTS TAKEN IN THE FIELD. THE INFORMATION IS NOT TO BE RELIED ON AS BEING EXACT OR COMPLETE. THE CONTRACTOR MUST CALL THE APPROPRIATE UTILITY COMPANY AT LEAST 72 HOURS BEFORE ANY EXCAVATION TO REQUEST EXACT FIELD LOCATION OF UTILITIES. IT SHALL BE THE RESPONSIBILITY OF THE CONTRACTOR TO LOCATE ALL EXISTING UTILITIES WHICH CONFLICT WITH THE PROPOSED IMPROVEMENTS SHOWN ON THE PLANS. THE CONTRACTOR SHALL EXPOSE EXISTING UTILITIES AT LOCATIONS OF POSSIBLE CONFLICTS PRIOR TO ANY CONSTRUCTION.

SAFETY NOTICE TO CONTRACTOR

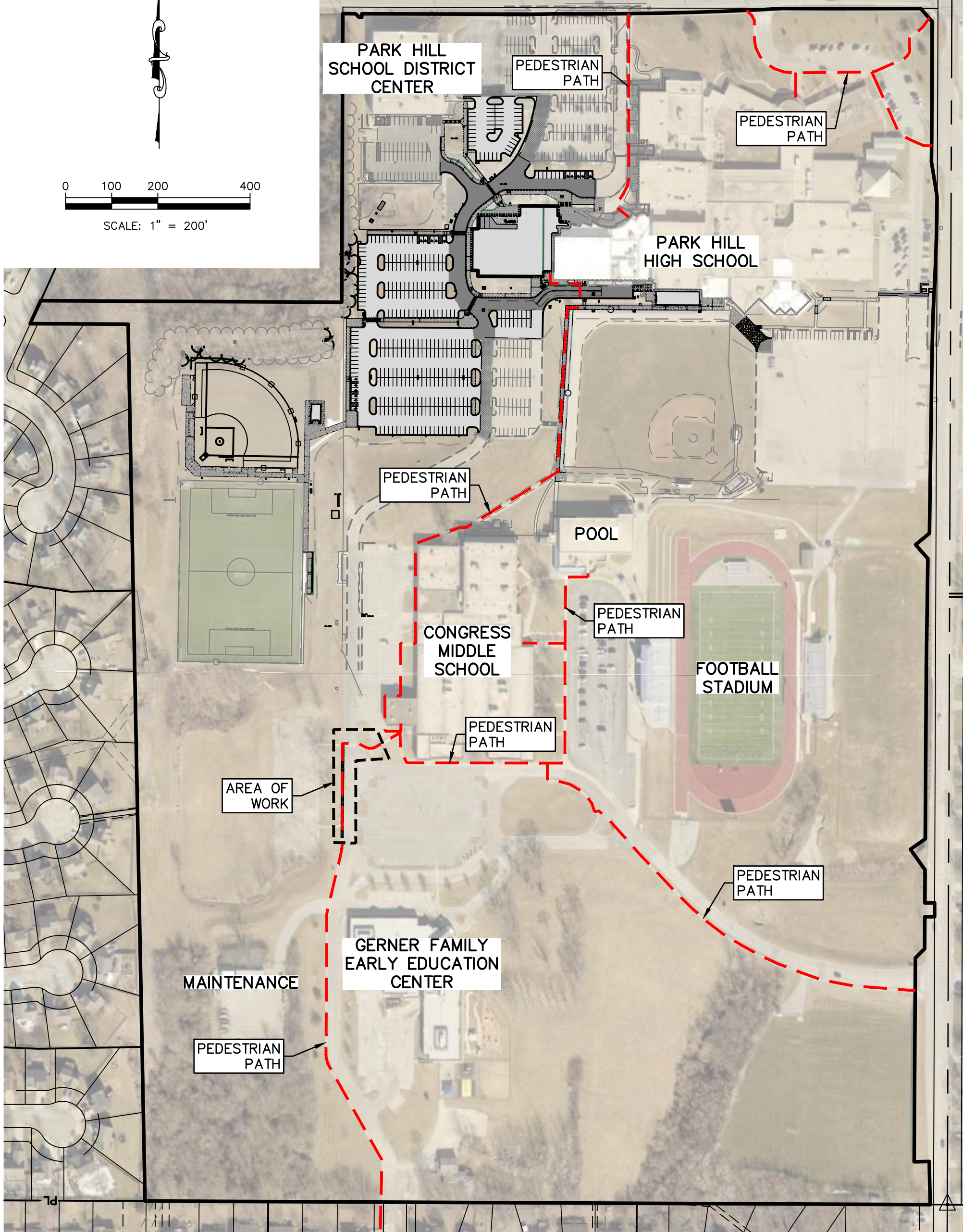
IN ACCORDANCE WITH GENERALLY ACCEPTED CONSTRUCTION PRACTICES, THE CONTRACTOR WILL BE SOLELY AND COMPLETELY RESPONSIBLE FOR CONDITIONS OF THE JOB SITE, INCLUDING SAFETY OF ALL PERSONS AND PROPERTY DURING PERFORMANCE OF THE WORK. THIS REQUIREMENT WILL APPLY CONTINUOUSLY AND NOT BE LIMITED TO NORMAL WORKING HOURS.

THIS DRAWING SHALL NOT BE UTILIZED BY ANY PERSON, FIRM, OR CORPORATION IN WHOLE OR IN PART WITHOUT THE SPECIFIC PERMISSION OF KAW VALLEY ENGINEERING, INC.

Package 2

Park Hill High School

- Install new sidewalk per Kaw Valley plans **approximately 205 linear ft.**
- Remove section of sidewalk that will no longer be needed and backfill with topsoil.
- Apply fescue seed and seed aide in all disturbed areas.
- Remove form boards and backfill with topsoil.
- Make note of the remarking of the walkway across the drive



BARRY CAMPUS SIDEWALK PLAN
7701 NW BARRY ROAD
KANSAS CITY, PLATTE COUNTY, MO 64153

PREPARED FOR: PARK HILL SCHOOL DISTRICT ADDRESS: 7703 NW BARRY RD KANSAS CITY, MISSOURI 64153 PHONE: 816-539-6477 CONTACT: JIM RICH EMAIL: richj@parkhill.k12.mo.us	PREPARED BY: KAW VALLEY ENGINEERING, INC. 14700 W 114TH TERR. LENEXA, KANSAS 66215 PHONE: (913) 894-5150 CONTACT: DAVID WOOD EMAIL: wood@kveg.com
--	--

SAFETY NOTICE TO CONTRACTOR

IN ACCORDANCE WITH GENERALLY ACCEPTED CONSTRUCTION PRACTICES, THE CONTRACTOR WILL BE SOLELY AND COMPLETELY RESPONSIBLE FOR CONDITIONS OF THE JOB SITE, INCLUDING SAFETY OF ALL PERSONS AND PROPERTY DURING PERFORMANCE OF THE WORK. THIS REQUIREMENT WILL APPLY CONTINUOUSLY AND NOT BE LIMITED TO NORMAL WORKING HOURS.

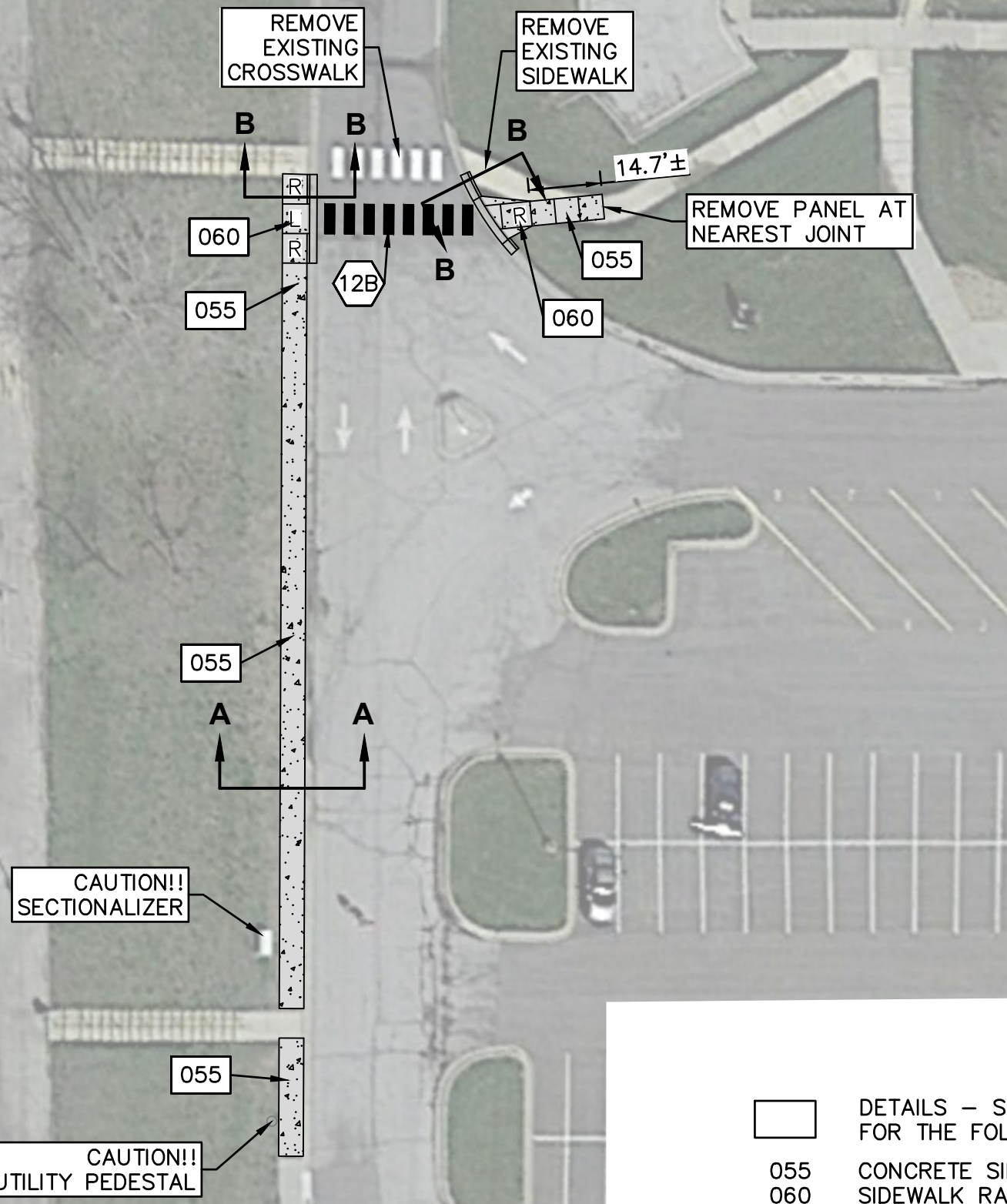
WARRANTY / DISCLAIMER

THE DESIGNS REPRESENTED IN THESE PLANS ARE IN ACCORDANCE WITH ESTABLISHED PRACTICES OF CIVIL ENGINEERING FOR THE DESIGN FUNCTIONS AND USES INTENDED BY THE OWNER AT THIS TIME. HOWEVER, NEITHER KAW VALLEY ENGINEERING, INC NOR ITS PERSONNEL CAN OR DO WARRANTY THESE DESIGNS OR PLANS AS CONSTRUCTED, EXCEPT IN THE SPECIFIC CASES WHERE KAW VALLEY ENGINEERING PERSONNEL INSPECT AND CONTROL THE PHYSICAL CONSTRUCTION ON A CONTEMPORARY BASIS AT THE SITE.

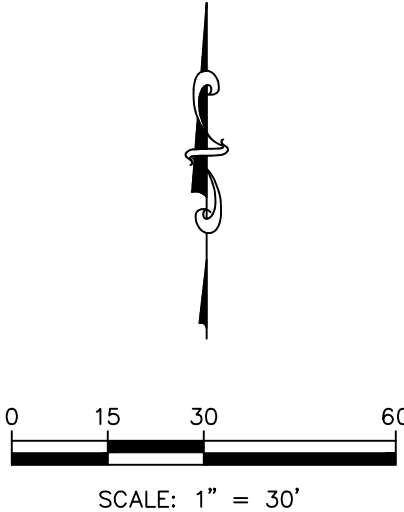
CAUTION – NOTICE TO CONTRACTOR



THE CONTRACTOR IS SPECIFICALLY CAUTIONED THAT THE LOCATION AND/OR ELEVATION OF EXISTING UTILITIES AS SHOWN ON THESE PLANS IS BASED ON RECORDS OF THE VARIOUS UTILITY COMPANIES AND, WHERE POSSIBLE, MEASUREMENTS TAKEN IN THE FIELD. THE INFORMATION IS NOT TO BE RELIED ON AS BEING EXACT OR COMPLETE. THE CONTRACTOR MUST CALL THE APPROPRIATE UTILITY COMPANY AT LEAST 72 HOURS BEFORE ANY EXCAVATION TO REQUEST EXACT LOCATIONS OF UTILITIES. IT SHALL BE THE RESPONSIBILITY OF THE CONTRACTOR TO RELOCATE ALL EXISTING UTILITIES WHICH CONFLICT WITH PROPOSED IMPROVEMENTS SHOWN ON THE PLANS.

THE CONTRACTOR SHALL EXPOSE EXISTING UTILITIES AT LOCATIONS OF POSSIBLE CONFLICTS PRIOR TO ANY CONSTRUCTION.



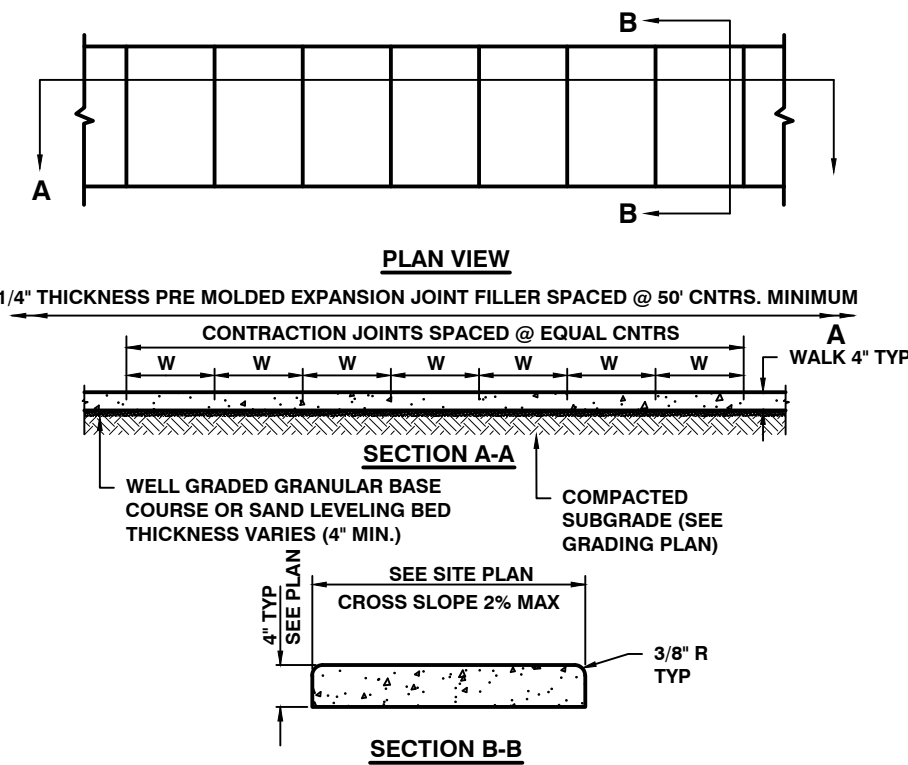
811
Know what's below.
Call before you dig.



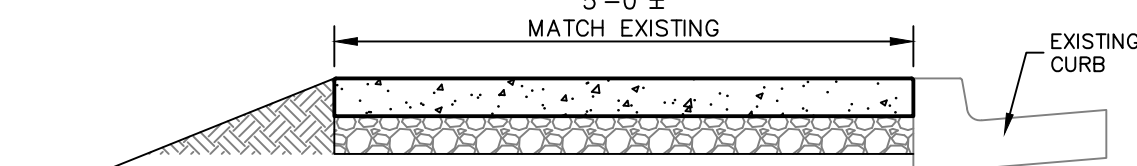
- | | |
|---|---|
|  | DETAILS - SEE THIS SHEETS
FOR THE FOLLOWING DETAILS |
| 055 | CONCRETE SIDEWALK |
| 060 | SIDEWALK RAMP |
|  | NOTES: |
| 12B | CROSSWALK 6'x24" WHITE LINES
AT 24" TO DELINEATE CROSSWA |

NOTES

1. BACKFILL MAY BE REQUIRED ALONG NORTH AND WEST EDGE OF SIDEWALK FIELD VERIFY CONDITIONS.
2. CONTRACTOR MAY ADJUST SIDEWALK ROUTE TO AVOID OBSTRUCTIONS. MAX RUNNING SLOPE 5% MAX CROSS SLOPE 2%.
3. CONTRACTOR TO FINE GRADE, SEED, FERTILIZE AND MULCH AREAS DISTURBED BY CONSTRUCTION. ALL WORK TO BE IN ACCORDANCE WITH APWA SPECIFICATION SECTION 2400. SEED MIX SHALL BE SEEDING MIX 1 (APWA 2401.2 A1)



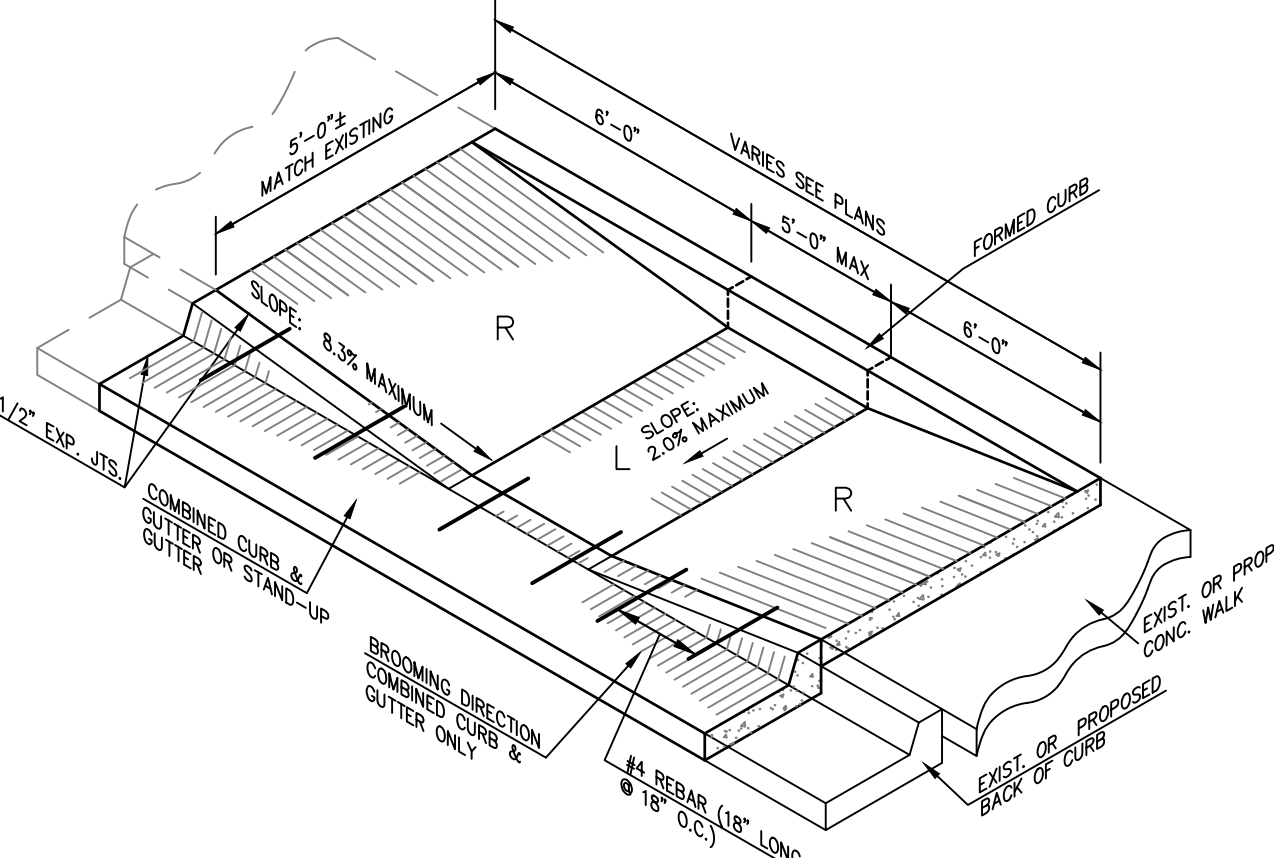
CONCRETE SIDEWALK 055



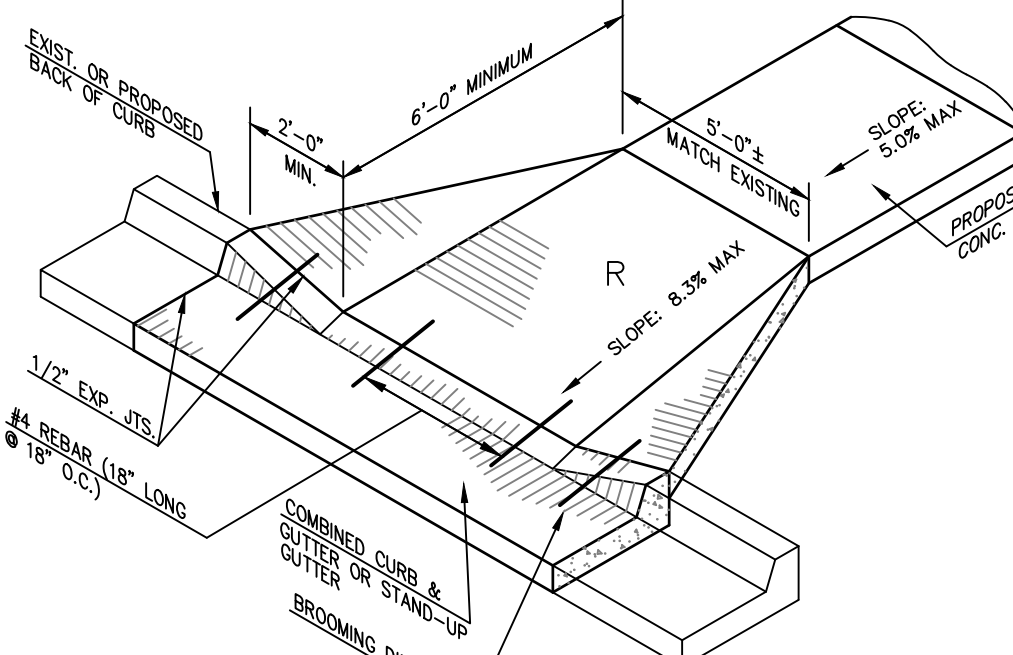
SECTION A-A

CONCRETE AND SIDEWALK NOTES:

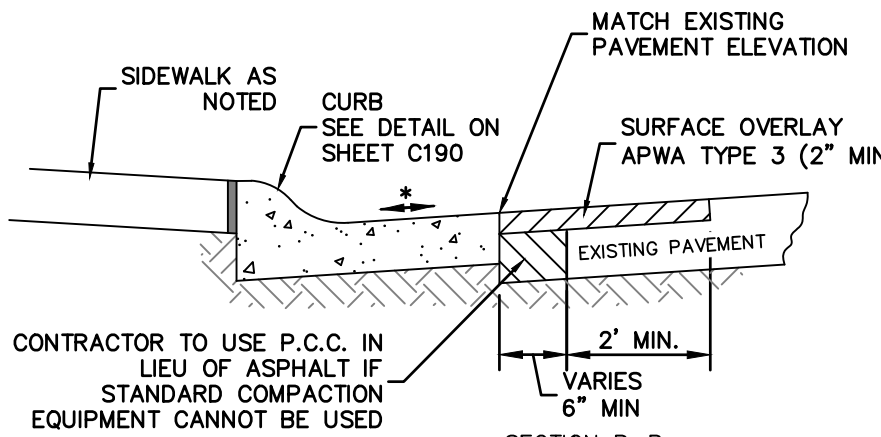
1. CONCRETE SHALL HAVE A MINIMUM COMPRESSIVE STRENGTH OF 4000 PSI AND COMPLY WITH KCMMB SPECIFICATIONS. ALL CONCRETE SHALL BE PLACED IN ACCORDANCE WITH APWA SECTION 2206.
2. REINFORCING STEEL SHALL BE GRADE 60 AND COMPLY WITH ASTM A615. EPOXY COATED BARS AS NOTED SHALL COMPLY WITH ASTM A775. ALL END OR DAMAGED AREAS SHALL BE FIELD REPAIRED WITH EPOXY COATING.
3. SIDEWALKS TO BE BROOM FINISHED.
4. SUBGRADE TO BE COMPACTED TO 95% MAXIMUM DRY DENSITY AS DETERMINED BY ASTM D698. MOISTURE CONTENT TO BE WITHIN A RANGE OF 2% BELOW TO 2% ABOVE OPTIMUM MOISTURE AS DEFINED BY ASTM D698.
5. SIDEWALK JOINTS MAY BE SAWN.



ISOMETRIC OF RAMP WITH LANDING



ISOMETRIC OF RAMP WITH LANDING



* MATCH EXISTING SLOPE DIRECTION

MILL AND OVERLAY/ ASPHALT EDGE TREATMENT DETAIL

Package 3

Union Chapel

- Install new 4' ADA sidewalk **approximately 125 linear ft.** from asphalt down to playground per confluence's design.
- Install a curb **approximately 18 linear ft** from stairs to start of the sidewalk.

File Location: S:\PROJECTS\2023\22558_Park Hill School\22558_Park Hill School\AUTOCAD_Plan\2-Playground\Sheet\205_Union Chapel Layout and Surface Plan - Union Chapel.dwg (Save Date: 11/17/2023 11:04 AM BY: swarrick) / Plot Date: 11/17/2023 1:03 PM BY: Shelly Warrick

THE SQUARE ABOVE ARE COLOR
WITH DIMENSIONS AND ELEVATIONS
WITH DIMENSIONS AND ELEVATIONS

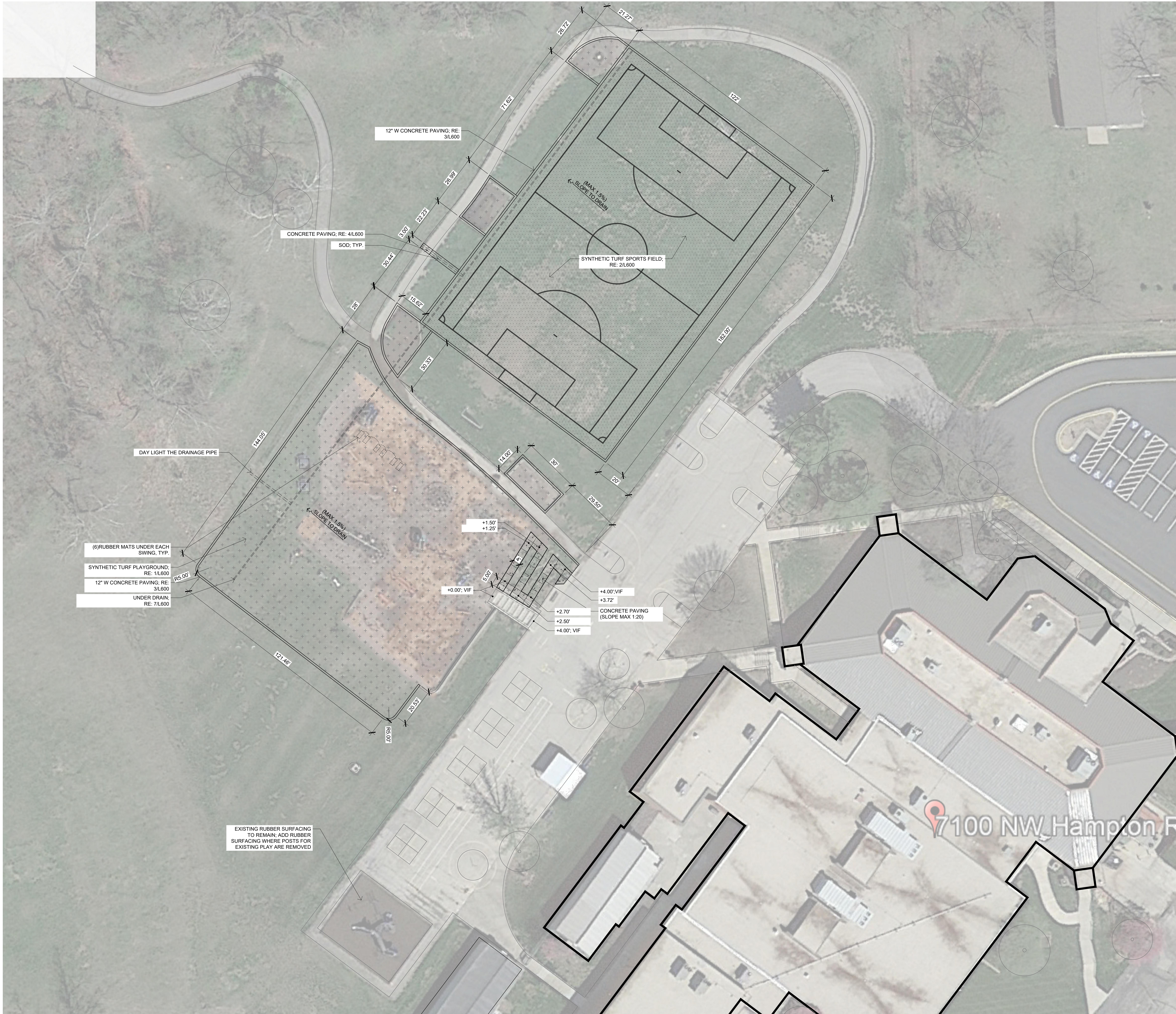
E

D

C

B

A



- LAYOUT NOTES:**
- EXISTING CONDITION INFORMATION IS BASED ON AERIAL IMAGE. CONTRACTOR TO VERIFY ALL SITE DIMENSIONS AND CONDITIONS PRIOR TO COMMENCING WORKS.
 - PAVING DIMENSIONS ARE TO BACK OF CURB UNLESS OTHERWISE NOTED.
 - ALL WORKS SHALL BE IN ACCORDANCE WITH OSHA CODES AND STANDARDS. NOTHING INDICATED ON THESE DRAWINGS SHALL RELIEVE THE CONTRACTOR FROM COMPLYING WITH ANY APPROPRIATE SAFETY REGULATIONS.
 - VERIFY COORDINATES PRIOR TO CONSTRUCTIONS.
 - CONTRACTOR TO SUPPLY AND INSTALL ALL NECESSARY SLEEVES UNDER PAVING AND WALKS.
 - PROPOSED SIGNAGE TO MEET CITY CODES FOR GROUND SIGNS.
 - ALL CONSTRUCTION JOINTS TO BE SAW CUT; RE: L600
 - PAVEMENT TYPES:
 - PAVEMENT JOINTING NOTES:
 - JOINTS BETWEEN CRITICAL POINTS ARE TO BE EQUALLY SPACED AS SHOWN.
 - WHERE NEW PAVEMENTS ARE CALLED FOR, PROVIDE AN EXPANSION JOINT AROUND ALL EXISTING UTILITIES, MANHOLES, POLES, LIGHTS, ETC.
 - PLACE EXPANSION JOINTS AT ALL VERTICAL ELEMENTS (BUILDING, COLUMNS, WALLS, BACK OF CURBS, ETC.) AND AT CHANGES IN GRADE, DIRECTION, AND APPROXIMATELY EVERY 30' U.N.O.
 - CONTRACTOR TO PROVIDE LAYOUT IN FIELD FOR LANDSCAPE ARCHITECT APPROVAL.

- GRADING NOTES:**
- CONTRACTOR TO VERIFY ALL SPOT ELEVATIONS FOR POSITIVE DRAINAGE BEFORE INSTALLATIONS. THE CONTRACTOR SHALL BE RESPONSIBLE FOR POSITIVE SURFACE DRAINAGE IN ALL AREAS, UNLESS OTHERWISE NOTED. ALL NEWLY GRADED GROUND SURFACES SHALL BE FINISHED TO UNIFORM GRADES AND SLOPED IN SUCH A MANNER TO BE FREE OF DEPRESSIONS THAT CAUSE AREAS OF STANDING WATER. THE CONTRACTOR SHALL REPORT ANY CONFLICTS WITH THIS REQUIREMENT TO THE LANDSCAPE ARCHITECT FOR RESOLUTION PRIOR TO FINAL GRADING OPERATIONS.
 - WALK CROSS SLOPE MAY NOT EXCEED 2.0%. RUNNING SLOPE MAY NOT EXCEED 5.0%. RUNNING SLOPE FOR RAMPS MAY NOT EXCEED 1:12 WITH LANDINGS THAT DO NOT EXCEED 2.0% IN ANY DIRECTION.
 - WHERE PROPOSED GRADES MEET EXISTING, BLEND GRADES TO PROVIDE A SMOOTH TRANSITION BETWEEN THE NEW WORK AND EXISTING WORK. PONDING AT JOINTS WILL NOT BE ACCEPTED.
 - FINAL GRADING TO BE APPROVED BY LANDSCAPE ARCHITECT.
 - PROVIDE MINIMUM 1" DEPTH OF TOPSOIL FOR ALL LAWN AREAS THAT ARE RESTORED.
 - DEBRIS SHALL BE REMOVED AND PAVEMENT WITHIN THE RIGHT-OF-WAY SWEEPED AT THE END OF EACH WORKING DAY.
 - CONTRACTOR TO FIELD ADJUST ALL EXISTING SITE UTILITIES TO NEW FINISHED GRADES. EXISTING UTILITIES INCLUDE, BUT ARE NOT LIMITED TO, FIRE HYDRANTS, MANHOLE RIMS, INLETS, WATER VALVES, AND LIGHT BASES.
 - SILT FENCE AND INLET PROTECTION SHALL BE MAINTAINED UNTIL ESTABLISHMENT OF PERMANENT GROUND COVER.

MATERIAL LEGEND

- SYNTHETIC TURF - PLAYGROUND
- SYNTHETIC TURF - SPORTS FIELD
- SOD
- CONCRETE PAVING
- UNDER DRAIN
- 12" W CONCRETE PAVING

Revision Schedule

No.	Date	Description
1	11/17/2023	100% CONSTRUCTION DOCUMENTS

**PARK HILL ELEMENTARY SCHOOL
EXISTING PLAYGROUND IMPROVEMENTS
UNION CHAPEL ELEMENTARY**
7100 NW HAMPTON RD
KANSAS CITY, MISSOURI 64152

Project Number	22558
Issue	00000
Date	2023-11-17

L205

BID FORM -2024 SIDEWALK PROJECTS

Package 1:

Park Hill South High School \$_____

This work is to be completed no later than July 1, 2024

All work not completed by July 1,2024 shall result in a \$1,000 per diem penalty to be deducted by the District from final payment.

Prices as bid on this form shall include total dollars amounts to cover work as specified, including labor, materials, overhead and profit.

COMPANY: _____

ADDRESS: _____

PHONE: _____

EMAIL: _____

PRINT NAME: _____

SIGNATURE: _____ DATE: _____

BID FORM -2024 SIDEWALK PROJECTS

Package 2:

Park Hill High School \$_____

This work is to be completed not later than July 1, 2024

All work not completed by July 1, 2024 shall result in a \$1,000 per diem penalty to be deducted by the District from final payment.

Prices as bid on this form shall include total dollars amounts to cover work as specified, including labor, materials, overhead and profit.

COMPANY:_____

ADDRESS:_____

PHONE: _____

EMAIL: _____

PRINT NAME:_____

SIGNATURE: _____DATE:_____

BID FORM -2024 SIDEWALK PROJECTS

Package 3:

Union Chapel Elementary \$_____

This work is to be completed not later than July 1, 2024

All work not completed by July 1, 2024 shall result in a \$1,000 per diem penalty to be deducted by the District from final payment.

Prices as bid on this form shall include total dollars amounts to cover work as specified, including labor, materials, overhead and profit.

COMPANY: _____

ADDRESS: _____

PHONE: _____

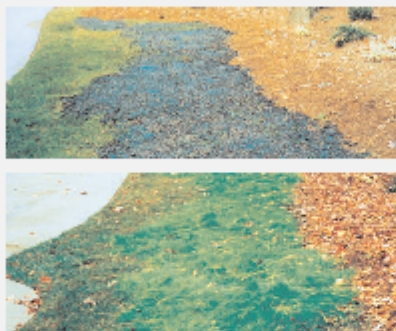
EMAIL: _____

PRINT NAME: _____

SIGNATURE: _____ DATE: _____



SEED AIDE® Seed Establishment Mulching Granules



Only Seed Aide® combines cellulose & wood fiber mulch, organic tackifier and bio-stimulant for superior turf establishment.

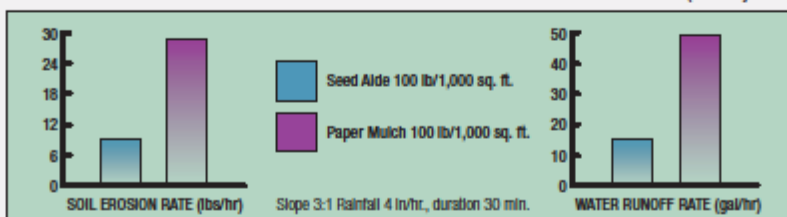
- Expanding cellulose/wood fiber mulch granules enhance germination and seedling emergence by holding seed in place and absorbing water
- Organic tackifier reduces soil erosion, water runoff and seed wash out
- Biostimulant increases root mass and stress tolerance for better grass establishment
- Tests prove that granular properties and texture result in greater water absorption and soil coverage than competing brands
- Can be applied by hand, with high-volume drop spreader or large-opening broadcast spreader
- Ideal for small-area repairs, or as a leave behind for touch up work on larger, hydraulic mulch projects
- Completely weed-free

Seed Aide Physical Properties

Cellulose Fiber54.5% +/-2 max.
Wood Fiber20% min.
Clay15% max.
Organic Tackifier1% min.
Moisture Content10% +/-2 max.
Seaweed Extract<1%
Marker Dye<1%
Water Holding Capacity400% min.
C Factor 3:1 Slope0.15

Seed Aide® Out-Performs Other Granules

(University Tested)



At comparable application rate of 100 lbs per 1000 sq ft, Seed Aide reduced soil erosion by 68.9% and water runoff by more than 63.2% versus the competitor's paper pallets.

Seed Aide Mulching Granules at the 100 lb rate yielded a higher percentage of germinating seed and greater plant growth than a comparable application of paper mulch.