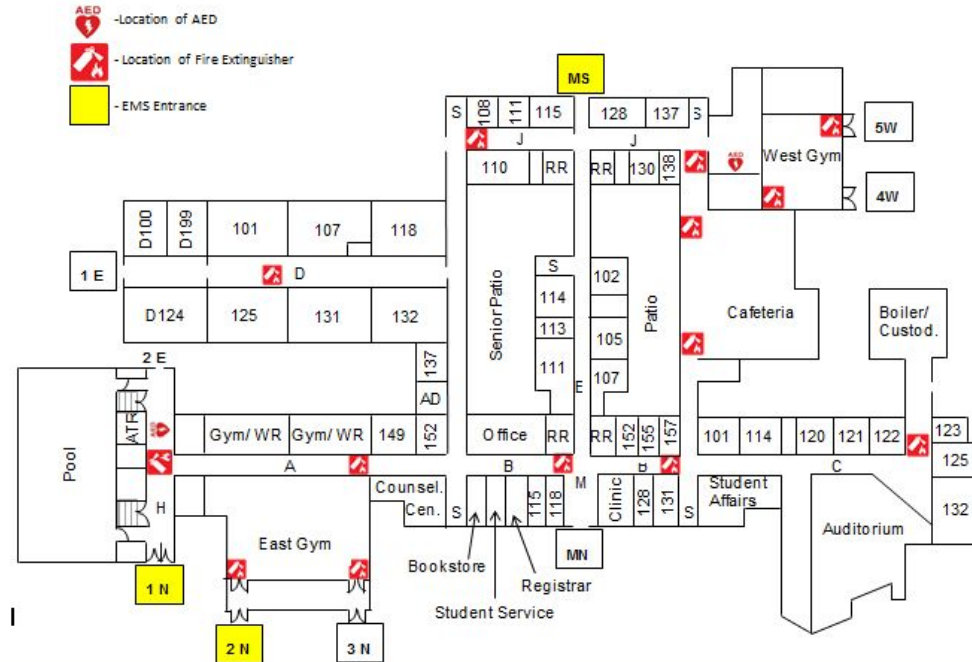


Emergency Situations

1. If an athletic emergency occurs, the athletic trainers will notify parents or guardians in a timely manner. If parents cannot be reached, athletic trainers will contact the alternate name on a student's athletic emergency card.
2. If, in the judgment of the athletic trainer, an injury is considered to be limb or life threatening, 911 will be called first, then parents or guardians will be notified. The administrator on duty must be immediately notified at the time an ambulance is called. The Athletic Directors will also be notified via walkie talkie.
3. In the event of an emergency situation the coach will be instructed to not move the athlete and contact the athletic trainer via walkie talkie or cell phone.
4. If the athletic trainer is not on site, coaches will call 911, then contact a parent or guardian. The administrator on duty must be immediately notified at the time an ambulance is called. The athletic director will also be notified.
5. Emergency action plans specific to athletic venues will instruct coaches of emergency protocols and locations of AEDs (see map of [MHS](#) , [Browning](#), and [Wharton](#)). Other venues will have access to a portable AED and Emergency Action Plans.

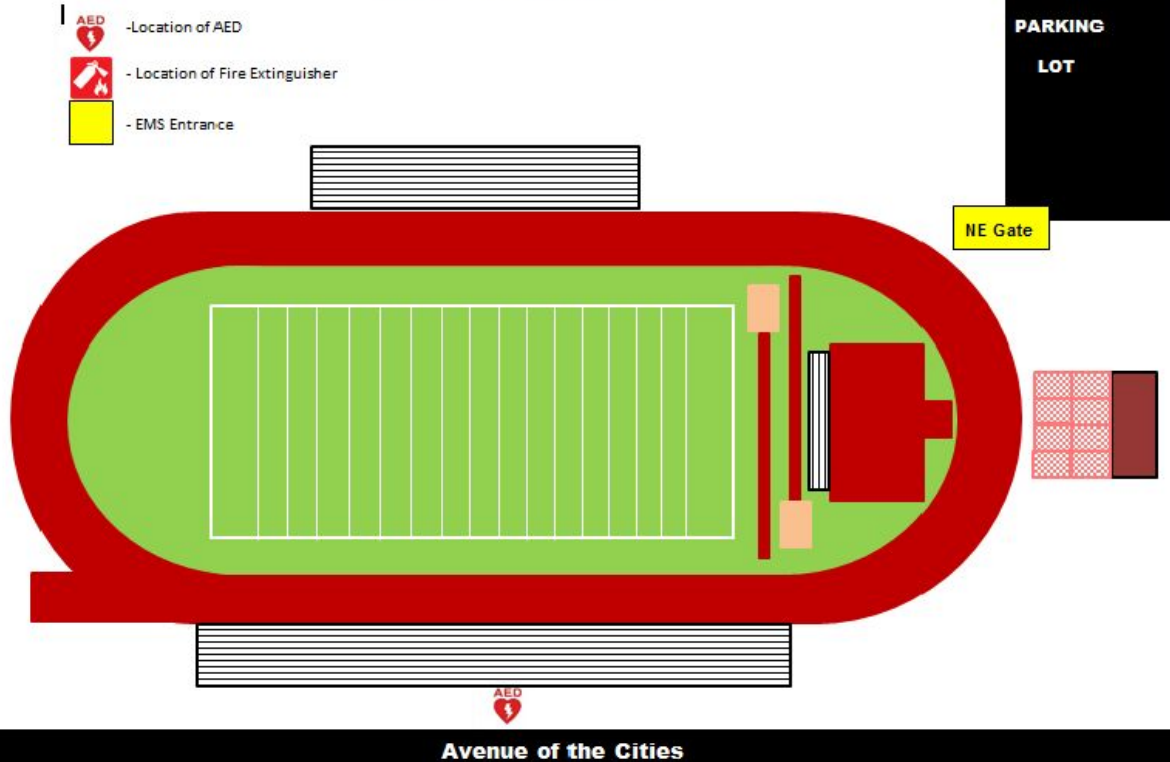
AED/EMS Locations: Indoor

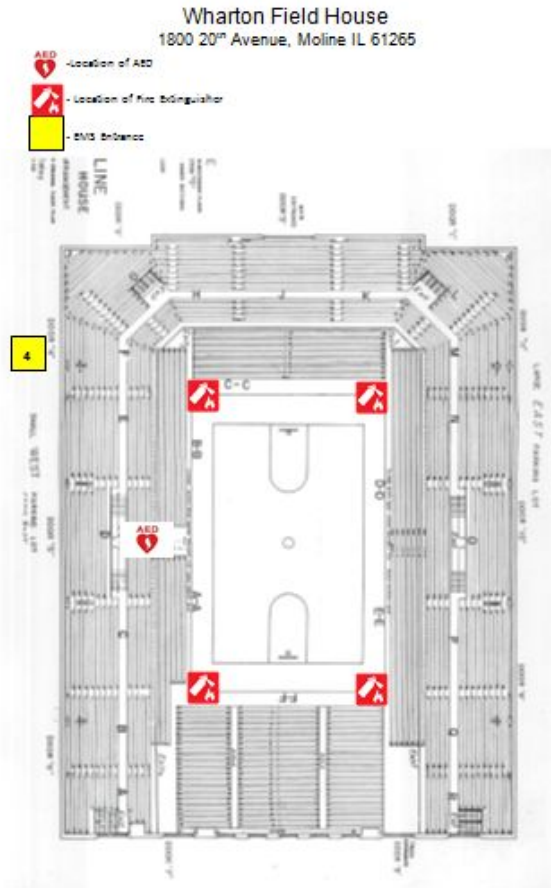
Moline High School
3600 Avenue of the Cities, Moline, IL 61265



AED/EMS Locations: Browning Stadium

Moline Browning Field
1800 20th Avenue, Moline IL 61265





AED/EMS Locations: Wharton Field House