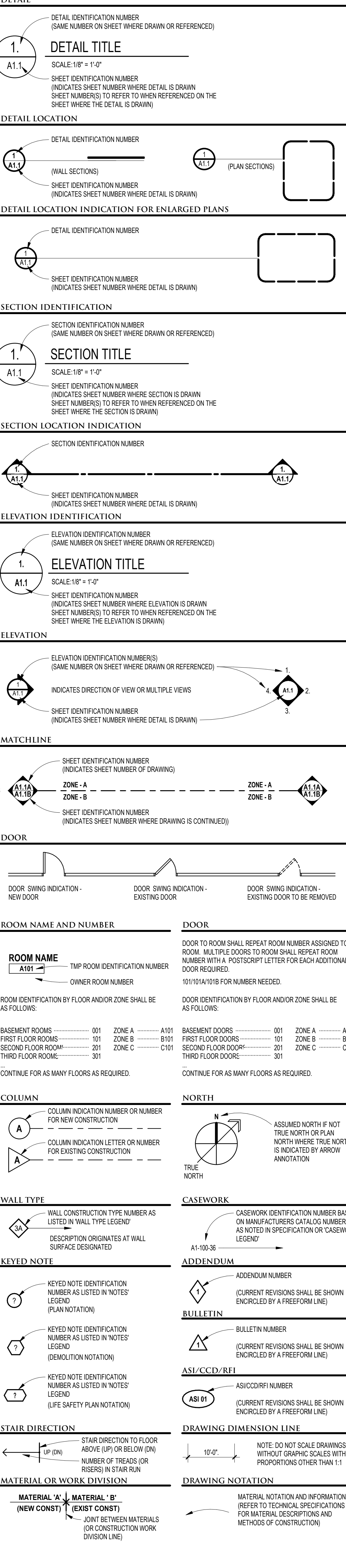
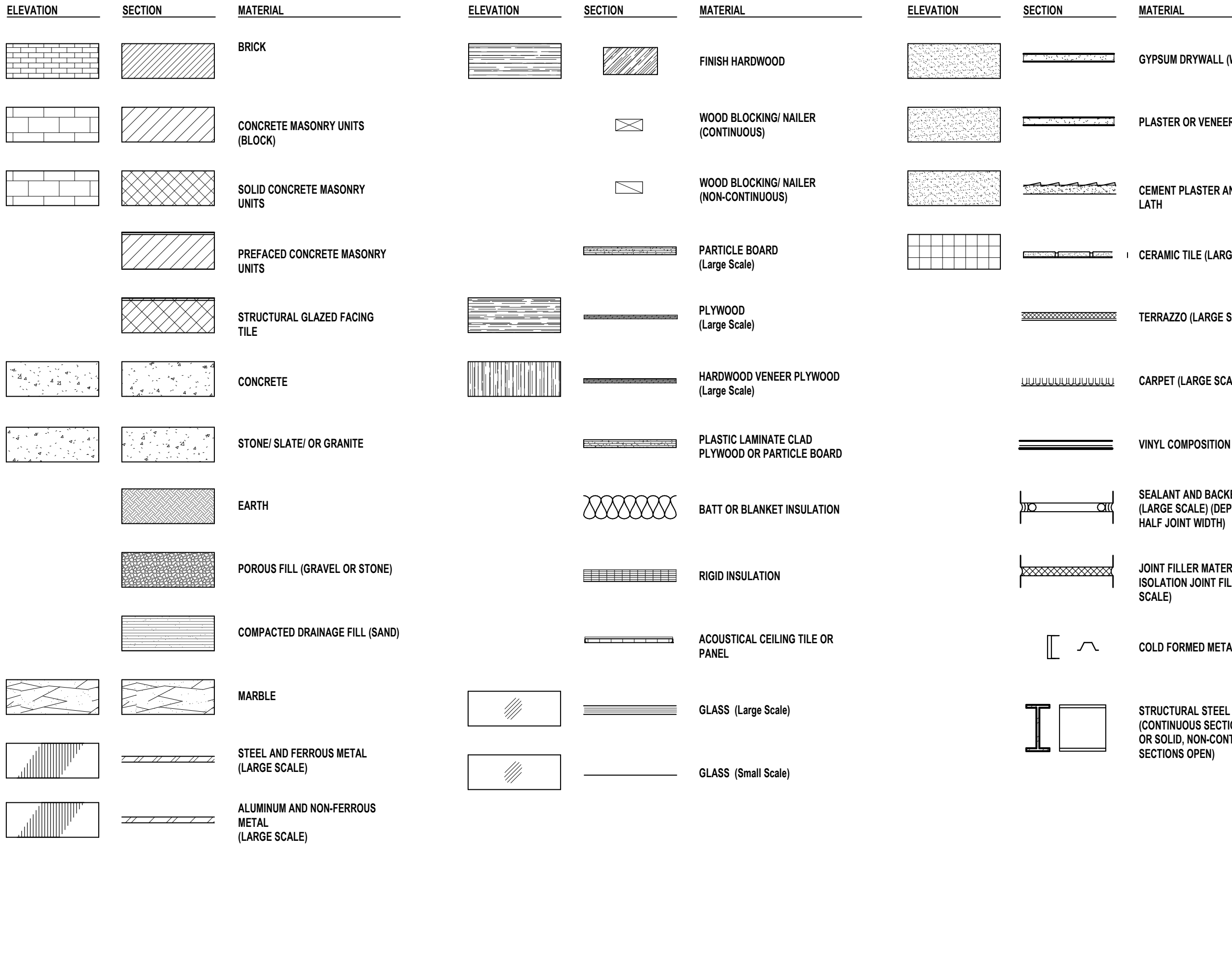
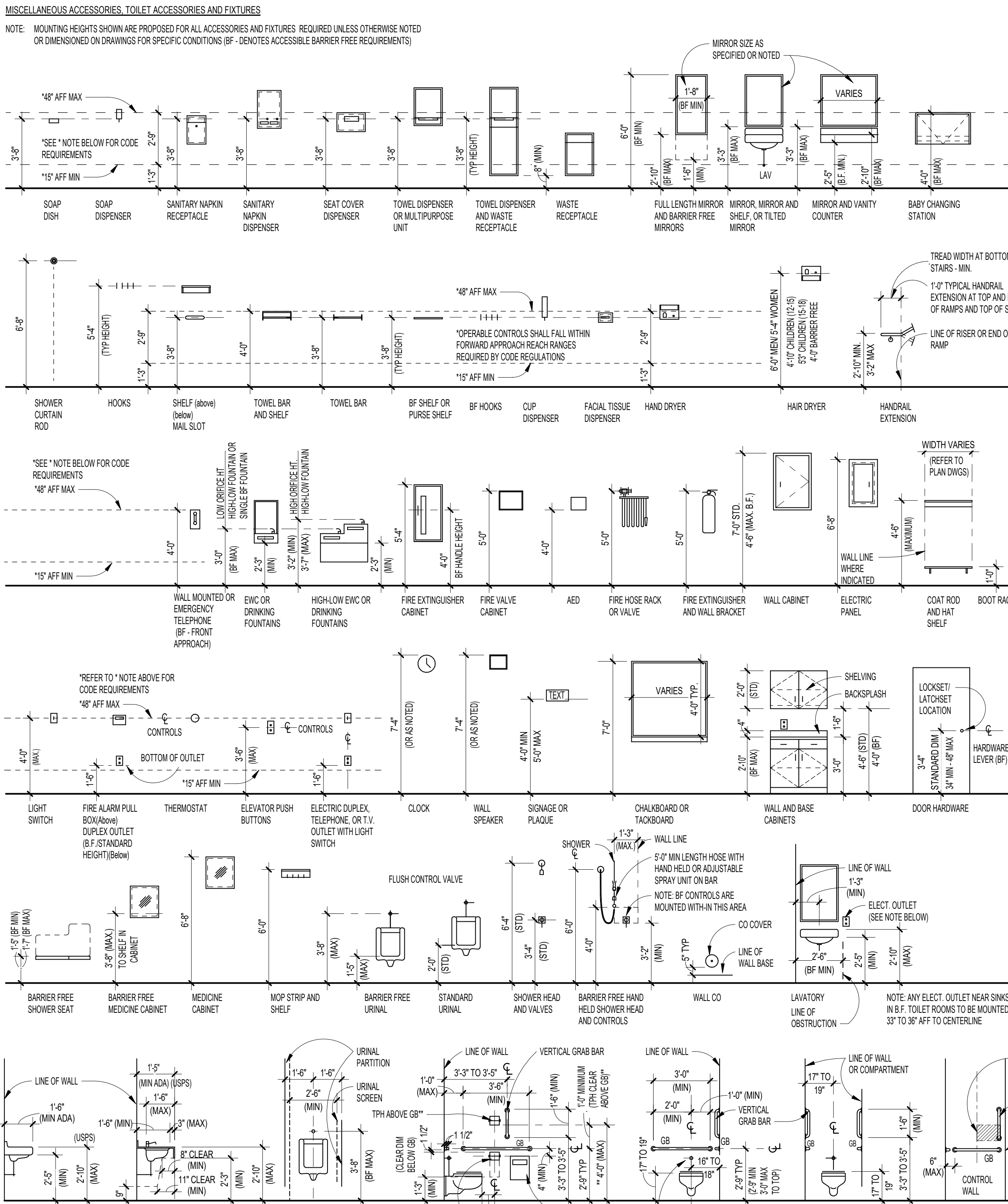


ABV	ABOVE
ABV	ABOVE FINISH FLOOR
ABF	ABOVE REFERENCE FLOOR
ABB	ABBRAVE
ABS	ABSORBING
ACC	ACCESS
ACC PNL	ACCESS PANEL
AC	ACOUSTIC/ACOUSTICAL
ACT	ACTUATOR
AC INSUL	ACOUSTIC INSULATION
ADD	ADDENDUM
ADON	ADDENDUM
ADONL	ADDITIONAL
ADH	ADHESIVE
ADJ	ADJUSTABLE
AGG	AGGREGATE
ACB	AIR CIRCUIT BREAKER
AC	AIR CONDITIONING
ACC	AIR CONDITIONING COMPRESSOR
AJU	AIR HANDLING UNIT
AU	AIR UNIT
ALT	ALTERNATE
ALUMAL	ALUMINUM
AMT	AMOUNT
AMP	AMPERE
AMPL	AMPLIFIER
ANCH	ANCHOR
ANB	ANCHOR BOLT
AND	AND
ANG1	ANGLE
AND2	ANGLED
APP	APPROVED
APPR	APPROXIMATE
ARCH	ARCHITECT/ARCHITECTURAL
ARCH	ARCHITECTURAL DRAWING-NO
AT	AT
ATM	AUTOMATIC TELLER MACHINE
ASPH	ASPHALT
ASSEMB	ASSEMBLY
AT	AT
AUTO	AUTOMATIC
GR	AUTOMATIC SPRINKLER RISER
AUX	AUXILIARY
AUG	AVERAGE
B	BACK-TO-BACK
BBD	BACK DROW/ PREVENTER
BP	BACK DRAFT DAMPER
BZF	BARBERS' FREE
BPR	BASE BOARD RADIATION
BBL	BASE PLATE
BAC	BASINMENT
B	BATH ROOM
BM	BEAM
BC	BACK OF CURB
BRG	BEARING
BR	BEDROOM
BM	BENCHMARK
BT	BEIT
BETW	BETWEEN
BEV	BEVEL
BT	BITUMINOUS
BI	BLACK IRON
BLK	BLACK
BK	BLOCK
BKG	BLOCKING
BO	BOARD
BLR	BOILER
BLR F	BOILER FEED
BLR H	BOILER HOUSE
BLR SH	BOILER SHUTTER
BS	BOTH SIDES
BSI	BOTH SAYS
BT	BOTTOM
BT EL	BOTTOM ELEVATION
BVO	BOULEVARD
BOU	BOUNDARY
BRKT	BRACKET
BR	BRASS
BRW	BREASHER
BRK	BRICK
BTU	BRITISH THERMAL UNIT
BRN	BRONZE
BLD	BUILDING
BLD	BUILDING LINE
BUR	BUILT UP ROOFING
BU	BULB
BUK	BULKHEAD
BULL	BULLETS
BULL	BURG-ALARM
C	CABINET
CAB	CABINET
CUH	CABINET UNIT HEATER
CAH	CAPACITY
CA	CAPET
CA	CARPET REDUCER STRIP
CSMT	CASMET
CSW	CASEWORK
CSG	CASING
CS	CAST IRON
CF	CAST IRON FRAME
CS	CAST IRON PIPECAST IN PLACE
CS	CASTING
CS	CATALOG NUMBER
CL	CATCH BASIN
CLG	CEILING
CLD	CEILING DIFFUSER
CLG HT	CEILING HEIGHT
CEM	CEMENT
CEM PLAS	CEMENT PLASTER
CC	CENTER-TO-CENTER
CC	CENTER
CH	CERAMIC TILE
CHD	CHANGING
CHD	CHANGING PLATE
CHD PL	CHILLED WATER RETURN
CHD	CHILLED WATER SUPPLY
CHD	CHORD
CH	CIRCUMFERENCE
CH	CIRCUMFERENTIAL
CHC	CIRCUIT
CHC	CIRCUIT BREAKER
CH	CIVIL DRAWING-NO
CL	CLASS
CLM	CLASSROOM
CL	CLEAN OUT
CLR	CLEAR
CL	CLEAR GLASS
CLR WGL	CLEAR WIRE GLASS
CL	CLOSE
CLD	CLOSURE
COEF	COEFFICIENT
CL	COLD WATER
CL	COLUMN
CL	COMPANY
COMP	COMPARTMENT
COMP	COMPOSITION
CA	COMPRESSED AIR
CH	COMPRESSOR
CH	CONCRETE
CH	CONCRETE MASONRY UNIT
CH	CONDENSING WATER RETURN
CH	CONDENSING WATER SUPPLY
CON	CONDUIT
CONF	CONFERENCE
CONN	CONNECT
CONST	CONSTRUCTION
CONT	CONTINUOUS JOINT
CONT	CONTINUE/CONTINUOUS
CONTR	CONTRACTOR
CONTR	CONTRACTOR PANEL
CONV	CONVEYOR
CONVYR	CONVEYOR
CCR	CORNER
CCR	CORNER GUARD
CCRR	CORRIDOR/CORRUGATED
CCR	COUNTER
CTR	COUNTER
CTSK	COUNTERSINK
CR	COURSE
CV	COVER
CV PL	COVER PLATE
CT	CURTAIN CURTAIN TRACK
CT	CURB FEET PER MINUTE
CT	CURB
CT	CURB VENT
CT	CUP DISPENSER
CYL	CYLINDER
CYC	CYCLES

DMRP	DAMPER
DMPPF	DAMPPOFFING
DM	DEAD
DE	DEADLE
D	DEEP
DOL	DOOR GLAZING
DWG	DRAWING
DMP PARTN	DEMOLITABLE PARTITION
DEPR	DEPARTMENT
DE	DEPRESSED
DES	DESIGN
DE	DESIGN
DE CO	DETENTION DETAIL
DAG	DIAAGONAL
DM	DIAMETER
DIF	DIFFUSER
DM	DIMENSION
DR	DINING ROOM
DIRC	DIRECTORY
DISC	DISCONNECT
DISCONT	DISCONTINUOUS
DSP	DISHWASHER
DSP	DISPENSER
DW	DISTANCE
DP	DISTO
DO	DITTO (DO OVER)
DW	DOOR DIVISION
DO	DOOR
DO	DOOR OPENING
DO	DOOR OPERATOR
DBL	DOUBLE
DO	DOUBLE ACTING
DH	DOWN
DWL	DOWEL
DN	DOWN
DS	DOWNSPOUT
DRN	DRAIN
DR	DRAIN TILE
DT	DRAIN TILE CONNECTOR
DWR	DRAWER
DF	DRINKING FOUNTAIN
DT	DRY DRAIN
DSP	DRY STAND PIPE
DWTR	DWAMPING
DDR	DUPPLICATE
DDR	DUTCH DOOR
E	
EA	EACH
EF	EACH FACE
EW	EAST
E	EAST
EFS	ENTRANCE INSULATION FINISH
E	
ELAST	ELASTOMERIC
ELAST FLASH	ELASTOMERIC FLASHING
EL	ELASTOMERIC WATERPROOFING
EER	ELASTOMERIC SHEET ROOFING
ELC	ELECTRICAL
ELC CAB	ELECTRICAL CABINET
EC	ELECTRICAL CONTRACTOR
ELC	ELECTRICAL CLOSET
EP	ELECTRICAL PANEL
EW	ELECTRICAL WATER COOLER
ELC OPER	ELECTRICALLY OPERATED
ELEV	ELEVATION
ELV	ELEVATOR
ENGR	EMERGENCY
ENC	ENCLOSURE
ENGR	ENGINEER
EE	END-TO-END
ENTER	ENTRANCE
EPDM	ETHYLENE PROPYLENE DIENE
E	
EQU	EQUAL
EQU	EQUIPMENT
EQUIV	EQUIVALENT
ESC	ESCALATOR
EST	ESTIMATE
EXD	EXCAVATED
EXH	EXHAUST
ED	EXHAUST DUCT
EX	EXHAUST FAN
EX	EXHAUST GRILLE
EXR	EXHAUST REGISTRATION
EXST	EXISTING
EXPB	EXPANSION
EXP	EXPANSION BOLT
EXP	EXPANSION JOINT
EXPLP	EXPLOSION PROOF
EXPND	EXPONDED
EXT	EXTENSION
EXT	EXTENSION CABINET
EXT	EXTERIOR
EH	EXTRA HEAD
EXT	EXTENDED
EXT	EXTERNAL STATIC PRESSURE
F	
FAB	FABRICATED/FABRIC
FF	FACE
FFH	FACE TO FACE
FFN	FAN COIL UNIT
FS	FAR SIDE
FS	FASTENER
FR	FEEDER
FT	FEETFOOT
FT	FEET PER MINUTE
FM	FENCE
FG	FOAM BOARD
FI	FIRE
FIN	FINISHING
FIN FLRF	FINISHED FLOOR
FR	FINNED TUBE RADIATION
FR	FIRE ALARM
FBACK	FIRE ALARM CONTROL PANEL
F	FIRE
FE	FIRE EXTINGUISHER
FEC	FIRE EXTINGUISHER CABINET
FI	FIRE HYDRANT
FI	FIRE LINE
FI	FIRE IRIDIANT/FIRE RATED
FRTRMD	FIRE RETARDANT TREATED WOOD
FI	FIRE VALVE
FI	FIRE VALVE CABINET
FI	FIREPLACE
FRFG	FIREPROOFING
FIXT	FIXTURE
FLSH	FLASHING
FMMS	FLAT HEAD MACHINE SCREW
FMMS	FLAT HEAD WOOD SCREW
FL	FLEXIBLE CONNECTION
FLR	FLOOR
FLR	FLOOR CLEAN OUT
FD	FLOOR DRAIN
FLR FN	FLOOR FINISH
FLUR	FLOOR FINISH
FLD	FLOWND
FIG	FOOTING
FMBD	FOAMBOARD
FN	FOUNDATION
FR	FRAME
FRCOV	FRAME AND COVER
FRMG	FRAMING
FR	FRAMING
FR	FRAMING
FUR	FIBERGLASS REINFORCED PLASTIC
F	FULL SIZE
FN	FURNISHING
FUR	FURNISHING/URNED
FUT	FUTURE
G	
GA	GALLON
GPH	GALLONS PER HOUR
GPH	GALLONS PER MINUTE
GALV	GALVANIZED
GALV I	GALVANIZED ZINC
G	GAS
GSKT	GASKET
G V B	GATE VALVE AND BOX
GENL	GENERAL
G	GLASS
GLZ	GLAZING
GHT	GLAZED HOLLOW TILE
GB	GRAB BAR
GB	GRADE/GRILLE
GB	GRADE BEAM
GRAT	GRATING
GL	GRID LINE
GRN	GRANITE
GS	GREASE SEPARATOR
G	GREASE TRAP
GRD	GROUND
G	GROUND FAULT INTERRUPTOR
GR	GROUT
G	GROUT CUTTER
GTP	GYPSPUM
GYPBD	GYPSPUM BOARD

HNDCP	HANDICAPPED
HR	HANDRAIL
HRB	HANDRAIL BRACKET
HOWE	HARDWARE
HDWD	HARDWOOD
HB	HEAD
HTC	HEAD TRUCK
HAGL	HEAT ABSORBING GLASS
HBRU	HEAT BRUSHING UNIT
HRT	HEATER
HVC	HEATING
HV	HEATING, VENTILATING, AND AIR CONDITIONING
HHWS	HEATING HOT WATER SUPPLY
HGT	HEIGHT
HGX	HEXAGON
HID	HIGH INTENSITY DISCHARGE
HP	HIGH POINT
HPS	HIGH PRESSURE
HSS	HIGH STRENGTH
HSSB	HIGH STRENGTH BOLT
HV	HIGH VELOCITY
HWY	HIGHWAY
HSTWY	HIGHWAY
HCB	HOLLOW CORE
HM	HOLLOW METAL
HYNCB	HYDRO-COMB
HRZ	HORIZONTAL
HP	HORNSPOON
HB	HOSE BIBB
HSP	HOSE STAND PIPE
HOS	HOSE VALVE CABINET
HOSP	HOT
HW	HOT WATER
HWRT	HOT WATER RETURN
HWRS	HOT WATER SUPPLY
HO	HOUR
HO	HUB OUTLET
HVD	HYDRAULIC
	HYDROGEN
I	
INCAD	IDENTIFICATION
IN OR *	INCHES
INC	INCINERATOR
INCL	INCLUDE / INCLUDING
IW	INDIRECT WASTE
INFO	INSIDE
I	INSIDE DIAMETER
IF	INSIDE FACE
INST	INSTALLATION
INSUL	INSULATION
INT	INTERIOR
INTER	INTERMEDIATE
INV	INVERT
IE	INVERT ELEVATION
J	
JC	JANITOR CLOSET
JT	JOINT
JST	JOIST
JB	JUNCTION
JR	JUROR
K	
KP	KICK PLATE
KV	KILOVOLT
KVA	KILOVOLT AMPERE
KW	KILOWATT
K	KIP (1000 LBS)
KIT	KITCHEN
KCS	KICK SPACE
KD	KNOCK DOWN
K	KNOCK-OUT PANEL
L	
LBL	LABEL
LAB	LABORATORY
LAD	LADDER
LAM	LAMINATE
LAM	LAMINATE/LAMINATED
LDG	LANDSCAPE
L	LANDSCAPE DRAWING-NOT
LG	LANDSCAPE
LH	LEFT HAND
LHRB	LEFT HAND REVERSE BEVEL
LGTH	LENGTH
LV	LEVEL
LB	LIBRARY
L	LIGHT
LPF	LIGHTFOOT
LTG	LIGHTING
L	LIGHTING PANEL
LRP	LIGHTING RECEPTACLE PANEL
LTWT	LIGHTWEIGHT
LTWT CONC	LIGHTWEIGHT CONCRETE
L	LIMESTONE
LTL	LINEAL
LNDFIFF	LINEAR DIFFUSER
L	LINEAR FEETFOOT
LN SD	LINEAR SLOPE DRAIN
L	LIQUID
LPG	LIQUID PROPANE GAS
LPG	LIQUID PETROLEUM GAS
L	LOAD
L	LIVING ROOM
LOC	LOCATION
LKR	LOCKER
L	LONG
LH	LONG LEG HORIZONTAL
L	LONG VERTICAL
L	LOUVER
L	LOUVER OPENING
L	LOW POINT
LPR	LOW PRESSURE
L	LUMBER
LS OR L	POUNDS
M	
MACH	MACHINE
MB	MACHINE BOLT
MACH RM	MACHINE ROOM
MDC	MANEULR AIR UNIT
MCP	MAIN DISTRIBUTION PANEL
MSB	MAIN SWITCH BOARD
MANH	MANHOLE
MFR	MANUFACTURER
MAR	MARBLE
M	MARK
MAS	MASONRY
MAS	MASONRY OPENING
M	MATERIAL
MX	MAXIMUM
MECH	MECHANICAL
M	MECHANICAL DRAWING-NOT
M	MEDICINE CABINET
MEM	MEMBRANE
MEMB	MEMBRANE
MET	METAL
MDS	METAL DIVIDER STRIP
MES	METAL EDGE STRIP
ML	METAL LATH
ML PLAS	METAL PLASTER
M	METAL THRESHOLD
MDT	METALLIC WATERPROOFING
MEZ	MEZZANINE
MEET	MICHIGAN DEPARTMENT OF TRANSPORTATION
M	MILWAUKEE
MN	MINIMAL
MNR	MIRROR
MSS	MIRROR AND SHELF
M	MOTOR OPERATED GATE
MLDS	MOLDING
MLD	MOUNTED
MTR	MOUNTING
MOV	MOVABLE
MOV PARTN	MOVABLE PARTITION
MULL	MULLION
	THOUSAND (1000)
N	
NAT	NATURAL
NS	NEAR SIDE
NEUT	NEUTRAL
NRC	NOISE REDUCTION COEFFICIENT
N	NOMINAL
NOR	NORMAL
N	NORTH
NOS	NOSING
NIC	NOT IN CONTRACT
NO OR #	NUMBER

OS	OBSCURE
OSGL	OBSCURE GLASS
OF	OFFICE
OC	ON CENTER
OPQ	OPAQUE
OPG	OPENING
OPER	OPERATOR
OPR	OPPOSITE
OPPHD	OPPOSITE HAND
ORIG	ORIGINAL
ORN	ORNAMENTAL
OZ	OUNCE
OU	OUT-TO-OUT
OA	OUTSIDE AIR
OD	OUTSIDE DIAMETER
OF	OUTFACING
OHS	OVAL HEAD SCREW
OA	OVERALL
OHD	OVERHEAD
ODMDR	OVERHEAD DOOR
OXY	OXYGEN
P	
PT	PAINTED
PR	PAIR
PG	PAGE
PNL	PANEL
PTWR	PAPER TOWEL DISPENSER
	PAPER TOWEL WASTE
PR	RECEPTACLE
PNG	PARKING
PBG	PARTICLE BOARD
PRN	PARTITION
PAS	PASSAGE
PAT	PATENT
PMT	PAVEMENT
PVC	PAVING
PERP	PEDESTAL
PERM	PERFORATED
PERM	PERMANENT
PERP	PERPENDICULAR
	PERM
PHOTO	PHOTOGRAPH
PH	PHYSICALLY HANDICAPPED
PCS	PIECE
PLAS	PIECES
PL	PLASTER
PLAM	PLASTIC LAMINATE
PLG	PLUG
PLGL	PLATE GLASS
PLAT	PLATTING
PLBG	PLUMBING
PLWD	PLYWOOD
PT	POINT
PT	POINT OF TANGENCY
PC	POINT OF CURVATURE
POL	POLISHED
PVC	POLYVINYLCHLORIDE
PORC	PORCELAIN
PORC ENM	PORCELAIN ENAMEL
POR	POROUS
PORT	PORTABLE
POST	POSTING
PV	POST INDICATOR VALVE
PS	POUNDS PER LINEAR FOOT
PS	POUNDS PER SQUARE FOOT
PS	POUNDS PER CUBIC FOOT
PCF	POUNDS PER CUBIC FOOT
PP	PURCHASE
PRE	PRECAST
PTR	PRECAST TERRAZZO RECEPTOR
PREFAB	PREFABRICATED
PR	PRESSURE
PTWD	PRESSURIZED TREATED WOOD
PR	PRESSURE GAUGE
PR	PRESSURE REDUCING VALVE
PR	PRIMARY
PROJ	PROJECT/PROPOSED
PROSP	PROPERTY PROPOSED
PL	PROPERTY LINE
PA	PRIVATE ADDRESS
PS	PURCHASE
PB	PUSH BUTTON
Q	
QTY	QUANTITY
QT	QUARTY TILE
QTR	QUARTER
QTR RD	QUARTER ROUND
R	
RB	RABBIT
RAC	RADIUS
RWC	RAIN WATER CONDUIT
R	RAILROAD
REC	RECEIVER/RECEIVING
RECP	RECEPTACLE
RP	RECEPTACLE PANEL
REC	RECESS
RECT	RECTANGLE/RECTANGULAR
RED	REDUCER
RND	REDUNDANT
REF	REFERENCE/REFERENCE
REFL	REFLECTED/REFLECTIVE
REFR	REFRIGERATOR
REIN	REGISTER
REIN	REGISTER/REINFORCING
REIN	REINFORCING
REM	REMOVABLE/REMOVABLE
RE	REPAIR
RE	REQUARED
RESIL	RESILIENT
RET	RETURN
PA	RETURN
RAF	RETURN AIR DIFFUSER
REV	REVERSE/REVERSE
R	REVOLUTIONS PER MINUTE
R	RISER
RH	RIGHT HAND
RHB	RIGHT HAND REVERSE BEVEL
R	RIGHT OF WAY
RVT	RIVET
RND	ROAD
R	ROLLING STEEL CURTAIN
RF	ROOF
RC	ROOF CONDUCTOR
RH	ROOF DRAIN
RH	ROOF HATCH
RS	ROOF RISE
R	ROOF VENTILATOR
RFG	ROOFING
RTU	ROOF TOP UNIT
R	ROOM
R	ROUND OPENING
RHDS	ROUND HEAD MACHINE SCREW
RHWS	ROUND HEAD WOOD SCREW
RT	RUBBER TILE
S	
SAN	SANITARY
SAN	SANITARY NAPKIN DISPENSER
SNR	SANITARY NAPKIN RECEPTACLE
SCHED	SCHEDULE
SC	SCHEDULE
STC	SEATING
SECT	SECTION
SEW	SERVICED
SS	SERVICE SINK
SHING	SHEATHING
S	SHEET
SHI MET	SHEET METAL
SHI & R	SHEET AND RAIL
S	SIGN
SCR	SHOWER CURTAIN ROD
SNR	SHOWER DRAIN
S	SIMILAR
S	SINGLE
S	SINK
SC	SOP DISPENSER
SO	SOLID CORE
SS	SOLID CORE
STC	SOUND TRANSMISSION CLASS
S	SOUTH
SP	SPACE
SPR	SPEAKER
SPR	SPEAKER
SPFC	SPECIFICATIONS
SD	SPLITTER DAMPER
SPRYD	SPRAYED
SPNR	SPRINKLER
S	SQUARE
SF	SQUARE FEET/SQUARE FOOT
STAG	STAGNANT
STSL	STAINLESS STEEL
STD	STANDARD

[illegible]

 TMP ARCHITECTURE INC 1911 WEST SQUARE LAKE ROAD BLOOMFIELD HILLS · MICHIGAN · 48302 PH · 248.338.4561 FX · 248.338.0223 EM · INFO@TMP-ARCHITECTURE.COM	
REGISTRATION SEAL	
CONSULTANT	
PROJECT TITLE NEW SMITH MIDDLE SCHOOL Bid Package No. 03C Troy School District Troy, Michigan	
DRAWING TITLE	

[illegible]

g:\2023\2023-0154-00\CAD\2023-0154-E5-1\11/13/2023 12:01:11 PM Rachel L. Wilson, None 0.09448, Peter Basso Associates Inc.

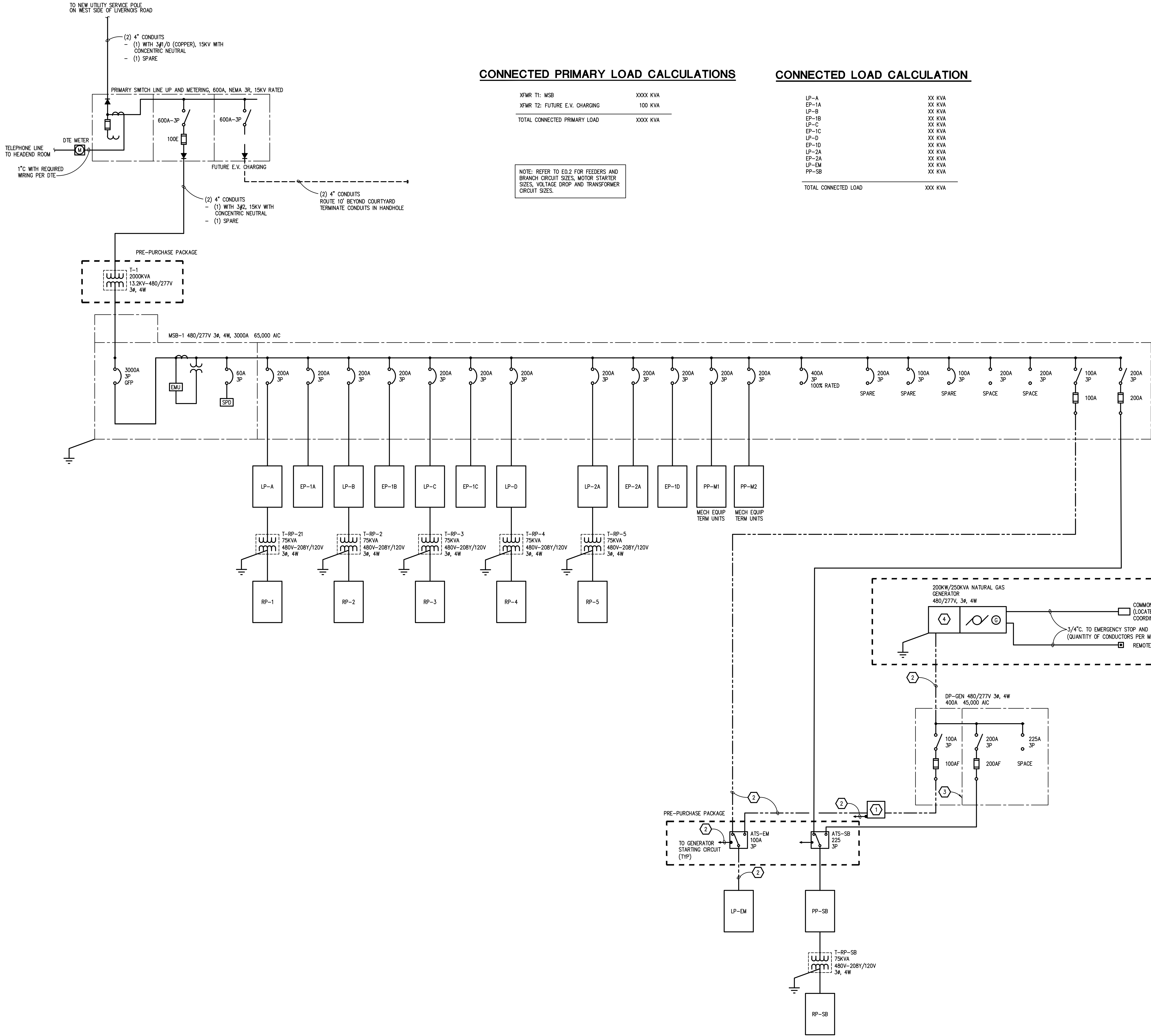


DIAGRAM GENERAL NOTES:

- THESE DRAWINGS REPRESENT THE GENERAL EXTENT AND ARRANGEMENT OF SYSTEMS. COORDINATE EXACT EQUIPMENT LOCATIONS, ELEVATIONS, AND FINAL CONNECTION REQUIREMENTS. PROVIDE EACH SYSTEM COMPLETE, INCLUDING ALL NECESSARY COMPONENTS, FITTINGS AND OFFSETS.
- FEEDER AND BRANCH CIRCUIT CONDUCTORS SHALL BE SIZED IN ACCORDANCE WITH THE "FEEDER AND BRANCH CIRCUIT SIZING SCHEDULE-GENERAL PURPOSE" ON THE "ELECTRICAL STANDARD SCHEDULES DRAWING" UNLESS SPECIFICALLY NOTED OTHERWISE.
- TRANSFORMER SECONDARY CONDUCTORS SHALL BE SIZED IN ACCORDANCE WITH THE "TRANSFORMER CIRCUIT SIZING SCHEDULE-GENERAL PURPOSE" ON THE "ELECTRICAL STANDARD SCHEDULES DRAWING" UNLESS SPECIFICALLY NOTED OTHERWISE.
- MOTOR CIRCUIT PROTECTION SHALL BE SIZED IN ACCORDANCE WITH THE MOTOR CIRCUIT SIZING SCHEDULES ON THE "ELECTRICAL STANDARD SCHEDULES DRAWING" UNLESS SPECIFICALLY NOTED OTHERWISE.
- BASIS OF DESIGN IS SQUARE D DISTRIBUTION EQUIPMENT AND ASCO TRANSFER SWITCHES. IF THE CONTRACTOR ELECTS TO PROVIDE EQUIPMENT FROM OTHER APPROVED MANUFACTURERS, THE CONTRACTOR SHALL BE RESPONSIBLE TO COORDINATE THE LAYOUT AND CLEARANCE REQUIREMENTS IN ALL SPACES CONTAINING ELECTRICAL EQUIPMENT AND PROVIDE EQUIPMENT MEETING THE SPECIFICATIONS AND ACHIEVING CODE REQUIRED CLEARANCES WITHIN THE SPACE PROVIDED.
- SELECTIVE COORDINATION (PER NEC ARTICLES 517.31(G), 700.32 AND 701.27) IS BASED ON SQUARE D DISTRIBUTION EQUIPMENT AND ASCO TRANSFER SWITCHES. ELECTRICAL CONTRACTOR SHALL SUBMIT SELECTIVE COORDINATION STUDY WITH TIME CURRENT CHARACTERISTIC CURVES (AND TABLES FOR TESTED PAIR INSTANTANEOUS COORDINATION) FOR THE EMERGENCY SYSTEMS. ELECTRICAL CONTRACTORS SHALL RECEIVE APPROVED SHOP DRAWINGS BACK FROM ENGINEER OF RECORD PRIOR TO PURCHASING OR INSTALLING ANY ELECTRICAL DISTRIBUTION EQUIPMENT. BREAKERS MUST BE COORDINATED WITH AUTOMATIC TRANSFER SWITCHES 3-CYCLE WITHSTAND RATING. ALTERNATE MANUFACTURERS SHALL MEET SELECTIVE COORDINATION CRITERIA AT NO ADDITIONAL COST TO THE PROJECT.
- VARIABLE FREQUENCY CONTROLLERS (VFC) FURNISHED BY MECHANICAL TRADES. ELECTRICAL CONTRACTOR SHALL INSTALL VFC, PROVIDE POWER FEEDER FROM DISTRIBUTION EQUIPMENT TO VFC AND PROVIDE POWER FEEDER FROM VFC TO MOTOR. REFER TO SPECIFICATIONS FOR APPLICATION OF VFC POWER CABLE FROM VFC TO MOTOR.



TMP ARCHITECTURE INC

1191 WEST SQUARE LAKE ROAD - BOX 289
BLOOMFIELD HILLS - MICHIGAN - 48302
PH: 248.338.4841 FX: 248.338.0023
EM: INFO@TMP-ARCHITECTURE.COM

REGISTRATION SEAL

CONSULTANT



PROJECT TITLE
**NEW SMITH
MIDDLE SCHOOL**
Bid Package No. 03C

Troy School District
Troy, Michigan

DRAWING TITLE
ONE LINE DIAGRAM

ISSUE DATES

11-14-2023 PRE-PURCHASE PACKAGE

DATE: ISSUED FOR:

DRAWN BAG

CHECKED BAG

APPROVED STP

PROJECT NO.

22102

DRAWING NO.

E5.1