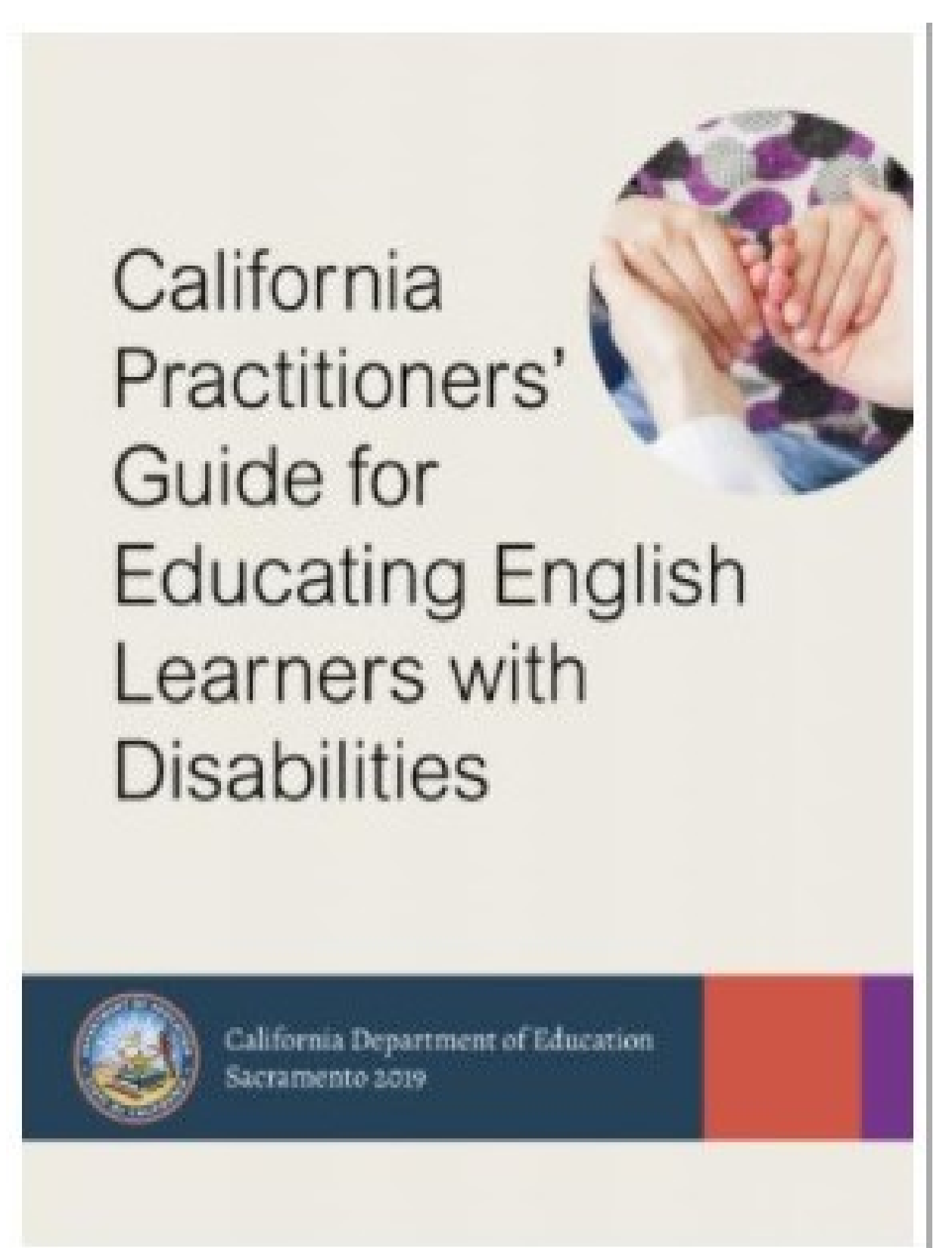


California System of Support:
SELPA Content Lead:

IMPROVING OUTCOMES FOR ENGLISH LEARNERS WITH DISABILITIES



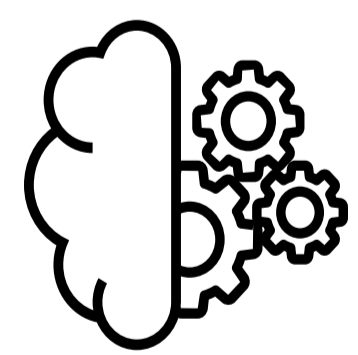
Imperial County SELPAs **Improving Outcomes for English Learners with Disabilities** project is focused on assisting CDE with dissemination of the CA Practitioners' Guide for Educating English Learners with Disabilities. Our primary charge is to build the capacity of SELPAs statewide and their respective COEs & LEAs in the implementation of best practices related to serving English Learners (ELs) with disabilities. Through this project, the Imperial County SELPA provides professional development and technical assistance to further the implementation of equitable and inclusive services in establishing a pathway to success for ELs with disabilities while facilitating connections between the systems improvement work. Our project supports a multidisciplinary team approach as an instrumental feature in the appropriate identification of services that address the unique language and learning needs of ELs with disabilities.

General overview

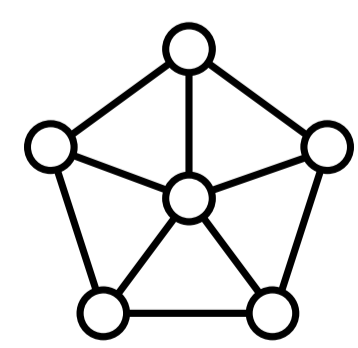
As partners in the CA System of Support, the Imperial County SELPA Improving Outcomes for ELs with Disabilities content-lead team provides the following types of assistance and support to SELPAs and their respective COEs & LEAs:



Connectors: Connect practitioners within SELPAs, COEs and LEAs to CDE & CCEE resources. Coordinate professional development to build understanding and linkages between the contents of the CA Practitioners' Guide for Educating ELs with Disabilities, the ELPAC, EL Roadmap, and ELD Standards to ensure access, equity and sound instructional practices for multilingual learners with disabilities.



Capacity building: Provide statewide live and virtual professional development events which are recorded and accessible via the SELPA webpage. These professional development sessions are designed and aligned to themes and topics within the CA Practitioners' Guide for Educating ELs with Disabilities.



Facilitators: Collaborate with experts in the field and coordinate professional development events that address key topics and areas of need identified by practitioners working to support EL-SWD. Some key topics include, but are not limited to needs assessment, Co-Teaching, literacy development, culturally & linguistically appropriate assessment and instructional practices.

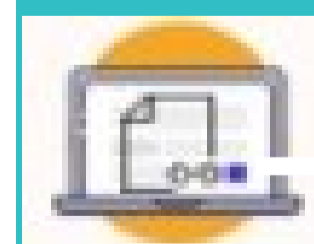


RESOURCES



<https://www.icoe.org/selpa/el-swd/resources>

Website Resources & Infographics



<https://www.icoe.org/selpa/el-swd/training-modules>

Recorded Training Modules



<https://www.icoe.org/selpa/el-swd/newsletter>

Newletters

**For more information, please visit our
website: <https://www.icoe.org/selpa/el-swd>**