



2023-24

Middle School Registration Guide

This document includes information about middle school and how to register for classes. If you have questions or would like more information, please call 763-391-7091

Este documento incluye información sobre la escuela intermedia y cómo registrarse para las clases. Si usted tiene preguntas o si desea más información, por favor llame al 763-315-7649.

Daim ntawv no muaj cov ntaub ntawv hais txog tsev kawm ntawv qib nrab (Middle School) thiab kev cuv npe rau cov chav kawm rau tom tsev kawm ntawv qib nrab (Middle School). Thov hu rau 763-569-7669 yog hais tias koj muaj lus nug lossis koj xav paub txog cov ntaub ntawv no ntau tshaj ntxiv.

Hồ sơ này bao gồm thông tin về các trường trung học và vấn đề đăng ký các lớp học tại các trường trung học. Xin vui lòng gọi 763-585-7319 nếu quý vị có thắc mắc hoặc nếu quý vị muốn biết thêm thông tin.

OSSEO AREA SCHOOLS

ISD  279

Table of Contents

Welcome!	3
Discover Middle School	4-5
Examine Interests	6-7
Sample Daily Schedule, List of Courses	8
Course Descriptions	9-18
Gifted Education and Differentiation	20-21
Transition to Middle School	22
Specialty-Themed (Magnet) School	23
Digital Learning for All	24
Get Involved	26



If you are considering open enrollment to a middle school other than your assigned attendance area school, apply for open enrollment and complete registration as if you were planning to attend your assigned school. If your application for open enrollment is approved, your course registration information will be transferred to your new school and any necessary adjustments to the schedule will be handled by your new school.

Welcome!

Dear Parents/Guardians,

Welcome to middle school in Osseo Area Schools! This guide will help you learn more about middle school and how we will help your student excel and thrive during these years of rapid physical, emotional, and intellectual growth.

The middle school years.

Voices are changing. Bodies are growing so fast that legs actually ache. Friendships come and go. These are the middle school years, and there's nowhere else our teachers would rather be than with your student on his/her middle school journey.

In middle school, young adolescent minds thrive on active, engaged learning. More hands-on learning with less lecture. Active discussion vs passive listening. Connecting classroom learning to real-life situations. Learning with student mobile device and other devices in ways that were inconceivable just a few years ago. Our middle school program is designed to keep young adolescents engaged and challenged; help them discover new interests; and support their intellectual, social and emotional growth.

We hope this guide will help you become familiar with the middle school program in Osseo Area Schools, and we look forward to welcoming you and your student next fall!



Kim Monette
Principal
Brooklyn
Middle School
763.569.7700



Patrick Smith
Principal
Maple Grove
Middle School
763.315.7600



Diana Bledsoe
Principal
North View
Middle School
763.585.7200



Brian Chance
Principal
Osseo
Middle School
763.391.8800



Kristen Swanson
Principal
Osseo Area
Learning Center
279Online
763.391.8890
763.391.8670

“Youth comes but once in a lifetime.”

— Henry Wadsworth Longfellow

Osseo Area Schools Middle Schools



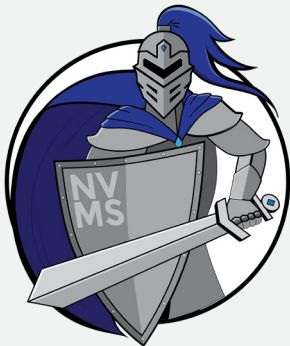
Brooklyn Middle School (BMS)

A Science, Technology, Engineering,
Arts and Math School (BMS)
7377 Noble Avenue North
Brooklyn Park, MN 55443
763.569.7700
School Mascot: Bulldog
School Colors: Red and Black



Maple Grove Middle School (MGMS)

7000 Hemlock Lane North
Maple Grove, MN 55369
763.315.7600
School Mascot: Mustang
School Colors: Blue and White



North View Middle School (NVMS)

5869 69th Avenue North
Brooklyn Park MN 55429
763.585.7200
School Mascot: Knight
School Colors: Blue and Silver



Osseo Middle School (OMS)

10223 93rd Avenue North
Osseo MN, 55369
763.391.8800
School Mascot: Oriole
School Colors: Orange and Black



279 Online

7300 Boone Ave. N.
Brooklyn Park, MN 55428
763.391.8670



Examine Interests

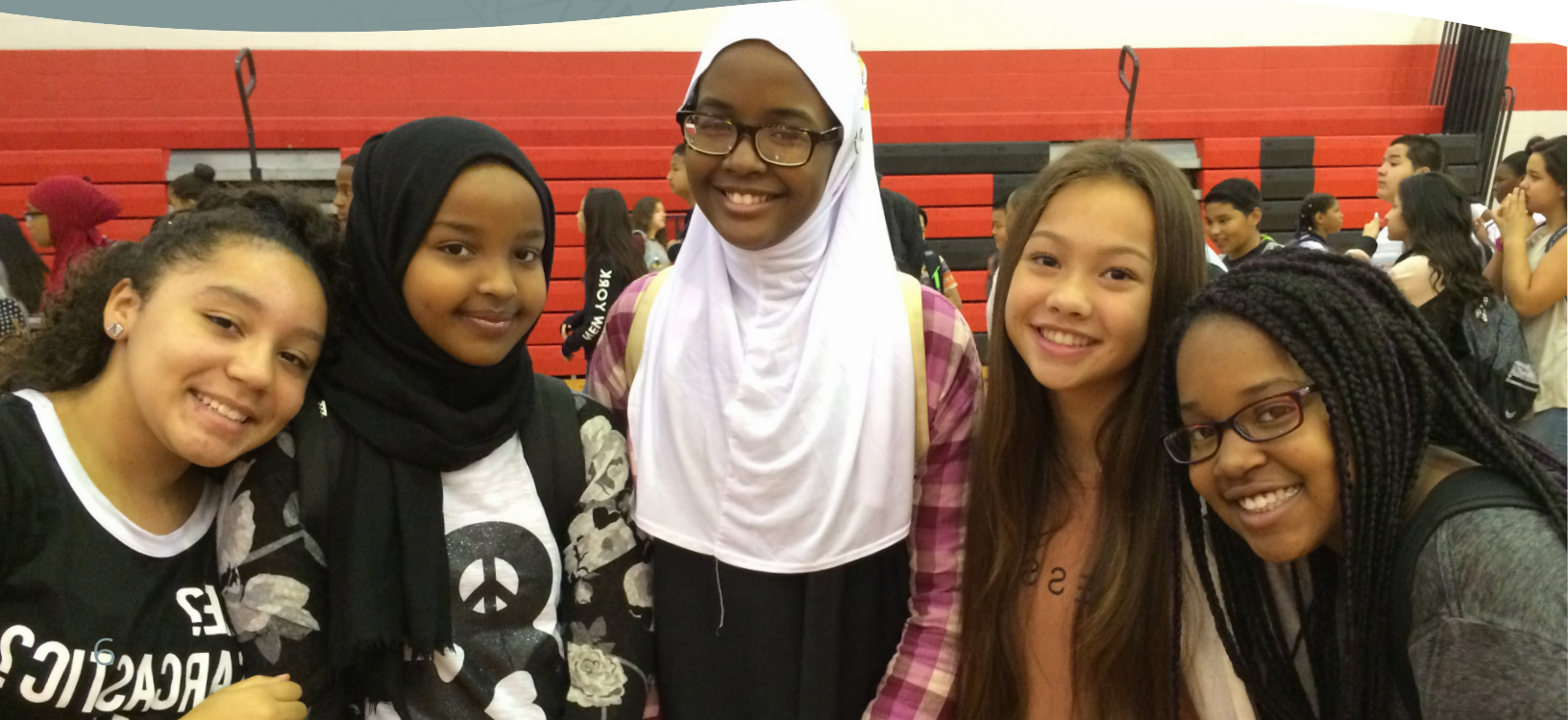
In middle school, students take required core subjects and elective courses. In sixth grade and seventh grade, the elective courses are designed to help students experience different subjects so they can identify interests for further study in eighth grade and in high school.

Required and Choice Elective Classes

Required elective classes are required elements of a middle school education so that students can gain exposure to a variety of new learning, experiences, and opportunities. Sixth-graders take required elective classes in art, music, physical education, and technology education/STEAM (Science Technology, Engineering, Arts & Mathematics). Seventh-graders take the required elective class Health & Wellness 7.

Choice elective classes are available in 7th and 8th grade. Students can choose to go deeper in the elective of their choice, including art, creative technology, family and consumer science, health and wellness, music, physical education, technology education/STEAM (Science, Technology, Engineering, Arts & Mathematics), and world language.

A basic overview of courses by grade appears on page 7. Please note that course options may vary slightly among schools, particularly in magnet schools.



Grade 6

Required

Advisory
English & Language Arts 6
Foundation of Algebra or Pre-Algebra
Earth Science 6
Minnesota Studies 6

Required Elective Courses

Physical Education 6
Choose a Music option:
 Introduction to Band
 Band
 Choir
 Making Music
 Introduction to Orchestra
 Orchestra
Art 6/Art STEAM 6
Gateway to Technology 6/Gateway to
Technology STEAM 6

Grade 7

Required

Advisory
English & Language Arts 7
Pre-Algebra, Linear Algebra, Algebra I
Life Science 7
US Studies 7

Required Electives**

Health & Wellness 7	Music
PE	Making Music
PE 7	Performance Choir
PE plus 7	Band 7
Competitive Sports	Choir 7
Dance	Orchestra 7
Individual Fitness	Introduction to Band
Nets and Racquets	Introduction to Orchestra
Recreational Sports	Solo Performance Lab
Unified PE	Unified Music
Visual Arts	FACS
Art 7	Intro to Design
Digital Arts 7	Artistic Foundations
Drawing	of Culinary Arts
Drawing and Painting	Unified Music
2-D Art	Tech Ed
Fiber Art	Creative Technology:
Painting	Design and Problem Solving
Sculpture	Project Lead the Way
3-D Art	

Choice Electives**

Intro to Spanish

****Offerings vary by site**

Grade 8

Required

Advisory
English & Language Arts 8
Linear Algebra, Algebra I, Non-Linear Algebra, Geometry
Physical Science 8
Global Studies 8

Required Electives**

PE	Music
PE 8	Making Music
PE plus 8	Performance Choir
Competitive Sports	Band 8
Dance	Choir 8
Individual Fitness	Orchestra 8
Nets and Racquets	Introduction to Band
Recreational Sports	Introduction to Orchestra
Unified PE	Solo Performance Lab
Visual Arts	Unified Music
Art 8	FACS
Ceramics 8	Intro to Design
Digital Arts 8	Artistic Foundations
Drawing	of Culinary Arts
Drawing and Painting	Tech Ed
2-D Art	Creative Technology:
Fiber Art	Innovation and
Painting	Multimedia Project Lead
Sculpture	the Way
3-D Art	

Choice Electives**

Hmong I
Spanish I
French I
Health 8

****Offerings vary by site**

Students in grades 6, 7, and 8 are required to take 2 arts courses (music, visual, or media arts) and one Physical Education course each year per MN Statute § 120A.22. Each middle school site offers different models and courses to meet this requirement.

Sample daily student schedule

6th Grade	7th Grade	8th Grade
Advisory	Advisory	Advisory
English & Language Arts 6	English & Language Arts 7	English & Language Arts 8
Math	Math	Math
Earth Science	Life Science 7	Earth Science 8
Minnesota Studies	US Studies 7	Global Studies 8
Lunch	Lunch	Lunch
Required Electives Music/PE Art/Tech	Required Electives Fine Arts Health PE Choice Electives: Vary by Site	Required Electives Fine Arts PE Choice Electives: Vary by Site

Course Selection Listed by Subject Area

ART

Art 6/Art STEAM 6
Art 7/Art STEAM 7
Digital Arts 7
Drawing
Drawing and Painting
2-D Art
Fiber Art
Painting
Sculpture
3-D Art
Art /Art STEAM 8
Ceramics 8
Digital Arts 8
Unified Art

ENGLISH & LANGUAGE ARTS

English & Language Arts 6
English & Language Arts 7
English & Language Arts 8

FAMILY & CONSUMER SCIENCES

Artistic Foundations of Culinary Arts
Family & Consumer Science 7
Family & Consumer Science 8
Intro to Design
Unified FACS

HEALTH

Health & Wellness 7
Health & Wellness 8

MATH

Foundations of Algebra
Pre-Algebra
Linear Algebra
Non-Linear Algebra
Algebra I
Geometry

MUSIC

Introduction to Band 6
Band 6
Choir 6
Making Music 6
Introduction to Orchestra 6
Orchestra 6
Making Music 7
Performance Choir
Band 7
Choir 7
Orchestra 7
Introduction to Band 7
Introduction to Orchestra 7
Making Music 8
Performance Choir
Band 8
Choir 8
Orchestra 8
Solo Performance Lab
Unified Music

PHYSICAL EDUCATION

Physical Education 7
Physical Education plus 7
Physical Education 8
Physical Education plus 8
Competitive Sports
Dance
Individual Fitness
Recreational Sports
Unified PE

SCIENCE

Earth Science 6
Life Science 7
Physical Science 8

SOCIAL STUDIES

Minnesota Studies 6
US Studies 7
Global Studies 8

TECHNOLOGY EDUCATION/STEAM

Project Lead the Way 6
Project Lead the Way 7
Project Lead the Way 8

WORLD LANGUAGES

French 1
Hmong 1
Intro to Spanish
Spanish 1

COURSE DESCRIPTIONS

ART

Art 6

Required Elective

This class explores fun opportunities in two- and three-dimensional art. Through hands-on activities, students experiment with drawing, clay/pottery, painting, printmaking, digital art, calligraphy and collage. By the end of this course, students will have gained an understanding of the elements of art and principles of design.

Art 7

Choice Elective

This class builds on the skills taught in Art 6 to create new and exciting opportunities in two and three-dimensional art. The hands-on course goes deeper into building techniques and methods with drawing, ceramics (clay/pottery), and painting. The learning outcome is to provide students with a broader understanding of the Elements of Art and the Principles of Design in works of art.

Art 7: 2-D Art

Choice Elective

This hands-on course goes deeper into the methods and the application of techniques with drawing, painting, and mixed media. The learning outcome is to provide students with a deeper understanding of the Elements of Art and the Principles of Design in works of art with artist expression and voice.

Digital Arts 7

Choice Elective

This course focuses on the processes behind the creation of digital arts, using knowledge and skills developed through the Elements of Art and the Principles of Design. Students will learn to create basic digital compositions by using universal digital tools in software programs. The learning outcome is to provide students with basic computer and software skills.

Art 8

Choice Elective

This course focuses on the processes behind the creation of art using knowledge and skills developed through the Elements of Art and the Principles of Design in Art 7. Students will apply two and three-dimensional media to develop their artistic voice and expression with taking creative risks and experimenting with new techniques in drawing, painting, and ceramics (clay/pottery). The learning outcome is to provide students with the foundation and confidence for a lifelong appreciation of the visual arts.

Artistic Foundations of Culinary Arts

Choice Elective

Artistic Foundations of Culinary Arts is a fine arts class that utilizes food as the main medium for experimental, interdisciplinary design. Students will learn and apply knowledge of colors, ingredient interpretation, mixing techniques and explore how art in the culinary form influences the lives, histories of students, local and global communities. Students will plan, design and sketch their creations using various mediums including 2D and 3D modeling programs (i.e. TinkerCAD), apply their knowledge of color in drawings, decorating and prototypes with feedback and explore cultural traditions and experiences. Production and presentation of their artistic works will be showcased through various methods utilizing multimodal perception, including storytelling, videography, and photography.

Intro into Design

Choice Elective

This is a project-based course for the creative student who wants to explore the application of design in their daily lives or as a career. Students will apply basic and complex color schemes and color theory to develop and enhance visual effects. You will learn and apply the knowledge of space, shape and form, line, texture, color basics, psychology of color, hue, value, intensity, pattern, contrast, color schemes, balance, rhythm and harmony as it relates to fashion and interior design. In this course, students will obtain a foundation in the knowledge of the visual arts needed for more advanced studies of fashion, textiles, or interior design.



Drawing

Choice Elective

Students will develop creative and technical skills with emphasis on the elements of art and principles of design. A strong emphasis will be placed on the development of observational drawing. Students will explore a variety of drawing media and develop a process portfolio of artwork.

Drawing & Painting

Choice Elective

Drawing is the basis of all art forms. The skills of sketching, contour drawing, shading, color blending will inform your paintings. Subjects will include drawing or painting portraits, landscapes, still life and from your imagination. Students will present their work, respond to work created by artists and classmates, and create connections to cultural, historical, and personal experiences.

Art 8: 2-D Art

Choice elective

This hands-on course goes deeper into the methods and the application of techniques with drawing, painting, and mixed media. The learning outcome is to provide students with a deeper understanding of the Elements of Art and the Principles of Design in works of art with artist expression and voice.

Fiber Art

Choice elective

This course is an exploration of fiber arts. Fiber arts includes weaving using yarn, felting wool, dyeing and printing on fabric, making paper and marbling the surface of paper, basketry, and book making. Students will present their work, respond to work created by artists and classmates, and create connections to cultural, historical, and personal experiences.

Painting

Choice elective

Students will use a variety of painting methods and media (tempera, watercolor, acrylic and oil) to apply the elements of art and the principles of design in their artwork. Emphasis in this course will be for students to gain insight and experience with the unique qualities and technical skills involved with each paint media.

Students will begin to develop skills in assessing their artwork and understanding the historical relevance of painting in addition to developing a portfolio.

Sculpture

Choice elective

In this course students will create original artworks through the use of clay, wood, metal, papier mache, found objects, and plaster. Students will present their work, respond to work created by artists and classmates, and create connections to cultural, historical, and personal experiences.

3-D Art

Choice elective

Students will engage in creative and personally driven 3-dimensional art projects through use of the Elements of Art: line, shape, color, texture, form, space and value. Students will learn to organize the elements with balance, rhythm, contrast, emphasis and other Principles of Design. Students will explore materials such as recycled materials, cardboard, plaster, wire and clay.

Digital Arts 8

Choice elective

This course focuses on the processes behind the creation of digital arts, using knowledge and skills developed through the Elements of Art and the Principles of Design. This course also builds upon knowledge and skill sets learned from Digital Arts 7. The course work focuses on the creation of animations, digital illustrations, and graphic design, which offers more complex forms of digital art. The learning outcome is to explore student interests in the realm of digital arts.

Ceramics 8

Choice elective

This course focuses on hand-built pottery techniques to include pinch, coil and slab construction with clay. Applied finishes will include surface applications, glazing, and decorative elements with a deeper understanding of aesthetics in three-dimensional works of art. The learning outcome is for decorative and functional ceramics with the applied knowledge and skills of the Elements of Art and the Principles of Design.

Unified Art

Choice elective

This course combines students with and without disabilities together as creative problem solvers. In this class students will explore and develop their artistic skills, develop self-advocacy and interpersonal skills, such as building friendships, social communication, and other life skills. Students will challenge existing stereotypes about people with disabilities by learning to problem-solve in unison for the purpose of achieving success on a variety of tasks with a shared visual language. Students will have the opportunity to gain exposure to various art forms and engage in a collaborative process to critique and refine their work. Unified Art will provide a welcoming environment for all students to help empower them to reach their full potential and help create a more inclusive and accepting school environment for all students.

Offered at BMS and MGMS

AVID

AVID Launch

Choice elective

AVID Launch is an introduction to middle school. Students learn strategies for being a successful student such as organization, time management, and study skills. AVID Launch is a fun, rigorous, and collaborative environment that supports students in their transition from elementary to secondary school.

ENGLISH & LANGUAGE ARTS

English & Language Arts 6

Language

Required

Students focus on developing and strengthening skills in writing, reading, speaking, listening, and thinking. Students will analyze text to determine meaning and cite evidence from texts to support analysis. Students will use the writing process to create informational and narrative compositions. Students will study vocabulary and grammar.

English & Language Arts 7 Language

Required

This course stresses sentence and paragraph writing in composition, study of short stories and novels in literature, independent reading, reference skills, spelling, grammar, and usage. Students gain critical and creative writing skills. Group and individual projects throughout the year focus on writing, research, and speaking.

English & Language Arts 8 Language

Required

This course emphasizes paragraph writing in composition, short stories and novels in literature, independent reading, research skills and language development centered on spelling, vocabulary, and grammar. Literature is explored in-depth with an emphasis on comprehending and interpreting what authors have communicated. Students gain critical and creative thinking skills, as well as writing, research, and speaking skills. Individual and group projects occur throughout the year.

FAMILY & CONSUMER SCIENCES

Family & Consumer Sciences 7

Choice Elective

Enjoy making things? In this yearlong class, students explore a variety of topics, including food preparation, nutrition, career exploration, understanding personal purchases, financial literacy, growth and development of children, and a design project. Students learn the basics of cooking and work in small group cooking labs. Students learn how to become informed and responsible lifelong learners who are able to make healthy decisions regarding diet, fitness and lifestyle. Students also investigate the exciting world of careers.

Family & Consumer Sciences 8

Choice Elective

Want to do a little of everything? From children to food and design

to money, this project based course gives students more practice with skills that help daily life and lead to success in the workplace. Students will explore design, personal financial responsibility, and the science behind food preparation. Students will work collaboratively to make floor plans, develop financial awareness and prepare delicious healthy foods. Exploring careers and occupational pathways are woven into this fun and fast-paced curriculum.

Intro into Culinary Arts 8

Choice Elective

Students will be learning how to prepare, safely handle, cook and taste scratch-made food with inspiration from cultures around the world. Students will be involved in preparing a menu and hosting an event to present their learning in a restaurant type format; they will act as hosts, servers and chefs for parents and the community during school and district events.

Unified FACS

Choice Elective

This course combines students with and without disabilities to develop their kitchen basics and food preparation skills, while developing self-advocacy and interpersonal skills, such as building friendships, social communication, and other life skills. Students will study nutrition, wellness, food choices, and consumer skills. Students will challenge existing stereotypes about people with disabilities by learning to problem-solve in unison for the purpose of achieving success on a variety of tasks. Unified FACS will provide a welcoming environment for all students to help empower them to reach their full potential and help create a more inclusive and accepting school environment for all students.

Offered at BMS and MGMS

HEALTH

Health and Wellness 7

Required Elective

This course empowers students to make healthy decisions that influence self, family and community. Students are given opportunities to enhance and explore their health within the context of the following

topics: introduction to health, decision making and goal setting, safety and injury/violence prevention; substance use/abuse; personal health / nutrition / fitness; community / consumer health; social/mental / emotional health; disease prevention / HIV-AIDS; and basic family life.

Health and Wellness 8

Choice Elective

Students learn and apply strategies that will enhance their ability to make healthy choices and reach optimal lifelong health. Students are taught the following units: sports nutrition (focusing on enhancing athletic performance), prevention and treatment of sports injuries, basic first aid, and American Red Cross CPR/AED training and certification. The specific unit on sex education is taught on a dual track: abstinence until marriage or abstinence as the best choice for teens. Prior to that unit being taught, parents/guardians will receive information about the content of each track so they can choose which one is right for their student. Students will also be given the opportunity to take part in community service learning.

MATH

Foundations of Algebra

6th grade: Required

Students will use positive and negative integers, rational numbers and algebraic properties to solve problems. Students will use mean, median and range to display, interpret data and calculate probability. Other topics include ratio, measurement, scale, translations, reflections, and probability.

Pre-Algebra

6th grade: Students should seek advice from current teacher before registering for this class

7th grade: Required

This course builds skills for rational numbers and their operations and their algebraic representations. Topics from math strands such as measurement conversions, area, averages, and data displays are introduced in this course. Other topics include equations and functions, geometry, square roots, and probability.

Linear Algebra

7th grade: Students should seek advice from current teacher before registering for this class

8th grade: Required

This course provides a strong foundation in linear algebra and builds skills for rational numbers and their operations, equations, and inequalities. Topics include understanding expressions, equations, and function notation. Linear equations, linear functions, linear inequalities, and graphing will be covered in depth.

Non-Linear Algebra

8th grade: Students should seek advice from current teacher before registering for this class;

This course revisits linear functions and introduces quadratic, exponential (and rational) function families. Students explore functions in tabular, algebraic, and graphical forms. Students write and solve algebraic and application problems. Additional topics include statistics and probability.

Algebra 1

7th grade: Students should seek advice from current teacher before registering for this class;

This class is organized around families of functions, with a special emphasis on linear and quadratic functions. Algebra 1 may include lessons on probability, data analysis, and geometry.

MUSIC

6th-graders are required to choose one music elective.

Intro to Band 6

Required Elective

Intro to Band 6 is for students who did not take band in grade 5. Students learn the beginning elements of playing a woodwind or brass instrument. Students meet



every other day and are expected to perform at evening concerts during the year. Upon completion of this course, students are ready to enroll in Band 7.

Band 6

Required Elective

In Band 6, students meet in class every other day. You can expect your performance skills (individually and as an ensemble) and musical knowledge to grow quickly! Band 6 musicians are required to perform in two evening concerts during the year. Prerequisite: Completion of Band 5 or audition with the band director.

Choir 6

Required Elective

6th grade choir is for students who enjoy singing in an ensemble! Choir classes meet every other day, and students can expect their performance skills and musical knowledge to grow quickly. A variety of music will be performed. All Choir 6 musicians are required to perform two evening concerts during the year.

Making Music 6

Required Elective

What role does music play in our lives and in the lives of those around us? While learning the answers to these questions,

students also experience making music in many ways. This course is for students not participating in one of the performance classes (choir, band, or orchestra).

Note: Open to grades 6-9 at 279Online

Note: Not offered at BMS

Intro to Orchestra 6

Required Elective

Intro to Orchestra 6 is for students who did not take orchestra in grade 5. Students learn the beginning elements of playing an orchestra instrument: violin, viola, cello or bass. Students meet every other day and are required to perform at evening concerts during the year. Upon completion of this course, students are ready to enroll in Orchestra 7.

Orchestra 6

Required Elective

In this every-other-day class, students can expect their performance skills (individually and as an ensemble) and musical knowledge to grow quickly! These musicians perform two evening concerts during the year and participation in these concerts is required. Prerequisite: Completion of Orchestra 5 or audition with the orchestra director.

Intro to Band 7

Choice Elective

Intro to Band 7 is for students who did not take band in grade 5 or 6. Students learn the beginning elements of playing a woodwind or brass instrument. Because this class meets every day, students can expect to learn playing skills at an accelerated level. Intro to Band 7 musicians are required to perform at evening concerts during the year. Upon completion of this course, students are ready to enroll in Band 8.

Band 7

Choice Elective

In Band 7, students continue their individual and ensemble musical growth. Band 7 students are required to perform two evening concerts during the year. Prerequisite: Completion of Band 6, Intro to Band 6 or audition with the band director.

Choir 7

Choice Elective

7th grade choir is for students who enjoy singing. In this class, students continue to develop their individual and ensemble vocal skills. A variety of music is performed. All Choir 7 musicians are required to perform two evening concerts during the year.

Intro to Orchestra 7

Choice Elective

Intro to Orchestra 7 is for students who did not take orchestra in grade 5 or 6. Students will learn the beginning elements of playing an orchestra instrument: violin, viola, cello or bass. Because this class meets every day, students can expect to learn playing skills at an accelerated level. Students are required to perform at evening concerts during the year. Upon completion of this course, students are ready to enroll in Orchestra 8.

Orchestra 7

Choice Elective

In Orchestra 7, students continue their individual and ensemble musical growth. This ensemble performs two evening concerts during the year and participation in these concerts is required. Prerequisite: Completion of Orchestra 6, Intro to Orchestra 6 or audition with the orchestra director.

Making Music 7/8

Choice Elective

What role does music play in our lives and in the lives of those around us? While learning the answers to these questions, students also experience making music in many ways. This 7-8gr course does a deeper dive into

some of the hands-on units from the 6th grade Making Music course. ANY student can take this 1 Trimester course, even if they are also participating in one of the performance classes (choir, band, or orchestra) and regardless if they took Making Music in 6th grade.

Note: Not offered at BMS

Solo Performance Lab

Choice Elective

Students will develop their solo and small ensemble performance skills as a musician. In this course, students receive ongoing and individual coaching to further develop their practicing, rehearsal and performance skills.

Band 8

Choice Elective

As your skills develop, so does the satisfaction you gain from playing your instrument! In daily band rehearsals, students learn more advanced playing techniques and expand their knowledge of music and music theory. The band performs several evening concerts throughout the year and participation in these concerts is required. Prerequisite: Completion of Band 7, Intro to Band 7 or audition with the band director.



Choir 8

Choice Elective

As your vocal skills develop, so does the satisfaction you gain from singing in an ensemble. This choir is for all students who enjoy singing! Students are exposed to a variety of music. They continue to develop performance skills and expand their knowledge of music and music theory. The choir performs several evening concerts throughout the year and participation in these concerts is required.

Orchestra 8

Choice Elective

As your skills develop, so does the satisfaction you gain from playing your instrument. Students learn more advanced playing techniques and expand their knowledge of music and music theory. The orchestra performs several evening concerts throughout the year and participation in these concerts is required. Prerequisite: Completion of Orchestra 7, Intro to Orchestra 7 or audition with the orchestra director.

Performance Choir

In this class students will express themselves and their creativity by singing and dancing in a group. The choreography (dancing) will be created and taught by students in the class. Students will perform several times throughout the year. This class will strive for artistic excellence

Unified Music

This course combines students with and without disabilities to develop their basic music skills, while building self-advocacy and interpersonal skills, such as building friendships, social communication, and other life skills. Students will explore various methods of making music in a collaborative environment. Students will challenge existing stereotypes

about people with disabilities by learning to problem-solve in unison for the purpose of achieving success on a variety of tasks. Unified Music will provide a welcoming environment for all students to help empower them to reach their full potential and help create a more inclusive and accepting school environment for all students.

Offered at BMS and MGMS

PHYSICAL EDUCATION

Physical Education 6

Required Elective

This activity-based course is organized around the movement themes of body control, fitness, propelling, receiving, and striking. The emphasis is on fundamentals, rules, strategies and individual physical fitness. A high level of participation is expected, and students are required to change into appropriate clothing for participation. Activities may include basketball, soccer, volleyball, tennis, badminton, cooperative games, table tennis, fitness training, swimming and other indoor/outdoor activities.

Physical Education 7

Choice Elective

This activity-based course is organized around an active and healthy lifestyle. The emphasis is on fundamentals, rules, strategies and individual physical fitness. Activities may include, team/individual games, cooperative games, fitness training, swimming and other indoor/outdoor activities. A high level of participation is expected, and students are required to change into appropriate clothing for participation.

Physical Education 7 PLUS

Choice Elective

This course promotes an active and healthy lifestyle with a focus on cardiovascular fitness, weight training, and being physically active. Additional activities may include individual/team sports, cooperative games, fitness training, swimming, and other indoor/outdoor activities. A high level of participation is expected, and students are required to change into appropriate clothing for participation.

Physical Education 8

Choice Elective

This course provides students with the skills, knowledge, and attitudes needed for an active lifestyle. The goal is to introduce students to as many activities as possible so they will remain active and healthy throughout their lifetime. Activities may include, team/individual sports, cooperative games, fitness training, swimming, and other indoor/outdoor activities. A high level of participation is expected, and students are required to change into appropriate clothing for participation.



Physical Education 8 PLUS

Choice Elective

This course promotes an active lifestyle for all students. Student learn and practice the skills, knowledge and attitudes needed for an active lifestyle with a focus on cardiovascular fitness, weight training, and being physically active. Additionally, students will be physically active in many activities that may include team/individual sports, cooperative games, fitness training, swimming, and other indoor/outdoor activities.

Competitive Sports

Choice Elective

This course is for the higher skilled player who wants to participate at a competitive level. Activities may include but are not limited: to football, basketball, volleyball, badminton, soccer, hockey, and other team and individual games. Students are required to change into clothing for active participation.

Dance

Choice Elective

Students in 7th and 8th grade have the unique opportunity to enroll in a dance focused physical education course. Dancers will enhance their anatomical awareness, physical well-being, body articulation, creative expression, and cultural appreciation by diving into a variety of styles including urban dance, hip-hop, contemporary, improvisation, and individualized choreography. Students will utilize teacher choreographed dances, as well as self-expression through solo and small group student-choreographed dances.. This dance course, like a general physical education course, will focus on physical, mental, and social well-being, with the additional experience to express personal emotions and feelings through movement to an audience.

Individual Fitness

Choice Elective

Individual Fitness is geared toward students who want to participate in lifelong activities like those offered in popular health clubs. Course activities may include but are not limited to jump rope, Yoga, HIIT, dance and fitness testing. Students are required to change into appropriate clothing for active participation.

Nets and Racquets

Choice Elective

Students will be introduced to basic striking skills used in a variety of sports and activities using a racquet and/ or net. Beginning strategies, decision making, rules, fitness and competencies will be integrated into a game situation. Activities may include but are not limited: tennis, volleyball, badminton, pickleball, etc. Students are required to change into clothing for active participation.

Recreational Sports

Choice Elective

This course provides students with the skills, knowledge, and attitudes needed for an active lifestyle. The goal is to introduce students to as many recreation games as possible so they will remain active and healthy throughout their lifetime. The course focus is on active participation, fundamentals, strategies, rules, game etiquette

and sportsmanship. Activities may include but are not limited to 4 square, Kan Jam, cornhole, bocce ball, bowling, ping-pong, and spike ball. Students are required to change into appropriate clothing for participation.

Unified PE

Choice Elective

This course combines General Education and Adapted Physical Education students and allows them to improve their performance of self and others in recreational and fitness activities. This course combines students of all abilities to participate in developmentally appropriate activities including lifetime activities, physical fitness, and team sports. Students will work together to increase competence and confidence in a variety of physical activities. Through ongoing leadership opportunities members of this course will be empowered to help create a more inclusive and accepting school environment for all students.

Offered at BMS and MGMS



SCIENCE

Earth Science 6

Required

Using the lens of discovery through astronomy, physical and historical geology, human impacts, and meteorology, students will develop scientific literacy skills. Students work with scientific equipment in various settings throughout the course. Methods of study will emphasize creative problem solving, observation, communication skills, and analysis among other cross-cutting concepts.

Life Science 7

Required

Through scientific collaboration, students will explore heredity & traits, interactions & energy in ecosystems, molecular & organism structures, and development of organisms & diversity. Students will use science and engineering practices to investigate the natural world and design and build systems related to the above core ideas.

Physical Science 8

Required

Student scientists will explore energy, matter & interactions, motion & forces, and waves. Students will use scientific thinking and processing to explore relevant topics. Focus will be on student ability to process, communicate, and use scientific information acquired through observation, experimentation, and research.

SOCIAL STUDIES

Minnesota Studies 6

Required

Students will expand their understanding of Minnesota history by exploring the geographical and historical developments in our state. Students will learn how

individuals, groups, and events have shaped the state's history. They will analyze the interaction among the various cultures, emphasizing their contributions to society. Minnesota's role and connection to national and international events will be explored. Students will also learn basic concepts of government and personal finance.

US Studies 7

Required

Students will survey the development of the United States through history from the 1800s to the present while integrating government, geography, and economic concepts. This course will include critical analysis of primary and secondary resources along with in depth research of historical topics.

Global Studies 8

Required

Students will be introduced to cultures and civilizations throughout the world from ancient to modern times. Students will explore world geography as it affects the cultures and civilizations covered in this course. They will analyze connections between revolutions, independence movements, and social transformations, and understand reasons for the creation of modern nation states. Students will be involved in civic discussions on contemporary issues, research, group and individual problem solving, simulations, and a variety of critical and logical thinking activities.

TECHNOLOGY EDUCATION/STEAM

Gateway to Technology 6 Gateway to Technology 6 STEAM at BMS

Required Elective

Gateway to Technology 6 is a hands-on, lab-based, Project Lead the Way course where students use a variety of tools as they learn about the design process to solve problems and understand the influence of creative and innovative design on our lives. Students learn and recognize the value of an engineering notebook to document and capture their ideas. Students use industry standard 3D modeling software to create a virtual image of their designs and produce a portfolio to showcase their creative solutions. Materials safety, the use of tools and machines, and the principles of design are focuses of study. The course curriculum meets national STEM standards and integrates age-appropriate knowledge with developing STEAM awareness.

Gateway to Technology 7 Gateway to Technology 7 STEAM at BMS

Choice Elective

Gateway to Technology 7 is a hands-on, lab-based, Project Lead the Way course that provides project-based learning – a hands-on approach – that is exciting and challenging for a wide range of students. The curriculum relates technology to students' daily lives. It promotes communication and collaboration by emphasizing a teaming approach. Through this approach, students use their strengths to accomplish project goals while learning challenges at all ability levels. The course curriculum meets national standards and integrates age-appropriate knowledge with developing STEAM awareness.

Gateway to Technology 8 Gateway to Technology 8 STEAM at BMS

Choice Elective

In this hands-on, lab-based, Project Lead the Way course, students deepen understanding of engineering technologies. Students gain knowledge and skills to experience industry standard production technologies through hands-on experiences. Students use tools and machines and practice using the principles of design. The course curriculum meets national standards and integrates age-appropriate knowledge with developing STEAM awareness.

Creative Technology: Design and Problem Solving

(Gr 7 and 8 only)

Choice Elective

Note: This course is offered every other year, alternating with Creative Technology: Innovation and Multimedia.

Creative Technology: Design & Problem Solving explores the principles of design through the design cycle. Students will engage in different activities using digital technologies in order to create solutions to complex problems. In addition to developing specialist skills, students will have the opportunity to work collaboratively with peers in other creative and technical areas. The goal of this course requires project-based work across core subject areas, leading students to develop flexible creative and technical skills which will prepare them for their future.

Creative Technology: Innovation and Multimedia

(Gr 7 and 8 only)

Choice Elective

Note: This course is offered every other year, alternating with

Creative Technology: Design and Problem Solving.

Students will explore the principles of innovation and problem solving through the design cycle. They will engage in a variety of activities using digital technologies in order to create solutions to complex problems. Students will use digital multimedia tools, such as Photoshop, Inventor and iMovie to create products and solutions for a variety of complex problems.

WORLD LANGUAGES

French 1 *(Gr 8 only)*

Choice Elective

French 1 introduces students to communicating in French and becoming familiar with French-speaking cultures. Students receive instruction in all of the French Level 1 standards. The main linguistic goal is to achieve some degree of comfort with spoken French. The course also includes an initial familiarization with French written materials. Students explore the role of culture by learning about themselves and others as cultural beings.

Important note: Students planning on attending a postsecondary institution are strongly encouraged

to continue the French course sequence by participating in French 2, 3, 4, and beyond during their high school experience.

Hmong 1

Choice Elective

This Hmong 1 course is for scholars who would like to learn the Hmong language, but have no prior experiences. Hmong 1 focuses on the development of oral language and literacy skills. Students will converse in Hmong about various basic topics. Classroom instructions will be in various dialects of the Hmong Language introducing students to phonic sounds, consonants, and tones. Students compose sentences and short paragraphs in Hmong. Students will also practice language skills, spelling grammar and vocabulary development. Students will engage in whole class, small group, and individual activities designed to develop language, study historic language and contemporary Hmong history and culture, and create theme-based projects centered around student strength.



Intro to Spanish

Required for 6th grade at OMS

Choice Elective

Learners will build, reinforce, and expand their knowledge of diverse perspectives through an introduction to the Spanish language and its cultures. Students will learn to share simple information about themselves and others verbally and in writing. They'll also learn to read short stories or articles in Spanish. Students will engage with peers and their learning via a variety of games and other interactive activities. Students gain a foundation to build on in Spanish 1 (a year-long course offered to 8th graders, where they may attain high school credit). Intro to Spanish is not required to take Spanish 1.

Spanish 1 *(Gr 8 only)*

Choice Elective

Spanish 1 introduces students to communicating in Spanish and becoming familiar with Spanish-speaking cultures. Students receive instruction in all of the Spanish Level 1 standards. The main linguistic goal is to achieve some degree of comfort with spoken Spanish. The course also includes an initial familiarization with Spanish written materials. Students explore the role of culture by learning about themselves and others as cultural beings.

Important note: Students planning on attending a postsecondary institution are strongly encouraged to continue the Spanish course sequence by participating in Spanish 2, 3, 4, and beyond during their high school experience.





“Children, after all, are not just adults-in-the-making. They are people whose current needs and rights and experiences must be taken seriously.”

-Alfie Kohn

Challenge Young Minds

Middle school teachers use teaching strategies that help students learn and practice higher-level thinking, reading, and writing skills. Developing these skills in middle school helps students achieve at higher levels and prepares them for more challenging coursework in high school. Our teachers help students learn key concepts and skills at high levels and in the way that is most effective for them.

Gifted Education in Middle School

The middle school approach for high-achieving students blends two strategies:

Cluster Classrooms

Similar to the elementary gifted education cluster model, students in grades 6-8 are placed in classes with a cluster (core group) of students at their same instructional level with teachers specifically trained to meet the needs of gifted adolescent learners. This model narrows the range of instructional levels, allowing teachers to differentiate more effectively than they can in a classroom with a wide range of student abilities. In addition, every middle school has a differentiation specialist working with teachers to support effective differentiated teaching in every classroom.

Rigorous Curriculum and Acceleration

Offering rigorous curriculum means providing depth, flexible pacing, complexity, choice and increased student engagement and self-directed learning. The more challenging materials allow high-achieving students to go deeper with their learning than before.

In every core class (English/language arts, math, social studies and science), teachers differentiate instruction so that students continue to go deeper to extend their mastery of the content they are expected to learn. Teachers identify students who can and should tackle more challenging work within a course.



Earning High School Credit in Middle School

Math: Students who qualify and elect to participate in the accelerated math course offerings (Algebra I, Non-Linear Algebra, Geometry) can earn high school credit.

World Language: Students who elect to participate in French 1 and 2 or Spanish 1 and 2 can earn high school credit.

Please consult with your middle school counselor for more information about earning high school credit in middle school.

What is Differentiation?

Differentiation means adjusting teaching and learning activities to meet the specific needs of individual students. The goal is to help every student be challenged and to make strong academic growth. Differentiated instruction sometimes means taking different approaches to help students learn the same concept.

Example: English

Non-Differentiated Teaching	All students read the same novel. All students participate in the same activities, regardless of learning.
Differentiated Teaching	Students have a choice of 4-5 novels with a common theme (for example, courage). Discussions occur in literature circles according to novel chosen. Students are assigned a variety of roles during this activity, depending on their learning style and interests. Then, whole class activities take place focusing on the common theme of courage.

Example: Science

Non-Differentiated Teaching	All students study the same science topic and complete the same project to demonstrate their learning.
Differentiated Teaching	Students are given the same assignment: define, describe, and provide a possible solution to an environmental problem. Students have a choice of problems: acid rain; climate change; ozone depletion; waste disposal; water; or air pollution. Students may also propose their own problem. Students can choose how to demonstrate their learning: speech; digital poster; paper; create a website; or something else of their choice.

Who determines my student's cluster classroom placement?

Current elementary teachers help identify each incoming 6th grade student's middle school cluster grouping. Current middle school teachers do the same for continuing students in 7th and 8th grade.

Transition to Middle School

Welcoming New Students

Our middle schools are ready to welcome you and your student to middle school next fall! Every school has a plan to welcome new students and families.

Students receive leadership training so that they are equipped to welcome and serve as 8th grade mentors to new students each year. Every school has a student leadership program (WEB: Where Everyone Belongs or GPS: Guides to Personal Success) that actively engages new students, builds community, and strengthens school climate and culture.

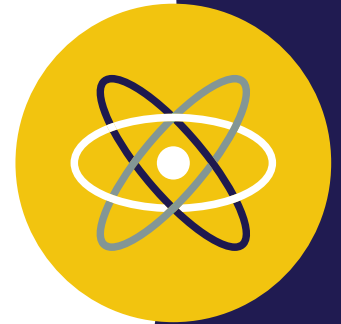
Supporting All Learners

In addition to meeting the needs of high-achieving students, each school has support systems in place to assist students with other types of needs.

- Special education services are available in every school.
- English Learner Program services are available at every K-12 school.
- School counselors are available to support student learning through educational, social/emotional, and career development.

Registration for Middle School Courses

School counselors provide course registration information to all incoming 6th graders for the upcoming year. Incoming 7th and 8th graders follow the registration process at their current middle school. If you have questions about course registration for your student, please contact the counseling office at your student's middle school (see phone numbers on page 5).



Specialty-Themed (Magnet) School

Science, Technology, Engineering, Arts and Mathematics (STEAM) at Brooklyn Middle School

Brooklyn Middle School offers a school-wide STEAM (STEM plus Arts) program that provides a middle school path for students in both of our district's elementary magnet schools (Arts and STEM).

Brooklyn Middle School's STEAM program supports students as they:

- (a) Engage in inquiry-based learning experiences that use STEAM to solve problems;
- (b) Set goals and work to obtain the skills, knowledge and experiences that will position them for future success, particularly in the STEAM disciplines;
- (c) Participate in authentic real-world experiences with practicing scientists, engineers, and technical professionals; and
- (d) Participate in challenging and accelerated opportunities to demonstrate content mastery.

*“The important thing in science
is not so much to obtain new
facts as to discover new ways of
thinking about them.”*

- William Lawrence Bragg

Digital Learning for All

Thanks to a supportive community, our district's technology levy is allowing students and teachers to transform teaching and learning in ways that could not have been imagined just a few years ago.

1:1 programs enable the creation of learning experiences that are personalized in path, place, and pace:

- Path - learning activities and experiences are differentiated and students have some choice in content, process, and product based on interests and needs.
- Place - the opportunity to learn expands as students can access learning materials and activities both in and out of school.
- Pace - mastery of content and learning objectives is accelerated as students set goals and monitor their learning.





Schoology

Schoology is a web-based learning management system that supports online learning, communication, and collaboration among teachers, students, and families. With Schoology, students can access homework and class resources anytime, anywhere. It's much easier for students to keep their homework assignments organized in Schoology than in their locker. Schoology means fewer assignments lost; richer conversations and support when students have questions; and greater access to study tools.

Students and staff access Schoology through a web browser by visiting osseo.schoology.com and logging in with their ISD 279 network username and password. Student and staff iPads also have the Schoology iOS app installed. Learn more about Schoology:

www.district279.org/schoology

Classroom Technology

Many of our classrooms have voice distribution systems that amplify the teacher's voice in a way that helps ensure that all students can hear, regardless of where they are seated. Voice amplification systems contribute to improved student learning, increased attention, and less vocal strain.

All classrooms have digital projection systems and many have interactive whiteboards that allow teachers to display information from a computer to the entire class.

Some classrooms have hand-held student-response systems that allow students to respond to questions privately so that only their teacher can see how well they are grasping the material being taught. These systems allow teachers to gather real-time data about how students are doing so that they can quickly adjust instruction in response to student needs.



Get Involved

Each middle school offers before- and/or after-school programs such as arts (visual, fine, performing), anime, cardio/strength training, chess club, and morning/afternoon hoops. There's something for everyone!

Middle school students in grades 7-8 are also eligible to participate in a variety of athletics programs for grades 7-12 at the high school level. Athletic offerings may vary by middle school.

Fall

(Aug-Sept-Oct)

Cheerleading
Cross Country
Girls Swimming
Girls Tennis
Soccer

Winter

(Nov-Dec-Jan)

Alpine Skiing
Gymnastics
Hockey
Nordic Skiing
Boys Swimming
Wrestling

Spring

(Mar-Apr-May)

Baseball
Golf
Lacrosse
Girls Softball (Fast Pitch)
Synchronized Swimming
Boys Tennis
Track

In addition, a variety of co-curricular activities are available in middle school. Activities may vary by school, but often include:

Band
Choir
Orchestra
Destination ImagiNation

Student Council
Drama
Musical

Out-of-School Time Activities for Middle School Students

Middle school students have many opportunities to be involved in out-of-school time activities that help students build leadership skills, explore a wide range of interests, and have fun. In addition to clubs, athletics, and other extracurricular activities, all of our middle schools offer after-school activities organized and supervised by the district's Community Education department and available for students in grades 6-8. To learn more about out-of-school time and non-school day activities for middle school students, contact Community Education at 763-391-7223 or visit www.district279.org/community-education.

This document contains the most complete information available as of the date it was published. Information is subject to change; be sure to contact your school if you have any questions about middle school.



Our mission is to inspire and prepare each and every scholar with the confidence, courage and competence to achieve their dreams; contribute to community; and engage in a lifetime of learning



Educational Service Center
11200 93rd Avenue North
Maple Grove, MN 55369
www.district279.org

OSSEO AREA SCHOOLS

ISD  279