

WMS Paw Print 2023.12.22

Bringing you the middle school scoop...

Principal's Message

December 22, 2023

Enjoy and early morning version of the Paw Print.

As a reminder, we have an Early Dismissal today. Buses will depart Westlake Campus @ 11:15 a.m.

Our students, faculty, and staff were in full cheer mode this week with a door decorating contest. Scroll down for some of the creative highlights (we tried to include as many as possible).

We wish all of our Westlake Families and the Mount Pleasant Community a happy holidays and a healthy new year. Remember, learning doesn't take a vacation. Read, learn new words, be curious about the world, and ask questions. We'll see you in 2024!

KEEP THE PAW PRINT BOOKMARKED!

Once you have access to the newsletter the link will update automatically, so go back at any time to see the latest version.



CLICK HERE: Older Versions Of The Paw Print Are Archived On Our Webpage

A glance at the upcoming week...

Week of 1/1-1/5

Monday- School Closed for Winter Recess

Tuesday- School Closed for Winter Recess

Wednesday - Day C

- 2:15-3:15 pm: Peer Tutoring (ELA)
- 2:20-3:20 pm: Environmental Club
- 2:45-3:15 pm: Student Council
- 2:45-4:00 pm: Science Olympiad
- 2:45-4:45 pm: Baker's Club
- 3:00-5:30 pm: Elf Musical Rehearsal

Thursday - Day B

- 2:15-3:15 pm: Peer Tutoring (Social Studies)
- 2:30-3:15 pm: Yearbook Meeting
- 2:30-3:30 pm: Crew Meeting Elf Jr.
- 3:00-5:30 pm: Elf Musical Rehearsal

Friday - Day D

- 2:30-3:30 pm: Art Club
- 3:00-5:30 pm: Elf Musical Rehearsal

Upcoming Dates:

- January 15th: Martin Luther King Day - School Closed
- January 25-28th: WMS Musical Elf Jr.

A blue rectangular box containing the text "Weekly Bulletin" in white. "Weekly" is in a smaller font above "Bulletin", which is underlined.

Important New Information, Upcoming Events, and Reminders

Sora Reading Challenge

The digital reading App called SORA has thousands of eBooks, audiobooks and magazines for each student to check out digitally.

Each student will submit a book review based on an eBook from Sora/ or an actual book using the form attached below (click on the picture or use the QR Code) and submit it to Ms. Datanelli at

Irotanelli@mtplcsd.org, or print it out and drop it off in a basket in the library.

Each book review will entitle a student to enter for a chance in the raffle (multiple reviews will increase chances) with only one chance to win a prize.

Prizes include: Blank diaries, pens, markers, door decorations, and many more. Donated prizes are welcome too!

Sora Access

Students can access Sora through Classlink or by following these instructions. Thank you Ms. Rotanelli.

Sora Reading Challenge

How many books can you read during Winter Recess?

Read at least 2 books or more **and** complete a book review for each to be entered into a raffle.

There are thousands of eBooks to read on Sora!

Many prizes will be given out, but you can only win once!

Sign in to Sora through Classlink.



Scan the QR Code to access the book review template.



Sora offers the ability for students to explore age-appropriate digital books from NY Reads



Here's how to access titles from this State-wide collection through Sora:

1. In Sora, sign into Southern Westchester BOCES with your school district credentials.
2. Click or tap menu icon and select Add library.
3. Use the search box to find and select NY Reads.
4. Find and select your school district to continue.
5. Sign in with your school credentials.
6. Now when you search for books, it will look in both collections. When browsing, you can choose which collection to look at.

WMS PTA Standard Membership Raffle

Win a \$50 gift card to Wood & Fire in Pleasantville. To be entered to win all you need to do is sign up to be a member of the WMS PTA Standard level or make an open donation amount of \$25 minimum. All you need to do is join the WMS PTA (if you haven't already) for a chance to win the gift card.



All WMS PTA standard memberships or open donation amount of \$25 minimum collected by December 31, 2023 qualify for the raffle drawing. Please follow this link to become a member or to make a donation: <https://wmspta18-19.memberhub.com/store>

The winner will be announced January 5th, 2024!

Joining the WMS PTA helps us offer educational and cultural programs to students. Membership dues support programs such as cultural arts, field days and ice cream socials, grants for Wellness Day, teacher and staff appreciation, additional supplies and resources for the classrooms, class trips/scholarships, and Woo Hoo Welcome, to name a few.

DON'T MISS OUT on the WMS PTA Membership Raffle! Join Today!

January 10th at 6:00 p.m. - PTA Book Study

We met this week and discussed strategies for helping student use their power of looking ahead to manage satiations, helping them bounce back from mistakes or failure, and helping them be comfortable with who they are and accept differences.



The book study team will be summarizing some of the most important things we learn and sharing them with you later this spring in an interactive way. Stay tuned. All are welcome to join the next session in January. We will be discussing Chapters 6, 7, and 9.

Principal's Leadership Group - Snapshots of What's Happening

Icosohedron

Students in Math 8 constructed icosahedron holiday ornaments and learned all about this intriguing three-dimensional figure. They explored how icosahedrons appear in areas such as architecture, astronomy, computer graphics, gaming, sports equipment and molecular geometry. Each student started with twenty congruent circles and folded them into equilateral triangles. They then glued the pieces together and added some ribbon to create beautiful holiday decorations!



Staying Healthy For The Holidays

Ms. Woolard's Class is getting on board with indoor gardening.



Teamwork

Using lettuce grown from their hydroponic system.



And Super Salads

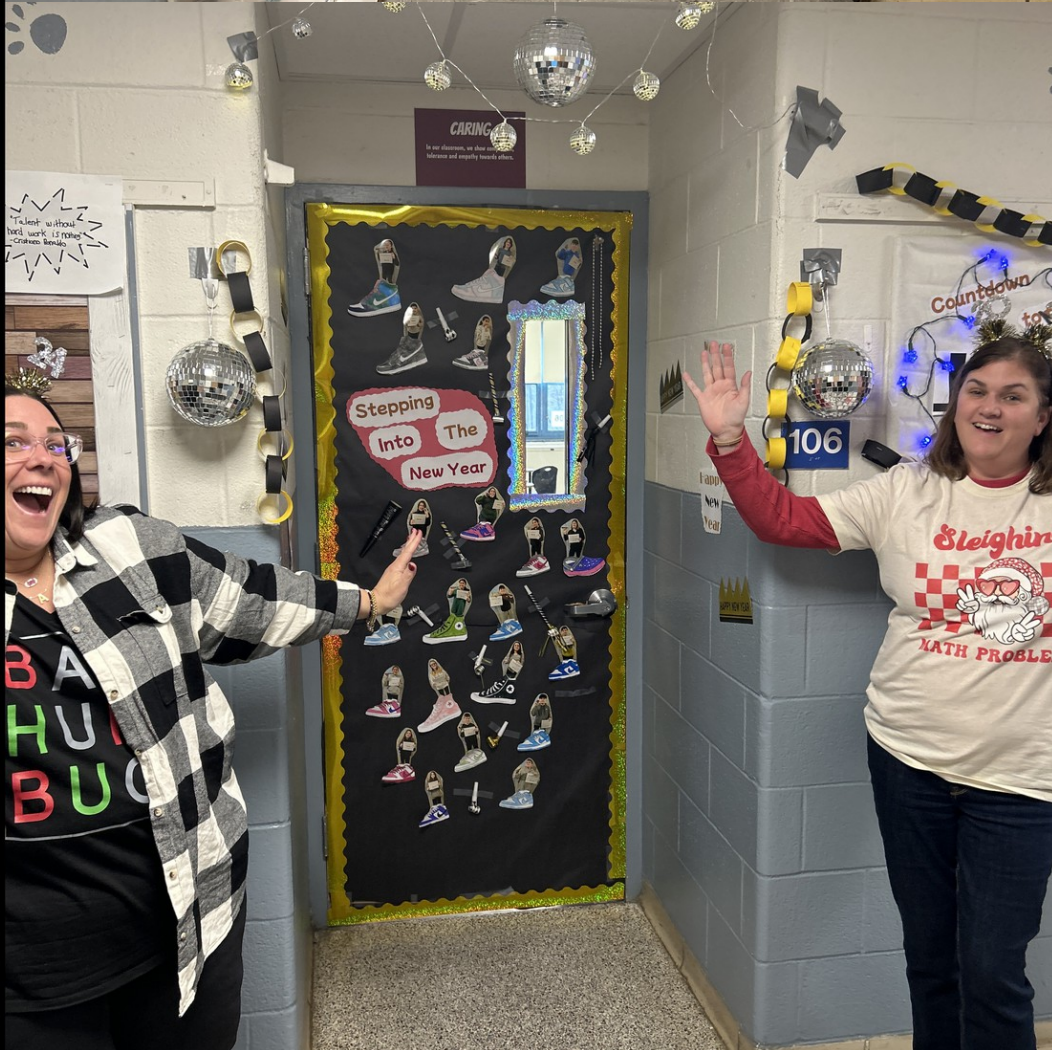
To enjoy a healthy snack.

Door Decorating













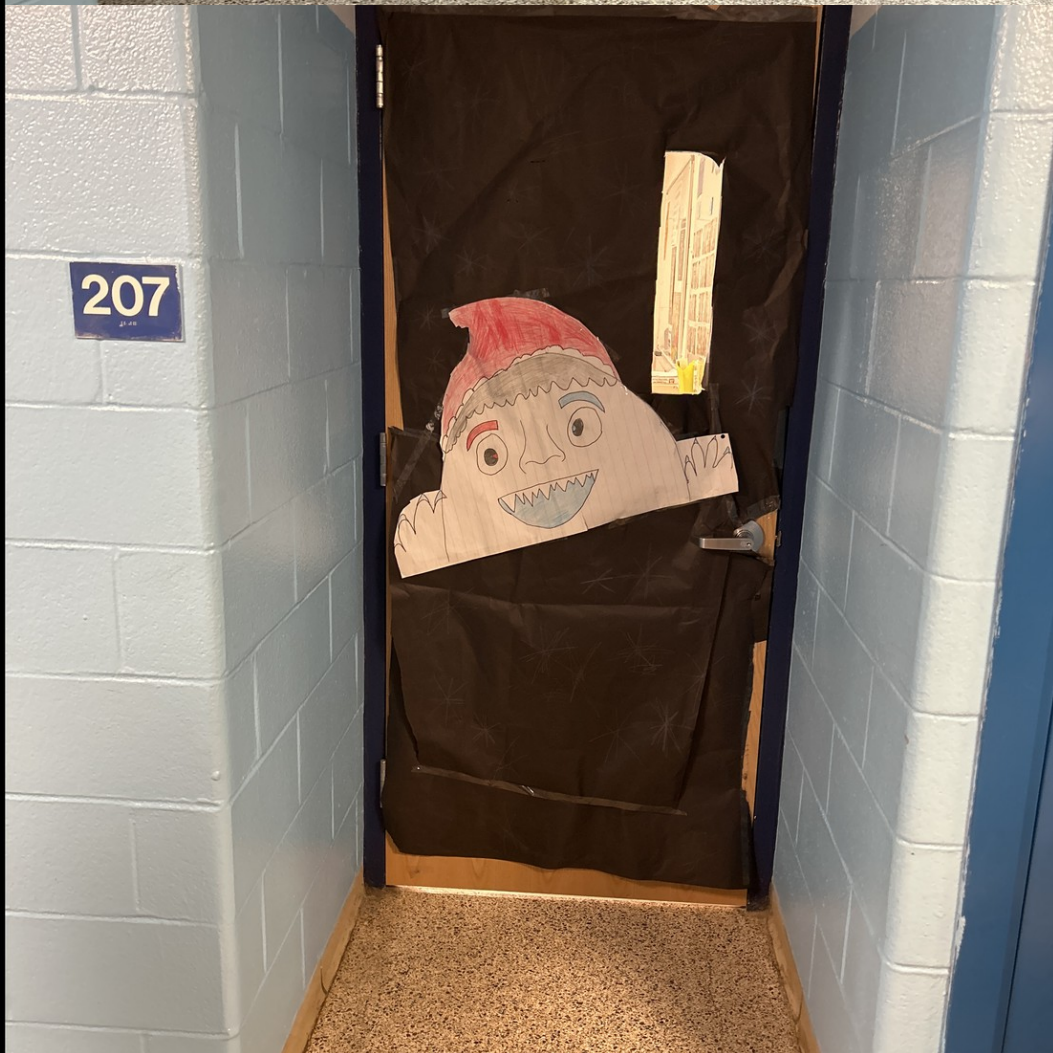












Save The Dates

Westlake Middle School

CLASS OF
2024

Save the Date

8th Grade Moving Up Dance

Sponsored by the WMS PTA

Club Infinity

404 Irvington Street
Pleasantville

June 25th

7:00-10:00

Full Buffet Dinner

&

DJ



Westlake Wildcat Sports

Please check the Westlake Wildcats Sports Calendar for ANY updates or changes.

CALENDAR: <http://www.westlakewildcats.org/calendar>

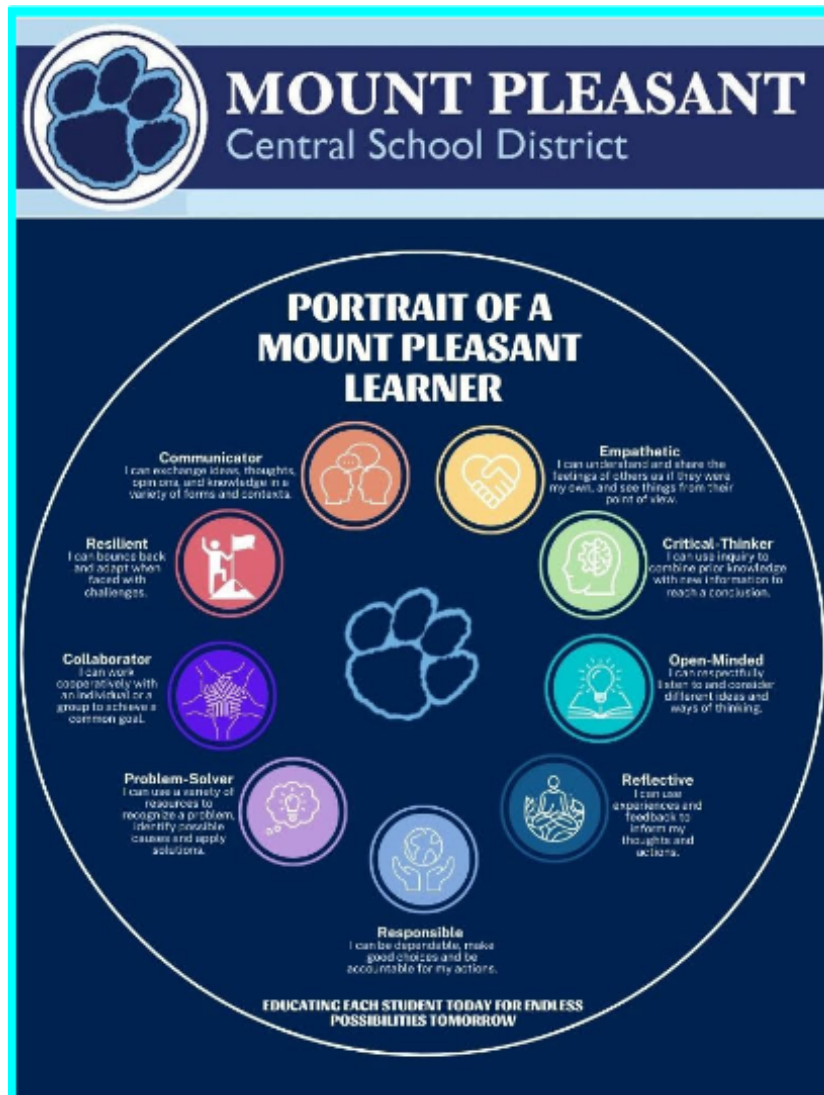
Athletic Office contacts:

Shawn Baumann, Athletic Director at sbaumann@mtplcsd.org

Maria DiNota, Athletic Secretary at mdinota@mtplcsd.org



Westlake Middle School Website



Anthony Mungioli

Anthony is using Smore to create beautiful newsletters