

# EVERYBODY MATTERS. EVERY MOMENT COUNTS. WE LEARN WE LEAD WE LOVE

## UPCOMING DATES TO REMEMBER:



**Celebration Week at Hawthorn Hills**  
**DEC 18-22**

**MONDAY**  
CANDY CANE DAY  
WEAR RED AND WHITE

**TUESDAY**  
FESTIVE HEADBAND OR HAT DAY

**WEDNESDAY**  
WEAR GREEN DAY  
WEAR GREEN TO SHOW SCHOOL PRIDE

**THURSDAY**  
FESTIVE/UGLY SWEATER DAY

**FRIDAY**  
PAJAMA DAY  
SNUGGLE IN FOR A GREAT LAST DAY BEFORE WINTER BREAK

REMEMBER YOU WILL STILL BE GOING OUTSIDE FOR RECESS. BRING YOUR WINTER GEAR



### \*Winter Break\*

(No School)

December 25th-January 1st



**\*\*NO YMCA ESSER AFTER SCHOOL\*\***  
December 22nd

### \*4th Grade to School Forest\*

Remember to dress warm!

January 9th



In need of an at home Covid test? Call the office at 715-261-0045 to request one to be either sent home with your student(s) or to be picked up!

\*While supplies last\*

## WHAT IS FAST?

The FAST Program is a FREE family engagement program that supports children's well being and learning readiness, empowers parents and builds social relationships so children can thrive. Limited to 15 families so make sure to sign up ASAP!

Contact:

Maria Gibbs at [mgibbs@wausauschools.org](mailto:mgibbs@wausauschools.org) /

715-216-6494 or

Terri Lemirand-Love at

[tlemirandlove@wausauschools.org](mailto:tlemirandlove@wausauschools.org)

FAST Dates & Times:

January 22nd & 29th

February 5th, 12th, 19th & 26th

March 4th & 11th

Graduation and celebration:

March 18th

Time: 5-7:30PM at

Hawthorn Hills



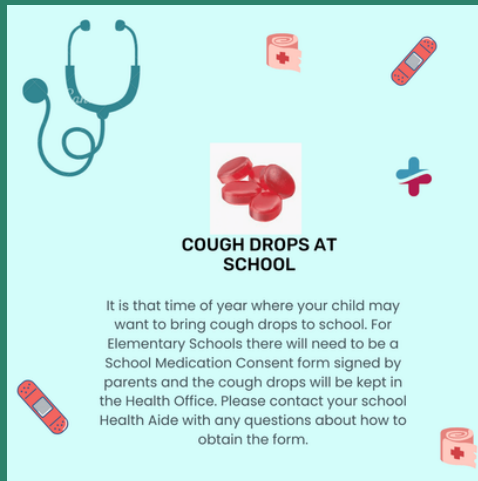
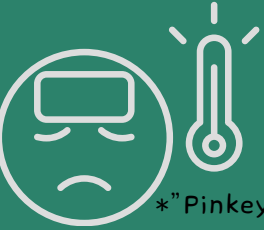
# HAWTHORN HERALD

# MORE TO KNOW

## When should I keep my child home from school?

Per Wausau School District Communicable Disease Protocol School Exclusion-

- \*If student has a fever at or above 100.4 they need to remain home
- \*Student needs to remain at home until fever is gone for 24 hours without medication
- \*Undiagnosed or untreated skin rash or sores that can not be covered
- \*Vomiting more than once in the previous 24 hours
- \*Diarrhea 3 times in the previous 24 hours
- \*Upper respiratory illness with frequent cough/drainage
- \*"Pinkeye" if accompanied by fever, behavioral change or inability to avoid touching eyes  
(Antibiotics not required to return to school)
- \*Strep Throat-student may return 24 hours after medical treatment has begun or with health practitioners approval
- \*Students whose immunization status is not in compliance with the Wisconsin immunization law
- \*Students with known suppressed immunity may be excluded, for their protection, when cases of communicable disease (i.e. measles, chickenpox) occur at school
- \*If student does not have a fever but overall does not look/feel well, please let them rest at home if possible



**QUESTIONS? COMMENTS? CONCERNS?  
JOKES? WORDS OF ENCOURAGEMENT?**



## CONTACT US!



Principal- Phil Beck  
Email: [pbeck@wausauschools.org](mailto:pbeck@wausauschools.org)  
Phone: (715)261-0045 ext. 27046

Social Worker- Megan Berger  
Email: [mberger@wausauschools.org](mailto:mberger@wausauschools.org)  
Phone: (715)261-0045 ext. 27051

Admin Assistant- Olivia Sniegowski  
Email: [osniegowski@wausauschools.org](mailto:osniegowski@wausauschools.org)  
Phone: (715)261-0045

School Psychologist- William Gerbode  
Email: [wgerbode@wausauschools.org](mailto:wgerbode@wausauschools.org)  
Phone: (715)261-0045 ext. 27050

Health Aid- Heather Bogen  
Email: [hbogen@wausauschools.org](mailto:hbogen@wausauschools.org)  
Phone: (715)261-0045 ext. 27502

4K Admin Assistant- Kellie Messmann  
Email: [kmessmann@wausauschools.org](mailto:kmessmann@wausauschools.org)  
Phone: (715)261-0045 ext. 27055

