

Get INVOLVED

2023-2024 School Year
Natonia Tillman, Ed.S, Principal

BETTIS PREPARATORY LEADERSHIP ACADEMY

K-8 Public Charter STEM School

STEM
Education



healthy
lunches

HANDS-ON
LEARNING

after school
PROGRAM

SMALL
classrooms

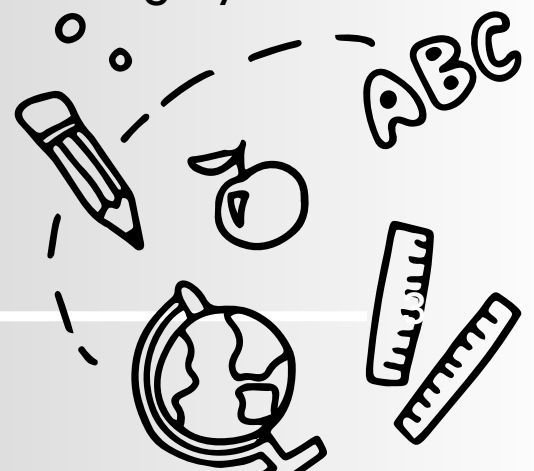
A SMALL SCHOOL MAKING A BIG IMPACT.



OUR MISSION



The mission of Bettis Preparatory Leadership Academy is to inspire the students of Bettis Preparatory Leadership Academy to pursue Science, Technology, Engineering, and Mathematics (STEM) as their area of focus and to help them become academically successful students of integrity who will positively impact our society and world.



The future of the world is here.- Est. 2018

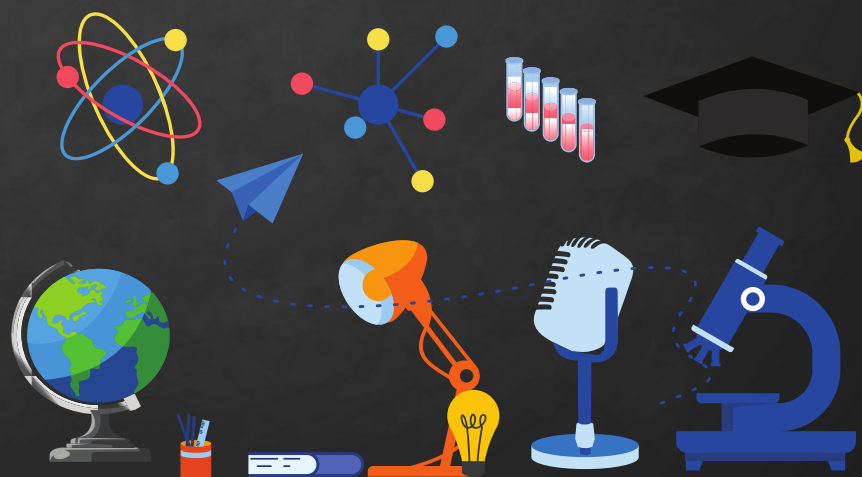
Table of Content

3 OUR HISTORY

5 STEM REINVENTED

7 A GLIMPSE INTO OUR INNOVATIVE WORLD

9 CONTACT US
Get to know us better



ESTABLISHED

Bettis Preparatory Leadership Academy was founded in 2018 by a group of concerned citizens and community members, under the leadership of Dr. Myrtis Brightharp-Walker. From the time of its opening it has stayed steadfast in being a school of choice for students who desire a smaller learning environment and STEM education.



GROWING

Currently, Bettis Preparatory Leadership Academy is in its 5th operating school term, under the leadership of Natonia Tillman. The school is at its highest enrollment since the pandemic with 139 students. The goal is have between 160 students by the end of the 2023-2024 school year leading into the 2024-2025 school year with record numbers. Preserving the small classroom size is a must; therefore, the school will continue to enroll students in K-8, but focus its recruiting efforts in middle school expansion. Offering students in grades 6-8 an option of a less crowded learning environment focused on igniting their passion of the world of STEM while still being allowed to enjoy extracurricular activities to include clubs, sports, and so much more. Get involved today and help our school grow by recruiting and sharing in your communities, places of worship, and other areas that we growing.



STEM REINVENTED

re·in·vent
/ˌrēən'vent/
verb

change (something) so much that it appears to be entirely new.

A new way of thinking about the field of STEM.

WHAT IS STEM REINVENTED?



Oh the places you will go when you allow your mind to wonder and your hands to move! In the amazing world of STEM education. According to Invent.org, STEM education uses hands-on experiences to teach children the important concepts that will help position them for future success. Hands-on learning allows students to think creatively and use innovation to find unique solutions to common problems – ultimately making our world a better place.

At Bettis Preparatory Leadership Academy, we take STEM education to another level, so much so that we REINVENT the educational world of STEM. Inside the classrooms our teacher embed STEM education into everyday lessons, making learning relevant and real...but the magic really happens on Fridays! If you take a stroll down our halls, you will see hands-on learning, innovative dives into inquiry and problem solving, teachers asking probing questions, and students using their hands to solve the problems of the moment.

HOW CAN I *GET* INVOLVED?

As a STEM education school, our community partners bring learning to life by sharing, presenting, and allowing our students to experience multiple levels of learning. To get involved we need your time and your knowledge. Volunteer at our school on Fridays or plan for our school to take a field trip to your place of employment or help us plan for a trip to nearby amazing places to explore.



A GLIMPSE INTO OUR INNOVATIVE WORLD



"Innovation is taking two things that exist and putting them together in a new way." – Tom Freston

BRINGING ALL THINGS TOGETHER

Our school's instruction is always focused on core instruction in the areas of ELA, math, science, and social studies. However, the beauty of STEM education is the mere fact that while we are focused on STEM we are constantly connecting what we are teaching and our students are learning in the core content areas. In doing this, our students get a richer and more meaningful learning experience.

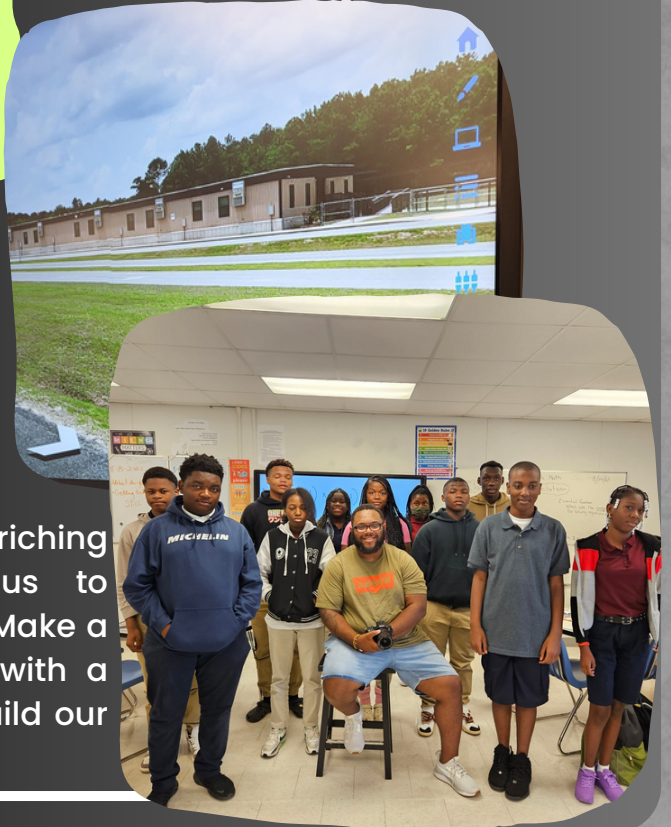
NEW LEVELS OF INNOVATION

1. Models Academy for males in grades 4-8
2. Full Social Emotional Learning Program.
3. Our own 8th Grade Leadership Program.
4. Expanded course options with Virtual SC.
5. Teacher led academic assistant blocks to focus on academic strengths and weaknesses.
6. STEM Holidays

HOW CAN I *GET* INVOLVED?

Nothing just happens, it takes lot of planning and efforts of intentionally bringing different parts together to make a whole. Our school is in constant need of donations, grants, and funding sources. Our goal is to develop scholars through innovation and exposure.

Expanding our program options and enriching our learning experiences will help us to grow...grow...grow! Partner with us today. Make a donation, write a grant, or connect us with a funding partner to help us continue to build our innovative programs.



GET TO KNOW US BETTER

Our school is so much more than your ordinary school. Come explore, learn more about our programs, and jump in as a new family, new employee, or new community partner. We have something for everyone!
#followmetobpla



CONTACT US



www.bettisprep.net



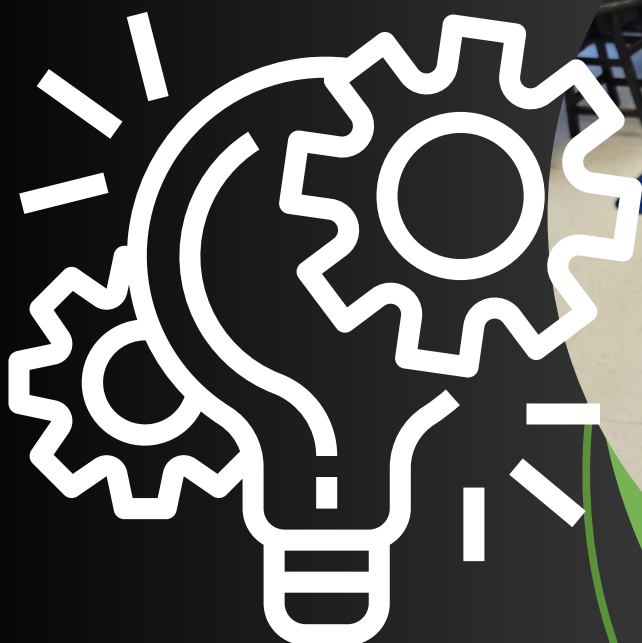
803-663-7266



info@bettisprep.org



69 Nicholson Drive,
Trenton, SC 29847



THANK YOU

