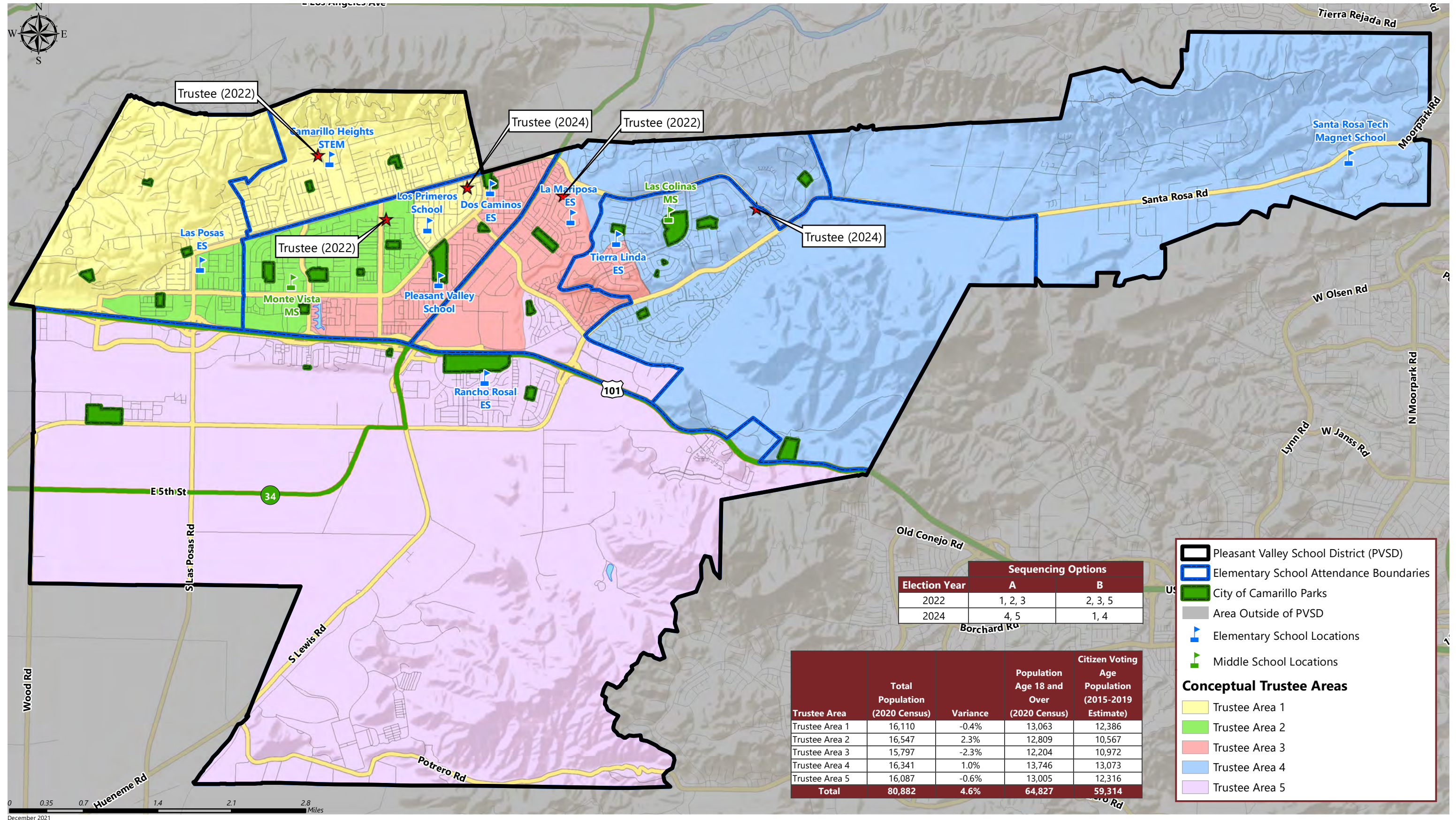


PLEASANT VALLEY SCHOOL DISTRICT

CONCEPTUAL TRUSTEE AREAS - SCENARIO 3B



Election Year	Sequencing Options	
	A	B
2022	1, 2, 3	2, 3, 5
2024	4, 5	1, 4

Trustee Area	Total Population (2020 Census)	Variance	Population Age 18 and Over (2020 Census)	Citizen Voting Age Population (2015-2019 Estimate)
Trustee Area 1	16,110	-0.4%	13,063	12,386
Trustee Area 2	16,547	2.3%	12,809	10,567
Trustee Area 3	15,797	-2.3%	12,204	10,972
Trustee Area 4	16,341	1.0%	13,746	13,073
Trustee Area 5	16,087	-0.6%	13,005	12,316
Total	80,882	4.6%	64,827	59,314

- Pleasant Valley School District (PVSD)
- Elementary School Attendance Boundaries
- City of Camarillo Parks
- Area Outside of PVSD
- Elementary School Locations
- Middle School Locations

Conceptual Trustee Areas

- Trustee Area 1
- Trustee Area 2
- Trustee Area 3
- Trustee Area 4
- Trustee Area 5

0 0.35 0.7 1.4 2.1 2.8 Miles
December 2021

PLEASANT VALLEY SD

CONCEPTUAL TRUSTEE AREAS - SCENARIO 3B

Total Population:	80,882	Ideal Population:	16,176	Variance:	4.6%
--------------------------	---------------	--------------------------	---------------	------------------	-------------

Total Population (2020 Census)					
	Trustee Area 1	Trustee Area 2	Trustee Area 3	Trustee Area 4	Trustee Area 5
Population	16,110	16,547	15,797	16,341	16,087
Population Variance	-66	371	-379	165	-89
	-0.4%	2.3%	-2.3%	1.0%	-0.6%
Hispanic/Latino	23.0%	31.7%	34.2%	15.8%	28.4%
White	61.3%	45.8%	46.9%	68.2%	49.8%
Black/ African American	1.4%	3.9%	1.8%	0.9%	2.7%
American Indian/ Alaska Native	0.2%	0.2%	0.2%	0.2%	0.2%
Asian	7.9%	12.1%	10.5%	8.9%	13.0%
Native Hawaiian/ Other Pacific Islander	0.2%	0.3%	0.1%	0.2%	0.2%
Other	0.8%	0.6%	0.6%	0.6%	0.8%
Two or More Races	5.2%	5.4%	5.7%	5.3%	4.9%

Population 18 and Over (2020 Census)					
	Trustee Area 1	Trustee Area 2	Trustee Area 3	Trustee Area 4	Trustee Area 5
Population	13,063	12,809	12,204	13,746	13,005
Hispanic/Latino	20.4%	28.5%	31.2%	13.9%	0.0%
White	64.6%	49.7%	50.2%	71.1%	52.1%
Black/ African American	1.4%	3.7%	1.9%	0.9%	2.8%
American Indian/ Alaska Native	0.2%	0.2%	0.2%	0.1%	0.3%
Asian	8.4%	13.0%	10.8%	9.2%	13.7%
Native Hawaiian/ Other Pacific Islander	0.2%	0.3%	0.1%	0.2%	0.3%
Other	0.7%	0.6%	0.6%	0.6%	0.8%
Two or More Races	4.2%	4.0%	5.0%	3.9%	3.9%

Citizens by Voting Age Population Estimate (2015-2019)					
	Trustee Area 1	Trustee Area 2	Trustee Area 3	Trustee Area 4	Trustee Area 5
Population	12,386	10,567	10,972	13,073	12,316
Hispanic/Latino	18.9%	21.6%	28.6%	14.1%	30.4%
White	69.4%	59.4%	60.7%	74.1%	57.3%
Black/ African American	1.1%	3.8%	0.7%	1.1%	2.1%
American Indian/ Alaska Native	0.2%	0.7%	0.3%	0.7%	0.3%
Asian	7.3%	11.4%	7.1%	8.9%	7.7%
Native Hawaiian/ Other Pacific Islander	0.6%	0.2%	0.0%	0.0%	0.0%
Other	N/A	N/A	N/A	N/A	N/A
Two or More Races	2.6%	2.9%	2.6%	1.1%	2.2%