

# Cedar Lee MS

Fauquier County Public Schools

## Additions and Renovations

Community Information Presentation  
July 23, 2020







**Dr. Bill Bradley**  
Project Manager



**Sr. Camilo Bearman**  
Project Designer



# Agenda

---

**Project scope:** What's in the project?

**Project schedule:** How long will this take? When will the school open?

**Project process:** With whom are the architects speaking? How are they incorporating input?

**Existing conditions:** What have the architects observed? What are the opportunities? What are the challenges?

**Schematic design:** What is being proposed for the site? What is being proposed for the school building?

# Project Scope

---

Classroom addition

Gymnasium addition

Administration renovation

Cafeteria expansion

Serving line expansion

Food storage expansion

Building security upgrades

Rooftop mechanical unit replacement

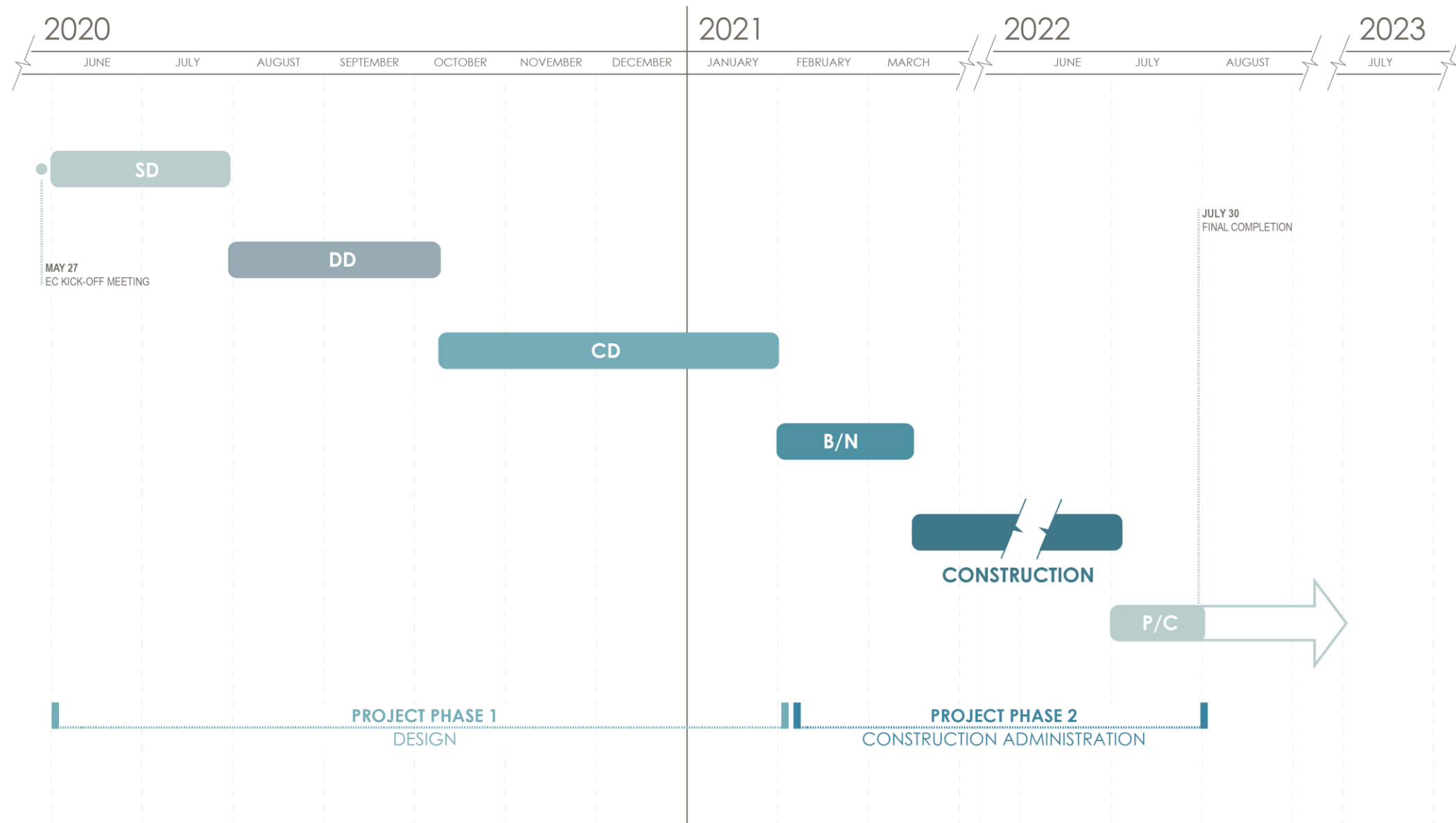
Bus loop expansion

Visitor parking relocation

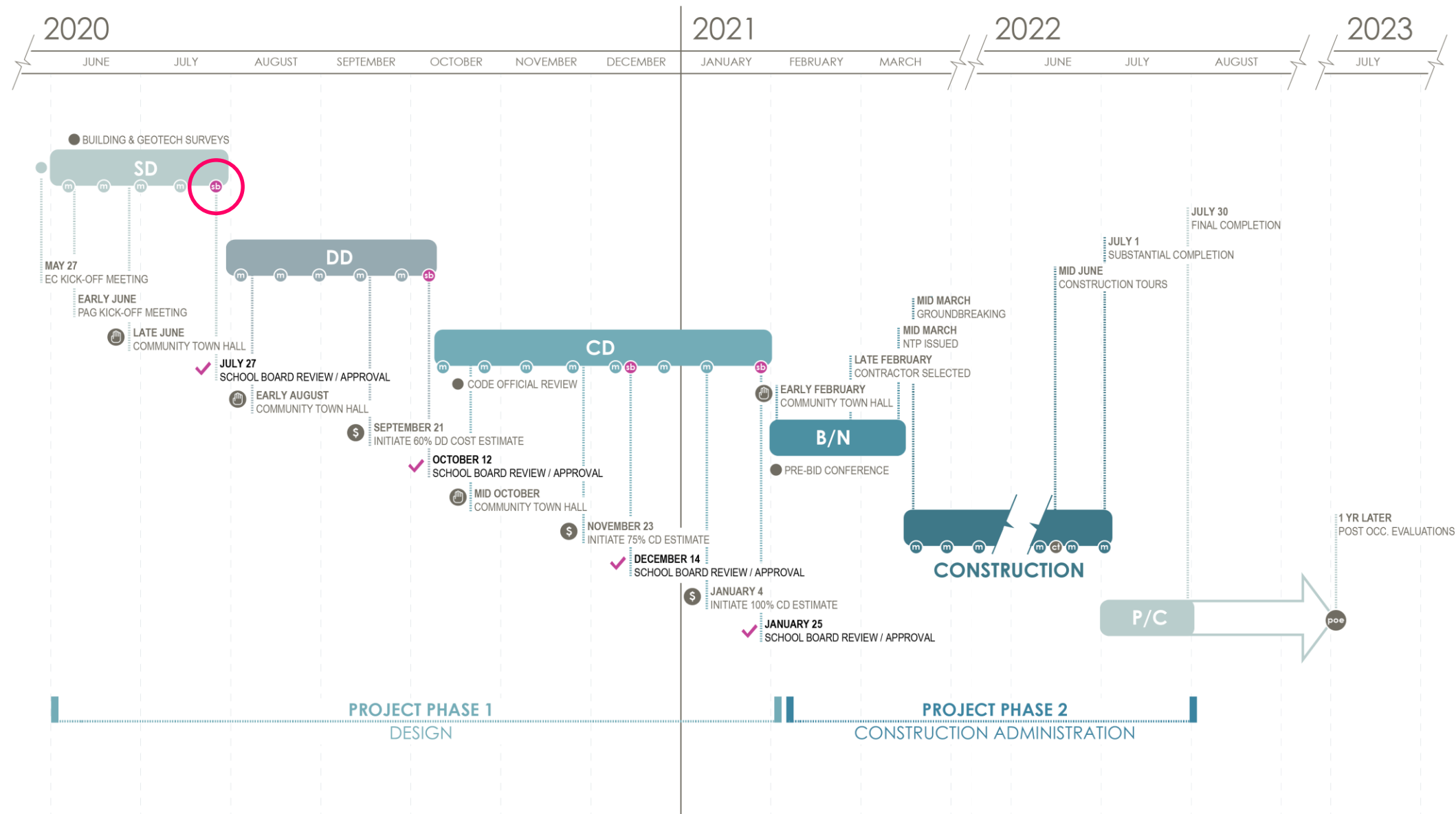
Teacher parking expansion

Car rider loop relocation

# Project Schedule



# Schedule

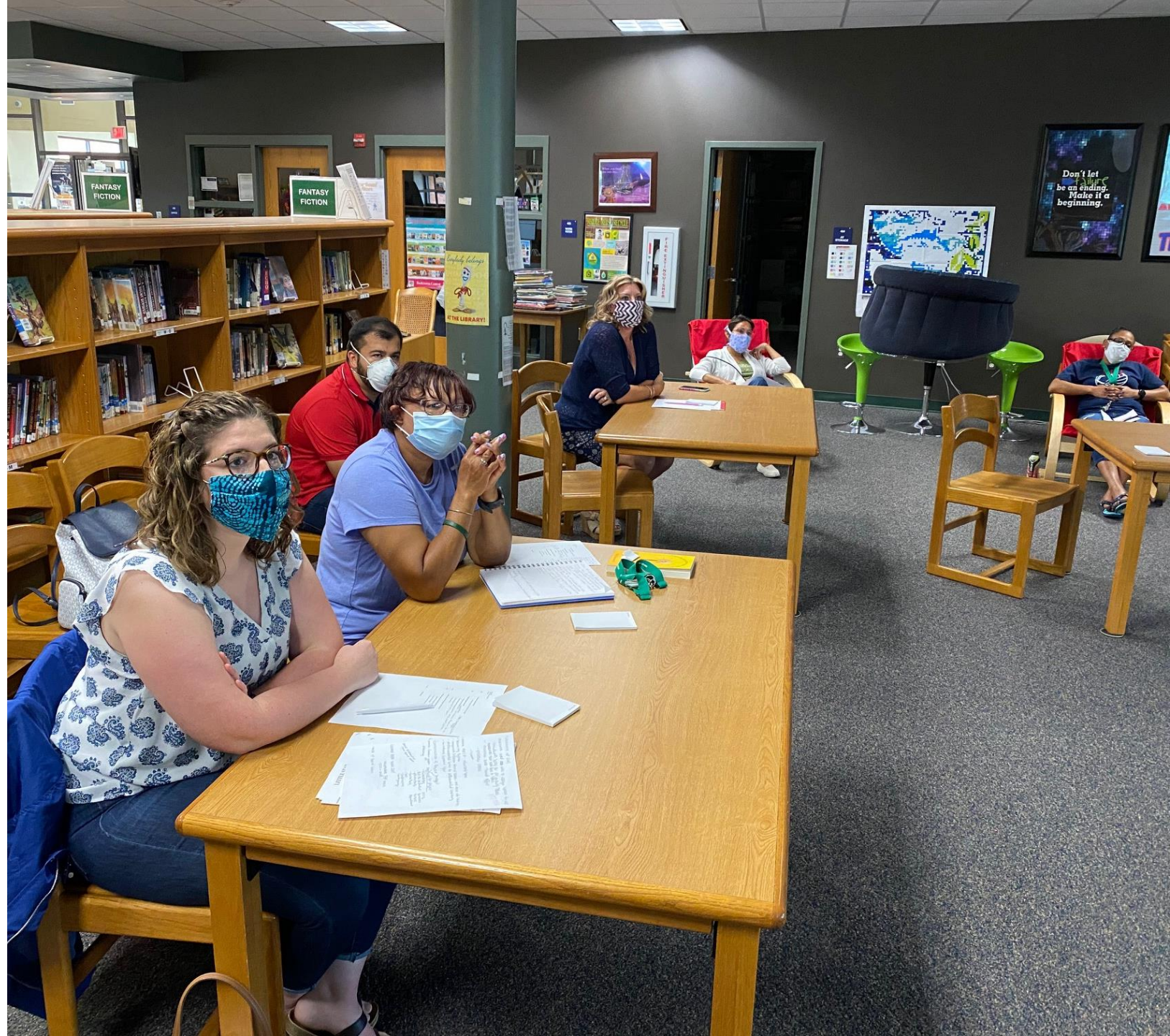




# Project Process

---

David Lee  
Sheila Jones  
Habacuc Diaz  
Katie Smyth  
Bonita Crockett  
Maria Morato  
Leah Shorb  
Stephanie Litter-Reber





# What will make this project a success?

Stantec pride in school - not a poor school - spaces to add 330 to building comfortably - maximize project - cost effective so that we can get most of reno and provide the most for the school - spaces ~~in materials~~ that make sense - Success - able to provide increase access - community understanding where it is coming from during difficult time - keeping students safe during reno in school year

- Stantec - Stage
1. Student engagement during and after school
  2. Bring attention from the community
  3. Boost teacher/staff morale
  4. Future - proof space to the community/parents
  5. Attract positive and motivated staff

Stantec STEPHANIE

We safely fit 1000 kids into the renovated bldg and provide a space that inspires learning

- safe space
- comfortable space <sup>kids don't mind</sup>
- updated space <sup>doesn't look like the school we went to in the 70s-80s</sup>

- A bldg that the Southern Tazewell community can take pride in.

- Stantec
- Having a place for a grade level to be together comfortably.
  - Providing a safe and secure environment for every one in the school.
  - Community Support

- Stantec
- Success:
- Being able to use both gym facilities - easy entry
  - Having the space to accommodate more students
  - Having a place to store equipment and leave it out without moving it often.
  - A modern look for the school.

- Stantec STEPHANIE
- shift from small school to a bigger school that has never been seen in Tazewell
  - Community buy in - bricks & a chalkboard - show that we are responsibly spending money

Stantec

mine High school middle school is about transitioning to more freedom its crucial to keep the "middle school awareness" so they don't feel alone at home away from home.

Stantec

From an AP lease - Nothing Good ever comes from Over crowding As a Mom my girls attended a 1250+ middle school and the struggle comes from maintaining a safe home like feel not a cramped

- Stantec
- Safety - Secure building <sup>safer, better for parents</sup>
  - Healthy - Comfortable learning space <sup>environment (Heat/A/C)</sup>
  - Completion in a timely manner
  - Modernization - Make the kids feel good about their school + proud to be here
  - Technology - Modernize the school by giving teachers + students more resources to teach + learn w/.

- Stantec
- What would make this project a success.
  - Community Involvement - communicating plans
  - Parent/Involvement
  - More Space
  - Class room space - crowded
  - Definitely More Natural light
  - More inviting space for the kids to feel comfortable, safe, motivated

- Stantec
- Success!
- A huge Wow factor in both aesthetics and design. Brand new music and art spaces. Enhance + improved areas for physical fitness and athletics.

- Stantec L. SHORE
- Community support, safe flow of building plan, optimize funds to yield best results for Engaging Safe space
- We have never had enrollment of close to 1000
- We have always been the biggest middle school



# What will make this project a success?

---

- Creating a safe environment for students, teachers, and visitors
- Creating a contemporary learning environment
- Creating an inspiring setting in which to learn and teach
- Involving key stakeholders and the community in the process
- Staying within budget

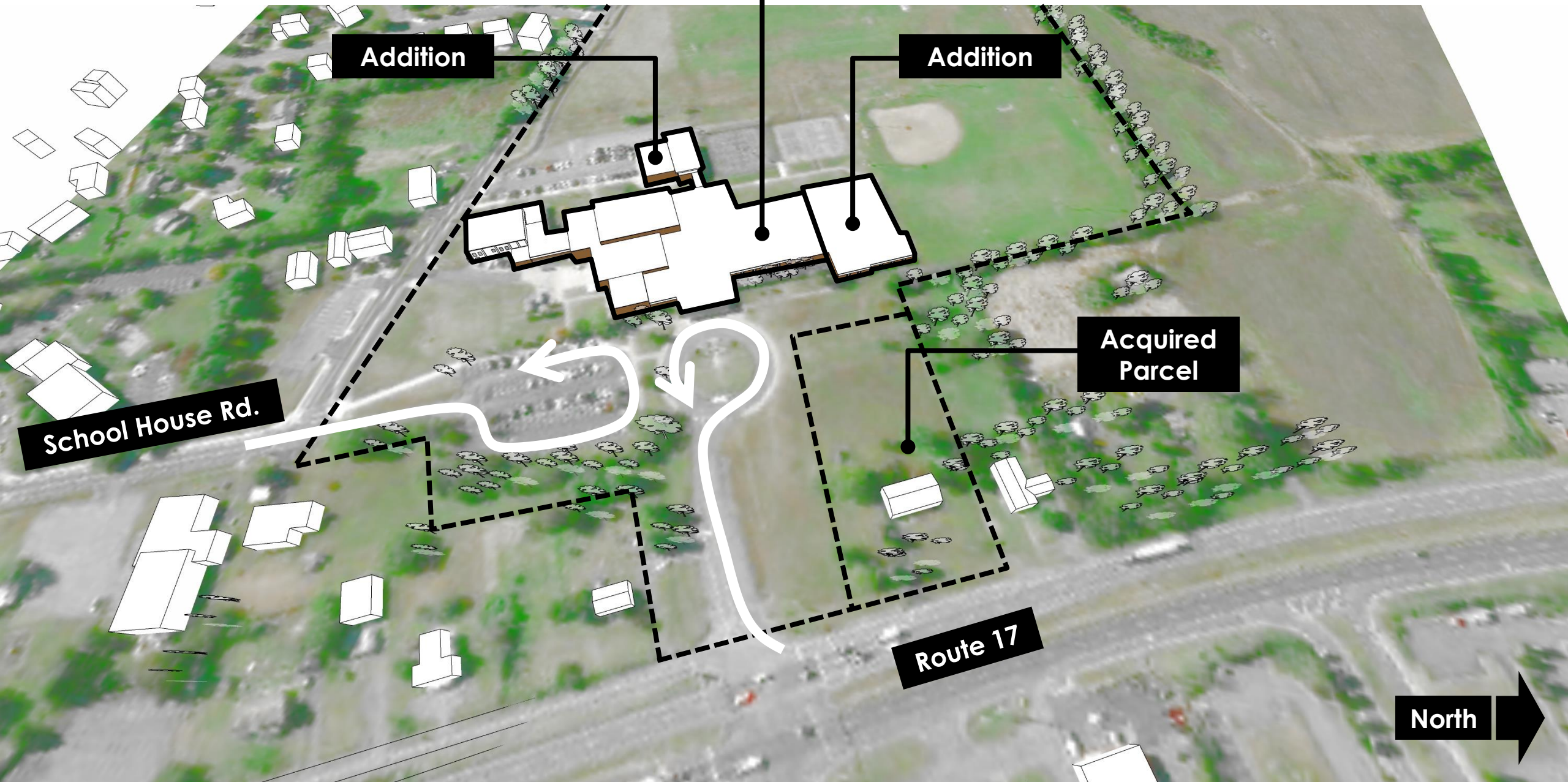
# Existing conditions

---

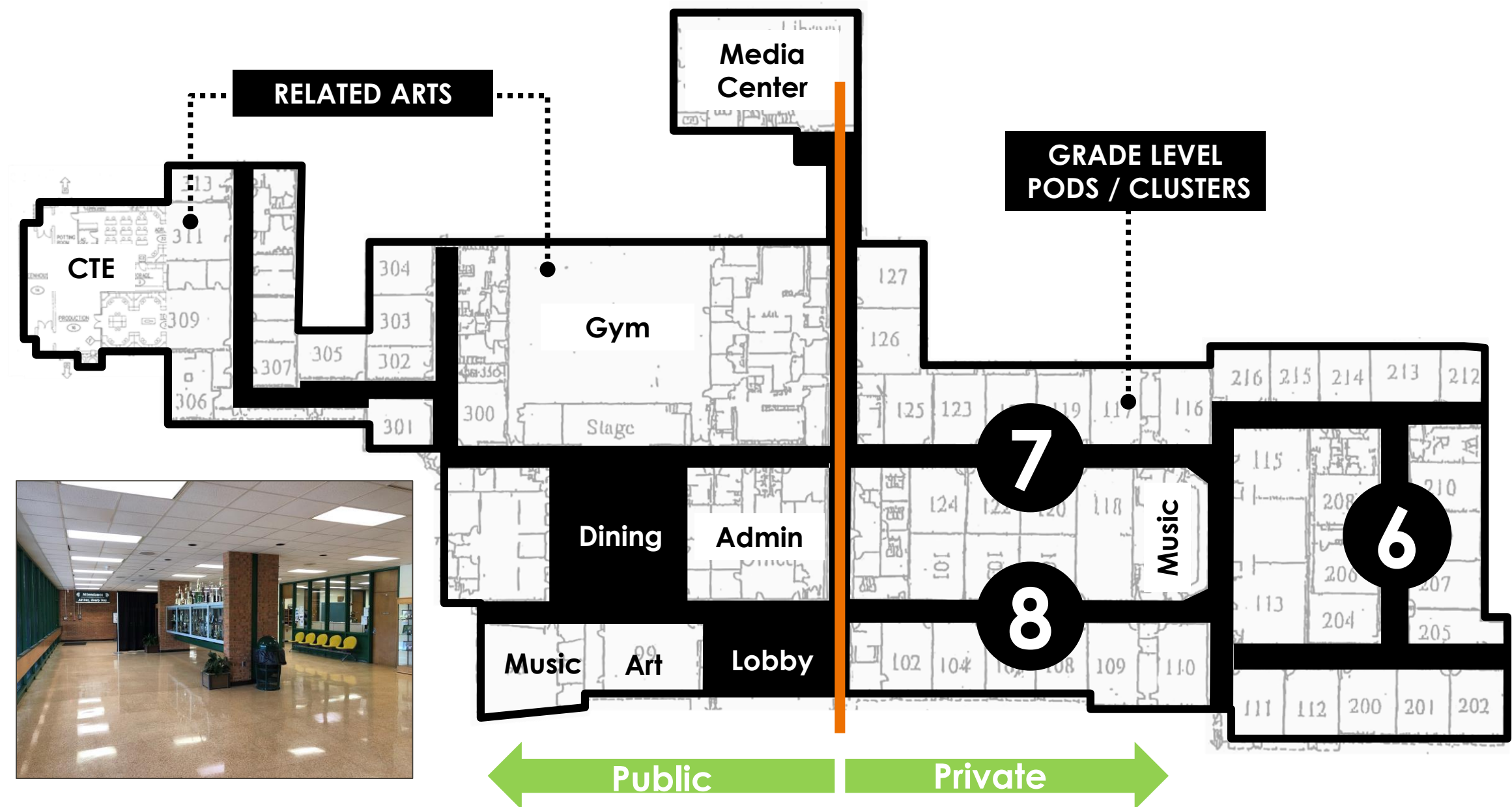




# Existing site plan



# Existing floor plan





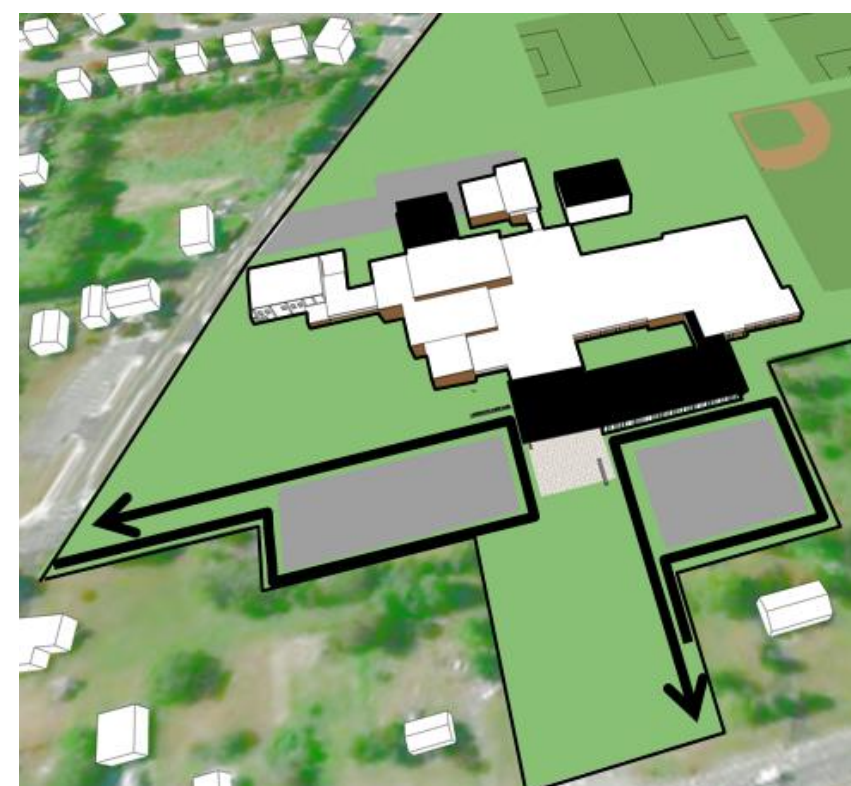
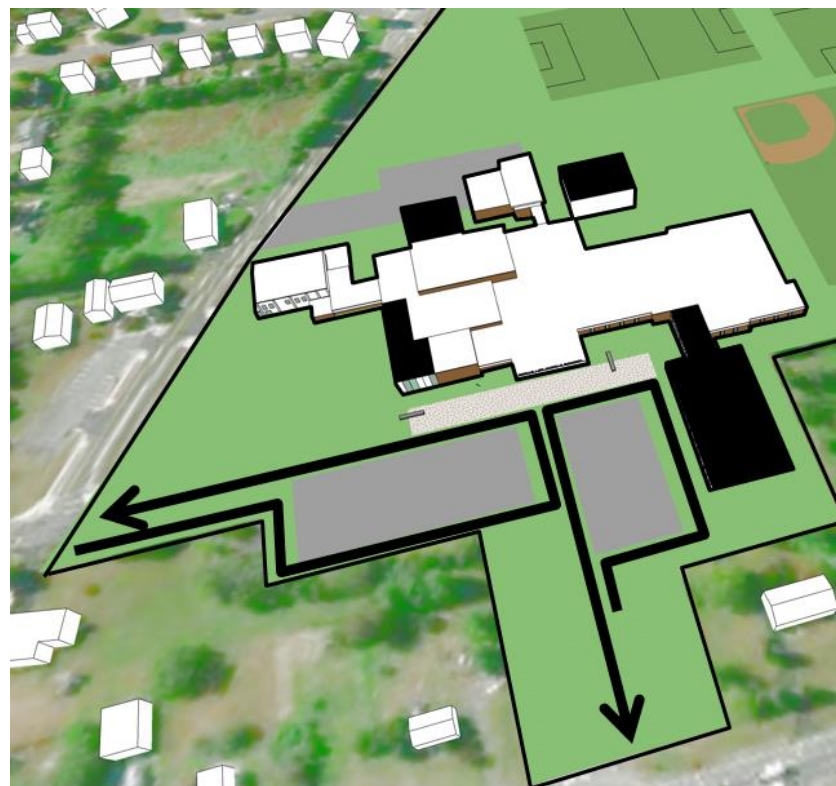
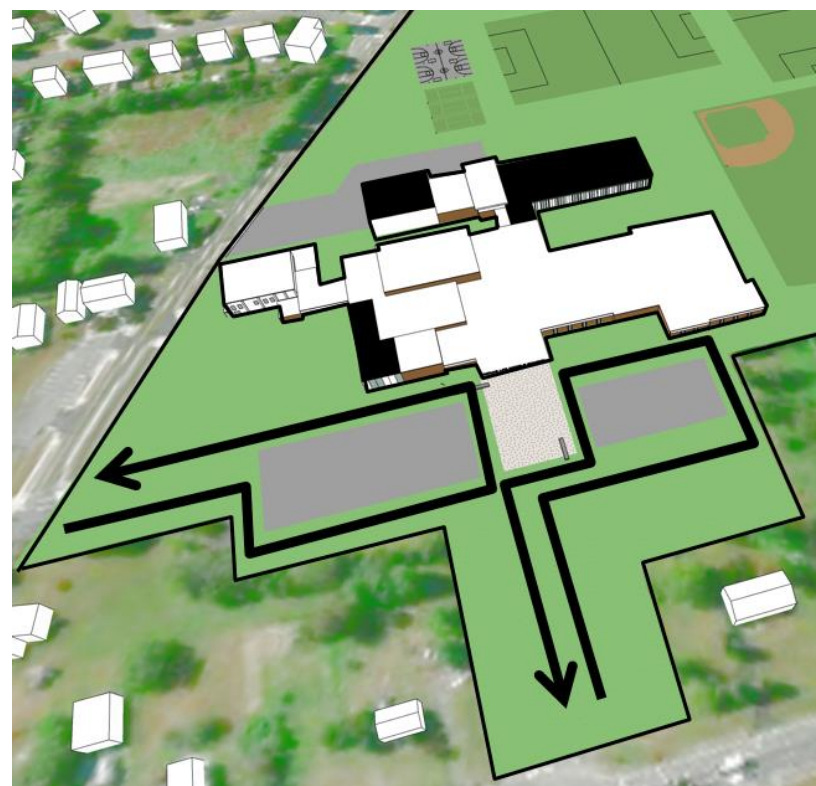
# Schematic design

---



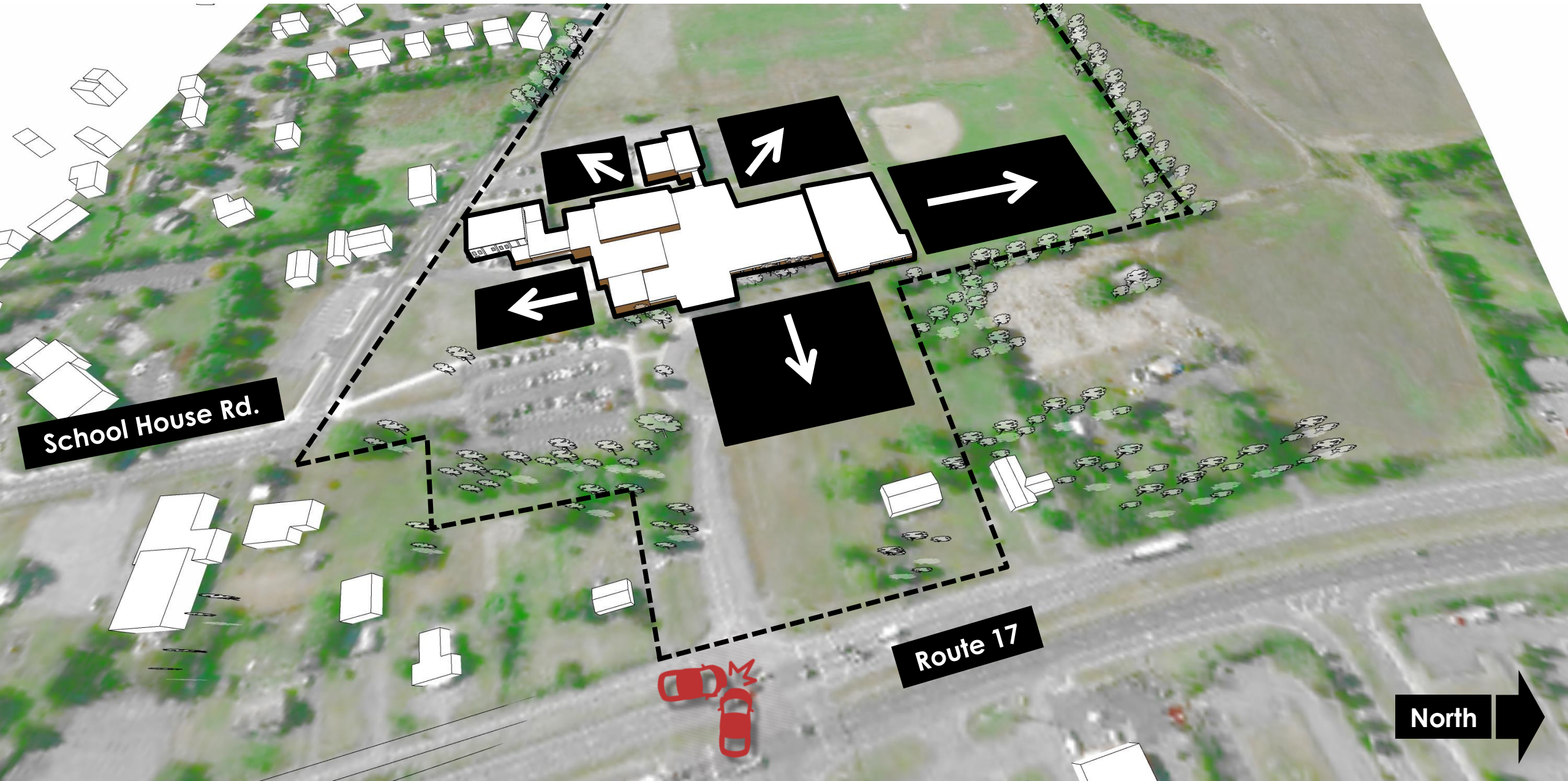
# Initial concept design studies – site access

---

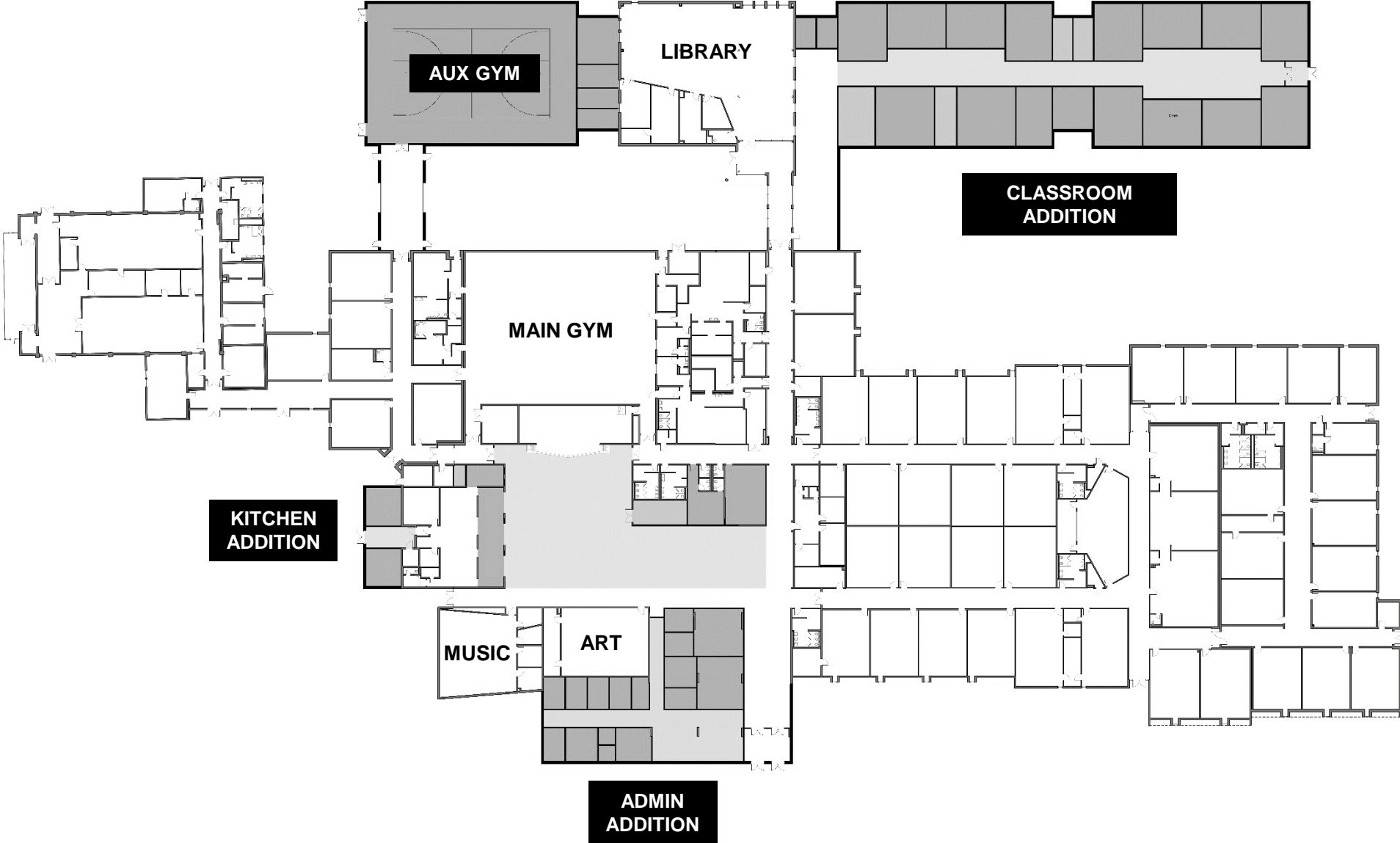




# Initial concept design studies – locations for additions

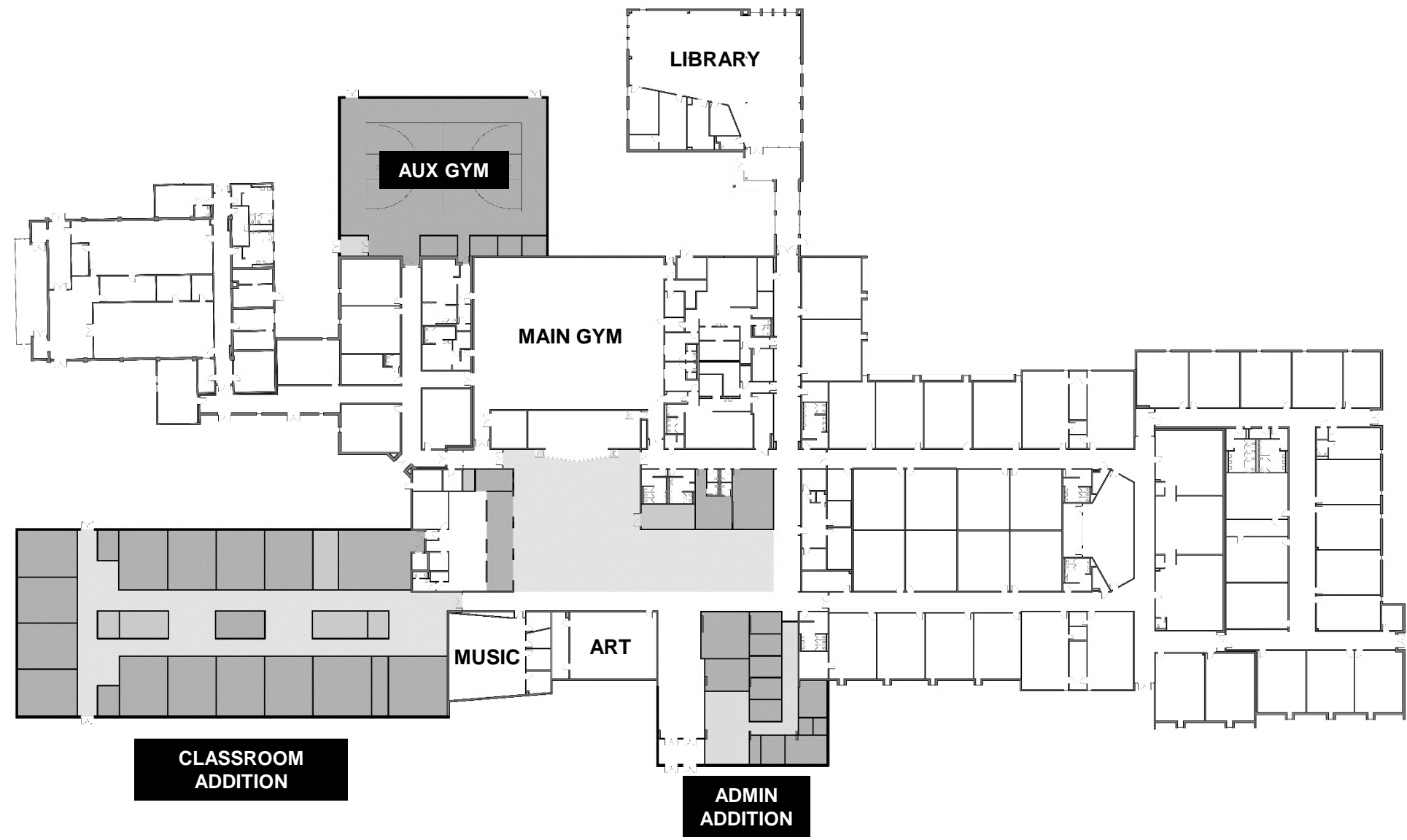


# Concept design study – classroom addition in back

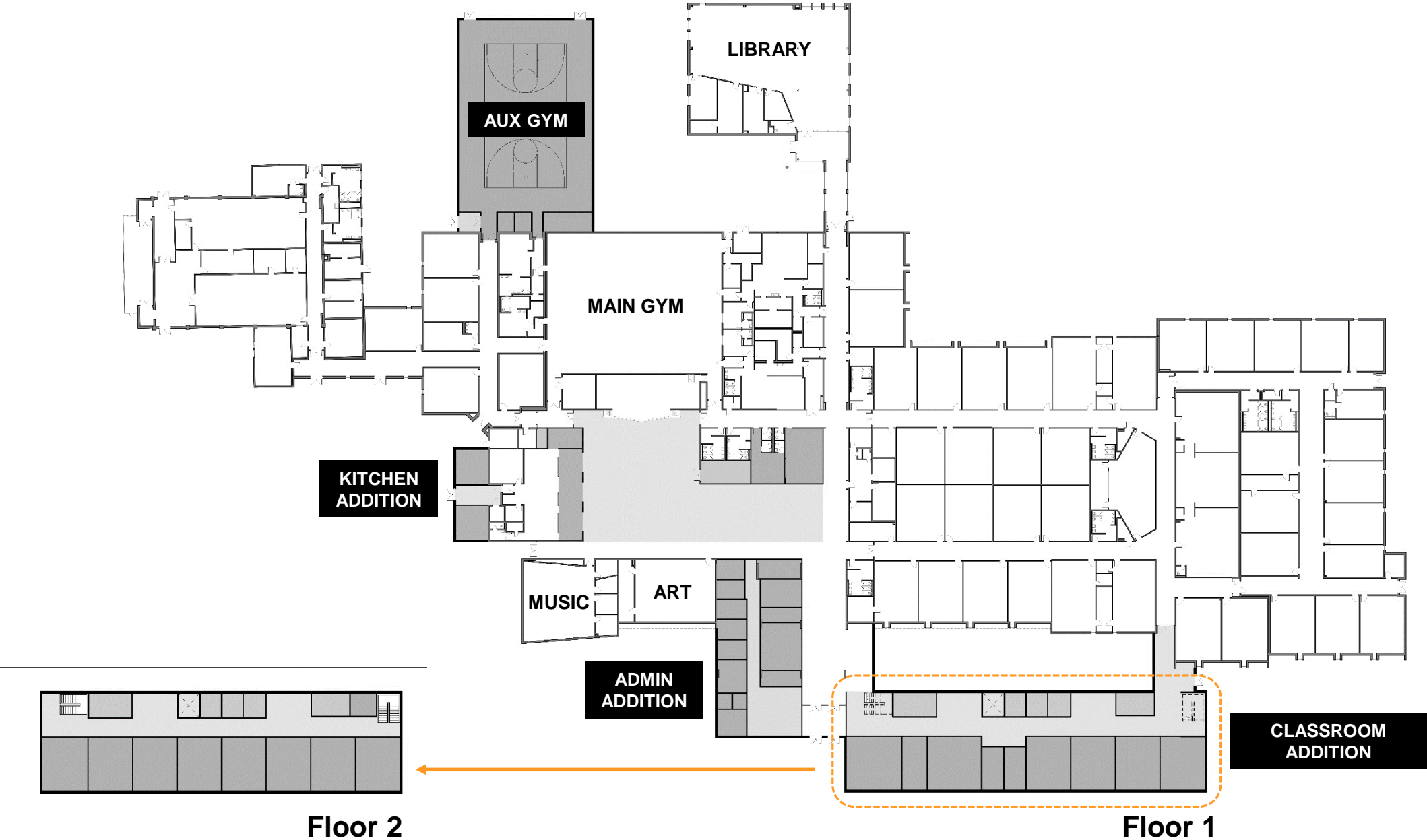




# Concept design study – classroom addition on side

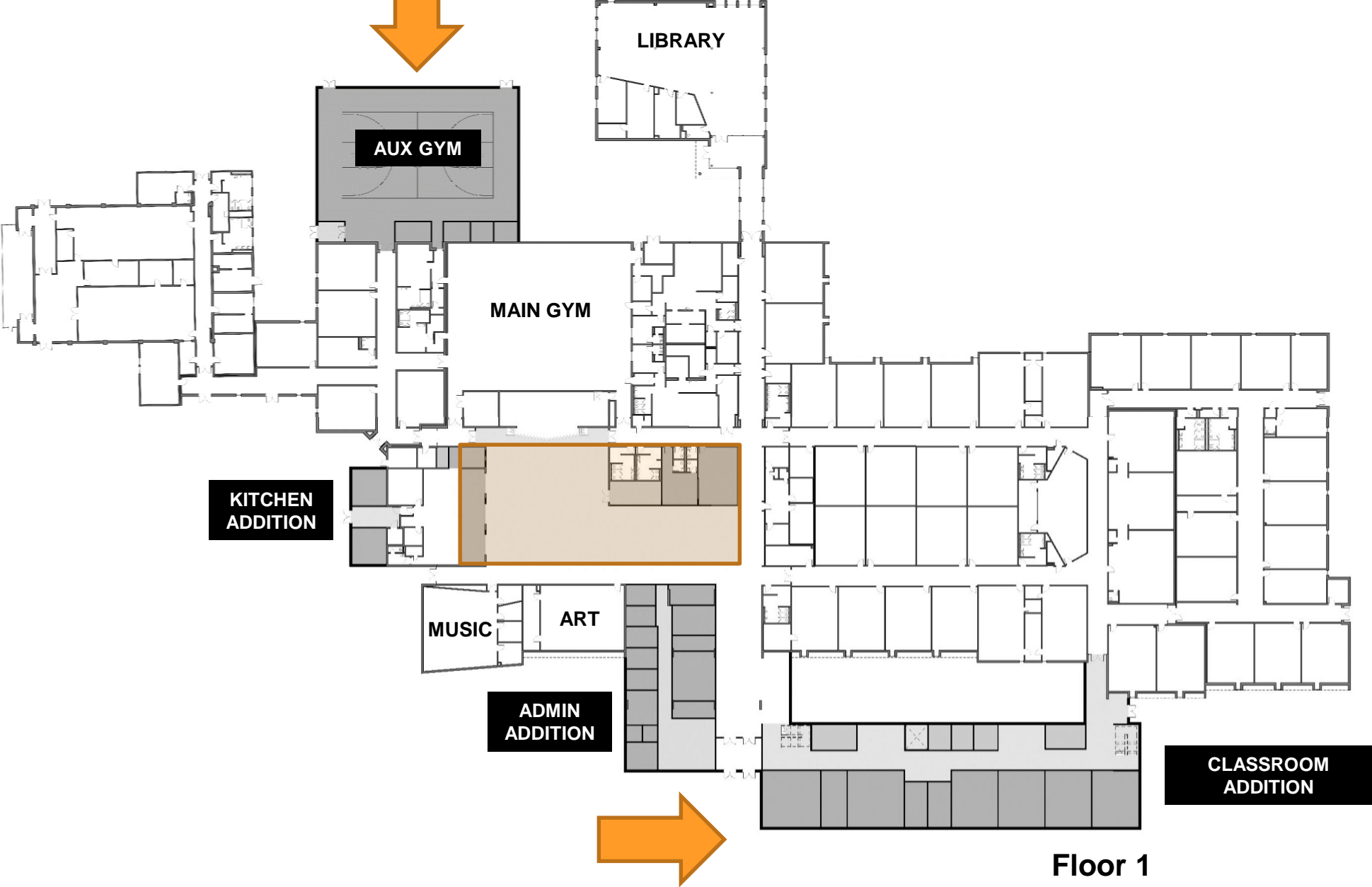


# Concept design study – classroom addition in front





# Concept design study – preferred option



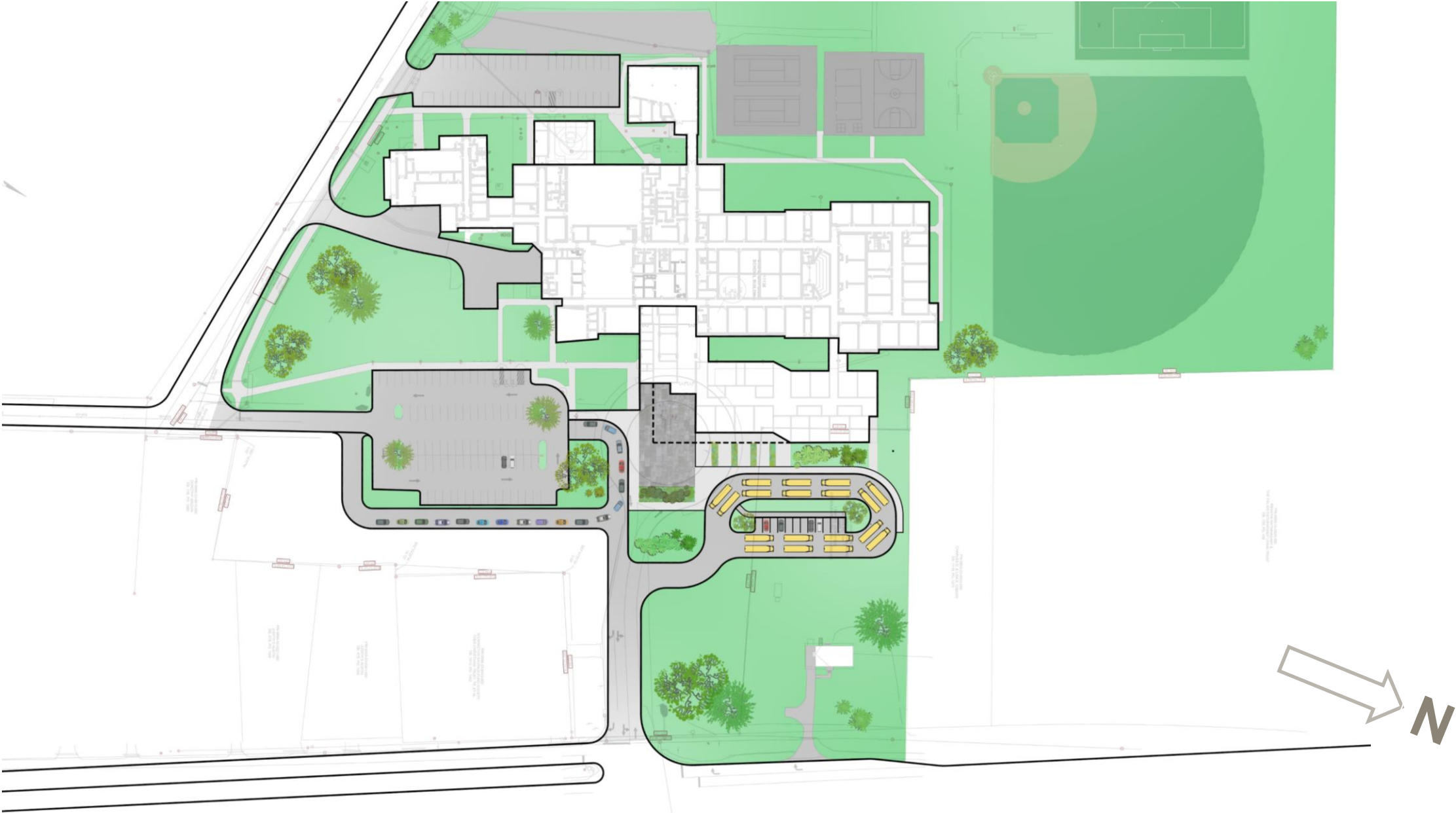
# Schematic design

---

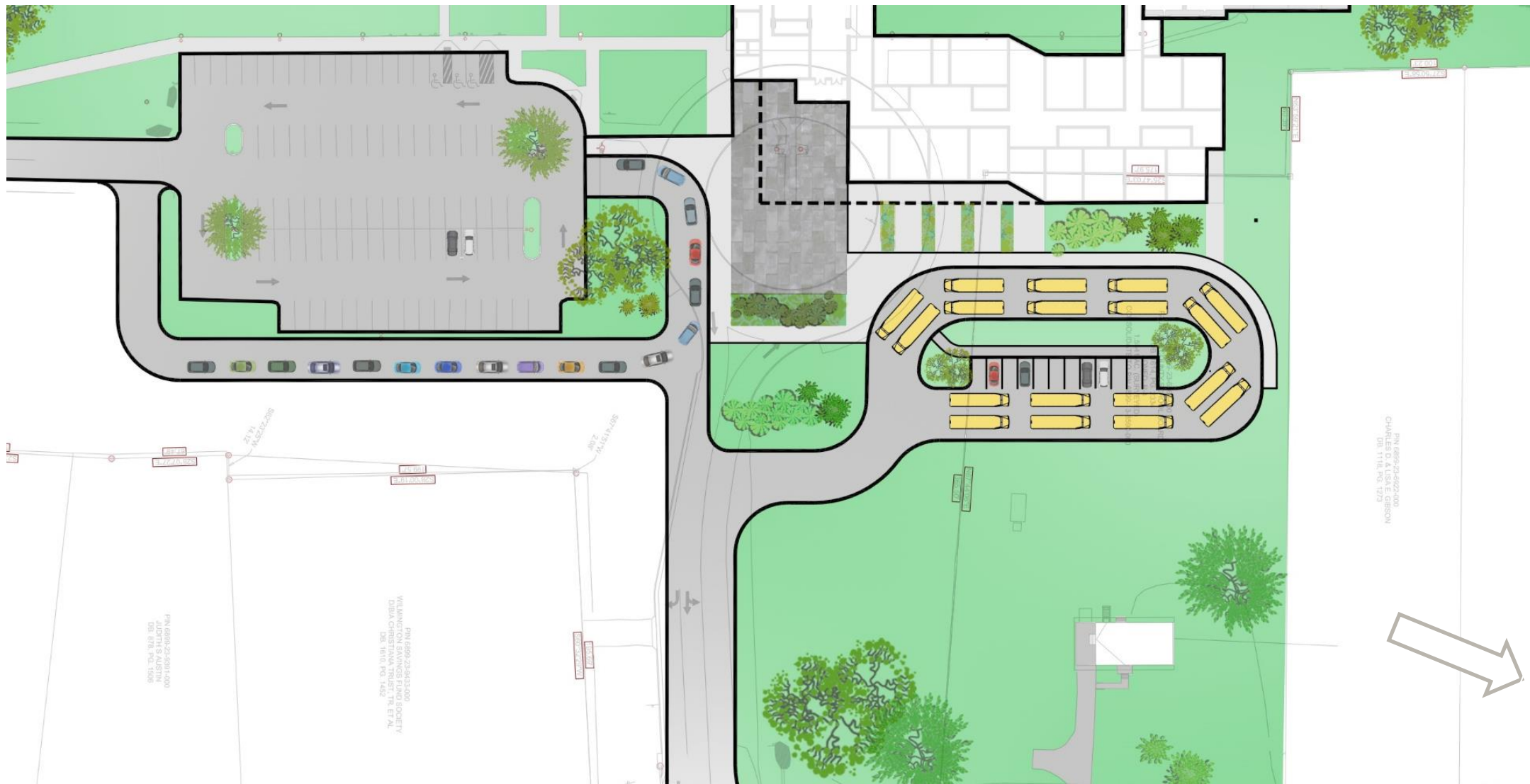




# Schematic site plan



# Schematic site plan - enlarged





# Schematic design

---

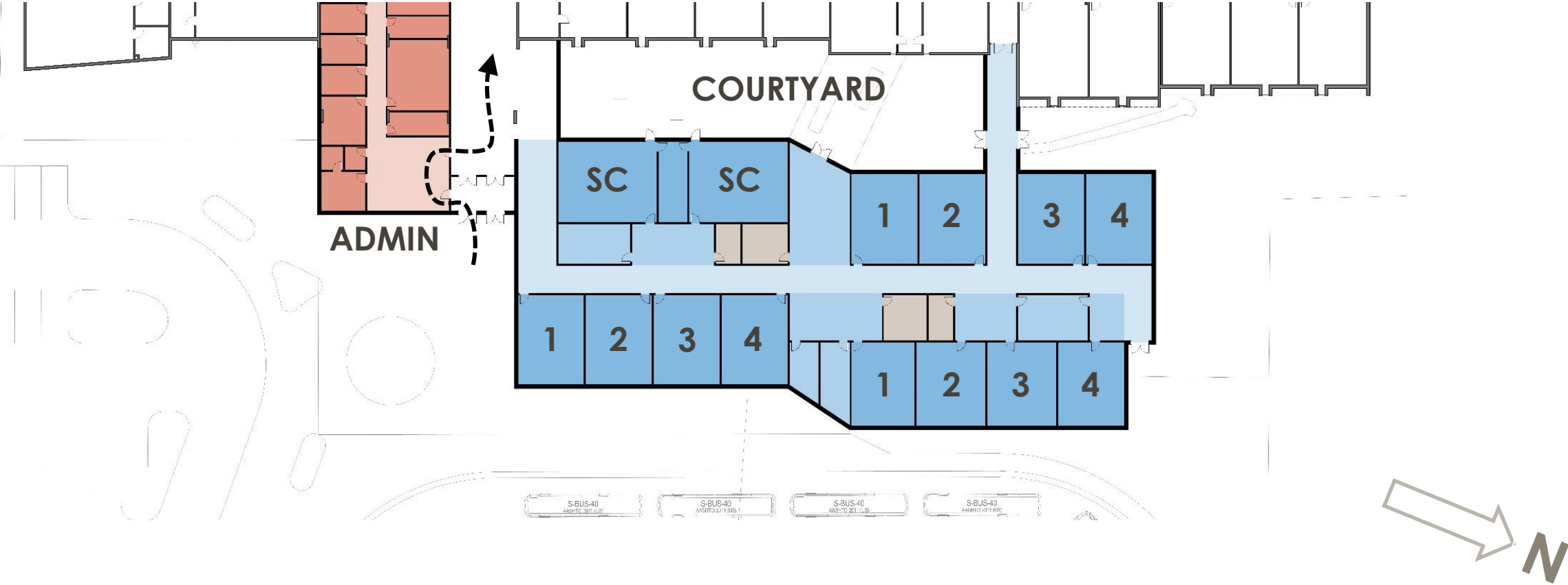


# Schematic design – one-story classroom addition

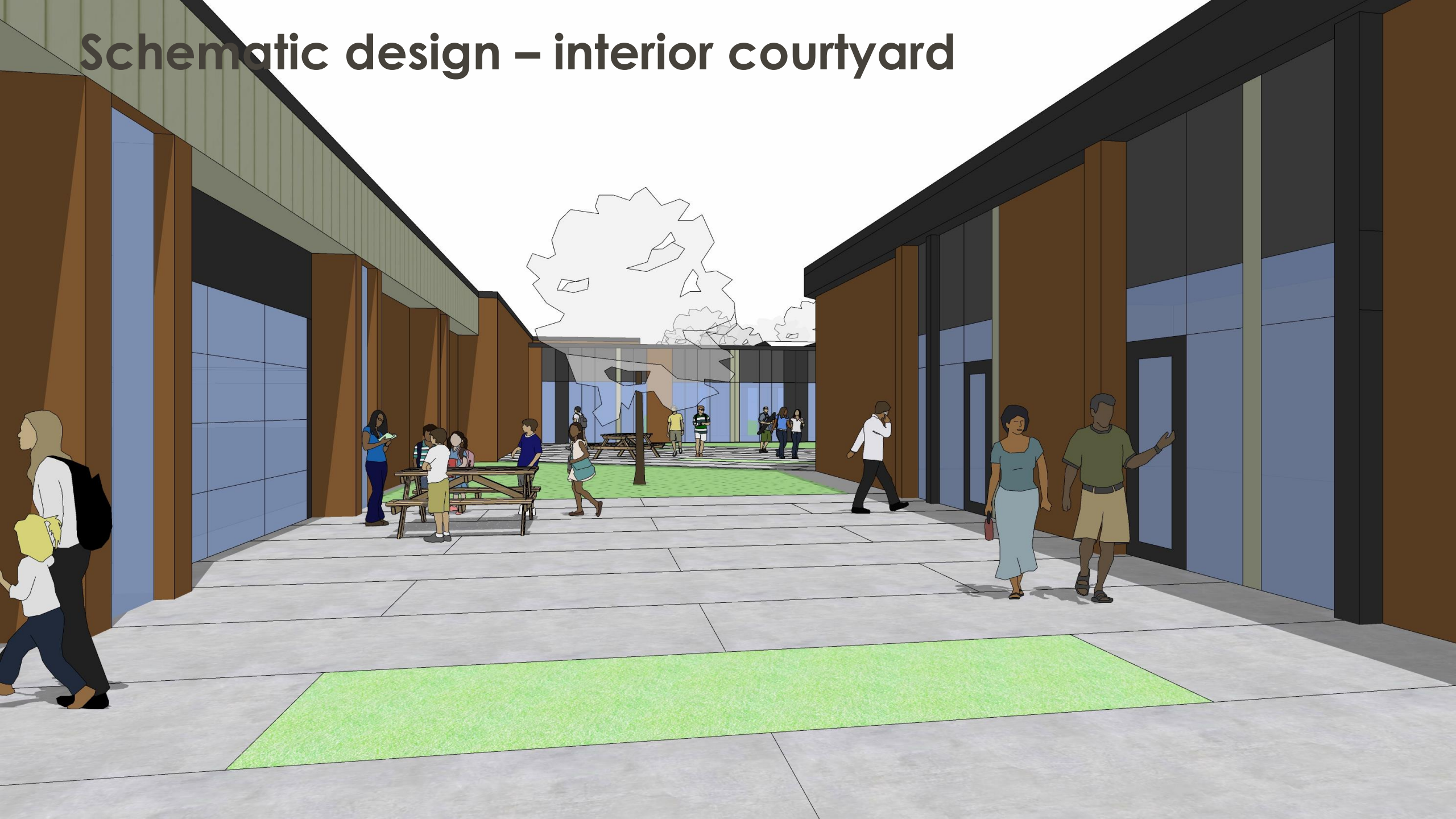




# Schematic design – one-story classroom addition

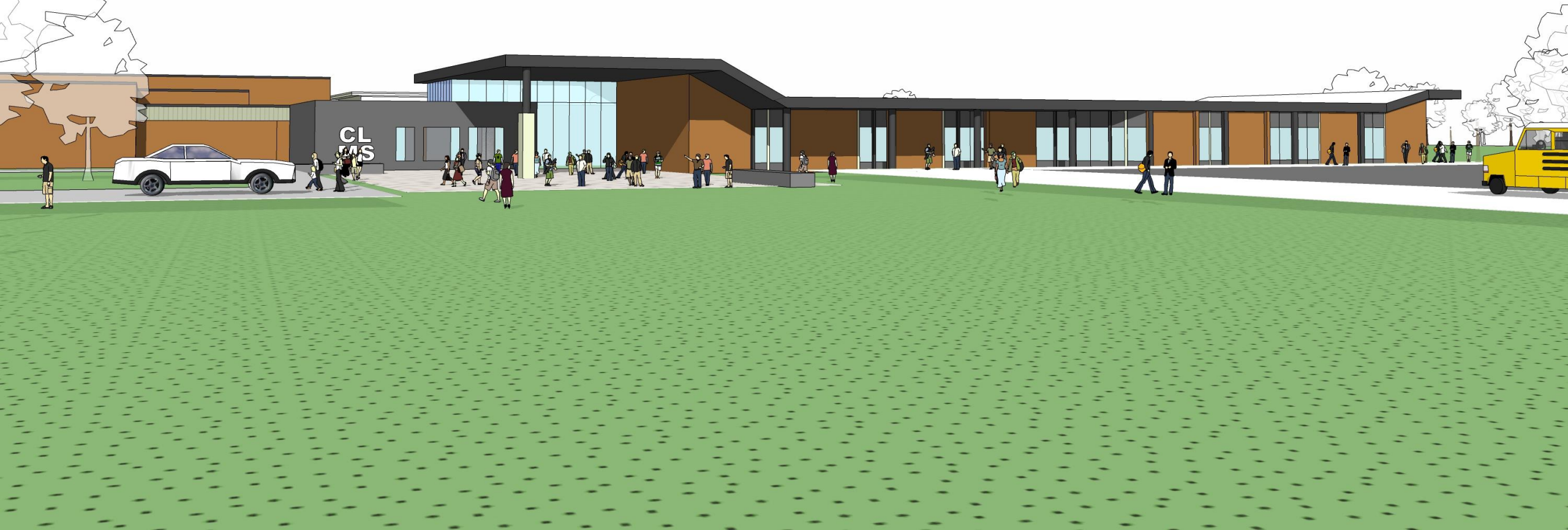


# Schematic design – interior courtyard





# Schematic design – classroom addition

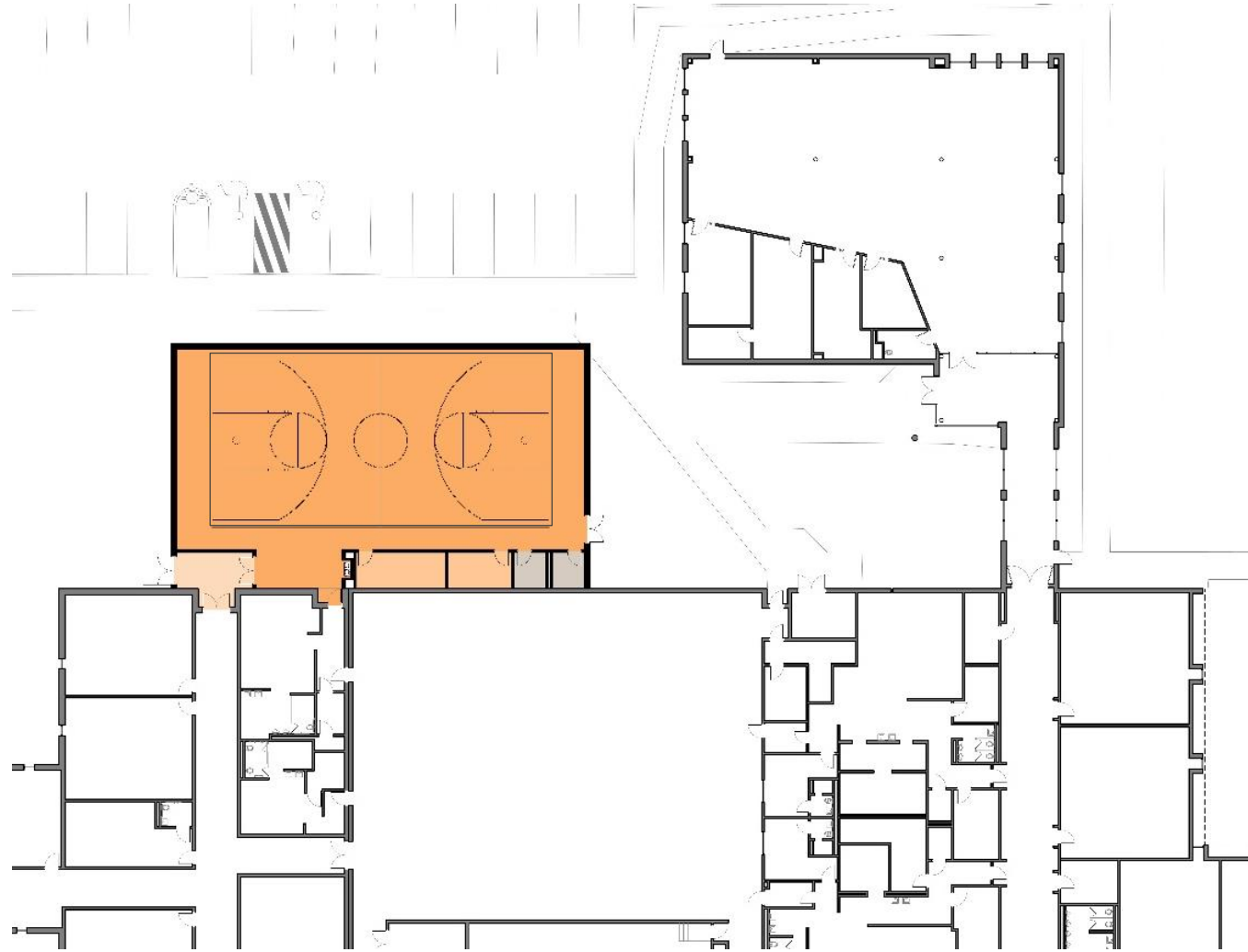


# Schematic design – gymnasium addition





# Schematic design – gymnasium addition

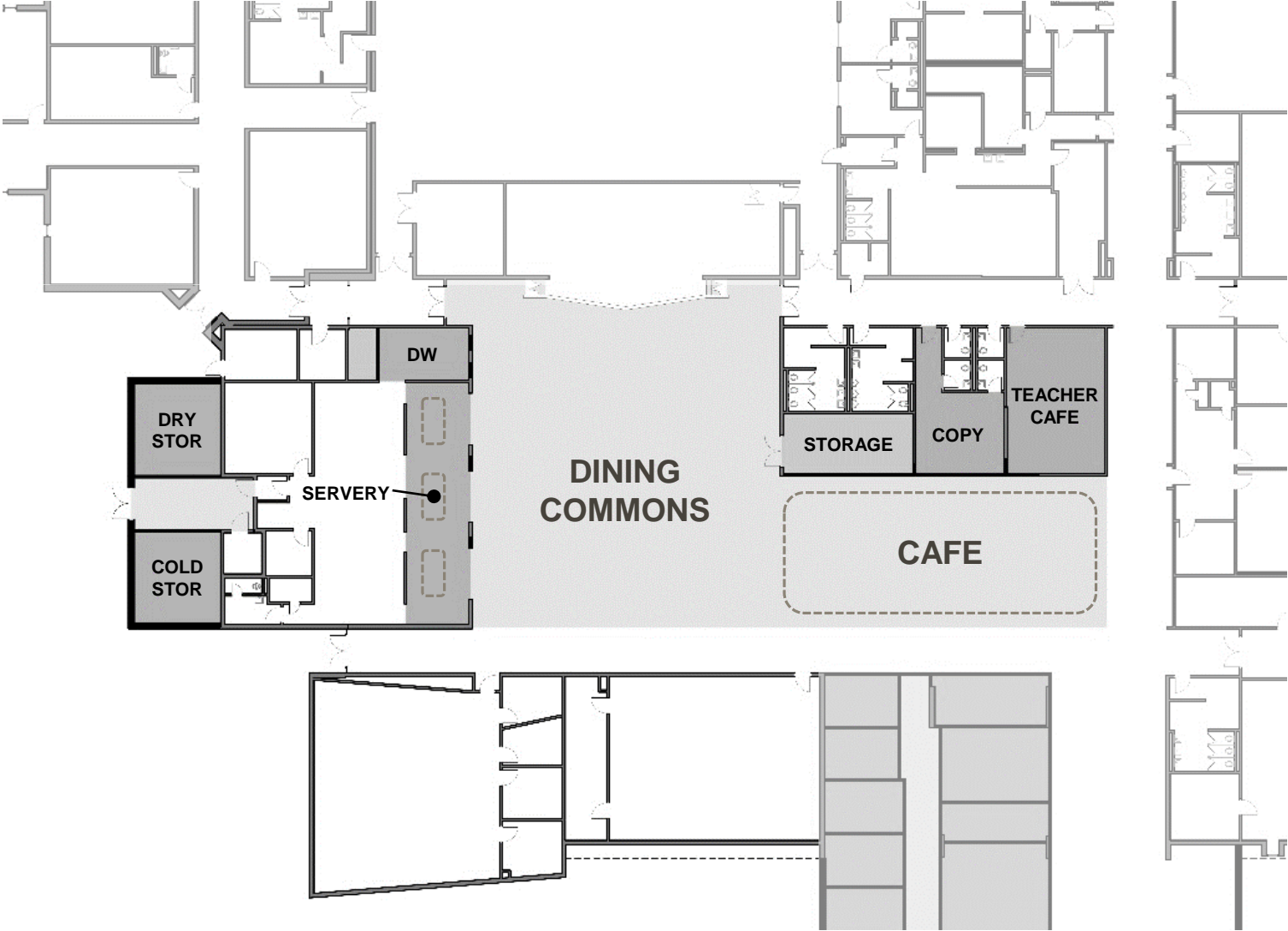


# Schematic design – gymnasium addition





# Schematic design – cafeteria expansion + servery

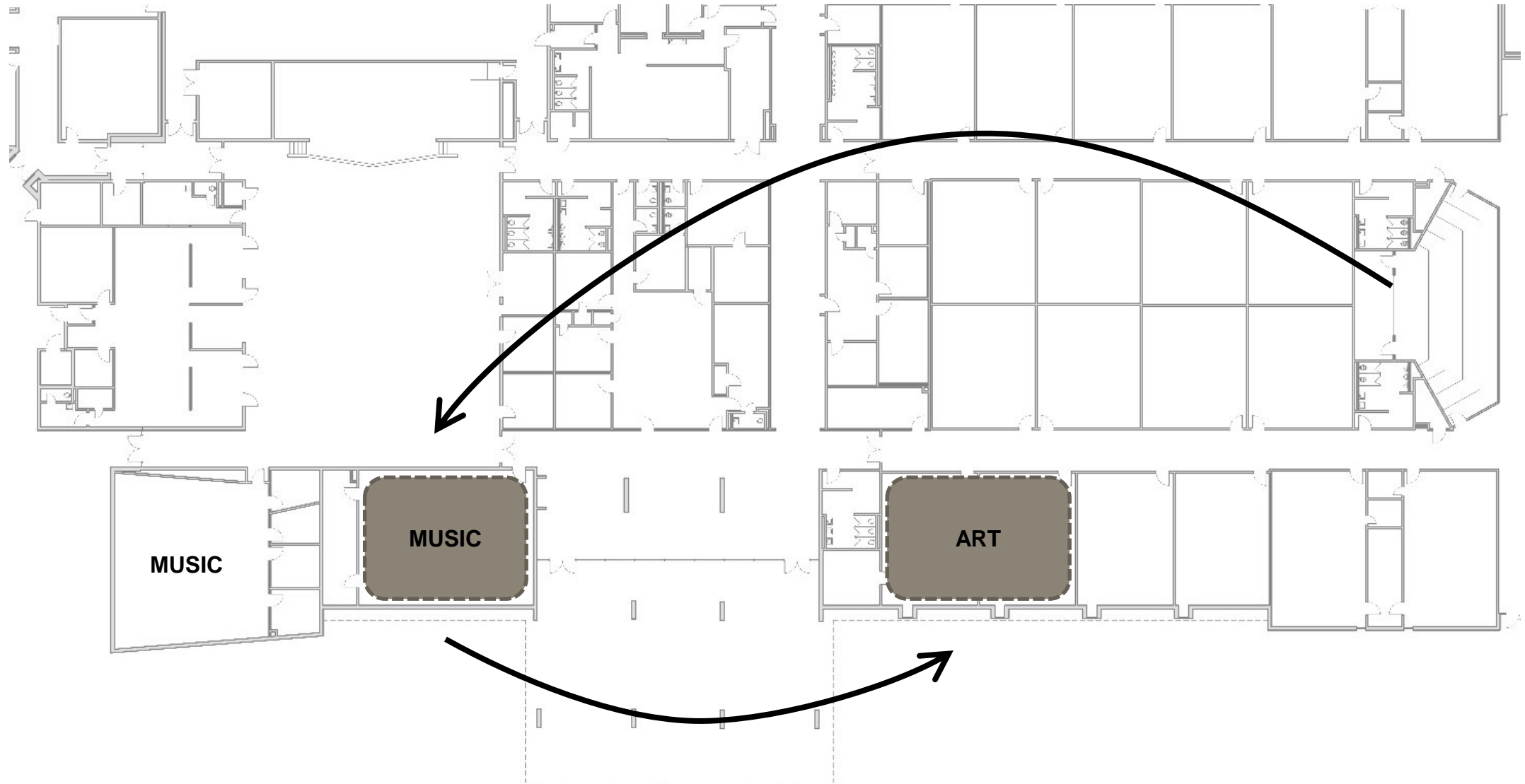


# Schematic design – cafeteria expansion + servery





# Schematic design – what if...?



The background image shows three students in a kitchen setting. They are wearing green aprons that have 'JMS' printed on them. One student is standing and looking down at something in their hands. Another student is standing behind them, also looking down. A third student is seated in the foreground, focused on operating a blender. The kitchen has white cabinets, a countertop with various items, and a sink area. The entire image has a yellow-green color overlay.

# Cedar Lee MS

Fauquier County Public Schools

## Questions?