



# **2019 Bond: Preliminary Phase I Plan 2020-2030**

Emile Lauzzana, Executive Director, Capital Projects

▶ **AAPS serves:**

- An area of 125 square miles that includes the City of Ann Arbor and parts of eight surrounding townships:

- Ann Arbor, Lodi, Northfield, Pittsfield, Salem, Scio, Superior and Webster townships

▶ **AAPS owns and maintains:**

- ✓ 35 buildings including 32 schools
- ✓ 3.4 million square feet
- ✓ 723 acres



# Review of the 2019 Bond Campaign Commitments



# Phase 1 Bond Plan - 2020-2030

## Presentation Overview:

- Review bond campaign commitments
- Phase 1 Bond Plan - Overview
  - Early construction projects at every school
  - Summer construction projects
  - Staging facility construction
  - Major construction projects
  - Support infrastructure, furnishings and equipment
- Map of staging plan and major construction projects
- Investment timelines by sector and level
- Community engagement opportunities
- Supporting documents development
- Next steps



# Bond Campaign Language

The Ann Arbor Public Schools (AAPS) serves 18,000 children in the city of Ann Arbor and surrounding townships; covers 125 square miles; is responsible for 35 buildings with an average age of 64 years; is composed of 3.4 million square feet; and rest on 723 acres in neighborhoods.

*The Ann Arbor Public School community values a quality education for every child. AAPS students perform at academically high levels, are taught by high-performing teachers, enjoy quality programs, and are supported by engaged parents and the community.*

**On November 5, 2019, voters in the Ann Arbor Public Schools approved a bond proposal to upgrade school facilities and sites, enhance existing building security, and provide upgraded and sustainable learning environments throughout our district.**

# Ballot Language

Shall the Public Schools of the City of Ann Arbor, County of Washtenaw, Michigan, borrow the principal sum of not to exceed One Billion Dollars (\$1,000,000,000) and issue its general obligation unlimited tax bonds for the purpose of defraying the cost of making the following improvements:

- ***constructing additions to and/or remodeling School District buildings, including safety and security improvements, classrooms, laboratories, kitchens, performing arts and pool facilities, and solar, geothermal and other renewable energy improvements;***
- ***acquiring and/or constructing buildings in the School District, including elementary, middle and high schools;***
- ***equipping, furnishing, reequipping and refurnishing buildings in the School District, including the acquisition of school buses and musical instruments;***
- ***acquiring and installing instructional technology equipment in the School District;***
- ***and acquiring, improving and developing sites, including athletic fields, facilities, structures, parking and playgrounds***



# 2019 BOND PREPARING FOR THE FUTURE

## TEACHING & LEARNING

Continue the Tradition of  
Academic Excellence

## SAFETY, HEALTH & WELLBEING

Focus on Development of  
the Whole Child

## SUSTAINABLE & ENVIRONMENTALLY RESPONSIBLE INFRASTRUCTURE

Create Resilient Schools  
for Climate Change

## EFFICIENT & EFFECTIVE SUPPORT SYSTEMS & SERVICES

Continue Technology &  
Transportation Replacement and  
Renewal

**GOAL****TEACHING & LEARNING**

*Continue the Tradition of Academic Excellence*

**KEY THEMES**

- Support flexible and engaging learning environments that promote collaboration, hands-on, inquiry-based learning, whole and small group instruction, and appropriate accommodations for all students
- Expand opportunities for applied learning such as STEAM, CTE, coding, and robotics
- Build upon long-standing environmental education program with new curricula and instructional models
- Continue our work to create universally designed and inclusive learning environments
- Support blended and online virtual learning
- Enable co-teaching between core classroom teachers and support staff for a vibrant and effective multi-tiered system of support
- Support multiple educational models including early learning, virtual learning, adult learning, and community college
- Maintain smaller class sizes for an effective teaching and learning environment
- Continue to enhance opportunities for music and art education
- Update environments to include: natural light, air quality, sound
- Ensure quality learning environments in every classroom

**SUPPORTING  
INFRASTRUCTURE**

- Upgrade all classrooms to update lighting, thermal, acoustical and air quality environments with more user/teacher control
- Create STEAM/Makerspaces in all schools
- Improve support spaces, amenities, and equipment for music and the arts
- Continue flexible furniture purchases for art, music, science and other learning spaces
- Address current and projected student enrollment by providing additional space in schools, particularly elementary schools at or near capacity
- Improve and create spaces for one-on-one and small group activities including: project-based learning, counseling, tutoring, speech therapy, nurses and others
- Provide spaces, equipment and furnishing for music and the arts, including improved performance spaces
- Provide spaces that are customized to meet the identified social, emotional and physical needs of students
- Provide additional storage for student personal items
- Create updated Career & Technical Education (CTE) environments, including life management studios at all high schools
- Upgrade classrooms and office space at Freeman Environmental Education Center to ensure accessibility for all AAPS students



**GOAL****SAFETY, HEALTH & WELL-BEING***Focus on Development of the Whole Child***KEY THEMES**

- Ensure safe and secure schools as centers of the community
- Ensure safe drinking water and quality air
- Provide healthy local food in the cafeterias
- Provide opportunities for students to engage in on-site gardening and food production
- Enhance food security for vulnerable populations
- Provide opportunities for all students to enjoy physical activity in formal and informal settings
- Repair and modernize playgrounds and athletic facilities, renovating and expanding where needed

**SUPPORTING  
INFRASTRUCTURE**

- Create secure school entrances that provide for access control and secure entry
- Install monitoring devices on all exterior doors
- Update and modernize security camera systems, adding cameras as needed
- Improve school grounds to provide separation of pedestrian, bicycle, car and bus traffic
- Continue updating water systems and air distribution systems for maximum air and water quality
- Replace or improve fire protection/sprinkler systems in all schools
- Designate and/or construct gender neutral restrooms
- Expand and renovate elementary and middle school kitchens to allow healthy “scratch” cooking and more variety
- Provide improved lighting, updated equipment for enhanced line flow, and other improvements for dining environments (multi-purpose rooms and cafeterias)
- Support construction and maintenance of school gardens that include a dedicated water source and outdoor shaded classrooms
- Provide space for emergency food programs
- Replace or improve elementary “black top” spaces and basketball hoops
- Continue improvement of sports fields including baseball, softball, soccer and others
- Continue improvement of playgrounds; including age appropriate equipment, ADA/universal design equipment, and spaces for unstructured, creative play

**GOAL**

## Sustainable & Environmentally Responsible INFRASTRUCTURE

*Create Resilient Schools for Climate Change*

**KEY THEMES**

- Create optimized learning environments based on best practice and research to utilize natural and artificial light, ensure fresh air free from pollutants, maintain classroom temperature, and optimize acoustics for maximum cognitive function and productivity.
- Prepare our schools to adapt to climate change and act as centers of neighborhood resiliency and to maintain critical life-support conditions in the event of extended power loss, heating fuel or water
- Chart a course for carbon neutrality
- Create a culture that supports recycling and composting
- Promote bio-diversity and healthy sites
- Utilize interior and exterior finishes that are long-lasting and require minimal maintenance and replacement
- Utilize the Freeman Environmental Education Center for demonstration of sustainable grounds practices that tie to Environmental Education programming

**SUPPORTING  
INFRASTRUCTURE**

- Renovate all classrooms with modern systems that provide human-centric lighting, thermal, and acoustic environments with user/teacher control
- Design building systems for disaster resilience and passive survivability including provisions for backup power
- Install solar energy systems
- Utilize more efficient electric heating and cooling systems including geothermal/ground-source heat pumps and variable refrigerant flow
- Install dimmable LED lighting
- Upgrade bus fleet with more fuel-efficient vehicles as new technology advancements allow
- Create spaces in schools for the collection of recyclables and compost materials and exterior collection points for service providers
- Create bio-diverse ecologies on school grounds that support local ecosystems and manage storm water
- Specify durable long life-cycle materials, equipment and finishes with low to no toxicity
- Install water management systems, gardens, and other grounds projects at the Freeman Environmental Education Center



**GOAL:****Efficient and Effective  
SUPPORT SYSTEMS & SERVICES***Continue Technology and Transportation Replacement & Renewal***KEY  
THEMES**

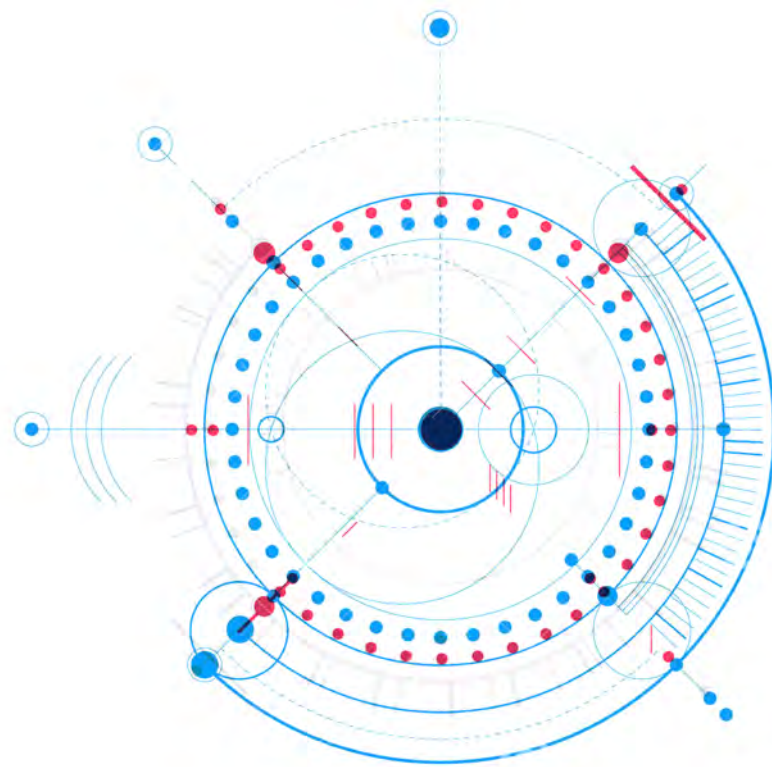
- Provide appropriate technology for our students to develop the skills and attributes they need to meet their individual goals
- Ensure our teachers are supported with appropriate classroom technology
- Transform media centers to support digital learning and collaborative pedagogy
- Provide needed spaces for custodial and other building support services

**SUPPORTING  
INFRASTRUCTURE**

- Continue regularly scheduled laptop replacement program
- Add new state-of-the-art classroom devices / equipment to support curriculum goals
- Renovate media centers to support digital learning and collaboration
- Continue bus fleet replacement schedule to reduce repair costs and promote bus fleet safety
- Provide improved custodial, information technology, public address, and audio/visual support spaces



# Preliminary Bond Phase 1 Plan 2020-2030



# Bond Phase 1 Plan Draft

Components of the Bond Phase 1 Plan over the next 20 years include:

- Early construction projects at every school
- Summer construction projects
- Staging facility construction
- Major construction projects
- Support infrastructure projects, furnishings, and equipment



# Early Projects at Every School

Early Projects will include:

- *Solar and other renewable energy sources*
- *Air conditioning and air quality improvements*
- *Energy efficient LED lights*
- *Outdoor learning enhancements*
- *Music, arts, science, and athletics improvements*
- *Small group and special needs learning spaces*
- *Continued replacement and enhancement of:*
  - ✓ *Musical instruments and furnishings*
  - ✓ *Building management system upgrades*
  - ✓ *Bus fleet and technology replacement*
  - ✓ *Paving and stormwater management*
  - ✓ *Roofing systems maintenance*



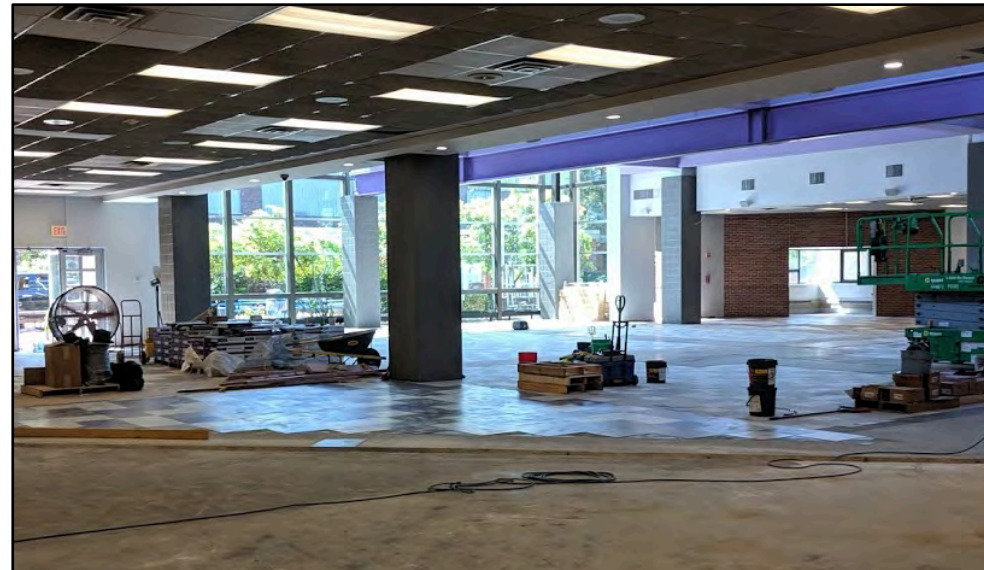
# Intermediate Summer Projects

- **Intermediate Summer Projects** are included for schools whose major project occurs later in the plan.
- They will provide custom designed improvements for each school based on their particular needs.
- Care will be taken to protect investments made before a school's major project.



Bryant Elementary

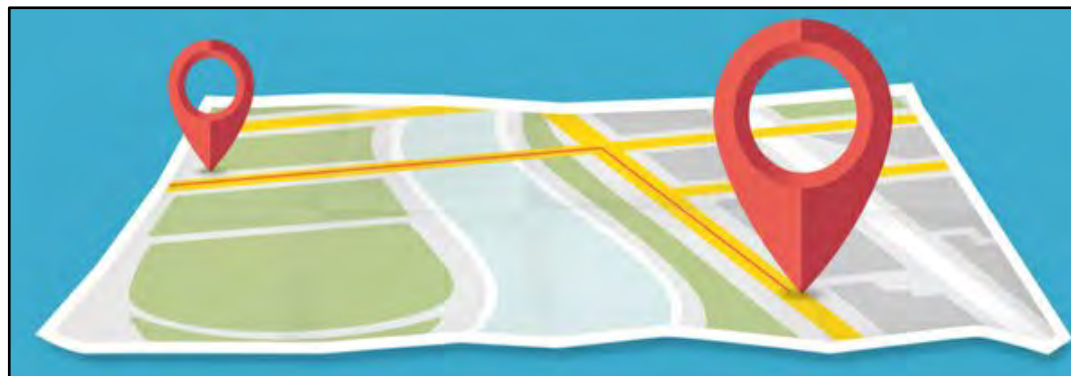
2019 Bond: Preliminary Phase I 2020-2030 | December 2, 2020



Pioneer High School

# Staging School Construction

- *With an average age of 64 years, some AAPS school buildings need extensive work that is not feasible to complete while the school is occupied and requires longer than the short summer recess to complete.*
- Staging Locations will provide for temporary relocation of a school while construction activities are completed at the home school location.
- The plan includes staging locations in each quadrant of the city to be utilized over the next 10 years to complete major projects at all AAPS elementary and K-8 schools.





# Major Projects

**Major Projects** are planned for every school to create vibrant, sustainable, and programmatically enhanced learning environments for this and future generations.

As promised in the bond campaign, each school community will have the opportunity to be engaged in the design process for their school's major project.

**Major Project Considerations** will be developed for each school to evaluate whether a school building will be replaced, undergo a deep retrofit, or a combination that preserves parts of the building and replaces others.

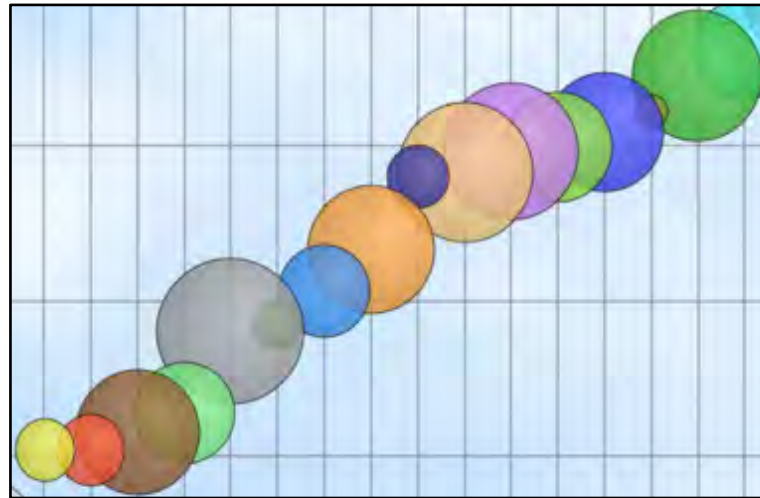
Evaluation criteria will include:

- Academic program implications
- Construction first cost and operating costs
- Impacts on health, wellbeing and universal access
- Environmental sustainability, including embodied carbon and operating carbon emissions



# School Investment Prioritization Considerations

- *Capital Investment Needs*
- *Matriculation*
- *Housing Development*



# School Prioritization - Capital Needs

BUILDING + CAPITAL INVESTMENT NEEDS		BUILDING + CAPITAL INVESTMENT NEEDS	
Elementary and K-8		High School	
School / Location	10-Year \$/SF	School / Location	10-Year \$/SF
Carpenter	\$ 283	Community	\$ 176
Mitchell	\$ 260	Pathways	\$ 175
Dicken	\$ 243	Pioneer	\$ 149
Burns Park	\$ 195	Huron	\$ 138
Wines	\$ 192	Skyline	\$ 119
Angell	\$ 186		
Eberwhite	\$ 177	BUILDING + CAPITAL INVESTMENT NEEDS	
Logan	\$ 174	Middle School	
Lakewood	\$ 173	School / Location	10-Year \$/SF
King	\$ 163	Slauson	\$ 146
A2 STEAM	\$ 162	Clague	\$ 143
Bach	\$ 147	Scarlett	\$ 129
Thurston	\$ 141	Tappan	\$ 128
Pittsfield	\$ 136	Forsythe	\$ 116
Lawton	\$ 134		
Abbot	\$ 130		
AA Open	\$ 116		
Haisley	\$ 111		
Pattengill	\$ 102		
Bryant	\$ 101		
Allen	\$ 55		

Work at AAPS schools will be prioritized based in part on capital investment needs. The Facilities Condition Assessment conducted by outside experts identified the level of investment needed at each school to maintain the building in good to excellent condition over the next 10 years.



# School Prioritization - Matriculation

With the highest level of investment need at the elementary level, the plan begins with major projects at elementary schools.

To minimize disruptions to students' academic careers, the plan then proceeds to major projects at high schools and concludes with major projects at middle schools, so elementary students are less likely to again be disrupted by construction while at middle school and high school.

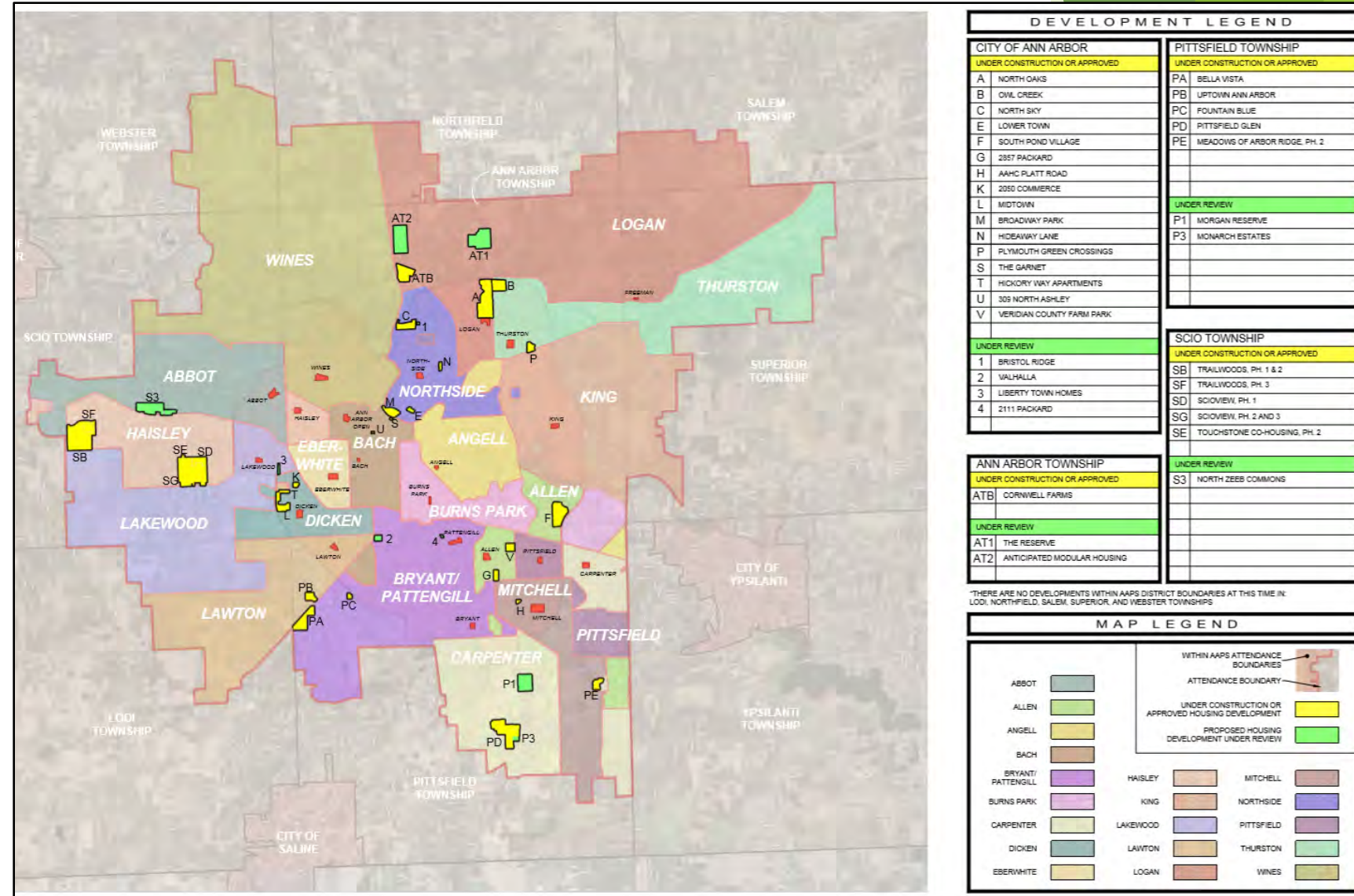
Recognizing that middle schools are late in the AAPS Bond Plan, all 5 middles schools will receive significant renovations over the next 4 years including:

- School-wide air conditioning and ventilation improvements
- New lights and ceilings
- Fire suppression sprinkler system



# School Prioritization - Housing Development

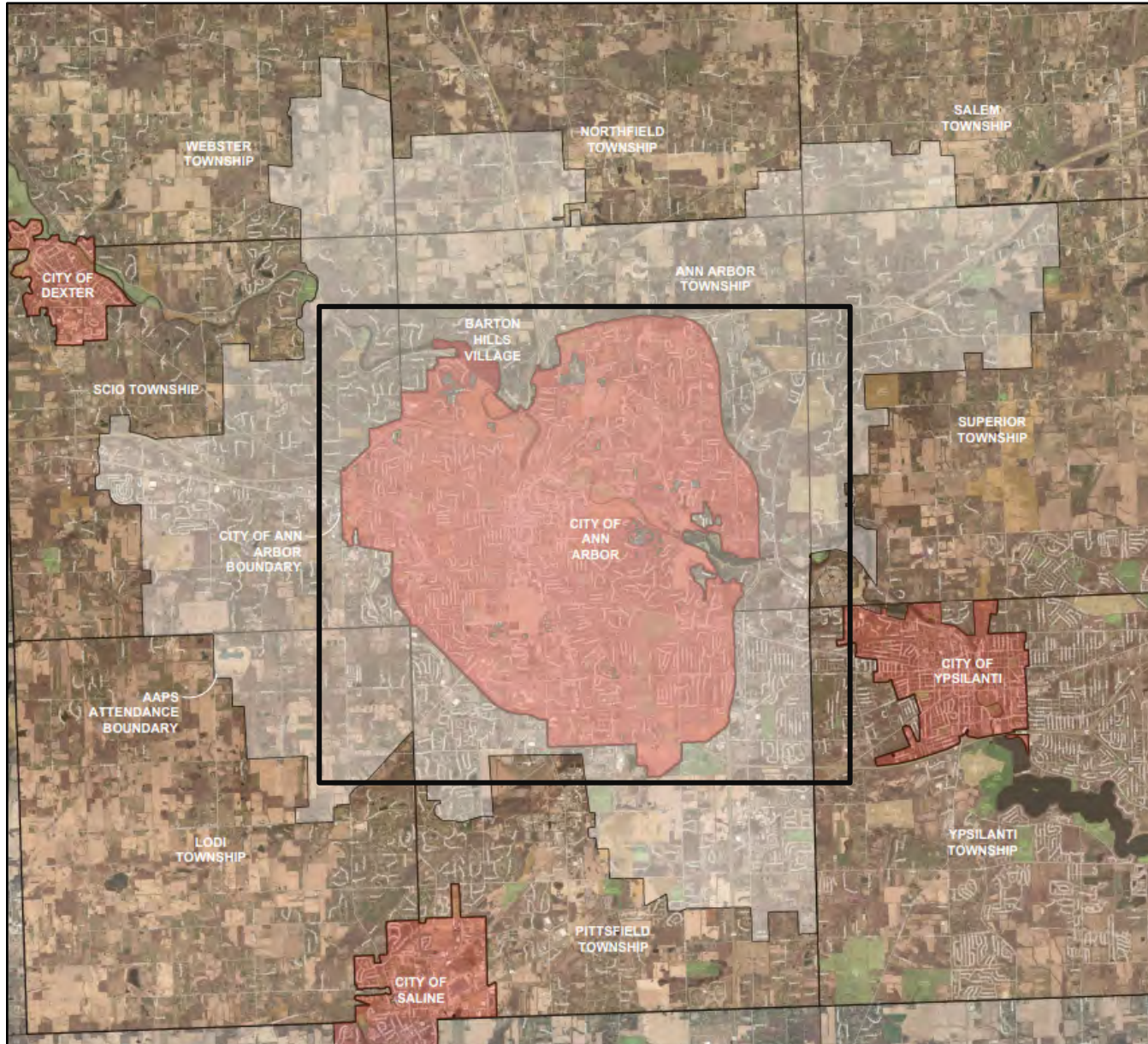
Investment at AAPS schools will also be prioritized based on anticipated enrollment growth. An updated housing development study is being conducted to confirm housing growth patterns revealed in previous studies.



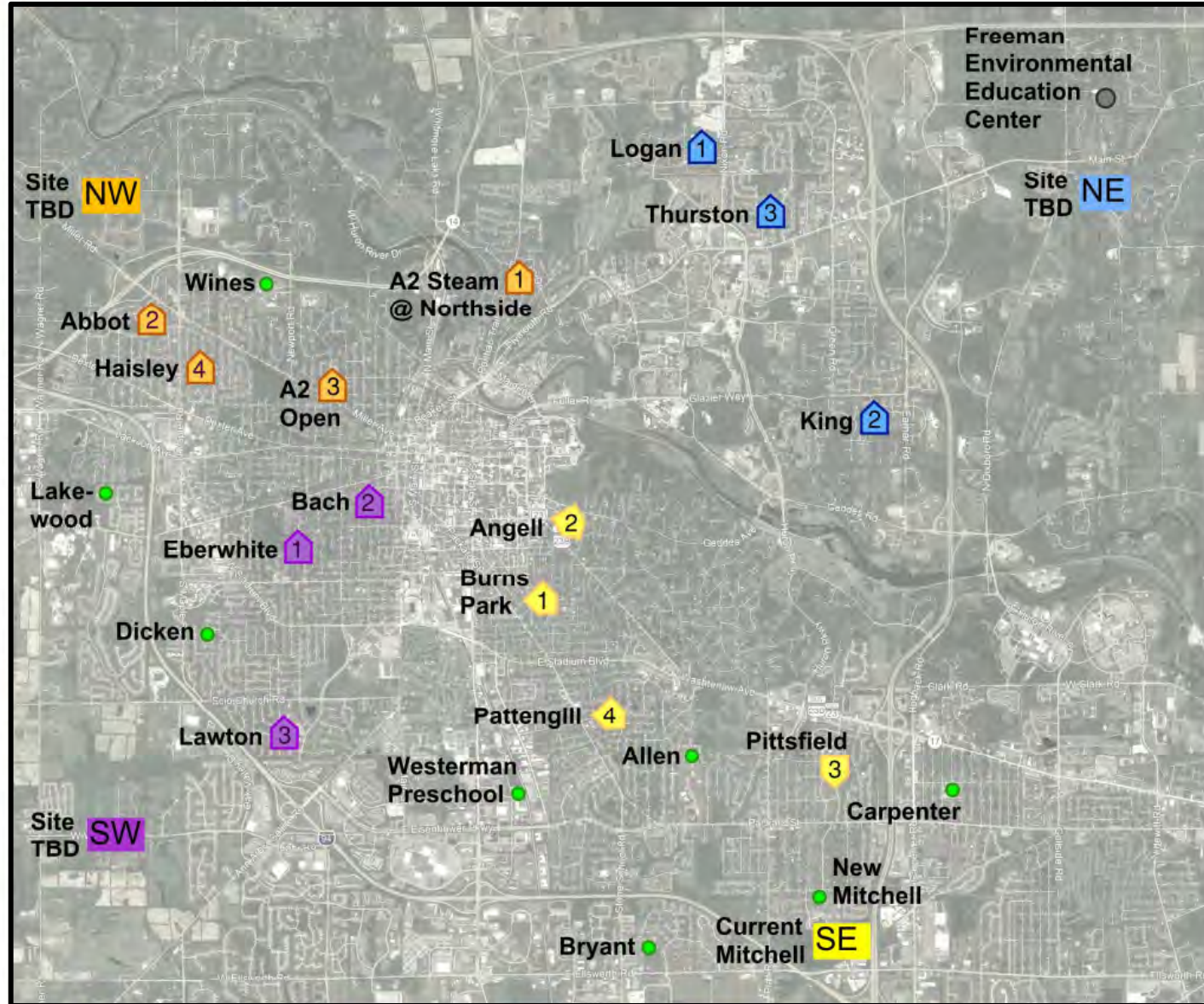
\* Housing developments shaded **Yellow** are under construction, those in **Green** are in planning review



# AAPS Attendance Boundary

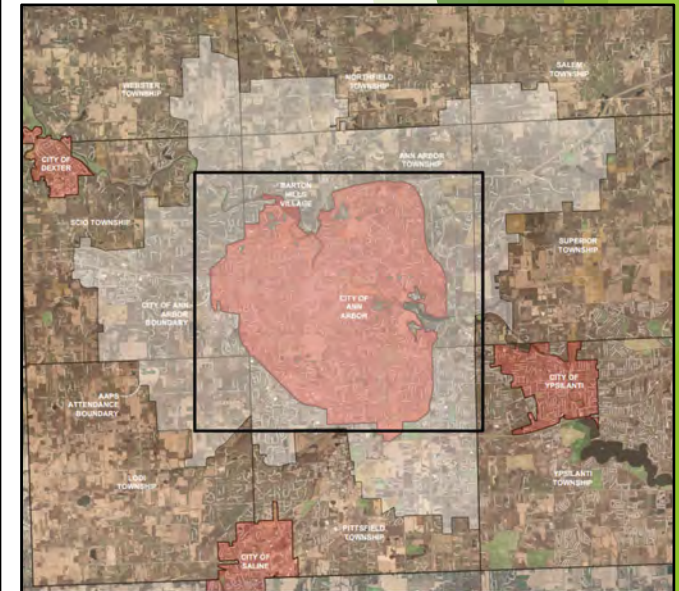


# Staging Plan - Phase 1 Bond Plan 2020-2030



<b>Legend</b>	<b>SE</b> Current Mitchell used for Staging once New Mitchell is constructed on the same site.	<b>SW Site TBD</b> SW Staging Location at Site TBD	<b>NE Site TBD</b> NE Staging Location at Site TBD	<b>NW Site TBD</b> NW Staging Location at Site TBD	Building that Does not Stage	<b>3</b> School which stages at Staging School (by color, in order of # shown)
---------------	---	---	---	---	------------------------------	---

draft



# Overall AAPS Bond Plan 2020-2030

## Elementary Schools

School / Building	2021	2022	2023	2024	2025	2026	2027	2028	2029	2030	2031	2032	2033	2034	2035	2036	2037	2038	2039	2040
<b>Southwest</b>																				
Carpenter Elementary	AC and Lighting					Major Project (Does not stage)														
Burns Park Elementary	AC and Lighting	Paving			Major Project (Stages at NE Mitchell)															
Angell Elementary	AC and Lighting					Major Project (Stages at NE Mitchell)														
Pittsfield Elementary		AC and Lighting and Paving	Outdoor Learning Enhancements				Major Project (Stages at NE Mitchell)													
Pattengill Elementary		Roofing and Paving		Outdoor Learning Enhancements				Major Project (Stages at NE Mitchell)												
Allen Elementary	Paving	Lighting	Outdoor Learning Enhancements						Major Project (Does not stage)											
Current Mitchell Elementary	AC and Lighting				Stages Burns Park	Stages Angell	Stages Pittsfield	Stages Pattengill												
New Mitchell Elementary	Project Planning		New Construction																	
<b>Northeast</b>																				
Logan Elementary	NE Sector Study	Paving	Outdoor Learning Enhancements	Lighting		Major Project (Stages at NE Mitchell)														
King Elementary	NE Sector Study		Outdoor Learning Enhancements	Lighting		Major Project (Stages at NE Mitchell)														
Thurston Elementary		Outdoor Learning, Paving, Roofing, Solar	AC and Lighting				Major Project (Stages at NE Mitchell)													
<b>Southwest</b>																				
Dicken Elementary	AC and Lighting plus Paving				Major Project (Does not stage)															
Lakewood Elementary	AC and Lighting					Major Project (Does not stage)														
Eberwhite Elementary		AC and Lighting	Paving	Outdoor Learning, Roofing and Solar		Major Project (Stages at NE Mitchell)														
Bach Elementary		AC and Lighting	Paving	Outdoor Learning Enhancements			Major Project (Stages at NE Mitchell)													
Lawton Elementary		Outdoor Learning Enhancements	AC and Lighting		Roofing	Paving			Major Project (Stages at NE Mitchell)											
Bryant Elementary	Roofing and Solar		Outdoor Learning Enhancements	Paving										Major Project (Does not stage)						
Southwest Staging Site			Project Planning		New Construction		Stages Eberwhite	Stages Bach	Stages Lawton	Transit Hub										
<b>Northwest</b>																				
Wines Elementary		AC and Lighting plus Paving	Roofing and Solar	Outdoor Learning Enhancements		Intermediate Summer Project														Major Project (Does not stage)
Abbot Elementary		Outdoor Learning Enhancements	Roofing and Solar	AC and Lighting			Intermediate Summer Project													Major Project (Stages at NE Mitchell)
Haisley Elementary		Outdoor Learning Enhancements	Paving	AC and Lighting				Intermediate Summer Project												Major Project (Stages at NE Mitchell)
Northwest Staging Site							Project Planning		New Construction		Stages Wines	Stages Abbot	Stages Haisley	Stages Wines	Stages Abbot	Stages Haisley				

## K-8s, Secondary Schools, and Other Buildings

Category	Building	2021	2022	2023	2024	2025	2026	2027	2028	2029	2030	2031	2032	2033	2034	2035	2036	2037	2038	2039	2040	
K-8s	A2 STEAM K8		Outdoor Learning Enhancements	AC and Lighting	Paving									Intermediate Summer Project							Major Project (Stages at NE Mitchell)	
	A2 Open K8			Lighting	Outdoor Learning Enhancements and Paving									Intermediate Summer Project								Major Project (Stages at NE Mitchell)
Middle Schools	Slauson Middle School			Upgrades, including AC, Lighting, Fire Suppression, Paving, Roofing, and Solar	Outdoor Learning Enhancements									Paving							Major Project (Stages TBC)	
	Clague Middle School			Upgrades, including AC, Lighting, Fire Suppression, Paving, Roofing, and Solar	Outdoor Learning Enhancements									Intermediate Summer Project								Major Project (Stages TBC)
	Scarlett Middle School			Upgrades, including AC, Lighting, Fire Suppression	Roofing, Solar and Paving									Outdoor Learning Enhancements								Major Project (Stages TBC)
	Tappan Middle School			Upgrades, including AC, Lighting, Fire Suppression, and Paving	Solar									Plaza and Cafeteria Renovations								Major Project (Stages TBC)
	Forsythe Middle School			Upgrades, including AC, Lighting, Fire Suppression, and Paving	Outdoor Learning Enhancements																	Major Project (Stages TBC)
High Schools	Pioneer High School		Lighting plus Roofing and Solar	Lighting plus Paving																		Major Project (Does not stage)
	Huron High School		Roofing	Paving										Lighting	Lighting							Major Project (Stages TBC)
	Skyline High School													Initial Summer Project								Final Summer Project
	Community High School			Upgrades, including AC, Lighting, Fire Suppression	Outdoor Learning Enhancements and Paving									Intermediate Summer Project								Major Project (Stages TBC)
	Pathways to Success																					Major Project (Does not stage)
Other Buildings	Preschool			Outdoor Learning, Roofing, and Solar										Paving								Final Summer Project
	Freeman			Paving	Outdoor Learning and Site Enhancements	Roofing and Solar	Lighting															
	Balas Bldg	Office Utilization Analysis																				
Transportation Bldg																					Final Summer Project	





# Southeast Elementary Schools

School	2021	2022	2023	2024	2025	2026	2027	2028	2029	2030			
<b>Carpenter Elementary</b>	A/C and Lighting					Major Project (Does Not Stage)							
<b>Burns Park Elementary</b>	A/C and Lighting	Paving			Major Project (Stages at Old Mitchell)								
<b>Angell Elementary</b>	A/C and Lighting				Major Project (Stages at Old Mitchell)								
<b>Pittsfield Elementary</b>		A/C and Lighting, and Paving	Outdoor Learning Enhancements			Major Project (Stages at Old Mitchell)							
<b>Pattengill Elementary</b>		Roofing and Paving		Outdoor Learning Enhancements			Major Project (Stages at Old Mitchell)						
<b>Allen Elementary</b>	Paving	Lighting	Outdoor Learning Enhancements					Major Project (Does Not Stage)					
<b>Bryant Elementary</b>	Roofing and Solar		Outdoor Learning Enhancements	Paving					Major Project (Does Not Stage)				
<b>Current Mitchell Elementary</b>	A/C and Lighting				Staging Prep	Stages Burns Park	Summer	Stages Angell	Summer	Stages Pittsfield	Summer	Stages Pattengill	
<b>New Mitchell Elementary</b>	Project Planning		New Construction										

Southeast



\*Note - Major Project Planning begins 18-24 months prior to the start of construction



# Northeast Elementary Schools

	School	2021	2022	2023	2024	2025	2026	2027	2028	2029	2030
Northeast	Logan Elementary	NE Sector Study	Paving	Outdoor Learning Enhancements	Lighting		Major Project (Stages at NE Staging Site)				
	King Elementary			Outdoor Learning Enhancements	Lighting			Major Project (Stages at NE Staging Site)			
	Thurston Elementary		Outdoor Learning, Paving, Roofing, Solar	A/C and Lighting					Major Project (Stages at NE Staging Site)		



\*Note - Major Project Planning begins 18-24 months prior to the start of construction



# Southwest Elementary Schools

	School	2021	2022	2023	2024	2025	2026	2027	2028	2029	2030		
Southwest	Dicken Elementary	A/C and Lighting, plus Paving				Major Project (Does Not Stage)							
	Lakewood Elementary	A/C and Lighting				Major Project (Does Not Stage)							
	Eberwhite Elementary		A/C and Lighting	Paving	Outdoor Learning, Roofing and Solar		Major Project (Stages at New SW School)						
	Bach Elementary		A/C and Lighting	Paving	Outdoor Learning Enhancements		Major Project (Stages at New SW School)						
	Lawton Elementary		Outdoor Learning Enhancements	A/C and Lighting		Roofing	Paving		Major Project (Stages at New SW School)				
	Southwest Staging Site				Project Planning		New Construction		Stages Eberwhite	Summer	Stages Bach	Summer	Stages Lawton



\*Note - Major Project Planning begins 18-24 months prior to the start of construction



# Northwest Elementary Schools and K-8s

	School / Building	2021	2022	2023	2024	2025	2026	2027	2028	2029	2030	2031	2032	2033	2034			
Northwest	Wines Elementary		A/C and Lighting, plus Paving	Roofing and Solar	Outdoor Learning Enhancements		Intermediate Summer Project			Major Project (Does Not Stage)								
	Abbot Elementary		Outdoor Learning Enhancements	Roofing and Solar	A/C and Lighting			Intermediate Summer Project				Major Project (Stages at NW Staging Site)						
	Haisley Elementary		Outdoor Learning Enhancements	Paving	A/C and Lighting				Intermediate Summer Project					Major Project (Stages at NW Staging Site)				
	Northwest Staging Site							Project Planning		New Construction		Stages A2 Steam	Summer	Stages Abbot	Summer	Stages A2 Open	Summer	Stages Haisley

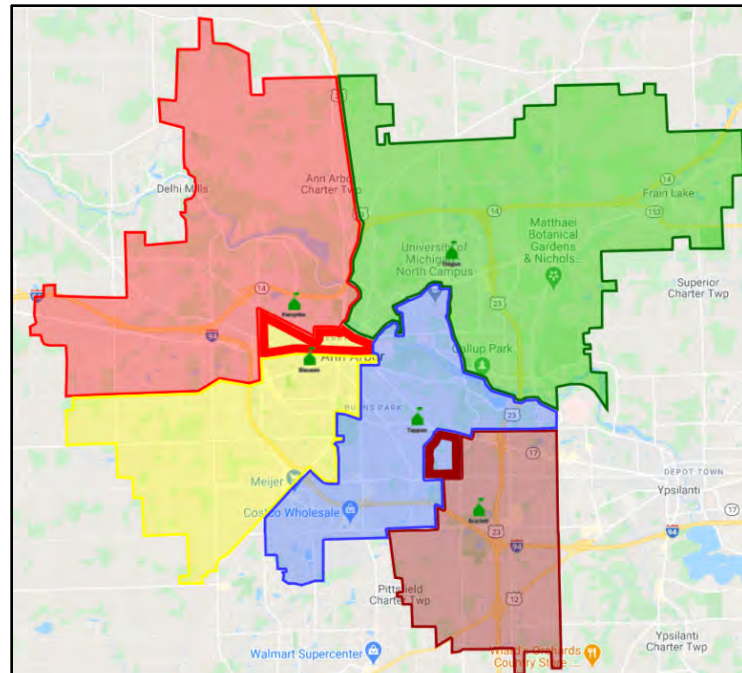
	School	2021	2022	2023	2024	2025	2026	2027	2028	2029	2030	2031	2032	2033	2034
K-8s	A2 STEAM K8		Outdoor Learning Enhancements	A/C and Lighting	Paving			Intermediate Summer Project			Major Project (Stages at NW Staging Site)				
	A2 Open K8			Lighting	Outdoor Learning Enhancements and Paving				Intermediate Summer Project				Major Project (Stages at NW Staging Site)		

\*Note - Major Project Planning begins 18-24 months prior to the start of construction



# Middle Schools

	School	2021	2022	2023	2024	2025	2026	2027	2028	2029	2030	2031	2032	2033	2034	2035	2036	2037	2038	2039
Middle Schools	Slauson Middle School			Renovation including Air Conditioning, Lighting, and Fire Suppression		Outdoor Learning Enhancements			Paving					Major Project (Staging TBD)						
	Clague Middle School		Renovation including A/C, Lighting, Fire Suppression, Paving, Roofing, and Solar			Outdoor Learning Enhancements				Intermediate Summer Project				Major Project (Staging TBD)						
	Scarlett Middle School	Renovation including Air Conditioning, Lighting, and Fire Suppression			Roofing, Solar, and Paving			Outdoor Learning Enhancements			Intermediate Summer Project					Major Project (Staging TBD)				
	Tappan Middle School	Renovation including Air Conditioning, Lighting, Fire Suppression, and Paving		Solar	Plaza and Cafeteria Renovations						Intermediate Summer Project							Major Project (Staging TBD)		
	Forsythe Middle School		Renovation including Air Conditioning, Lighting, Fire Suppression, and Paving			Outdoor Learning Enhancements						Intermediate Summer Project								Major Project (Staging TBD)

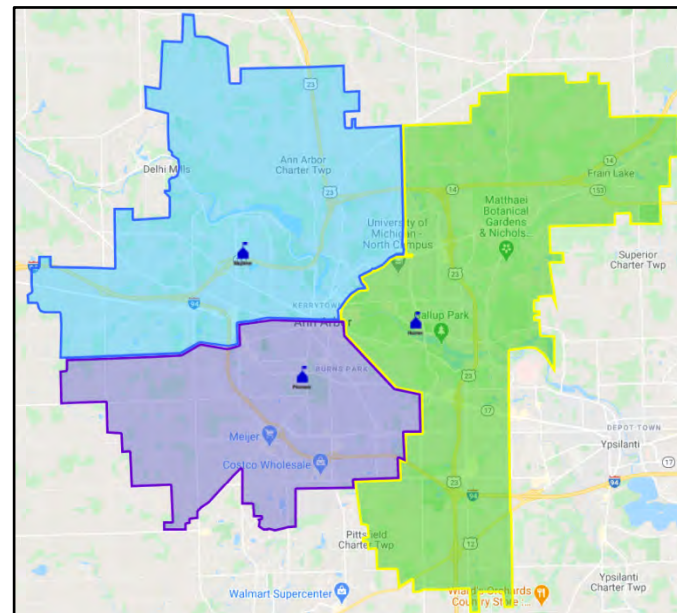


\*Note - Major Project Planning begins 18-24 months prior to the start of construction



# High Schools

	School	2021	2022	2023	2024	2025	2026	2027	2028	2029	2030	2031	2032	2033	2034
High Schools	Pioneer High School		Lighting, plus Roofing and Solar	Lighting, plus Paving						Major Project (Does not Stage)					
	Huron High School	Roofing	Paving		Lighting	Lighting			Intermediate Summer Project				Major Project (Staging TBD)		
	Skyline High School			Initial Summer Project					Intermediate Summer Project					Final Summer Project	
	Community High School	Renovation including Air Conditioning, Lighting, and Fire Suppression				Outdoor Learning Enhancements and Paving		Intermediate Summer Project		Paving		Major Project (Staging TBD)			
	Pathways to Success			Major Project (Does not Stage)											



\*Note - Major Project Planning begins 18-24 months prior to the start of construction



# Other Buildings

	School / Building	2021	2022	2023	2024	2025	2026	2027	2028	2029	2030	2031	2032	2033	2034
Other Buildings	Preschool		Outdoor Learning, Roofing, and Solar				Paving		Intermediate Summer Project					Final Summer Project	
	Freeman		Paving	Outdoor Learning and Site Enhancements	Roofing and Solar	Lighting									
	Balas Bldg	Office Utilization Analysis													
	Transportation Bldg			Interior Updates and Lighting	Outdoor Seating, plus Roofing and Solar								Final Summer Project		

# Support Infrastructure, Furnishings, and Equipment

Ongoing investments include:

- *Music, arts and science*
- *Buses*
- *Technology*
- *Roofing and solar energy*
- *Paving and stormwater*
- *Building management systems*

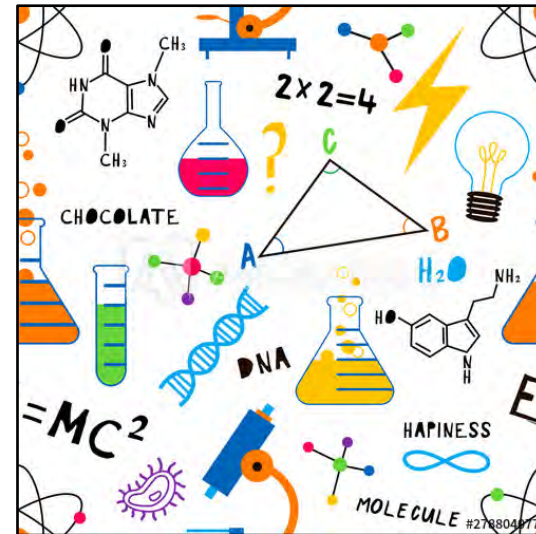




# Music, Arts, and Science

## Primary Investments:

- *Theater updates and modernizations including rigging systems*
- *Furnishings for art, music, and science classrooms/labs*
- *Musical instruments and storage systems*
- *STEAM lab updates and improvements*



# Infrastructure Investments - Buses

Bus Fleet Refresh - continue to invest in the District's 132 buses to ensure safe, efficient, and reliable service.



*Continue to explore additional fleet electrification beyond the District's 4 electric buses.*

# Infrastructure Investments - Technology

## *Infrastructure & Security*

- Refresh Wi-Fi in the buildings
- Update critical core networking equipment and services

## *District Systems & Data*

- Upgrade storage hardware
- Upgrade the data center, redundant data center and cloud systems
- Ensure systems and services have end-user safety, security and data privacy protection

## *Student Learning & Staff Technology Support*

- Classroom technology - refresh and expand
- Student and staff technology - refresh and expand



# Building Management Systems

Integrate building systems, including:

- *HVAC controls*
- *Fire safety*
- *Door access*
- *Exterior lighting*
- *Public address*
- *Emergency communications*



# AAPS ROOFING AND SOLAR IMPROVEMENT PLAN

Building Name	2020		2021		2022		2023		2024		2025		2026	
	Roofing	Solar	Roofing	Solar	Roofing	Solar	Roofing	Solar	Roofing	Solar	Roofing	Solar	Roofing	Solar
Pioneer High School														
Huron High School														
Forsythe Middle School														
AZ STEAM														
Eberwhite Elementary														
Pattengill Elementary														
Haisley Elementary														
Freeman														
Balas Administration														
Huron High School														
Bryant Elementary														
Dicken Elementary														
Pioneer High School														
Slauson Middle School														
Pattengill Elementary														
Thurston Elementary														
Westerman Preschool														
Skyline High School														
Tappan Middle School														
Clague Middle School														
Abbot Elementary														
Carpenter Elementary														
Wines Elementary														
Eberwhite Elementary														
Freeman Elementary														
Transportation Building														
Lawton Elementary														
Scarlett Middle School														
Logan Elementary														





# AAPS Bond Plan 2020-2030

## *Community Engagement*



# Community Engagement

Community stakeholders will have opportunities to learn about the Phase 1 Bond Plan 2020-2030 to provide feedback, including:

- *Community organization presentations*
- *Public town halls*
- *Topical presentations (Environment, Health and Safety, etc.)*
- *Stakeholder surveys*
- *Thought Exchange engagement*
- *Bond Advisory Committee (application information Jan 2021)*
- *Bond Working Groups (application information Jan 2021)*
- *School Design Committees for major projects*
- *Dedicated web page @A2Schools.org*
- *Board of Education meetings*





# Supporting Documents Development

## Additional Supporting Documents Under Development Include:

- *COVID Informed Design Brief*
- *Housing Development Study*
- *Communications Plan*
- *Community Feedback Plan*
- *Community Engagement Materials*
- *Community Engagement Calendar*



# Progress and Next Steps

- **2018/2019**
  - Independent Facilities Condition Assessment completed for all AAPS schools
- **Jan-Dec 2020**
  - Preliminary work reviewed and informed by the Trustees and Board Bond Committee
  - Selected Bond Program Management firm
  - AAPS staff and professional team developed and refined preliminary plan based on bond campaign commitments and independent Facilities Condition Assessment
- **June 2020**
  - Series 1 Bond Sale - \$151M
- **December 2020**
  - Board Study Session
  - Board 1<sup>st</sup> and 2<sup>nd</sup> Briefing
  - Board Approval of Phase 1 AAPS 2020 Bond Plan
- **January - March 2021**
  - Community Engagement Process
  - Form Bond Advisory Group - Applications Process Q1 2021
- **April 2021**
  - Community Engagement Feedback Report to the Board
- **Spring 2021**
  - Bond Advisory Committee Commences Meetings

