

The logo for Ann Arbor Public Schools features a yellow rectangular border. Inside the border, the text "ANN ARBOR PUBLIC SCHOOLS" is written in a bold, black, sans-serif font. Below this, the tagline "LEAD. CARE. INSPIRE." is written in a smaller, black, sans-serif font. At the bottom center of the border, there are three small, square icons: a blue square with a white star, a red square with a white heart, and a yellow square with a white exclamation mark.

ANN ARBOR PUBLIC SCHOOLS
LEAD. CARE. INSPIRE.

Superintendent Update

Jeanice Kerr Swift
Board of Education May 26, 2021



Superintendent Update

May 26, 2021

~ AAPS Current Work ~

- May, 2021 Highlights
Update on our work in progress -
Wrap-up of 20-21 school year
- Honoring the Class of 2021
Commencement Ceremonies
- Extended Continuity of Learning Plan Data

~ AAPS Coming Attractions ~

- Summer Learning, 2021 & Summer Rec & Ed
- Preparing for Fall Back-to-School, 2021
- Health Update

AAPS May Highlights



*Thanks to ALL!
AAPS Nurses, Health
Specialists, Rec & Ed team &
Washtenaw County Health
Dept!*



430 Vaccinations given at WCHD / Huron High School Clinic last Thursday
Including approximately **300** students participating in 12-15 year-old vaccination clinic

AAPS May Highlights



Principal Giles shares a shout out to AA Fire Department for rescuing our 12 ducklings stuck in the courtyard drain at Pattengill Elementary. They will be known as “Cohort 4”

AAPS May Highlights: CTE

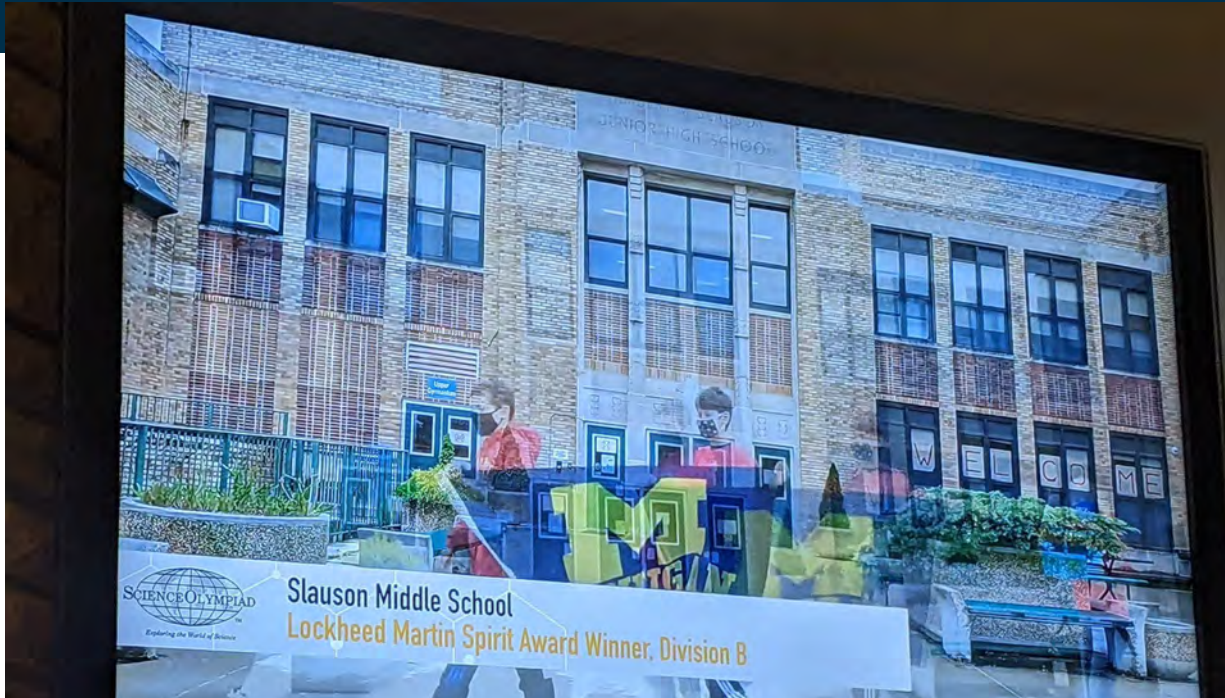


AAPS Homebuilding students at work site



Huron Auto Shop students replacing Mustang transmission

AAPS May Highlights



Slauson wins the Spirit Award at the National Science Olympiad Tournament

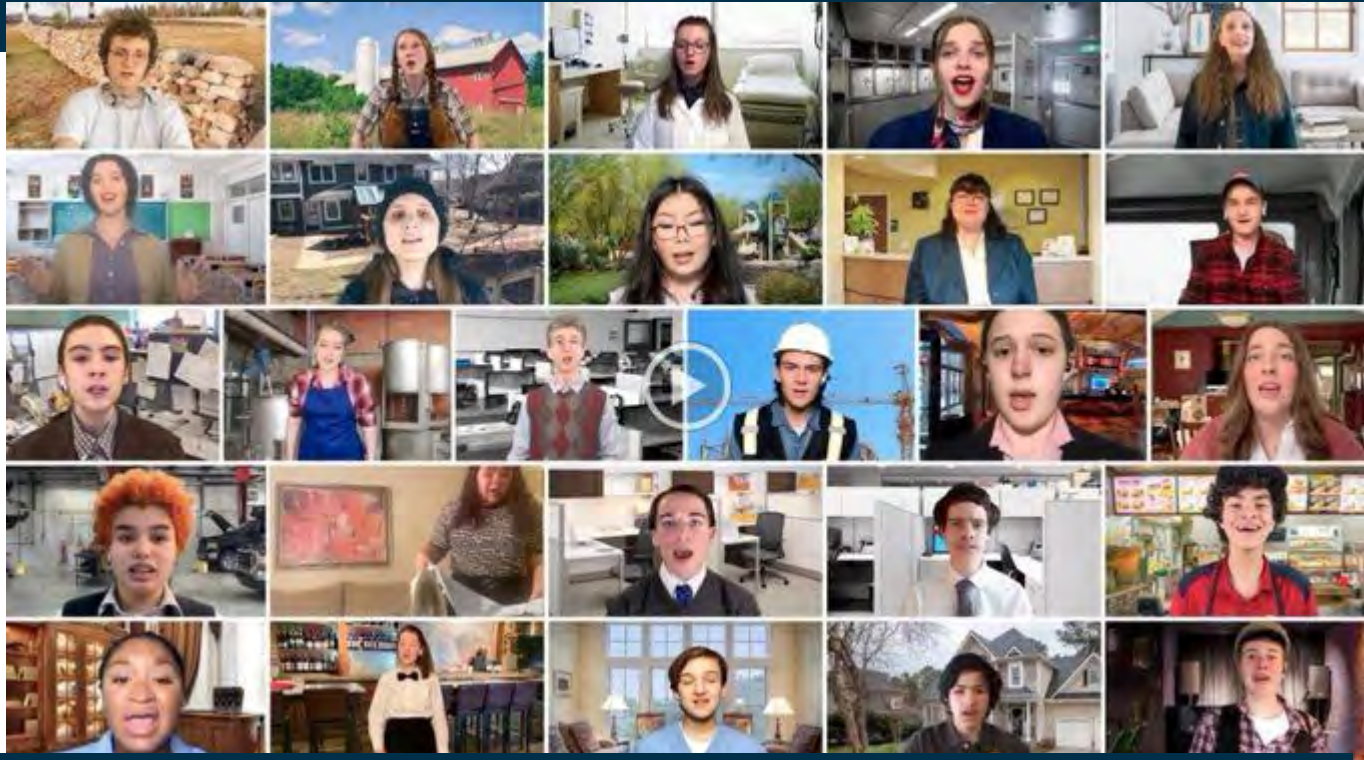
AAPS May Highlights



Pioneer Spring Sing Virtual Choir Concert



May Highlights



Community Ensemble Theatre Livestreams musical 'Working'

AAPS May Highlights



A2 STEAM Orchestra holds outdoor rehearsals



AAPS May Highlights

Emery's members win over 70 MIPA awards



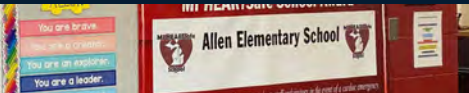
The Huron Emery had a historic performance at the 2021 Michigan Interscholastic Press Association Awards. The publication earned 74 individual awards, breaking the previous record set of 39. In total, *The Emery* was awarded 13 first place finishes, 17 second place finishes, 10 third place finishes and 34 honorable mentions.

The Huron Emery top award recipients: Maya Kogulan (16 awards), Mishal Charania (9 awards), Clara Bowman (9 awards) and Allison Mi (7 awards)

May Highlights



Allen Elementary - 3rd grade Zoomies & Roomies in Writers' Workshop



AAPS May Highlights



Carpenter Y5 Student



Slauson PLTW Class

AAPS May Highlights

Experiencing the Ford F-150 Lightning through the eyes of a young journalist

Allegra Blackwood Special to the Detroit Free Press



Allegra, Slauson 7th Grader, shadowed Free Press staff writer Phoebe Wall Howard for the Ford F-150 Lightning Reveal on May 19

May Learning Continues

A few highlights to a strong finish to school year 20-21

- Safe, fun & engaging activities outdoors - for roomies & zoomies
- Transition & Closure for students who are transitioning levels - 5th & 8th
- Continuation Ceremonies - drive thru, clap-out w/ virtual
- Performing Arts Performances
- Summer food distribution, emergency food for students now planned through June, '22
- Technology turn-in 15,000 devices and begin refresh of devices
- Launch of Summer Learning - A2 Live Online K- 5 program details coming soon
- Reengage & reenvision conversations -

AAPS Food Distribution Program

Meals distributed to date including Connections+ locations (All CAN locations, Peace and AACLC)

= 1,102,084



AAPS Summer Feeding Distribution Sites & Times Wednesdays beginning June 16th through August 18th

The Michigan Department of Education has approved the summer feeding program to continue through August 18th. Each week sites will distribute bundles of free, to-go meals. Parents/guardians may pick up food. Students do not need to be present. We are open to the public for picking up one day of meals for any child.

Look at the NEW Distribution Times – Everyone is Welcome!!

Location	Times	Location	Times
Skyline High School	11:30am-4:30 pm (After 1pm call 994-7085)	Pioneer High School	11:30am-4:30 pm (After 1pm call 994-2265)
Peace Neighborhood Ctr.	11:30am-1:00pm	Arbor Meadows	11:30am-12:30pm
Creekside Community Center	11:30am-12:30 pm		
Scio Farms	11:30am-12:30 pm	Huron High School	11:30 am -1:30 pm
Arrowwood Hills	11:30 am-12:00 pm	Bryant Community Ctr	11:45am-1:30 pm
Carrot Way	12-15 pm -1:00pm	Hikone	11:45 am-1:30 pm
Green/Baxter	11:30am-12:30pm	Mitchell El School	11:30am-1:00pm
A2 Open Elementary July 7-28	1:30pm-2:30pm	Carpenter EL School	11:30am-12:30pm
Golfside	11:30am-12:00pm	Avalon Housing 701 Miller	11:30am-12:00Pm
The Villas Starts June 23	12:15pm -11:45 pm	Avalon Housing 1500 Pauline	12:15pm -12:45pm
Orchard Grove	11:30am-12:30pm	Coachville	11:30am-12:30pm

For AAPS students living at Pinelake, Lakestone and Arbor Club you can pick up meals at these locations: Pioneer, Skyline, Pauline Avalon Housing or Scio Farms.

Home deliveries are available for families who cannot get to a food distribution site by calling: 734-994-2265.

Visit the AAPS website for current information about the Food Distribution Program, <https://www.a2schools.org/Page/15641>



2021 GRADUATIONS

TUE, JUNE 1	6:30 PM	PATHWAYS at Huron
WED, JUNE 2	6:30 PM	HURON at Huron
THU, JUNE 3	6:30 PM	PIONEER at Pioneer
FRI, JUNE 4	6:30 PM	COMMUNITY at Pioneer
MON, JUNE 7	6:30 PM	SKYLINE at Skyline

Congratulations!

1,459
Graduates



ANN ARBOR PUBLIC SCHOOLS
LEAD. CARE. INSPIRE.

CLASS OF
2021

began
kindergarten in
2008-09



**Continued
Bond Program
Spring 2021
Community
Engagement
May Virtual Meetings
& ThoughtExchange**

Friday, May 14th, 12 noon - Service Organizations

Citizen's Millage Committee, Downtown Rotary Club, Kiwanis Club of Ann Arbor, NAACP

Tuesday, May 18th, 12 noon - Business Organizations

Ann Arbor Area Board of Realtors, Ann Arbor Spark, Ann Arbor/Ypsilanti Chamber of Commerce

Tuesday, May 18th, 6:30 pm - Parent/Teacher Organizations

AAEA, Ann Arbor Parent Advisory Committee, Arab American Advisory Group, Districtwide Black Parent Student Support Group, PTO Council, Recreation Advisory Commission

Tuesday, May 18th, 1:30 pm - AAPS Principals, TLC, & Leadership Team

Tuesday, May 25th, 8:00 am - General Public

Tuesday, May 25th, 6:30 pm - Community Organizations/General Public

Ann Arbor Area Community Foundation, Ann Arbor Center for Independent Living, Ann Arbor Community Center, Ann Arbor Senior Center, Avalon Housing, Chinese American Society of Ann Arbor, Community Action Network, Family Learning Center, Jewish Community Center, Local Ministries, Muslim Social Services, Neutral Zone, Peace Neighborhood Center, U of M Project Healthy Schools

Thursday, May 27th, 12 noon - General Public

TBD–Blue Ribbon Committee & Government Leaders

Bond Program Spring 2021 Community Updates

Environmental Organizations - Feb 23-24

A2Zero Partners Meeting

A2 Climate Partnership

Wolf Pack Group

Washtenaw County Contractors Association - March 23



AAPS Next Steps

Summer Learning 2021

AAPS Summer Learning Program

Enrollment NOW Open!

- **Special Education Programming**
 - Including Extended School Year & recovery services for students with special needs
- **Elementary, Middle & High School Programs**
- **Virtual and In-School Learning Opportunities**
- **A2Virtual Asynchronous Opportunities**
- **Most programming is free of charge for AAPS students**

Sign up now at: <https://www.a2schools.org/summer>



AAPS Next Steps

Summer Learning 2021

AAPS Summer Learning Program

Enrollment Continues!

- **Strong Enrollment so far for Summer Learning, 2021**
Approximate enrollment so far -

1,141	Elementary students - all programs
1,181	Secondary school students - all programs
570	SISS students - all programs
120	EL students - all programs

Sign up now at: <https://www.a2schools.org/summer>

NOTE: high school enrollment is tied to semester 2 success rates, so is likely to increase dramatically following semester 2 grades.



AAPS Next Steps

Summer Rec & Ed 2021



In-Person Day Camps from June 14 - August 27
Preschool - 14 year olds

Enrichment Camps - *a few spaces left*
Outdoor Sports Camps - *filling but spaces available*

Info and registration at aarecedcamps.com





AAPS Next Steps

Summer Rec & Ed 2021



Summer Classes for Preschool → Senior Adults

Fitness • Yoga • Cooking • Dancing • Photography
Early Childhood • Art • Languages • Sports

Youth classes are 100% in-person and outdoors!

Class descriptions at aarecedonline.com
Registration begins Monday, June 7

Back to School

ANN ARBOR PUBLIC SCHOOLS
LEAD. CARE. INSPIRE.



August 30, 2021



AAPS Next Steps

Fall 2021

- **Full Fall 2021 Back to School Opening**
 - 5 days per week return to in-school learning
 - Quality AAPS teachers & staff, academic programs, world languages, performing & visual arts & sciences
 - Early childhood through 12th grade
- **Note: There is no hybrid instruction** in AAPS programming for Fall 2021
- Students & families will continue to have the choice of a fully virtual learning program during 21-22 school year

Ann Arbor Public Schools Spring Community Engagement

Continued Planning/Preparation for 2021-22 School Year

Continuing community Information Sessions
Thursday, May 27th - *Fall Back-to-School*

Sessions at 6pm, and available for viewing a2schools.org at any time

Student, parent & staff survey and ThoughtExchange engagement has been shared to hear input & feedback - open now through June 15

Registration process - InfoSnap - has been shared & is now Open for parents to enroll for 21-22 school year

Student, parent & staff K12 Insight Survey - coming soon

Ann Arbor Public Schools Spring Community Engagement

Continued Planning/Preparation for 2021-22 School Year

Thought Exchange for Students and Parents, Staff and Community

- As we turn the page, plan and prepare together for re-engagement and return to full in-school operations in AAPS classrooms and schools in the Fall, 2021, we want to hear your thoughts.
- Through a Thoughtexchange inquiry, we want to hear from you about priorities for the coming school year, the supports your student and family may need, the innovations you want to see continue, and your personal thoughts that you want to share as we prepare for the 2021-22 school year.
- We appreciate your time, and look forward to understanding your perspectives. We will reflect on, share, and publish this information, it will inform our important conversations with **each other on our teams, and across our school communities.**

Ann Arbor Public Schools Spring Community Engagement

Continued Planning/Preparation for 2021-22 School Year *Thought Exchange for Students and Parents, Staff and Community*

- As we look ahead, plan and prepare together for a full re-engagement and return to AAPS classrooms with rich AAPS programming in the Fall, 2021. What **priorities - academic & social emotional** - are you considering and what additional supports do you feel will be needed as we move forward together?
- In transitioning from this COVID school year time and returning to full in-school learning, what **innovations** did you most value from your experience this previous year? Your responses here will help guide our work.
- What **other thoughts** would you offer? What else would you like us to know as we prepare together for our return to the classroom full time for the 21-22 school year?



AAPS Next Steps

Fall 2021

ALL Ann Arbor Public Schools

**Academic, Performing & Visual Arts & Sciences,
Enrichment,
Athletic & ExtraCurricular
International Baccalaureate, STEAM,
Project Lead the Way, World Languages
Environmental Education, Rec & Ed Programs,
Science Olympiad, Robotics, Orchestra Night and
much more**

**~ Return to full operation at all campuses~
5 days per week**

Ann Arbor Public Schools Spring Community Engagement

Continued Planning/Preparation for 2021-22 School Year *InfoSnap Registration - Elementary*

Elementary:

Please indicate your program choice for the 2021-2022 school year:

- In-Person School** - 5 days/week in the neighborhood school building
- A2 Live Online School** (District Program, not connected to your neighborhood school) -
K - 5 live synchronous online instruction, 5 days/week with AAPS Teachers
- A2Virtual Elementary** - K - 5 asynchronous, at own pace, with AAPS Teacher support weekly

Ann Arbor Public Schools Spring Community Engagement

Continued Planning/Preparation for 2021-22 School Year *InfoSnap Registration - Secondary*

Middle and High School:

Please indicate your program choice for the 2021-2022 school year:

- In-Person School** - 5 days/week in the neighborhood school building

- Combination of In-Person and A2 Virtual** Available Asynchronous Courses with AAPS teacher support

- Full time A2 Virtual** asynchronous courses with AAPS teacher support

*See [Course Guide](#) for course offerings.

Superintendent Update | Board of Education Meeting May 26, 2021



AAPS Next Steps

Fall 2021

Some 20-21 Innovations will continue:

- **1:1 Technology for all students**
- **Schoology as the AAPS learning ecosystem**
- **Connectivity support for families**
- **Digital library & academic reading materials 24/7 for all students**
- **Additional School Nurses will continue**
What innovations would you want to see carried forward into their 21-22 school year?



AAPS Next Steps

Fall 2021

Elementary School Grades K-5

Back to School, Fall 2021

- **In-Person In-School** - 5 days/week in neighborhood schools
- ~~~~~
- **A2 Online School** - K - 5 **live synchronous** online instruction, 5 days/week
- **A2Virtual Elementary** - K - 5 asynchronous, at student pace with AAPS teachers support weekly



AAPS Next Steps

Fall 2021

AAPS Preschool Programming

Back to School, Fall 2021

- **Westerman Preschool & All Preschool Classrooms**
Return to full operations
- **Including First Steps, Great Start Readiness, Head Start & Blended Classrooms**
- **Young 5s Offered in All Elementary Schools**
- **Please note: Preschool programs will not be offered virtually**



AAPS Next Steps

Fall 2021

Middle School & High School Grades 6-12

Back to School, Fall 2021

- **In-Person In-School** - 5 days/week in neighborhood schools

~~~~~

- **A2Virtual Middle School**
- **A2Virtual High School**
  - asynchronous, at student pace with AAPS  
Teachers support weekly
  - may be part-time or full-time

*(Will inquire on upcoming survey regarding level of need/demand for any synchronous secondary options)*



# AAPS Next Steps

## Fall 2021

## School Age Childcare Program

(This information was originally shared earlier in May)

- AAPS has used a large group model in previous years will require redesign for COVID safety -
- AAPS faces significant staffing shortages in hourly workers - as is true just now across the country

### Next Steps:

- Will continue to monitor for CDC updated COVID safety requirements for young children under 12 years in larger groups
- Will continue work to rebuild child care staffing
- Will continue work to prioritize in schools w/ greatest need for smaller sized programs
- At this time, parents are advised to plan for non-AAPS before/after school childcare arrangements
- AAPS will remain laser focused on ensuring full restoration of the academic, social emotional, and all supports *during* the academic school day

# Extended Continuity of Learning Plan

**Ms. Jazz Parks**

Assistant Superintendent, School Leadership

**Ms. Dawn Linden**

Assistant Superintendent, Teaching and Learning

**Mr. Paul DeAngelis**

Executive Director, High Schools

# State Legislation on Student Interaction (PA 165)

- (1) For a student to be considered a “pupil engaged in pandemic learning,” the student must have, at a minimum, one two-way interaction “during the week on which 2020-2021 pupil membership count day falls and during each week for the 3 consecutive weeks after the week on which 2020-2021 pupil membership count day falls.” MCL 388.1606(9)(c).
- (2) The District’s Extended COVID-19 Learning Plan, created pursuant to Section 98a of the State School Aid Act, must include a “requirement that the district shall ensure that 2 2-way interactions occur . . . during each week of the school year for at least 75% of pupils enrolled in the district.” MCL 388.1698a(1)(i).
- (3) To be excused from the requirement that the District “have at least 75% of the district’s membership in attendance on any day of pupil instruction” for the 2020-2021 school year, the District must “ensure that 1 2-way interaction occurs . . . during each month of the school year for at least 75% of pupils enrolled in the district.” MCL 388.1701(d), (h).

# Reminder: State Legislation on 2-Way Interaction (PA 165)

## State Requirement:

- 2-Way Interaction, 2 times per week
- 75% of students attending daily
- Communication between teacher or another district employee responsible for student learning, grade progression or academic progress
- Initial communication followed by response, relevant to the course or overall academic progress/grade progression
- Record of communication maintained/logged
  - Email
  - Telephone
  - Instant Message
  - Face-to-Face



# Reminder: AAPS Daily Attendance Practice and Monitoring

## Daily Attendance Practices:

- Teachers record attendance daily
- Students who have logged in at any time during the learning block are marked “Present” (P)
- Students who have not logged in are marked “Unverified” (UNV)
- As has always been our practice, **in real time**, school support teams, including the office professional reach to families to assist students with logging in and attending



| Percent of Students with 2 or More Two-Way Communications Recorded, by Week, by Level |              |                       |                   |                  |                                       |              |                       |                   |                  |
|---------------------------------------------------------------------------------------|--------------|-----------------------|-------------------|------------------|---------------------------------------|--------------|-----------------------|-------------------|------------------|
| Timeframe                                                                             | All Students | Elementary Grades K-5 | Middle Grades 6-8 | High Grades 9-12 | Timeframe                             | All Students | Elementary Grades K-5 | Middle Grades 6-8 | High Grades 9-12 |
| Week 1<br>9/9/2020 - 9/15/2020                                                        | 94.47%       | 91.74%                | 97.45%            | 96.30%           | Week 19<br>1/20/2021 - 1/26/2021      | 94.69%       | 93.89%                | 97.18%            | 94.12%           |
| Week 2<br>9/16/2020 - 9/22/2020                                                       | 95.76%       | 94.32%                | 97.64%            | 96.52%           | Week 20<br>1/27/2021 - 2/2/2021       | 94.95%       | 94.03%                | 97.59%            | 94.47%           |
| Week 3<br>9/23/2020 - 9/29/2020                                                       | 95.83%       | 94.55%                | 97.50%            | 96.52%           | Week 21<br>2/3/2021 - 2/9/2021        | 95.35%       | 94.12%                | 97.53%            | 95.60%           |
| Week 4<br>9/30/2020 - 10/6/2020                                                       | 95.86%       | 94.38%                | 97.58%            | 96.79%           | Week 22****<br>2/10/2021 - 2/16/2021  | 90.24%       | 91.33%                | 93.55%            | 86.49%           |
| Week 5<br>10/7/2020 - 10/13/2020                                                      | 96.13%       | 94.55%                | 97.85%            | 97.19%           | Week 23<br>2/17/2021 - 2/23/2021      | 95.36%       | 93.54%                | 97.53%            | 96.46%           |
| Week 6<br>10/14/2020 - 10/20/2020                                                     | 95.87%       | 94.27%                | 97.93%            | 96.75%           | Week 24<br>2/24/2021 - 3/2/2021       | 95.24%       | 93.88%                | 97.48%            | 95.63%           |
| Week 7<br>10/21/2020 - 10/27/2020                                                     | 95.42%       | 93.89%                | 97.45%            | 96.21%           | Week 25<br>3/3/2021 - 3/9/2021        | 94.78%       | 93.13%                | 97.21%            | 95.45%           |
| Week 8<br>10/28/2020 - 11/3/2020                                                      | 94.92%       | 93.38%                | 97.05%            | 95.65%           | Week 26<br>3/10/2021 - 3/16/2021      | 94.35%       | 92.99%                | 97.10%            | 94.41%           |
| Week 9<br>11/4/2020 - 11/10/2020                                                      | 95.15%       | 93.29%                | 97.40%            | 96.26%           | Week 27<br>3/17/2021 - 3/23/2021      | 93.85%       | 92.27%                | 96.75%            | 94.10%           |
| Week 10<br>11/11/2020 - 11/17/2020                                                    | 94.80%       | 93.08%                | 97.21%            | 95.62%           | Week 28*****<br>3/24/2021 - 3/26/2021 | 77.29%       | 60.81%                | 93.99%            | 89.08%           |
| Week 11<br>11/18/2020 - 11/24/2020                                                    | 94.52%       | 93.02%                | 96.94%            | 95.01%           | Week 29*****<br>4/5/2021 - 4/6/2021   | 90.57%       | 89.54%                | 94.12%            | 89.63%           |
| Week 12*<br>11/25/2020 - 12/1/2020                                                    | 92.93%       | 91.46%                | 95.95%            | 92.98%           | Week 30<br>4/7/2021 - 4/13/2021       | 93.27%       | 92.23%                | 96.07%            | 92.82%           |
| Week 13<br>12/2/2020 - 12/8/2020                                                      | 94.33%       | 92.61%                | 96.75%            | 95.12%           | Week 31<br>4/14/2021 - 4/20/2021      | 93.34%       | 92.47%                | 96.26%            | 92.60%           |
| Week 14<br>12/9/2020 - 12/15/2020                                                     | 94.85%       | 93.65%                | 97.42%            | 94.81%           | Week 32*****<br>4/21/2021 - 4/27/2021 | 89.41%       | 93.34%                | 95.20%            | 80.00%           |
| Week 15**<br>12/16/2020 - 12/18/2020                                                  | 91.59%       | 90.00%                | 96.04%            | 90.82%           | Week 33*****<br>4/28/2021 - 5/4/2021  | 93.02%       | 93.37%                | 95.31%            | 91.00%           |
| Week 16**<br>1/4/2021 - 1/5/2021                                                      | 92.57%       | 91.08%                | 95.96%            | 92.37%           | Week 34<br>5/5/2021 - 5/11/2021       | 93.49%       | 93.16%                | 95.88%            | 92.35%           |
| Week 17<br>1/6/2021 - 1/12/2021                                                       | 94.70%       | 93.67%                | 97.23%            | 94.44%           | Week 35<br>5/12/2021 - 5/18/2021      | 93.25%       | 93.26%                | 95.39%            | 91.78%           |
| Week 18***<br>1/13/2021 - 1/19/2021                                                   | 93.68%       | 92.74%                | 96.61%            | 93.05%           |                                       |              |                       |                   |                  |

# Student Engagement Rates - 2 Way Communication

\*Only two synchronous days this week due to Thanksgiving, thus less opportunities to attend/two-way communication

\*\*Only two synchronous days each week due to Winter Break, thus less opportunities to attend/two-way communication

\*\*\*Only three synchronous days this week due to Martin Luther King day, thus less opportunities to attend/two-way communication

\*\*\*\*Due to mid-winter break and a snow day, there was only one day of synchronous instruction in week 22

\*\*\*\*\*Spring Break shortened weeks 28 and 29 to 1 and 2 days respectively, thus less opportunities to attend/two-way communication

\*\*\*\*\*High school had only 1 synchronous day this week, middle school 1 less than usual

\*\*\*\*\*High school and middle school both had one less day than usual this week

Superintendent Update | Board of Education Meeting May 20, 2021

**Average Daily Attendance Rate, by Week, by Level**

| Timeframe                          | All Students | Elementary Grades K-5 | Middle Grades 6-8 | High Grades 9-12 | Timeframe                                       | All Students | Elementary Grades K-5 | Middle Grades 6-8 | High Grades 9-12 |
|------------------------------------|--------------|-----------------------|-------------------|------------------|-------------------------------------------------|--------------|-----------------------|-------------------|------------------|
| Week 1<br>9/9/2020 - 9/15/2020     | 84.89%       | 85.06%                | 87.97%            | 82.61%           | Week 19*<br>1/20/2021 - 1/26/2021               | 91.28%       | 90.32%                | 93.29%            | N/A              |
| Week 2<br>9/16/2020 - 9/22/2020    | 91.54%       | 89.97%                | 94.67%            | 91.64%           | Week 20*<br>1/27/2021 - 2/2/2021                | 91.57%       | 90.69%                | 93.40%            | N/A              |
| Week 3<br>9/23/2020 - 9/29/2020    | 91.32%       | 90.50%                | 94.07%            | 90.64%           | Week 21*<br>2/3/2021 - 2/9/2021                 | 89.56%       | 90.15%                | 93.84%            | 85.84%           |
| Week 4<br>9/30/2020 - 10/6/2020    | 91.48%       | 90.67%                | 94.47%            | 90.64%           | Week 22 (one day only)<br>2/10/2021 - 2/16/2021 | 90.58%       | 92.18%                | 93.47%            | 86.39%           |
| Week 5<br>10/7/2020 - 10/13/2020   | 91.79%       | 90.47%                | 94.79%            | 91.62%           | Week 23<br>2/17/2021 - 2/23/2021                | 89.62%       | 90.08%                | 93.17%            | 86.58%           |
| Week 6<br>10/14/2020 - 10/20/2020  | 91.54%       | 91.14%                | 94.75%            | 89.97%           | Week 24<br>2/24/2021 - 3/2/2021                 | 88.71%       | 89.53%                | 93.40%            | 84.39%           |
| Week 7<br>10/21/2020 - 10/27/2020  | 90.15%       | 90.27%                | 94.13%            | 87.33%           | Week 25<br>3/3/2021 - 3/9/2021                  | 88.25%       | 89.08%                | 92.89%            | 83.95%           |
| Week 8<br>10/28/2020 - 11/3/2020   | 87.75%       | 90.25%                | 88.44%            | 83.80%           | Week 26<br>3/10/2021 - 3/16/2021                | 87.58%       | 88.99%                | 92.36%            | 82.37%           |
| Week 9<br>11/4/2020 - 11/10/2020   | 90.30%       | 89.91%                | 93.94%            | 88.41%           | Week 27<br>3/17/2021 - 3/23/2021                | 82.86%       | 79.85%                | 91.50%            | 81.25%           |
| Week 10<br>11/11/2020 - 11/17/2020 | 91.40%       | 88.56%                | 95.07%            | 92.92%           | Week 28<br>3/24/2021 - 3/26/2021                | 71.37%       | 57.89%                | 89.68%            | 77.89%           |
| Week 11<br>11/18/2020 - 11/24/2020 | 87.95%       | 88.21%                | 93.25%            | 84.03%           | Week 29<br>4/5/2021 - 4/6/2021                  | 85.23%       | 85.73%                | 90.27%            | 81.12%           |
| Week 12<br>11/25/2020 - 12/1/2020  | 89.14%       | 88.87%                | 93.15%            | 86.84%           | Week 30<br>4/7/2021 - 4/13/2021                 | 80.75%       | 79.45%                | 89.18%            | 76.87%           |
| Week 13<br>12/2/2020 - 12/8/2020   | 88.67%       | 88.87%                | 93.44%            | 85.21%           | Week 31<br>4/14/2021 - 4/20/2021                | 79.03%       | 74.01%                | 89.83%            | 78.78%           |
| Week 14<br>12/9/2020 - 12/15/2020  | 88.52%       | 89.14%                | 93.91%            | 84.05%           | Week 32<br>4/21/2021 - 4/27/2021                | 87.78%       | 88.27%                | 89.74%            | 78.90%           |
| Week 15<br>12/16/2020 - 12/18/2020 | 86.93%       | 87.86%                | 92.81%            | 81.69%           | Week 33<br>4/28/2021 - 5/4/2021                 | 86.14%       | 88.31%                | 88.73%            | 78.70%           |
| Week 16<br>1/4/2021 - 1/5/2021     | 89.17%       | 88.98%                | 93.63%            | 86.44%           | Week 34<br>5/5/2021 - 5/11/2021                 | 85.44%       | 88.38%                | 89.55%            | 78.56%           |
| Week 17<br>1/6/2021 - 1/12/2021    | 88.36%       | 89.62%                | 93.32%            | 83.30%           | Week 35<br>5/12/2021 - 5/18/2021                | 83.35%       | 86.46%                | 87.93%            | 75.92%           |
| Week 18<br>1/13/2021 - 1/19/2021   | 87.55%       | 88.96%                | 92.77%            | 82.08%           |                                                 |              |                       |                   |                  |

*Note: These averages are based on M-Tu-Th-F attendance. Wednesdays are excluded because they are asynchronous. 11/3/2020 is excluded from week 8 because no classes were held on a lecture day. 11/26/2020 & 11/27/2020 are excluded due to Thanksgiving. 12/21/2020, 12/22/2020, 12/31/2020, 1/1/2021 & 1/2/2021 are excluded from weeks 15 and 16 due to Winter Break. 1/18/2021 is excluded from week 18 due to Martin Luther King Day, 2/12/2021, 2/15/2021, and 2/16/2021 are excluded from week 23 because of mid-winter break and a snow day. 3/29/2021, 3/30/2021, 4/1/2021, and 4/2/2021 are excluded from weeks 28 & 29 due to Spring Break.*

\* High School attendance was removed from consideration during exam week periods because the schedule of exams does not comport with our daily attendance definitions.

# Average Daily Attendance Rates



# AAPS COVID-19 Status Update

Jenna Bacolor, MPH, LMSW  
Executive Director, Community Division

# CDC: Washtenaw County Data

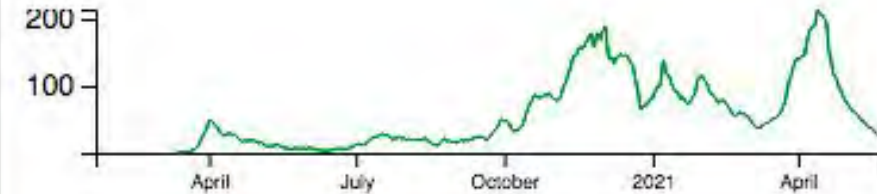
<https://covid.cdc.gov/covid-data-tracker/#county-view>

## As of Saturday, May 22, 2021 (latest data available as of May 26)

|                                             |
|---------------------------------------------|
| <b>Moderate<br/>Transmission<br/>Yellow</b> |
| 10-49                                       |
| 5.0%-7.9%                                   |

7 day total cases  
177, or  
**48.15** per 100K

↓ -33.21 % change

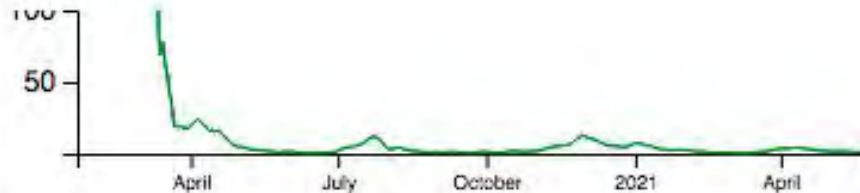


46 day  
downward  
trend!

|                                      |
|--------------------------------------|
| <b>Low<br/>Transmission<br/>Blue</b> |
| 0-9                                  |
| <5.0%                                |

Percent positivity  
**2.16%**

↑ 0.03 % change



# AAPS COVID-19 Case Dashboard - Report

<https://www.a2schools.org/casedashboard>

| Week             | Student Cases | Staff Cases | Contractor Cases | Weekly Total Cases | Total Schools* with Cases (of 30 schools) |
|------------------|---------------|-------------|------------------|--------------------|-------------------------------------------|
| April 5-11       | 3             | 3           | 1                | 7                  | 5                                         |
| April 12-18      | 9             | 0           | 3                | 12                 | 9                                         |
| April 19-25      | 4             | 2           | 1                | 7                  | 6                                         |
| April 26 - May 2 | 3             | 1           | 3                | 7                  | 6                                         |
| May 3 - 9        | 5             | 0           | 0                | 5                  | 3                                         |
| May 10-16        | 1             | 0           | 0                | 1                  | 1                                         |
| May 17-23        | 1             | 1           | 0                | 2                  | 2                                         |
| May 24 - 30      | 0             | 0           | 0                | 0                  | 0                                         |



# COVID-19 Testing for Students, Families, and Staff

## AAPS offers weekly testing

- Partnership with LynxDx for painless PCR
- Student athletes can use this as their weekly test
- Elementary students and families are encouraged to get tested

## Continued antigen testing for HS athletes other HS students

- Required by MDHHS for athletic participation
- Marching band, flag, and others also testing
- Very low number of positives

**Huron High School  
Drive-thru PCR (saliva)  
Saturday  
June 5  
12:00 noon - 3:00 p.m.**

<https://lynxdx.health/register>

Offered in partnership with LynxDx

# CDC Guidance for Schools (Updated May 15)

## Specific to continued use of masks, social distance & Super Six in AAPS schools through end of 20-21 school year

CDC recommends that schools continue to use the current COVID-19 prevention strategies for the 2020-21 school year.

“Students will not be fully vaccinated by the end of the 2020-2021 school year. Youth under the age of 12 are not yet eligible for vaccination. Youth between the ages of 12 and 15 became eligible for vaccination on May 12, 2021. Because people are not fully vaccinated until 2 weeks after their second dose of the Pfizer vaccine, students in this age group will not be fully vaccinated before the end of current school year.”

CDC will provide guidance for the 2021-22 school year in the coming weeks.

<https://www.cdc.gov/coronavirus/2019-ncov/community/schools-childcare/operation-strategy.html#fully-vacc>



# MDHHS Lifting Restrictions



## Beginning June 1:



- There will no longer be capacity limits outdoors.
- There will no longer be capacity limits at residential gatherings.
- Indoor establishments will be at 50% capacity.
- Social gatherings will now be regulated only by the venue.
  - *For example, guidelines or rules for an indoor wedding or conference would be set by the establishment in which it is hosted.*
- Face masks continue to be required for non-vaccinated individuals indoors.



**Beginning July 1**, all broad epidemic orders will be lifted.

