

Featuring King student artwork from Ms. Emily Fineberg's Kindergarten & Young 5's classes



Lily, King Elementary, Kindergarten

ANN ARBOR PUBLIC SCHOOLS
LEAD. CARE. INSPIRE.



**Update:
Extended Continuity of Learning Plan
Reimagine Learning**

Board of Education
Wednesday, December 16, 2020

Extended Continuity of Learning Plan Update

- Highlights of Ongoing Work
- Spotlight on Learning in the Virtual Classroom
- MDE Required Reporting:
 - 2-Way Communication Rates
- Refinements to the Virtual School Day
- School Building Preparedness for Return to In-School Learning
- Superintendent Recommendation
- Next Steps



Alexander, King Elementary, Kindergarten

Extended Continuity of Learning Plan Update:

- Continue to **enhance supports** for students, families, & staff during this virtual learning time
- Continue to implement critical attention & wrap around supports for those students for whom the absence from school presents greater challenges and for all AAPS students impacted by school closure
- Work together to reduce escalating community spread so that we can safely return our students to in-school learning in the AAPS
- As soon as safely possible, top priority is to return small groups of students for in-school learning, beginning with those students with greatest challenges at all levels, and our youngest students
- Continue work to maintain buildings in a state of readiness for return
- Continue to monitor to safely begin district transition to in-school learning, grade by grade

Return of Our AAPS Children to In-School Learning

- Thank You to our students, teachers & teams, parents, & community for all the hard work & support to serve students
- In-person learning is our shared goal
- We believe the *best* place for most students to learn is in-person learning inside our school buildings
- In-person learning is our first choice for our students when it is safe for groups to gather indoors
- Continue our work to fully prepare protocols & processes, operations (transportation, food service, etc), and our school buildings for in-person instruction
- Students or families who feel best for them may remain in virtual learning for the full 20-21 school year



Matthew, King Elementary, Kindergarten



Neela, King Elementary, Kindergarten

Our work may look very different now, yet our critical mission remains ever the same:

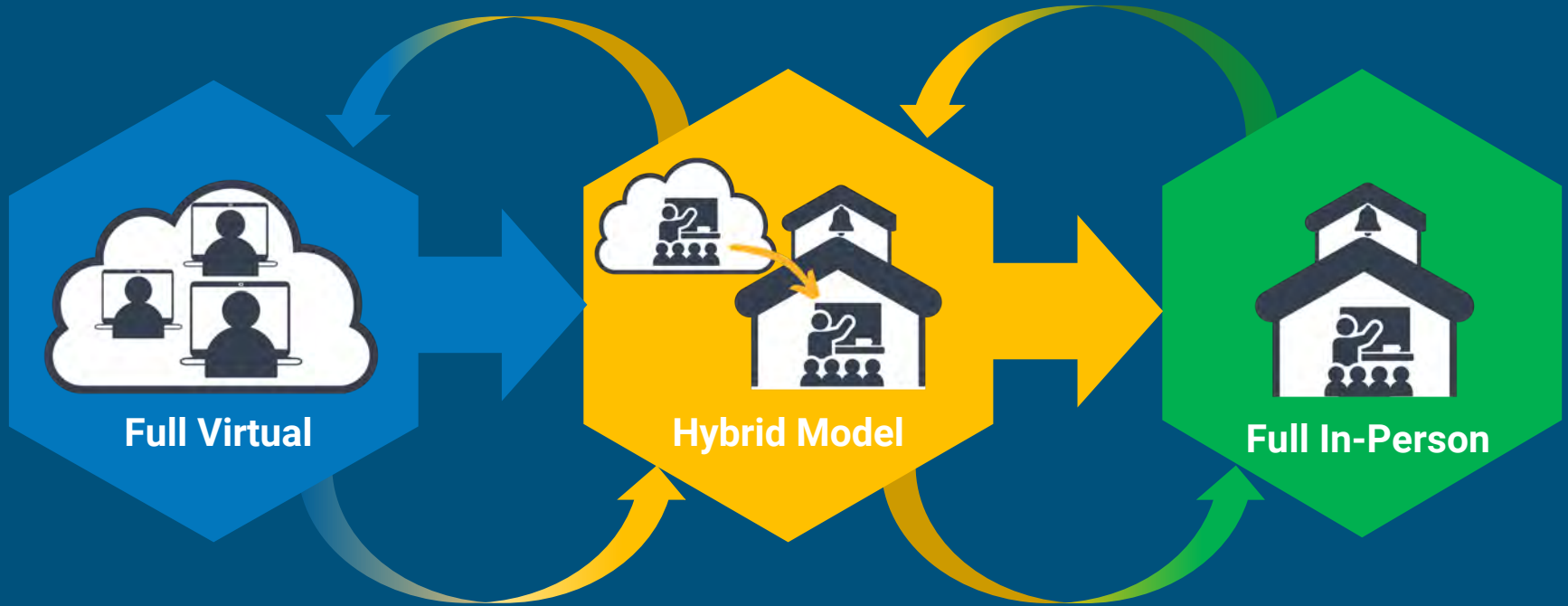
Every Child. Every Day.

Our entire AAPS team is committed & will continue to work hard to ensure our students are healthy & safe, cared for, connected & supported, & continue learning during 2020-21

**Students are our mission,
and we are on this mission.**

AAPS REIMAGINE LEARNING PLAN 2020-21

Progression to Full In-Person Classroom Learning*



* Virtual programming is available all year.

AAPS Virtual Learning



Ryusei, King Elementary, Kindergarten

- Students and teachers are engaged in virtual classes, activities, and events
- Monitor students and continue to add supports for students as needed
- Continue to refine professional supports & services for students with Specialized Learning Needs and for other students as needed
- Supports include individual and small group outreach, academic, social emotional, mental health and others
- During this pandemic time, we are working to ensure recovery services for our students over time & support strategies such Summer Learning Academy will continue
- During hybrid stage, students with high-impact needs who learn in small learning groups will receive additional face-to-face time

AAPS REIMAGINE LEARNING PLAN 2020-21



AAPS Food Distribution

AAPS Equity Plan - Pillar 5: Family & Community Empowerment

Action 2. Improve access to resources, and remove barriers to resources for families and individuals

Action 3. Create and connect with community partners to provide supports and services

690,000+ Meals distributed since March 16



NEXT TWO FOOD DISTRIBUTION DATES

Monday, December 21
(7 days of food)

Monday, December 28
(7 days of food)

Families in need please visit
a2schools.org or call AAPS
Food Line at **994-2265**

Rec & Ed - Free PK - 8 Programs



Free Virtual and In-Person (Outdoor) Classes

Sign up at aarecedonline.com

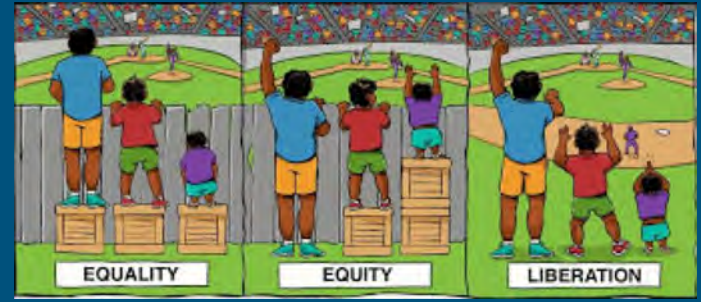
Pillars of the AAPS Equity Plan

1. Perpetuating **Systems** of Equity and Opportunity
2. Courageous, Equity-Centered **Leadership**
3. Systemic Transformation of **Culture**
4. Equity-Centered School and **Classroom** Practices
5. Family and **Community** Empowerment

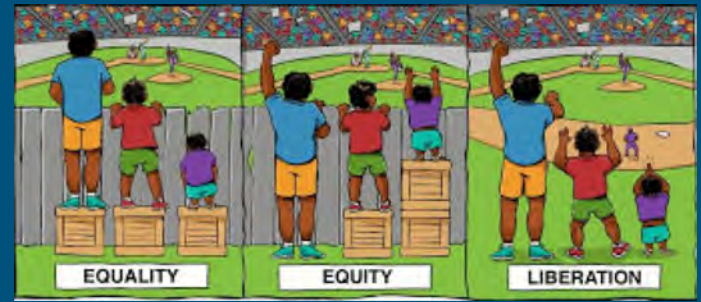


Anna, King Elementary, Young 5

Equity is...



- The moral responsibility of each member of our learning community to take the intentional actions necessary to create a learning community free of barriers, biases, and disproportionality for each and every person regardless of personal characteristics and social circumstances
- The foundation and the fundamental core belief and value of our system
 - District Equity Plan
 - Accountability and Capacity across the system



Highlights of current Equity work in progress during 20-21

Equity Plan: Pillar 2 Leadership Capacity: Professional Development Opportunities and Pathways

Principal Professional Development Pathway Wednesdays is a weekly series to support AAPS entire leadership team in connecting to, supporting and influencing the equity-driven instructional work of teachers

Responsive Teaching Institute (WISD)

- Dr. Gholdy Muhammed, Dr. Bettina Love, and Dr. Yolanda Sealy-Ruiz
- Many AAPS team members participate in this year-long program

Leading With Equity National AASA Cohort

- Dr. Bryant Marks on The Hidden Biases of Good People
- Dr. Pedro Noguera on Leading for Equity
- Dr. Dennis Carpenter on Equity in Education

National Equity and Social-Emotional Learning Cohorts



Paxton, King Elementary, Young 5

Highlights: Equity Plan, Pillar 4: School & Classroom Practices

Leverage opportunities in Extended Continuity of Learning to implement equity practices, such as:

- Full library provided for all P-12 students on their device
- Provision of support for devices for all P-12 students
- Provision of support for connectivity through Comcast & other tools
- Adaptable grading approach implemented, Fall, 2020
- Students who experience the greatest needs will be among the first to transition to in-person learning
- Small group supports are implemented for students with the greatest need - tutoring, social emotional, & mental health
- Teacher Learning Networks continue work coordinating emphasis, lessons & curricula - continuing from Summer Learning, 2020 - for anti-bias and social justice lens for learning across AAPS classrooms



Paxton, King Elementary, Young 5



Pony, King Elementary, Young 5

ANN ARBOR PUBLIC SCHOOLS
LEAD. CARE. INSPIRE.



Student 2-Way Communication & Attendance

~ Required Reporting ~

Reminder: State Legislation on 2-Way Interaction (PA 165)

State Requirement:

- 2-Way Interaction, 2 times per week
- 75% of students attending daily
- Communication between teacher or another district employee responsible for student learning, grade progression or academic progress
- Initial communication followed by response, relevant to the course or overall academic progress/grade progression
- Record of communication maintained/logged
 - Email
 - Telephone
 - Instant Message
 - Face-to-Face

State Legislation on Two-Way Student Interaction (PA 165)

- (1) For a student to be considered a “pupil engaged in pandemic learning,” the student must have, at a minimum, one two-way interaction “during the week on which 2020-2021 pupil membership count day falls and during each week for the 3 consecutive weeks after the week on which 2020-2021 pupil membership count day falls.” MCL 388.1606(9)(c).
- (2) The District’s Extended COVID-19 Learning Plan, created pursuant to Section 98a of the State School Aid Act, must include a “requirement that the district shall ensure that 2 2-way interactions occur . . . during each week of the school year for at least 75% of pupils enrolled in the district.” MCL 388.1698a(1)(i).
- (3) To be excused from the requirement that the District “have at least 75% of the district’s membership in attendance on any day of pupil instruction” for the 2020-2021 school year, the District must “ensure that 1 2-way interaction occurs . . . during each month of the school year for at least 75% of pupils enrolled in the district.” MCL 388.1701(d), (h).

Student Two-Way Interaction Rates

Percent of Students with 2 or More Two-Way Communications Recorded, by Week, by Level				
Timeframe	All Students	Elementary Grades K-5	Middle Grades 6-8	High Grades 9-12
Week 1 9/9/2020 - 9/15/2020	94.47%	91.74%	97.45%	96.30%
Week 2 9/16/2020 - 9/22/2020	95.76%	94.32%	97.64%	96.52%
Week 3 9/23/2020 - 9/29/2020	95.83%	94.55%	97.50%	96.52%
Week 4 9/30/2020 - 10/6/2020	95.86%	94.38%	97.58%	96.79%
Week 5 10/7/2020 - 10/13/2020	96.13%	94.55%	97.85%	97.19%
Week 6 10/14/2020 - 10/20/2020	95.87%	94.27%	97.93%	96.75%
Week 7 10/21/2020 - 10/27/2020	95.42%	93.89%	97.45%	96.21%
Week 8 10/28/2020 - 11/3/2020	94.92%	93.38%	97.05%	95.65%
Week 9 11/4/2020 - 11/10/2020	95.15%	93.29%	97.40%	96.26%
Week 10 11/11/2020 - 11/17/2020	94.80%	93.08%	97.21%	95.62%
Week 11 11/18/2020 - 11/24/2020	94.52%	93.02%	96.94%	95.01%
Week 12* 11/25/2020 - 12/1/2020	92.93%	91.46%	95.95%	92.98%
Week 13 12/2/2020 - 12/8/2020	94.33%	92.61%	96.75%	95.12%

**Only two synchronous days this week due to Thanksgiving, thus less opportunities to attend/two-way communication*

Reminder: AAPS Daily Attendance Practice and Monitoring

Daily Attendance Practices:

- Teachers record attendance daily
- Students who have logged in at any time during the learning block are marked “Present” (P)
- Students who have not logged in are marked “Unverified” (UNV)
- As has always been our practice, **in real time**, school support teams, including the office professional reach to families to assist students with logging in and attending



Average Daily Attendance Rates

Average Daily Attendance Rate, by Week, by Level				
Timeframe	All Students	Elementary Grades K-5	Middle Grades 6-8	High Grades 9-12
Week 1 9/9/2020 - 9/15/2020	84.89%	85.06%	87.97%	82.61%
Week 2 9/16/2020 - 9/22/2020	91.54%	89.97%	94.67%	91.64%
Week 3 9/23/2020 - 9/29/2020	91.32%	90.50%	94.07%	90.64%
Week 4 9/30/2020 - 10/6/2020	91.48%	90.67%	94.47%	90.64%
Week 5 10/7/2020 - 10/13/2020	91.79%	90.47%	94.79%	91.62%
Week 6 10/14/2020 - 10/20/2020	91.54%	91.14%	94.75%	89.97%
Week 7 10/21/2020 - 10/27/2020	90.15%	90.27%	94.13%	87.33%
Week 8 10/28/2020 - 11/3/2020	87.75%	90.25%	88.44%	83.80%
Week 9 11/4/2020 - 11/10/2020	90.30%	89.91%	93.94%	88.41%
Week 10 11/11/2020 - 11/17/2020	91.40%	88.56%	95.07%	92.92%
Week 11 11/18/2020 - 11/24/2020	87.95%	88.21%	93.25%	84.03%
Week 12 11/25/2020 - 12/1/2020	89.14%	88.87%	93.15%	86.84%
Week 13 12/2/2020 - 12/8/2020	88.67%	88.87%	93.44%	85.21%

Note: These averages are based on M-Tu-Th-F attendance. Wednesdays are excluded because they are asynchronous. 11/3/2020 is excluded from week 8 because no classes were held on election day. 11/26/2020 & 11/27/2020 are excluded due to Thanksgiving

Student Outreach and Engagement Supports

- **Virtual small group supports** for students focusing on academic and SEL support and engagement
- **Reaching out and being flexible with families** to make sure they know that we are here to support them with their needs
- Counselors, Social Workers, School Psychologists, Intervention Specialists, and staff are following up daily in regards to specific students' needs whether it be **SEL, mental health, basic needs or attendance checks**
- Parents will be receiving their child's individual NWEA scores and 1st nine-week assessment reports for students in Kindergarten-5th grade
- We will be sharing additional engagement data in the weeks ahead

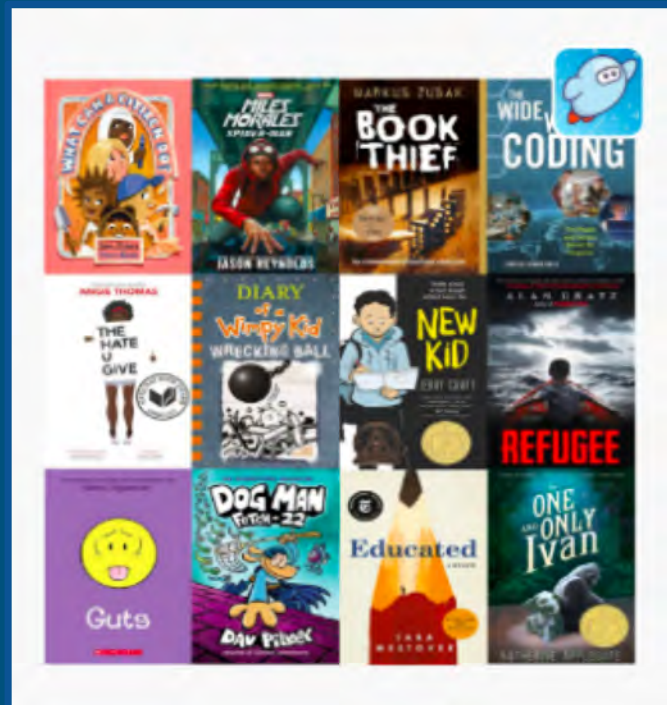
Social and Emotional Learning Supports

- SEL through an equity framework
- Transformative SEL is anchored in the notion of justice-oriented citizenship, with issues of culture, identity, agency, belonging, and engagement explored as relevant expression
- Student supports are designed to provide proactive supports for students as well as ensuring that we have consistent and fully embedded responsive guidance, mental health, and crisis response protocols in place should the need arise

Family Access to Great Books - Read at Home

Thank you to our amazing AAPS Librarians for hosting a **Sora Overdrive Digital Library parent access training session** on Tuesday, December 15th.

For the convenience of our families, we recorded that event and it can be viewed on our website at a2schools.org. See our Digital Library headline on the main page.



Family Supports - Student Intervention and Support Services (SISS)

[A2schools.org](https://a2schools.org) and head to the SISS Department Page

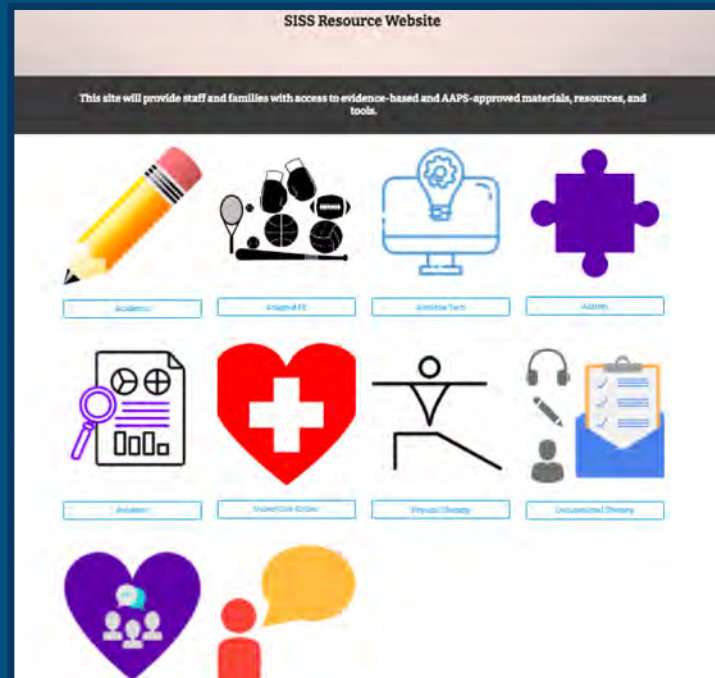


Monthly support groups to assist in challenges
this school year.

Every 2nd Tuesday - 7:30pm - 8:30pm

Every 4th Thursday - 1:00pm - 2:00pm

On Demand Family Support Resources



Access to Technology and Internet

Devices:

16,650 devices have been distributed to students

Connectivity:

475 hotspots have been distributed to families

80 families and counting have received direct assistance in establishing Comcast Essential Sponsorship connections

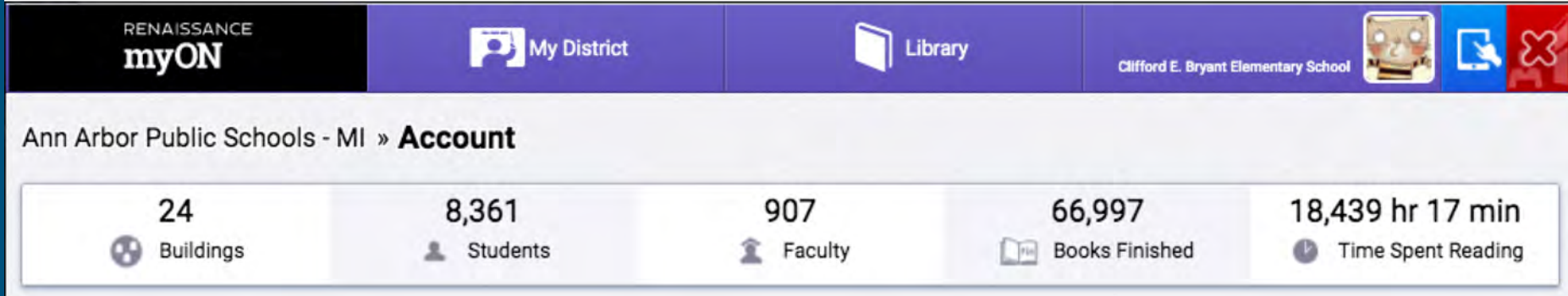
internet>>
essentials
FROM COMCAST

Affordable Internet at Home
for Eligible Households

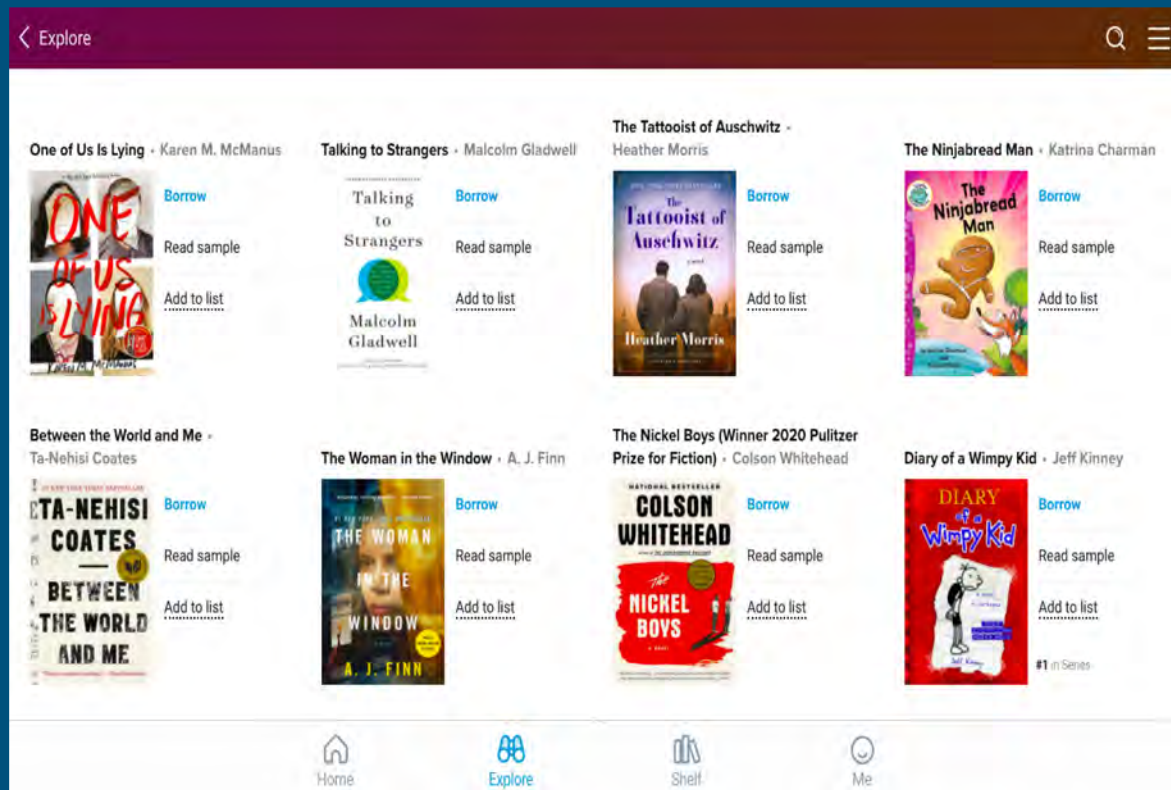
Contact: **Jason Kitchen**
Student and Family Help Desk: 734-997-1222
M - TH 1:00pm - 7:30pm; F 1:00pm - 5:00pm

Renaissance myOn Digital Library Update

Renaissance myOn Usage as of December 14



Sora Digital Library Update



As of December 14:

- Students signed in: **11,164**
- eBooks and audiobooks opened: **33,608**
- Hours of reading: **22,058.71**

Daily Instruction Spotlight: PLTW

**Huron High
School
PLTW
Engineering and
Design
Mr. Rod Culpit**



Vocal and Instrumental Music Thrives

**Scarlett
Middle
School**

**7th Grade
Band Concert**

**Director
Caroline
Fitzgerald**

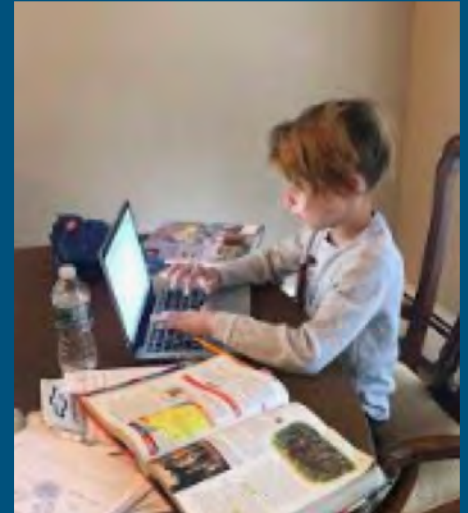


Flexible Learning Paths

Our goal remains to provide flexible learning paths that best support our student and families.

As always, we invite families to stay in close communication with teachers and administrators about their needs.

We are here to help.





Sam, King Elementary, Kindergarten

ANN ARBOR PUBLIC SCHOOLS
LEAD. CARE. INSPIRE.



Readiness of School Buildings for Return to In-School Learning

Emile Lauzzana
Executive Director, Capital Projects

Bernerd Rice
Executive Director, Physical Properties

Water Quality



- ✓ While buildings are unoccupied, flush the plumbing systems 3x per week to help prevent the growth of Legionella bacteria
- ✓ Complete the bi-annual replacement of all drinking water filters
- ✓ Test all school buildings for Lead, Ecoli and Legionella
- ✓ Remove all drinking fountain bubblers and cap openings
- ✓ Install water bottle fillers at locations of drinking fountain bubblers where feasible
- ✓ Transition to touchless restroom fixture operation for sinks, toilets, and urinals

Heating Ventilating and Air Conditioning Systems (HVAC)

- ✓ While the buildings are unoccupied, run HVAC systems at a minimum of two hours twice per week to keep them in good working order
- ✓ New Enhanced Indoor Air Quality operating mode for AAPS building HVAC systems to increase ventilation rates
- ✓ Replace all HVAC filters 3x per year
- ✓ Commission and deep clean all HVAC units
- ✓ Ensure proper working order for all restroom exhaust fans



Health and Wellness Signage



AAPS received and installing building signage, including:

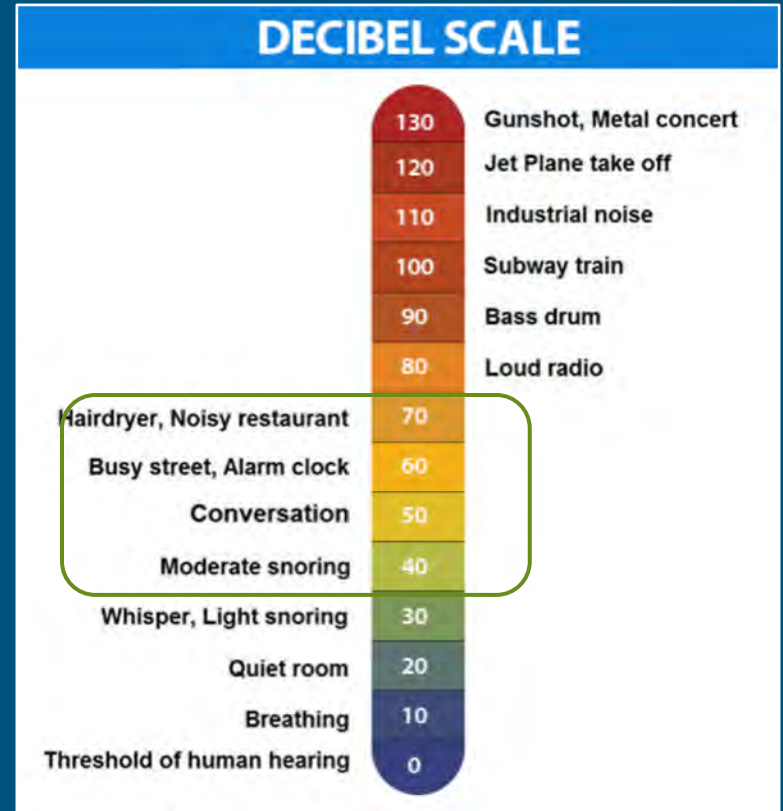
- ✓ “In-Only” and “Exit-Only” door locations
- ✓ Social Distancing Reminders
- ✓ Social Distance Floor Dots
- ✓ Self-Screening Reminders
- ✓ One-Way hallway and staircase traffic circulation –
- ✓ Walk on the right side only- “Stay in Your Lane”
- ✓ Maximum Occupancy
- ✓ Hand Washing Reminders in Restrooms

35



Portable Air Cleaners

- AAPS has received and tested noise levels of 5 models of portable air cleaners
- Classroom-scale models on the high setting generated noise in the range of 59-68 decibels
- Smaller residential-scale models on the high setting generated noise in the range of 45-59 decibels
- Additional units are being researched and ordered for testing



Update: December 16, 2020

At this time, as a result of:

- Continued high positivity rate in Wash CO, Region 1 & Michigan (MI Safe Start)
- Washtenaw County, Region 1 & Michigan remain at Level E - the highest level (12/16/20)
- Concern about contact tracing capacity and ability to obtain timely testing results
- Concern about strain on medical / hospital capacity (staffing) during the upcoming Dec weeks

Recommendation: to continue in virtual learning status, to continue to monitor these areas and update the AAPS dashboard weekly

Continue to implement additional supports & services, including small group tutoring & instruction for students who are most challenged in the virtual learning environment, beginning with highest needs special needs students

Next Steps

Daily Review & Monitoring & Weekly Posting of Metrics Status:

- AAPS team reviews public health metrics daily
- AAPS team will review metrics with the Board of Education in a briefing at least once weekly
- Posting/update of AAPS data dashboard to a2schools.org website each week
- Once overall metrics are achieved to be considered safe to begin transition to in-school learning, AAPS team will brief the Board, AAPS team, & share information with parents and community
- AAPS team will monitor during the intervening 14 days to ensure metrics hold
- AAPS will continue work to ensure readiness for the transition to in-person learning

AAPS REIMAGINE LEARNING PLAN 2020-21

NEXT STEPS FOR ALL



**CONTINUE Our
PERSONAL & COLLECTIVE
RESPONSIBILITY**

- **Wear a mask**
- **Watch your distance – 6 feet**
- **Avoid gatherings & crowds**
- **Wash your hands**

AAPS REIMAGINE LEARNING PLAN 2020-21

For more detailed information, you may view the full Reimagine Learning Plan at:

<https://www.a2schools.org/Page/16241>



Evelynn, King Elementary, Young 5

Summary: Superintendent's Update

**There are signs of hope emerging - with vaccines -
yet COVID-19 Crisis is not over & rates of positivity & infection remain high**

**We will continue to work vigorously to support our students, staff, & families in
virtual learning, enhancing & strengthening supports for students with
specialized learning needs and all students with needs**

**We continue to work vigorously to remain prepared in all areas to bring our
students & staff back into in-school learning safely & sustainably**

**Bringing our students & staff safely to a return to in-school learning
in a sustainable way remains the toughest challenge we have faced**

Winter Landscapes

Kindergarten



Lily



Matthew



Ryusei



Alexander



Neela



Sam

Penguins

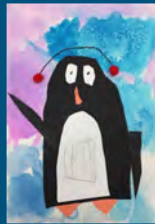
Young 5s



Pony



Anna



Paxton



Evelynn

Thank You, AAPS Art Teacher Emily Fineberg King & Angell Elementary

