



ANN ARBOR PUBLIC SCHOOLS
LEAD. CARE. INSPIRE.



Update: Reimagine Learning & Extended Continuity of Learning Plan, Fall 2020

Board of Education
Wednesday, October 14, 2020





Extended Continuity of Learning Plan Update

- **Safety Net of Supports for Children, Families, Staff & Community**
Food Distribution - Technology & Connectivity - School Supplies
- **Continue Preparations of Physical Properties for Return to In-School**
- **COVID Health Update** - **Bacolor**
- **Teaching & Learning & Schools Update** - **Parks & Linden**
Student Engagement & Supports
- **Call to Action**
- **Next Steps**

Our work may look very different now, yet our critical mission remains ever the same:

Every Child. Every Day.

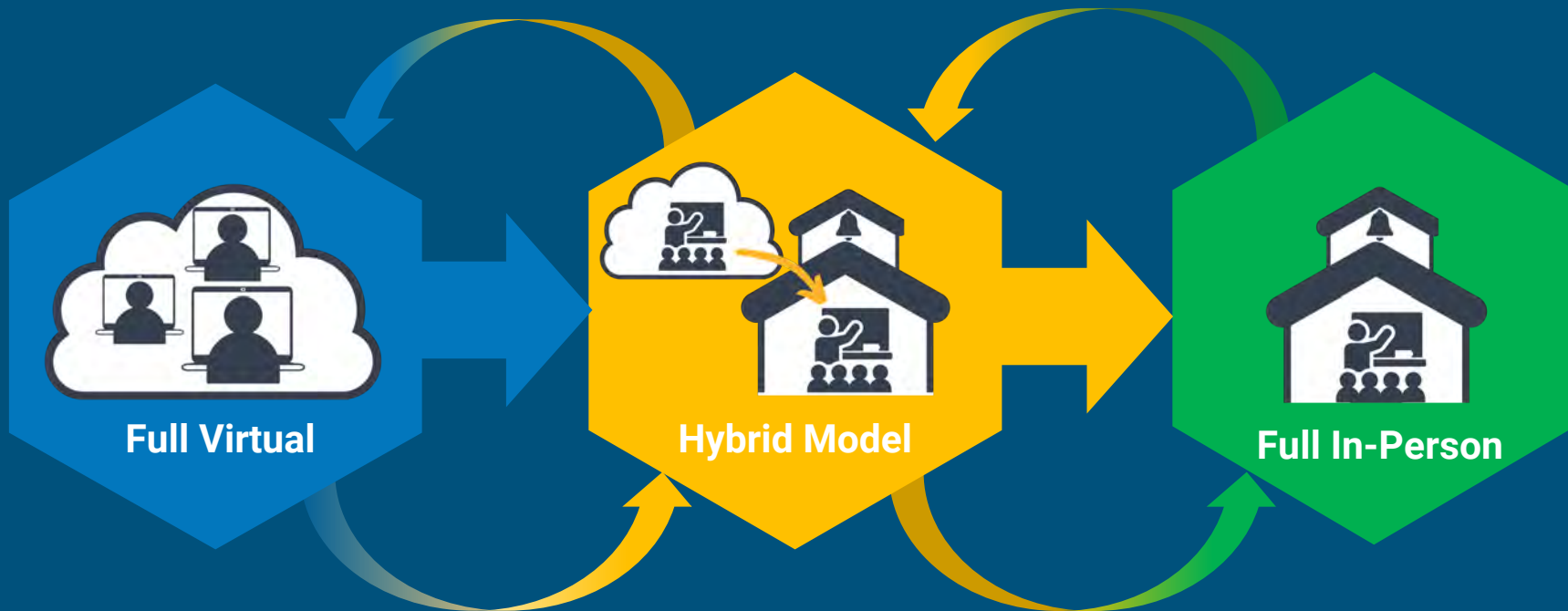
Our entire AAPS team is committed & will continue to work hard to ensure our students are healthy & safe, cared for, connected & supported, & continue their strong learning during 2020-21

**Students are our mission,
and we are on this mission!**



AAPS REIMAGINE LEARNING PLAN 2020-21

Progression to Full In-Person Classroom Learning*



** Virtual programming is available all year.*

AAPS REIMAGINE LEARNING PLAN 2020-21



Pillars of the AAPS Equity Plan

1. Perpetuating **Systems** of Equity and Opportunity
2. Courageous, Equity-Centered **Leadership**
3. Systemic Transformation of **Culture**
4. Equity-Centered School and **Classroom** Practices
5. Family and **Community** Empowerment

AAPS Food Distribution

AAPS Equity Plan - Pillar 5: Family & Community Empowerment

Action 2. Improve access to resources, and remove barriers to resources for families and individuals

Action 3. Create and connect with community partners to provide supports and services

600,216 Meals distributed since March 16

- Emergency Food Distribution continues through December 31, 2020
- Increase & serving 2,000+ students & 9,000+ meals per delivery day -
- 22 locations currently - including Connections+ groups & AAPS Athletes
- 5 locations w/ 4:30pm - 6pm distributions
- Delivery busses have Chartwell's team member to assist with distribution
- Continued home deliveries of food



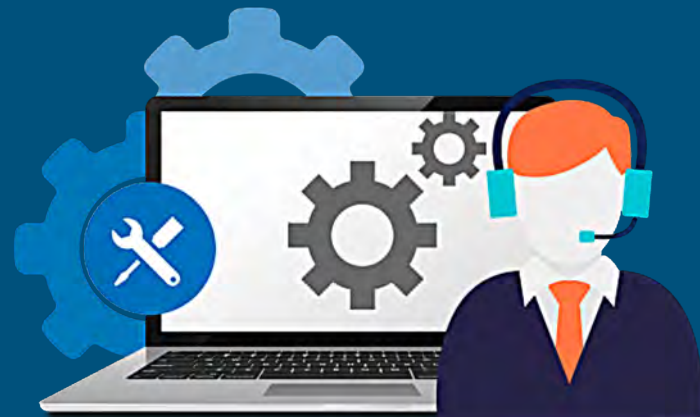
Families in need please call AAPS Food Line at 994-2265

School Supply Kit Distribution



Global Technology Infrastructure

- AAPS staff and students share the digital superhighway daily with over 1.5B education end-users
- Some level of failure or downtime may occur due to extreme usage nationwide
- Outages are typically short-lived, patchy, even unnoticeable
- Patience and alternative strategies can ease expectations and tensions
- ITD monitors all products and services, and maintains strong working relationships with vendors to ensure as much uptime as possible



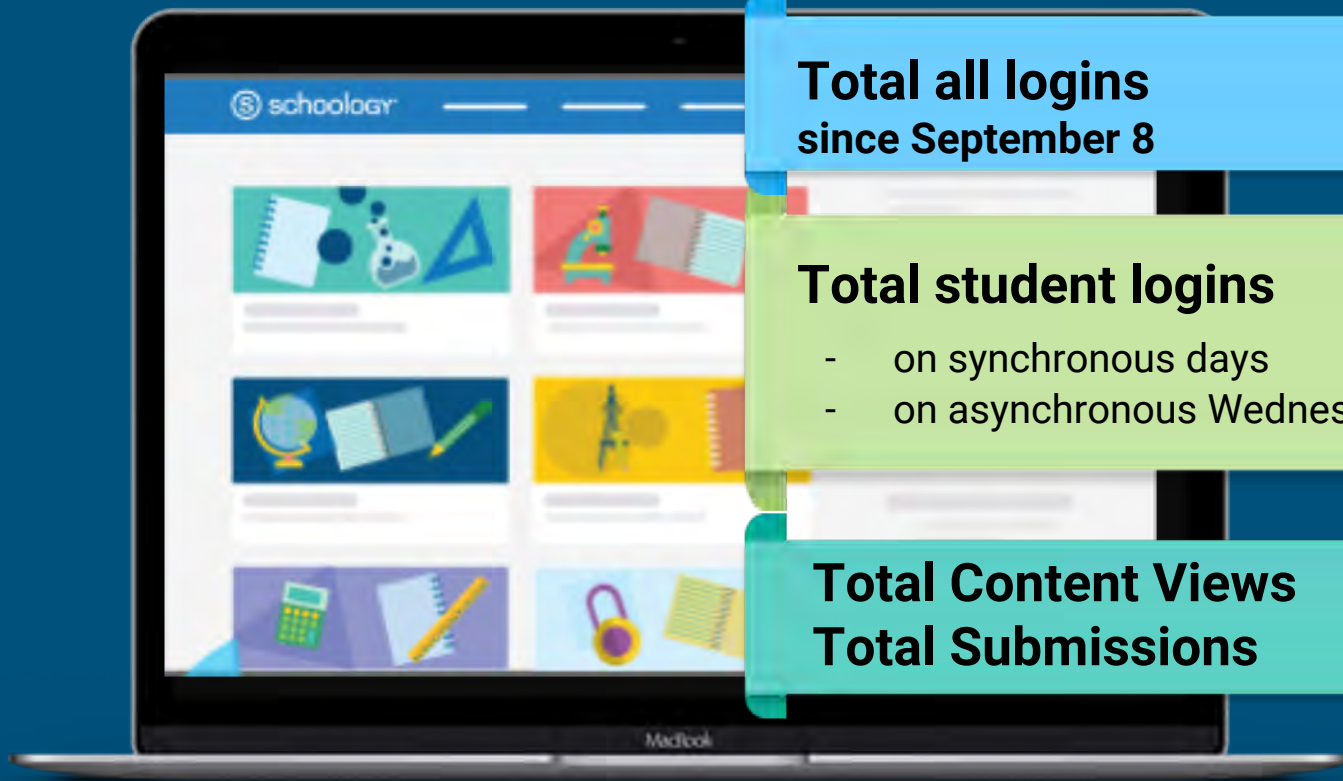
for assistance, contact the Student & Family Help Desk at 734-997-1222

Adoption of Technology

- AAPS quickly adopted and improved student access to high-quality content, engaging virtual lessons, safe learning platforms and digital tools
- Developed agility and resilience to teach, learn and collaborate
- Crawl, walk, run methodology:
 - **Crawl:** slow roll parents into Schoology
 - **Walk:** staff creates and shares instructional materials and assignments
 - **Run:** continuous improvements to overall digital educational experience



Schoology By The Numbers



**Total all logins
since September 8**

2,096,373

Total student logins

1,800,000

- on synchronous days

80,000

- on asynchronous Wednesdays

50,000

Total Content Views

6,000,000

Total Submissions

700,000

Rec & Ed - Free PK - 8 Programs



FREE Rec & Ed Youth Fall Classes!

Ann Arbor Rec & Ed staff are excited to announce a new line-up of FREE online and in-person classes for AAPS preschool - 8th graders. From yoga to soccer, and martial arts to dance, we have something every child will enjoy.





Next Steps:

- **We continue work & preparations for Return to School Buildings**
- **'Preparing Our AAPS Buildings for COVID Informed Return'**
9/30 Presentation
& 10/21 Study Session

As COVID-19 hospitalizations jump 80% in Michigan, health officials warn of possible surge

Kristen Jordan Shamus Detroit Free Press

Published 4:25 p.m. ET Oct. 13, 2020 | Updated 6:26 p.m. ET Oct. 13, 2020

Coronavirus cases are rising in Michigan and COVID-19 hospitalizations have spiked 80% in recent weeks, climbing in all regions of the state, health officials warned Tuesday.

“It is very possible that this is the beginning of a second wave,” said Dr. Joneigh Khaldun, the chief medical executive and chief deputy director for health for the Michigan Department of Health and Human Services.

“That is why we are asking everyone to remain vigilant and do these basic things: wearing masks, avoiding the social gatherings. It’s very important.”

- Dr. Joneigh Khaldun - Chief Medical Executive, Michigan

Update: October 14, 2020

At this time, as a result of:

- Level & trend of cases over previous 2 weeks in Wash CO
- Significant number of cases localized in AAPS zip codes -
- Increased cases per million & increased cases per 100,000

Comparison to similarly situated College & University towns

Recommendation is to continue in virtual learning status, to monitor the data & update the AAPS dashboard weekly with current data

Continue to implement additional supports & services, including small group tutoring & instruction for students who are most challenged in the virtual learning environment, beginning with highest needs special needs students

20-21 AAPS Virtual Opening

Students and teachers engage in virtual classes, activities, and events.

- Monitor students and add supports for students as needed
- During this pandemic time, we are working to ensure recovery services for our students over time
- During hybrid stage, students with high-impact needs who learn in small learning groups will receive additional face-to-face time
- Strategies such as Summer Academy-provided services for 500 students will continue

The Return of Our AAPS Children to In-Person Learning

- We believe the *best* place for most students to learn is in in-person learning inside our school buildings
- In-person learning is our first choice for our students when it is safe for groups to gather indoors
- Have been working to prepare our protocols & processes, operations (transportation, food service, etc), and our school buildings for in-person instruction
- In-person learning is our shared goal
- To meet the needs of some students & families, we have a plan in place where any students or families who feel they need may remain in virtual learning for the full school year

Current Work & Next Steps Fall, 2020

Call to Action for Congress

- Resources to support needed PPE for schools
- Readily available and timely testing & tracing
- Technology & Connectivity
- Food Distribution
- Literacy efforts

Process for Next Steps

Daily Review & Monitoring & Weekly Posting of Metrics Status:

- AAPS team reviews public health metrics daily
- AAPS team will review metrics with the Board of Education in a briefing at least once weekly
- Posting/update of AAPS data dashboard to a2schools.org website each week
- Once overall metrics are achieved to be considered safe to begin transition to in-school learning, AAPS team will brief the Board, AAPS team, & share information with parents and community
- AAPS team will monitor during the intervening 14 days to ensure metrics hold
- During this time, AAPS will share a proposed beginning of transition to in-person school date

Harvard Global Health Institute

“The single best policy to support school re-opening prior to the development of a vaccine or treatment is suppression of COVID to near zero case incidence.

*This can be achieved via universal mask wearing,
rigorous social distancing,
reduction or elimination of indoor congregant settings,
and Testing, Tracing and Supported Isolation.”*



Washtenaw Schools and Health Department Issue Joint Call to Action to Prevent the Spread of COVID-19

Local school and health leaders encourage everyone to continue preventing the spread of COVID-19 so schools can continue or restart face-to-face instruction throughout fall and winter. [Read on...](#)

AAPS REIMAGINE LEARNING PLAN 2020-21

NEXT STEPS FOR ALL



CONTINUE Our
PERSONAL & COLLECTIVE
RESPONSIBILITY

- **Wear a mask**
- **Watch your distance – 6 feet**
- **Wash your hands**

AAPS Reimagine Learning Plan

For more detailed information, you may view the full Reimagine Learning Plan at:

<https://www.a2schools.org/Page/16241>

Superintendent's Update Summary

This COVID-19 Crisis is far from over

We will continue to work vigorously to support our students, staff, & families

We continue to work vigorously on all the steps to bring our students & staff back into our schools safely

Bringing our students & staff safely to a return to in-school learning in a sustainable way

Is the toughest challenge we face

ANN ARBOR PUBLIC SCHOOLS

LEAD. CARE. INSPIRE.



COVID-19 Health Update



ANN ARBOR PUBLIC SCHOOLS
LEAD. CARE. INSPIRE.



AAPS REIMAGINE LEARNING

Extended Continuity of Learning Plan UPDATE

2020-21