

The logo for Ann Arbor Public Schools is centered at the top. It features the text "ANN ARBOR PUBLIC SCHOOLS" in a white, sans-serif font, with the tagline "LEAD. CARE. INSPIRE." below it in a smaller font. The text is enclosed in a stylized orange frame that consists of a top horizontal line, a bottom horizontal line, and two vertical lines on the left and right sides. To the left of the frame, a green line extends from the top left corner towards the center. Below the text, there are three square icons: a blue square with a white star, a red square with a white heart, and a yellow square with a white exclamation point.

ANN ARBOR PUBLIC SCHOOLS  
LEAD. CARE. INSPIRE.

# Superintendent Fall Update

**PTO Council**  
**Monday, September 21, 2020**

A green L-shaped line is located in the bottom right corner of the slide, consisting of a vertical line on the right and a horizontal line at the bottom.



- Introduction
- Safety Net of Supports for Children, Families, Staff & Community
- AAPS Reimagine Learning 20-21 Guiding Principles
- COVID-19 Update
- AAPS Learning Plan
- Return to In-Person, In-School Learning Plan
- Our Current Work & Next Steps
- Fall 2020 Update

Our work may look very different now, yet our critical mission remains ever the same:

**Every Child. Every Day.**

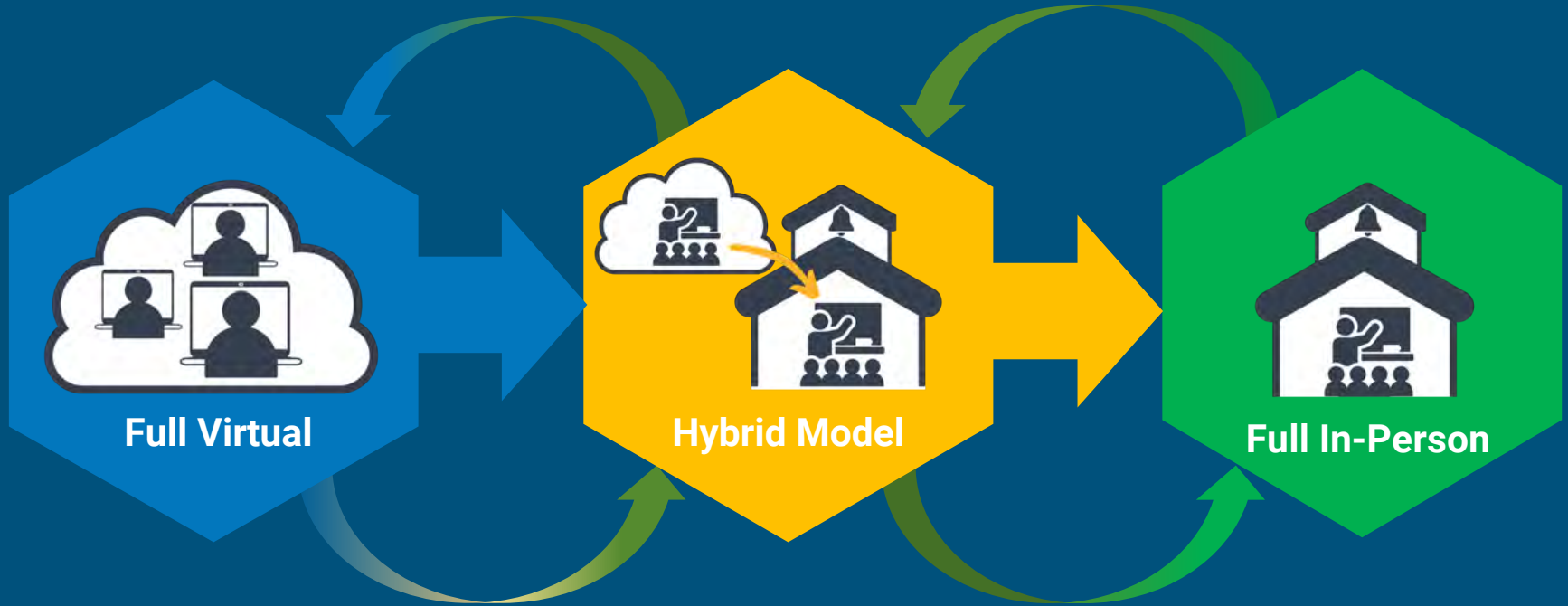
Our entire AAPS team is committed & will continue to work hard to ensure our students are healthy & safe, cared for, connected & supported, & continue their strong learning during 2020-21

**Students are our mission,  
and we are on this mission!**



# AAPS REIMAGINE LEARNING PLAN 2020-21

Progression to Full In-Person Classroom Learning\*



\* Virtual programming is available all year.

# AAPS REIMAGINE LEARNING PLAN 2020-21

*I know that this is not what you want, and I cannot tell you  
how much I wish things were different.*

*We'll do the best we can with the options we have,  
but I get it if you're really unhappy about it.*

Lisa Damour, Psychologist & Adolescence columnist

*My 14-Year-Old Isn't Socially Distancing. What Should I Do?*

New York Times, May 22, 2020

# FOOD DISTRIBUTION



# AAPS Food Distribution

**535,000 Meals distributed since March 16**

**AAPS Equity Plan - Pillar 5: Family & Community Empowerment**

Action 2. Improve access to resources, and remove barriers to resources for families and individuals

Action 3. Create and connect with community partners to provide supports and services

- Summer Emergency Food Distribution continue through December 31, 2020
- 22 locations currently (1 recently added - Huron)
- 5 locations w/ 4:30pm - 6Pm distributions
- Busses have Chartwell's team member to assist with distribution
- Home deliveries of food will be restarting
- Families in need please call Food Line at 994-2265



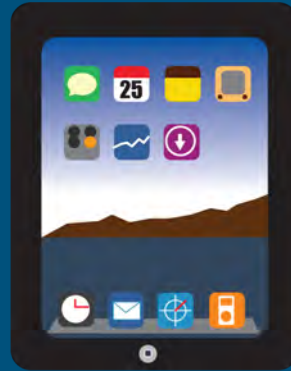
# Free & Reduced Lunch Applications

- Now available on website – can apply online
- Hard copy available on request
- Hold-over approvals good only for 30 days
- Breakfast & lunch at distribution locations during remote learning
- Questions – Call 734-994-2265 or Email [foodservice@aaps.k12.mi.us](mailto:foodservice@aaps.k12.mi.us)



# Distribution of Technology Devices

- New and refurbished district devices, preconfigured and customized for each level
- 16,500 devices distributed through drive-through to issue district device to every student
  - Y5/K-1st grade – iPad
  - 2nd – 12th grade – Chromebook
- 200+ Hotspots
- 20,000+ Tech Help Calls addressed



[200.mily\\_techsupport@aaps.k12.mi.us](mailto:200.mily_techsupport@aaps.k12.mi.us)

# Next Steps: Support of Connectivity for AAPS Students & Families

- Purchase of **Kajeet** for added data & renewal of 250 of 500 existing hotspots (student hotspots w/ CIPA compliant filtering built in)
- Sign a **Comcast Essentials Sponsorship agreement**
  - allow AAPS to offer toll free number for families in need of reliable internet
  - internet-only Comcast services for \$9.95 month
  - agreement would allow the AAPS to pay the monthly charge
- **Continue to purchase** a small number of **hotspots** through existing Verizon contract

## Other Next Step WiFi Opportunities:

- Outfitting AAPS **school buses** to be parked & equipped to 'push out' WiFi
- Verifying & outfitting our **outreach centers** with added WiFi as needed
- Creating '**school in a bag**' **WiFi kits** that can be used by staff members

# School Supply Kit Distribution

- Supply kit distribution dates will be coming over the next 2 weeks by grade level & school
- Watch for more specific information from your school principal
  - Musical instruments also distributed
  - Return of books from last school year
  - Distribution of Fall, 20-21 Textbooks & Workbooks
  - PLTW Kits for middle school

# Rec & Ed - Free Fall Programming

Ann Arbor Rec & Ed staff are excited to announce a new line-up of FREE online and in-person classes for AAPS preschool - 8th graders.

Our goal is to provide a variety of fun, physically active experiences with opportunities to see classmates safely in person. From yoga to soccer, and martial arts to dance, we have something every child will enjoy.

Visit [aarecedonline.com](http://aarecedonline.com) for more info and to register

<p><b>ABBOT</b></p> <p>Creative Dance &amp; Movement Hio Hio Dance Kids Power Karate Little Ninjas Soccer Yoga</p> <p>COVID-19 INFO &amp; WAIVER</p>	<p><b>ALLEN</b></p> <p>Creative Dance &amp; Movement Hio Hio Dance Kids Power Karate Little Ninjas Soccer Yoga</p> <p>COVID-19 INFO &amp; WAIVER</p>
<p><b>A2 STEAM @ NORTHSIDE</b></p> <p>Hio Hio Dance Kids Power Karate Little Ninjas Soccer Tennis Yoga</p> <p>COVID-19 INFO &amp; WAIVER</p>	<p><b>BACH</b></p> <p>Creative Dance &amp; Movement Kids Power Karate Little Ninjas Soccer Yoga</p> <p>COVID-19 INFO &amp; WAIVER</p>

The logo graphic consists of a blue rectangular frame with an orange border. Inside the frame, the text "ANN ARBOR PUBLIC SCHOOLS" is centered in white, uppercase letters. Below it, the tagline "LEAD. CARE. INSPIRE." is centered in smaller, white, uppercase letters. At the bottom of the frame, there are three colored squares: a blue square with a white star, a red square with a white heart, and an orange square with a white exclamation point.

ANN ARBOR PUBLIC SCHOOLS

LEAD. CARE. INSPIRE.



# REIMAGINE LEARNING PLAN 2020- 21

Guiding Principles & Core Values

# AAPS REIMAGINE LEARNING PLAN 2020-21



# A Foundation of Social Justice and Anti-Racism

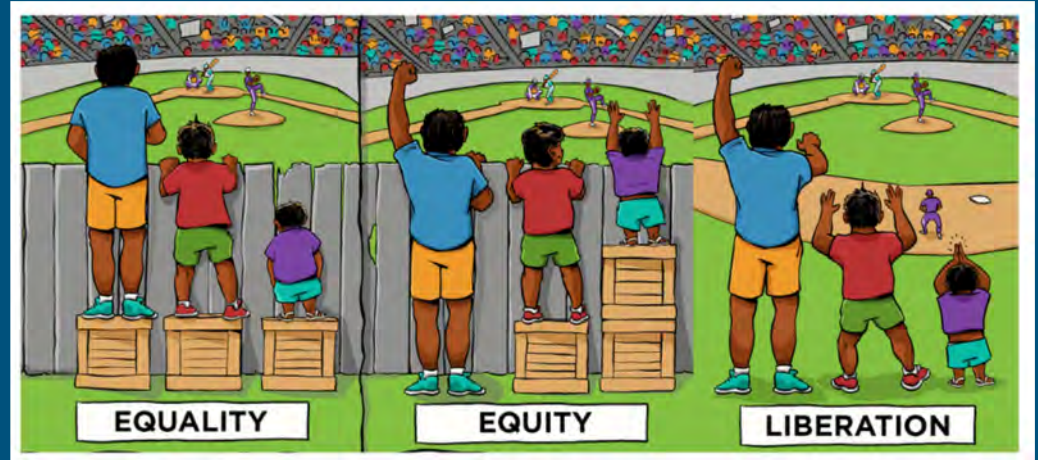
- We continue our focused work to achieve equity & opportunity for all students in the AAPS, with attention to black and brown students who have been underserved.
- We ask: *In the Ann Arbor Public Schools and in the Ann Arbor community, in what ways will we hold ourselves and each other in continuing conversation to ensure direct action steps in our ongoing and focused work to move forward in ensuring a foundation of anti-racism & social justice.*
- Now is a critical time and opportunity to ensure we build a Reimagine Learning Plan 2020-21 to serve black and brown & students from poverty well to ensure equity, social justice, and opportunity.

# Pillars of the AAPS Equity Plan

1. Perpetuating **Systems** of Equity and Opportunity
2. Courageous, Equity-Centered **Leadership**
3. Systemic Transformation of **Culture**
4. Equity-Centered School and **Classroom** Practices
5. Family and **Community** Empowerment

# AAPS Definition of Equity

Equity is the moral responsibility of each member of our learning community to take the intentional actions necessary to create a learning community free of barriers, biases, and disproportionality for each and every person regardless of personal characteristics and social circumstances.



# Summer Learning, 2020 Update

*Serving our Students to Remain Engaged – To Catch Up, Keep Up, Move Up*

- Many Thanks to Summer Teachers, Leaders & Staff **+350**
- Thanks to **4,500+** Students & Parents Participating (some students participating for all weeks, some are for fewer weeks)
  - ★ **Elementary – 900 Students each week**  
(Summer Adventure Games, Summer ESL Academy)
  - ★ **Middle – 700 students each week**  
(MS Summer Challenges, Summer ESL Academy, Scarlett Learning Academy)
  - ★ **High – 2,000+ student enrolled**  
(EL Bridge, Academic Youth Development AYD Math, SAT Prep, HS Summer School, A2Virtual, Support to complete spring incompletes)
  - ★ **Special Education – 450 students - Recovery Services**  
(Extended School Year, Project READ, SISS Summer Academy Service Provision)
- AAPS Summer Programming designed using same tools in interactive online learning that we will use this fall, including Schoology



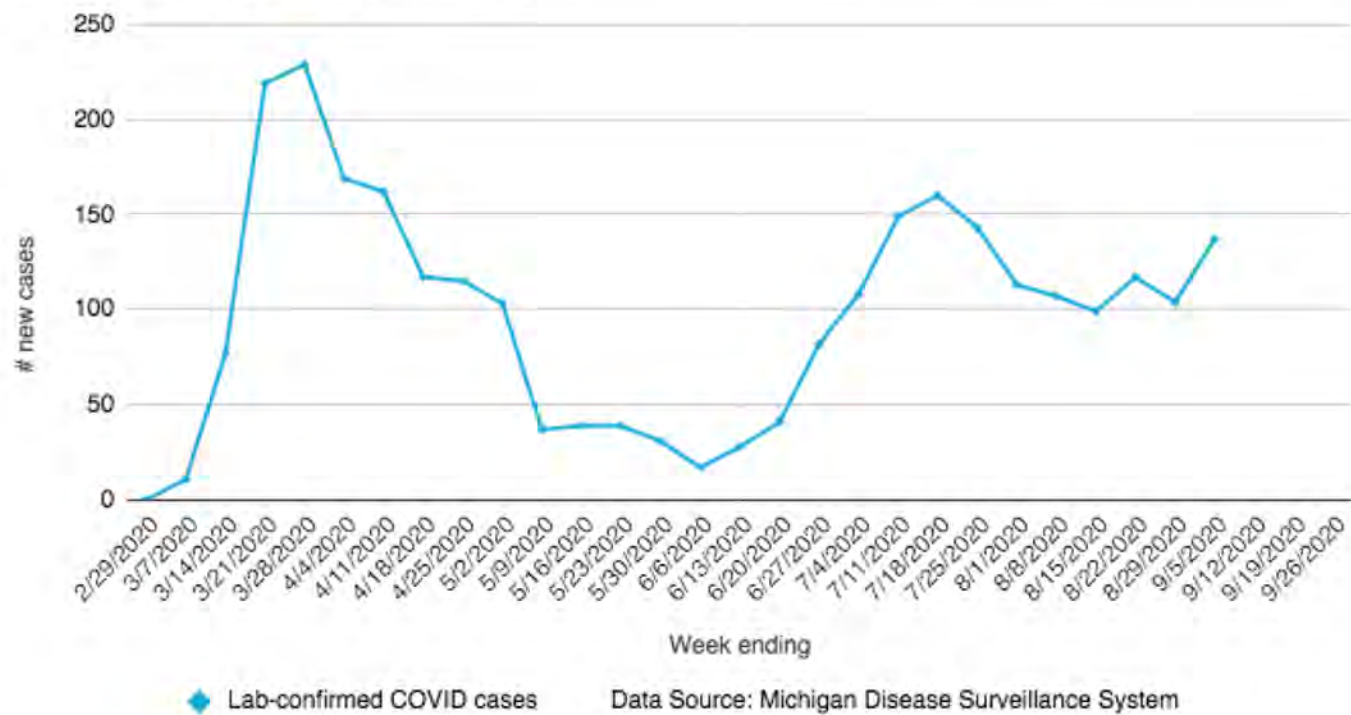
ANN ARBOR PUBLIC SCHOOLS  
LEAD. CARE. INSPIRE.



# COVID-19 Information Update

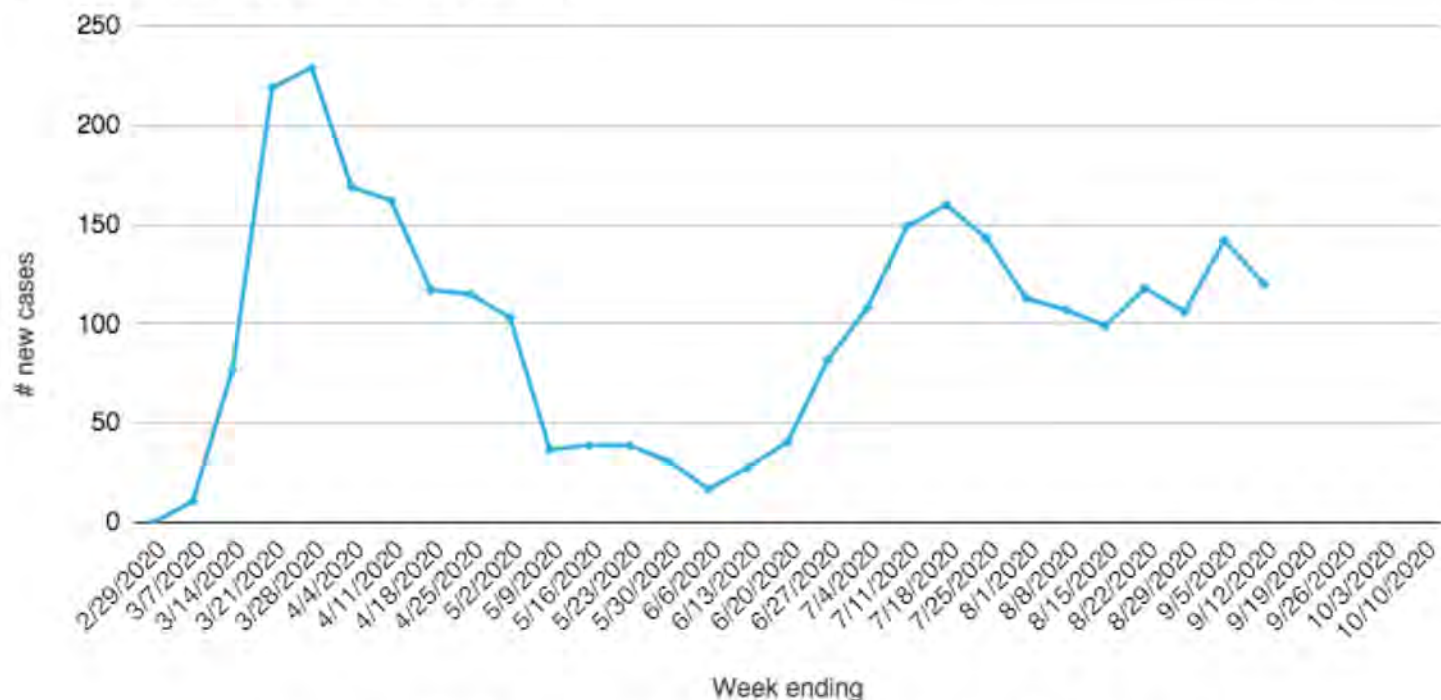
# New Confirmed COVID-19 Cases in Washtenaw County Residents (by Symptom Onset Week)\* (as of 9/11), updated weekly

Washtenaw County 2020 (total N = 2853)



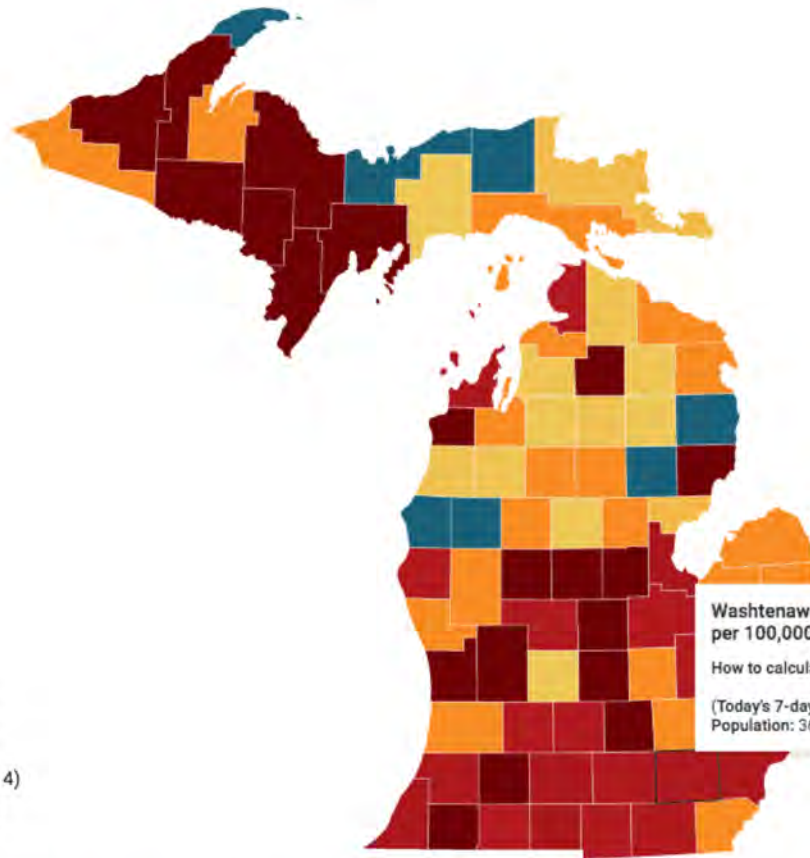
## New Confirmed COVID-19 Cases in Washtenaw County Residents (by Symptom Onset Week)\* (as of 9/18), updated weekly

Washtenaw County 2020 (total N = 2945)



◆ Lab-confirmed COVID cases

Data Source: Michigan Disease Surveillance System



**Case Thresholds**

- Very High ( $\geq 7$ )
- High (4 - 7)
- Medium High (2 - 4)
- Medium (0.7 - 2)
- Low ( $< 0.7$ )

**Washtenaw County: 5.13 cases per 100,000 residents**

How to calculate this number:

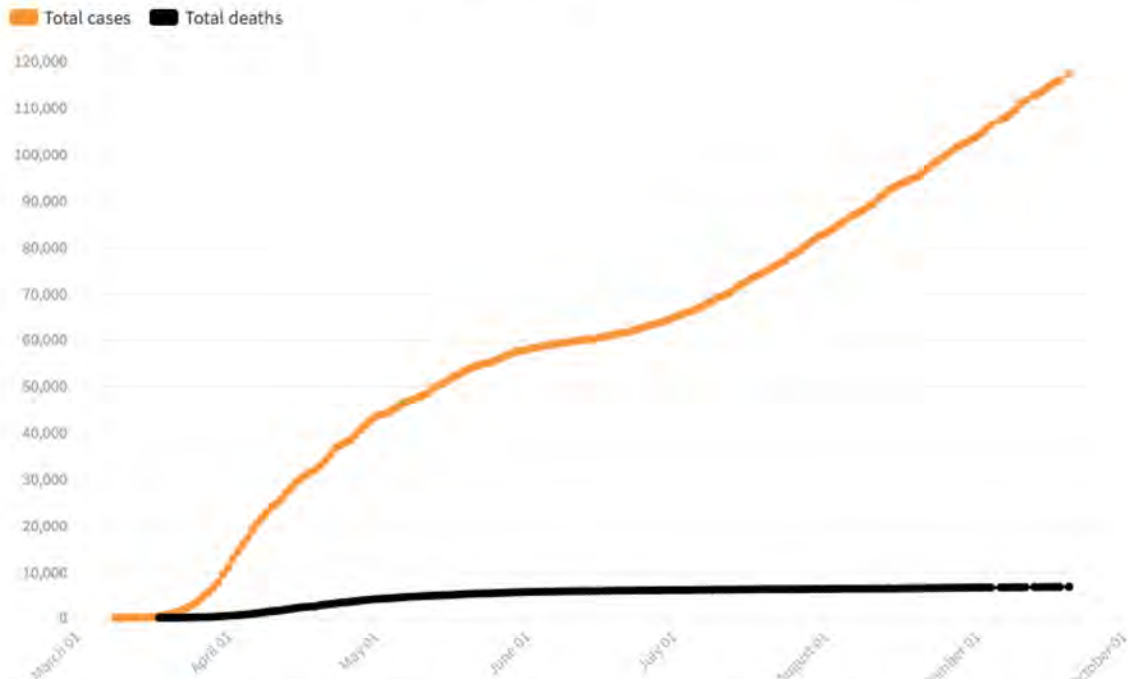
(Today's 7-day case average: 18.9 ÷ Population: 367,601) × 100,000

Case thresholds are dictated by [MI Safe Start map](#), adjusted for 100k. As of Sept. 6, the state is no longer reporting COVID-19 cases and deaths on Sundays. Data from Sunday are now included in Monday's numbers.

Map: Nisa Khan • Source: [Michigan.gov](#) • [Get the data](#) • Created with [Datawrapper](#)

## The trend over time

The number of cases jumped from 80 to 324 March 19 as cases confirmed at private labs were included. The same day, the first COVID-19 death in the state was reported — a Southgate man in his 50s — and the number has risen sharply since.



The May 4 count is representative of data in the Michigan Disease Surveillance System as of 4 p.m. on May 4, 2020. However, as the data backlog is still processing from a software issue, that day's numbers are not representative of the full data set since the May 3 report. On July 25 and Aug. 9, the state reported a decrease in total deaths, as previous deaths were removed from the total after a records review.

# CDC GUIDING PRINCIPLES FOR RETURN TO SCHOOL

The more people a student or staff member interacts with, and the longer that interaction, the higher the risk of COVID-19 spread. The risk of COVID-19 spread increases in school settings as follows:

**Lowest Risk:** Students and teachers engage in virtual-only classes, activities, and events.

**More Risk:** Small, in-person classes, activities, and events. Groups of students stay together and with the same teacher throughout/across school days and groups do not mix. Students remain at least 6 feet apart and do not share objects (e.g., hybrid virtual and in-person class structures, or staggered/rotated scheduling to accommodate smaller class sizes).

**Highest Risk:** Full sized, in-person classes, activities, and events. Students are not spaced apart, share classroom materials or supplies, and mix between classes and activities.

<https://www.cdc.gov/coronavirus/2019-ncov/community/schools-childcare/schools.html>

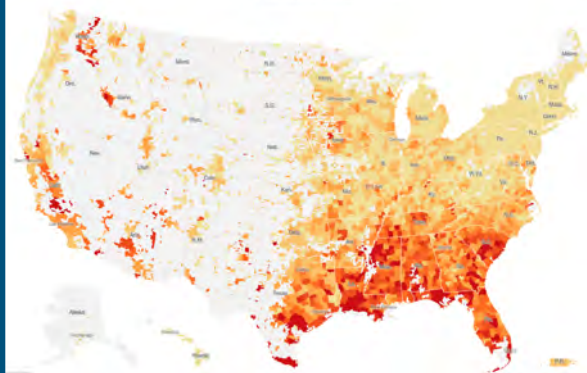
# CURRENT COVID REALITY

during weeks since the end of May, increasing cases in Washtenaw County, Reopen Michigan Region, Michigan & U.S.



**STATE OF MICHIGAN**  
Increase in cases since May

**U.S. CORONAVIRUS CASES**  
Highest number since beginning of pandemic with increasing death rates



**WASHTENAW COUNTY**  
Increase in cases since June 6th



**ANN ARBOR REGION/  
DETROIT AREA**  
Medium-High risk

# COVID Concerns

## Rising Number of Cases

Washtenaw Co, Reopen MI Region, Michigan and U.S.

## Emerging Research/Data

Rising % of cases among children & teens & transmission 10-19 year-olds, asymptomatic transmitters

## Unknowns About COVID

short & long-term impacts, aerosol transmission

## Still Unmet Needs

Readily available testing & timely results, contact tracing & sustainable PPE supplies

# COVID REALITY

## Summer Camps Bring Virus Warning

[https://www.washingtonpost.com/opinions/this-summer-camp-took-extraordinary-covid-19-precautions-it-still-failed/2020/07/14/998e172e-c22a-11ea-b178-bb7b05b94af1\\_story.html](https://www.washingtonpost.com/opinions/this-summer-camp-took-extraordinary-covid-19-precautions-it-still-failed/2020/07/14/998e172e-c22a-11ea-b178-bb7b05b94af1_story.html)

## Older Children Spread COVID Same as Adults

*S. Korea study of 65,000 people*

<https://www.bloomberg.com/news/articles/2020-07-19/covid-19-spread-fastest-by-teens-and-tweens-korea-study-finds>

**Children and teens, are accounting for a rising percentage of infections in the U.S.**

## Childcare center outbreaks

<https://www.charlotteobserver.com/news/coronavirus/article244050757.html>

# AAPS Metrics & Decision-Making to Begin Transition of Students to In-Person Learning

- Will need to achieve very low rates of transmission over a sustained period of time – to clarify, the goal is not ‘zero’ cases
- “As for schools, they should begin instruction virtually and hold off on in-person plans until October; it will take 3-4 weeks for the new restrictions to have an effect and a few more weeks to ensure that the trend holds.”

-Lena S. Wen, Emergency Physician & former Baltimore Health Commissioner  
*Here's What it Could Look Like If Schools Reopened Today*

# UNANSWERED QUESTIONS WITH COVID

**Students have not been together with staff in school classrooms since mid-March**

❓ *What will be the nature of transmission in a classroom/school setting*

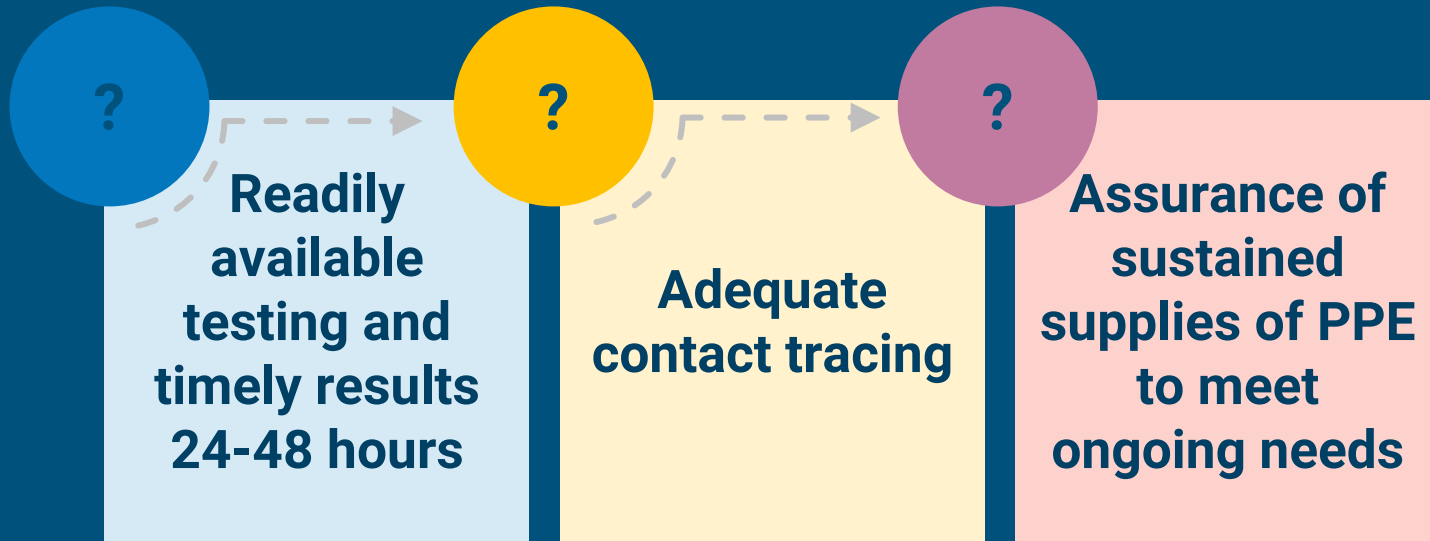
## **Infection Risks**

❓ *Short, medium & long-term impacts of contracting COVID for small children, older children, and adults*

## **Transmission of Virus**

❓ *Clear understanding of science of transmission via droplets from a cough, sneeze and possibility of aerosolized droplets and the distinct impact of talking, singing and participating in congregant activities together*

# FUNDAMENTAL CONCERNS AND ONGOING NEEDS FOR A CONFIDENT FULL REOPENING





During COVID-19, **healthcare providers are taking steps to keep you and your family safe.**

Don't delay recommended vaccines.

**#CatchUpGetAhead**

Learn more at [Vaccines.gov](https://www.vaccines.gov)



 **vaccines.gov**  
*your best shot at good health*



# REGIONAL ALLIANCE FOR HEALTHY SCHOOLS SCHOOL-BASED HEALTH CENTERS



## IMMUNIZATION MONTH AUGUST 2020

Pathways to Success Acadmic Campus  
(734) 973-9167

Additional RAHS School-based Health  
Center locations in Ypsilanti & Ann Arbor.  
Visit <https://umhs-rahs.org> for a complete  
listing of locations & services.

### CALL TO SCHEDULE AN APPOINTMENT

To allow for safety and social  
distancing, visits are by appointment  
only. Call Today! 734-973-9167

### NOT REGISTERED WITH RAHS?

Go to the RAHS website and click  
Forms -<http://umhs-rahs.org/>

### INTERPRETERS & DOCUMENT TRANSLATIONS AVAILABLE

"Si tiene usted preguntas, por favor, contacte con el personal del centro de salud al 877-810-4719 y se pedirá un intérprete. Vamos a necesitar su número de teléfono para devolverle la llamada."

"إذا كان لديك أسئلة، يرجى الاتصال بموظف مركز الصحة على الرقم 855-800-9252 و مترجم شفوي يمكن توقيته. وسوف نحتاج إلى رقم هاتفك للاتصال بك."

*We are open to all school-age youth 21 years old and younger. You do not need to be a registered student at these schools to receive services. We accept insured and uninsured patients, regardless of ability to pay.*



# Immunizations and Health

- Maintain up-to-date immunization schedule
- State law requirements for new students
- For more information, visit <https://sites.google.com/aaps.k12.mi.us/nurses-resources/school-nurse-care-corner>





ANN ARBOR PUBLIC SCHOOLS  
LEAD. CARE. INSPIRE.

# AAPS REIMAGINE LEARNING PLAN

## 2020-21

# 20-21 AAPS Virtual Opening

Students and teachers engage in virtual classes, activities, and events.

- Monitor students and add supports for students as needed
- During this pandemic time, we are working to ensure recovery services for our students over time
- During hybrid stage, students with high-impact needs who learn in small learning groups will receive additional face-to-face time
- Strategies such as Summer Academy-provided services for 500 students will continue

# Fall 2020 Return to Learn Information

## [AAPS Website – a2schools.org](https://a2schools.org)

- 2020-21 School Calendar
- Sample Daily Class Schedules
- Parent Preparation Checklist (week of August 31)
- Technology distribution schedule & locations
- Schoology video overview
- Free & Reduced Lunch Applications

# AAPS REIMAGINE LEARNING PLAN 2020-21

Visual & Performing Arts, *Project Lead the Way*, World Languages  
Full Quality Program Offerings Continue

Continue to provide the high quality arts instruction in the AAPS that our AAPS community expects and enjoys virtually, through teacher modeling and providing group & individual feedback

Students are creating, producing and responding to art, music, and theater asynchronously and synchronously

Arts teachers are able to virtually meet with and rehearse groups in the performing arts, provide continuing guidance and feedback for visual arts

Student product, production or presentation can be viewed virtually as well as use of App/software where musicians can rehearse and record music in real time, create a final product, & upload to Schoology

# Schoology Learning Platform

## Parent and Student Orientation Learning Session

- Virtual "Meet & Greet" week of August 31
- Questions and live tech support  
7:30 am – 5:00 pm 734-997-1222  
[family\\_techsupport@aaps.k12.mi.us](mailto:family_techsupport@aaps.k12.mi.us)



# School Library, Textbooks, Supplies & Materials

- Digital Library
  - accessible online 24/7 through Schoology platform and other applications
- Textbooks, Supplies & materials
  - Coordinated distribution

ANN ARBOR PUBLIC SCHOOLS  
LEAD. CARE. INSPIRE.



# District-Wide Digital Library OverDrive Sora

# THANK YOU TO OUR COMMITTEE MEMBERS

## **Coordinators:**

Jennifer Colby  
Anne Reader  
Katherine Burhill  
Maggi Rhode  
Caroline Hughes  
Erica Hatt

## **Members:**

Sharyl Burau  
Anne Callison  
Michael Chmura  
Elizabeth Clarke  
Christine Deucher  
Janet Duncan  
Rachel Erdstein  
Sally Evaldson  
Marlana Evans  
Carolyn Hill  
Kyle Kipp  
Laurel Maguire  
Lynne McHale

Kim McLean  
Tahani Othman  
Connie Peurach  
Lisa Pham  
Shakira Player  
Chrissie Postema  
Nate Powell  
Sarah Rentz  
Amy Rodriguez  
Jeri Schneider  
Deborah Shrek  
Lindsey Szurek  
Lauran Warren  
Christine Woelmer

# Why OverDrive Sora?



## Equity and Opportunity

Equitable  
Digital Access  
District-wide

Diverse Authors  
and Culturally  
Representative  
Texts

Personalized  
Independent  
Choice  
Reading

## Social Justice

Instructional  
Small Group  
Texts

Ease of Use

Interoperability  
with Schoology

## Anti- Racism

# What is OverDrive - Sora?



OverDrive Sora is a **digital library** accessible to all students on any device. Our students and families can **search for a book, text or audio files** through a user friendly interface and **check it out** through either a browser, within Schoology and/or via the Sora app.

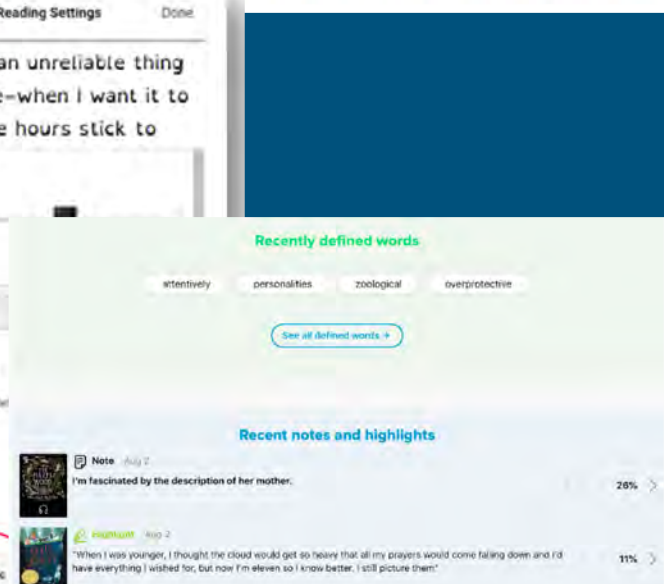
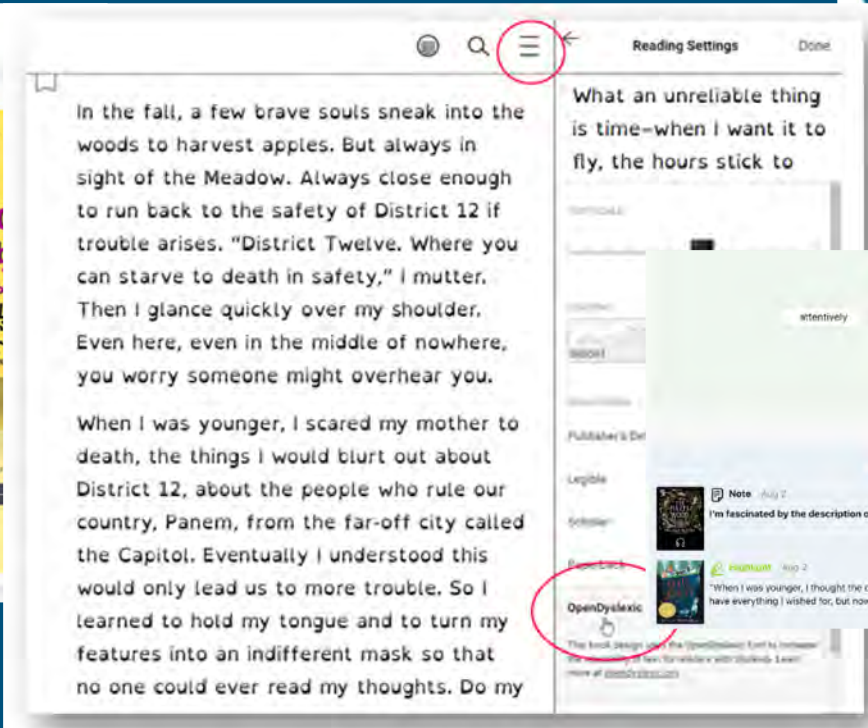
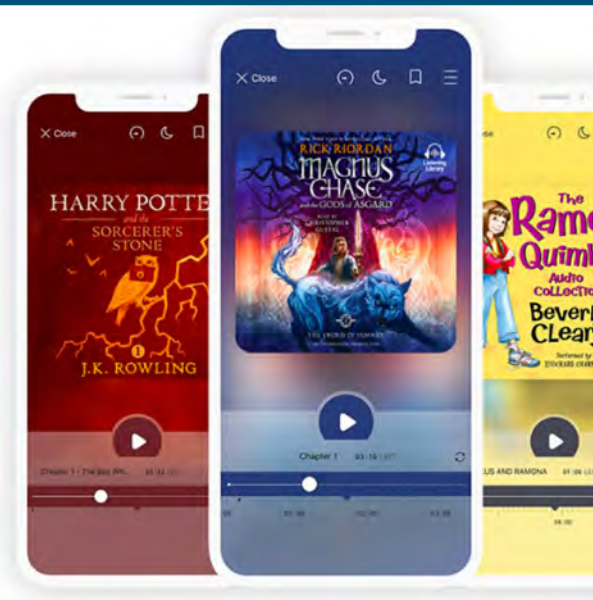
When the book is due, it is **automatically returned**.

# How does OverDrive support learning inside and outside the classroom?



- Includes **millions of titles** and over 30,000 publishers and **45 languages**.
- Includes **annotation tools** (digital sticky notes, highlighter, linked dictionary, and bookmarks) to support digital reading comprehension. All notes can be exported to Google Drive.
- Provides **Universal Supports such as dyslexic font** for greater letter contrast and font adjustment in order to enable better accessibility for all.
- Allows for our students to add the AADL digital collection to their AAPS Sora/OverDrive app and search for books in both collections at the same time.
- Allows librarians to curate digital collections of books that reflect **different interests, identities, and communities of readers** to aid in book selection by genre, subject, series, or author.
- Teachers can select and **assign titles to students and to classes**.

# Support for Readers



ANN ARBOR PUBLIC SCHOOLS  
LEAD. CARE. INSPIRE.



# Elementary Digital Levelled Library Renaissance myOn



# Why Renaissance myOn?

## Equity and Opportunity

PK-5 Digital Levelled Instructional Text

Diverse and Culturally Representative Texts

Designed for Reading Instruction

## Social Justice

Thousands of Non-fiction and Fiction Texts

Multiple Text on Same Topic

Interoperability with Schoology

## Anti-Racism

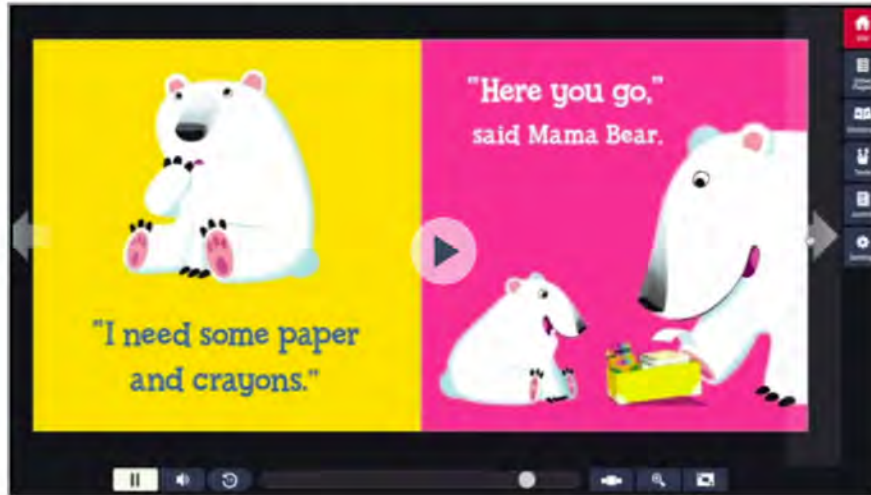
# What is Renaissance myOn?



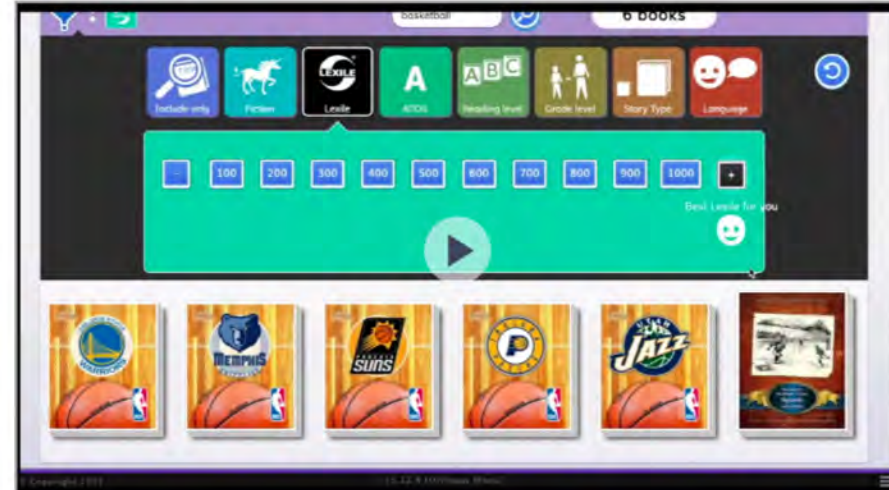
- myON is a **digital library** created for reading instruction in **preschool and elementary** classroom settings.
- Texts can be utilized by all staff including SISS staff, English Language (EL) teachers or Building Literacy Experts (BLEs) during **small group instruction and intervention**.
- myON provides **anytime access** to instructional texts, eliminating inequities based on the fundraising capacity of the community.
- myON gives teachers and students access to digital, leveled books to ensure our **robust reading instruction** continues whether we are virtual or face-to-face.
- myON's digital library can be read by an **unlimited number of students** at a time.

# Renaissance myOn Student View

## Pre-K through Grade 1



## Elementary Students



# How Does Renaissance myOn support learning?

RENAISSANCE

myON

- Interest survey provides students with a **customized match** of topics and levels.
- Access to **audio support** for all titles and text in **English and Spanish**.
- Offers **close reading tools and scaffolds** to support individual student needs.
- Allows teachers and students to **set reading goals together** and monitor and celebrate progress.
- Provides a **dashboard view of students' goals progress**.

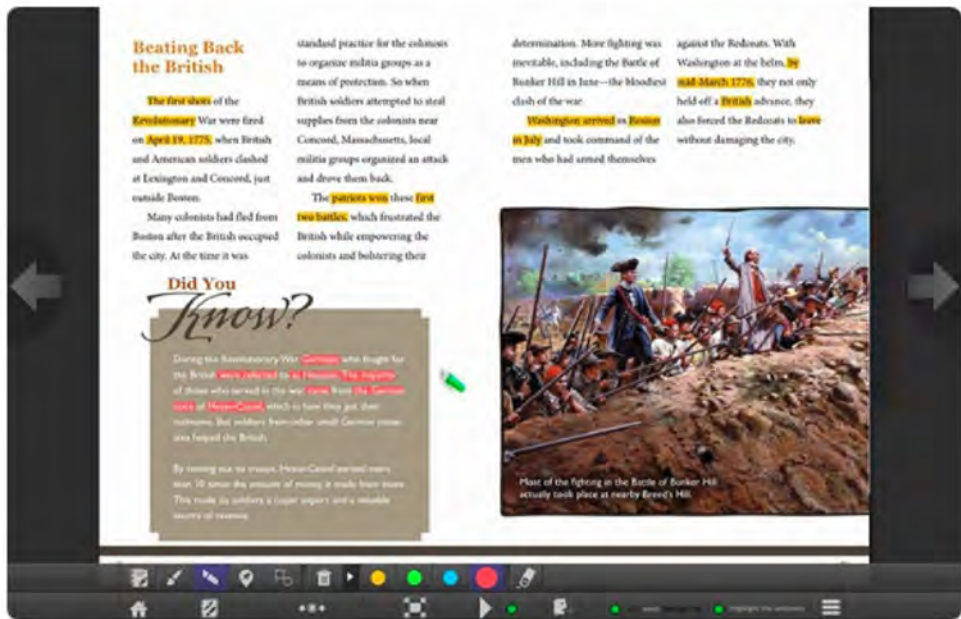
# How Does Renaissance myOn support struggling readers?



## Close Reading

The built-in highlighter, shapes tool, and drawing brush encourage close reading, allowing students to identify evidence, make connections, and mark-up key photos and illustrations in ways not possible with shared physical texts or e-book subscriptions.

Teachers can view students' comments and respond in the text, providing a quick formative assessment opportunity.



# Additional support struggling readers



The screenshot shows the Snap & Read Universal settings interface. It is divided into three main sections: COLOR, SPEAK, and TEXT COMPLEXITY. Under COLOR, there are options for Text Color (set to black) and Word Highlight Color (set to green). Under SPEAK, the user name 'Alex' is shown with a dropdown arrow, and 'Autospeak' is turned 'On'. Below this are three sliders for volume and speech rate, each with a speaker icon and a volume symbol. Under TEXT COMPLEXITY, there is a single slider with a three-dot menu icon to its right.

The screenshot shows a web browser displaying a New York Times article. The URL is [www.nytimes.com/2016/01/20/us/obama-set-to-meet-with-mayor-of-flint-about-water-crisis.html?hp&action=click&pgtype=Homepage](http://www.nytimes.com/2016/01/20/us/obama-set-to-meet-with-mayor-of-flint-about-water-crisis.html?hp&action=click&pgtype=Homepage). The article title is "The New York Times". The main text discusses Gov. Rick Snyder's apology for the Flint water crisis. Two annotations are present: an orange box labeled "Before:" highlights the sentence "He pledged to promptly release his emails about the issue, and laid out more specifics"; a green box labeled "After:" highlights the simplified sentence "He promised to quickly release his emails about the issue, and laid out more details". The article text includes: "LANSING, Mich. — Gov. Rick Snyder issued an apology on Tuesday to the residents of Flint for a contaminated water supply. He promised to quickly release his emails about the issue, and laid out more details about the state's handling of the crisis." and "I'm sorry, and I will fix it," Mr. Snyder said in a prepared statement. He said he would address the issue in a speech to the Michigan State address in which he took the unusual step of focusing on a painful issue that has used/ate/drank/destroyed the state lately and has drawn strong criticism from national politicians. "No person (who lawfully lives in a country, state, etc.) of this great state should last through/tolerate this kind of terrible event. Government failed you — federal, state and local leaders — by breaking the trust you place in us."

# AAPS REIMAGINE LEARNING PLAN 2020-21

## ACCELERATED LEARNING

Students may choose from wide spectrum of options:

- AAPS accelerated classes: advanced placement, university dual enrollment, and community resource classes/opportunities
- International Baccalaureate Programme
- World Language, and other opportunities
- Partnership with Washtenaw Community College



# AAPS REIMAGINE LEARNING PLAN 2020-21

## SPECIALIZED SUPPORTS FOR STUDENTS WITH SPECIAL NEEDS

- **Learning through synchronous, online instruction**  
Including service provision to support IEP w/ Teacher Consultants & other Special Education professionals consistently working w/ students
- **Specialized Services provided to meet IEP**
- **Additional supports**  
Including service provision and paraprofessional support
- **Instruction driven by Universal Design for Learning (UDL) framework**
- **Social Emotional Learning (SEL)**



# Highlights of Work to Meet Needs of Students Individual Education Plan

## ***Will instruction and related services be provided in a synchronous manner?***

- All special education instruction and service provision will be provided in synchronous and asynchronous manner as outlined on the weekly schedule.
- Monday, Tuesday, Thursday and Friday will be identified as synchronous days, while Wednesday will be asynchronous learning and enrichment activities. This weekly schedule was designed in an effort to be conscientious about the amount of time students are exposed to screen time.

## ***When will related services occur during the day?***

- Related services will be provided during the school day much in the manner of the face-to-face environment.
- Related service professionals provide services either as push-in to the classroom or pull-out in a separate environment.
- Services can also be provided on a 1:1 and/or small group basis based on the needs of the student.

*More detailed information coming – members of our special services team will continue to work with parents on a case-by-case basis*

# AAPS REIMAGINE LEARNING PLAN 2020-21

## Connect+ Learning Groups - Network

### K – 12 Students

- Network of small groups of students (6-8) to ensure learning supports continue
- Safe space to access and support virtual participation
- Small groups – when in-person is allowed – in our partner locations such as Community Centers, apartment complex club houses, etc.
- Connect+ groups will also meet virtually
- Social emotional & mental health supports
- All AAPS Learning materials provided, staffing, & training for partners
- Use Head Start, Title I, ESL, Homeless & parent, social worker, & teacher referral
- Also informed by observation of virtual participation

# AAPS REIMAGINE LEARNING PLAN 2020-21

## SUPPORT FOR YOUNGEST STUDENTS

- **Learning through synchronous, online instruction will be paced & well-suited to age-appropriate expectations**  
Including service provision to support IEP
- **Learning materials provided in-home (journals, art supplies, reading materials, etc.)**
- **Youngest students begin the transition to in-person learning first**
- **Social Emotional Learning (SEL) activities & connections daily**



# AAPS REIMAGINE LEARNING PLAN 2020-21

## FULL QUALITY PROGRAM OFFERINGS CONTINUE

### Music, Visual & Performing Arts, *Project Lead the Way*, World Languages

- Continue to provide the high quality arts instruction in the AAPS that our community expects and enjoys virtually, through teacher modeling and providing group & individual feedback
- Students are creating, producing and responding to art, music, and theater asynchronously and synchronously
- Arts teachers are able to virtually meet with and rehearse groups in the performing arts, provide continuing guidance and feedback for visual arts
- Student product, production or presentation can be viewed virtually as well as use of app/software where musicians can rehearse and record music in real time, create a final product, and upload to Schoology

# Supports for Students with Additional Learning Needs

- IEP implementation
- Case managers will connect with students/families to ensure service schedule is in place that meets the needs of families
- Families of English Learners and students with other additional needs of supports and services will also receive contact and support

# Highlights of Work to Meet Needs of Students Individual Education Plan

## ***Will instruction and related services be provided in a synchronous manner?***

- All special education instruction and service provision will be provided in synchronous and asynchronous manner as outlined on the weekly schedule.
- Monday, Tuesday, Thursday and Friday will be identified as synchronous days, while Wednesday will be asynchronous learning and enrichment activities. This weekly schedule was designed in an effort to be conscientious about the amount of time students are exposed to screen time.

## ***When will related services occur during the day?***

- Related services will be provided during the school day much in the manner of the face-to-face environment.
- Related service professionals provide services either as push-in to the classroom or pull-out in a separate environment.
- Services can also be provided on a 1:1 and/or small group basis based on the needs of the student.

*More detailed information coming – members of our special services team will work with parents on a case-by-case basis*

# Follow-up Questions – ‘Front Door’ Email Contacts for all AAPS schools

SCHOOL NAME	EMAIL ADDRESS
A2 STEAM @ Northside	steam@a2schools.org
Abbot	abbot@a2schools.org
Allen	allen@a2schools.org
Angell	angell@a2schools.org
Ann Arbor Open	aaopen@a2schools.org
Bach	bach@a2schools.org
Balas/Administration	a2schools@a2schools.org
Bryant	bryant@a2schools.org
Burns Park	burnspark@a2schools.org
Carpenter	carpenter@a2schools.org
Clague	clague@a2schools.org
Community	community@a2schools.org
Dicken	dicken@a2schools.org
Eberwhite	eberwhite@a2schools.org
Haisley	haisley@a2schools.org
Huron	huron@a2schools.org

SCHOOL NAME	EMAIL ADDRESS
King	mlking@a2schools.org
Lakewood	lakewood@a2schools.org
Lawton	lawton@a2schools.org
Logan	logan@a2schools.org
Mitchell	mitchell@a2schools.org
Pathways	pathways@a2schools.org
Pattnegill	pattengill@a2schools.org
Pioneer	pioneer@a2schools.org
Pittsfield	pittsfield@a2schools.org
Scarlett	scarlett@a2schools.org
Skyline	skyline@a2schools.org
Slauson	slauson@a2schools.org
Tappan	tappan@a2schools.org
Thurston	thurston@a2schools.org
Westerman Preschool	preschool@a2schools.org
Wines	wines@a2schools.org

# CDC GUIDING PRINCIPLES FOR RETURN TO SCHOOL

The more people a student or staff member interacts with, and the longer that interaction, the higher the risk of COVID-19 spread. The risk of COVID-19 spread increases in school settings as follows:

**Lowest Risk:** Students and teachers engage in virtual-only classes, activities, and events.

**More Risk:** Small, in-person classes, activities, and events. Groups of students stay together and with the same teacher throughout/across school days and groups do not mix. Students remain at least 6 feet apart and do not share objects (e.g., hybrid virtual and in-person class structures, or staggered/rotated scheduling to accommodate smaller class sizes).

**Highest Risk:** Full sized, in-person classes, activities, and events. Students are not spaced apart, share classroom materials or supplies, and mix between classes and activities.

<https://www.cdc.gov/coronavirus/2019-ncov/community/schools-childcare/schools.html>

ANN ARBOR PUBLIC SCHOOLS  
LEAD. CARE. INSPIRE.



# Update: AAPS Return to In-Person Learning Plan

# The Return of Our AAPS Children to In-Person Learning

- We believe the *best* place for most students to learn is in in-person learning inside our school buildings
- In-person learning is our first choice for our students when it is safe for groups to gather indoors
- Have been working to prepare our protocols & processes, operations (transportation, food service, etc), and our school buildings for in-person instruction
- In-person learning is our shared goal
- To meet the needs of some students & families, we have a plan in place where any students or families who feel they need may remain in virtual learning for the full school year

## Harvard Global Health Institute

*“The single best policy to support school re-opening prior to the development of a vaccine or treatment is suppression of COVID to near zero case incidence.*

*This can be achieved via universal mask wearing, rigorous social distancing, reduction or elimination of indoor congregant settings, and Testing, Tracing and Supported Isolation.”*

# CDC GUIDING PRINCIPLES FOR RETURN TO SCHOOL

The more people a student or staff member interacts with, and the longer that interaction, the higher the risk of COVID-19 spread. The risk of COVID-19 spread increases in school settings as follows:

**Lowest Risk:** Students and teachers engage in virtual-only classes, activities, and events.


**More Risk:** Small, in-person classes, activities, and events. Groups of students stay together and with the same teacher throughout/across school days and groups do not mix. Students remain at least 6 feet apart and do not share objects (e.g., hybrid virtual and in-person class structures, or staggered/rotated scheduling to accommodate smaller class sizes).

**Highest Risk:** Full sized, in-person classes, activities, and events. Students are not spaced apart, share classroom materials or supplies, and mix between classes and activities.

<https://www.cdc.gov/coronavirus/2019-ncov/community/schools-childcare/schools.html>

## DATA POINTS DASHBOARD

TO INFORM AAPS RETURN TO IN-PERSON SCHOOL METRICS

METRIC	TARGET	TARGET RISK LEVEL DEFINITIONS	DATA SOURCES
# New Daily Cases - Trend	 <p><b>DOWNWARD</b> Trend sustained over 14+ days</p>	<p><b>UP</b> Wrong direction</p> <p><b>FLAT</b> Right/wrong (depends how high the trend is)</p> <p><b>DOWN</b> Right direction</p>	<p><a href="#">Washtenaw County Health Department</a></p> <p><a href="#">MI Safe Start Map</a></p> <p><a href="#">Harvard Global Health Initiative COVID Risk Levels Dashboard</a></p>
New cases per 1,000,000 7 day moving average	 <p><b>&lt;20 cases/1,000,000</b> <b>MEDIUM</b> sustained over 14+ days</p>	<p><b>Cases per Million</b></p> <p>70+ Very High</p> <p>40-70 High</p> <p>20-40 Med-High</p> <p>7-20 Medium</p> <p>&lt;7 Low</p>	<p><a href="#">MI Safe Start Map</a></p>
New cases per 100,000 7 day moving average	 <p><b>1-5 cases/100,000</b> <b>Low end of YELLOW</b> sustained over 14+ days</p>	<p><b>Daily New Cases</b></p> <p>&gt;25 <b>RED</b></p> <p>10-&lt;25 <b>ORANGE</b></p> <p>1-&lt;10 <b>YELLOW</b></p> <p>&lt;1 <b>GREEN</b></p>	<p><a href="#">Harvard Global Health Initiative COVID Risk Levels Dashboard</a></p>
Positivity Rate of Diagnostic Tests	 <p><b>&lt;3%</b> <b>LOW RISK</b> sustained over 14+ days</p>	<p><b>Risk Levels</b></p> <p>20+% Very High</p> <p>10-20% High</p> <p>7-10% Med-High</p> <p>3-7% Medium</p> <p>&lt;3% Low</p>	<p><a href="#">MI Safe Start Map</a></p>
Washtenaw County PK-12 Cases and 0-18 age data	 <p><b>ONGOING MONITORING</b> no specific target</p>	<p><b>No specific risk levels</b> Monitoring for local increases in school-age cases and outbreaks</p>	<p><a href="#">Washtenaw County Health Department</a></p> <p><a href="#">Michigan.gov School-related Outbreak Reporting</a></p>

**DATA POINTS DASHBOARD**  
TO INFORM AAPS RETURN TO IN-PERSON SCHOOL METRICS

Data retrieved 9/16/20 at 9:00 a.m.

METRIC & DATA SOURCE	TARGET	WASHTENAW COUNTY	MI SAFE START REGION 1*	STATE OF MICHIGAN
<b># New Daily Cases - Trend</b> <small>Washtenaw County Health Department MI Safe Start Plan Harvard Global Health Initiative COVID Risk Level Dashboard</small>	 <b>DOWNWARD Trend</b> sustained over 14+ days	 <b>FLAT/UP</b>	 <b>DOWN</b>	 <b>UP</b>
<b>New cases per 1,000,000</b> 7 day moving average <small>MI Safe Start Plan</small>	 <b>&lt;20 cases/1,000,000</b> <b>MEDIUM</b> sustained over 14+ days	<small>Cases per Million</small> <b>40.6</b> <b>HIGH</b>	<small>Cases per Million</small> <b>41.6</b> <b>HIGH</b>	<small>Cases per Million</small> <b>48.4</b> <b>HIGH</b>
<b>New cases per 100,000</b> 7 day moving average <small>Harvard Global Health Initiative COVID Risk Level Dashboard</small>	 <b>1-5 cases/100,000</b> <b>Low end of YELLOW</b> sustained over 14+ days	<small>Daily New Cases</small> <b>6.5</b> <b>YELLOW</b>	<small>Daily New Cases</small> <b>N/A</b>	<small>Daily New Cases</small> <b>8.4</b> <b>YELLOW</b>
<b>Positivity Rate of Diagnostic Tests</b> <small>MI Safe Start Plan</small>	 <b>&lt;3%</b> <b>LOW RISK</b> sustained over 14+ days	<b>2.2%</b> <b>LOW</b>	<b>4.3%</b> <b>MEDIUM</b>	<b>3.4%</b> <b>MEDIUM</b>
<b>Washtenaw County PK-12 Cases and 0-18 age data</b> <small>Washtenaw County Health Department Michigan.gov Michigan.gov Community Reporting</small>	 <b>ONGOING MONITORING</b> no specific target	<small>WCHD Data from 8/29 - 9/11:</small> <b>253 Cases</b> 0-9 yrs = 2% 10-18 yrs = 8% 18-22 yrs = 52%	<b>N/A</b>	<b>N/A</b>

\*Region 1 = Genesee, Lapeer, St. Clair, Livingston, Oakland, Macomb, Washtenaw, Wayne, Detroit City, Monroe. Regions were created by analyzing work and commuting patterns. See MI Safe Start for more information.

# AAPS REIMAGINE LEARNING PLAN 2020-21

SUPPORT FOR YOUNGEST STUDENTS FIRST

~ Transition Plan To Hybrid Learning Plan ~

## Stage 1

*Monitor health protocols,  
rates of infection, & health data*

3 weeks

- **Grades PK, Y5 - K - 1 & 2 Students**
- **Willing students & families who are most in need of in-person learning - for whom virtual learning is the most challenging** (includes Special Education w/ high impact, English Language Learner, & others who have additional needs)

## Stage 2

*Monitor health protocols,  
rates of infection, & health data*

3 weeks

**Grades 3-5 Students begin in-person learning at school**

## Stage 3

*Monitor health protocols,  
rates of infection, & health data*

3 weeks

**Continue transition process to in-person learning with Secondary students, beginning with middle school**

# AAPS Reimagine Learning Plan

For more detailed information, you may view the full Reimagine Learning Plan at:

<https://www.a2schools.org/Page/16241>

# Current Work, Today's Focus & Next Steps

As is true with 95% of the 45,000 PK12 students in Washtenaw County, AAPS has launched 2020-21 in virtual instruction

**AAPS Virtual Opening** : Students and teachers engage in virtual classes, activities, and events.

Fall, 2020 system is developed and equipped for students to be supported in virtual learning

Including food distribution systems, technology, teacher & staff development, learning management system, digital library & academic reading materials, school supplies, performing & visual arts software

During Fall, as infection rates allow, small groups of students will transition to in-person learning and services

# Process for Next Steps

## Daily Review & Monitoring & Weekly Posting of Metrics Status:

- **AAPS team reviews public health metrics daily**
- **AAPS team will review metrics with the Board of Education in a briefing at least once weekly**
- **Posting/update of AAPS data dashboard to a2schools.org website each week**
- **Once overall metrics are achieved to be considered safe to begin transition to in-school learning,**  
**AAPS team will brief the Board, AAPS team, & share information with parents and community**
- **AAPS team will monitor during the intervening 14 days to ensure metrics hold**
- **During this time, AAPS will share a proposed beginning of transition to in-person school date**

# School COVID-19 Metrics in Context

**Evidence is clear: schools have the best chance of a successful in-person reopening when there is very low community spread of COVID-19 over a period of weeks.**

States and school districts largely have been on their own to determine metrics and targets for reopening schools to in-person learning. Three common metrics used for determining community spread are:

- number of new cases,
- number of new cases per 100,000 or per 1,000,000, and
- diagnostic testing positivity rate.

**The MI Safe Schools 2020-2021 Return to School Roadmap does not provide specific community spread targets for schools to use for decision making on remote versus in-person learning.**

**There are many dashboards and other sources of COVID-19 data.**

# AAPS Approach to Metrics

Protecting student and staff health are our number one priority. We also seek to minimize disruption to learning through a cycle of opening and closing that other districts have experienced.

No one data indicator can tell the whole story of the level of community spread, so AAPS is looking at the totality of several metrics that together can be used for decision-making.

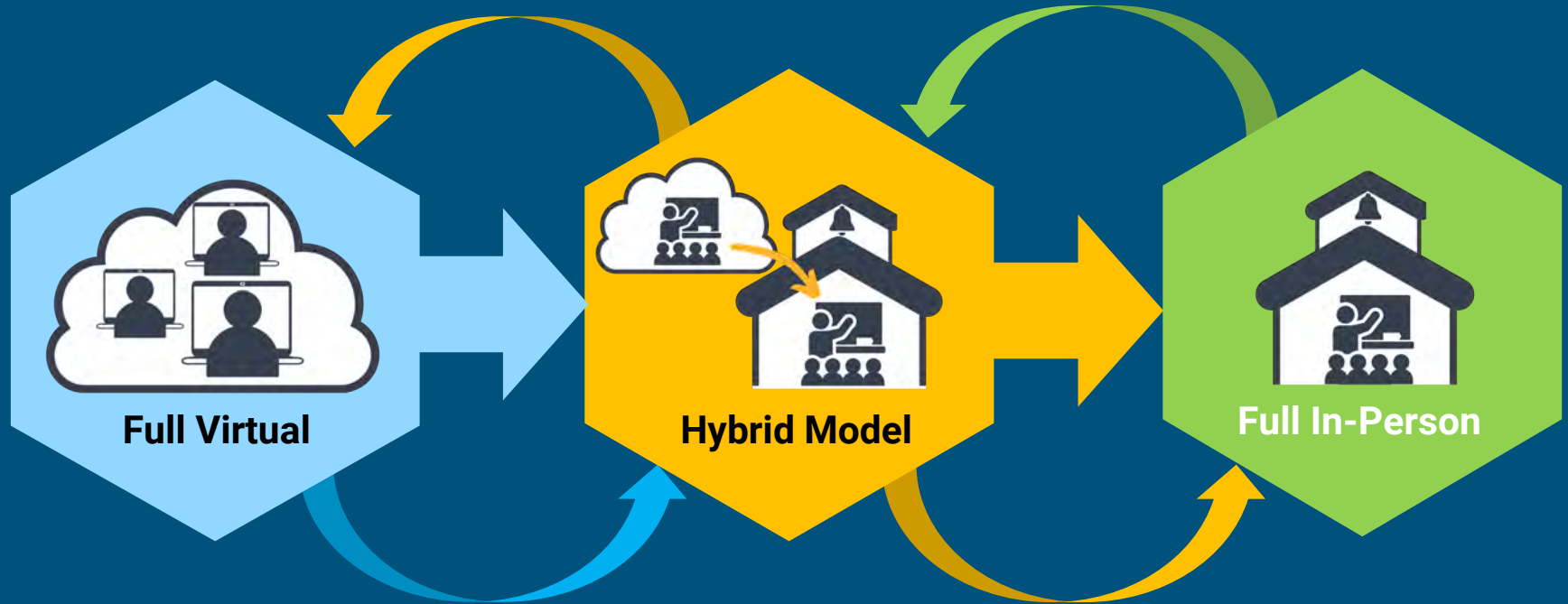
We look at community spread at local (county), regional, and state levels, with emphasis on local and regional data.

Each data source comes with limitations. Monitoring several helps reduce the drawbacks of any one source.

If new information becomes available, we will adjust metrics accordingly.

# AAPS REIMAGINE LEARNING PLAN 2020-21

Progression to Full In-Person Classroom Learning\*



\* Full AAPS Virtual programming is available all year for students & families at all levels.

# Current Work & Next Steps Fall, 2020

---

- Continue to Refine processes & systems for strong virtual learning
- Fall survey for parent feedback to improve
- Continue to vigilantly monitor COVID-19 Infection Rates
- Continue to add & ensure supports for students
  - specialized supports to meet learning needs including tutoring and other learning supports
  - small, socially distanced support groups for students

ANN ARBOR PUBLIC SCHOOLS  
LEAD. CARE. INSPIRE.



# 2020 Annual Fall Update to PTO Council

# ANN ARBOR PUBLIC SCHOOLS FACTS

4th



**LARGEST DISTRICT IN MICHIGAN**

Michigan Department of Education data

2nd



**LARGEST EMPLOYER IN ANN ARBOR**

Crain's Detroit Business and Ann Arbor SPARK Data

To convene a day of in school instruction

**18,500**  
Students

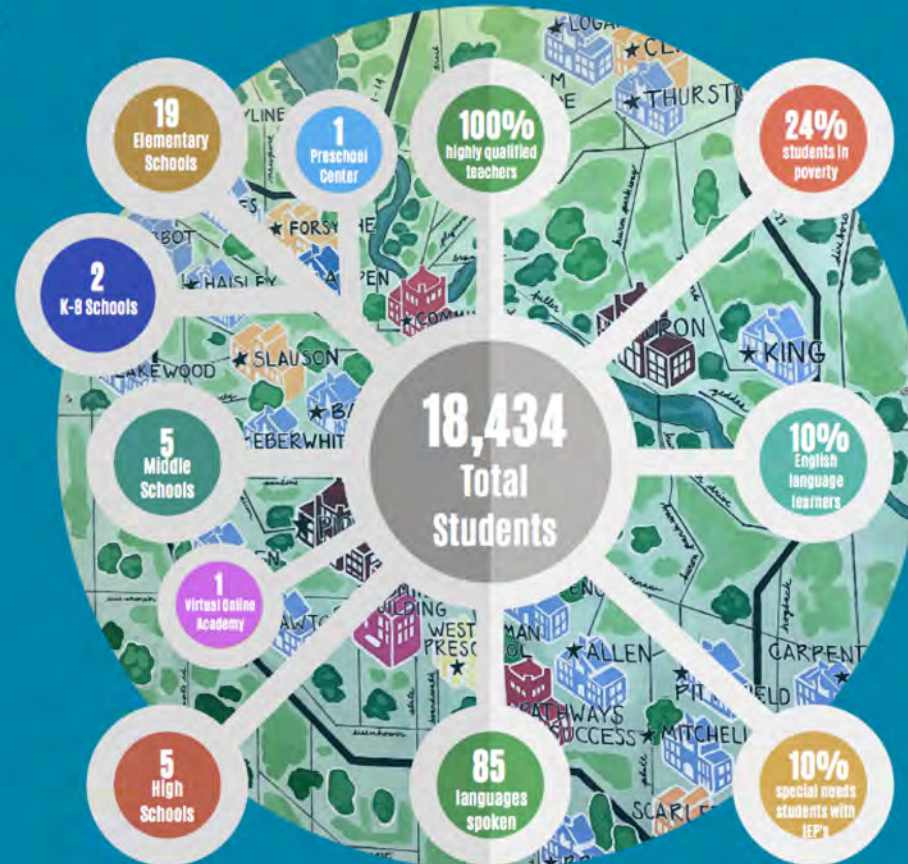
=

**25,000+**  
Individuals

Must leave their homes



# The Ann Arbor Public Schools FAST FACTS



# Strategic Partners

# Thank you!

826Michigan  
American Heart Association  
Ann Arbor Area Community Foundation  
Ann Arbor Center for Independent Living  
Ann Arbor Community Center  
Ann Arbor District Library  
Ann Arbor Police Department  
Ann Arbor SPARK  
Ann Arbor Symphony  
Ann Arbor Ypsilanti Regional Chamber  
Avalon Housing  
Cahoots  
City of Ann Arbor  
Comerica  
Community Action Network

Corner Health Center  
Duo Security (Cisco)  
Family Learning Institute  
Foster Grandparent Program  
Girls Group  
Google Ann Arbor  
Huron River Watershed  
Council  
Literati Book Store  
Michigan Power Rodding  
NETSCOUT  
Neutral Zone  
Nokia/Deepfield  
Ozone House  
Peace Neighborhood Center

PTO Thrift Store  
Rotary Ann Arbor  
RSVP Program  
(Retired and Senior Volunteer Program)  
SafeHouse  
Smithgroup  
Student Advocacy Center  
Thomson Reuters  
TSRL/DDF  
University Musical Society  
U-M America Reads  
U-M Community Engaged Learning in  
ESL Teaching Contexts  
U-M Depression Center  
U-M Ginsberg Center  
UMHS Regional Alliance for Healthy Schools

U-M Mitchell-Scarlett Teaching/Learning Collaborative  
U-M Museum of Natural History  
U-M Project Community  
U-M Project Healthy Schools  
U-M Psychiatric Emergency Services  
U-M Readers and Best  
U-M Ross School of Business  
U-M School of Education  
U-M School of Kinesiology  
U-M Spanish Language Internship Program (SLIP)  
Washtenaw County Community Mental Health  
Washtenaw County Public Health  
WeLoveAnnArbor.com  
Women of Tomorrow  
Zingerman's



# Early Childhood Education



 W. Scott Westerman, Jr.  
**PRESCHOOL AND FAMILY CENTER**



 **ANN ARBOR PRESCHOOL** Tuition & GSRP Preschool

[@ALLEN ELEMENTARY](#) [@THURSTON ELEMENTARY](#) [@MITCHELL ELEMENTARY](#)

Preparing Ann Arbor's Children for Future Success



Ann Arbor Public Schools   
**Young Fives**  
Kindergarten



# The “Arts Advantage” in the Ann Arbor Public Schools

- 100% of AAPS elementary students receive 60 minutes of art and 60 minutes of music weekly.
- 60% of Middle School students are enrolled in visual art classes and 72% in music classes.
- 40% of AAPS High School students are enrolled in visual art and 57% in music classes.
- In 2015 AAPS BOE was awarded the Kennedy Center National School Board Award for school boards that support Arts programming, which came with a \$10,000 check for our Arts programs.
- AAPS performing arts groups regularly receive national and world distinctions



# Environmental Sustainability

The Ann Arbor Public Schools will demonstrate a strong Environmental Sustainability Vision across all AAPS processes, decision-making, in schools, and across the community.



# STEAM & *Project Lead The Way*

AAPS will continue enhancing *Project Lead the Way* and STEAM programming in all P12 classes.



# International Baccalaureate

LEAD. CARE. INSPIRE.   
ANN ARBOR PUBLIC SCHOOLS

## Ann Arbor Public Schools IB Continuum Schools

Mitchell Elementary



April 2019

Scarlett Middle School



IB Continuum Schools & Districts Global Conference

Huron High School



2

**ANN ARBOR PUBLIC SCHOOLS**

**WHAT'S HAPPENING AT YOUR SCHOOL?**  
**YEARS 1-6 INITIATIVES**

**MECHANICAL & ELECTRICAL**



- ✓ Air Conditioning
- ✓ Solar Power
- ✓ LED Lighting

**TEACHING & LEARNING**



- ✓ Media Center Renovations
- ✓ STEAM Lab Collaboration Spaces
- ✓ Outdoor Classrooms

**HEALTH & WELLNESS**



- ✓ Cooking Kitchens
- ✓ Cafeteria Renovations
- ✓ Safe Drinking Water
- ✓ Teaching Gardens

**REPLACEMENT OF SUPPORT INFRASTRUCTURE**



- ✓ 2 New Schools
- ✓ Roofing & Paving
- ✓ Buses
- ✓ High School Athletics & Performing Arts Spaces
- ✓ Middle School Pools
- ✓ Technology
- ✓ Music, Arts & Science Furnishings, Equipment & Instruments

**ENTRANCES**



- ✓ Improved Secure Entry
- ✓ Front Office Renovations
- ✓ Lobby Renovations

# SAFETY & SECURITY

## REMODEL SCHOOL ENTRIES

- ✓ Vestibules will be constructed or reconfigured to require visitors to enter through the main office
- ✓ School offices will be relocated to the front of the building, as needed

## UPGRADE ELECTRONIC ACCESS SYSTEMS

- ✓ All schools will receive upgraded electronic access systems and additional security cameras

## ADDITIONAL SAFETY MEASURES

- ✓ Expand and replace parking lots
- ✓ New exterior lighting
- ✓ Classroom window treatments
- ✓ Replace deteriorating sidewalks and asphalt play areas

# HIGH PERFORMANCE CLASSROOMS

*Transforming the student learning experience through healthy, flexible and engaging learning environments.*

SEE

✓ Daylight and LED Lighting

HEAR

✓ Quality classroom acoustics and low background noise

BREATHE

✓ Fresh air ventilation

FEEL

✓ Teacher-controlled classroom temperature and humidity

✓ Flexible furniture configurations



# ANN ARBOR PUBLIC SCHOOLS FINANCIAL

## Facilities Condition Assessment

### 20-Year Investment Recommendations = \$824M

Upgrades to:

- ✓ Electrical
- ✓ HVAC/Fire protection/plumbing
- ✓ Roofing
- ✓ Interiors, exterior and site

### 20-Year Capital Investment = \$618M

- ✓ New schools & classrooms
- ✓ Refresh furniture, bus fleet and technology
- ✓ Maintain schools in “good/exceptional” condition

Michigan is **one of only 12** states in the country that does not provide state funding for school infrastructure.

Center for Green Schools, 2016

## \$1B over 20 Years

Visit <https://www.a2schools.org/2019bond>

August 24, 2020

New Employee Welcome



# ANN ARBOR PUBLIC SCHOOLS

# ENVIRONMENTAL

# SUSTAINABILITY

- ✓ Prepare schools to adapt to climate change
- ✓ Chart a course for carbon neutrality
- ✓ Utilize interior and exterior finishes which are long-lasting and require minimal maintenance and replacement

