



ANN ARBOR PUBLIC SCHOOLS
LEAD. CARE. INSPIRE.

AAPS COVID-19 Return to School Plan

David A. Comsa, Deputy Superintendent
Human Resources/General Counsel

Shonta Langford, Executive Director
Human Resources & Employee Relations

Presentation to the Board of Education
July 29, 2020

Overview

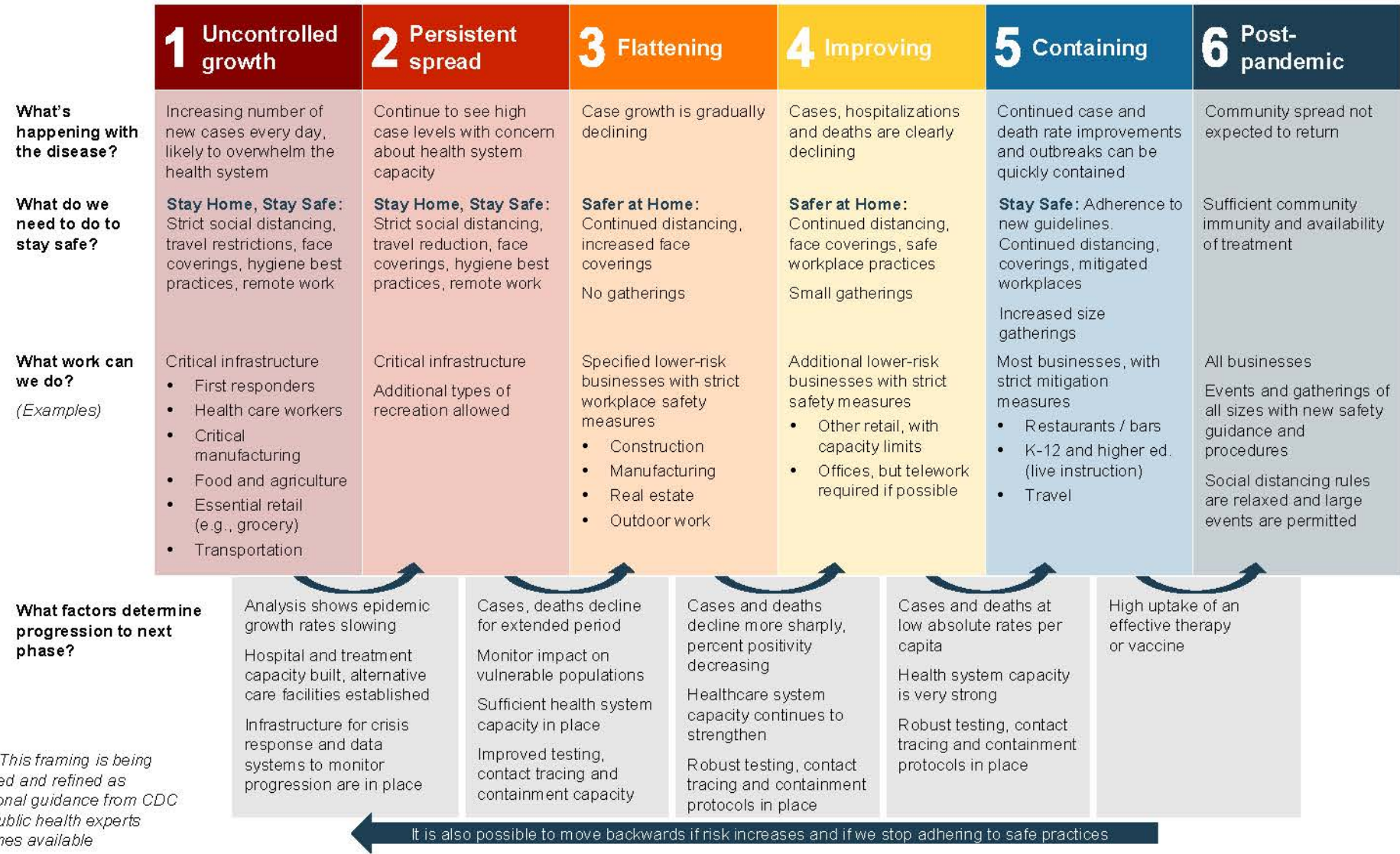
▶ AAPS COVID-19 Return to School Plan

- ▶ Focuses on students' return to school for the 2020-2021 school year.
- ▶ Plan is required by the Governor's Executive Order 2020-142.
- ▶ Incorporates protocols on safety, mental and social emotional well-being, instruction, and operations from the *MI Return to School Roadmap* as well as requirements from EO 2020-142.

AAPS COVID-19 Return to School Plan

- ▶ The procedures AAPS must follow to ensure compliance with EO 2020-142 depend on which phase of the [Michigan Safe Start Plan](#) Region 1 is in (AAPS/Washtenaw County are located in Region 1).
 - ▶ EO 2020-142 and the Roadmap have different required, strongly recommended, and recommended protocols for Phases 1-3, Phase 4, Phase 5, and Phase 6.
 - ▶ Region 1 is currently in Phase 4.
- ▶ EO 2020-142 incorporates the *MI Return to School Roadmap* (the “Roadmap”)
 - ▶ The Roadmap was created by the COVID-19 Task Force on Education and the Return to School Advisory Council - 2 groups of school administrators, teachers, board members, students, local health officials, state government officials, mental health professionals, and other stakeholders.

MI Safe Start Plan



Note: This framing is being updated and refined as additional guidance from CDC and public health experts becomes available

COVID-19 Return to School Plan (cont.)

- ▶ The Roadmap divides each Phase into four main categories:
 - ▶ Safety
 - ▶ Mental and Social Emotional well-being
 - ▶ Instruction
 - ▶ Operations
- ▶ The AAPS plan is similarly organized by phase and then category.
- ▶ The *AAPS Reimagine Learning Plan 2020-21* is cited for additional information in the mental and social emotional well-being and instruction sections of each phase.

Phases 1-3: AAPS Return to School Plan

AAPS will:

- ▶ Suspend in-person instruction and offer alternative modes of instruction;
- ▶ Suspend athletics, after-school activities, inter-school activities, and busing;
- ▶ Close school buildings, except for:
 - ▶ Employees/contractors necessary to conduct minimum basic school operations consistent with return to school plan (including those needed to facilitate alternative instruction)
 - ▶ Food-service workers preparing food for distribution
 - ▶ Licensed child-care providers if District provides child-care during this time

In Phase 3, community spread of the virus is increasing and substantial. There is concern about health system capacity. Testing and tracing efforts may not be sufficient to control the spread of the pandemic.

Phase 4: AAPS Return to School Plan

Although permitted, in-person instruction is not required and is left to the discretion of the local school district.

AAPS will:

- ▶ Require face coverings for students and staff in hallways, restrooms, classrooms, and other common areas, and on transportation, with very limited exceptions.
 - ▶ Students in grades K-5 will not have to wear a face covering in the classroom *if* they remain with their class throughout the school day and do not come into close contact with students in another class.
 - ▶ Students in 6th-12th grades must wear a face covering at all times
- ▶ Require social distancing to the maximum extent feasible.
- ▶ Require self-screening for staff.
- ▶ Consult with the Washtenaw County Health Department regarding self-screening for students.
- ▶ Conduct frequent cleaning and disinfecting of high-touch surfaces.

In Phase 4, the number of new cases and deaths has fallen for a period of time, but overall case levels are still high. Most new outbreaks are quickly identified, traced, and contained due to robust testing infrastructure and rapid contact tracing. Health system capacity can typically handle new outbreaks, but the overall number of infected individuals still indicate the need for distancing.

Phase 5: AAPS Return to School Plan

AAPS will:

- ▶ Provide in-person instruction.
 - ▶ Require face coverings for students and staff in hallways, restrooms, classrooms, and other common areas, and on transportation, with very limited exceptions.
 - ▶ Students in grades K-5 will not have to wear a face covering in the classroom *if* they remain with their class throughout the school day and do not come into close contact with students in another class.
 - ▶ Students in 6th-12th must wear a face covering at all times
- ▶ Require social distancing to the extent feasible.
- ▶ Require self-screening for staff.
- ▶ Consult with the Washtenaw County Health Department regarding self-screening for students.
- ▶ Conduct frequent cleaning and disinfecting of high-touch surfaces.

During Phase 5, new cases and deaths continue to decrease, infection from other members of the community is less common, and new cases continue to fall due to rapid case investigation, contact tracing, and containment strategies

Phase 6: AAPS Return to School Plan

AAPS will:

- ▶ Provide instruction in-person.
- ▶ Continue to support healthy hygiene behaviors and to teach handwashing.
- ▶ Contact and work with local health department if there is a diagnosed case of COVID-19.

Phase 6 is post-pandemic, with few active COVID-19 cases locally and community spread not expected to return.

Plan Approval

- ▶ The *AAPS Return to School Plan* incorporates all required, strongly recommended, and recommended protocols from *MI Return to School Roadmap*, to the extent appropriate and feasible given potential limitations of space, resources, and other conditions.
- ▶ The Plan must be approved by the Board of Education by August 15, 2020.
- ▶ By August 17, 2020, ISDs must collect the plan from all school boards of their constituent districts and transmit them to the Superintendent of Public Instruction and the State Treasurer.

Conclusion

- ▶ Safety procedures from the *AAPS COVID-19 Preparedness and Response Plan and Policy* will govern the responsibilities of employees, contractors, and visitors when on District property.
- ▶ Safety procedures for the *AAPS Return to School Plan* focuses on the students return to school.
- ▶ In addition to this plan being required by the Governor's Executive Order, it further emphasizes the District's top priority: ***the health and safety of all students and staff.***