

2024-25 School and Enrollment Guide

Enroll In: Early Learning | K-12+ | Elementary Magnet Programs | SoWashCo Online



Priority Enrollment Begins:
Monday, Jan. 8-
Friday, Feb. 9, 2024

Enroll Online at
sowashco.org/enroll

SoWashCo
SCHOOLS

AFTON | COTTAGE GROVE | DENMARK | GREY CLOUD ISLAND | NEWPORT | ST. PAUL PARK | WOODBURY

About SoWashCo Schools

South Washington County Schools (SoWashCo Schools) is located southeast of St. Paul. The district includes all or parts of the communities of Afton, Cottage Grove, Denmark, Grey Cloud Island, Newport, St. Paul Park and Woodbury. SoWashCo has 16 elementary schools, four middle schools, three traditional high schools, an alternative high school and an online high school.

Be seen. Be heard. Be bold.

Important Dates

Priority Enrollment and School Information Nights Begin

- Monday, Jan. 8, 2024

High School Evening of Opportunity

for students going into grade 9 for 2024-25 school year

- Monday, Jan. 8, 2024

Priority Enrollment ends, Magnet Program Applications due

- Feb. 9, 2024

Kindergarten Welcome Night

- 5-6 p.m., Thursday, April 25, 2024

Family Welcome Nights/Open House

- August and September

K-5 Assessment Days

- Aug. 29, 2024
- Sept. 3, 2024

First day(s) of school

- Sept. 3, 2024 (grades 6 and 9)
- Sept. 4, 2024 (K-5, 7-8, 10-12)

End of trimester dates

- Nov. 26, 2024
- March 7, 2025
- June 4, 2025

Winter break

- Dec. 23, 2024-Jan. 3, 2025

Spring break

- March 10-14, 2025
- No school March 17, 2025

Last day of school

- June 4, 2025

Full K-12 calendar available on page 37

*Dates and times are subject to change



Table of Contents

School Tour Dates	3-4
How to Enroll	5-6
Transportation Information	7
Programs Before and After School	8-9
• Athletics and Activities	
• Kids Club (School-Aged Child Care)	
Early Childhood Education	10-11
• Early Childhood Screening	
• Preschool	
• Early Childhood Family Education (ECFE)	
• Early Childhood Special Education (ECSE)	
Special Education	12-13
Student Support Services	14-15
• Counseling	
• Cultural Liaisons	
• English Learner	
• Talent Development and Advanced Academics	
Elementary Schools	16-22
Middle Schools	23-25
High Schools	26-29
Great Rivers Adult Education Consortium	30
School Board	31
District Directory	31
Frequently Asked Questions	32-35
• Enrollment (Student Information)	
• Health Services/Immunizations	
• Nutrition	
Family Resources	36
District Family Calendar	37
Educational Benefits	35, 38
Careers with SoWashCo Schools	39

Learn About Early Learning Options, Your Boundary School or Magnet School Options

Schedule a tour at your boundary school online at sowashco.org/enroll. Visitors ages 18 and older touring buildings during school hours will be required to provide a valid ID.

Preschool Information Nights and Tours

To learn about our early learning programs for children from birth to age 4 (ECFE, ECSE and Preschool) see pages 10–11. Pre-registration for preschool information nights and tours is required. To register, please call 651-425-7160 or visit sowashco.org/preschool.

Date	Times	School
Monday, Jan. 22	6–7 p.m.	District Program Center 8400 E Point Douglas Rd S, Cottage Grove
Thursday, Jan. 25	6–7 p.m.	Liberty Ridge Site 11283 Eagle View Blvd., Woodbury

If you are unable to attend the Preschool Information Nights you can register for a preschool tour at Liberty Ridge Site II or the District Program Center on the following dates:

Liberty Ridge Site II

2:30–3:30 p.m.

- Monday, Feb. 26
- Monday, April 15
- Monday, March 25
- Monday, May 20

District Program Center

11 a.m. – 12 p.m.

- Wednesday, Feb. 14
- Wednesday, April 10
- Wednesday, March 13
- Wednesday, May 8

K–5 Elementary Tour Dates and Times

K-5 Elementary Tours • Schedule Online at sowashco.org/enroll			
Date	Time	School	
Tuesdays Jan. 9 Jan. 16 Jan. 23 Jan. 30	8 a.m.	• Crestview Elementary • Newport Elementary	• Red Rock Elementary • Royal Oaks Elementary
	9 a.m.	• Armstrong Elementary • Cottage Grove Elementary • Grey Cloud Elementary • Hillside Elementary	• Middleton Elementary • Pine Hill Elementary • Pullman Elementary • Woodbury Elementary
	9:30 a.m.	• Bailey Elementary • Liberty Ridge Elementary	• Nuevas Fronteras Spanish Immersion • Valley Crossing Elementary

If the day and/or time of the tour does not work with your schedule please contact your boundary school to schedule a date and time to visit.

Magnet Program Information Nights

A short presentation will be made about the magnet programs and school representatives will be available to help answer questions.

Please Note: Students enrolled in the Spanish Immersion program will continue the program in Woodbury Middle School and Woodbury High School.

School	Date	Time
Nuevas Fronteras Spanish Immersion (NFSI)	Tuesday, Jan. 9	5–6 p.m.
Multiage at Valley Crossing Elementary (VCES)	Thursday, Jan. 11	5–6:30 p.m.

Middle School Tour Dates and Times

Available for Cottage Grove, Lake, Olman and Woodbury middle schools.

Middle School Tours • Schedule Online at sowashco.org/enroll	
Date	Tour Start Time
Tuesday, Jan. 9	1 p.m.
Tuesday, Jan. 16	4 p.m.
Tuesday, Jan. 23	9 a.m.

If the day and/or time of the tour does not work with your schedule please contact your boundary school to schedule a date and time to visit.

High School Tour Dates and Times

High School Tours • Schedule Online at sowashco.org/enroll		
School	Date	Tour Start Time
East Ridge High School	Tuesday, Jan. 16	• 9:30 a.m. • 1 p.m.
	Thursday, Jan. 18	• 9:30 a.m. • 1 p.m.
Park High School	Wednesday, Jan. 10	• 9 a.m.
	Wednesday, Jan. 24	• 4 p.m.
	Wednesday, Jan. 31	• 9 a.m.
South Washington Alternative High School	Tuesday, Jan. 16	• 4 p.m.
	Wednesday, Jan. 24	• 9 a.m.
SoWashCo Online	Wednesday, Jan. 3	• 4 p.m. (Virtual)
Woodbury High School	Tuesday, Jan. 16	• 9:30 a.m. • 1 p.m.
	Thursday, Jan. 18	• 9:30 a.m. • 1 p.m.

If the day and/or time of the tour does not work with your schedule please contact your boundary school to schedule a date and time to visit.

High School Evening of Opportunity

All SoWashCo Schools 8th grade students and families are invited to attend an evening of opportunity on Monday, Jan. 8. Families and students can visit their high school to talk with teachers, get registration assistance and learn more about the school they'll attend in the fall of 2024.

Date	School	Tour Start Time
Monday, Jan. 8	East Ridge High School	5:30–7:30 p.m.
	Park High School	5:30–7:30 p.m.
	SoWashCo Online	5:30–7:30 p.m.
	Woodbury High School	5:30–7:30 p.m.

English: If you need an interpreter, please call Nicole Clymer: 651-425-7211

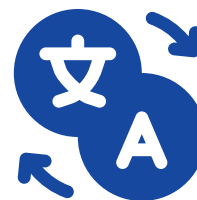
Español: Si necesita un intérprete, llame al Danilo McCarthy: 651-425-7209

中文 (简体): 如果您需要翻译, 请致电 Nicole Clymer: 651-425-7211

Hmoob: yog koj xav tau ib tug neeg txhais lus thov hu Nicole Clymer: 651-425-7211

Tiếng Việt: Nếu bạn cần thông dịch viên, xin gọi Nicole Clymer: 651-425-7211

Soomaaliga: haddii aad u baahan tahay turjumaan fadlan wac Nicole Clymer: 651-425-7211



How to Enroll in SoWashCo Schools (K-12)

Review

- Determine your boundary school.
- Determine if an elementary magnet program or if a non-traditional high school is right for your child. Learn more on pages 20, 22 and 29.

Gather

Gather your child's:

- Proof of Birth (birth certificate or equivalent)
- Address verifications
- Proof of completion of state required health and developmental screening (if not completed through SoWashCo Schools)
 - More information can be found on page 10.

Enroll

- Visit sowashco.org/enroll to complete an online enrollment application form by **Friday, Feb. 9, 2024** for priority enrollment.
 - **Applications for elementary magnet programs must be completed by Friday, Feb. 9, 2024.**
 - Application submissions after the deadline will be added to the waiting list
- Online enrollment is available in five languages. If you need additional translation services please contact Nicole Clymer at 651-425-7211.
 - Si necesita más servicios de traducción, póngase en contacto con Danilo McCarthy en el 651-425-7209.
- If you need a paper form or assistance, please contact Student Information Services at enroll@sowashco.org or 651-425-6328. You can also come to the District Service Center, 7362 E Point Douglas Rd, Cottage Grove, MN 55016, for assistance.

Notification

- Families will be notified of a student's acceptance to a magnet program in March.
- Families with children starting kindergarten in the 2024-25 school year are invited to attend Kindergarten Welcome Night from 5-6 p.m. on Thursday, April 25 at their boundary school.
- Your child's school will provide information for the 2024-25 school year in August.

Who Should Enroll?

A K-12 enrollment application form *is* required if your child will be:

- Entering kindergarten
- New to the district
- Students that do not live in the district, but want to attend SoWashCo Online (grades 9-12).

NOTE: Early childhood screening is required by the State of Minnesota prior to entering preschool or kindergarten. Learn more about our free screening service on page 10.



Enrollment application forms are *not* required for:

- Students who are continuing to the next grade level at SoWashCo Schools.
- Students who are currently attending a SoWashCo School and want to attend SoWashCo Online (grades 9-12).

Admission Priorities

Priority is given to students who:

- Live within the area of their boundary school
- Residents living within SoWashCo Schools boundaries
- Children of SoWashCo Schools employees
- Siblings of current open enrolled students attending SoWashCo Schools
 - Sibling priority does not guarantee acceptance into the district

Other Considerations

- Students living outside of SoWashCo Schools boundaries are admitted to district schools if space allows
 - **Families must complete an open enrollment form** which can be found at sowashco.org/enroll.

Waiting Lists

Waiting lists are created for schools and programs that receive more enrollment applications than space available. Families that apply to a magnet program will remain on the waiting list for one school year. If their student is not selected within the year, families can choose to reapply.

Families applying for a magnet program must also enroll in their boundary school.

Magnet Program Admissions Lottery (for incoming kindergarten students)

- Enrollment for Nuevas Fronteras Spanish Immersion and Valley Crossing Multiage program is determined by a lottery process.
- Families will be notified of the results of the lottery in March.
- Families not selected in the lottery will be placed on a waiting list for the magnet program and enrolled in their boundary school.

The priority enrollment application deadline for magnet programs is Friday, Feb. 9, 2024. Families will be notified of lottery results in March.

Magnet Program Admission for Students Currently in Grades K-4

Families of students currently in grades K-4 that want to apply for one of SoWashCo Schools magnet programs for the 2024-25 school year must fill out an intra-district transfer form.

Students will be admitted if space allows and eligibility requirements are met.

Transportation

Our goal is to provide safe, reliable and efficient transportation to students who live in our school district. We work to ensure students arrive at school on time and ready to learn. We provide transportation to K-12 students **that meet the transportation guidelines**.

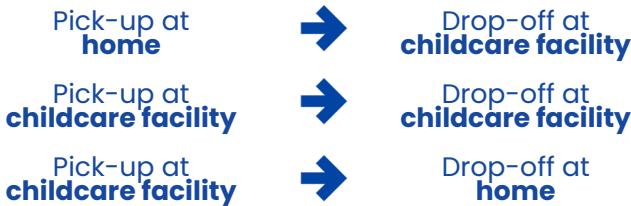
Children who are newly enrolled at SoWashCo Schools for the 2024-25 school year will automatically be offered transportation if they meet the transportation guidelines. In the following years, families will be asked to opt-in to transportation services.

Grade	Transportation Services
K-5	School bus transportation is provided per transportation guidelines to elementary students who live more than one mile from their boundary school.
6-8	School bus transportation is provided per transportation guidelines to middle school students who live more than one and a half miles from their boundary school.
9-12	School bus transportation is provided per transportation guidelines to high school students who live more than two miles from their boundary school.
Magnet Programs and Gateway Programs	School bus transportation is provided per transportation guidelines to students living more than one mile from Nuevas Fronteras Spanish Immersion or Valley Crossing Elementary Schools.

*Information is subject to change
Transportation guidelines can be found at sowashco.org/transportation

Child Care Transportation

Students who will be in grades K-5 are eligible to be considered for an alternate bus stop for childcare purposes. The licensed childcare provider must be located in the same boundary school attendance area where the child is enrolled. **The pick-up and drop-off locations must be the same location each morning and afternoon.**



Please Note: Transportation boundaries and guidelines are subject to change and can be found on our website at sowashco.org/transportation. Open enrolled and intra-district transfer students (students attending a school other than their boundary school) whose parent/guardian has signed a waiver of transportation are not eligible for transportation services regardless of the distance. Learn more at sowashco.org/transportation.

Before and After School Athletics and Activities

Elementary

Sports and activities are managed through Community Education. Intramurals are for students in grades 2–5 and typically meet twice a week for one hour after school. To find activities for your child to participate in please visit commed.sowashco.org/athletics

Middle School

Sports and activities are managed through Community Education. Students in grades 6–8 have an opportunity to participate in a variety of seasonal sports and activities. To find activities for your student to participate in please visit commed.sowashco.org/athletics

Additionally, each Middle School provides opportunities for students to pursue special interests that contribute to their physical, mental and emotional health. For more information about these opportunities, visit your middle school’s website.

High School

SoWashCo Schools provides opportunities for students in grades 9–12 to pursue special interests that contribute to their physical, mental and emotional health. For more information about sports and activities available, visit the athletics and activities page on your high school’s website.

Adapted Athletics

SoWashCo Schools believes every student should have the opportunity to be involved in athletics. The Thunderbolts adapted athletic program is a co-ed team providing opportunities for students in grades 7–12 with various abilities to participate in a team sport and compete against other teams from around the state. Students can participate in:

Soccer (Fall) | Floor Hockey (Winter) | Baseball/Softball (Spring)

Each sport is designed to accommodate all levels of play and ability. To learn more or to sign up, please contact your school’s athletic director.



Middle and High school students must have a current sports physical on record in order to register for any athletic activity. **Sports physicals are valid for three years.**

Forms can be found at sowashco.org/health

Athletic and Activities Contacts

East Ridge High School	Sara Palodichuk Athletic Director	651-425-2348	spalodic@sowashco.org
Park High School	Philip Kuemmel Athletic Director	651-425-3758	pkuemmel@sowashco.org
Woodbury High School	Jodi Loeblein-Lecker Athletic Director	651-425-4421	jloeblei@sowashco.org
Community Education (Elementary and Middle School)	Todd Feustel Youth Athletics Coordinator	651-425-6606	tfeustel@sowashco.org



Before and After School Programs

Kids Club

Kids Club is a fee-based child care program that supports learning and development before and/or after school, on non-school days and during the summer. The program is open to elementary students in grades K-5.

School Year

6:30 a.m.–6 p.m.

- Before and/or after school scheduling.
- Locations are available at all elementary schools.
- Full-time (5 days a week) or part-time (1-4 days a week) scheduling before and/or after school.
- Drop-in attendance option available
- Care on non-school days is available to current Kids Club participants at limited locations. Registration is required for non-school days.

Summer

6:30 a.m.–6 p.m.

- Full-day and half-day schedules.
- Students must have completed their first year of kindergarten to attend.
- Students can attend until the summer following the completion of grade 5.

Kids Club Online Registration

2024–25 School Year Registration Window for New Participants:

9 a.m. Monday, April 22, 2024

*Registration will remain open until all spaces are filled.

Summer 2024 Registration Window:

9 a.m. Thursday, Feb. 1 through 11:59 p.m. on Thursday, Feb. 15, 2024

Contact Us



sowashco.org/kidsclub



651-425-6639



KidsClub@sowashco.org



Follow us on Facebook and Instagram
@SoWashCoCE



Early Learning Programs

SoWashCo Schools Early Learning Programs are offered through Community Education. Our early learning programs offer engaging, enriching and play-based learning experiences for our earliest learners from birth to age 5. View our latest Early Learning Catalogs at commed.sowashco.org/catalogs.

***Times, prices and locations are subject to change for all early learning programs.**

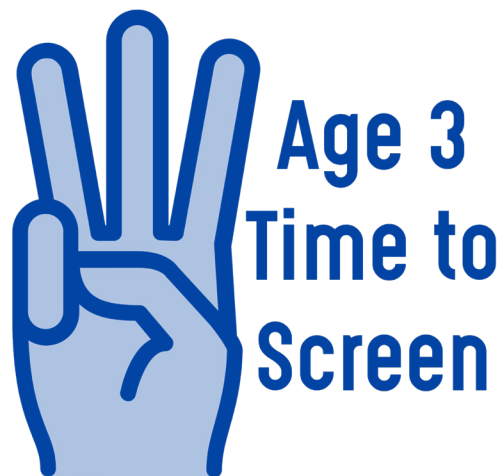
Early Childhood Screening

Early childhood screening is a free and simple check of how your child is growing, developing and learning.

Early Childhood Screening is required by the State of Minnesota for any child entering Kindergarten in a public school and in SoWashCo Schools required before enrollment in 4s Preschool (Sunny Scholars) program.

During screening a trained professional will check:

- Thinking, language and communication skills
- Social and emotional development
- Vision and hearing
- Height and weight
- Large and small muscles
- Immunization history



If your child has not yet been screened and is between the ages of 3 and 5, please visit our website to schedule an appointment at sowashco.org/screening.

Early Childhood Family Education

Early Childhood Family Education (ECFE) is an educational program for families with children from birth to 5 years old. ECFE helps parents support their child's growth and development. Classes are taught by licensed early childhood teachers and licensed parent educators at the District Program Center in Cottage Grove and Liberty Ridge Site II in Woodbury.

To register or learn more about ECFE classes please visit sowashco.org/ecfe.



Early Childhood Special Education

Early Childhood Special Education (ECSE) provides programs and services for young children with disabilities from birth to age 5. Services are provided for children from birth to 2 years old in their home setting. Children ages 3 to 5 are provided with services in a preschool setting designed to meet their educational needs. A referral to early intervention services can be made through the ECSE Intake Coordinator for SoWashCo Schools at 651-425-1182. To learn more, visit sowashco.org/ecse.



Early Learning Programs

Preschool

SoWashCo Schools Preschool program is composed of play-based learning that promotes skill and social-emotional development through activities and classroom interactions.

Preschool programs are located at various elementary school sites as well as our Early Learning Centers. Learn more at sowashco.org/preschool.

3s Preschool (Little Suns)

Little Suns preschool is for children who will be 3-years-old on or before Sept. 1.

4s Preschool (Sunny Scholars)

Sunny Scholars is for children who will be 4-years-old on or before Sept. 1.

Multiage Preschool 3s-4s (Solar Sparks)

Solar Sparks is a multiage class consisting of both 3 and 4-year-olds and offers children the opportunity to make connections with students of different age groups and abilities.

Classes are offered at the following locations:

- Armstrong Elementary
- Bailey Elementary
- Cottage Grove Elementary
- Crestview Elementary
- Hillside Elementary
- Newport Elementary
(Child must live within the Newport Elementary boundary)
- Pullman Elementary
- Royal Oaks Elementary
- Valley Crossing Elementary
- Woodbury Elementary
- Liberty Ridge Site II Early Learning Center
- District Program Center

***Program sites and availability are subject to change.**

Preschool Admission Priorities and Age Eligibility

Students enrolled in Early Childhood Family Education (ECFE) or preschool are not subject to school or district boundaries.

Children who will be 3 or 4-years-old on or before Sept. 1 can register for preschool. **Please note:** new for the 2024-25 school year, preschool programming for children who are age 5 or older on or before Sept. 1 will no longer be available in the SoWashCo Schools Preschool program.

Preschool Registration Fees and Financial Assistance

A one-time, non-refundable registration fee of \$85 is due at the time of enrollment.

Financial assistance is available for families that meet certain state eligibility requirements. Families may be required to provide proof of income. Those who qualify for assistance will also be required to complete a State Pathways Scholarship application. Limited district scholarships are available.

For more information on how to register or apply for financial assistance visit sowashco.org/preschool.



How to Enroll in Preschool

Online preschool registration begins Monday, Jan. 8, 2024 through Friday, Feb. 9, 2024 at sowashco.ce.eleyo.com. Those who fully complete registration by Friday, Feb. 9 will be placed in a lottery for placement based on enrollment choice(s). If space allows, any registrations submitted after Feb. 9 will be accepted on a first-come, first-served basis.

Families that need registration assistance or have questions can contact the Early Learning Office at 651-425-7160.

Special Education

SoWashCo Schools provides a comprehensive program for students with unique learning needs. We offer a continuum of services to address student needs in the areas of academics, social and emotional well-being, behavior, nursing, communication and assistive technology.

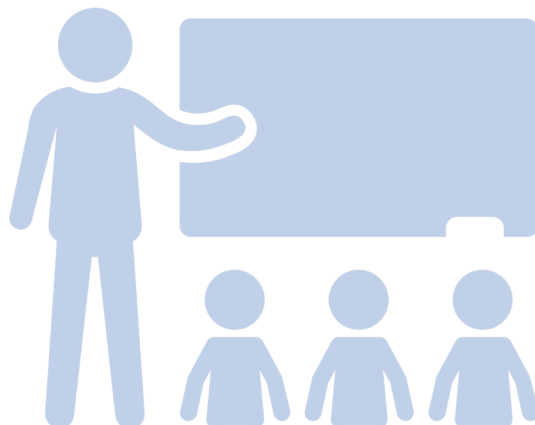
Terms to Know

ABC	Academic Behavior Communication	EBD	Emotional Behavior Disorder
ASD	Autism Spectrum Disorder	ECSE	Early Childhood Special Education
DCD	Developmental Cognitive Disability	Resource	Specialized Supplementary Instruction

Program Availability at Elementary Schools

School	ABC	ASD	DCD	EBD	ECSE	Resource
Armstrong Elementary School		•	•		•	•
Bailey Elementary School	•				•	•
Cottage Grove Elementary School		•	•		•	•
Crestview Elementary School	•	•		•	•	•
Grey Cloud Elementary School		•				•
Hillside Elementary School					•	•
Liberty Ridge Elementary School <small>*ECSE located at LRES Site II</small>		•			•	•
Middleton Elementary School			•			•
Newport Elementary School	•	•	•	•	•	•
Pine Hill Elementary School	•				•	•
Pullman Elementary School	•				•	•
Red Rock Elementary School		•				•
Royal Oaks Elementary School		•				•
Valley Crossing Elementary School	•			•	•	•
Woodbury Elementary School	•		•	•	•	•

***Program sites and availability is subject to change**



Special Education



Program Availability at Middle Schools

School	ABC	ASD	DCD	EBD	Resource
Cottage Grove Middle School	•	•	•	•	•
Lake Middle School	•	•	•		•
Oltman Middle School	•		•	•	•
Woodbury Middle School	•		•		•

*Program sites and availability is subject to change

Program Availability at High Schools

School	ABC	ASD	DCD	EBD	Resource
East Ridge High School	•	•	•	•	•
Park High School	•		•	•	•
Woodbury High School	•		•	•	•

*Program sites and availability is subject to change

Services for Young Adult Learners

Next Step

The Next Step Transition Program offered by SoWashCo Schools provides transition services to students ages 18–22 who have a current Individualized Educational Plan (IEP) and have not yet earned their high school diploma due to continued special education goals. Learn more at nextstep.sowashco.org.

Next Step Pathways

Next Step Pathways serves special education high school students and Next Step students. The vocational assessment lab focuses on building skills in the areas of career development, skills training and lifelong learning activities. Learn more at nextstep.sowashco.org.



Student Support Services

English Language Learner Program

SoWashCo Schools provides English learner (EL) services for students whose home language is not English.

- During the enrollment application process, SoWashCo Schools will gather information about a student and family's language background.
- Families that identify a home language other than English will have their child screened to determine if they qualify for English language services.

Learn more at sowashco.org/englishlearners

SoWashCo Schools ofrece servicios de aprendizaje de Inglés para todos los estudiantes cuya primera lengua no es el Inglés. Para obtener mayor información, por favor visite: sowashco.org/el-es

SoWashCo Schools cung cấp dịch vụ học tiếng Anh cho sinh viên có ngôn ngữ mẹ đẻ không phải là tiếng Anh. Để biết thêm thông tin, hãy truy cập sowashco.org/el-vi

SoWashCo Schools 为家庭语言不是英语的学生提供英语语言学习者服务。欲了解更多信息, 请参访 sowashco.org/el-zh

SoWashCo Schools muab kev pab los ntawm English Language Learner services rau cov tub ntxhais twg tsis hais lus Askiv hauv vaj hauv tsev. Yog xav paub ntxiv, mus saib sowashco.org/el-hm

Iskuullada SoWashCo waxay bixiyaan adeegyada barashada luuqada Ingiriisiga ardayda aan afkooda hooyo ahayn Ingiriiska. Wixii macluumaad oo dheeraad ah, booqo sowashco.org/el-so

Cultural Liaisons

Students and families can connect with Cultural Liaisons for:

- Multicultural events/opportunities
- Learn more about culture
- Leadership opportunities
- Check-ins and connect

Cultural Liaisons are embedded in our middle and high schools. They are available to elementary school students and families upon request. Learn more at sowashco.org/services/DEI

Counseling Services

SoWashCo Schools counselors work with students, families, teachers and administrators to support students with their academic concerns, goals, career and college planning and social-emotional development. Counselors and school psychologists work with students individually or at times, in groups and in the classroom.

Elementary School

Most SoWashCo elementary schools have a psychologist on staff to assist students in need of services. Additionally, cultural liaisons can be available for elementary students and families upon request.

Middle and High Schools

Students and families can contact school counselors for assistance with:

- Academic planning and support
- Home and family
- Family support
- Housing and resources
- Mental health support
- Substance abuse
- Friends and peers
- Schedule and registration questions

Technology

Each student receives their own assigned device (Chromebook or iPad) to use during the school year. Devices and other digital tools provide learners with the opportunities to create, think critically, solve problems, communicate and collaborate.



Talent Development and Advanced Academics

Talent Development and Advanced Academic services are offered at all SoWashCo Schools.

Students must be identified and invited to participate in elementary and middle school cluster classrooms or the Gateway Program at Valley Crossing Elementary School. High school advanced course options are available to all high school students.

Advanced Learner Identification Process

SoWashCo Schools screens and identifies students annually for talent development services, using multiple pieces of data. The district universally screens students for exceptional achievement and the ability to comprehend and gain knowledge in order to address their needs with greater depth and complexity.

- All students in grade 2 are universally screened for services.
- Multiple achievement data points, including the Measures of Academic Progress (MAP) assessment, are reviewed annually along with teacher input to determine students that may need further screening.
- Students in grades 4-7 who were not previously identified but are demonstrating outstanding abilities may be screened for talent development services.
- Students in grades 4-7 may also be referred by a parent or guardian.

Grade 3-8 Enrichment and Extension Services in a Cluster Classroom

- Advanced learners with similar strengths are placed together in a classroom, with a teacher who has received additional training in meeting the needs of advanced learners.
- This classroom includes a broad range of student achievement levels and offers enrichment and extension activities that are targeted to each student's strength.
- Students with similar advanced characteristics are able to learn with a group of similar academic peers.

Learn more at sowashco.org/academics/talent-development

Grade 3-5 Gateway Program

- Located at Valley Crossing Elementary School.
- Students are serviced in an all-advanced learner-peer environment. This program is often well-suited for students who have the potential to thrive in a different learning environment than their current boundary school.
- Teachers use curriculum with increased depth, complexity and pacing.
- Students are immersed in an intellectually challenging community that encourages academic risk-taking.

Learn more at vces.sowashco.org/academics/gateway-program

High School

Each high school offers choice-based programs of study that allow for students to access challenging coursework such as:

- Advanced Placement (AP) courses
- International Baccalaureate Program (IB) at Park High School
- Project Lead the Way at East Ridge and Woodbury high schools
- College in Schools (CIS) at East Ridge and Woodbury high schools
- Post Secondary Enrollment Options (PSEO) at Park, East Ridge and Woodbury high schools

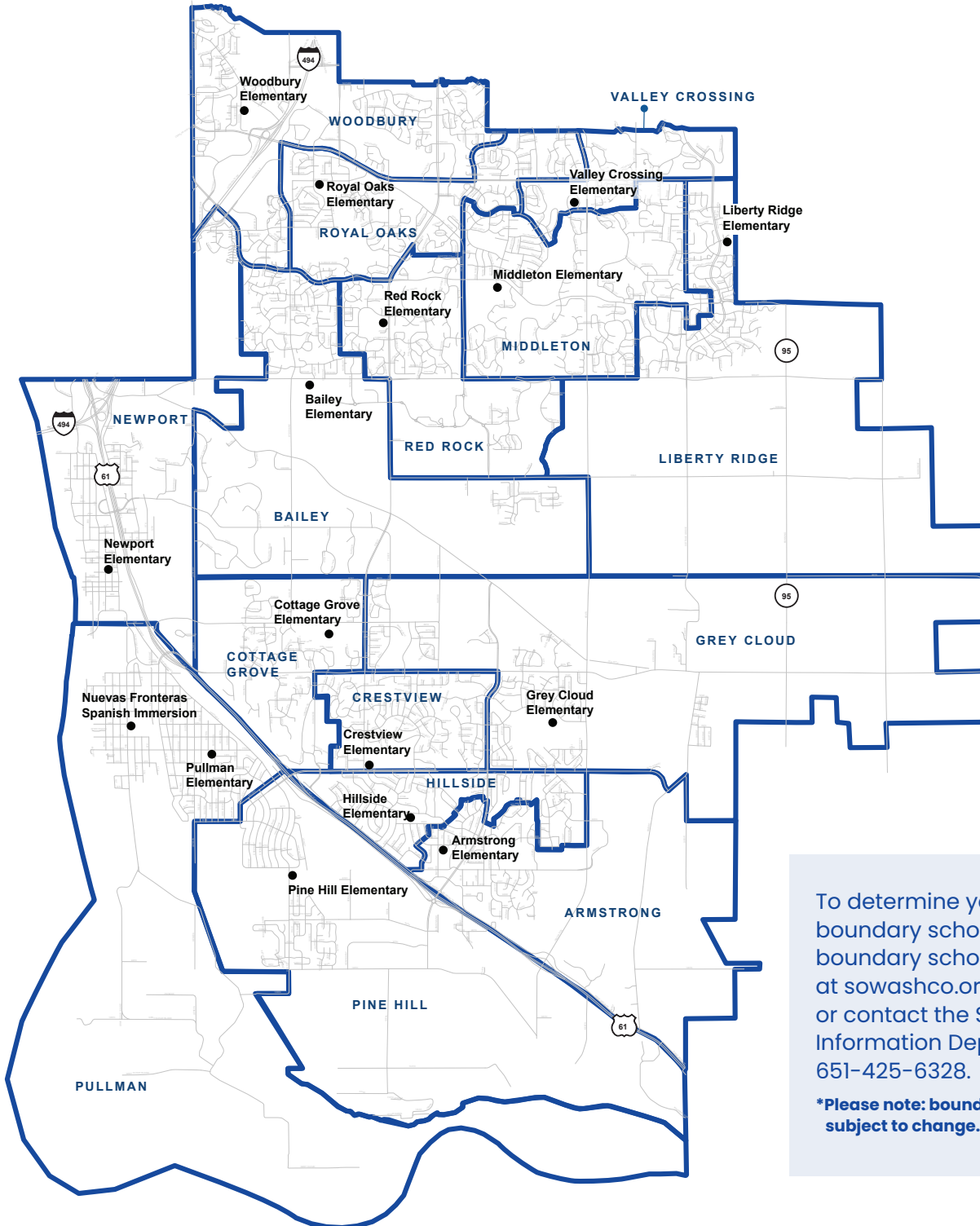
Elementary Schools



SoWashCo Schools has 16 elementary schools serving students in preschool through grade 5. During their first years in school, students will meet new friends, learn routines, develop problem-solving skills and build a foundation for success in future learning.

Get involved with your child's PTA/PTO!

Visit the "Get Involved" tab on your school's website to learn how to support the PTA/PTO.



To determine your student's boundary school, use our boundary school calculator at sowashco.org/enroll or contact the Student Information Department at 651-425-6328.

***Please note: boundaries are subject to change.**

Elementary Schools



Armstrong Elementary School (Preschool-5)

8855 Inwood Ave. S. Cottage Grove, MN 55016 | aes.sowashco.org | 651-425-4100

- In third through fifth grades, students are taught Advancement Via Individual Determination (AVID) strategies to help them stay organized and gain study skills to be successful in school.
- Students can stay involved with their classmates through our student council, yearbook club and as student ambassadors.
- Students are offered opportunities in choir and competitive sports activities throughout the school year.
- Teachers personalize learning for each student through relationships and technology (iPads K-2, Chromebooks 3-5).
- There is an active Parent Teacher Organization (PTO) and several community-building events throughout the year. Visit aes.sowashco.org/get-involved.

Preschool	Start Time / End Time	Kids Club
•	8:40 a.m.-3:10 p.m.	•

Bailey Elementary School (Preschool-5)

4125 Woodlane Dr. Woodbury, MN 55129 | bes.sowashco.org | 651-425-4800

- Bailey Elementary students are taught to always submit their best work through setting and achieving academic goals.
- Updated facilities include classroom microphones, flexible seating options in the classroom, an outdoor learning space, an additional playground for younger students and adaptive swings that can be used by students of all abilities.
- Students needing additional support with literacy can participate in Reading Corp, our literacy intervention group led by Bailey Elementary Reading Specialists.
- Students can connect with their classmates through choir, Passport Club, student council and as student ambassadors.
- Students are encouraged to learn outside of the classroom through a yearly STEM (Science, Technology, Engineering and Math) fair to showcase independent student projects, a World Cultures Week and a Battle of the Books event.
- Families can get involved with an active Parent Teacher Association (PTA). Visit bes.sowashco.org/get-involved.

Preschool	Start Time / End Time	Kids Club
•	9:20 a.m.-3:50 p.m.	•

Cottage Grove Elementary School (Preschool-5)

7447 65th Street S. Cottage Grove, MN 55016 | cges.sowashco.org | 651-425-5800

- A fully inclusive and accessible playground provides every student with the opportunity to play together.
- Each month, a student in every classroom is recognized for being a great school community member with their photos displayed in the commons area.
- Students can engage with their peers outside of the classroom in student council, student ambassadors and Boys and Books Club.
- Staff, students and parents are committed to collaborating to ensure each person feels valued, respected and has a sense of belonging.
- Cottage Grove Elementary offers special education center-based programs for children with autism spectrum disorder (ASD) and developmental cognitive disabilities (DCD).
- There is an active Parent Teacher Organization (PTO) that helps host multiple community-building events throughout each school year. Visit cges.sowashco.org/get-involved.

Preschool	Start Time / End Time	Kids Club
•	8:40 a.m.-3:10 p.m.	•

Elementary Schools



Crestview Elementary School (Preschool-5)

7830 80th Street S. Cottage Grove, MN 55016 | ces.sowashco.org | 651-425-3800

- Classrooms are equipped with technology to help meet the unique needs of each student through individual devices, smartboards, classroom microphones and devices for students who are hard of hearing.
- Students are offered opportunities in choir and competitive activities such as word master, geography bee and math league.
- Students learn through a variety of unique programs such as mindful movement, be the boss of your stress and the forest restoration project.
- Support is offered outside of school hours through extended day learning for a portion of the year, tutoring and summer home visits when available.
- Each month students host Cardinal Jam, an all-school meeting to recognize students who demonstrate growth and leadership.
- The Crestview Elementary Parent Teacher Organization (PTA) assists with a variety of events throughout the year including family nights, school dances, discovery day and more. Visit ces.sowashco.org/get-involved.

Preschool	Start Time / End Time	Kids Club
•	7:55 a.m.-2:25 p.m.	•

Grey Cloud Elementary School (K-5)

9525 Indian Blvd. S. Cottage Grove, MN 55016 | gces.sowashco.org | 651-425-4200

- Students can connect with their classmates through choir, cribbage and chess club, theatre group, student council, student ambassadors and by being a crossing guard.
- Students participate in a monthly schoolwide theme to encourage learning and emotional growth including unity month, kindness month, grit and goals month, reading month and more. We end the year with the "Celebration of Learning" event.
- Grey Cloud Elementary has an outdoor classroom and participates in the prairie restoration project with South Washington Watershed District.
- Grey Cloud shares a campus with Cottage Grove Middle School and connects to Kingston Park by a variety of trails.
- There is a center-based program for students with high communication and sensory needs.
- Families can join the active Parent Teacher Association (PTA) to help organize community events for Grey Cloud Elementary. Visit gces.sowashco.org/get-involved.

Preschool	Start Time / End Time	Kids Club
Not Available	8:40 a.m.-3:10 p.m.	•



Elementary Schools



Hillside Elementary School (Preschool-5)

8177 Hillside Trail S. Cottage Grove, MN 55016 | hes.sowashco.org | 651-425-4000

- Students enjoy new playground features, a large outdoor campus and individualized technology in the classroom to meet unique educational needs.
- Hillside uses the HAWKS system which centers around being helpful, having a positive attitude, working hard, kindness and being safe.
- An Academic Success Coach is available for students in grades 3-5 to help support their academic needs.
- Students have the opportunity to bond with other students outside of the classroom in choir, youth advisory council, student council and student ambassadors.
- There is a welcoming Parent Teacher Organization (PTO) that helps host multiple community-building events throughout each school year. Visit hes.sowashco.org/get-involved.

Preschool	Start Time / End Time	Kids Club
•	8:40 a.m.-3:10 p.m.	•

Liberty Ridge Elementary School (Preschool-5)

11395 Eagle View Blvd. Woodbury, MN 55129 | lres.sowashco.org | 651-425-5900

- Updated indoor classroom facilities and outdoor playground equipment allow students to grow academically, socially and physically.
- Teachers provide personalized learning opportunities in the classroom through technology and face-to-face individual support.
- Students can connect with classmates in a variety of activities outside of the classroom including choir, student council, math masters, battle of the books and Percussion Club.
- Liberty Ridge hosts a variety of events for students and families, including reading month, a fun run, family fall picnic and more.
- Classrooms are located in grade-level pods throughout the school, where classes can collaborate, connect and learn together.
- Families can join a supportive Parent Teacher Association (PTA) which regularly coordinates, volunteers and plans events to encourage a strong school community. Visit lres.sowashco.org/get-involved.

Preschool	Start Time / End Time	Kids Club
•	9:20 a.m.-3:50 p.m.	•



Elementary Schools



Middleton Elementary School (K-5)

9105 Lake Rd. Woodbury, MN 55125 | mes.sowashco.org | 651-425-4900

- Middleton Elementary has a new GaGa ball ring and little free library available to students.
- Classrooms feature a microphone and flexible seating options to meet the variety of needs of students. Middleton also has an outdoor classroom and the Mustang Meadow calming collaboration space.
- Students are encouraged to learn outside of the classroom through school events like Middleton World Cultures Week, art shows and science fairs.
- Students can engage in extracurricular activities such as choir, student council, student ambassadors, youth advisory council, after-school math opportunities and an after-school visiting theater partnership.
- There is a welcoming Parent Teacher Organization (PTO) that plans fun, annual events including the Middleton fall festival. Visit mes.sowashco.org/get-involved.

Preschool	Start Time / End Time	Kids Club
Not Available	8:40 a.m.-3:10 p.m.	•

Newport Elementary School (Preschool-5)

651 6th Ave. Newport, MN 55055 | nes.sowashco.org | 651-425-4300

- Newport is a Title I school that provides additional educational opportunities and resources to support student growth in grades K-2.
- Students can connect with classmates through choir, student council, student ambassadors and youth advisory council.
- Monthly schoolwide meetings are held to celebrate successes and encourage learning and emotional development.
- Families can join an active Parent Teacher Organization (PTO) that supports students, staff and the school community. Visit nes.sowashco.org/get-involved.

Preschool	Start Time / End Time	Kids Club
•	7:55 a.m.-2:25 p.m.	•

Nuevas Fronteras Spanish Immersion (K-5)

1020 Third Street St. Paul Park, MN 55071 | nfsi.sowashco.org | 651-425-3100

- Nuevas Fronteras Spanish Immersion (NFSI) is a districtwide magnet school for K-5 Spanish immersion where students are fully immersed in the Spanish language with staff representing five Spanish speaking countries and helping to promote Latino culture. Learn more about how to apply on page 6.
- NFSI has a newly redesigned playground, football and baseball fields and a running track for outdoor learning experiences.
- There are flexible learning spaces to encourage collaboration and a comprehensive media center to support learning in Spanish and English.
- Students can connect outside of the classroom through student council, student advisory council, district ambassadors, Girls on the Run, Chess Club, Color Me Beautiful/Boys to Young Men and choir.
- There is a supportive Parent Teacher Student Organization (PTSO) that plans community-building events throughout the year. Visit nfsi.sowashco.org/get-involved.

Spanish Immersion Pathway: Nuevas Fronteras > Woodbury Middle > Woodbury High School

Preschool	Start Time / End Time	Kids Club
Not Available	9:20 a.m.-3:50 p.m.	•

Elementary Schools



Pine Hill Elementary School (K-5)

9015 Hadley Ave. S. Cottage Grove, MN 55016 | phes.sowashco.org | 651-425-3900

- There are a variety of services offered to support student growth including reading and math specialists, academic success coaches and talent development programs.
- Pine Hill students, staff and families all have opportunities to learn and practice conscious discipline, which builds a foundation of safety and increases students' abilities to problem solve and learn at high levels.
- Students can connect with classmates in activities outside of the classroom including choir, music club, Color Me Beautiful, chess club, student council, student advisory council and youth advisory council.
- Schoolwide meetings are held throughout the year to celebrate students and focus on a development skill.
- Teachers personalize learning for each student through relationships and technology (iPads K-2, Chromebooks 3-5).
- Pine Hill has an active Parent Teacher Association (PTA) that supports field trips, family nights and more throughout the year. Visit phes.sowashco.org/get-involved.

Preschool	Start Time / End Time	Kids Club
Not Available	8:40 a.m.-3:10 p.m.	•

Pullman Elementary School (Preschool-5)

1260 Selby Ave. St. Paul Park, MN 55071 | pes.sowashco.org | 651-425-3600

- Pullman is a Title I school that serves students in grades K-2 during the day with extra academic support in literacy and math. Before and after school tutoring is also available to students needing extra support.
- Students are encouraged to learn outside of the classroom through a yearly global arts festival that showcases each student's cultural heritage and a fall family dinner night that is open to the whole community.
- Students are provided with technology to help meet their unique needs through individual devices (iPads K-2, Chromebooks 3-5).
- Teachers provide personalized learning opportunities in the classroom through technology and face-to-face individual support.
- Students can connect with classmates through choir, Lego Club, AVID Club, student council, student ambassadors and youth advisory council.
- There is a welcoming Parent Teacher Organization (PTO) that meets monthly and plans events for the school community. Visit pes.sowashco.org/get-involved.

Preschool	Start Time / End Time	Kids Club
•	8:40 a.m.-3:10 p.m.	•

Red Rock Elementary School (K-5)

3311 Commonwealth Ave. Woodbury, MN 55125 | rres.sowashco.org | 651-425-5600

- Every classroom is equipped with flexible seating and audio enhancement technology that projects the teacher's voice.
- Students who need additional support with reading can participate in the reading intervention program.
- Red Rock hosts an annual World Culture Week where students teach each other about their culture and heritage.
- Students can connect with classmates in a variety of activities outside of the classroom including choir, Kindness Club, student council, student advisory council, and the district advisory council.
- Families can join an active Parent Teacher Organization (PTO) to help plan community-building events throughout the year. Visit rres.sowashco.org/get-involved.

Preschool	Start Time / End Time	Kids Club
Not Available	7:55 a.m.-2:25 p.m.	•

Elementary Schools



Royal Oaks Elementary School (Preschool-5)

7335 Steepleview Rd. Woodbury, MN 55125 | roes.sowashco.org | 651-425-4700

- Updated facilities at Royal Oaks include smartboards, a zen den and a motor room for students to focus on mindfulness and self-regulation (the ability to manage their energy, emotions, thoughts and behaviors).
- Students can connect outside of the classroom through student council, student advisory council, district ambassadors, safety patrol, Girls On The Run and choir.
- Students vote on a theme for schoolwide celebrations that are held each month.
- Royal Oaks has a welcoming Parent Teacher Association (PTA) that supports the school community. Visit roes.sowashco.org/get-involved.

Preschool	Start Time / End Time	Kids Club
•	7:55 a.m.-2:25 p.m.	•

Valley Crossing Elementary School (Preschool-5)

9900 Park Crossing, Woodbury, MN 55125 | vces.sowashco.org | 651-425-7500

- Valley Crossing is a district magnet school for multiage classrooms that allows students to develop relationships with the same team of teachers and classmates over a two-year period. Learn more about how to apply on page 6.
- Older students “Buddy Up” with a younger student to collaborate and support one another throughout the school year.
- Students can connect with classmates in activities outside of the classroom including choir, Valley News Network, battle of the books, spelling bee, student council, student advisory council and youth advisory council.
- Classrooms are located in neighborhood pods throughout the school, where classes can collaborate, connect and learn together.
- Valley Crossing hosts the Gateway program, which serves students in an all-gifted peer environment using curriculum with increased depth, complexity and pacing as the primary lens for designing instruction. Learn more about the program and the identification process on page 15.
- Families can join an active Parent Teacher Association (PTA) that coordinates community-building events throughout the year. Visit vces.sowashco.org/get-involved.

Preschool	Start Time / End Time	Kids Club
•	9:15 a.m.-3:45 p.m.	•

Woodbury Elementary School (Preschool-5)

1251 School Dr. Woodbury, MN 55125 | wes.sowashco.org | 651-425-4600

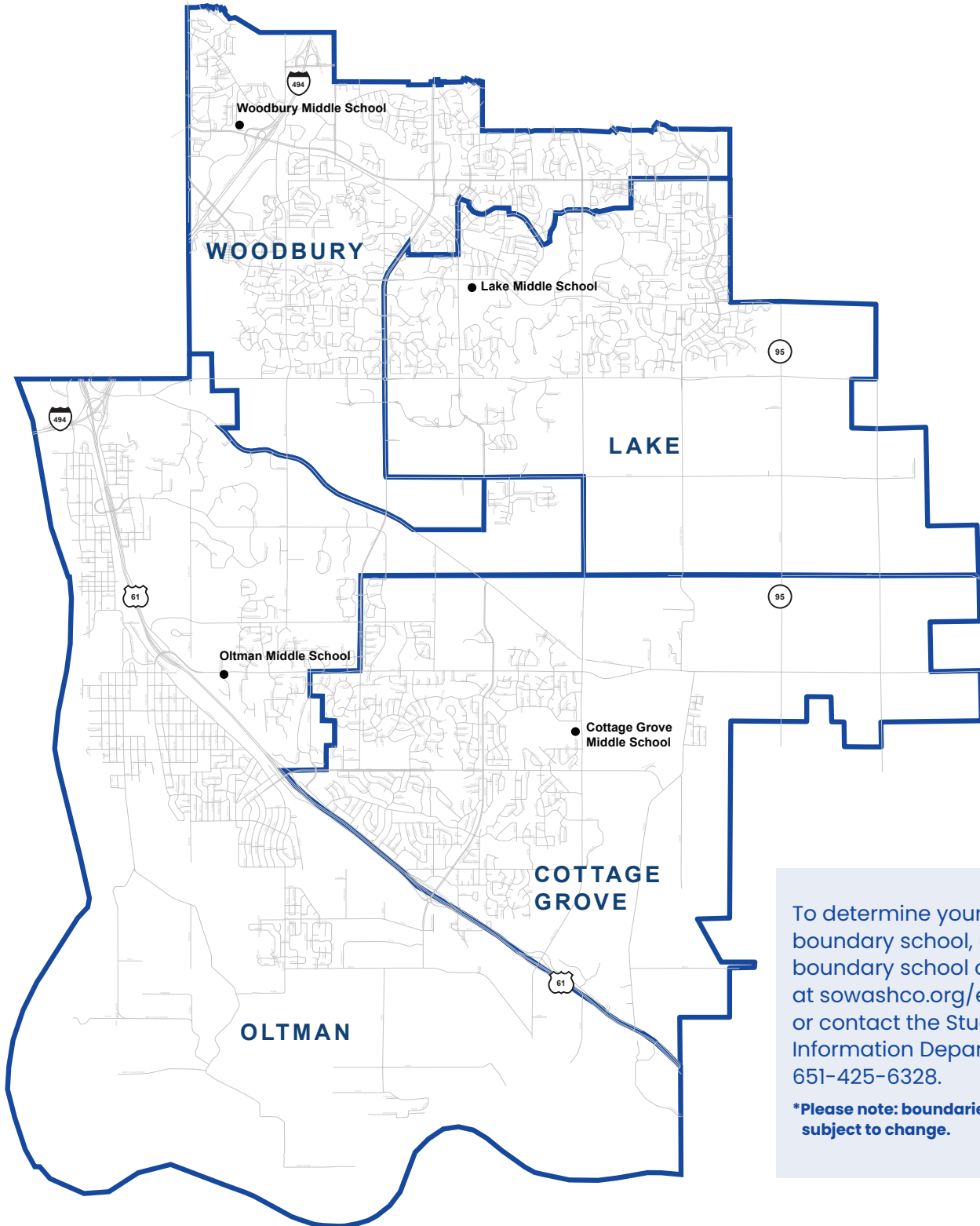
- Woodbury Elementary provides students with hands-on learning opportunities including learning how to code applications and robots.
- Updated facilities include a maker space for students to practice artistic creativity and problem-solving during the school day.
- Students can socialize through school programs including choir, math masters, student council and student ambassadors.
- There is a welcoming Parent Teacher Organization (PTO) that provides support for the school community. Visit wes.sowashco.org/get-involved.

Preschool	Start Time / End Time	Kids Club
•	8:40 a.m.-3:10 p.m.	•

Middle Schools



SoWashCo Schools has four middle schools serving students in grades 6–8. Middle School students will build on the educational foundations of elementary school to help prepare them for high school and beyond. Students will learn independence, time management, problem-solving, critical thinking and decision-making skills.



To determine your student's boundary school, use our boundary school calculator at sowashco.org/enroll or contact the Student Information Department at 651-425-6328.

***Please note: boundaries are subject to change.**

Middle Schools



Cottage Grove Middle School (6-8)

9775 Indian Blvd. S. Cottage Grove, MN 55016 | cgms.sowashco.org | 651-425-6800

- Once a month, Cottage Grove Middle School (CGMS) recognizes students who have been nominated for best representing our four core values of respect, integrity, commitment and compassion.
- CGMS has a technology lab for STEM classes for students to have hands-on experiences and science lab stations allowing for more interactive learning.
- Students who need additional support can participate in our after-school academics program.
- Students in eighth grade can take Spanish with the opportunity to earn high school credits.
- CGMS has 15 clubs and activities including: One-Act Play, fall and spring musical, speech team, math team, student council, Yearbook Club, Environmental Club, Gay-Straight Alliance (GSA) Club, Upstanders (Anti-Bullying Group), WEB (Where Everyone Belongs) and Running Club.
- Our counseling team creates weekly social-emotional lessons designed to help students develop skills and build confidence.

Start Time / End Time	Indigenous/World Languages
7:50 a.m.-2:26 p.m.	Spanish (Grade 8 Only)

Lake Middle School (6-8)

3133 Pioneer Dr. Woodbury, MN 55125 | lms.sowashco.org | 651-425-6400

- Lake Middle School (LMS) earned the honor of being a Blue Ribbon school in 2022 from the U.S. Department of Education for educational excellence and progress in closing the achievement gap.
- LMS has three full-size gymnasiums, a swimming pool, outdoor classroom and every indoor classroom is equipped with wireless microphones to help teachers amplify learning for students.
- Spanish is offered as an elective class for students in eighth grade.
- Students have an opportunity to participate in after-school theater, musical ensembles, debate, robotics and a variety of extra-curricular activities and clubs.
- Student Advisory classes support Social and Emotional Learning (SEL) through many activities and lessons to support students in developing and maintaining skills and strategies for success in their thinking, learning and communicating with others.
- Student achievement is recognized in many formal and informal ways throughout each school year that encourages and affirms students as Lake Leaders of Excellence in the areas of Leadership, Academics, Kindness and Excellence.

Start Time / End Time	Indigenous/World Languages
7:50 a.m.-2:26 p.m.	Spanish (Grade 8 Only)



Middle Schools



Oltman Middle School (6-8)

6625 Goodview Ave. S. Cottage Grove, MN 55016 | oms.sowashco.org | 651-425-3500

- Oltman Middle School (OMS) offers collaborative learning spaces with comfortable seating, technology bars, mobile classroom furniture and enhanced security systems.
- Students can register for advanced math and Spanish courses that can count toward high school credit.
- After school, students can participate in theater, Jazz Band, Chamber Orchestra, Choral Ensemble, Art Club, Anime Club, Movie Critics Club, Leadership Groups, Newspaper Club, Chess Club and Student Council.
- OMS has a state-of-the-art, fully accessible pool and a diving well.
- OMS is recognized nationally as an AVID (Advancement Via Individual Determination) National Demonstration School and AVID Schoolwide Site of Distinction. We also have two staff members who are national staff developers for AVID and help train teachers across the country.
- OMS has an active parent-teacher organization (PTO) that helps support enrichment programs and activities, field trips, and student recognition programs. Visit oms.sowashco.org/get-involved.

Start Time / End Time	Indigenous/World Languages
7:50 a.m.-2:26 p.m.	Spanish (Grade 8 Only)

Woodbury Middle School (6-8)

1425 School Dr. Woodbury, MN 55125 | wms.sowashco.org | 651-425-4500

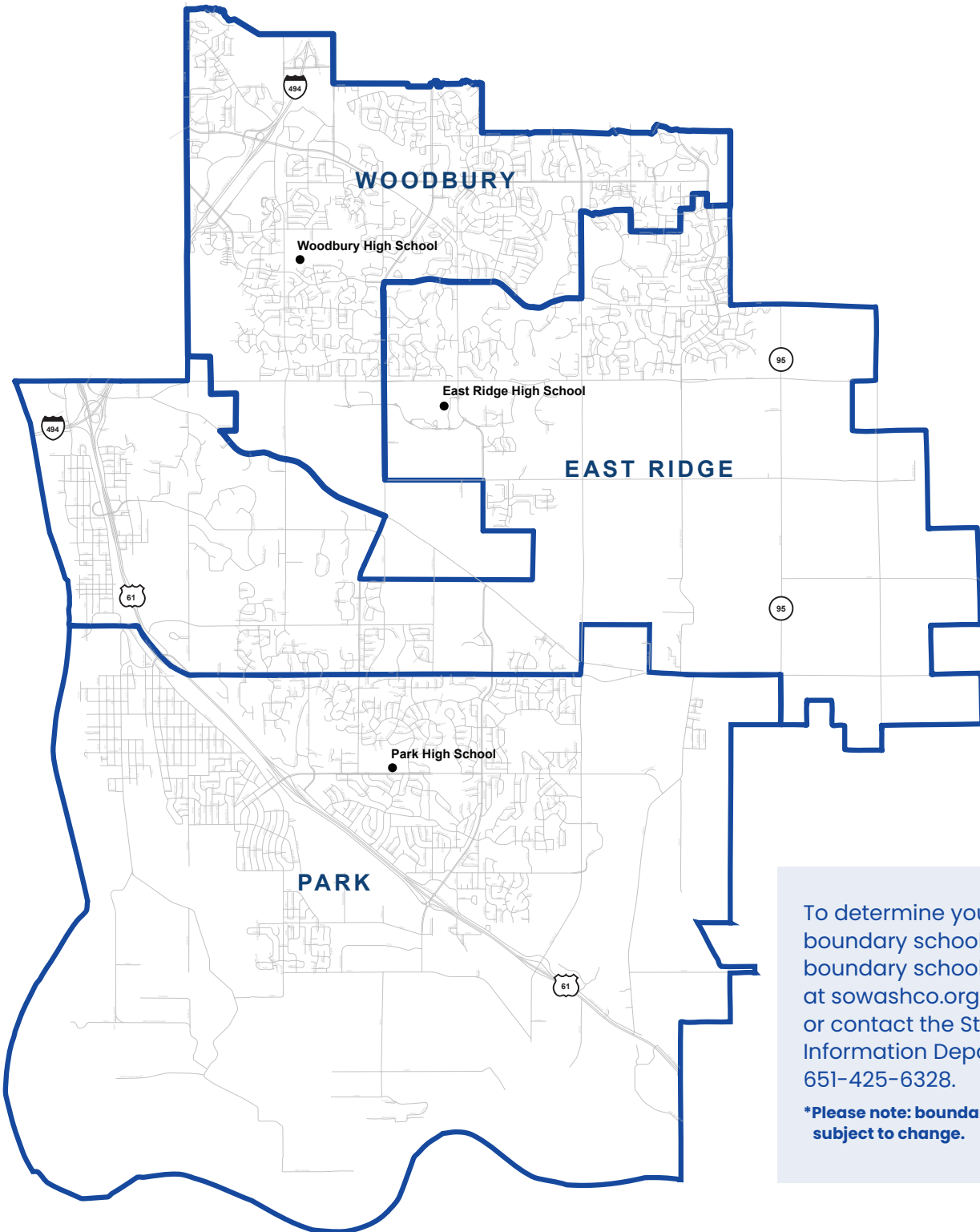
- Woodbury Middle School (WMS) includes classroom microphones, flexible learning spaces, movable furniture and sliding glass doors to allow for collaborative learning.
- WMS is recognized nationally as an AVID (Advancement Via Individual Determination) National Demonstration School and AVID Schoolwide Site of Distinction. We also have two staff members who are national staff developers for AVID and help train teachers across the country.
- Advisory is every morning where students learn about character education along with Social Emotional Learning.
- The state-of-the-art STEM (science, technology, engineering and math) Lab is equipped with 3D printers, a vinyl cutter, heat press and embroidery machines.
- WMS is designated as the Spanish immersion pathway for SoWashCo Schools.
- The counseling department helps coordinate peer homework helpers and the Check and Connect Program which supports student learning and collaboration.
- Woodbury Middle School offers 20 clubs and activities including theater, Wildcat News Crew, Student Council, music ensembles, Math league, Art Club and Dodgeball.

Start Time / End Time	Indigenous/World Languages
7:50 a.m.-2:26 p.m.	Spanish Immersion Pathway



High School

SoWashCo Schools has three comprehensive high schools, an online high school and an alternative high school serving students in grades 9-12. Each school offers a variety of unique opportunities, classes and programs for students. High school students will continue to gain skills that will help them prepare and succeed in their lives after high school.



To determine your student's boundary school, use our boundary school calculator at sowashco.org/enroll or contact the Student Information Department at 651-425-6328.

***Please note: boundaries are subject to change.**

High Schools



East Ridge High School (9-12)

4200 Pioneer Dr. Woodbury, MN 55129 | erhs.sowashco.org | 651-425-2300

- East Ridge High School (ERHS) offers an Engineering and Computer Science Pathway for students interested in pursuing a STEM (science, technology, engineering and math) career with classroom spaces for robotics and woodworking, science labs for biomedical, biology, chemistry, physics and physical science, visual arts classrooms for theater, ceramics, painting and photography and a fully equipped consumer science kitchen.
- ERHS has multiple spaces that are tailored to serving special education students of all needs including the School Cafe vocational program.
- Students can participate in College in Schools (CIS) through the University of Minnesota, 916 Courses through Century College, Advanced Placement (AP) courses, Post Secondary Enrollment Options (PSEO) and Project Lead The Way (PLTW) Engineering and Biomedical Sciences Sequences.
- ERHS has several flexible learning classrooms to encourage collaborative and individual learning.
- The activity center has an indoor track, six wood-floor courts and a strength and conditioning center.
- Students can join more than 80 clubs and activities including robotics, speech, debate, theater, varsity athletics, adapted athletics, National Honor Society, Asian American Club, Diversity Club and more.

Start Time / End Time	Indigenous / World Languages	
8:30 a.m.-3:06 p.m.	<ul style="list-style-type: none"> • Spanish • French 	<ul style="list-style-type: none"> • German

Park High School (9-12)

8040 80th Street S. Cottage Grove, MN 55016 | phs.sowashco.org | 651-425-3700

- Park High School (PHS) is an International Baccalaureate (IB) World School offering an academically challenging and balanced program that prepares high school students for success in college and in life.
- PHS was the first school in Minnesota to earn the AVID (Advancement Via Individual Determination) National School Distinction.
- In addition to IB courses, PHS also offers Post Secondary Enrollment Option (PSEO) and College in School (CIS) Advanced Placement (AP) courses and Concurrent Enrollment courses where students can earn college credit.
- PHS offers trade and industry programs where students have access to wood shop, small engines and metals labs.
- Students can get creative in 3D printing, laser cutting and other high-tech options. There is also an inventor space that is supported by grants from 3M.
- PHS offers more than 50 clubs and activities including: affinity groups, Link Crew, National Honor Society, speech team, theater, yearbook and varsity athletics
- PHS has an expansive athletic facility that includes a climate-controlled activity center with four courts, an indoor second story track, wrestling gym, gymnastics center and a large weight room.

Start Time / End Time	Indigenous / World Languages	
8:30 a.m.-3:06 p.m.	<ul style="list-style-type: none"> • French and IB French 	<ul style="list-style-type: none"> • Spanish and IB Spanish

High Schools



Woodbury High School (9-12)

2665 Woodlane Dr. Woodbury, MN 55125 | whs.sowashco.org | 651-425-4400

- Woodbury High School (WHS) offers the continuation of the Spanish Immersion pathway from Woodbury Middle School
- WHS offers the Junior Reserves Officer Training Corps (JROTC) courses.
- WHS is proud to offer College in Schools (CIS), Advanced Placement (AP) courses, Concurrent Enrollment courses for college credits and Project Lead the Way (PLTW) Engineering.
- Students can register for an auto shop course and work on real vehicles.
- 3M tutors are available for students in math and science courses before school.
- WHS offers more than 50 clubs and more than 50 varsity sports and activities including a nationally recognized speech team, mock trial, musical ensembles, marching band, theatre, Black Student Union, Asian American Club, Hispanic/Latino Club, Muslim Student Association and more.

Start Time / End Time	Indigenous / World Languages	
8:30 a.m.-3:06 p.m.	<ul style="list-style-type: none">• German• French• Spanish	<ul style="list-style-type: none">• American Sign Language (ASL)• Mandarin Chinese



Non-Traditional High Schools



SoWashCo Schools is proud to offer SoWashCo Online and South Washington Alternative High School for students in grades 10–12. The schools offer a non-traditional learning environment to fit students' needs while still preparing them to become college and career-ready.

SoWashCo Online (9–12)

online.sowashco.org | 651-425-7303

- SoWashCo Online provides students the flexibility to learn on their schedule in a location that best meets their needs.
- Students can join SoWashCo Online as a full-time student, or part-time as an addition to their in-person classes at school.
- Courses offered include honors courses and Advanced Placement (AP) for potential college credit.
- Throughout the course, students will have the opportunity for one-on-one and/or small group support.
- Highly personalized learning pathway that helps students manage their time while providing structure to keep students motivated, engaged, and on track to complete coursework.

Start Time / End Time	Indigenous / World Languages
Varies	Mandarin Chinese

South Washington Alternative High School (10–12)

8400 E. Point Douglas Rd. S. Cottage Grove, MN 55016 | swahs.sowashco.org | 651-425-7000

- South Washington Alternative High School (SWAHS) offers flexible learning to meet the needs of students where a traditional high school may not be a good fit.
- The Work Experience Program provides elective credits for students working outside of the school day in addition to their regular class schedule
- The Achievement Lab allows students to work in a hybrid setting where they attend school in person twice a week to get individualized support and participate in e-learning the other three days of the week.
- 3D printers are available to students to explore engineering and programming. Innovative technology is incorporated into our art classroom to provide students with the opportunity to explore different skills.
- SWAHS offers college courses through Century College where students can earn college credit while working toward high school graduation.
- Students can participate in various clubs such as art club, Gay Straight Alliance, Black Student Union and multimedia club. Additionally, during fifth period every other Friday, SWAHS provides students the opportunity to participate in activities extending beyond the classroom such as yoga, mindfulness, art, board games, basketball and video gaming.

Start Time / End Time	Indigenous / World Languages
8:45 a.m.–2:25 p.m.	None



Great Rivers Adult Education Consortium



The Great Rivers Adult Education Consortium provides adult education, professional development, diploma completion and English language courses to adults ages 17+. Programming is available for residents of Minnesota at no cost. Learn more and apply at commed.sowashco.org/greatrivers.

Adult Education and Professional Development

- Essential computer skills
- Internet and email basics
- Essential software skills – including Microsoft Word, Excel, PowerPoint and Google Docs
- Using technology in daily life – social media, information literacy, career search skills, supporting K-12 distance learning and your digital footprint
- Customer service internship
- Microsoft Office Specialist (MOS) Associate Certificate Training
- Official Certiport MOS Test Center

Diploma Completion

Earn your high school equivalency diploma (GED® or HiSET®) or K-12 diploma.

- K-12 diploma completion
- GED® or HiSET® test preparation
- Official Pearson Vue GED® Test Center
- Official PSI HiSET® Test Center

English Language

Learn to speak, read and write in English. Beginning, intermediate and advanced classes are available.

Additional support courses:

- Conversation
- Pronunciation
- English in the workplace
- Practical life skills
- Basic computer skills
- Career exploration
- U.S. citizen test prep

Locations:

District Program Center

8400 East Point Douglas Rd. S., Cottage Grove, MN 55016

Woodbury Central Park

8595 Central Park Pl, Woodbury, MN 55125

Tilden Community Center

310 River St, Hastings, MN 55033

Register online at commed.sowashco.org/greatrivers



No English?

Please text or email, in your own language, for information about our FREE programs.

Envíe un mensaje de texto o correo electrónico, en su propio idioma, para solicitar información sobre nuestros programas GRATUITOS.

651-270-3266 | greatrivers@sowashco.org

SoWashCo School Board

School board business meetings are streamed on SoWashCo Schools Youtube page, www.youtube.com/sowashcoschools.

School Board Members

- Ryan Clark
- Melinda Dols
- Patricia Driscoll
- Simi Patnaik
- Katie Schwartz
- Eric Tessmer
- Sharon Van Leer



SoWashCo Schools District Directory

Name	Title	Email
Julie Nielsen	Superintendent	super@sowashco.org
Tyrone Brookins	Assistant Superintendent	tbrookin@sowashco.org
Kelly Jansen	Assistant Superintendent	kjansen@sowashco.org
Kristine Schaefer	Assistant Superintendent	kschae2@sowashco.org
James Magee	Department of Diversity, Equity and Inclusion Director	jmagee@sowashco.org
Shawn Hogendorf	Department of Communications and Community Relations Director	shogendo@sowashco.org
Robert Lawrence	Department of Community Education Director	rlawrenc1@sowashco.org
Kyle Uecker	Department of Facilities and Construction Director	kuecker@sowashco.org
Dan Pyan	Department of Finance and Operations Executive Director	dpyan0@sowashco.org
Kris Blackburn	Department of Business Services Director	kblackburn@sowashco.org
Abby Baker	Department of Human Resources and Benefits Director	abaker3@sowashco.org
Wendy Peterson	Department of Nutrition Services Director	wpeterso1@sowashco.org
Mao Jacobson	Department of Program Evaluation, Research and Assessment Director	mjacobso1@sowashco.org
Erin McKoy	Department of Special Services Interim Director	emckoy@sowashco.org
Trisha Turitto	Department of Student Services Manager	tturitto@sowashco.org
Arthur Williams	Department of Teaching and Learning Services - Elementary Education Director	awilliam17@sowashco.org
Tia Clasen	Department of Teaching and Learning Services - Secondary Education Director	tclassen@sowashco.org
Robert Berkowitz	Department of Technology Services Director	rberkowitz@sowashco.org
Carrie Olson	Department of Transportation Services Director	colson@sowashco.org
Nikki Clymer	Department of English Language Learners Supervisor	nclymer@sowashco.org

Enrollment Questions and Answers

Student Information Services

What is Student Information's Role?

SoWashCo Schools Student Information Services works to assist students and families in finding their boundary schools, enrollment, homeschooling option, intra-district transfers, open enrollment, Infinite Campus support, student records, demographics, graduation and immunization records.

What is an Intra-District Transfer?

Intra-district transfers (IDT) are for students in grades K-12 living within the boundaries of SoWashCo Schools but wish to attend a school other than their boundary school or wish to transfer from a private or charter school.

What is the Application Process for an IDT?

Families can apply for intra-district transfer annually. The application process begins Oct. 15. Applications submitted after the deadline are added to existing waitlists. More information can be found at sowashco.org/enroll.

What is the Application Process for Open enrollment?

Families can apply to open enroll their child(ren) in some SoWashCo Schools by completing the open enrollment application, found at sowashco.org/enroll. Due to capacity constraints, some schools and grade levels are closed to open enrollment.

Can my child finish the school year if our family is moving outside of SoWashCo Schools boundaries?

Students moving outside of SoWashCo Schools attendance boundaries during the school year may apply for open enrollment to finish the school year at their current school; however, the student may be assigned to a different school the following year. SoWashCo Schools retains the right to assign non-resident students to other schools when these transitions occur, based on capacity and program.

For further assistance please contact the Student Information Department at 651-425-6218.



Health Services

SoWashCo Schools Health Services helps eliminate and minimize health-related barriers to learning. Health services staff provide care for students with:

- Illness
- Injuries
- Chronic health conditions
- Perform medical treatments and procedures
- Medication administration
- Immunization review and compliance monitoring
- Implementations of health accommodations
- Creation and implementation of individualized health plans and emergency care plans
- Care coordination with parents and health care providers
- Prevention and control of communicable diseases
- Vision and hearing screening
- Staff education and training

Reporting an Absence

Families should report their student's absence each day they will be absent from school. Families can report their student's absence through Campus Parent Portal.

Once logged into your account:

- Use the "Absence Request" tool to submit a request to the attendance office before your student is going to be absent.
 - Please include a comment of the symptoms your student is experiencing.
- The attendance office will process the request and an attendance record will be created for your student in your Campus Parent Portal account.

If you are unable to use your Campus Parent Portal account, please call your student's school and provide:

- Student's name
- Student's grade
- Why they are absent
- If your student has symptoms or has been diagnosed with any communicable disease.

Prescription Medication Distribution

SoWashCo Schools provides health services personnel to dispense medication to students in need of medication during school hours. Families must complete the parental permission form, have a health care provider sign the form and follow all other requirements as listed at sowashco.org/services/health.

Vision Screening

Healthy students are better learners. The ability to see adequately is directly linked to academic success. SoWashCo Schools Health Services annually screen students for vision acuity.

- Vision screening is provided for all students.
- Color vision screening is done each year for kindergarten boys only.
- Additional vision or hearing screening may be requested by the teacher, parent, or student or when a student is referred for evaluation of educational concerns.
- Families will be notified of students who do not pass screening via a referral form that the health care provider completes. Once complete, it should be returned to the school health office.



Required Immunizations



The Minnesota School Immunization Law (Minn. Statute 121A.15) requires that all students enrolled in school be protected from childhood diseases by receiving immunizations. This includes students enrolled in Preschool-12 schools or programs, Kids Club, preschool, alternative programs and home school programs.

Your student's immunization dates, or a medical or non-medical exemption, must be shared with the school health office before the first day of school. For more information including required forms, low-cost immunization clinics and recommended immunizations for teens, please visit sowashco.org/health.



Required Vaccinations			
Birth through Age 4 Early Childhood programs and child care	Age 5 to 6 Kindergarten	Age 7 to 11 Grades 1-6	Age 12 and Older Grades 7-12
Hepatitis A (Hep A) ✓	-----	-----	-----
Hepatitis B (Hep B) ✓✓✓	Hepatitis B (Hep B) ✓✓✓	Hepatitis B (Hep B) ✓✓✓	Hepatitis B (Hep B) ✓✓✓
DTap/DT ✓✓✓✓	DTap/DT ✓✓✓✓	Tetanus and Diphtheria containing doses ✓✓✓	Tdap (and at least two tetanus and diphtheria containing doses) ✓
Polio ✓✓✓	Polio ✓✓✓✓	Polio ✓✓✓	Polio ✓✓✓
MMR ✓	MMR ✓✓	MMR ✓✓	MMR ✓✓
Hib ✓	-----	-----	Meningococcal and booster ✓
Pneumococcal ✓✓✓✓	-----	-----	-----
Varicella (Chicken Pox) ✓	Varicella (Chicken Pox) ✓✓	Varicella (Chicken Pox) ✓✓	Varicella (Chicken Pox) ✓✓
Highly Recommended, But Not Required			
Rotavirus (for infants)	Influenza (annually for anyone age six months and older)	COVID-19 Vaccine (available for anyone age 6 months and older)	Human Papillomavirus (begins at ages 11-12)

✓ Each check mark represents the number of doses a child should have by age group.

Nutrition Services

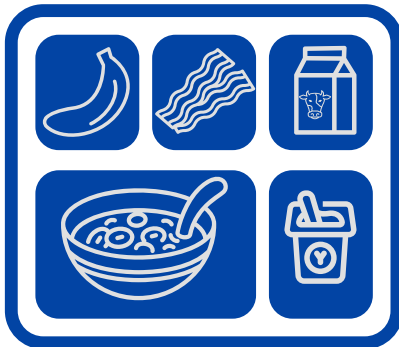
Nutrition Services provides healthy and nutritious meals to students that meets or exceeds USDA standards. Every menu consists of whole grains, lean protein, fruit and/or vegetable and milk daily.

Free Meals

Every child enrolled in SoWashCo Schools is eligible to receive free breakfast and lunch in accordance with the Free School Meals law in Minnesota. To qualify as a free meal, students must meet the following requirements for breakfast and lunch food selections:



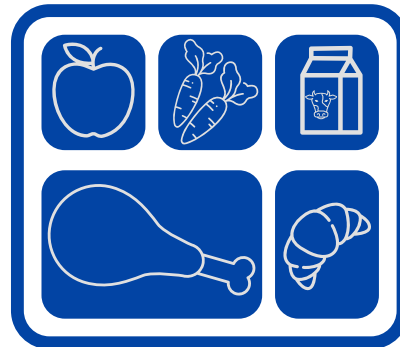
Free Breakfast



Must Have At Least 3 Items

- 1 serving of a fruit and/or vegetable (Required)
- 1 serving of protein
- 1 serving of milk
- 1 serving of grains

Free Lunch



Must Have 3 Components

- 1 serving of a fruit and/or vegetable (Required)
- 1 serving of protein (meat or meat substitute)
- 1 serving of milk
- 1 serving of grains

SchoolCafé

SoWashCo Schools uses SchoolCafé for student meal accounts. All items outside of the complete meal are considered ala carte purchases. These purchases require funds available in the student's lunch account. Parents can set low-balance email reminders, schedule automatic payments when a balance of your choosing is reached, review student purchases online, view menus and apply for free and reduced education benefits.

Educational Benefits

SoWashCo Schools families are encouraged to apply for educational benefits every year. Households that qualify will receive discounted or free services both in and out of school. SoWashCo Schools serves the same healthy meals to all students and provides the same services, no matter their income status.

Applications can be submitted online, dropped off at your child's school or the District Service Center. For more information or to access the application visit, sowashco.org/services/nutrition.

Family Resources



Calendar

The district and family calendar can be found at sowashco.org/calendar. K-12 calendars specific to your child's school can be found on the school's website for students.



Campus Parent Portal

Campus Parent Portal allows parents or guardians to view online information about student class schedules, report and view attendance, view school bus route assignments, and more. Parents and guardians are required to update their accounts annually before the school year.



EduTrak

EduTrak is used for processing payments for school fees such as parking, transcripts, clubs, competitive activities and more. You can set up an account at sowashco.org/fees.



School Café

Menus and student school meal accounts can be viewed and managed through SchoolCafé. SchoolCafé has a free mobile app available for use on any mobile device. For more information on how to access SchoolCafé visit sowashco.org/nutrition.



Schoolology

Schoolology is an online learning platform, or Learning Management System (LMS), used at all secondary SoWashCo Schools. Teachers post assignments, classroom resources, quizzes and a course calendar with due dates and deadlines. Students and parents should use Schoolology to review assignments and grades to stay on top of academic progress. For more information visit sowashco.org/parents/schoolology. For help with Schoolology, please email schoolologyhelp@sowashco.org.



Seesaw

Seesaw is a student portfolio intended to give students in grades Preschool-5 a place to create, submit and share learning with the class, teachers and parents. The simplicity of Seesaw provides an easy entry into digital learning. The Seesaw class and family apps are available to download on Android and iOS. For more information visit sowashco.org/parents/seesaw. For help with Seesaw, please email seesawHelp@sowashco.org.

Family Calendar

2024-2025 School Year

Important Dates

Event Information		Grades
SEPTEMBER		
3	First Day of School	6, 9
4	First Day of School	K-5, 7-8, 10-12
30	No School	K-12
OCTOBER		
16	No School	K-8
16	Pre-ACT and Practice ACT Testing	10, 11
16	Complete Schoolwork at Home Day	9, 12
17-18	No School - Fall Break (MEA)	K-12
NOVEMBER		
5	No School - Professional Development	K-5
5	Complete Schoolwork at Home Day	6-12
26	End of Trimester 1	K-12
27	No School - Teacher Workday	K-12
28-29	No School - Employee Holiday	K-12
DECEMBER		
2	No School - Professional Development	K-12
23-31	No School - Winter Break	K-12
JANUARY		
1-3	No School - Winter Break	K-12
20	No School - MLK Jr. Day	K-12
FEBRUARY		
14	No School - Professional Development	K-5
14	Complete Schoolwork at Home Day	6-12
17	No School - Presidents Day	K-12
MARCH		
7	End of Trimester 2	K-12
10-14	No School - Spring Break	K-12
17	No School - Teacher Workday	K-12
APRIL		
TBD	MCA, ACT, Seal of Biliteracy Testing	10, 11, 12
TBD	Complete Schoolwork at Home Day	9, 10, 12
18	No School - Employee Holiday	K-12
21	No School - Professional Development	K-12
MAY		
23	No School - Professional Development	K-12
26	No School - Memorial Day Holiday	K-12
JUNE		
4	Last Day of School, End of Trimester 3	K-12

SoWashCO

SCHOOLS

AUGUST 2024						
S	M	T	W	T	F	S
				1	2	3
4	5	6	7	8	9	10
11	12	13	14	15	16	17
18	19	20	21	22	23	24
25	26	27	28	29	30	31

SEPTEMBER 2024						
S	M	T	W	T	F	S
1	2	3	4	5	6	7
8	9	10	11	12	13	14
15	16	17	18	19	20	21
22	23	24	25	26	27	28
29	30					

OCTOBER 2024						
S	M	T	W	T	F	S
		1	2	3	4	5
6	7	8	9	10	11	12
13	14	15	16	17	18	19
20	21	22	23	24	25	26
27	28	29	30	31		

NOVEMBER 2024						
S	M	T	W	T	F	S
					1	2
3	4	5	6	7	8	9
10	11	12	13	14	15	16
17	18	19	20	21	22	23
24	25	26	27	28	29	30

DECEMBER 2024						
S	M	T	W	T	F	S
1	2	3	4	5	6	7
8	9	10	11	12	13	14
15	16	17	18	19	20	21
22	23	24	25	26	27	28
29	30	31				

JANUARY 2025						
S	M	T	W	T	F	S
			1	2	3	4
5	6	7	8	9	10	11
12	13	14	15	16	17	18
19	20	21	22	23	24	25
26	27	28	29	30	31	

FEBRUARY 2025						
S	M	T	W	T	F	S
						1
2	3	4	5	6	7	8
9	10	11	12	13	14	15
16	17	18	19	20	21	22
23	24	25	26	27	28	

MARCH 2025						
S	M	T	W	T	F	S
						1
2	3	4	5	6	7	8
9	10	11	12	13	14	15
16	17	18	19	20	21	22
23	24	25	26	27	28	29
30	31					

APRIL 2025						
S	M	T	W	T	F	S
		1	2	3	4	5
6	7	8	9	10	11	12
13	14	15	16	17	18	19
20	21	22	23	24	25	26
27	28	29	30			

MAY 2025						
S	M	T	W	T	F	S
				1	2	3
4	5	6	7	8	9	10
11	12	13	14	15	16	17
18	19	20	21	22	23	24
25	26	27	28	29	30	31

JUNE 2025						
S	M	T	W	T	F	S
1	2	3	4	5	6	7
8	9	10	11	12	13	14
15	16	17	18	19	20	21
22	23	24	25	26	27	28
29	30					

JULY 2025						
S	M	T	W	T	F	S
		1	2	3	4	5
6	7	8	9	10	11	12
13	14	15	16	17	18	19
20	21	22	23	24	25	26
27	28	29	30	31		

First or Last Day of School

No School for Students (K-12)

Important Date

Last Updated: Nov. 30, 2023
Calendar is subject to change

EDUCATIONAL BENEFITS

Apply in August through your **School Café** account

Benefits In School



Field Trips



Athletics



Student Fees



Kids Club



Device
Protection
Plans



Instrument
Rentals



Community
Education



School
Funding

Benefits Out of School



Some Energy
Providers



Some Internet
Providers



Some Phone
Providers



Public
Transportation



Theatres



Zoos



Museums



More

IMMEDIATE OPENINGS



SoWashCo Schools has immediate openings for:

- School Bus Drivers
- Nutrition Services
- Paraprofessionals
- Kids Club
- Special Education
- Athletic and Activity Coaches

Work in the
Community
You Live In!



Apply at sowashco.org/careers





Independent School District #833
7362 East Point Douglas Rd. S.
Cottage Grove, MN 55016
www.sowashco.org

NON-PROFIT ORG.
U.S. POSTAGE
PAID
PERMIT NO. 7911
TWIN CITIES, MN

Stay Connected



[@sowashcoschools](https://www.instagram.com/sowashcoschools)



Sign up for our
e-newsletter at
sowashco.org/news



Securing Our Future
Supporting Our Students.

Thank You Voters



We are grateful for the community's support
in our recent bond and levy election.

SoWashCo Schools has begun the design and planning process
for 15 construction projects across the district.

Learn More at sowashco.org/facilityplanning