



# WELCOME TO HOLLYGLEN ELEMENTARY SCHOOL

A WISEBURN USD SCHOOL  
*Engage. Empower. Elevate.*





# Introductions

**Lisa Wilberg**

Principal

Two white starburst graphics are located in the bottom right corner of the slide.



# Agenda

- School Tour
- Beginning Your Journey at Hollyglen
- Permit process

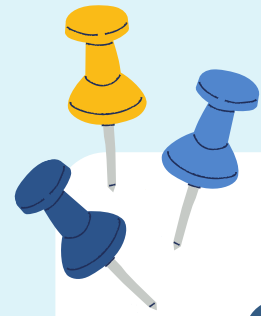






# Why our Students Love Learning at Hollyglen





# STUDENT EXPERIENCE

## 1. Excited to come to school every day

- Spirit Days
- Events
- Friends
- Learning

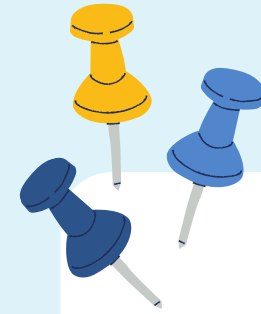


"My son wakes up extra early for school so he can be the first in line."

Hollyglen keeps their students motivated to be responsible to arrive early to school and have lots of fun learning!"

**-Erika U.**  
***Hollyglen***  
***parent***





# STUDENT EXPERIENCE

## 2. Learning is fun and engaging

- Hands-on
- Collaborative
- Personalized

**Example:** Math instruction strategies like counting collections, number talks/choral counting, and story problems/share outs







Example:

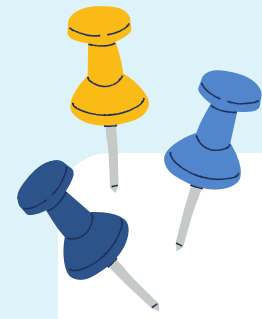
# Writer's Workshop



Ryan—Kindergarten







# STUDENT EXPERIENCE

## 3. Feeling comfortable and at home

- Approachable grown-ups
- Friendly school community
- Inclusive environment
- Small class sizes

Grade Level	Students per Class	Classes per Grade
TK	24	4
K	24	6
1st	24	6
2nd	24	6



- English Language Development
- Special Education
- Intervention





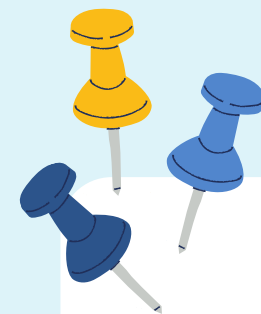
# STUDENT EXPERIENCE

## 4. Variety of special classes and experiences

- Physical education
- Music
- STEAM lab hands-on activities in science and art
- Library and tech time







# STUDENT EXPERIENCE

## 5. Positive reinforcement of behavior: The 3 B's

- Be Respectful!
- Be Responsible!
- Be Safe!



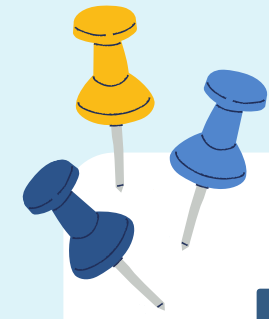
Students love our **Cub Cards** program and celebrations!





## Why our Parents & Caretakers Choose Hollyglen





# Parent & Caretaker Experience

## 1. Safe, supportive, and nurturing environment

- Wiseburn is ranked #3 safest school district in California (Niche, 2022)
- Hollyglen staff create a positive, empowering school climate







# Student supports

& Social/Emotional Development

1

Positive Behavior Intervention & Support

2

Cub Time Assemblies

3

Restorative Discipline Practices

4

CARE Team

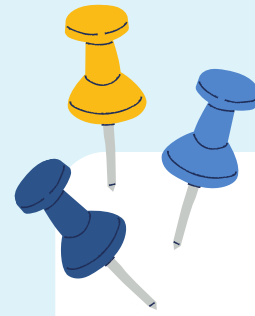
5

Second Step Curriculum

+

English Language Initiative, Learning Lab Support



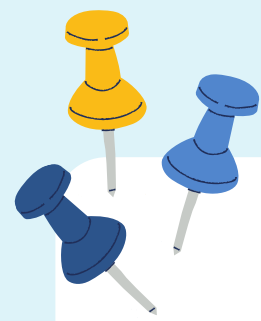


## Parent & Caretaker Experience

### 2. Instruction that prioritizes student voice, choice, and inquiry

- Emphasis on student-centered engagement:
  - Cognitively-guided instruction in math
  - Writer's Workshop
  - Inquiry-based science
  - Small reading group instruction



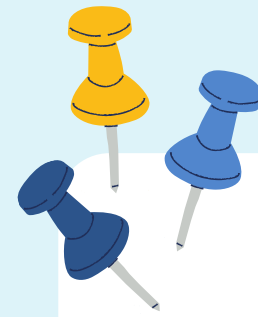
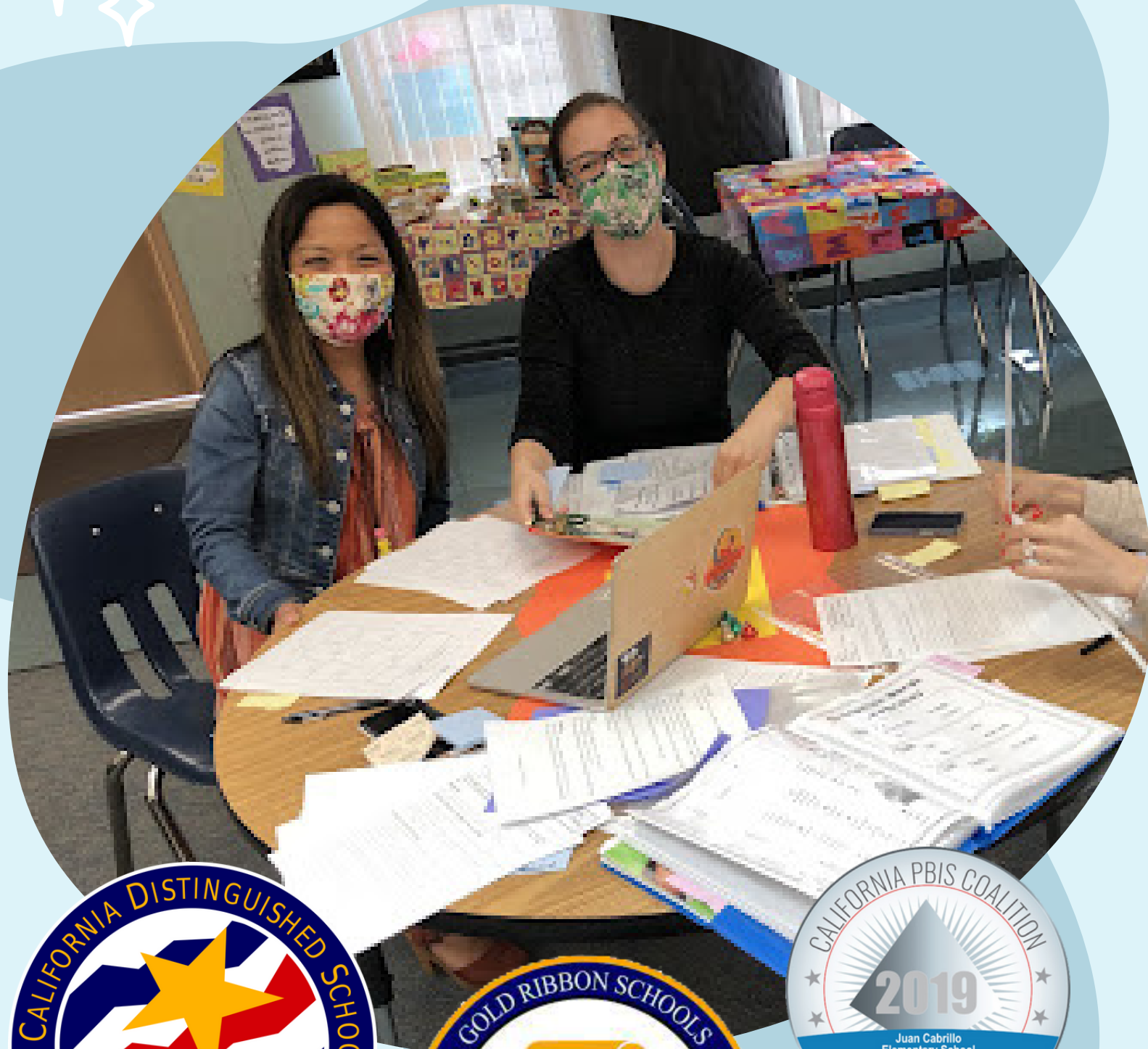


# Parent & Caretaker Experience

## 3. Strong community and opportunities for parent involvement

- Parent-Teacher Association
- Wiseburn Education Foundation
- School community events:
  - Spirit Days
  - Hollyglen Games
  - Assemblies
  - Book Fairs
  - Movie Nights
  - Rock Around the Block



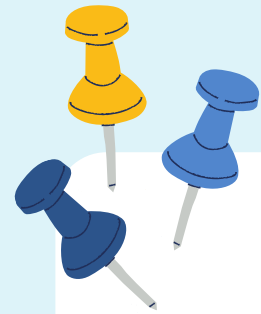


## Parent & Caretaker Experience

### 4. Dedicated teaching staff who embrace continuous improvement

- 3 recent Wiseburn Teachers of the Year
- Grants that support professional development
- Teacher collaboration time
- Teachers on Special Assignment
- Numerous school accolades





# Parent & Caretaker Experience

## 5. Integration of technology in learning

- Building future-ready students, but at developmentally-appropriate levels (i.e. screen time limits)







# BEGINNING YOUR JOURNEY AT HOLLYGLEN







# TRANSITIONAL KINDERGARTEN



Two year Kindergarten program.

Year 1: TK → Year 2: Kindergarten

## Eligibility:

- Birthday window changes by two months each year
- For 2024-25: A child will be enrolled in TK if they were born between September 2, 2019 – June 2, 2020





# YOUR STUDENT'S PATH



TK – 2nd grade

Hollyglen Elementary



3rd – 5th grade

Aviation Elementary



6th – 8th grade

Wiseburn Middle School

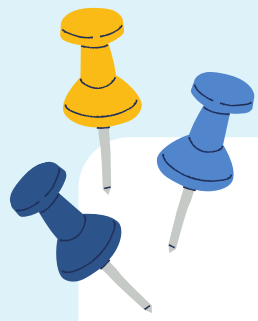


9th – 12th grade

Wiseburn High School:  
Home of the Da Vinci Charters







# Parent & Caretaker Experience

Right at School: A safe, caring and fun place for before and after school enrichment

- Homework Support
- Disguised Learning Activities
- Daily Fitness
- Nurturing Educators
- Full Day Camps

**Program Manager:** Lisett Oropeza, 310-339-4772

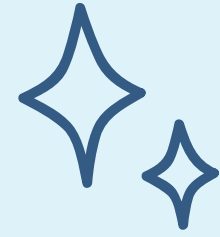
**Customer Service:** 855-287-2466

**Email:** [hollyglen@rightatschool.com](mailto:hollyglen@rightatschool.com)

**Website:** [rightatschool.com](http://rightatschool.com)







# ENROLLMENT OPENS JANUARY 8!

- **Residents:** Enrollment is via SchoolMint
- **Permits:** More info following the tour

For More info:  
[wiseburn.org/enrollment](https://wiseburn.org/enrollment) →

For questions:  
[enrollment@wiseburn.org](mailto:enrollment@wiseburn.org)







**HOLLYGLEN**  
ELEMENTARY SCHOOL



# QUESTIONS? ✨



(310) 725-5400



[Hollyglen.wiseburn.org](https://hollyglen.wiseburn.org)



@Hollyglencubs