

**WYOMING CITY SCHOOL DISTRICT
HAMILTON COUNTY**



SINGLE AUDIT

FOR THE YEAR ENDED JUNE 30, 2021

PLATTENBURG
Certified Public Accountants

OHIO AUDITOR OF STATE
KEITH FABER



88 East Broad Street
Columbus, Ohio 43215
IPAReport@ohioauditor.gov
(800) 282-0370

Board of Education
Wyoming City School District
420 Springfield Pike
Wyoming, OH 45215

We have reviewed the *Independent Auditor's Report* of the Wyoming City School District, Hamilton County, prepared by Plattenburg & Associates, Inc., for the audit period July 1, 2020 through June 30, 2021. Based upon this review, we have accepted these reports in lieu of the audit required by Section 117.11, Revised Code. The Auditor of State did not audit the accompanying financial statements and, accordingly, we are unable to express, and do not express an opinion on them.

Our review was made in reference to the applicable sections of legislative criteria, as reflected by the Ohio Constitution, and the Revised Code, policies, procedures and guidelines of the Auditor of State, regulations and grant requirements. The Wyoming City School District is responsible for compliance with these laws and regulations.

A handwritten signature in cursive script that reads "Keith Faber".

Keith Faber
Auditor of State
Columbus, Ohio

December 16, 2021

This page intentionally left blank.

**WYOMING CITY SCHOOL DISTRICT
HAMILTON COUNTY
FOR THE YEAR ENDED JUNE 30, 2021**

TABLE OF CONTENTS

TITLE	PAGE
Independent Auditor’s Report.....	1
Management’s Discussion and Analysis	3
Basic Financial Statements:	
Government-wide Financial Statements:	
Statement of Net Position	11
Statement of Activities	12
Fund Financial Statements:	
Balance Sheet	
Governmental Funds	13
Reconciliation of Total Governmental Fund Balances to Net Position of Governmental Activities	14
Statement of Revenues, Expenditures and Changes in Fund Balance Governmental Funds	15
Reconciliation of the Statement of Revenues, Expenditures and Changes in Fund Balances of Governmental Funds to the Statement of Activities.....	16
Statement of Changes in Fiduciary Net Position Fiduciary Fund	17
Notes to the Basic Financial Statements	18
Required Supplementary Information.....	51
Schedule of Expenditures of Federal Awards	67
Notes to the Schedule of Expenditures of Federal Awards	67
Independent Auditor’s Report on Internal Control Over Financial Reporting and on Compliance and Other Matters Based on an Audit of Financial Statements Performed in Accordance with <i>Government Auditing Standards</i>	68
Independent Auditor’s Report on Compliance for Each Major Federal Program and on Internal Control Over Compliance Required by Uniform Guidance	70
Schedule of Findings and Questioned Costs.....	72
Schedule of Prior Audit Findings and Questioned Costs	73

This page intentionally left blank.

INDEPENDENT AUDITOR'S REPORT

To the Board of Education
Wyoming City School District

Report on the Financial Statements

We have audited the accompanying financial statements of the governmental activities, each major fund, and the aggregate remaining fund information of the Wyoming City School District (the District) as of and for the year ended June 30, 2021, and the related notes to the financial statements, which collectively comprise the District's basic financial statements as listed in the table of contents.

Management's Responsibility for the Financial Statements

Management is responsible for the preparation and fair presentation of these financial statements in accordance with accounting principles generally accepted in the United States of America; this includes the design, implementation, and maintenance of internal control relevant to the preparation and fair presentation of financial statements that are free from material misstatement, whether due to fraud or error.

Auditor's Responsibility

Our responsibility is to express opinions on these financial statements based on our audit. We conducted our audit in accordance with auditing standards generally accepted in the United States of America and the standards applicable to financial audits contained in *Government Auditing Standards*, issued by the Comptroller General of the United States. Those standards require that we plan and perform the audit to obtain reasonable assurance about whether the financial statements are free from material misstatement.

An audit involves performing procedures to obtain audit evidence about the amounts and disclosures in the financial statements. The procedures selected depend on the auditor's judgment, including the assessment of the risks of material misstatement of the financial statements, whether due to fraud or error. In making those risk assessments, the auditor considers internal control relevant to the entity's preparation and fair presentation of the financial statements in order to design audit procedures that are appropriate in the circumstances, but not for the purpose of expressing an opinion on the effectiveness of the entity's internal control. Accordingly, we express no such opinion. An audit also includes evaluating the appropriateness of accounting policies used and the reasonableness of significant accounting estimates made by management, as well as evaluating the overall presentation of the financial statements.

We believe that the audit evidence we have obtained is sufficient and appropriate to provide a basis for our audit opinions.

Opinions

In our opinion, the financial statements referred to above present fairly, in all material respects, the respective financial position of the governmental activities, each major fund, and the aggregate remaining fund information of the District, as of June 30, 2021, and the respective changes in financial position, for the year then ended in accordance with accounting principles generally accepted in the United States of America.

Other Matters

Required Supplementary Information

Accounting principles generally accepted in the United States of America require that the management's discussion and analysis, budgetary comparison information, pension information and postemployment benefit information be presented to supplement the basic financial statements. Such information, although not a part of the basic financial statements, is required by the Governmental Accounting Standards Board who considers it to be an essential part of financial reporting for placing the basic financial statements in an appropriate operational, economic, or historical context. We have applied certain limited procedures to the required supplementary information in accordance with auditing standards generally accepted in the United States of America, which consisted of inquiries of management about the methods of preparing the information and comparing the information for consistency with management's responses to our inquiries, the basic financial statements, and other knowledge we obtained during our audit of the basic financial statements. We do not express an opinion or provide any assurance on the information because the limited procedures do not provide us with sufficient evidence to express an opinion or provide any assurance.

Supplementary and Other Information

Our audit was conducted to opine on the District's basic financial statements taken as a whole.

The Schedule of Expenditures of Federal Awards presents additional analysis as required by Title 2 U.S. Code of Federal Regulations (CFR) Part 200, Uniform Administrative Requirements, Cost Principles, and Audit Requirements for Federal Awards and is not a required part of the financial statements.

The schedule is management's responsibility, and derives from and relates directly to the underlying accounting and other records used to prepare the basic financial statements. We subjected this information to the auditing procedures we applied to the basic financial statements. We also applied certain additional procedures, including comparing and reconciling this information directly to the underlying accounting and other records used to prepare the basic financial statements or to the basic financial statements themselves in accordance with auditing standards generally accepted in the United States of America. In our opinion, this information is fairly stated in all material respects in relation to the basic financial statements taken as a whole.

Other Reporting Required by *Government Auditing Standards*

In accordance with *Government Auditing Standards*, we have also issued our report dated December 10, 2021, on our consideration of the District's internal control over financial reporting and our tests of its compliance with certain provisions of laws, regulations, contracts, and grant agreements and other matters. The purpose of that report is to describe the scope of our testing of internal control over financial reporting and compliance and the results of that testing, and not to provide an opinion on internal control over financial reporting or on compliance. That report is an integral part of an audit performed in accordance with *Government Auditing Standards* in considering the District's internal control over financial reporting and compliance.

Plattenburg & Associates, Inc.

Plattenburg & Associates, Inc.
Cincinnati, Ohio
December 10, 2021

Wyoming City School District
Management's Discussion and Analysis
For the Fiscal Year Ended June 30, 2021
(Unaudited)

The discussion and analysis of Wyoming City School District's financial performance provides an overall review of the District's financial activities for the fiscal year ended June 30, 2021. The intent of this discussion and analysis is to look at the District's financial performance as a whole; readers should also review the notes to the basic financial statements and financial statements to enhance their understanding of the District's performance.

Financial Highlights

Key financial highlights for 2021 are as follows:

- Net position of governmental activities increased \$7,463,464 which represents a 93% increase from 2020.
- General revenues accounted for \$37,279,352 in revenue or 92% of all revenues. Program specific revenues in the form of charges for services and sales, grants and contributions accounted for \$3,310,444 or 8% of total revenues of \$40,589,396.
- The District had \$33,125,932 in expenses related to governmental activities; \$3,310,044 of these expenses were offset by program specific charges for services, grants or contributions. General revenues of \$37,279,352 were also used to provide for these programs.

Overview of the Financial Statements

This annual report consists of a series of financial statements and notes to those statements. These statements are organized so the reader can understand the District as a financial whole, an entire operating entity. The statements then proceed to provide an increasingly detailed look at specific financial activities.

The *Statement of Net Position* and *Statement of Activities* provide information about the activities of the whole District, presenting both an aggregate view of the District's finances and a longer-term view of those finances. Fund financial statements provide the next level of detail. For governmental funds, these statements tell how services were financed in the short-term as well as what remains for future spending. The fund financial statements also look at the District's most significant funds with all other nonmajor funds presented in total in one column. The General Fund and Debt Service Fund are the major funds of the District.

Government-wide Financial Statements

While this document contains the large number of funds used by the District to provide programs and activities, the view of the District as a whole looks at all financial transactions and asks the question, "How did we do financially during 2021?" The Government-wide Financial Statements answer this question. These statements include *all assets and deferred outflows* and *liabilities and deferred inflows* using the accrual basis of accounting similar to the accounting used by most private-sector companies. This basis of accounting takes into account all of the current year's revenues and expenses regardless of when cash is received or paid.

Wyoming City School District
Management's Discussion and Analysis
For the Fiscal Year Ended June 30, 2021
(Unaudited)

These two statements report the District's *net position* and changes in net position. This change in net position is important because it tells the reader that, for the District as a whole, the financial position has improved or diminished. The causes of this change may be the result of many factors, both financial and non-financial. Non-financial factors include the District's property tax base, current property tax laws in Ohio restricting revenue growth, facility conditions, required educational programs and other factors.

In the Government-wide Financial Statements, the overall financial position of the District is presented as Governmental Activities. All of the District's programs and services are reported here including instruction, support services, operation of non-instructional services, extracurricular activities, and interest and fiscal charges.

Fund Financial Statements

The analysis of the District's major funds is presented in the Fund Financial Statements. Fund financial reports provide detailed information about the District's major funds. The District uses many funds to account for a multitude of financial transactions. However, these fund financial statements focus on the District's most significant funds.

Governmental Funds Most of the District's activities are reported in governmental funds, which focus on how money flows into and out of those funds and the balances left at year-end available for spending in future periods. These funds are reported using an accounting method called *modified accrual* accounting, which measures cash and all other *financial assets* that can readily be converted to cash. The governmental fund statements provide a detailed *short-term view* of the District's general government operations and the basic services it provides. Governmental fund information helps you determine whether there are more or fewer financial resources that can be spent in the near future to finance educational programs. The relationship (or differences) between governmental *activities* (reported in the Statement of Net position and the Statement of Activities) and governmental *funds* is reconciled in the financial statements.

Fiduciary Funds Fiduciary Funds are used to account for resources held for the benefits of parties outside the government. Fiduciary Funds are not reflected in the government-wide financial statements because the resources of those funds are not available to support the District's own programs.

The District as a Whole

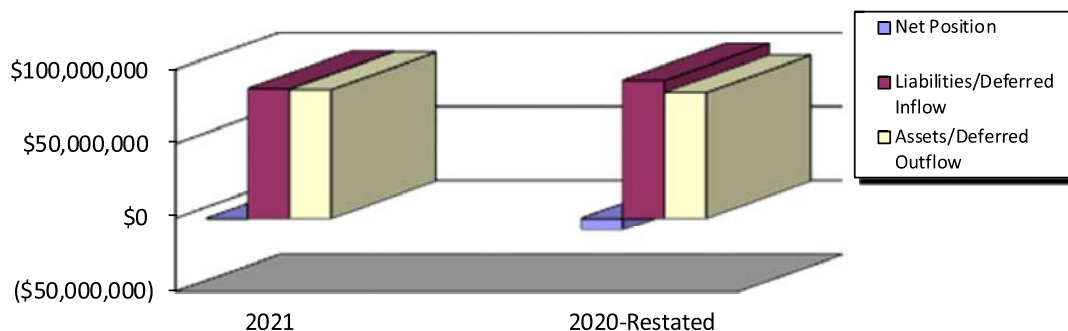
As stated previously, the Statement of Net position looks at the District as a whole. Table 1 provides a summary of the District's net position for 2021 compared to 2020:

This Space Intentionally Left Blank

Wyoming City School District
Management's Discussion and Analysis
For the Fiscal Year Ended June 30, 2021
(Unaudited)

Table 1
Net position

	Governmental Activities	
	2021	2020 - Restated
Assets:		
Current and Other Assets	\$32,384,187	\$31,392,921
Net OPEB Asset	1,996,156	1,897,362
Capital Assets	44,251,115	43,570,912
Total Assets	78,631,458	76,861,195
Deferred Outflows of Resources:		
Deferred Charge on Refunding	1,444,280	1,519,590
OPEB	944,485	600,673
Pension	5,942,059	6,008,918
Total Deferred Outflows of Resources	8,330,824	8,129,181
Liabilities:		
Other Liabilities	3,219,769	3,360,432
Long-Term Liabilities	71,425,325	70,784,248
Total Liabilities	74,645,094	74,144,680
Deferred Inflows of Resources:		
Property Taxes	8,477,554	13,484,167
OPEB	3,689,108	3,279,590
Pension	691,252	2,086,129
Total Deferred Inflows of Resources	12,857,914	18,849,886
Net Position:		
Net Investment in Capital Assets	11,863,457	9,131,906
Restricted	6,600,568	4,604,255
Unrestricted	(19,004,751)	(21,740,351)
Total Net Position, restated	(\$540,726)	(\$8,004,190)



Wyoming City School District
Management's Discussion and Analysis
For the Fiscal Year Ended June 30, 2021
(Unaudited)

Over time, net position can serve as a useful indicator of a government's financial position. At June 30, 2021, the District's liabilities and deferred inflows of resources exceeded assets and deferred outflows of resources by \$540,726. Capital assets increased due to the District's depreciation expense for the year being less than current year additions. Long-term liabilities increased mainly due to an increase in net pension liability.

At year-end, capital assets represented 56% of total assets. Capital assets include land, construction in progress, buildings and improvements, and equipment. Capital assets, net of related debt to acquire the assets at June 30, 2021, was \$11,863,457. These capital assets are used to provide services to the students and are not available for future spending. Although the District's investment in capital assets is reported net of related debt, it should be noted that the resources to repay the debt must be provided from other sources, since capital assets may not be used to liquidate these liabilities.

A portion of the District's net position, \$6,600,568 represents resources that are subject to external restriction on how they must be used. The external restriction will not affect the availability of fund resources for future use.

Table 2 shows the changes in net position for fiscal years 2021 and 2020.

Table 2
Changes in Net position

	Governmental Activities	
	2021	2020 - Restated
Revenues:		
Program Revenues		
Charges for Services	\$1,107,862	\$1,087,764
Operating Grants, Contributions	1,738,537	1,233,923
Capital Grants and Contributions	463,645	3,725,004
General Revenues:		
Income Taxes	9,485,240	6,689,634
Property Taxes	20,298,392	10,915,473
Grants and Entitlements	6,939,026	6,670,075
Other	556,694	725,312
Total Revenues	<u>40,589,396</u>	<u>31,047,185</u>
Program Expenses:		
Instruction	20,076,069	19,238,151
Support Services:		
Pupil and Instructional Staff	4,039,223	3,683,235
School Administrative, General		
Administration, Fiscal and Business	3,728,009	3,515,579
Operations and Maintenance	2,089,897	2,960,907
Pupil Transportation	494,215	554,012
Central	181,416	170,002
Operation of Non-Instructional Services	150,446	72,093
Extracurricular Activities	1,104,404	1,053,165
Interest and Fiscal Charges	1,262,253	1,323,075
Total Program Expenses	<u>33,125,932</u>	<u>32,570,219</u>
Change in Net Position	7,463,464	(1,523,034)
Beginning Net Position, Restated	<u>(8,004,190)</u>	<u>(6,481,156)</u>
Ending Net Position	<u>(\$540,726)</u>	<u>(\$8,004,190)</u>

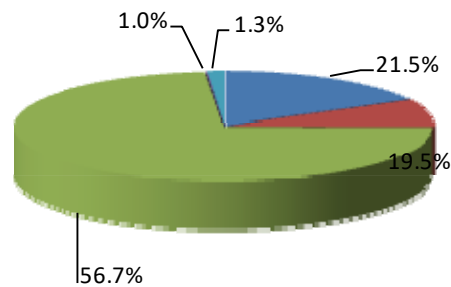
**Wyoming City School District
 Management’s Discussion and Analysis
 For the Fiscal Year Ended June 30, 2021
 (Unaudited)**

The District revenues are mainly from three sources. Income taxes, property taxes levied for general, debt service, capital project purposes, and grants and entitlements comprised 90% of the District’s revenues for governmental activities.

The District depends greatly on property taxes as a revenue source. The unique nature of property taxes in Ohio creates the need to routinely seek voter approval for operating funds. The overall revenues generated by a levy will not increase solely as a result of inflation. As an example, a homeowner with a home valued at \$100,000 and taxed at 1.0 mill would pay \$35.00 annually in taxes. If three years later the home were reappraised and increased to \$200,000 (and this inflationary increase in value is comparable to other property owners) the effective tax rate would become .5 mills and the owner would still pay \$35.00.

Thus Ohio districts dependent upon property taxes are hampered by a lack of revenue growth and must regularly return to the voters to maintain a constant level of service. Property taxes made up 50% of revenue for governmental activities for the District in fiscal year 2021.

Revenue Sources	2021	Percent of Total
General Grants	\$6,939,026	17.1%
Program Revenues	3,310,044	8.1%
General Tax Revenues	29,783,632	73.4%
Investment Earnings	39,266	0.1%
Other Revenues	517,428	1.3%
	<u>\$40,589,396</u>	<u>100.0%</u>



Instruction comprises 61% of governmental program expenses. Support services expenses were 32% of governmental program expenses. All other expenses including interest expense were 7%. Interest expense was attributable to the outstanding bond and borrowing for capital projects.

Property tax revenues increased mainly due to advances available from the county auditor increasing due to a postponed payment deadline because of the COVID-19 pandemic in the prior year. Total expenses increased due to changes related to net pension liability and other post employment benefits liability.

The Statement of Activities shows the cost of program services and the charges for services and grants offsetting those services. Table 3 shows, for government activities, the total cost of services and the net cost of services. That is, it identifies the cost of these services supported by tax revenue and unrestricted State entitlements.

This Space Intentionally Left Blank

**Wyoming City School District
Management’s Discussion and Analysis
For the Fiscal Year Ended June 30, 2021
(Unaudited)**

**Table 3
Governmental Activities**

	Total Cost of Services		Net Cost of Services	
	2021	2020 - Restated	2021	2020 - Restated
Instruction	\$20,076,069	\$19,238,151	(\$17,666,523)	(\$16,628,074)
Support Services:				
Pupil and Instructional Staff	4,039,223	3,683,235	(3,700,484)	(3,414,920)
School Administrative, General				
Administration, Fiscal and Business	3,728,009	3,515,579	(3,728,009)	(3,515,579)
Operations and Maintenance	2,089,897	2,960,907	(1,863,169)	(2,828,235)
Pupil Transportation	494,215	554,012	(477,559)	(539,613)
Central	181,416	170,002	(181,416)	(170,002)
Operation of Non-Instructional Services	150,446	72,093	(149,634)	(69,891)
Extracurricular Activities	1,104,404	1,053,165	(786,841)	1,965,861
Interest and Fiscal Charges	1,262,253	1,323,075	(1,262,253)	(1,323,075)
Total Expenses	<u>\$33,125,932</u>	<u>\$32,570,219</u>	<u>(\$29,815,888)</u>	<u>(\$26,523,528)</u>

The District’s Funds

The District has two major governmental funds: the General Fund and Debt Service Fund. Assets of these funds comprised \$30,130,521 (93%) of the total \$32,511,601 governmental funds’ assets.

General Fund: Fund balance at June 30, 2021 was \$13,768,619. The fund balance increased by \$4,339,367 mainly due to an increase in property tax revenue.

Debt Service Fund: Fund balance at June 30, 2021 was \$4,879,573. The fund balance increased by \$1,059,967.

General Fund Budgeting Highlights

The District’s budget is prepared according to Ohio law and is based on accounting for certain transactions on a basis of cash receipts, disbursements and encumbrances. The most significant budgeted fund is the General Fund.

During the course of fiscal year 2021, the District amended its general fund budget. The District uses site-based budgeting and the budgeting systems are designed to tightly control total site budgets but provide flexibility for site management. During the course of the year, the District revised the Budget in an attempt to deal with unexpected changes in revenues and expenditures.

For the General Fund, final budget basis revenue was \$27,670,409, compared to original budget estimates of \$26,939,192.

Capital Assets and Debt Administration

Capital Assets

At the end of fiscal year 2021, the District had \$44,251,115 invested in land, construction in progress, buildings and improvements and equipment. Table 4 shows fiscal year 2021 balances compared to fiscal year 2020:

Wyoming City School District
Management’s Discussion and Analysis
For the Fiscal Year Ended June 30, 2021
(Unaudited)

Table 4
Capital Assets at June 30
(Net of Depreciation)

	Governmental Activities	
	2021	2020
Land	\$629,493	\$629,493
Construction in Progress	148,275	1,862,684
Buildings and Improvements	42,483,738	40,324,730
Equipment	989,609	754,005
Total Net Capital Assets	<u>\$44,251,115</u>	<u>\$43,570,912</u>

The increase in capital assets is due to current year additions exceeding current year depreciation. See Note 6 in the notes to the basic financial statements for further details on the District’s capital assets.

Debt

At June 30, 2021, the District had \$33,708,758 in bonds and capital leases payable, \$2,198,100 due within one year. Table 5 summarizes outstanding debt at year end.

Table 5
Outstanding Debt, at Year End

	Governmental Activities	
	2021	2020
General Obligation Bonds:		
2017 Refunding Bonds	\$17,905,000	\$18,005,000
Premium on Refunding Bonds	2,548,817	2,552,194
2017 Capital Appreciation Bond - Premium	340,000	340,000
Accretion of Interest	123,180	83,235
2013 General Obligation Bonds	5,180,000	5,405,000
Premium on General Obligation Bonds	616,010	667,344
2016 Refunding Bonds	5,625,000	7,175,000
2016 Refunding Bonds - Premium	526,951	658,688
Capital Leases	<u>843,800</u>	<u>988,900</u>
Total Outstanding Debt at Year End	<u>\$33,708,758</u>	<u>\$35,875,361</u>

See Notes 7-9 in the notes to the basic financial statements for further details on the District’s outstanding debt.

For the Future

Wyoming City Schools remains concerned about the future of State funding for public schools in Ohio. The Ohio General Assembly recently adopted the Fair School Funding Plan (FSFP) which is currently estimated to be phased in over the next 6 years. Political and economic pressure at the State continue to impact State funding and the uncertainty of new funding models every two years is challenging to our planning. The District will continue to advocate for additional state resources while diligently reviewing expenditures.

**Wyoming City School District
Management's Discussion and Analysis
For the Fiscal Year Ended June 30, 2021
(Unaudited)**

Contacting the District's Financial Management

This financial report is designed to provide our citizens, taxpayers, and investors and creditors with a general overview of the District's finances and to show the District's accountability for the money it receives. If you have questions about this report or need additional financial information, contact the Treasurer at Wyoming City School District, 420 Springfield Pike, Wyoming, Ohio 45215.

Wyoming City School District
Statement of Net Position
June 30, 2021

	Governmental Activities
Assets:	
Equity in Pooled Cash and Investments	\$12,978,427
Receivables (Net):	
Taxes	19,297,204
Accounts	7,999
Interest	12,401
Intergovernmental	88,156
Nondepreciable Capital Assets	777,768
Depreciable Capital Assets, Net	43,473,347
Net OPEB Asset	1,996,156
Total Assets	78,631,458
Deferred Outflows of Resources:	
Deferred Charge on Refunding	1,444,280
Pension	5,942,059
OPEB	944,485
Total Deferred Outflows of Resources	8,330,824
Liabilities:	
Accounts Payable	231,597
Accrued Wages and Benefits	2,877,928
Contracts Payable	3,947
Accrued Interest Payable	106,297
Long-Term Liabilities:	
Due Within One Year	2,456,229
Due In More Than One Year	
Net Pension Liability	33,745,216
Net OPEB Liability	2,121,609
Other Amounts	33,102,271
Total Liabilities	74,645,094
Deferred Inflows of Resources:	
Property Taxes	8,477,554
OPEB	3,689,108
Pension	691,252
Total Deferred Inflows of Resources	12,857,914
Net Position:	
Net Investment in Capital Assets	11,863,457
Restricted for:	
Debt Service	4,877,164
Capital Projects	1,278,862
Student Activity	319,341
Federal Grants	4,337
State Grants	101,420
Other Purposes	19,444
Unrestricted	(19,004,751)
Total Net Position	(\$540,726)

See accompanying notes to the basic financial statements.

Wyoming City School District
Statement of Activities
For the Fiscal Year Ended June 30, 2021

	Expenses	Program Revenues			Net (Expense) Revenue
		Charges for Services and Sales	Operating Grants and Contributions	Capital Grants and Contributions	and Changes in Net Position Governmental Activities
Governmental Activities:					
Instruction:					
Regular	\$16,596,988	\$563,377	\$543,322	\$329,000	(\$15,161,289)
Special	3,472,134	73,816	729,736	0	(2,668,582)
Vocational	0	0	8,090	0	8,090
Other	6,947	162,205	0	0	155,258
Support Services:					
Pupil	2,513,217	0	258,587	0	(2,254,630)
Instructional Staff	1,526,006	7,242	72,910	0	(1,445,854)
General Administration	57,388	0	0	0	(57,388)
School Administration	2,291,784	0	0	0	(2,291,784)
Fiscal	1,196,080	0	0	0	(1,196,080)
Business	182,757	0	0	0	(182,757)
Operations and Maintenance	2,089,897	118,304	108,424	0	(1,863,169)
Pupil Transportation	494,215	0	16,656	0	(477,559)
Central	181,416	0	0	0	(181,416)
Operation of Non-Instructional Services	150,446	0	812	0	(149,634)
Extracurricular Activities	1,104,404	182,918	0	134,645	(786,841)
Interest and Fiscal Charges	1,262,253	0	0	0	(1,262,253)
Totals	\$33,125,932	\$1,107,862	\$1,738,537	\$463,645	(29,815,888)
General Revenues:					
Income Taxes					9,485,240
Property Taxes Levied for:					
General Purposes					15,252,997
Debt Service Purposes					3,875,449
Capital Projects Purposes					1,169,946
Grants and Entitlements, Not Restricted					6,939,026
Unrestricted Contributions					87,240
Investment Earnings					39,266
Other Revenues					430,188
Total General Revenues					37,279,352
Change in Net Position					7,463,464
Net Position - Beginning of Year, Restated					(8,004,190)
Net Position - End of Year					(\$540,726)

See accompanying notes to the basic financial statements.

Wyoming City School District
Balance Sheet
Governmental Funds
June 30, 2021

	General	Debt Service	Other Governmental Funds	Total Governmental Funds
Assets:				
Equity in Pooled Cash and Investments	\$8,104,900	\$3,529,573	\$1,343,954	\$12,978,427
Receivables (Net):				
Taxes	15,090,599	3,262,424	944,181	19,297,204
Accounts	7,239	0	760	7,999
Interest	12,401	0	0	12,401
Intergovernmental	0	0	88,156	88,156
Interfund	123,385	0	4,029	127,414
Total Assets	23,338,524	6,791,997	2,381,080	32,511,601
Liabilities:				
Accounts Payable	180,281	0	51,316	231,597
Accrued Wages and Benefits	2,847,900	0	30,028	2,877,928
Contracts Payable	3,947	0	0	3,947
Interfund Payable	0	0	127,414	127,414
Total Liabilities	3,032,128	0	208,758	3,240,886
Deferred Inflows of Resources:				
Property Taxes	6,527,236	1,912,424	544,181	8,983,841
Grants and Other Taxes	0	0	88,156	88,156
Investment Earnings	10,541	0	0	10,541
Total Deferred Inflows of Resources	6,537,777	1,912,424	632,337	9,082,538
Fund Balances:				
Restricted	0	4,879,573	1,689,511	6,569,084
Assigned	658,502	0	0	658,502
Unassigned	13,110,117	0	(149,526)	12,960,591
Total Fund Balances	13,768,619	4,879,573	1,539,985	20,188,177
Total Liabilities, Deferred Inflows and Fund Balances	\$23,338,524	\$6,791,997	\$2,381,080	\$32,511,601

See accompanying notes to the basic financial statements.

Wyoming City School District
 Reconciliation of Total Governmental Fund Balance to
 Net Position of Governmental Activities
 June 30, 2021

Total Governmental Fund Balance		\$20,188,177
Amounts reported for governmental activities in the statement of net position are different because:		
Capital assets used in governmental activities are not financial resources and, therefore, are not reported in the funds.		
Capital assets used in the operation of Governmental Funds		44,251,115
Other long-term assets are not available to pay for current-period expenditures and, therefore, are deferred in the funds.		
Delinquent Property Taxes	506,287	
Interest	10,541	
Intergovernmental	<u>88,156</u>	
		604,984
In the statement of net position interest payable is accrued when incurred; whereas, in the governmental funds interest is reported as a liability only when it will require the use of current financial resources.		
		(106,297)
Some liabilities reported in the statement of net position do not require the use of current financial resources and, therefore, are not reported as liabilities in governmental funds.		
Compensated Absences		(1,849,742)
Deferred charge on refunding associated with long-term liabilities that are not reported in the funds.		
		1,444,280
Deferred outflows and inflows for resources related to pensions and OPEB are applicable to future periods and, therefore, are not reported in the funds.		
Deferred outflows of resources related to pensions	5,942,059	
Deferred inflows of resources related to pensions	(691,252)	
Deferred outflows of resources related to OPEB	944,485	
Deferred inflows of resources related to OPEB	<u>(3,689,108)</u>	
		2,506,184
Long-term liabilities and net OPEB assets are not available to pay for current period expenditures and are not due and payable in the current period and, therefore, are not reported in the funds.		
Net OPEB Asset	1,996,156	
Net Pension Liability	(33,745,216)	
Net OPEB Liability	(2,121,609)	
Other Amounts	<u>(33,708,758)</u>	
		<u>(67,579,427)</u>
Net Position of Governmental Activities		<u><u>(\$540,726)</u></u>

See accompanying notes to the basic financial statements.

Wyoming City School District
Statement of Revenues, Expenditures
and Changes in Fund Balance
Governmental Funds
For the Fiscal Year Ended June 30, 2021

	General	Debt Service	Other Governmental Funds	Total Governmental Funds
Revenues:				
Property and Other Taxes	\$15,198,381	\$3,854,319	\$1,166,123	\$20,218,823
Income Taxes	9,485,240	0	0	9,485,240
Tuition and Fees	798,774	0	0	798,774
Investment Earnings	28,633	0	11,783	40,416
Intergovernmental	7,113,976	411,390	1,079,881	8,605,247
Extracurricular Activities	23,132	0	160,392	183,524
Charges for Services	0	0	7,242	7,242
Donations	550,885	0	0	550,885
Other Revenues	318,397	0	230,113	548,510
Total Revenues	33,517,418	4,265,709	2,655,534	40,438,661
Expenditures:				
Current:				
Instruction:				
Regular	14,313,880	0	417,381	14,731,261
Special	3,060,780	0	213,969	3,274,749
Other	6,364	0	0	6,364
Support Services:				
Pupil	2,159,761	0	201,964	2,361,725
Instructional Staff	1,151,070	0	104,068	1,255,138
General Administration	56,411	0	0	56,411
School Administration	2,043,555	0	0	2,043,555
Fiscal	1,096,840	34,467	10,574	1,141,881
Business	165,754	0	0	165,754
Operations and Maintenance	1,712,138	0	118,573	1,830,711
Pupil Transportation	377,439	0	1,000	378,439
Central	152,453	0	0	152,453
Operation of Non-Instructional Services	45,284	0	1,225	46,509
Extracurricular Activities	558,898	0	397,021	955,919
Capital Outlay	2,091,468	0	542,835	2,634,303
Debt Service:				
Principal Retirement	145,100	1,875,000	0	2,020,100
Interest and Fiscal Charges	40,856	1,296,275	0	1,337,131
Total Expenditures	29,178,051	3,205,742	2,008,610	34,392,403
Net Change in Fund Balance	4,339,367	1,059,967	646,924	6,046,258
Fund Balance - Beginning of Year, Restated	9,429,252	3,819,606	893,061	14,141,919
Fund Balance - End of Year	\$13,768,619	\$4,879,573	\$1,539,985	\$20,188,177

See accompanying notes to the basic financial statements.

Wyoming City School District
 Reconciliation of the Statement of Revenues, Expenditures, and Changes
 in Fund Balance of Governmental Funds to the Statement of Activities
 For the Fiscal Year Ended June 30, 2021

Net Change in Fund Balance - Total Governmental Funds \$6,046,258

Amounts reported for governmental activities in the
 statement of activities are different because:

Governmental funds report capital asset additions as expenditures.
 However, in the statement of activities, the cost of those assets is
 allocated over their estimated useful lives as depreciation
 expense. This is the amount of the difference between capital
 asset additions and depreciation in the current period.

Capital assets used in governmental activities	2,334,496	
Depreciation Expense	<u>(1,654,293)</u>	
		680,203

Governmental funds report district pension and OPEB contributions as
 expenditures. However in the Statement of Activities, the cost
 of pension and OPEB benefits earned net of employer contributions are
 reported as pension and OPEB expense.

District pension contributions	2,385,691	
Pension expense	(4,085,925)	
District OPEB contributions	58,924	
OPEB expense	<u>162,732</u>	
		(1,478,578)

Revenues in the statement of activities that do not provide
 current financial resources are not reported as revenues in
 the funds.

Delinquent Property Taxes	79,569	
Interest	(1,150)	
Intergovernmental	<u>72,316</u>	
		150,735

Repayment of bond and capital lease principal along with accreted interest payments
 is an expenditure in the governmental funds, but the repayment reduces long-term
 liabilities in the statement of net position. 2,020,100

In the statement of activities interest expense is accrued when incurred;
 whereas, in governmental funds an interest expenditure is reported
 when due. 3,685

Some expenses reported in the statement of activities do not require the
 use of current financial resources and, therefore, are not reported as
 expenditures in governmental funds.

Compensated Absences	(30,132)	
Amortization of Bond Premium	186,448	
Amortization of Deferred Charge on Refunding	(75,310)	
Bond Accretion	<u>(39,945)</u>	
		<u>41,061</u>

Change in Net Position of Governmental Activities \$7,463,464

See accompanying notes to the basic financial statements.

Wyoming City School District
Statement of Changes in Fiduciary Net Position
Fiduciary Fund
For the Fiscal Year Ended June 30, 2021

	Custodial Fund
Additions:	
Extracurricular Collections for OHSAA	<u>\$1,192</u>
Total Additions	<u>1,192</u>
Deductions:	
Extracurricular Distributions to OHSAA	<u>1,192</u>
Total Deductions	<u>1,192</u>
Change in Net Position	0
Net Position - Beginning of Year, Restated	<u>0</u>
Net Position - End of Year	<u>\$0</u>

See accompanying notes to the basic financial statements.

Wyoming City School District
Notes to the Basic Financial Statements
For the Fiscal Year Ended June 30, 2021

Note 1 – Description of the District

The Wyoming City School District (“District”) was chartered by the Ohio State Legislature in 1832 when state laws were enacted to create local Boards of Education. Today, the District operates under current standards prescribed by the Ohio State Board of Education as provided in division (D) of Section 3301.07 and Section 119.01 of the Ohio Revised Code.

The District operates under a locally elected 5 member Board form of government and provides educational services as authorized by its charter or further mandated by state and/or federal agencies. This Board controls the District's instructional and support facilities staffed by approximately 52 non-certificated personnel and approximately 170 certificated full time teaching and administrative personnel to provide services to students and other community members.

The District currently operates 3 primary schools (grades K-4), 1 middle school (grades 5-8), and 1 high school (grades 9-12).

Reporting Entity

In accordance with Governmental Accounting Standards Board [GASB] Statement 14, as amended by GASB Statement 39 and GASB Statement 61, the financial reporting entity consists of a primary government. The District is a primary government because it is a special-purpose government that has a separately elected governing body, is legally separate, and is fiscally independent of other state and local governments.

There are no component units combined with the District for financial statement presentation purposes, and it is not included in any other governmental reporting entity. Consequently, the District's financial statements include only the funds of those organizational entities for which its elected governing body is financially accountable. The District's major operations include education, pupil transportation, food service, and maintenance of District facilities.

The District is associated with three organizations that are defined as jointly governed organizations. These organizations include Great Oaks Career Campuses, the Hamilton/Clermont Cooperative Information Technology Center, and the Southwest Ohio Computer Association. These organizations are presented in Note 14.

Note 2 – Summary of Significant Accounting Policies

The financial statements of the District have been prepared in conformity with generally accepted accounting principles (GAAP) as applied to governmental units. The Governmental Accounting Standards Board (GASB) is the accepted standard-setting body for establishing governmental accounting and financial reporting principles. The most significant of the District's accounting policies are described below.

Measurement Focus

Government-wide Financial Statements

The District's basic financial statements consist of government-wide statements, including a statement of net position and a statement of activities, and fund financial statements, which provide a more detailed level of financial information.

Wyoming City School District
Notes to the Basic Financial Statements
For the Fiscal Year Ended June 30, 2021

The government-wide statements are prepared using the economic resources measurement focus. All assets, deferred outflows of resources, liabilities and deferred inflows of resources associated with the operation of the District are included on the statement of net position. Fiduciary Funds are not included in entity-wide statements.

The government-wide statement of activities presents a comparison between direct expenses and program revenues for each function or program of the District's governmental activities. Direct expenses are those that are specifically associated with a service, program or department and therefore clearly identifiable to a particular function. Program revenues include charges paid by the recipient of the goods or services offered by the program and contributions that are restricted to meeting the operational or capital requirements of a particular program. Revenues which are not classified as program revenues are presented as general revenues of the District, with certain limited exceptions. The comparison of direct expenses with program revenues identifies the extent to which each governmental function is self-financing or draws from the general revenues of the District.

Fund Financial Statements

All governmental funds are accounted for using a flow of current financial resources measurement focus. With this measurement focus, only current assets and current liabilities and deferred inflows of resources generally are included on the balance sheet. The statement of revenues, expenditures and changes in fund balances reports on the sources (i.e., revenues and other financing sources) and uses (i.e., expenditures and other financing uses) of current financial resources. This approach differs from the manner in which the governmental activities of the government-wide financial statements are prepared. Governmental fund financial statements therefore include reconciliation with brief explanations to better identify the relationship between the government-wide statements and the statements for governmental funds.

Fund Accounting

The District uses funds to maintain its financial records during the fiscal year. Fund accounting is designed to demonstrate legal compliance and to aid management by segregating transactions related to certain District functions or activities. A fund is defined as a fiscal and accounting entity with a self-balancing set of accounts. The various funds of the District are grouped into the categories governmental and fiduciary.

Governmental Funds

Governmental funds focus on the sources, uses and balances of current financial resources. Expendable assets are assigned to the various governmental funds according to the purposes for which they may or must be used. Current liabilities are assigned to the fund from which they will be paid. The difference between governmental fund assets and deferred outflows of resources, and liabilities and deferred inflows of resources is reported as fund balance. The following are the District's major governmental funds:

General Fund - The general fund is used to account for all financial resources except those required to be accounted for in another fund. The general fund balance is available for any purpose provided it is expended or transferred according to the general laws of Ohio.

Wyoming City School District
Notes to the Basic Financial Statements
For the Fiscal Year Ended June 30, 2021

Debt Service Fund – The debt service fund is used to account for the accumulation of resources for the payment of general obligation bond principal and interest and certain other long-term obligations from governmental resources when the District is obligated in some manner for the payment.

Fiduciary Funds

Fiduciary fund reporting focuses on net position and changes in net position. The fiduciary fund category is split into four classifications: pension trust funds, investment trust funds, private purpose trust funds and custodial funds. The District has a custodial fund which accounts for activities related to the OHSAA.

Basis of Accounting

Basis of accounting determines when transactions are recorded in the financial records and reported on the financial statements. Government-wide financial statements are prepared using the accrual basis of accounting. Governmental funds use the modified accrual basis of accounting. Fiduciary funds also use the accrual basis of accounting. Differences in the actual and the modified accrual basis of accounting arise in the recognition of revenue, the recording of deferred outflows and inflows, and in the presentation of expenses versus expenditures.

Revenues – Exchange and Non-exchange Transactions

Revenue resulting from exchange transactions, in which each party gives and receives essentially equal value, is recorded on the accrual basis when the exchange takes place. On a modified accrual basis, revenue is recorded in the fiscal year in which the resources are measurable and become available. Available means that the resources will be collected within the current fiscal year or are expected to be collected soon enough thereafter to be used to pay liabilities of the current fiscal year. For the District, available means expected to be received within sixty days of fiscal year end.

Nonexchange transactions, in which the District receives value without directly giving equal value in return, included property taxes, grants, entitlements and donations. On an accrual basis, revenue from property taxes is recognized in the fiscal year for which the taxes are levied. Revenue from grants, entitlements and donations is recognized in the fiscal year in which all eligibility requirements have been satisfied. Eligibility requirements include timing requirements, which specify the year when the resources are required to be used or the year when use is first permitted, matching requirements, in which the District must provide local resources to be used for a specified purpose, and expenditure requirements, in which the resources are provided to the District on a reimbursement basis. On a modified accrual basis, revenue from nonexchange transactions must also be available before it can be recognized.

Under the modified accrual basis, the following revenue sources are considered to be both measurable and available at year end: property taxes available for advance, grants and interest.

Deferred Outflows/Inflows of Resources

In addition to assets, the statements of financial position will sometimes report a separate section for deferred outflows of resources. Deferred outflows of resources, represents a consumption of net position that applies to a future period and will not be recognized as an

Wyoming City School District
Notes to the Basic Financial Statements
For the Fiscal Year Ended June 30, 2021

outflow of resources (expense/expenditure) until then. For the District, deferred outflows of resources include pension, other post employment benefits, and a deferred charge on refunding. The deferred outflows of resources related to a deferred charge on refunding are recorded on the governmental-wide statement of net position. The deferred outflows related to pension and OPEB plans are reported on the governmental-wide statement of net position and are explained in Notes 10 and 11.

In addition to liabilities, the statements of financial position report a separate section for deferred inflows of resources. Deferred inflows of resources represent an acquisition of net position that applies to a future period and will not be recognized as an inflow of resources (revenue) until that time. For the District, deferred inflows of resources include property taxes, OPEB, pension, grants and other taxes, and investment earnings. Property taxes represent amounts for which there is an enforceable legal claim as of June 30, 2021, but which were levied to finance year 2022 operations. These amounts have been recorded as deferred inflows on both the government-wide statement of net position and the governmental fund financial statements. Deferred inflows of resources related to grants, and other taxes and investment earnings are reported as deferred inflows on the governmental fund financial statements. Deferred Inflows related to pension and OPEB plans are reported on the government-wide statement of net position. For more pension and OPEB related information, see Notes 10 and 11.

Expenses/Expenditures

On the accrual basis of accounting, expenses are recognized at the time they are incurred. The fair value of donated commodities used during the year is reported in the operating statement as an expense with a like amount reported as donated commodities revenue.

The measurement focus of governmental fund accounting is on decreases in net financial resources (expenditures) rather than expenses. Expenditures are generally recognized in the accounting period in which the related fund liability is incurred, if measurable. Allocations of cost, such as depreciation and amortization, are not recognized in the governmental funds.

Equity in Pooled Cash and Investments

Cash received by the District is pooled for investment purposes. Interest in the pool is presented as "Equity in Pooled Cash and Investments" on the financial statements. The District utilizes a financial institution to service bonded debt as principal and interest payments come due. The balance in this account is presented on the financial statements as "Equity in Pooled Cash and Investments".

Except for nonparticipating investment contracts, investments are reported at fair value which is based on quoted market prices. Nonparticipating investment contracts such as nonnegotiable certificates of deposits and repurchase agreements are reported at cost.

Following Ohio statutes, the Board has, by resolution, specified the funds to receive an allocation of interest earnings. Interest revenue credited to the general fund amounted to \$28,633 and \$11,783 credited to other governmental funds.

Capital Assets

General capital assets are those assets not specifically related to activities reported in the proprietary funds. These assets generally result from expenditures in the governmental funds. These assets are reported in the governmental activities column of the government-wide statement of net position but

Wyoming City School District
Notes to the Basic Financial Statements
For the Fiscal Year Ended June 30, 2021

are not reported in the fund financial statements.

All capital assets are capitalized at cost (or estimated historical cost) and updated for additions and retirements during the year. Donated capital assets, donated works of art and similar items, and capital assets received in a service concession arrangement should be reported at acquisition value rather than fair value. The District maintains a capitalization threshold of five thousand dollars (\$5,000). The District does not possess any infrastructure. Improvements are capitalized; the costs of normal maintenance and repairs that do not add to the value of the asset or materially extend an asset's life are not. Interest incurred during the construction of capital assets is also capitalized.

All reported capital assets are depreciated, except land and construction in progress. Improvements are depreciated over the remaining useful lives of the related capital assets. Depreciation is allocated using the straight-line method over the following useful lives:

<u>Description</u>	<u>Estimated Lives</u>
Buildings and Improvements	20 years
Equipment	5 - 20 years

Compensated Absences

The District reports compensated absences in accordance with the provisions of GASB Statement No. 16, "Accounting for Compensated Absences." Vacation benefits are accrued as a liability as the benefits are earned if the employees' rights to receive compensation are attributable to services already rendered and it is probable that the District will compensate the employees for the benefits through paid time off or some other means. The District records a liability for accumulated unused vacation time, when earned, for all employees with more than one year of service.

Sick leave benefits are accrued as a liability using the vesting method. The entire compensated absence liability is reported on the government-wide financial statements.

For governmental fund financial statements, the current portion of unpaid compensated absences is due and payable. These amounts are recorded in the account "compensated absences payable" in the fund from which the employees who have accumulated unpaid leave are paid. Compensated absences are reported in governmental funds only if they have matured.

Pensions/Other Postemployment Benefits (OPEB)

For purposes of measuring the net pension/OPEB liability, deferred outflows of resources and deferred inflows of resources related to pensions/OPEB, and pension/OPEB expense, information about the fiduciary net position of the pension/OPEB plans and additions to/deductions from their fiduciary net position have been determined on the same basis as they are reported by the pension/OPEB plan. For this purpose, benefit payments (including refunds of employee contributions) are recognized when due and payable in accordance with the benefit terms. The pension/OPEB plans report investments at fair value.

Net Position

Net position represents the difference between assets and deferred outflows of resources, liabilities and deferred inflows of resources. Net investment in capital assets, consists of capital assets, net of

Wyoming City School District
Notes to the Basic Financial Statements
For the Fiscal Year Ended June 30, 2021

accumulated depreciation, reduced by the outstanding balances of any borrowings used for the acquisition, construction or improvement of those assets. Net position is reported as restricted when there are limitations imposed on their use either through the enabling legislation adopted by the District or through external restrictions imposed by creditors, grantors or laws or regulations of other governments.

The District applies restricted resources when an expense is incurred for purposes for which both restricted and unrestricted net position are available. Of the District's \$6,600,568 in restricted net position, none were restricted by enabling legislation.

Interfund Activity

Exchange transactions between funds are reported as revenues in the seller funds and as expenditures/expenses in the purchaser funds. Flows of cash or goods from one fund to another without a requirement for repayment are reported as interfund transfers. Interfund transfers are reported as other financing sources/uses in governmental funds. Repayments from funds responsible for particular expenditures/expenses to the funds that initially paid for them are not presented on the financial statements.

On fund financial statements, receivables and payables resulting from short-term interfund loans are classified as "interfund receivables/payables". These amounts are eliminated in the governmental activities column on the Statement of Net position.

As a general rule the effect of interfund (internal) activity has been eliminated from the government-wide statement of activities. The interfund services provided and used are not eliminated in the process of consolidation.

Fund Balance

In accordance with Governmental Accounting Standards Board Statement No. 54, *Fund Balance Reporting*, the District classifies its fund balance based on the purpose for which the resources were received and the level of constraint placed on the resources. The following categories are used:

Nonspendable – resources that are not in spendable form (inventory) or have legal or contractual requirements to maintain the balance intact.

Restricted – resources that have external purpose restraints imposed on them by providers, such as creditors, grantors, or other regulators.

Committed – resources that are constrained for specific purposes that are internally imposed by the government at its highest level of decision making authority, the Board of Education.

Assigned – resources that are intended to be used for specific purposes as approved through the District's formal purchasing procedure by the Treasurer.

Unassigned – residual fund balance within the General Fund that is not restricted, committed, or assigned. In other governmental funds, the unassigned classification is used only to report a deficit balance resulting from incurred expenses for specific purposes exceeding amounts, which had been restricted, committed or assigned for said purposes.

The District applies restricted resources first when expenditures are incurred for purposes for which either restricted or unrestricted (committed, assigned, and unassigned) amounts are available. Similarly, within unrestricted fund balance, committed amounts are reduced first followed by assigned,

Wyoming City School District
Notes to the Basic Financial Statements
For the Fiscal Year Ended June 30, 2021

and then unassigned amounts when expenditures are incurred for purposes for which amounts in any of the unrestricted fund balance classifications could be used.

Prepaid Items

Payments made to vendors for services that will benefit periods beyond June 30, 2021 are recorded as prepaid items using the consumption method. A current asset for the prepaid amount is recorded at the time of purchase and expenditure/expense is reported in the year in which services are consumed.

Estimates

The preparation of financial statements in conformity with generally accepted accounting principles requires management to make estimates and assumptions that affect the amounts reported in the financial statements and accompanying notes. Actual results may differ from those estimates.

Note 3 – Equity in Pooled Cash and Investments

The District maintains a cash and investment pool used by all funds. Each fund type's portion of this pool is displayed on the combined balance sheet as "Equity in Pooled Cash and Investments."

State statute requires the classification of monies held by the District into three categories:

Active Monies - Those monies required to be kept in a "cash" or "near cash" status for immediate use by the District. Such monies must by law be maintained either as cash in the District treasury, in depository accounts payable or withdrawable on demand.

Inactive Monies – Those monies not required for use within the current two year period of designated depositories. Ohio law permits inactive monies to be deposited or invested as certificates of deposit maturing not later than the end of the current period of designated depositories, or as savings or deposit accounts, including, but not limited to passbook accounts.

Interim Monies – Those monies which are not needed for immediate use but which will be needed before the end of the current period of designation of depositories. Interim monies held by the District can be deposited or invested in the following securities:

1. United States Treasury bills, bonds, notes, or any other obligation or security issued by the United States Treasury, or any other obligation guaranteed as to principal and interest by the United States.
2. Bonds, notes, debentures, or any other obligation or security issued by any federal government agency or instrumentality including, but not limited to, the Federal National Mortgage Association, Federal Home Loan Bank, Federal Farm Credit Bank, Federal Home Loan Mortgage Corporation, and Government National Mortgage Association. All federal agency securities shall be direct issuances of federal government agencies or instrumentalities.
3. Written repurchase agreements in the securities listed above provided the market value of the securities subject to the repurchase agreement must exceed the principal value of the agreement by at least two percent and be marked to market daily, and the term of the agreement must not exceed thirty days.
4. Bonds and other obligations of the State of Ohio, and with certain limitations including a requirement for maturity within ten years from the date of settlement, bonds and other

Wyoming City School District
Notes to the Basic Financial Statements
For the Fiscal Year Ended June 30, 2021

- obligations of political subdivisions of the State of Ohio, if training requirements have been met.
5. Time certificates of deposit or savings or deposit accounts including, but not limited to, passbook accounts.
 6. No-load money market mutual funds consisting exclusively of obligations described in division (1) or (2) and repurchase agreements secured by such obligations, provided that investments in securities described in this division are made only through eligible institutions.
 7. The State Treasurer's investment pool (STAR Ohio).
 8. Certain bankers' acceptances for a period not to exceed one hundred eighty days) and commercial paper notes (for a period not to exceed two hundred seventy days) in an amount not to exceed 40 percent of the interim monies available for investment at any one time if training requirements have been met.

Protection of the District's deposits is provided by the Federal Deposit Insurance Corporation (FDIC), by eligible securities pledged by the financial institution as security for repayment, or by the financial institutions participation in the Ohio Pooled Collateral System (OPCS), a collateral pool of eligible securities deposited with a qualified trustee and pledged to the Treasurer of State to secure the repayment of all public monies deposited in the financial institution.

Investments in stripped principal or interest obligations, reverse repurchase agreements, and derivatives are prohibited. The issuance of taxable notes for the purpose of arbitrage, the use of leverage, and short selling are also prohibited. Except as noted above, an investment must mature within five years from the date of purchase, unless matched to a specific obligation or debt of the District, and must be purchased with the expectation that it will be held to maturity.

Deposits

Custodial credit risk for deposits is the risk that in the event of bank failure, the District will not be able to recover deposits or collateral securities that are in the possession of an outside party. As of June 30, 2021, \$5,224,509 of the District's bank balance of \$5,474,509 was exposed to custodial credit risk because it was uninsured and collateralized.

The District has no deposit policy for custodial risk beyond the requirements of State statute. Ohio law requires that deposits either be insured or be protected by:

Eligible securities pledged to the District and deposited with a qualified trustee by the financial institution as security for repayment whose market value at all times shall be at least 105% of the deposits being secured; or

Participation in the Ohio Pooled Collateral System (OPCS), a collateral pool of eligible securities deposited with a qualified trustee and pledged to the Treasurer of State to secure the repayment of all public monies deposited in the financial institution. OPCS requires the total market value of the securities pledged to be 102% of the deposits being secured or a rate set by the Treasurer of State.

Wyoming City School District
Notes to the Basic Financial Statements
For the Fiscal Year Ended June 30, 2021

Investments

As of June 30, 2021, the District had the following investments:

Investment Type	Value	Fair Value Hierarchy	Weighted Average Maturity (Years)
Money Market Funds	\$38,993	N/A	0.00
Federal Farm Credit Bank	500,066	Level 2	1.69
Commercial Paper	1,523,971	Level 2	0.42
Negotiable CDs	5,037,500	Level 2	1.42
Federal Home Loan Mortgage	501,885	Level 2	3.44
Total Investments	\$7,602,415		
Portfolio Weighted Average Maturity			1.36

The District categorizes its fair value measurements within the fair value hierarchy established by generally accepted accounting principles. The hierarchy is based on the valuation inputs used to measure the fair value of the asset. Level 1 inputs are quoted prices in active markets for identical assets. Level 2 inputs are significant other observable inputs. Level 3 inputs are significant unobservable inputs. The above table identifies the District's recurring fair value measurements as of June 30, 2021.

Interest Rate Risk - In accordance with the investment policy, the District manages its exposure to declines in fair values by limiting the weighted average maturity of its investment portfolio to three years.

Credit Risk – It is the District's policy to limit its investments that are not obligations of the U.S. Government or obligations explicitly guaranteed by the U.S. Government to investments, which have a credit quality rating of the top 2 ratings issued by nationally recognized statistical rating organizations. The District's investments in Federal Farm Credit Bank and Federal Home Loan Mortgage were rated AA+ by Standard & Poor's and Fitch Ratings and Aaa by Moody's Investors Service. Commercial Paper is rated A-1 by Standard & Poor's and P-1 by Moody's. Money Market Funds and Negotiable CD's are not rated.

Concentration of Credit Risk – The District's investment policy allows investments in Federal Agencies or Instrumentalities. The District has invested less than 1% in Money Market Funds, 7% in Federal Farm Credit Bank, 66% in Negotiable CD's, 20% in Commercial Paper, and 7% in Federal Home Loan Mortgage.

Custodial Credit Risk is the risk that in the event of the failure of the counterparty, the District will not be able to recover the value of its investments or collateral securities that are in the possession of an outside party. All of the District's securities are either insured and registered in the name of the District or at least registered in the name of the District.

Note 4 – Property Taxes

Property taxes are levied and assessed on a calendar year basis. Second half distributions occur in a new fiscal year. Property taxes include amounts levied against all real and public utility property located in the District. Real property taxes are levied after April 1 on the assessed value listed as of the prior January 1, the lien date. Public utility property taxes attached as a lien on December 31 of the prior year,

Wyoming City School District
Notes to the Basic Financial Statements
For the Fiscal Year Ended June 30, 2021

were levied April 1 and are collected with real property taxes. Assessed values for real property taxes are established by State law at 35 percent of appraised market value. All property is required to be revalued every six years. Public utility property taxes are assessed on real property at 35 percent of true value.

Real property taxes are payable annually or semi-annually. If paid annually, payment is due December 31; if paid semi-annually, the first payment is due December 31 with the remainder payable by June 20. Under certain circumstances, State statute permits alternate payment dates to be established. If paid annually, payment is due April 30; if paid semi-annually, the first payment is due April 30, with the remainder payable by September 20. The District receives property taxes from Hamilton County. The County Auditor periodically advances to the District its portion of the taxes collected. Second-half real property tax payments collected by the County by June 30, 2021, are available to finance fiscal year 2022 operations. The amount available for advance can vary based on the date the tax bills are sent.

Accrued property taxes receivable represents delinquent taxes outstanding and real property and public utility taxes that became measurable as of June 30, 2021. Although total property tax collections for the next fiscal year are measurable, only the amount available as an advance at June 30 is intended to finance current fiscal year operations. The amount available for advance was \$5,250,000 in the General Fund, \$1,350,000 in the Debt Service Fund, and \$400,000 in Other Governmental Funds.

The assessed values upon which the fiscal year 2021 taxes were collected are:

	<u>Amount</u>
Agricultural/Residential and Other Real Estate	\$343,904,110
Public Utility Personal	<u>5,760,330</u>
Total	<u><u>\$349,664,440</u></u>

Income Tax

The District levies a voted tax of 1.25% for general operations on the income of residents and of estates. The tax was first approved in 1989 at 0.75%. In 1994, the community approved an additional 0.50% income tax. Employers of residents are required to withhold income tax on compensation and remit the tax to the State. Taxpayers are required to file an annual return. The State makes quarterly distributions to the District after withholding amounts for administrative fees and estimated refunds. Income tax revenue is credited to the General Fund.

Note 5 – Receivables

Receivables at June 30, 2021, consisted of taxes, accounts, interest, intergovernmental grants and interfund. All receivables are considered collectible in full due to the ability to foreclose for the nonpayment of taxes, the stable condition of State programs, and the current year guarantee of federal funds.

Wyoming City School District
Notes to the Basic Financial Statements
For the Fiscal Year Ended June 30, 2021

Note 6 – Capital Assets

Capital asset activity for the fiscal year ended June 30, 2021, was as follows:

	Beginning Balance	Additions	Deletions	Ending Balance
Governmental Activities				
<i>Capital Assets, not being depreciated:</i>				
Land	\$629,493	\$0	\$0	\$629,493
Construction in Progress	1,862,684	148,275	1,862,684	148,275
<i>Capital Assets, being depreciated:</i>				
Buildings and Improvements	62,095,211	3,634,532	0	65,729,743
Equipment	3,842,947	414,373	0	4,257,320
Totals at Historical Cost	<u>68,430,335</u>	<u>4,197,180</u>	<u>1,862,684</u>	<u>70,764,831</u>
Less Accumulated Depreciation:				
Buildings and Improvements	21,770,481	1,475,524	0	23,246,005
Equipment	3,088,942	178,769	0	3,267,711
Total Accumulated Depreciation	<u>24,859,423</u>	<u>1,654,293</u>	<u>0</u>	<u>26,513,716</u>
Governmental Activities Capital Assets, Net	<u>\$43,570,912</u>	<u>\$2,542,887</u>	<u>\$1,862,684</u>	<u>\$44,251,115</u>

Depreciation expense was charged to governmental functions as follows:

Instruction:	
Regular	\$829,908
Special	40,753
Support Services:	
Pupil	14,312
Instructional Staff	232,337
School Administration	43,450
Fiscal	14,245
Operations and Maintenance	239,311
Pupil Transportation	113,252
Central	15,528
Operation of Non-Instructional Services	10,760
Extracurricular Activities	100,437
Total Depreciation Expense	<u>\$1,654,293</u>

Wyoming City School District
Notes to the Basic Financial Statements
For the Fiscal Year Ended June 30, 2021

Note 7 – Long-Term Liabilities

	Beginning Balance	Additions	Reductions	Ending Balance	Due In One Year
Bonds:					
General Obligation Bonds:					
2013 General Obligation Bonds	\$5,405,000	\$0	(\$225,000)	\$5,180,000	\$280,000
Premium On General Obligation Bonds	667,344	0	(51,334)	616,010	0
2016 Refunding Bonds	7,175,000	0	(1,550,000)	5,625,000	1,665,000
2016 Refunding Bonds - Premium	658,688	0	(131,737)	526,951	0
2017 Refunding Bonds	18,005,000	0	(100,000)	17,905,000	100,000
2017 Capital Appreciation Bonds-Principal	340,000	0	0	340,000	0
Accretion of Interest	83,235	39,945	0	123,180	0
2017 Refunding Bonds - Premium	2,552,194	0	(3,377)	2,548,817	0
Subtotal Bonds	34,886,461	39,945	(2,061,448)	32,864,958	2,045,000
Capital Leases:					
Lease Purchase Administration Building	579,900	0	(83,100)	496,800	88,100
2011 OASBO Lease	409,000	0	(62,000)	347,000	65,000
Compensated Absences	1,881,746	240,432	(272,436)	1,849,742	258,129
Subtotal Bonds & Other Amounts	37,757,107	280,377	(2,478,984)	35,558,500	2,456,229
Net Pension Liability:					
STRS	25,333,902	2,148,252	0	27,482,154	0
SERS	5,383,063	879,999	0	6,263,062	0
Total Net Pension Liability	30,716,965	3,028,251	0	33,745,216	0
Net OPEB Liability:					
SERS	2,310,176	0	(188,567)	2,121,609	0
Total Net OPEB Liability	2,310,176	0	(188,567)	2,121,609	0
Total Long-term Obligations	<u>\$70,784,248</u>	<u>\$3,308,628</u>	<u>(\$2,667,551)</u>	<u>\$71,425,325</u>	<u>\$2,456,229</u>

General obligation bonds will be paid from the Debt Service Fund. Capital leases will be paid from the General Fund. Compensated absences will be paid from the fund from which the person is paid. Net pension liability and Net OPEB liability represents the long-term portion of the accrued liability associated with STRS and SERS pension liability. These items will be repaid from the funds from which the employees work to whom the liability is associated with or the General Fund if no such funds are available.

This Space Intentionally Left Blank

Wyoming City School District
Notes to the Basic Financial Statements
For the Fiscal Year Ended June 30, 2021

Principal and interest requirements to retire general obligation debt outstanding at year end are as follows:

Fiscal Year Ending June 30	General Obligation Bonds			Capital Appreciation Bonds		
	Principal	Interest	Total	Principal	Interest	Total
2022	\$2,045,000	\$1,233,399	\$3,278,399	0	0	0
2023	2,145,000	1,132,699	3,277,699	0	0	0
2024	2,255,000	1,026,974	3,281,974	0	0	0
2025	825,000	955,150	1,780,150	0	0	0
2026	480,000	930,174	1,410,174	0	0	0
2027-2031	2,870,000	4,384,374	7,254,374	0	0	0
2032-2036	2,125,000	2,366,989	4,491,989	340,000	2,699,024	3,039,024
2037-2041	4,525,000	3,219,733	7,744,733	0	0	0
2042-2046	5,740,000	1,965,626	7,705,626	0	0	0
2047-2050	5,700,000	462,483	6,162,483	0	0	0
Total	\$28,710,000	\$17,677,601	\$46,387,601	\$340,000	\$2,699,024	\$3,039,024

Note 8 – Debt Refunding

On December 20, 2017 the District issued \$18,600,000 in Current Interest Bonds with an interest rate between 2.00% and 5.00% which was used to refund \$18,600,000 of the outstanding 2012 General Obligation Bonds with an interest rate between 2.00% and 5.00%. The net proceeds of \$21,153,444 (after payment of underwriting fees, insurance and other issuance costs) were used to purchase U.S. government securities. Those securities were deposited into an irrevocable trust with an escrow agent to provide all future debt service payments on the bond issues. As a result, \$18,600,000 of the 2012 General Obligation Bonds were considered to be defeased and the related liability for those bonds have been removed from the Statement of Net Position.

The District refunded 2012 General Obligation Bonds to reduce its total debt service payments by \$1,945,914 and to obtain an economic gain (difference between the present value of the debt service payments on the old and new debt) of \$1,007,699.

Note 9 – Capital Leases

The District, in prior years, has entered into two capital leases for buildings.

The leases meet the criteria which defines a capital lease generally as one that transfers benefits and risks of ownership to the leasee. Capital lease payments for the buildings will be made from the General Fund.

In fiscal year 2002, the District into a \$1,500,000 capital lease for an administration building. The lease has an interest rate of 8.75% on \$550,000 (taxable portion), which was paid off on June 1, 2016, and an interest rate of 6.03% on \$950,000 (non-taxable portion), which will be paid off on June 1, 2026.

In fiscal year 2012, the capital lease proceeds that were recorded in the Permanent Improvement Fund relates to the HB264 Energy Improvements for the District. The District is leasing the project from the Columbus Regional Airport Authority. Columbus Regional Airport Authority will retain title to the project during the lease term. Columbus Regional Airport Authority assigned U.S. Bank National Association as

Wyoming City School District
Notes to the Basic Financial Statements
For the Fiscal Year Ended June 30, 2021

trustee. U.S. Bank National Association deposited \$883,000 in the District’s name for the HB264 Energy Improvements. The District made an interest payment to U.S. Bank National Association. The lease is renewable annually and expires on December 1, 2025. The intention of the District is to renew the lease annually. The District began making principal payments in fiscal year 2012. The trustee entered into an Interest Rate Exchange Agreement with respect to the loan, locking in the rate at 3.50% plus an annual administrative fee.

The following is a schedule of the future minimum lease payments required under the capital lease and the present value of the minimum lease payments as of fiscal year end.

Fiscal Year Ending June 30,	Long-Term Debt
2022	\$194,952
2023	194,457
2024	193,916
2025	194,239
2026	193,455
Total Minimum Lease Payments	971,019
Less: Amount Representing Interest	(125,883)
Less: Additional Program Cost Component	(1,336)
Present Value of Minimum Lease Payments	<u>\$843,800</u>

Capital assets acquired under capital leases are as follows:

Buildings and Improvements	\$2,383,000
----------------------------	-------------

Note 10 - Defined Benefit Pension Plans

The Statewide retirement systems provide both pension benefits and other postemployment benefits (OPEB).

Net Pension Liability/Net OPEB Liability (Asset)

Pensions and OPEB are a component of exchange transactions—between an employer and its employees—of salaries and benefits for employee services. Pensions/OPEB are provided to an employee—on a deferred-payment basis—as part of the total compensation package offered by an employer for employee services each financial period.

The net pension/OPEB liability (asset) represent the School District’s proportionate share of each pension/OPEB plan’s collective actuarial present value of projected benefit payments attributable to past periods of service, net of each pension/OPEB plan’s fiduciary net position. The net pension/OPEB liability (asset) calculation is dependent on critical long-term variables, including estimated average life expectancies, earnings on investments, cost of living adjustments and others. While these estimates use the best information available, unknowable future events require adjusting these estimates annually.

Ohio Revised Code limits the School District’s obligation for this liability to annually required payments. The School District cannot control benefit terms or the manner in which pensions/OPEB are financed; however, the School District does receive the benefit of employees’ services in exchange for compensation including pension and OPEB.

Wyoming City School District
Notes to the Basic Financial Statements
For the Fiscal Year Ended June 30, 2021

GASB 68/75 assumes the liability is solely the obligation of the employer, because (1) they benefit from employee services; and (2) State statute requires funding to come from these employers. All pension contributions to date have come solely from these employers (which also includes pension costs paid in the form of withholdings from employees). The retirement systems may allocate a portion of the employer contributions to provide for these OPEB benefits. In addition, health care plan enrollees pay a portion of the health care costs in the form of a monthly premium. State statute requires the retirement systems to amortize unfunded pension liabilities within 30 years. If the pension amortization period exceeds 30 years, each retirement system’s board must propose corrective action to the State legislature. Any resulting legislative change to benefits or funding could significantly affect the net pension/OPEB liability (asset). Resulting adjustments to the net pension/OPEB liability (asset) would be effective when the changes are legally enforceable. The Ohio revised Code permits, but does not require the retirement systems to provide healthcare to eligible benefit recipients.

The remainder of this note includes the required pension disclosures. See Note 11 for the required OPEB disclosures.

Plan Description - School Employees Retirement System (SERS)

Plan Description

District non-teaching employees participate in SERS, a cost-sharing multiple-employer defined benefit pension plan administered by SERS. SERS provides retirement, disability and survivor benefits, and death benefits to plan members and beneficiaries. Authority to establish and amend benefits is provided by Ohio Revised Code Chapter 3309. SERS issues a publicly available, stand-alone financial report that includes financial statements, required supplementary information and detailed information about SERS’ fiduciary net position. That report can be obtained by visiting the SERS website at www.ohsers.org under Employers/Audit Resources.

Age and service requirements for retirement are as follows:

	Eligible to Retire before August 1, 2017 *	Eligible to Retire on or after August 1, 2017
Full Benefits	Any age with 30 years of service credit	Age 67 with 10 years of service credit; or Age 57 with 30 years of service credit
Actuarially Reduced Benefits	Age 60 with 5 years of service credit Age 55 with 25 years of service credit	Age 62 with 10 years of service credit; or Age 60 with 25 years of service credit

* Members with 25 years of service credit as of August 1, 2017, will be included in this plan.

Annual retirement benefits are calculated based on final average salary multiplied by a percentage that varies based on years of service; 2.2 percent for the first thirty years of service and 2.5 percent for years of service credit over 30. Final average salary is the average of the highest three years of salary.

An individual whose benefit effective date is before April 1, 2018, is eligible for a cost of living adjustment (COLA) on the first anniversary date of the benefit. Beginning April 1, 2018, new benefit recipients must wait until the fourth anniversary of their benefit for COLA eligibility. The COLA is added each year to the base benefit amount on the anniversary date of the benefit. A three-year COLA suspension is in effect for all benefit recipients for the years 2018, 2019, and 2020. Upon resumption of the COLA, it will be indexed to the percentage increase in the CPI-W, not to exceed 2.5 percent and with a floor of 0 percent.

Wyoming City School District
Notes to the Basic Financial Statements
For the Fiscal Year Ended June 30, 2021

Changes in Benefits between Measurement Date and the Fiscal Year End

In September 2020, the Board of Trustees approved a 0.5 percent cost-of-living adjustment (COLA) for eligible retirees and beneficiaries in 2021. The effects of these changes are unknown.

Funding Policy

Plan members are required to contribute 10 percent of their annual covered salary and the School District is required to contribute 14 percent of annual covered payroll. The contribution requirements of plan members and employers are established and may be amended by the SERS' Retirement Board up to statutory maximum amounts of 10 percent for plan members and 14 percent for employers. The Retirement Board, acting with the advice of the actuary, allocates the employer contribution rate among four of the System's funds (Pension Trust Fund, Death Benefit Fund, Medicare B Fund, and Health Care Fund). For the fiscal year ended June 30, 2021, the allocation to pension, death benefits, and Medicare B was 14.0 percent. For fiscal year 2021, the Retirement Board did not allocate any employer contribution to the Health Care Fund.

The School District's contractually required contribution to SERS was \$441,503 for fiscal year 2021. Of this amount \$26,210 is reported as accrued wages and benefits.

Plan Description - State Teachers Retirement System (STRS)

Plan Description

School District licensed teachers and other faculty members participate in STRS Ohio, a cost-sharing multiple employer public employee system administered by STRS. STRS provides retirement and disability benefits to members and death and survivor benefits to beneficiaries. STRS issues a stand-alone financial report that includes financial statements, required supplementary information, and detailed information about STRS' fiduciary net position. That report can be obtained by writing to STRS, 275 E. Broad St., Columbus, OH 43215-3771, by calling (888) 227-7877, or by visiting the STRS Web site at www.strsoh.org.

New members have a choice of three retirement plans; a Defined Benefit (DB) Plan, a Defined Contribution (DC) Plan, and a Combined Plan. Benefits are established by Ohio Revised Code Chapter 3307.

The DB plan offers an annual retirement allowance based on final average salary multiplied by a percentage that varies based on years of service. Effective August 1, 2015, the calculation is 2.2 percent of final average salary for the five highest years of earnings multiplied by all years of service. In April 2017, the Retirement Board made the decision to reduce COLA granted on or after July 1, 2017, to 0 percent to preserve the fiscal integrity of the retirement system. Benefit recipients' base benefit and past cost-of living increases are not affected by this change. Eligibility changes will be phased in until August 1, 2026, when retirement eligibility for unreduced benefits will be five year of service credit and age 65, or 35 years of service credit and at least age 60.

Eligibility changes for DB Plan members who retire with actuarially reduced benefits will be phased in until August 1, 2023, when retirement eligibility will be five years of qualifying service credit and age 60, or 30 years of service credit at any age.

The DC Plan allows members to place all their member contributions and 9.53 percent of the 14 percent employer contributions into an investment account. The member determines how to allocate the member and employer money among various investment choices offered by STRS. The remaining 4.47 percent of the 14 percent employer rate is allocated to the defined benefit unfunded liability. A member is eligible to receive a retirement benefit at age 50 and termination of employment. The member may elect to receive a lifetime monthly annuity or a lump sum withdrawal.

Wyoming City School District
Notes to the Basic Financial Statements
For the Fiscal Year Ended June 30, 2021

The Combined Plan offers features of both the DB Plan and the DC Plan. In the Combined Plan, 12 percent of the 14 percent member rate is deposited into the member’s DC account and the remaining 2 percent is applied to the DB Plan. Member contributions to the DC Plan are allocated among investment choices by the member, and contributions to the DB Plan from the employer and the member are used to fund the defined benefit payment at a reduced level from the regular DB Plan. The defined benefit portion of the Combined Plan payment is payable to a member on or after age 60 with five years of service. The defined contribution portion of the account may be taken as a lump sum payment or converted to a lifetime monthly annuity at age fifty and after termination of employment.

New members who choose the DC plan or Combined Plan will have another opportunity to reselect a permanent plan during their fifth year of membership. Members may remain in the same plan or transfer to another STRS plan. The optional annuitization of a member’s defined contribution account or the defined contribution portion of a member’s Combined Plan account to a lifetime benefit results in STRS bearing the risk of investment gain or loss on the account. STRS has therefore included all three plan options as one defined benefit plan for GASB 68 reporting purposes.

A DB or Combined Plan member with five or more years of credited service who is determined to be disabled may qualify for a disability benefit. New members must have at least ten years of qualifying service credit that apply for disability benefits. Members in the DC Plan who become disabled are entitled only to their account balance. Eligible survivors of members who die before service retirement may qualify for monthly benefits. If a member of the DC Plan dies before retirement benefits begin, the member’s designated beneficiary is entitled to receive the member’s account balance.

Funding Policy

Employer and member contribution rates are established by the State Teachers Retirement Board and limited by Chapter 3307 of the Ohio Revised Code. The fiscal year 2021 employer and employee contribution rate of 14 percent was equal to the statutory maximum rates. For fiscal year 2021, the full employer contribution was allocated to pension.

The School District’s contractually required contribution to STRS was \$1,944,188 for fiscal year 2021. Of this amount \$336,988 is reported as accrued wages and benefits.

Net Pension Liabilities, Pension Expense, and Deferred Outflows of Resources and Deferred Inflows of Resources Related to Pensions

The net pension liability was measured as of June 30, 2020, and the total pension liability used to calculate the net pension liability was determined by an actuarial valuation as of that date. The School District's proportion of the net pension liability was based on the School District's share of contributions to the pension plan relative to the contributions of all participating entities. Following is information related to the proportionate share and pension expense:

	<u>SERS</u>	<u>STRS</u>	<u>Total</u>
Proportionate Share of the Net Pension Liability	\$6,263,062	\$27,482,154	\$33,745,216
Proportion of the Net Pension Liability:			
Current Measurement Date	0.09469100%	0.11357932%	
Prior Measurement Date	<u>0.08997000%</u>	<u>0.11455840%</u>	
Change in Proportionate Share	0.00472100%	-0.00097908%	
Pension Expense	\$724,443	\$3,361,482	\$4,085,925

Wyoming City School District
Notes to the Basic Financial Statements
For the Fiscal Year Ended June 30, 2021

At June 30 2021, reported deferred outflows of resources and deferred inflows of resources related to pensions from the following sources:

	SERS	STRS	Total
<u>Deferred Outflows of Resources</u>			
Differences between expected and actual experience	\$12,166	\$61,663	\$73,829
Changes of assumptions	0	1,475,261	1,475,261
Net difference between projected and actual earnings on pension plan investments	397,577	1,336,460	1,734,037
Changes in employer proportionate share of net pension liability	194,688	78,553	273,241
Contributions subsequent to the measurement date	441,503	1,944,188	2,385,691
Total Deferred Outflows of Resources	<u>\$1,045,934</u>	<u>\$4,896,125</u>	<u>\$5,942,059</u>
<u>Deferred Inflows of Resources</u>			
Differences between expected and actual experience	\$0	\$175,730	\$175,730
Changes in employer proportionate share of net pension liability	0	515,522	515,522
Total Deferred Inflows of Resources	<u>\$0</u>	<u>\$691,252</u>	<u>\$691,252</u>

\$2,385,691 reported as deferred outflows of resources related to pension resulting from contributions subsequent to the measurement date will be recognized as a reduction of the net pension liability in the year ending June 30, 2022. Other amounts reported as deferred outflows of resources and deferred inflows of resources related to pension will be recognized in pension expense as follows:

Fiscal Year			
Ending June 30:	SERS	STRS	Total
2022	\$130,723	\$768,050	\$898,773
2023	183,513	218,152	401,665
2024	165,719	707,740	873,459
2025	124,476	566,743	691,219
Total	<u>\$604,431</u>	<u>\$2,260,685</u>	<u>\$2,865,116</u>

Actuarial Assumptions - SERS

SERS' total pension liability was determined by their actuaries in accordance with GASB Statement No. 67, as part of their annual actuarial valuation for each defined benefit retirement plan. Actuarial valuations of an ongoing plan involve estimates of the value of reported amounts (e.g., salaries, credited service) and assumptions about the probability of occurrence of events far into the future (e.g., mortality, disabilities, retirements, employment termination). Actuarially determined amounts are subject to continual review and potential modifications, as actual results are compared with past expectations and new estimates are made about the future.

Projections of benefits for financial reporting purposes are based on the substantive plan (the plan as understood by the employers and plan members) and include the types of benefits provided at the time of each valuation and the historical pattern of sharing benefit costs between the employers and plan members to that point. The projection of benefits for financial reporting purposes does not explicitly incorporate the potential effects of legal or contractual funding limitations.

Wyoming City School District
Notes to the Basic Financial Statements
For the Fiscal Year Ended June 30, 2021

Actuarial calculations reflect a long-term perspective. For a newly hired employee, actuarial calculations will take into account the employee's entire career with the employer and also take into consideration the benefits, if any, paid to the employee after termination of employment until the death of the employee and any applicable contingent annuitant. In many cases actuarial calculations reflect several decades of service with the employer and the payment of benefits after termination.

Key methods and assumptions used in calculating the total pension liability in the latest actuarial valuation, prepared as of June 30, 2020, are presented below:

Inflation	3.00%
Future Salary Increases, including inflation	3.50% - 18.20%
COLA or Ad Hoc COLA	2.50%
Investment Rate of Return	7.50% net of investments expense, including inflation
Actuarial Cost Method	Entry Age Normal (Level Percent of Payroll)

Mortality rates were based on the RP-2014 Blue Collar Mortality Table with fully generational projection and a five year age set-back for both males and females. Mortality among service retired members, and beneficiaries were based upon the RP-2014 Blue Collar Mortality Table with fully generational projection with Scale BB, 120 percent of male rates, and 110 percent of female rates. Mortality among disabled members were based upon the RP-2000 Disabled Mortality Table, 90 percent for male rates and 100 percent for female rates, set back five years is used for the period after disability retirement. The most recent experience study was completed for the five year period ended June 30, 2015.

The long-term return expectation for the Pension Plan Investments has been determined by using a building-block approach and assumes a time horizon, as defined in SERS' Statement of Investment Policy. A forecasted rate of inflation serves as the baseline for the return expectation. Various real return premiums over the baseline inflation rate have been established for each asset class. The long-term expected nominal rate of return has been determined by calculating an arithmetic weighted average of the expected real return premiums for each asset class, adding the projected inflation rate, and adding the expected return from rebalanced uncorrelated asset classes.

Asset Class	Target Allocation	Long-Term Expected Real Rate of Return
Cash	2.00%	1.85%
US Stocks	22.50%	5.75%
Non-US Stocks	22.50%	6.50%
Fixed Income	19.00%	2.85%
Private Equity	12.00%	7.60%
Real Assets	17.00%	6.60%
Multi-Asset Strategies	5.00%	6.65%
Total	100.00%	

Discount Rate

The total pension liability was calculated using the discount rate of 7.50 percent. The projection of cash flows used to determine the discount rate assumed the contributions from employers and from the members would be computed based on contribution requirements as stipulated by State statute. Projected inflows from investment earnings were calculated using the long-term assumed investment

Wyoming City School District
Notes to the Basic Financial Statements
For the Fiscal Year Ended June 30, 2021

rate of return (7.50 percent). Based on those assumptions, the plan’s fiduciary net position was projected to be available to make all future benefit payments of current plan members. Therefore, the long-term expected rate of return on pension plan investments was applied to all periods of projected benefits to determine the total pension liability.

Sensitivity of the Proportionate Share of the Net Pension Liability to Changes in the Discount Rate

Net pension liability is sensitive to changes in the discount rate, and to illustrate the potential impact the following table presents the net pension liability calculated using the discount rate of 7.50 percent, as well as what each plan’s net pension liability would be if it were calculated using a discount rate that is one percentage point lower (6.50 percent), or one percentage point higher (8.50 percent) than the current rate.

	1% Decrease 6.50%	Current Discount Rate 7.50%	1% Increase 8.50%
Proportionate share of the net pension liability	\$8,579,631	\$6,263,062	\$4,319,417

Changes in Actuarial Assumptions between Measurement Date and the Fiscal Year End

Based on a new experience study for the five years ending June 30, 2020, the SERS Board lowered the investment rate of return from 7.50 percent to 7.00 percent, lowered inflation from 3.00 percent to 2.40 percent, reduced wage inflation from 3.50 percent to 3.25 percent, reduced COLA from 2.50 percent to 2.00 percent, along with certain other changes for the actuarial valuation as of June 30, 2021. The effects of these changes are unknown.

Actuarial Assumptions - STRS

Key methods and assumptions used in the latest actuarial valuation, reflecting experience study results used in the July 1, 2020, actuarial valuation are presented below:

Inflation	2.50%
Projected salary increases	12.50% at age 20 to 2.50% at age 65
Investment Rate of Return	7.45%, net of investment expenses, including inflation
Discount Rate of Return	7.45%
Payroll Increases	3.00%
Cost-of-Living Adjustments (COLA)	0%, effective July 1, 2017

Post-retirement mortality rates for healthy retirees are based on the RP-2014 Annuitant Mortality Table with 50 percent of rates through age 69, 70 percent of rates between ages 70 and 79, 90 percent of rates between ages 80 and 84, and 100 percent of rates thereafter, projected forward generationally using mortality improvement scale MP-2016. Pre-retirement mortality rates are based on RP-2014 Employee Mortality Table, projected forward generationally using mortality improvement scale MP-2016. Post-retirement disabled mortality rates are based on the RP-2014 Disabled Mortality Table with 90 percent of rates for males and 100 percent of rates for females, projected forward generationally using mortality improvement scale MP-2016.

Actuarial assumptions used in the July 1 2020, valuation are based on the results of an actuarial experience study for the period July 1, 2011 through June 30, 2016.

Wyoming City School District
Notes to the Basic Financial Statements
For the Fiscal Year Ended June 30, 2021

STRS' investment consultant develops an estimate range for the investment return assumption based on the target allocation adopted by the Retirement Board. The target allocation and long-term expected rate of return for each major asset class are summarized as follows:

Asset Class	Target Allocation	Long-Term Expected Rate of Return *
Domestic Equity	28.00%	7.35%
International Equity	23.00%	7.55%
Alternatives	17.00%	7.09%
Fixed Income	21.00%	3.00%
Real Estate	10.00%	6.00%
Liquidity Reserves	1.00%	2.25%
Total	100.00%	

*10 Year annualized geometric nominal returns, which include the real rate of return and inflation of 2.25%, but does not include investment expenses. Over a 30-year period, STRS' investment consultant indicates that the above target allocations should generate a return above the actuarial rate of return, without net value added by management.

Discount Rate

The discount rate used to measure the total pension liability was 7.45 percent as of June 30, 2020. The projection of cash flows used to determine the discount rate assumes that member and employer contributions will be made at the statutory contribution rates in accordance with rate increases described above. For this purpose, only employer contributions that are intended to fund benefits of current plan members and their beneficiaries are included. Based on those assumptions, STRS' fiduciary net position was projected to be available to make all projected future benefit payments to current plan members as of June 30, 2020. Therefore, the long-term expected rate of return on pension plan investments of 7.45 percent was applied to all periods of projected benefit payment to determine the total pension liability as of June 30, 2020.

Sensitivity of the Proportionate Share of the Net Pension Liability to Changes in the Discount Rate

The following table presents the County's proportionate share of the net pension liability calculated using the current period discount rate assumption of 7.45 percent, as well as what the District's proportionate share of the net pension liability would be if it were calculated using a discount rate that is one-percentage-point lower (6.45 percent) or one-percentage-point higher (8.45 percent) than the current rate:

	1% Decrease 6.45%	Current Discount Rate 7.45%	1% Increase 8.45%
Proportionate share of the net pension liability	\$39,129,803	\$27,482,154	\$17,611,742

Changes in Actuarial Assumptions between Measurement Date and the Fiscal Year End

The STRS Board approved a change in the discount rate from 7.45 percent to 7.00 percent for the June 30, 2021 valuation. The effect on the net pension liability is unknown.

Note 11 - Defined Benefit OPEB Plans

See Note 10 for a description of the net OPEB liability (asset).

Plan Description - School Employees Retirement System (SERS)

Health Care Plan Description

The School District contributes to the SERS Health Care Fund, administered by SERS for non-certificated retirees and their beneficiaries. For GASB 75 purposes, this plan is considered a cost-sharing other postemployment benefit (OPEB) plan. SERS' Health Care Plan provides healthcare benefits to eligible individuals receiving retirement, disability, and survivor benefits, and to their eligible dependents. Members who retire after June 1, 1986, need 10 years of service credit, exclusive of most types of purchased credit, to qualify to participate in SERS' health care coverage. In addition to age and service retirees, disability benefit recipients and beneficiaries who are receiving monthly benefits due to the death of a member or retiree, are eligible for SERS' health care coverage. Most retirees and dependents choosing SERS' health care coverage are over the age of 65 and therefore enrolled in a fully insured Medicare Advantage plan; however, SERS maintains a traditional, self-insured preferred provider organization for its non-Medicare retiree population. For both groups, SERS offers a self-insured prescription drug program. Health care is a benefit that is permitted, not mandated, by statute. The financial report of the Plan is included in the SERS Annual Comprehensive Financial Report which can be obtained on SERS' website at www.ohsers.org under Employers/Audit Resources.

Access to health care for retirees and beneficiaries is permitted in accordance with Section 3309 of the Ohio Revised Code. The Health Care Fund was established and is administered in accordance with Internal Revenue Code Section 105(e). SERS' Retirement Board reserves the right to change or discontinue any health plan or program. Active employee members do not contribute to the Health Care Plan. The SERS Retirement Board established the rules for the premiums paid by the retirees for health care coverage for themselves and their dependents or for their surviving beneficiaries. Premiums vary depending on the plan selected, qualified years of service, Medicare eligibility, and retirement status.

Funding Policy

State statute permits SERS to fund the health care benefits through employer contributions. Each year, after the allocation for statutorily required pensions and benefits, the Retirement Board may allocate the remainder of the employer contribution of 14 percent of covered payroll to the Health Care Fund in accordance with the funding policy. For fiscal year 2021, no allocation was made to health care. An additional health care surcharge on employers is collected for employees earning less than an actuarially determined minimum compensation amount, pro-rated if less than a full year of service credit was earned. For fiscal year 2021, this amount was \$23,000. Statutes provide that no employer shall pay a health care surcharge greater than 2 percent of that employer's SERS-covered payroll; nor may SERS collect in aggregate more than 1.5 percent of the total statewide SERS-covered payroll for the health care surcharge. For fiscal year 2021, the School District's surcharge obligation was \$58,924.

The surcharge, added to the allocated portion of the 14 percent employer contribution rate is the total amount assigned to the Health Care Fund. The School District's contractually required contribution to SERS was \$58,924 for fiscal year 2021.

Plan Description - State Teachers Retirement System (STRS)

Plan Description

The State Teachers Retirement System of Ohio (STRS) administers a cost-sharing Health Plan administered for eligible retirees who participated in the defined benefit or combined pension plans offered by STRS. Ohio law authorizes STRS to offer this plan. Benefits include hospitalization, physicians'

Wyoming City School District
Notes to the Basic Financial Statements
For the Fiscal Year Ended June 30, 2021

fees, prescription drugs and partial reimbursement of monthly Medicare Part B premiums. The Plan is included in the report of STRS which can be obtained by visiting www.strsoh.org or by calling (888) 227-7877.

Funding Policy

Ohio Revised Code Chapter 3307 authorizes STRS to offer the Plan and gives the Retirement Board discretionary authority over how much, if any, of the health care costs will be absorbed by STRS. Active employee members do not contribute to the Health Care Plan. All benefit recipients pay a portion of the health care costs in the form of a monthly premium. Under Ohio law, funding for post-employment health care may be deducted from employer contributions, currently 14 percent of covered payroll. For the fiscal year ended June 30, 2021, STRS did not allocate any employer contributions to post-employment health care.

Net OPEB Liabilities (Assets), OPEB Expense (Income), and Deferred Outflows of Resources and Deferred Inflows of Resources Related to OPEB

The net OPEB liability (asset) was measured as of June 30, 2020, and the total OPEB liability used to calculate the net OPEB liability (asset) was determined by an actuarial valuation as of that date. The School District's proportion of the net OPEB liability (asset) was based on the School District's share of contributions to the respective retirement systems relative to the contributions of all participating entities. Following is information related to the proportionate share:

	<u>SERS</u>	<u>STRS</u>	<u>Total</u>
Proportionate Share of the Net OPEB Liability	\$2,121,609	\$0	\$2,121,609
Proportionate Share of the Net OPEB (Asset)	0	(1,996,156)	(1,996,156)
Proportion of the Net OPEB Liability/Asset:			
Current Measurement Date	0.09762030%	0.11357932%	
Prior Measurement Date	<u>0.09186360%</u>	<u>0.11455840%</u>	
Change in Proportionate Share	0.00575670%	-0.00097908%	
OPEB Expense	(\$27,683)	(\$135,049)	(\$162,732)

At June 30 2021, reported deferred outflows of resources and deferred inflows of resources related to OPEB from the following sources:

	<u>SERS</u>	<u>STRS</u>	<u>Total</u>
<u>Deferred Outflows of Resources</u>			
Differences between expected and actual experience	\$27,865	\$127,905	\$155,770
Changes of assumptions	361,660	32,951	394,611
Net difference between projected and actual earnings on OPEB plan investments	23,906	69,959	93,865
Changes in employer proportionate share of net OPEB liability	210,635	30,680	241,315
Contributions subsequent to the measurement date	<u>58,924</u>	<u>0</u>	<u>58,924</u>
Total Deferred Outflows of Resources	<u>\$682,990</u>	<u>\$261,495</u>	<u>\$944,485</u>
<u>Deferred Inflows of Resources</u>			
Differences between expected and actual experience	\$1,078,986	\$397,606	\$1,476,592
Changes of assumptions	53,438	1,896,014	1,949,452
Changes in employer proportionate share of net OPEB liability	<u>155,047</u>	<u>108,017</u>	<u>263,064</u>
Total Deferred Inflows of Resources	<u>\$1,287,471</u>	<u>\$2,401,637</u>	<u>\$3,689,108</u>

Wyoming City School District
Notes to the Basic Financial Statements
For the Fiscal Year Ended June 30, 2021

\$58,924 reported as deferred outflows of resources related to OPEB resulting from contributions subsequent to the measurement date will be recognized as a reduction of the net OPEB liability (adjustment to net OPEB asset) in the year ending June 30, 2022. Other amounts reported as deferred outflows of resources and deferred inflows of resources related to OPEB will be recognized in OPEB expense as follows:

Fiscal Year			
Ending June 30:	SERS	STRS	Total
2022	(\$149,218)	(\$531,824)	(\$681,042)
2023	(147,489)	(484,471)	(631,960)
2024	(147,770)	(467,860)	(615,630)
2025	(118,647)	(467,824)	(586,471)
2026	(75,030)	(91,477)	(166,507)
Thereafter	<u>(25,251)</u>	<u>(96,686)</u>	<u>(121,937)</u>
Total	<u>(\$663,405)</u>	<u>(\$2,140,142)</u>	<u>(\$2,803,547)</u>

Actuarial Assumptions - SERS

The total OPEB liability is determined by SERS' actuaries in accordance with GASB Statement No. 74, as part of their annual actuarial valuation for each retirement plan. Actuarial valuations of an ongoing plan involve estimates of the value of reported amounts (e.g., salaries, credited service) and assumptions about the probability of occurrence of events far into the future (e.g., mortality, disabilities, retirements, employment terminations). Actuarially determined amounts are subject to continual review and potential modifications, as actual results are compared with past expectations and new estimates are made about the future.

Projections of benefits for financial reporting purposes are based on the substantive plan (the plan as understood by the employers and plan members) and include the types of benefits provided at the time of each valuation and the historical pattern of sharing benefit costs between the employers and plan members to that point. The projection of benefits for financial reporting purposes does not explicitly incorporate the potential effects of legal or contractual funding limitations.

Actuarial calculations reflect a long-term perspective. For a newly hired employee, actuarial calculations will take into account the employee's entire career with the employer and also take into consideration the benefits, if any, paid to the employee after termination of employment until the death of the employee and any applicable contingent annuitant. In many cases, actuarial calculations reflect several decades of service with the employer and the payment of benefits after termination.

Key methods and assumptions used in calculating the total OPEB liability in the latest actuarial valuation date of June 30, 2020, are presented below:

This Space Intentionally Left Blank

Wyoming City School District
Notes to the Basic Financial Statements
For the Fiscal Year Ended June 30, 2021

Inflation	3.00%
Wage Increases	3.50% to 18.20%
Investment Rate of Return	7.50% net of investment expense, including inflation
Municipal Bond Index Rate:	
Measurement Date	2.45%
Prior Measurement Date	3.13%
Single Equivalent Interest Rate, net of plan investment expense, including price inflation:	
Measurement Date	2.63%
Prior Measurement Date	3.22%
Medical Trend Assumption:	
Medicare	5.25% to 4.75%
Pre-Medicare	7.00% to 4.75%

Mortality rates were based on the RP-2014 Blue Collar Mortality Table with fully generational projection and Scale BB, 120 percent of male rates and 110 percent of female rates. RP-2000 Disabled Mortality Table with 90 percent for male rates and 100 percent for female rates set back five years.

The most recent experience study was completed for the five year period ended June 30, 2015.

The long-term expected rate of return on plan assets is reviewed as part of the actuarial five-year experience study. The most recent study covers fiscal years 2010 through 2015, and was adopted by the Board on April 21, 2016. Several factors are considered in evaluating the long-term rate of return assumption including long-term historical data, estimates inherent in current market data, and a log-normal distribution analysis in which best-estimate ranges of expected future real rates of return were developed by the investment consultant for each major asset class. These ranges were combined to produce the long-term expected rate of return, 7.50 percent, by weighting the expected future real rates of return by the target asset allocation percentage and then adding expected inflation. The capital market assumptions developed by the investment consultant are intended for use over a 10-year horizon and may not be useful in setting the long-term rate of return for funding pension plans which covers a longer timeframe. The assumption is intended to be a long-term assumption and is not expected to change absent a significant change in the asset allocation, a change in the inflation assumption, or a fundamental change in the market that alters expected returns in future years.

The target asset allocation and best estimates of arithmetic real rates of return for each major asset class, as used in the June 30, 2015 five-year experience study, are summarized as follows:

<u>Asset Class</u>	<u>Target Allocation</u>	<u>Long-Term Expected Real Rate of Return</u>
Cash	2.00%	1.85%
US Stocks	22.50%	5.75%
Non-US Stocks	22.50%	6.50%
Fixed Income	19.00%	2.85%
Private Equity	12.00%	7.60%
Real Assets	17.00%	6.60%
Multi-Asset Strategies	<u>5.00%</u>	6.65%
Total	<u>100.00%</u>	

Wyoming City School District
Notes to the Basic Financial Statements
For the Fiscal Year Ended June 30, 2021

Discount Rate

The discount rate used to measure the total OPEB liability at June 30, 2020 was 2.63 percent. The discount rate used to measure total OPEB liability at June 30, 2019, was 3.22 percent. The projection of cash flows used to determine the discount rate assumed that contributions will be made from members and the System at the state statute contribution rate of 2.00 percent of projected covered employee payroll each year, which includes a 1.50 percent payroll surcharge and 0.50 percent of contributions from the basic benefits plan. Based on these assumptions, the OPEB plan's fiduciary net position was projected to become insufficient to make future benefit payments during the fiscal year ending June 30, 2025. Therefore, the long-term expected rate of return on OPEB plan assets was used to present value the projected benefit payments through the fiscal year ending June 30, 2024, and the Fidelity General Obligation 20-year Municipal Bond Index rate of 2.45 percent, as of June 30, 2020 (i.e. municipal bond rate), was used to present value the projected benefit payments for the remaining years in the projection. The total present value of projected benefit payments from all years was then used to determine the single rate of return that was used as the discount rate. The projection of future benefit payments for all current plan members was until the benefit payments ran out.

Sensitivity of the Proportionate Share of the Net OPEB Liability to Changes in the Discount Rate and Changes in the Health Care Cost Trend Rates

The net OPEB liability is sensitive to changes in the discount rate and the health care cost trend rate. The following table presents the net OPEB liability of SERS, what SERS' net OPEB liability would be if it were calculated using a discount rate that is 1 percentage point lower (1.63%) and higher (3.63%) than the current discount rate (2.63%). Also shown is what SERS' net OPEB liability would be based on health care cost trend rates that are 1 percentage point lower (6.00% decreasing to 3.75%) and higher (8.00% decreasing to 5.75%) than the current rate.

	1% Decrease (1.63%)	Current Discount Rate (2.63%)	1% Increase (3.63%)
Proportionate share of the net OPEB liability	\$2,596,796	\$2,121,609	\$1,743,835
	1% Decrease (6.00% decreasing to 3.75%)	Current Trend Rate (7.00% decreasing to 4.75%)	1% Increase (8.00% decreasing to 5.75%)
Proportionate share of the net OPEB liability	\$1,670,605	\$2,121,609	\$2,724,715

Changes in Actuarial Assumptions between Measurement Date and the Fiscal Year End

Based on a new experience study for the five years ending June 30, 2020, the SERS Board reduced the wage growth assumption from 3.50 percent to 3.25 percent and increased the health care rate of return from 5.25 percent to 7.00 percent. The effects of these changes are unknown.

Actuarial Assumptions - STRS

Key methods and assumptions used in the latest actuarial valuation, reflecting experience study results used in the June 30, 2020, actuarial valuation are presented below:

Wyoming City School District
Notes to the Basic Financial Statements
For the Fiscal Year Ended June 30, 2021

Inflation	2.50%
Projected salary increases	12.50% at age 20 to 2.50% at age 65
Investment Rate of Return	7.45%, net of investment expenses, including inflation
Payroll Increases	3.00%
Discount Rate of Return	7.45%
Health Care Cost Trends:	
Medical	
Pre-Medicare	5.00% initial, 4% ultimate
Medicare	-6.69% initial, 4% ultimate
Prescription Drug	
Pre-Medicare	6.50% initial, 4% ultimate
Medicare	11.87% initial, 4% ultimate

Projections of benefits include the historical pattern of sharing benefit costs between the employers and retired plan members.

For healthy retirees the mortality rates are based on the RP-2014 Annuitant Mortality Table with 50 percent of rates through age 69, 70 percent of rates between ages 70 and 79, 90 percent of rates between ages 80 and 84, and 100 percent of rates thereafter, projected forward generationally using mortality improvement scale MP-2016. For disabled retirees, mortality rates are based on the RP-2014 Disabled Mortality Table with 90 percent of rates for males and 100 percent of rates for females, projected forward generationally using mortality improvement scale MP-2016.

Actuarial assumptions used in the June 30, 2020, valuation are based on the results of an actuarial experience study for the period July 1, 2011 through June 30, 2016.

Since the prior measurement date, there was no change to the claims costs process. Claim curves were updated to reflect the projected fiscal year ending June 30, 2021 premium based on June 30, 2020 enrollment distribution. The non-Medicare subsidy percentage was increased effective January 1, 2021 from 1.984 percent to 2.055 percent per year of service. The non-Medicare frozen subsidy base premium was increased effective January 1, 2021. The Medicare subsidy percentages were adjusted effective January 1, 2021 to 2.1 percent for the AMA Medicare plan. The Medicare Part B monthly reimbursement elimination date was postponed indefinitely.

STRS' investment consultant develops an estimate range for the investment return assumption based on the target allocation adopted by the Retirement Board. The target allocation and long-term expected rate of return for each major asset class are summarized as follows:

Asset Class	Target Allocation	Long-Term Expected Rate of Return*
Domestic Equity	28.00%	7.35%
International Equity	23.00%	7.55%
Alternatives	17.00%	7.09%
Fixed Income	21.00%	3.00%
Real Estate	10.00%	6.00%
Liquidity Reserves	1.00%	2.25%
Total	100.00%	

*10 Year annualized geometric nominal returns, which include the real rate of return and inflation of 2.25%, but does not include investment expenses. Over a 30-year period, STRS' investment consultant indicates that the above target allocations should generate a return above the actuarial rate of return, without net value added by management.

Wyoming City School District
Notes to the Basic Financial Statements
For the Fiscal Year Ended June 30, 2021

Discount Rate

The discount rate used to measure the total OPEB liability was 7.45 percent as of June 30, 2020. The projection of cash flows used to determine the discount rate assumes STRS continues to allocate no employer contributions to the health care fund. Based on these assumptions, the OPEB plan's fiduciary net position was projected to be available to make all projected future benefit payments to current plan members as of June 30, 2020. Therefore, the long-term expected rate of return on health care plan investments of 7.45 percent was used to measure the total OPEB liability as of June 30, 2020.

Sensitivity of the Proportionate Share of the Net OPEB (Asset) to Changes in the Discount and Health Care Cost Trend Rate

The following table represents the net OPEB asset as of June 30, 2020, calculated using the current period discount rate assumption of 7.45 percent, as well as what the net OPEB asset would be if it were calculated using a discount rate that is one percentage point lower (6.45 percent) or one percentage point higher (8.45 percent) than the current assumption. Also shown is the net OPEB asset as if it were calculated using health care cost trend rates that are one percentage point lower or one percentage point higher than the current health care cost trend rates.

	1% Decrease (6.45%)	Current Discount Rate (7.45%)	1% Increase (8.45%)
Proportionate share of the net OPEB (asset)	(\$1,736,785)	(\$1,996,156)	(\$2,216,221)
	1% Decrease	Current Trend Rate	1% Increase
Proportionate share of the net OPEB (asset)	(\$2,202,561)	(\$1,996,156)	(\$1,744,721)

Note 12 – Contingent Liabilities

School Foundation

District foundation funding for fiscal year 2021 was based on the annualized full-time equivalent (FTE) enrollment of each student. The Ohio Department of Education (ODE) is legislatively required to adjust/reconcile funding as enrollment information is updated by schools throughout the State, which can extend past the fiscal year end. As of the date of this report, additional ODE adjustments for fiscal year 2021 are not finalized. As a result, the impact of future FTE adjustments on the fiscal year 2021 financial statements is not determinable, at this time. Management believes this may result in either an additional receivable to, or a liability of, the District.

Grants

The School District received financial assistance from federal and State agencies in the form of grants. The expenditure of funds received under these programs generally requires compliance with terms and conditions specified in the grant agreements and is subject to audit by the grantor agencies. Any disallowed claims resulting from such audits could become a liability of the General Fund or other applicable funds. This also encompasses the Auditor of State's ongoing review of student attendance data. However, the effect of any such disallowed claims on the overall financial position of the School District at June 30, 2021, if applicable, cannot be determined at this time.

Wyoming City School District
Notes to the Basic Financial Statements
For the Fiscal Year Ended June 30, 2021

Litigation

The District's attorney estimates that there are no potential claims against the District that are not covered by insurance resulting from litigation.

Note 13 – Risk Management

The District is exposed to various risks of loss related to torts; theft or damage to and destruction of assets; errors and omissions; injuries to employees; and natural disasters. During fiscal year 2020, the District contracted with Liberty Mutual for property and fleet insurance, liability insurance, and inland marine coverage. Coverage's provided by Liberty Mutual are as follows:

Building and Contents - Replacement Cost	\$67,020,344
Inland Marine Coverage	1,480,750
Boiler and Machinery	No Limit
Crime Insurance	100,000
Automobile Liability	1,000,000
Uninsured Motorist	1,000,000
General Liability	
Per Occurrence	1,000,000
Aggregate Umbrella Liability	1,000,000
Per Year	3,000,000

Settled claims have not exceeded commercial coverage in any of the past three years. There were no significant reductions in insurance coverage from the prior year.

For fiscal year 2021, the District participated in the Southwestern Ohio Educational Purchasing Council Workers' Compensation Group Rating Program (GRP), an insurance purchasing pool. The intent of the GRP is to achieve the benefit of a reduced premium for the District by virtue of its grouping and representation with other participants in the GRP. The workers' compensation experience of the participating school districts is calculated as one experience and a common premium rate is applied to all school districts in the GRP. Each participant pays its workers' compensation premium to the State based on the rate for the GRP rather than its individual rate. Total savings are then calculated and each participant will then either receive money from or be required to contribute to the "Equity Pooling Fund." This "equity pooling" arrangement insures that each participant shares equally in the overall performance of the GRP. Participation in the GRP is limited to school districts that can meet the GRP's selection criteria. The firm of Sedwick provides administrative, cost control and actuarial services to the GRP.

Note 14 – Jointly Governed Organizations

Great Oaks Career Campuses (Great Oaks), a jointly governed organization, is a distinct political subdivision of the State of Ohio which operates under the direction of a Board consisting of one representative from each participating school district's elected board. The Board possesses its own budgeting and taxing authority. Great Oaks provides academic preparation and job training which leads to employment and/or further education upon graduation from high school. The District has no ongoing financial interest in or responsibility for Great Oaks.

The District is a participant in the Hamilton Clermont Cooperative Information Technology Center (HCC) and the Southwest Ohio Computer Association (SWOCA). HCC is used for student/EMIS and SWOCA is used for finance. These organizations were formed for the purpose of applying modern technology with the aid of computers and other electronic equipment to administrative and instructional functions

Wyoming City School District
Notes to the Basic Financial Statements
For the Fiscal Year Ended June 30, 2021

among member districts.

Note 15 – Claims Servicing Pool

The District participates as one of 14 members of the Greater Cincinnati Insurance Consortium (GCIC), a shared risk pool, comprised of thirteen Hamilton County school districts and the Hamilton County Educational Service Center. Decisions concerning the operation of the consortium are made by a Board of Directors consisting of the Superintendent or a designated representative from each of the 14 GCIC members. GCIC transitioned from a fully insured plan with Anthem Blue Cross and Blue Shield to a self-insured plan in 2007, and now pay premiums based on expected costs developed by an independent actuary. This fund arrangement allows the plan to avoid paying state premium taxes and additional expenses associated with a fully insured plan. The consortium’s financial success since 2007 has been shared with the member districts and their employees by passing on only a portion of the required annual premium increases, if any.

Note 16 – Accountability

The following individual fund had a deficit in fund balance at year end:

<u>Other Governmental Funds</u>	<u>Deficit</u>
Food Service	\$50,389
Title I	25,999
Special Education	38,364
ESSER	34,774

The deficits in fund balances were primarily due to accruals in GAAP. The general fund is liable for any deficit in these funds and will provide operating transfers when cash is required not when accruals occur.

Note 17 – Fund Balance Reserves for Set-Asides

The District is required by State statute to annually set aside in the general fund an amount based on a statutory formula the acquisition and construction of capital improvements. Amounts not spent by year-end or offset by similarly restricted resources received during the year must be held in cash at year-end and carried forward to be used for the same purposes in future years.

The following cash basis information describes the change in the year-end set-aside amounts for capital acquisition. Disclosure of this information is required by State statute.

	<u>Capital Acquisition</u>
Set-aside Reserve Balance as of June 30, 2020	\$0
Current Year Set-aside Requirement	356,085
Qualified Disbursements	(322,325)
Current Year Offsets	(33,760)
Set-aside Reserve Balance as of June 30, 2021	<u>\$0</u>

Wyoming City School District
Notes to the Basic Financial Statements
For the Fiscal Year Ended June 30, 2021

Note 18 – Interfund Transactions

Interfund transactions at June 30, 2021, consisted of the following interfund receivable and interfund payables:

	Interfund	
	Receivable	Payable
General Fund	\$123,385	\$0
Other Governmental Funds	4,029	127,414
Total All Funds	<u>\$127,414</u>	<u>\$127,414</u>

Interfund balance/transfers are used to move revenues from the fund that statute or budget requires to collect them to the fund that statute or budget requires to expend them and unrestricted revenues collected in the general fund to finance various programs accounted for in other funds in accordance with budget authorizations; to segregate and to return money to the fund from which it was originally provided once a project is completed.

Note 19 – Fund Balances

Fund balance is classified as nonspendable, restricted, committed, assigned and/or unassigned based primarily on the extent to which the District is bound to observe constraints imposed upon the use of the resources in the governmental funds. The constraints placed on fund balance for the major governmental funds and all other governmental funds are presented below:

Fund Balances	General	Debt Service	Other Governmental Funds	Total
Restricted for:				
Other Grants	0	0	12,434	12,434
Student Activity	0	0	145,253	145,253
Miscellaneous State Grants	0	0	10,037	10,037
Student Wellness and Success	0	0	91,383	91,383
Student Managed Activity	0	0	174,088	174,088
Private Purpose Trust			7,010	7,010
Debt Service	0	4,879,573	0	4,879,573
Permanent Improvement	0	0	1,249,306	1,249,306
Total Restricted	<u>0</u>	<u>4,879,573</u>	<u>1,689,511</u>	<u>6,569,084</u>
Assigned to:				
Encumbrances	26,248	0	0	26,248
Public School Support	248,878	0	0	248,878
Budgetary Variance	383,376	0	0	383,376
Total Assigned	<u>658,502</u>	<u>0</u>	<u>0</u>	<u>658,502</u>
Unassigned (Deficit)	<u>13,110,117</u>	<u>0</u>	<u>(149,526)</u>	<u>12,960,591</u>
Total Fund Balance	<u>\$13,768,619</u>	<u>\$4,879,573</u>	<u>\$1,539,985</u>	<u>\$20,188,177</u>

Wyoming City School District
Notes to the Basic Financial Statements
For the Fiscal Year Ended June 30, 2021

Note 20 – Implementation of New Accounting Principles and Restatement of Net Position/Fund Balance

New Accounting Principles

For fiscal year 2021, the School District implemented GASB Statement No. 84, Fiduciary Activities and related guidance from (GASB) Implementation Guide No. 2019-2, Fiduciary Activities, and GASB Statement No. 90, Majority Equity Interests – An Amendment of GASB Statements No. 14 and GASB Statements No. 61.

GASB Statement No. 84 established specific criteria for identifying activities that should be reported as fiduciary activities and clarifies whether and how business type activities should report their fiduciary activities. Due to the implementation of GASB Statement No. 84, the School District will no longer be reporting agency funds. The School District reviewed its agency funds and certain funds will be reported in the new fiduciary fund classification of custodial funds, while other funds have been reclassified as governmental funds. If applicable, fund reclassifications resulted in the restatement of the School District’s financial statements.

GASB Statement No. 90 improves consistency in the measurement and comparability of the financial statement presentation of majority equity interests in legally separate organizations. This Statement also provides guidance for reporting a component unit if a government acquires a 100 percent equity interest in that component unit. The implementation of GASB Statement No. 90 did not have an effect on the financial statements of the District.

Restatement of Fund Balance/Net Position

The implementation of GASB 84 had the following effect on fund balance as reported at June 30, 2020:

	Other Governmental Funds
	<u> </u>
Fund Balance, June 30, 2020	\$711,380
Adjustments-Presentation Changes:	
GASB Statement No. 84	<u>181,681</u>
Restated Fund Balance, June 30, 2020	<u><u>\$893,061</u></u>

The implementation of the GASB 84 pronouncement had the following effect on the net position as reported at June 30, 2020:

	Governmental Activities
	<u> </u>
Net Position, June 30, 2020	(\$8,185,871)
Adjustments-Presentation Changes:	
GASB Statement No. 84	<u>181,681</u>
Restated Net Position, June 30, 2020	<u><u>(\$8,004,190)</u></u>

Wyoming City School District
Notes to the Basic Financial Statements
For the Fiscal Year Ended June 30, 2021

Note 21 – COVID-19

The United States and the State of Ohio declared a state of emergency in March of 2020 due to the COVID-19 pandemic. Ohio's state of emergency ended in June of 2021 while the national state of emergency continues. During fiscal year 2021, the District received Coronavirus Aid, Relief, and Economic Security (CARES) Act funding. Additional funding has been made available through the Consolidated Appropriations Act, 2021, passed by Congress on December 21, 2020 and/or the American Rescue Plan Act, passed by Congress on March 11, 2021.

Note 22 – Subsequent Events

For fiscal year 2022, School District foundation funding received from the state of Ohio will be funded using a direct funding model. Under this new model, community school, STEM school and scholarship funding will be directly funded by the State of Ohio to the respective schools. For fiscal year 2021 and prior, the amounts related to students who were residents of the School District were funded to the School District who, in turn, made the payment to the respective school.

REQUIRED SUPPLEMENTARY INFORMATION

Wyoming City School District
 Required Supplementary Information
 Schedule of the District's Proportionate Share of the Net Pension Liability
 School Employees Retirement System of Ohio
 Last Eight Fiscal Years (1) (2)

Year	District's Proportion of the Net Pension Liability	District's Proportionate Share of the Net Pension Liability	District's Covered Payroll	District's Proportionate Share of the Net Pension Liability as a Percentage of its Covered Payroll	Plan Fiduciary Net Position as a Percentage of the Total Pension Liability
2021	0.09469100%	\$6,263,062	\$3,221,407	194.42%	68.55%
2020	0.08997000%	5,383,063	3,086,481	174.41%	70.85%
2019	0.08778010%	5,027,329	2,951,844	170.31%	71.36%
2018	0.09741610%	5,820,397	3,130,093	185.95%	69.50%
2017	0.09992640%	7,313,690	3,103,343	235.67%	62.98%
2016	0.09623300%	5,491,148	3,398,058	161.60%	69.16%
2015	0.09485800%	4,800,709	2,784,242	172.42%	71.70%
2014	0.09485800%	5,642,594	3,579,017	157.66%	65.52%

(1) The schedule is intended to show information for the past 10 years and the additional years' information will be displayed as it becomes available. Information prior to 2014 is not available.

(2) Amounts presented as of the District's measurement date which is the prior fiscal year end.

See accompanying notes to the required supplementary information.

Wyoming City School District
 Required Supplementary Information
 Schedule of the District's Contributions for Net Pension Liability
 School Employees Retirement System of Ohio
 Last Ten Fiscal Years

Year	District's Contractually Required Contribution	District's Contributions in Relation to the Contractually Required Contributions	District's Contribution Deficiency (Excess)	District's Covered Payroll	District's Contributions as a Percentage of Covered Payroll
2021	\$441,503	(\$441,503)	\$0	\$3,153,593	14.00%
2020	450,997	(450,997)	0	3,221,407	14.00%
2019	416,675	(416,675)	0	3,086,481	13.50%
2018	398,499	(398,499)	0	2,951,844	13.50%
2017	438,213	(438,213)	0	3,130,093	14.00%
2016	434,468	(434,468)	0	3,103,343	14.00%
2015	447,864	(447,864)	0	3,398,058	13.18%
2014	385,896	(385,896)	0	2,784,242	13.86%
2013	495,336	(495,336)	0	3,579,017	13.84%
2012	473,376	(473,376)	0	3,519,524	13.45%

See accompanying notes to the required supplementary information.

Wyoming City School District
 Required Supplementary Information
 Schedule of the District's Proportionate Share of the Net Pension Liability
 State Teachers Retirement System of Ohio
 Last Eight Fiscal Years (1) (2)

Year	District's Proportion of the Net Pension Liability	District's Proportionate Share of the Net Pension Liability	District's Covered Payroll	District's Proportionate Share of the Net Pension Liability as a Percentage of its Covered Payroll	Plan Fiduciary Net Position as a Percentage of the Total Pension Liability
2021	0.11357932%	\$27,482,154	\$13,823,400	198.81%	75.48%
2020	0.11455840%	25,333,902	13,690,029	185.05%	77.40%
2019	0.11476514%	25,234,277	13,250,057	190.45%	77.30%
2018	0.11921256%	28,319,199	12,898,629	219.55%	75.30%
2017	0.11787397%	39,455,971	12,761,229	309.19%	66.80%
2016	0.11654307%	32,209,096	12,236,314	263.23%	72.10%
2015	0.11277709%	27,431,291	12,409,062	221.06%	74.70%
2014	0.11277709%	32,587,978	12,878,123	253.05%	69.30%

(1) The schedule is intended to show information for the past 10 years and the additional years' information will be displayed as it becomes available. Information prior to 2014 is not available.

(2) Amounts presented as of the District's measurement date which is the prior fiscal year end.

See accompanying notes to the required supplementary information.

Wyoming City School District
 Required Supplementary Information
 Schedule of the District's Contributions for Net Pension Liability
 State Teachers Retirement System of Ohio
 Last Ten Fiscal Years

Year	District's Contractually Required Contribution	District's Contributions in Relation to the Contractually Required Contributions	District's Contribution Deficiency (Excess)	District's Covered Payroll	District's Contributions as a Percentage of Covered Payroll
2021	\$1,944,188	(\$1,944,188)	\$0	\$13,887,057	14.00%
2020	1,935,276	(1,935,276)	0	13,823,400	14.00%
2019	1,916,604	(1,916,604)	0	13,690,029	14.00%
2018	1,855,008	(1,855,008)	0	13,250,057	14.00%
2017	1,805,808	(1,805,808)	0	12,898,629	14.00%
2016	1,786,572	(1,786,572)	0	12,761,229	14.00%
2015	1,713,084	(1,713,084)	0	12,236,314	14.00%
2014	1,613,178	(1,613,178)	0	12,409,062	13.00%
2013	1,674,156	(1,674,156)	0	12,878,123	13.00%
2012	1,592,976	(1,592,976)	0	12,253,662	13.00%

See accompanying notes to the required supplementary information.

Wyoming City School District
 Required Supplementary Information
 Schedule of the District's Proportionate Share of the Net OPEB Liability
 School Employees Retirement System of Ohio
 Last Five Fiscal Years (1) (2)

Year	District's Proportion of the Net OPEB Liability	District's Proportionate Share of the Net OPEB Liability	District's Covered Payroll	District's Proportionate Share of the Net OPEB Liability as a Percentage of its Covered Payroll	Plan Fiduciary Net Position as a Percentage of the Total OPEB Liability
2021	0.09762030%	\$2,121,609	\$3,221,407	65.86%	18.17%
2020	0.09186360%	2,310,176	3,086,481	74.85%	15.57%
2019	0.08869170%	2,460,547	2,951,844	83.36%	13.57%
2018	0.09858650%	2,645,803	3,130,093	84.53%	12.46%
2017	0.10082433%	2,873,866	3,103,343	92.61%	11.49%

(1) The schedule is intended to show information for the past 10 years and the additional years' information will be displayed as it becomes available. Information prior to 2017 is not available.

(2) Amounts presented as of the District's measurement date which is the prior fiscal year end.

See accompanying notes to the required supplementary information.

Wyoming City School District
 Required Supplementary Information
 Schedule of the District's Contributions for Net OPEB Liability
 School Employees Retirement System of Ohio
 Last Six Fiscal Years (1) (2)

Year	District's Contractually Required Contribution (2)	District's Contributions in Relation to the Contractually Required Contributions	District's Contribution Deficiency (Excess)	District's Covered Payroll	District's Contributions as a Percentage of Covered Payroll
2021	\$58,924	(\$58,924)	0	\$3,153,593	1.87%
2020	59,685	(59,685)	0	3,221,407	1.85%
2019	69,919	(69,919)	0	3,086,481	2.27%
2018	61,070	(61,070)	0	2,951,844	2.07%
2017	52,491	(52,491)	0	3,130,093	1.68%
2016	49,128	(49,128)	0	3,103,343	1.58%

(1) The schedule is intended to show information for the past 10 years and the additional years' information will be displayed as it becomes available. Information prior to 2016 is not available.

(2) Includes surcharge.

See accompanying notes to the required supplementary information.

Wyoming City School District
 Required Supplementary Information
 Schedule of the District's Proportionate Share of the Net OPEB (Asset)/Liability
 State Teachers Retirement System of Ohio
 Last Five Fiscal Years (1) (2)

Year	District's Proportion of the Net OPEB (Asset)/Liability	District's Proportionate Share of the Net OPEB (Asset)/Liability	District's Covered Payroll	District's Proportionate Share of the Net OPEB (Asset)/Liability as a Percentage of its Covered Payroll	Plan Fiduciary Net Position as a Percentage of the Total OPEB (Asset)/Liability
2021	0.11357932%	(\$1,996,156)	\$13,823,400	(14.44%)	182.13%
2020	0.11455840%	(1,897,362)	13,690,029	(13.86%)	174.74%
2019	0.11476514%	(1,844,158)	13,250,057	(13.92%)	176.00%
2018	0.11921256%	4,651,234	12,898,629	36.06%	47.10%
2017	0.11787400%	6,303,933	12,761,229	49.40%	37.30%

(1) The schedule is intended to show information for the past 10 years and the additional years' information will be displayed as it becomes available. Information prior to 2017 is not available.

(2) Amounts presented as of the District's measurement date which is the prior fiscal year end.

See accompanying notes to the required supplementary information.

Wyoming City School District
 Required Supplementary Information
 Schedule of the District's Contributions for Net OPEB (Asset)/Liability
 State Teachers Retirement System of Ohio
 Last Six Fiscal Years (1)

Year	District's Contractually Required Contribution	District's Contributions in Relation to the Contractually Required Contributions	District's Contribution Deficiency (Excess)	District's Covered Payroll	District's Contributions as a Percentage of Covered Payroll
2021	\$0	\$0	\$0	\$13,887,057	0.00%
2020	0	0	0	13,823,400	0.00%
2019	0	0	0	13,690,029	0.00%
2018	0	0	0	13,250,057	0.00%
2017	0	0	0	12,898,629	0.00%
2016	0	0	0	12,761,229	0.00%

(1) The schedule is intended to show information for the past 10 years and the additional years' information will be displayed as it becomes available. Information prior to 2016 is not available.

See accompanying notes to the required supplementary information.

Wyoming City School District
Schedule of Revenues, Expenditures and Changes in Fund Balance
Budget and Actual (Non-GAAP Budgetary Basis)
For the Fiscal Year Ended June 30, 2021

	General Fund			
	Original Budget	Final Budget	Actual	Variance from Final Budget
Revenues:				
Taxes	\$11,036,628	\$11,336,198	\$11,343,381	\$7,183
Income Taxes	7,776,367	7,987,443	7,992,504	5,061
Tuition and Fees	774,840	795,872	796,376	504
Investment Earnings	123,640	126,996	127,076	80
Intergovernmental	6,921,597	7,109,471	7,113,976	4,505
Other Revenues	306,120	314,429	314,628	199
Total Revenues	26,939,192	27,670,409	27,687,941	17,532
Expenditures:				
Current:				
Instruction:				
Regular	14,696,709	14,783,026	14,215,197	567,829
Special	3,152,424	3,170,939	3,049,140	121,799
Other	14,844	14,932	14,358	574
Support Services:				
Pupil	2,186,158	2,198,997	2,114,532	84,465
Instructional Staff	1,193,468	1,200,477	1,154,366	46,111
General Administration	59,379	59,728	57,434	2,294
School Administration	2,072,078	2,084,248	2,004,190	80,058
Fiscal	1,143,565	1,150,281	1,106,098	44,183
Business	165,091	166,061	159,682	6,379
Operations and Maintenance	1,820,475	1,831,167	1,760,830	70,337
Pupil Transportation	386,292	388,561	373,636	14,925
Central	160,199	161,140	154,950	6,190
Extracurricular Activities	572,438	575,800	553,683	22,117
Debt Service:				
Principal Retirement	150,015	150,896	145,100	5,796
Interest and Fiscal Charges	42,240	42,488	40,856	1,632
Total Expenditures	27,815,375	27,978,741	26,904,052	1,074,689
Excess of Revenues Over (Under) Expenditures	(876,183)	(308,332)	783,889	1,092,221
Other Financing Sources (Uses):				
Advances (Out)	(58,576)	(58,920)	(56,657)	2,263
Total Other Financing Sources (Uses)	(58,576)	(58,920)	(56,657)	2,263
Net Change in Fund Balance	(934,759)	(367,252)	727,232	1,094,484
Fund Balance Beginning of Year (includes prior year encumbrances appropriated)	6,787,217	6,787,217	6,787,217	0
Fund Balance End of Year	\$5,852,458	\$6,419,965	\$7,514,449	\$1,094,484

See accompanying notes to the required supplementary information.

Wyoming City School District
Notes to the Required Supplementary Information
For The Year Ended June 30, 2021

Note 1 – Budgetary Process

All funds, except agency funds, are legally required to be budgeted and appropriated. The major documents prepared are the tax budget, the appropriations resolution and the certificate of estimated resources which are prepared on the budgetary basis of accounting. The tax budget demonstrates a need for existing or increased tax rates. The certificate of estimated resources establishes a limit on the amount that the Board of Education may appropriate. The appropriation resolution is Board's authorization to spend resources and sets annual limits on expenditures plus encumbrances at the level of control selected by Board. The legal level of control has been established by Board at the fund level. Any budgetary modifications at this level may only be made by resolution of the Board of Education.

The certificate of estimated resources may be amended during the year if projected increases or decreases in revenue are identified by the School District Treasurer. The amounts reported as the original budgeted amounts on the budgetary statements reflect the amounts on the certificate of estimated resources when the original appropriations were adopted. The amounts reported as the final budgeted amounts on the budgetary statements reflect the amounts on the final amended certificate of estimated resources issued during the fiscal year 2021.

The appropriation resolution is subject to amendment by the Board throughout the year with the restriction that appropriations cannot exceed estimated resources. The amounts reported as the original budgeted amounts reflect the first appropriation resolution for that fund that covered the entire year, including amounts automatically carried forward from prior years. The amounts reported as the final budgeted amounts represent the final appropriation amounts passed by Board during the year.

While the District is reporting financial position, results of operations and changes in fund balance on the basis of generally accepted accounting principles (GAAP), the budgetary basis as provided by law is based upon accounting for certain transactions on a basis of cash receipts, disbursements and encumbrances. The Schedule of Revenues, Expenditures and Changes in Fund Balances - Budget and Actual (Non-GAAP Budgetary Basis) presented on the budgetary basis to provide a meaningful comparison of actual results with the budget. The major differences between the budget basis and GAAP basis are as follows:

1. Revenues are recorded when received in cash (budget basis) as opposed to when susceptible to accrual (GAAP basis).
2. Expenditures are recorded when paid in cash (budget basis) as opposed to when the liability is incurred (GAAP basis).
3. Encumbrances are treated as expenditures for all funds (budget basis) rather than as an assignment of fund balance for governmental fund types and expendable trust funds (GAAP basis).
4. Advances in and advances out are operating transactions (budget basis) as opposed to balance sheet transactions.
5. Some funds are reported as part of the general fund (GAAP basis) as opposed to the general fund being reported alone (budget basis).

The following table summarizes the adjustments necessary to reconcile the GAAP basis statements to the budgetary basis statements for the general fund.

Wyoming City School District
Notes to the Required Supplementary Information
For The Year Ended June 30, 2021

Net Change in Fund Balance

	<u>General</u>
GAAP Basis	\$4,339,367
Revenue Accruals	(5,829,477)
Expenditure Accruals	2,449,116
Transfers (Out)	(56,657)
Encumbrances	(175,116)
Funds Budgeted Elsewhere	<u>(1)</u>
Budget Basis	<u><u>\$727,232</u></u>

Note 2 - Net Pension Liability

School Employees Retirement System (SERS)

Changes in Benefit Terms:

2020-2021: There were no changes in benefit terms from the amounts reported for this fiscal year.

2019: With the authority granted the Board under Senate Bill 8, the Board has enacted a three year COLA delay for future benefit recipients commencing benefits on or after April 1, 2018.

2018: SERS changed from a fixed 3% annual increase to a Cost of Living Adjustment (COLA) based on the change in the Consumer Price Index (CPI-W), with a cap of 2.5% and a floor of 0%.

2014-2017: There were no changes in benefit terms from the amounts reported for these fiscal years.

Changes in Assumptions:

2018-2021: There were no changes in methods and assumptions used in the calculation of actuarial determined contributions for these fiscal years.

2017: The following changes of assumptions affected the total pension liability since the prior measurement date:

- (1) The assumed rate of inflation was reduced from 3.25% to 3.00%,
- (2) Payroll growth assumption was reduced from 4.00% to 3.50%,
- (3) Assumed real wage growth was reduced from 0.75% to 0.50%,
- (4) Rates of withdrawal, retirement and disability were updated to reflect recent experience,
- (5) Mortality among active members was updated to RP-2014 Blue Collar Mortality Table with fully generational projection and a five year age set-back for both males and females,
- (6) Mortality among service retired members, and beneficiaries was updated to the following RP-2014 Blue Collar Mortality Table with fully generational projection with Scale BB, 120% of male rates, and 110% of female rates,
- (7) Mortality among disabled members was updated to RP-2000 Disabled Mortality Table, 90% for male rates and 100% for female rates, set back five years is used for the period after disability retirement, and
- (8) The discount rate was reduced from 7.75% to 7.50%.

2014-2016: There were no changes in methods and assumptions used in the calculation of actuarial determined contributions for these fiscal years.

Wyoming City School District
Notes to the Required Supplementary Information
For The Year Ended June 30, 2021

State Teachers Retirement System (STRS)

Changes in Benefit Terms:

2019-2021: There were no changes in benefit terms from the amounts reported for these fiscal years.

2018: STRS decreased the Cost of Living Adjustment (COLA) to zero.

2014-2017: There were no changes in benefit terms from the amounts reported for these fiscal years.

Changes in Assumptions:

2019-2021: There were no changes in methods and assumptions used in the calculation of actuarial determined contributions for these fiscal years.

2018: The following changes of assumptions affected the total pension liability since the prior measurement date:

- (1) The long term expected rate of return was reduced from 7.75% to 7.45%,
- (2) The inflation assumption was lowered from 2.75% to 2.50%,
- (3) The payroll growth assumption was lowered to 3.00%,
- (4) Total salary increases rate was lowered by decreasing the merit component of the individual salary increases, in addition to a decrease of 0.25% due to lower inflation,
- (5) The healthy and disabled mortality assumptions were updated to the RP-2014 mortality tables with generational improvement scale MP-2016, and
- (6) Rates of retirement, termination and disability were modified to better reflect anticipated future experience.

2014-2017: There were no changes in methods and assumptions used in the calculation of actuarial determined contributions for these fiscal years.

Note 3 - Net OPEB (Asset)/Liability

School Employees Retirement System (SERS)

Changes in Benefit Terms:

2017-2021: There were no changes in benefit terms from the amounts reported for these fiscal years.

Changes in Assumptions:

2021: Amounts reported for the fiscal year incorporate changes in key methods and assumptions used in calculating the total OPEB liability as presented below:

- (1) Discount Rate:

Prior Measurement Date	3.22%
Measurement Date	2.63%
- (2) Municipal Bond Index Rate:

Prior Measurement Date	3.13%
Measurement Date	2.45%
- (3) Single Equivalent Interest Rate, net of plan investment expense, including price inflation:

Prior Measurement Date	3.22%
Measurement Date	2.63%

Wyoming City School District
Notes to the Required Supplementary Information
For The Year Ended June 30, 2021

2020: Amounts reported for the fiscal year incorporate changes in key methods and assumptions used in calculating the total OPEB liability as presented below:

- (4) Discount Rate:
 - Prior Measurement Date 3.70%
 - Measurement Date 3.22%
- (5) Municipal Bond Index Rate:
 - Prior Measurement Date 3.62%
 - Measurement Date 3.13%
- (6) Single Equivalent Interest Rate, net of plan investment expense, including price inflation:
 - Prior Measurement Date 3.70%
 - Measurement Date 3.22%

2019: Amounts reported for the fiscal year incorporate changes in key methods and assumptions used in calculating the total OPEB liability as presented below:

- (7) Discount Rate:
 - Prior Measurement Date 3.63%
 - Measurement Date 3.70%
- (8) Municipal Bond Index Rate:
 - Prior Measurement Date 3.56%
 - Measurement Date 3.62%
- (9) Single Equivalent Interest Rate, net of plan investment expense, including price inflation:
 - Prior Measurement Date 3.63%
 - Measurement Date 3.70%

2018: Amounts reported for the fiscal year incorporate changes in key methods and assumptions used in calculating the total OPEB liability as presented below:

- (1) Discount Rate:
 - Fiscal Year 2018 3.63%
 - Fiscal Year 2017 2.98%
- (2) Municipal Bond Index Rate:
 - Fiscal Year 2018 3.56%
 - Fiscal Year 2017 2.92%
- (3) Single Equivalent Interest Rate, net of plan investment expense, including price inflation:
 - Fiscal Year 2018 3.63%
 - Fiscal Year 2017 2.98%

2017: The following changes of assumptions affected the total OPEB liability since the prior measurement date:

- (1) The assumed rate of inflation was reduced from 3.25% to 3.00%,
- (2) Payroll growth assumption was reduced from 4.00% to 3.50%,
- (3) Assumed real wage growth was reduced from 0.75% to 0.50%,
- (4) Rates of withdrawal, retirement and disability were updated to reflect recent experience,
- (5) Mortality among active members was updated to RP-2014 Blue Collar Mortality Table with fully generational projection and a five year age set-back for both males and females,
- (6) Mortality among service retired members, and beneficiaries was updated to the following RP-2014 Blue Collar Mortality Table with fully generational projection with Scale BB, 120% of male rates, and 110% of female rates, and

Wyoming City School District
Notes to the Required Supplementary Information
For The Year Ended June 30, 2021

- (7) Mortality among disabled members was updated to RP-2000 Disabled Mortality Table, 90% for male rates and 100% for female rates, set back five years is used for the period after disability retirement.

State Teachers Retirement System (STRS)

Changes in Benefit Terms:

2021: There was no change to the claims costs process. Claim curves were updated to reflect the projected fiscal year end 2021 premium based on June 30, 2020 enrollment distribution. The non-Medicare subsidy percentage was increased effective January 1, 2021 from 1.984% to 2.055% per year of service. The non-Medicare frozen subsidy base premium was increased effective January 1, 2021. The Medicare subsidy percentages were adjusted effective January 1, 2021 to 2.1% for the AMA Medicare plan. The Medicare Part B monthly reimbursement elimination date was postponed indefinitely.

2020: There was no change to the claims costs process. Claim curves were trended to the fiscal year ending June 30, 2020 to reflect the current price renewals. The non-Medicare subsidy percentage was increased effective January 1, 2020 from 1.944% to 1.984% per year of service. The non-Medicare frozen subsidy base premium was increased effective January 1, 2020. The Medicare subsidy percentages were adjusted effective January 1, 2021 to 2.1% for the Medicare plan. The Medicare Part B monthly reimbursement elimination date was postponed to January 1, 2021.

2019: The subsidy multiplier for non-Medicare benefit recipients was increased from 1.900% to 1.944% per year of service effective January 1, 2019. The non-Medicare frozen subsidy base premium was increased effective January 1, 2019 and all remaining Medicare Part B premium reimbursements will be discontinued beginning January 1, 2020. The Board is extending the current Medicare Part B partial reimbursement program for one year. Under this program, benefit recipients currently enrolled in the STRS Ohio Health Care Program and Medicare Part B receive \$29.90 per month to reimburse a portion of the Medicare Part B premium. The reimbursement was set to be reduced to \$0 beginning January 1, 2020. This impacts about 85,000 benefit recipients.

2018: The subsidy multiplier for non-Medicare benefit recipients was reduced from 2.1 percent to 1.9 percent per year of service. Medicare Part B premium reimbursements were discontinued for certain survivors and beneficiaries and all remaining Medicare Part B premium reimbursements will be discontinued beginning January 1, 2019.

2017: There were no changes in benefit terms from the amounts reported for this fiscal year.

Changes in Assumptions:

2021: There were changes in assumptions during the measurement year, which decreased the total OPEB liability by approximately \$0.26 billion. The assumption changes included changes in healthcare costs and trends.

2020: There were changes in assumptions during the measurement year, which increased the total OPEB liability by approximately \$0.04 billion. The assumption changes included changes in healthcare costs and trends.

2019: The discount rate was increased from the blended rate of 4.13% to the long-term expected rate of return of 7.45% based on the methodology defined under GASB Statement No. 74, Financial Reporting for Postemployment Benefit Plans Other Than Pension Plans (OPEB). Valuation year per capita health care costs were updated.

Wyoming City School District
Notes to the Required Supplementary Information
For The Year Ended June 30, 2021

2018: The discount rate was increased from 3.26 percent to 4.13 percent based on the methodology defined under GASB Statement No. 74, Financial Reporting for Postemployment Benefit Plans Other Than Pension Plans (OPEB) and the long term expected rate of return was reduced from 7.75 percent to 7.45 percent. Valuation year per capita health care costs were updated, and the salary scale was modified. The percentage of future retirees electing each option was updated based on current data and the percentage of future disabled retirees and terminated vested participants electing health coverage were decreased. The assumed mortality, disability, retirement, withdrawal and future health care cost trend rates were modified along with the portion of rebated prescription drug costs.

2017: There were no changes in methods and assumptions used in the calculation of actuarial determined contributions for this fiscal year.

This Space Intentionally Left Blank

**WYOMING CITY SCHOOL DISTRICT
HAMILTON COUNTY
SCHEDULE OF EXPENDITURES OF FEDERAL AWARDS
FOR THE YEAR ENDED JUNE 30, 2021**

Federal Grant/ Pass Through Grantor Program Title	Pass Through Entity Number	Assistance Listing Number	Federal Expenditures
U.S. DEPARTMENT OF EDUCATION			
Passed Through Ohio Department of Education:			
Special Education Cluster:			
Special Education-Grants to States	3M20	84.027	383,402
Special Education-Preschool Grants	3C50	84.173	3,402
Total Special Education Cluster			<u>386,804</u>
Title I Grants to Local Educational Agencies	3M00	84.010	164,027
Supporting Effective Instruction State Grants	3Y60	84.367	66,490
Student Support and Academic Enrichment Program	3H10	84.424	22,819
COVID-19 Elementary and Secondary School Emergency Relief Fund	3HS0	84.425	<u>118,396</u>
Total U.S. Department of Education			<u>758,536</u>
 U.S. DEPARTMENT OF THE TREASURY			
Passed Through Ohio Department of Education			
COVID-19 Coronavirus Relief Fund	5CV1	21.019	128,564
Passed Through Hamilton County, Ohio			
COVID-19 Coronavirus Relief Fund	CRF-Local	21.019	98,537
Total Coronavirus Relief Fund			<u>227,101</u>
Total U.S. Department of the Treasury			<u>227,101</u>
 THE INSTITUTE OF MUSEUM AND LIBRARY SERVICES			
Passed through the State Library Board:			
COVID - 19 Grants to States - Library Services and Technology Act	CARES-VIII-267-21	45.310	<u>2,768</u>
Total Institute of Museum and Library Services			<u>2,768</u>
Total Expenditures of Federal Awards			<u><u>\$988,405</u></u>

NOTES TO SCHEDULE OF EXPENDITURES OF FEDERAL AWARDS

NOTE A -- SIGNIFICANT ACCOUNTING POLICIES

The accompanying schedule of expenditures of federal awards is a summary of the activity of the District's federal award programs. The schedule has been prepared using the cash basis of accounting. The information in this schedule is presented in accordance with the requirements of Title 2 U.S. Code of Federal Regulations Part 200, Uniform Administrative Requirements, Cost Principles, and Audit Requirements for Federal Awards (Uniform Guidance). The District did not elect to use the 10-percent de minimis indirect cost rate as allowed under the Uniform Guidance.

**INDEPENDENT AUDITOR'S REPORT ON INTERNAL CONTROL OVER FINANCIAL REPORTING
AND ON COMPLIANCE AND OTHER MATTERS BASED ON AN AUDIT OF FINANCIAL
STATEMENTS PERFORMED IN ACCORDANCE WITH *GOVERNMENT AUDITING STANDARDS***

To the Board of Education
Wyoming City School District

We have audited, in accordance with the auditing standards generally accepted in the United States of America and the standards applicable to financial audits contained in *Government Auditing Standards* issued by the Comptroller General of the United States, the financial statements of the governmental activities, each major fund, and the aggregate remaining fund information of the Wyoming City School District (the District), as of and for the year ended June 30, 2021, and the related notes to the financial statements, which collectively comprise the District's basic financial statements and have issued our report thereon dated December 10, 2021.

Internal Control over Financial Reporting

In planning and performing our audit of the financial statements, we considered the District's internal control over financial reporting (internal control) as a basis for designing audit procedures that are appropriate in the circumstances for the purpose of expressing our opinions on the financial statements, but not for the purpose of expressing an opinion on the effectiveness of the District's internal control. Accordingly, we do not express an opinion on the effectiveness of the District's internal control.

A deficiency in internal control exists when the design or operation of a control does not allow management or employees, in the normal course of performing their assigned functions, to prevent, or detect and correct, misstatements on a timely basis. *A material weakness* is a deficiency, or a combination of deficiencies, in internal control, such that there is a reasonable possibility that a material misstatement of the entity's financial statements will not be prevented, or detected and corrected on a timely basis. *A significant deficiency* is a deficiency, or a combination of deficiencies, in internal control that is less severe than a material weakness, yet important enough to merit attention by those charged with governance.

Our consideration of internal control was for the limited purpose described in the first paragraph of this section and was not designed to identify all deficiencies in internal control that might be material weaknesses or, significant deficiencies. Given these limitations, during our audit we did not identify any deficiencies in internal control that we consider to be material weaknesses. However, material weaknesses may exist that have not been identified.

Compliance and Other Matters

As part of obtaining reasonable assurance about whether the District's financial statements are free from material misstatement, we performed tests of its compliance with certain provisions of laws, regulations, contracts, and grant agreements, noncompliance with which could have a direct and material effect on the financial statements. However, providing an opinion on compliance with those provisions was not an objective of our audit, and accordingly, we do not express such an opinion. The results of our tests disclosed no instances of noncompliance or other matters that are required to be reported under *Government Auditing Standards*.

Purpose of this Report

The purpose of this report is solely to describe the scope of our testing of internal control and compliance and the results of that testing, and not to provide an opinion on the effectiveness of the entity's internal control or on compliance. This report is an integral part of an audit performed in accordance with *Government Auditing Standards* in considering the entity's internal control and compliance. Accordingly, this communication is not suitable for any other purpose.

Plattenburg & Associates, Inc.

Plattenburg & Associates, Inc.
Cincinnati, Ohio
December 10, 2021

**INDEPENDENT AUDITOR'S REPORT ON COMPLIANCE FOR EACH MAJOR FEDERAL PROGRAM AND
ON INTERNAL CONTROL OVER COMPLIANCE REQUIRED BY UNIFORM GUIDANCE**

To the Board of Education
Wyoming City School District

Report on Compliance for Each Major Federal Program

We have audited the Wyoming City School District's (the District) compliance with the types of compliance requirements described in the *OMB Compliance Supplement* that could have a direct and material effect on each of the District's major federal programs for the year ended June 30, 2021. The District's major federal programs are identified in the summary of auditor's results section of the accompanying schedule of findings and questioned costs.

Management's Responsibility

Management is responsible for compliance with the requirements of laws, regulations, contracts, and grants applicable to its federal programs.

Auditor's Responsibility

Our responsibility is to express an opinion on compliance for each of the District's major federal programs based on our audit of the types of compliance requirements referred to above. We conducted our audit of compliance in accordance with auditing standards generally accepted in the United States of America; the standards applicable to financial audits contained in *Government Auditing Standards*, issued by the Comptroller General of the United States; and the audit requirements of Title 2 U.S. *Code of Federal Regulations* Part 200, *Uniform Administrative Requirements, Cost Principles, and Audit Requirements for Federal Awards* (Uniform Guidance). Those standards and the Uniform Guidance require that we plan and perform the audit to obtain reasonable assurance about whether noncompliance with the types of compliance requirements referred to above that could have a direct and material effect on a major federal program occurred. An audit includes examining, on a test basis, evidence about the District's compliance with those requirements and performing such other procedures, as we considered necessary in the circumstances.

We believe that our audit provides a reasonable basis for our opinion on compliance for each major federal program. However, our audit does not provide a legal determination of the District's compliance.

Opinion on Each Major Federal Program

In our opinion, the District, complied, in all material respects, with the types of compliance requirements referred to above that could have a direct and material effect on each of its major federal programs for the year ended June 30, 2021.

Report on Internal Control over Compliance

Management of the District is responsible for establishing and maintaining effective internal control over compliance with the types of compliance requirements referred to above. In planning and performing our audit of compliance, we considered the District's internal control over compliance with the types of requirements that could have a direct and material effect on each major federal program to determine the auditing procedures that are appropriate in the circumstances for the purpose of expressing an opinion on compliance for each major federal program and to test and report on internal control over compliance in accordance with the Uniform Guidance, but not for the purpose of expressing an opinion on the effectiveness of internal control over compliance. Accordingly, we do not express an opinion on the effectiveness of the District's internal control over compliance.

A deficiency in internal control over compliance exists when the design or operation of a control over compliance does not allow management or employees, in the normal course of performing their assigned functions, to prevent, or detect and correct, noncompliance with a type of compliance requirement of a federal program on a timely basis. *A material weakness in internal control over compliance* is a deficiency, or combination of deficiencies, in internal control over compliance, such that there is a reasonable possibility that material noncompliance with a type of compliance requirement of a federal program will not be prevented, or detected and corrected, on a timely basis. *A significant deficiency in internal control over compliance* is a deficiency, or a combination of deficiencies, in internal control over compliance with a type of compliance requirement of a federal program that is less severe than a material weakness in internal control over compliance, yet important enough to merit attention by those charged with governance.

Our consideration of internal control over compliance was for the limited purpose described in the first paragraph of this section and was not designed to identify all deficiencies in internal control over compliance that might be material weaknesses or significant deficiencies. We did not identify any deficiencies in internal control over compliance that we consider to be material weaknesses. However, material weaknesses may exist that have not been identified.

The purpose of this report on internal control over compliance is solely to describe the scope of our testing of internal control over compliance and the results of that testing based on the requirements of the Uniform Guidance. Accordingly, this report is not suitable for any other purpose.

Plattensburg & Associates, Inc.

Plattensburg & Associates, Inc.
Cincinnati, Ohio
December 10, 2021

**WYOMING CITY SCHOOL DISTRICT
SCHEDULE OF FINDINGS AND QUESTIONED COSTS
Year Ended June 30, 2021**

Section I – Summary of Auditor’s Results

Financial Statements

Type of auditor’s report issued on whether the financial statements audited were prepared in accordance with GAAP: Unmodified

Internal control over financial reporting:

- Material weakness(es) identified? No
- Significant Deficiency(s) identified? None reported

Noncompliance material to financial statements noted? No

Federal Awards

Internal control over major federal programs:

- Material weakness(es) identified? No
- Significant Deficiency(s) identified? None reported

Type of auditor’s report issued on compliance for major federal programs: Unmodified

Any audit findings disclosed that are required to be reported in accordance with 2 CFR 200.516(a)? No

Identification of major federal programs:

Special Education Cluster
Elementary and Secondary School Emergency Relief Fund 84.425D

Dollar threshold used to distinguish between Type A and Type B Programs \$750,000

Auditee qualified as low-risk auditee? No

Section II – Findings Related to the Financial Statements Required to be reported in Accordance with GAGAS

None

Section III – Federal Award Findings and Questioned Costs

None

**WYOMING CITY SCHOOL DISTRICT
SCHEDULE OF PRIOR AUDIT FINDINGS AND QUESTIONED COSTS
JUNE 30, 2021**

Summary of Prior Audit Findings and Questioned Costs:

None. Wyoming City Schools did not require a single audit in the prior year.

This page intentionally left blank.

OHIO AUDITOR OF STATE KEITH FABER



WYOMING CITY SCHOOL DISTRICT

HAMILTON COUNTY

AUDITOR OF STATE OF OHIO CERTIFICATION

This is a true and correct copy of the report, which is required to be filed pursuant to Section 117.26, Revised Code, and which is filed in the Office of the Ohio Auditor of State in Columbus, Ohio.



Certified for Release 12/28/2021

88 East Broad Street, Columbus, Ohio 43215
Phone: 614-466-4514 or 800-282-0370

This report is a matter of public record and is available online at
www.ohioauditor.gov