



IMPORTANT UPDATES AND INFORMATION

JOIN US AT NYSABE!



WINTER 2024 WINDOW:

1/3/2024 - 2/16/2024

**English Form D
Spanish Form B**

**Information and resources on pages 2-3 to meet key milestones for Winter 2024 window of LAS Links Online.*

To ensure a smooth delivery of reports to all participating districts, **extensions to the testing window will not be allowed.*



Winter 2024

The purpose of this newsletter is to ensure that all member districts and staff are informed of important information, updates, and key dates in regards to the upcoming LAS Links administration.

Key Announcements:

- New, dedicated website for New York districts, including a comprehensive FAQs page, is posted at: www.LASLinks.com/NY
- For information about LAS Links Online, please view this new (short) LAS Links [video](#)

LAS LINKS ONLINE DATA DIVE TRAINING

December 13, 2023 | 8:30 a.m. - 11:30 a.m.

This webinar session will review the LAS Links Online Interactive Reports, and how to leverage the Proficiency Level Descriptors, Classroom Lessons, and Instructional Strategies to support language acquisition.

[Register Here](#)

LAS LINKS ONLINE SPRING USER MEETING

March 20, 2024 | 2:30 p.m. - 3:30 p.m.

This user meeting will review the LAS Links Online Longitudinal Data Reports available to track growth/regression from both the Fall and Winter LAS Links windows. The purpose is to ensure educators can use data to target instruction in preparation for the Spring 2024 NYSESLAT, and to support 24-25 SY programming decisions.

[Register Here](#)

As you prepare for the upcoming Winter testing window, Data Recognition Corporation (DRC) recommends that the following preparation steps take place. Included in the chart below are recommended tasks with **recommended target dates** to help guide your preparation.

DRC understands that each district will complete these tasks as schedules allow.

These are target dates to complete the tasks to allow enough time to complete all testing by 1/3/2024.

Target Completion Date	Task	Task Details	Supporting Resource/Guidance Document(s) and Forms
New to LAS Links: Immediate Attention Required	Follow the Steps on the Getting Started Quick Guide	This Quick Guide is a resource for the navigation and content of the LAS Links Online language proficiency assessment system. Complete the necessary steps on the Quick Guide.	Getting Started Quick Guide
Ongoing	Visit the LAS Links Digital Library Guidance Resources	The LAS Links Digital Library is your one-stop location for guidance on all pre-testing, during testing, and post-testing activities.	https://laslinks.com/ny/
12/18/2023	Add Additional Users	Confirm user access to the DRC INSIGHT Portal. Add new users as needed (include IT personnel).	Video Link: Adding Users Guide to Adding Users Determining User Roles
12/18/2023	Technology Setup	Confirm with your district IT staff that DRC INSIGHT is installed and ready for use on ONSITE student devices. For Remote Testing, a public URL is available for use (no installation required).	For technology guidance documents, log into the DRC INSIGHT Portal > General Information > Tech Manuals and Guides Remote Testing resources may be found here
12/19/2023	Register Students	Register students into the DRC INSIGHT Portal.	Video Link: Registering Students Guide to Registering Students
12/20/2023	Create Test Sessions	Create new test sessions in the DRC INSIGHT Portal. DRC will convert sessions to DRC Scoring — you will not be able to do this locally.	Video Link: Scheduling Test Sessions Guide to Scheduling Test Sessions
12/20/2023	Review Fall Webinar	Review /Share with staff the Pre-Test Webinar	Recording found here
12/21/2023	Print Test Tickets	Print student test tickets for testing.	Utilize the Scheduling Test Sessions video and guide (above) for information on printing test tickets.
12/21/2023	Student Practice Test	Allow students to practice using the online tools and to complete a few items in each domain in English and/or Spanish prior to live testing.	Navigating the Practice Test
1/3/2024	Test Window Starts	Utilize the Test Monitoring Application to monitor onsite and remote student testing.	Utilizing the Test Monitoring Application

Target Completion Date	Task	Task Details	Supporting Resource/Guidance Document(s) and Forms
Ongoing	Generate Batch Download (Student Proficiency) Reports	Scores for Listening (K–12) and Reading (K–3) are available within 30–60 minutes of test completion. Scores for Speaking (K–12), Reading (4–12), and Writing (K–12) are available within 5–7 business days of subtest completion.	Guide: Generating the Batch Download Reports Proficiency Level Descriptors LAS Links Instructional Strategies
2/16/2024	Testing Window Complete	DRC will start steps to validate and move your data to LAS Links Interactive Reports (IRS).	LAS Links IRS available within 15-20 business days of window closing
3/20/2024	LAS Links Spring User Meeting	Join DRC between 2:30 p.m. - 3:30 p.m. EST for the Spring User Meeting.	Register Here



LAS LINKS REPORTS AND INSTRUCTIONAL MATERIALS

On-Demand and Enhanced Student Reports:

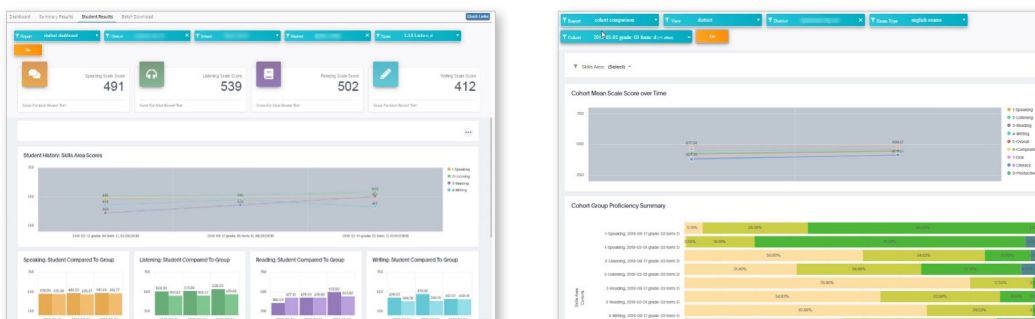
As students complete their assigned subtests, On-Demand reports will become available to help inform instruction. Scores for Listening (K–12) and Reading (K–3) are available within 30–60 minutes of test completion. Scores for Speaking (K–12), Reading (4–12), and Writing (K–12) are available within 5–7 business days of subtest completion.

- Click [HERE](#) for information on how to access the On-Demand reports.
- Click [HERE](#) for information on how to access the Enhanced student reports.
- Click [HERE](#) to watch a video on how to interpret and analyze your student reports.
- Click [HERE](#) to access LAS Links Instructional Strategies to use your data as a call to action.

LAS Links Interactive Reports:

LAS Links Interactive Reports are available 15–20 business days from the time the test window has closed. [Sample LAS Links Interactive Reports](#)

- Click [HERE](#) for a sneak peek on how to generate and interpret the reports.



LAS Links Instructional Guidance Lessons:

DRC provides, at no additional cost, the LAS Links Instructional Guidance Materials, which may be downloaded from the Portal. Go to My Applications > General Information > Documents.

Each lesson has an expected outcome

Select lessons by content focus and/or language proficiency level

Sample Lesson

Ideas to spur classroom interaction

Sample Lesson

Discuss Discuss Product Map

1. Distribute the "Made in the U.S.A." worksheet, a product map of the United States. Ask students to find the state where they live on the map. Next, review the state abbreviations and practice switching from state abbreviation to state name, e.g., find "TX" on the map. Have students point to "TX." Ask: "What is the name of the state labeled 'TX'?" Point to the state abbreviation list and show that this is "Texas." Yes, "TX" stands for "Texas." Continue this activity, practicing with several more state abbreviations.
2. Allow pairs of students time to work with the abbreviations, naming what abbreviations "stand for" on the maps using the following script:

A: Find (state abbreviation).
B: (B points to state.)
A: What does (state abbreviation) stand for?
B: (B says state name.)

Please feel free to contact us with any questions, and as always, all required technical assistance should be directed to the LAS Links Helpdesk.