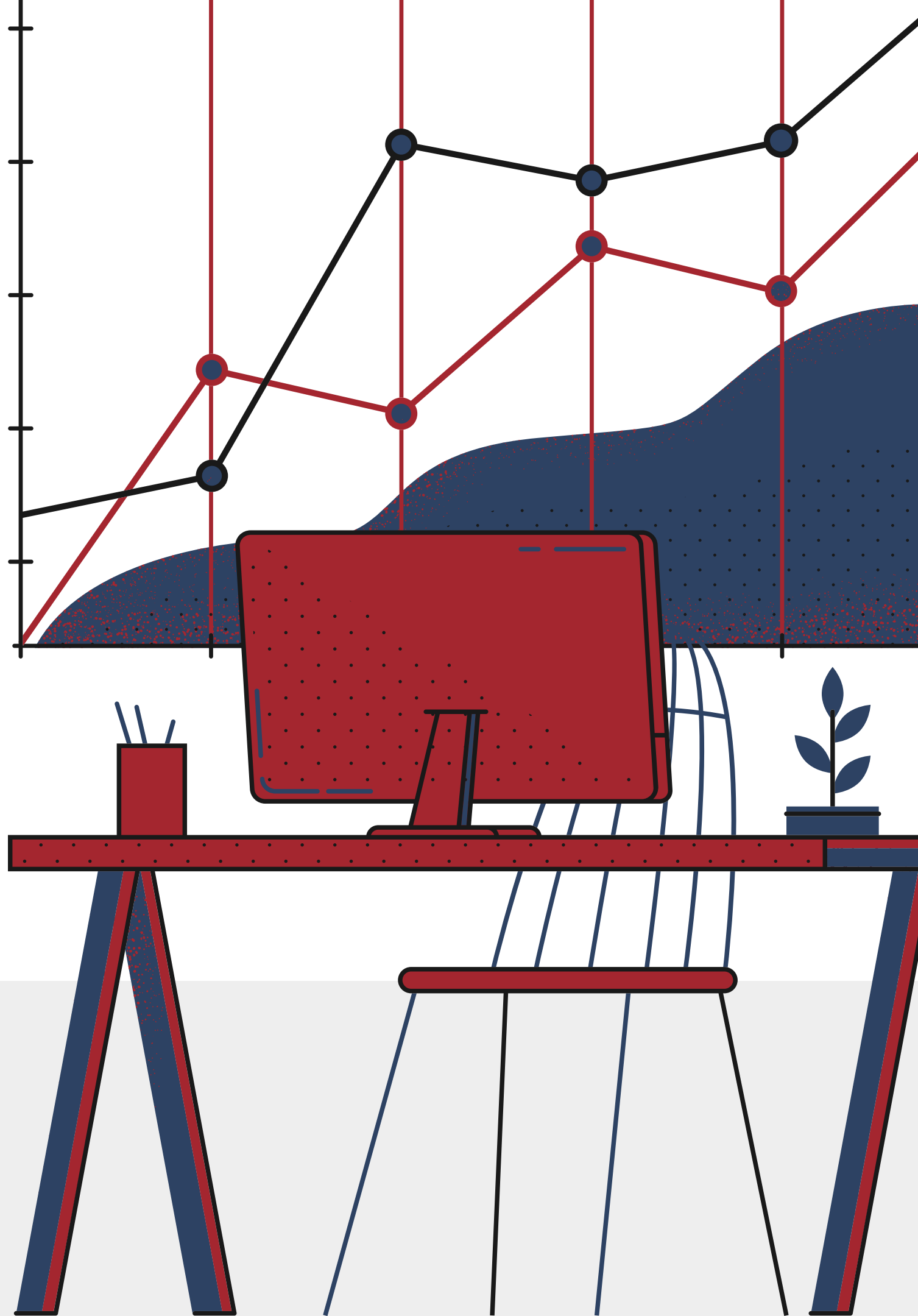




North Adams Community Schools

ELEARNING EXPECTATIONS

2022-2023 School Year Implementation



- I Legislation
- II Stratgic Plan and Core Values
- III Reflection
- IV Logistics
- V Next Steps

SCHOOL.

(c) As used in this section, "virtual student instructional day" means a student instructional day to which the following apply:

- (1) A school provides virtual instruction or remote learning to at least fifty percent (50%) of the students enrolled to attend in-person instruction at the school.**
- (2) A school counts the student instructional day toward meeting the one hundred eighty (180) day requirement established by section 3 of this chapter.**

(d) Except as provided in subsections (e) and (g), a school shall deliver:

- (1) teacher directed synchronous instruction; or**
- (2) a hybrid of:**
 - (A) teacher directed synchronous instruction for at least fifty percent (50%) of the particular instructional day; and**
 - (B) asynchronous learning;**

during the instructional time of a virtual student instructional day.

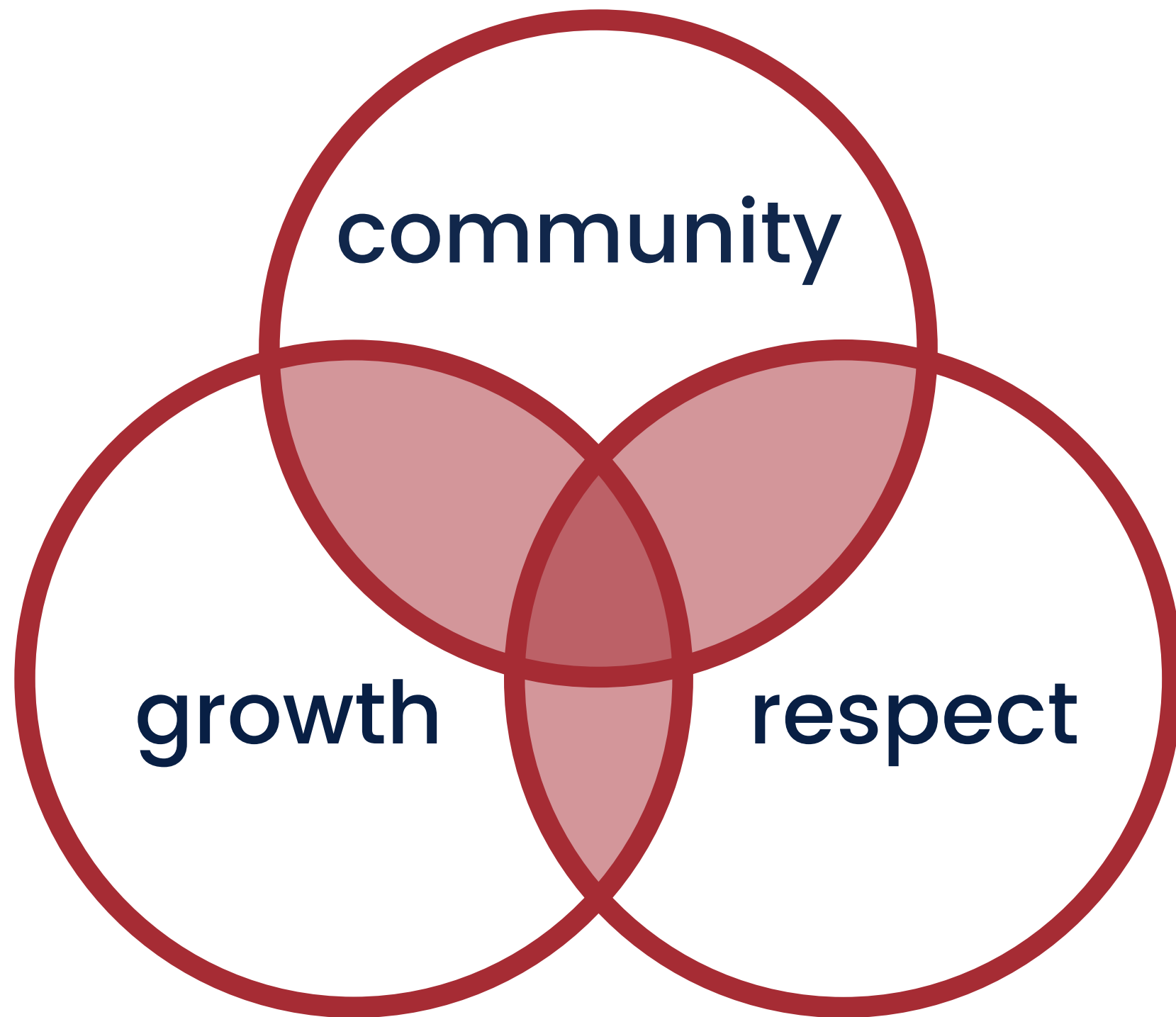
(e) Except as provided in subsection (g), a school may conduct not more than three (3) virtual student instructional days each school year that do not meet the requirements under subsection (d).

HEA 1093 was updated to include verbiage that aligns with the dyslexia legislation update.

We are awaiting guidance from the DOE as to what defines 'synchronous instruction,' as legislation left that matter to the DOE.

- Students are at the center of every decision.
- Students and staff deserve to learn and work in a safe, nurturing environment.
- Consistent immersion in intentional, evidence-based programming (whether academic, social-emotional, or behavioral) delivered through best practices in instruction is most likely to maximize student learning and growth.
- Each of us is part of a larger community to which we have a responsibility to protect, support, and grow.
- Open and transparent communication builds trust between stakeholders.
- Accountability coupled with compassion promotes resiliency, a key trait of a growth mindset.
- High quality staff who continually work to improve their craft are vital to the success of our organization and students.
- Parent involvement and supportive community partnerships promote student growth and achievement.
- Fiscal responsibility is a non-negotiable in achieving and sustaining our goals.



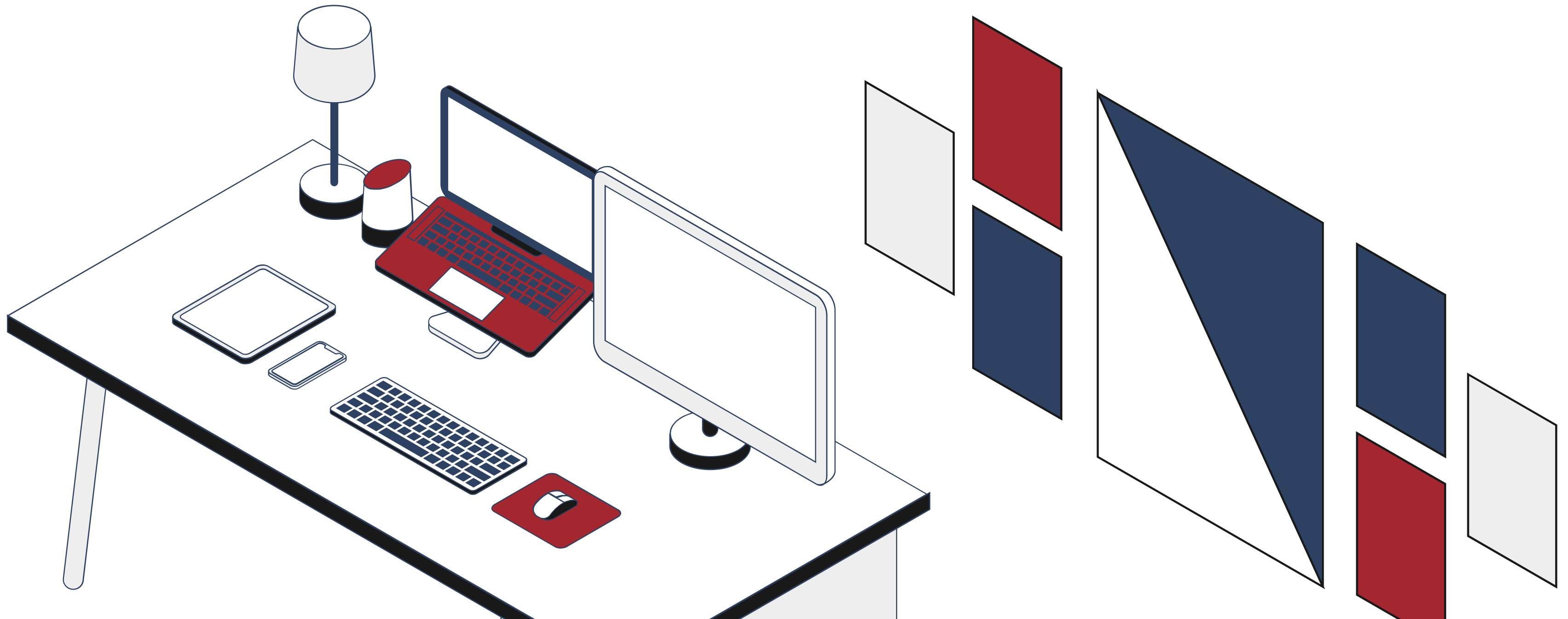


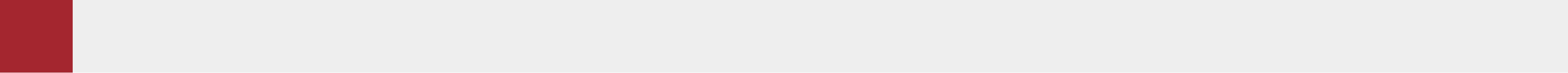
Community—You are welcome and belong here. We are a school family

Respect—Treat each other (and yourself with grace, kindness, and courtesy.

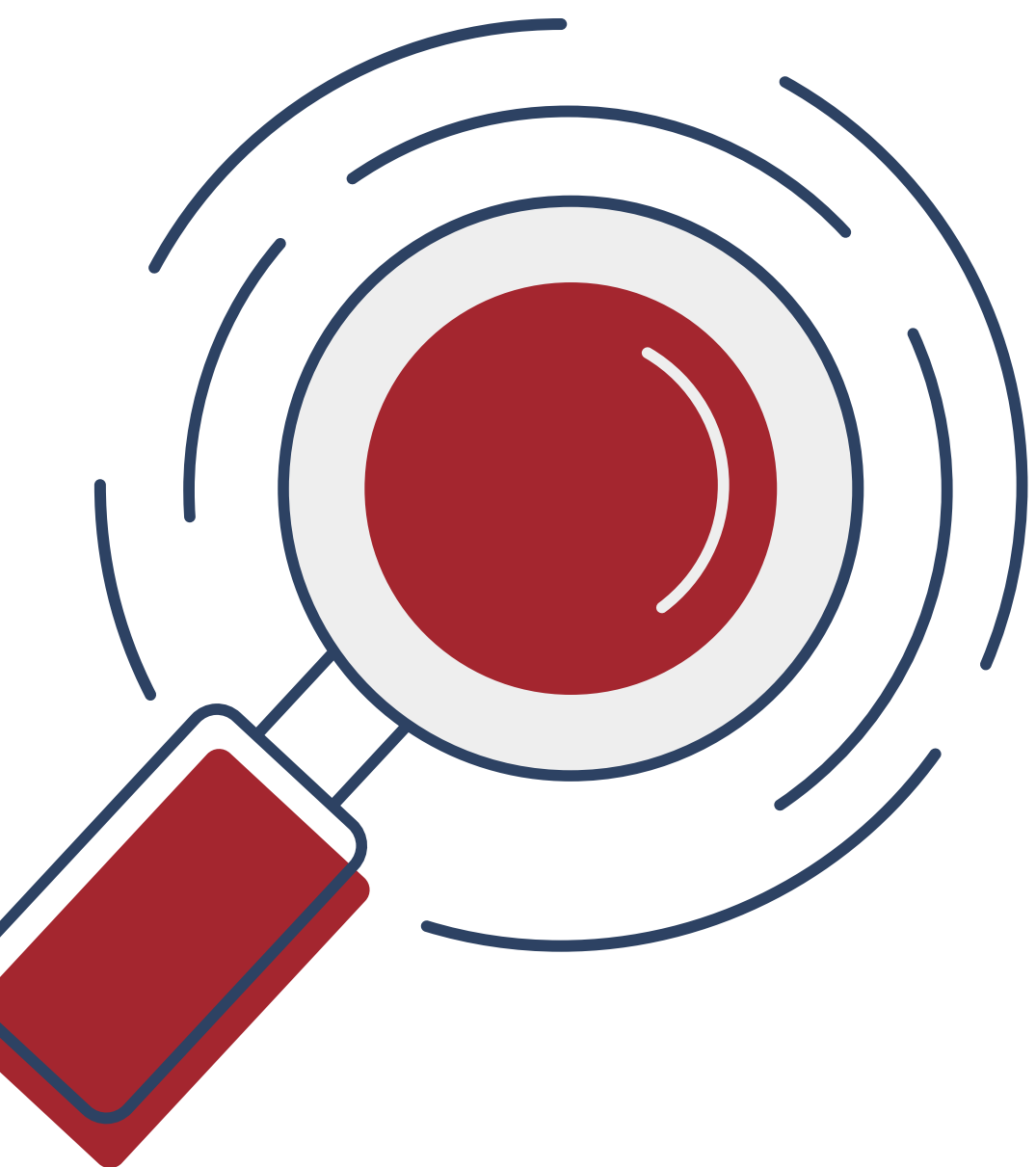
Growth—Each person has a unique potential and purpose. Our starting and ending points may be different, but we each are growing, striving toward realizing that potential and purpose.

Do you feel our current eLearning expectations are living into our core values and guiding principles?





Breaking it down...



K-5 64,960 minutes	367 min/day	3 hrs. 3 min.
6-8 68,910 minutes	389 min/day	3 hrs. 14 min.
9-12 70,281 minutes	397 min/day	3 hrs. 18 min,

In order to maintain compliance within legislation, at least 50% of our school day must be synchronous. The above table details what this looks like for NACS, taking the HB1003 waiver into account.

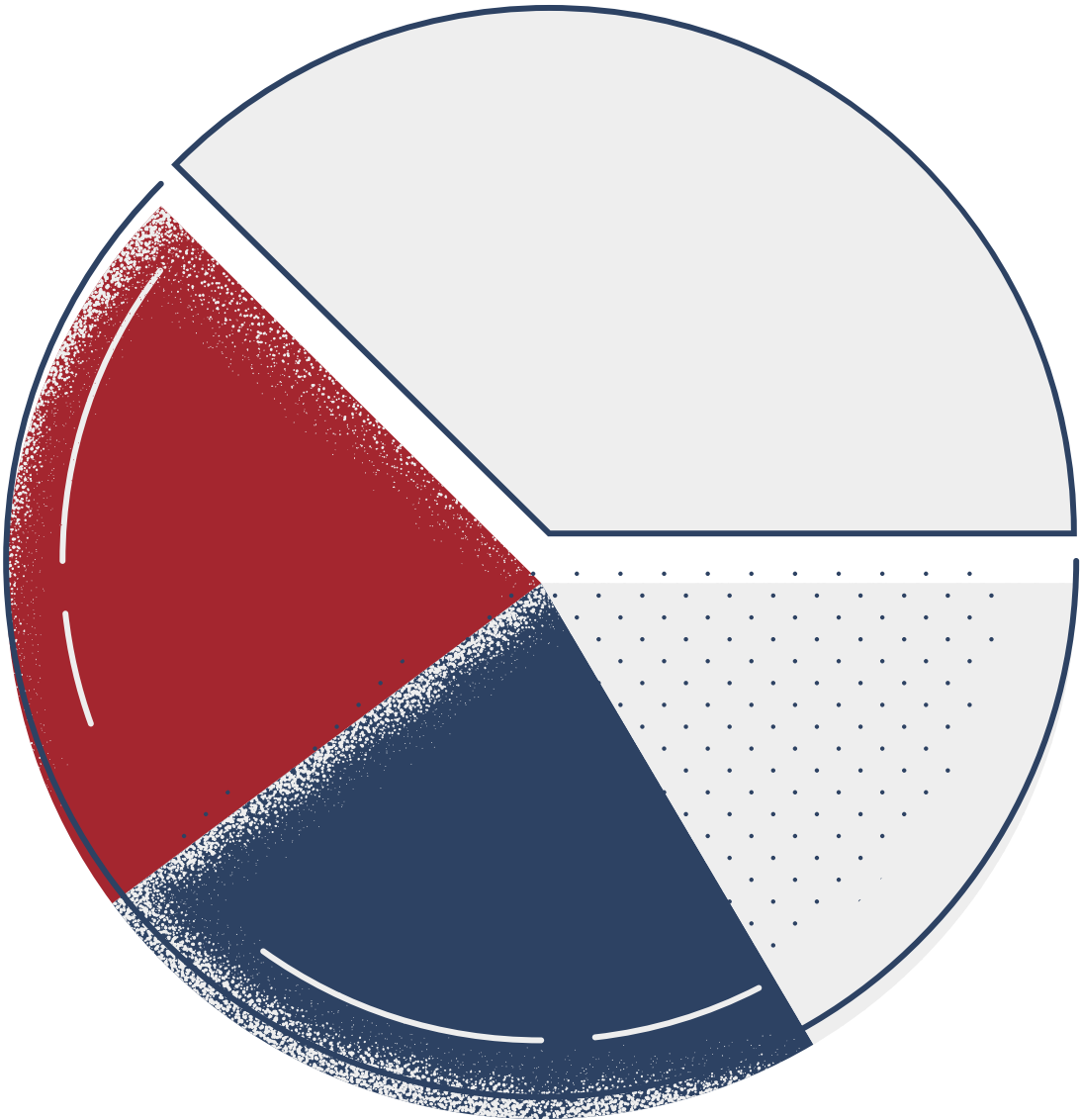
Pieces of an eLearning Day

Elementary

10:00 am – 12:00 pm Instruction
12:00 pm – 12:30 pm Lunch
12:35 pm – 1:40 pm Office Hours

Intstruction Block Format

- Welcome, attendance, community meeting
- Brain Break
- Reading Mini-lesson
- Reading Mini-lesson activity
- Brain Break
- Writing Mini-lesoon
- Writing Mini-lesson activity
- Brain Break
- Math Mini-lesson
- Math Mini-lesson activity



Special Education Teachers will follow their normal schedule, and support in breakout rooms during push-in classes. For supervised study, a RAS teachers will assign work with asynchronous videos for their classes.

Middle and High School

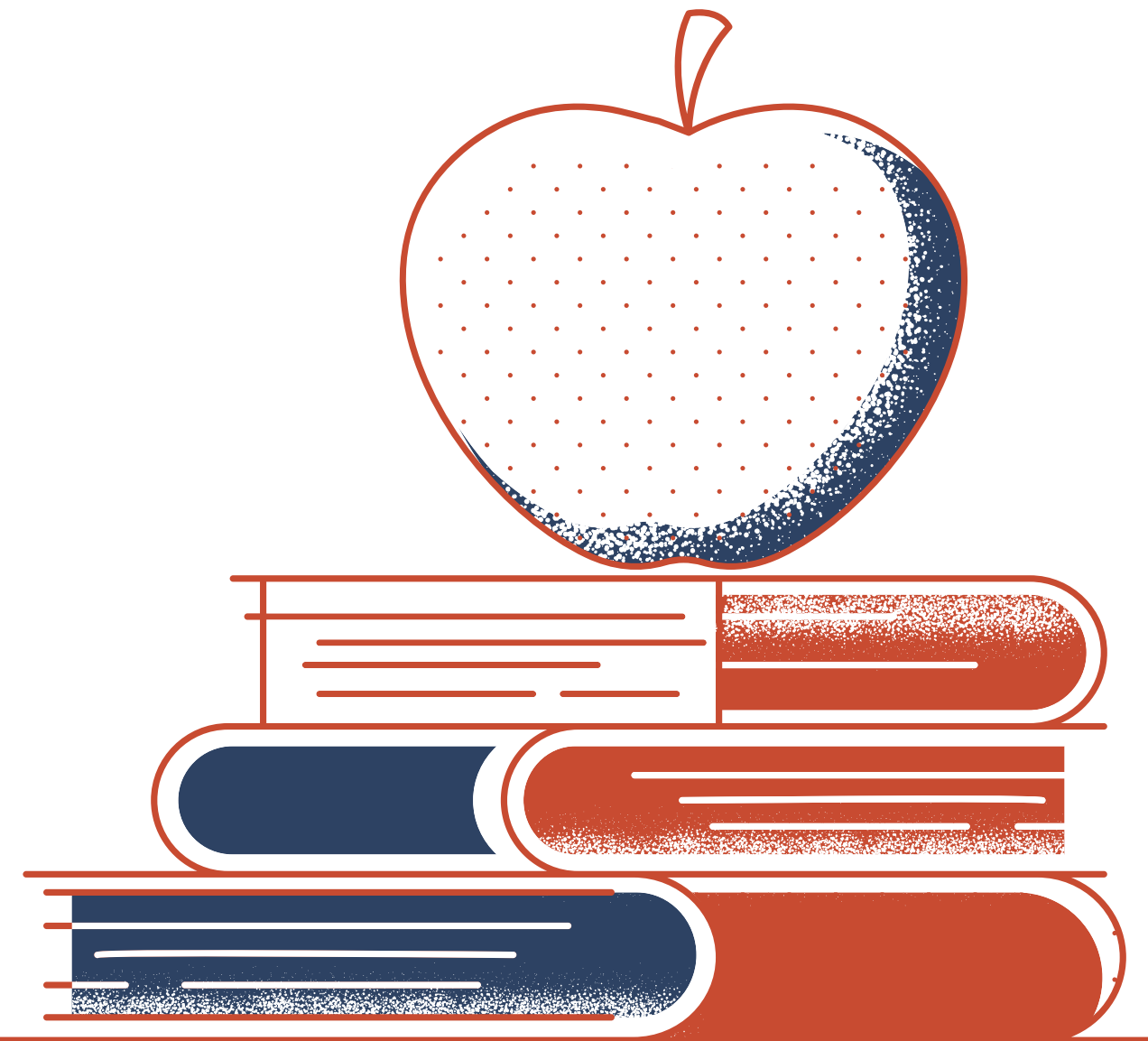
10:00 am – 10:20 am	1st
10:25 am – 10:45 am	2nd
10:50 am – 11:10 am	3rd
11:15 am – 11:35 am	4th
11:40 am – 12:00 pm	5th
12:00 pm – 12:30 pm	Lunch
12:35 pm – 12:55 pm	6th
1:00 pm – 1:20 pm	7th
1:30 pm – 2:10 pm	Office Hours

Audit Reporting Form

[illegible]

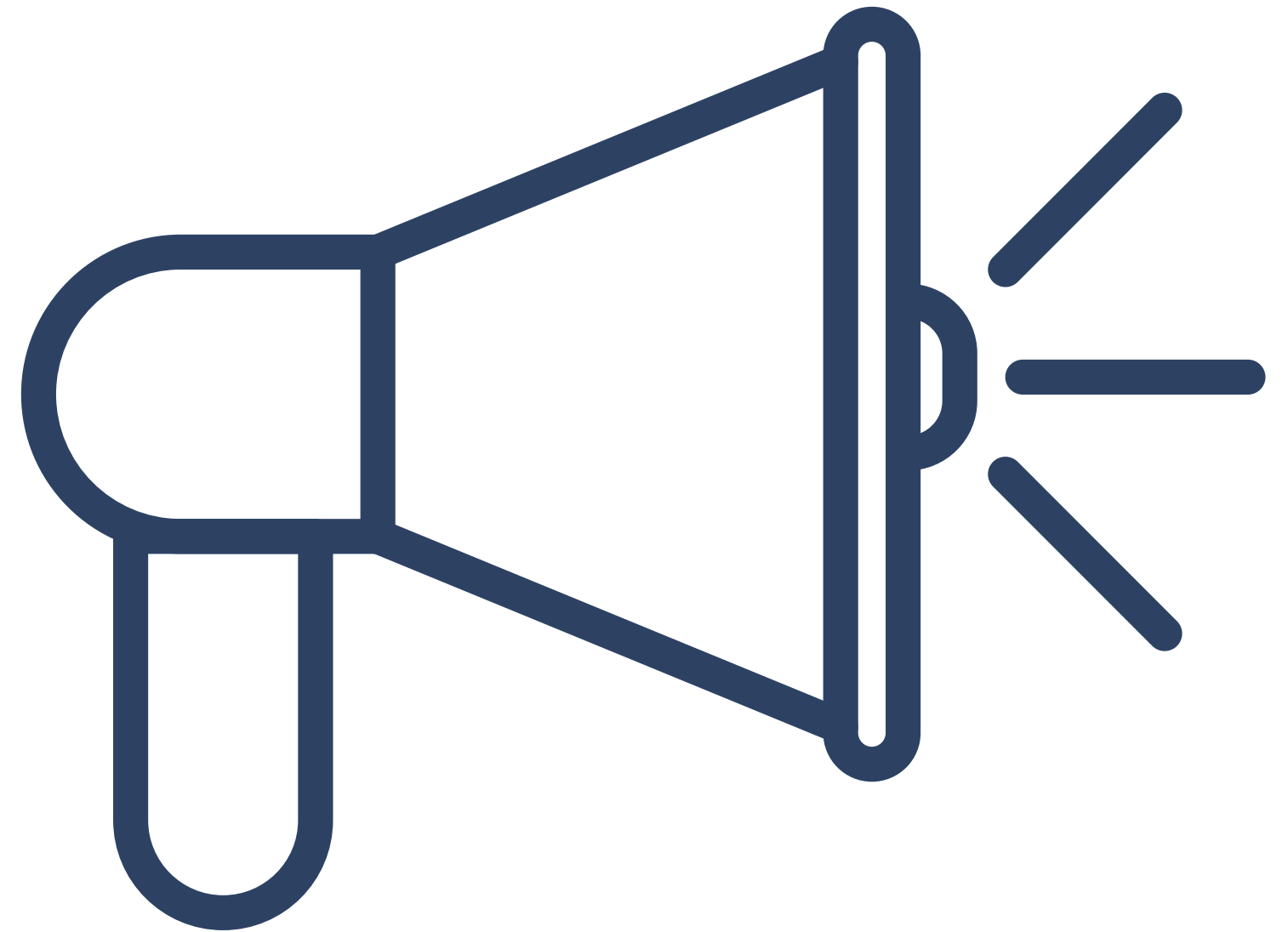
What do I have to do?

- Canvas assignments/modules for the day should be posted by 10:00 am
- Assignment/module will include your Teams link to join for synchronous learning
- Schedules and expectations will be shared with families
- Become familiar with Teams/Canvas integration
- Watch Teams support video from Drew
- Complete the form



Next Steps

- September 23, 2022 will be an eLearning practice day
- Prior to that, we want to support you with any PD and tutorials to make you feel comfortable.
- Use the QR code to let us know how you're feeling with the new expectations.



The End

**Thank you
for listening**

