



The Aurora

1957

UNIVERSITY OF
CARMATE
WORD ACADEMY

L.V.L.

"The writing is on the wall" —
Keep your courage and good cheer —
Keep me in your prayers — I'll
be remembering you and many things
as well — with prayers and laughter!
God love you — Keep the faith!
Fr. Adrian Clare



The Aurora

Incarnate Word Academy

Corpus Christi, Texas

1956-1957

Volume 32

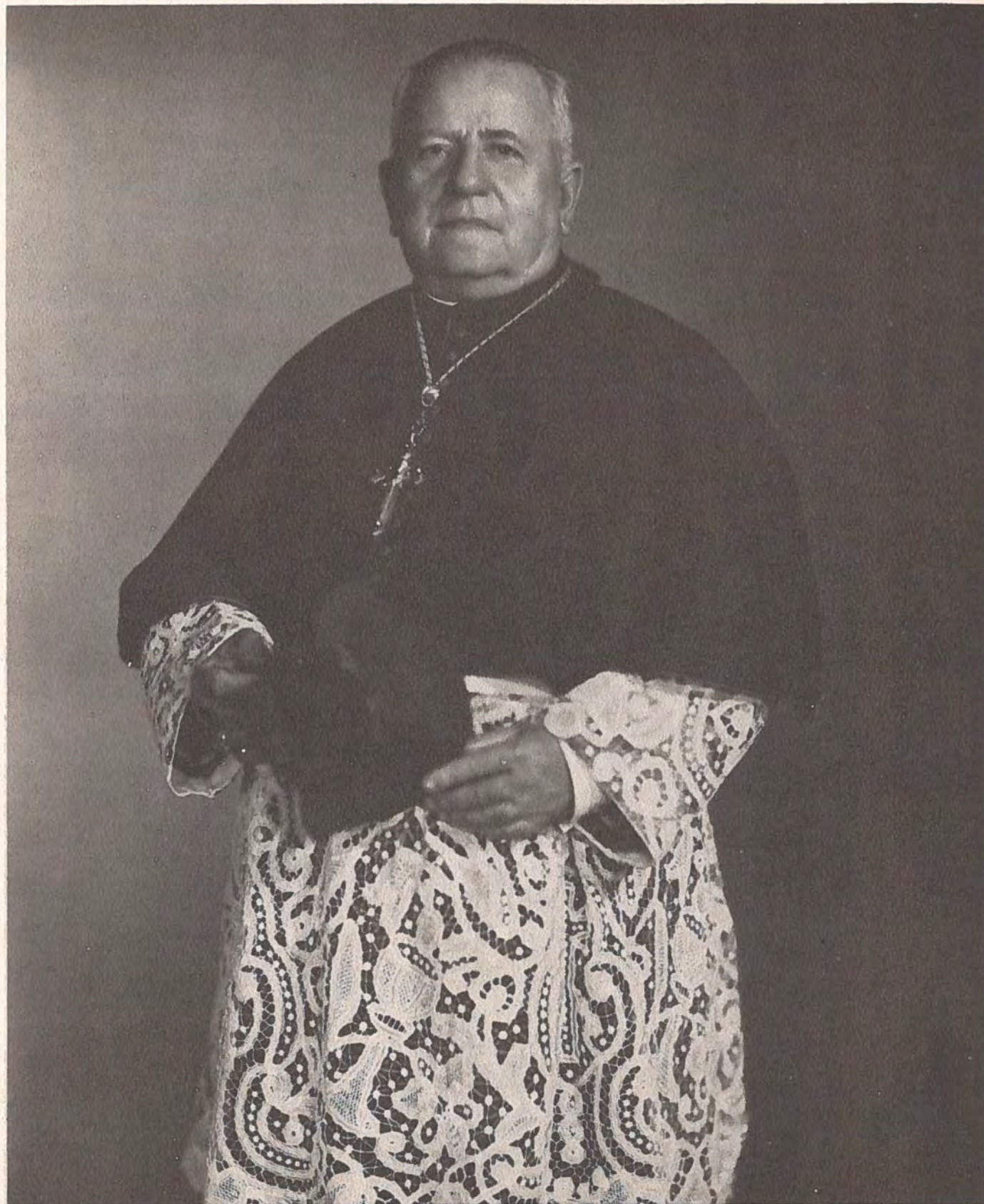
CORPUS CHRISTI ACADEMY

CORPUS CHRISTI ABBEY,
STAR ROUTE, BOX A-38-A
SANDIA, TEXAS 78383

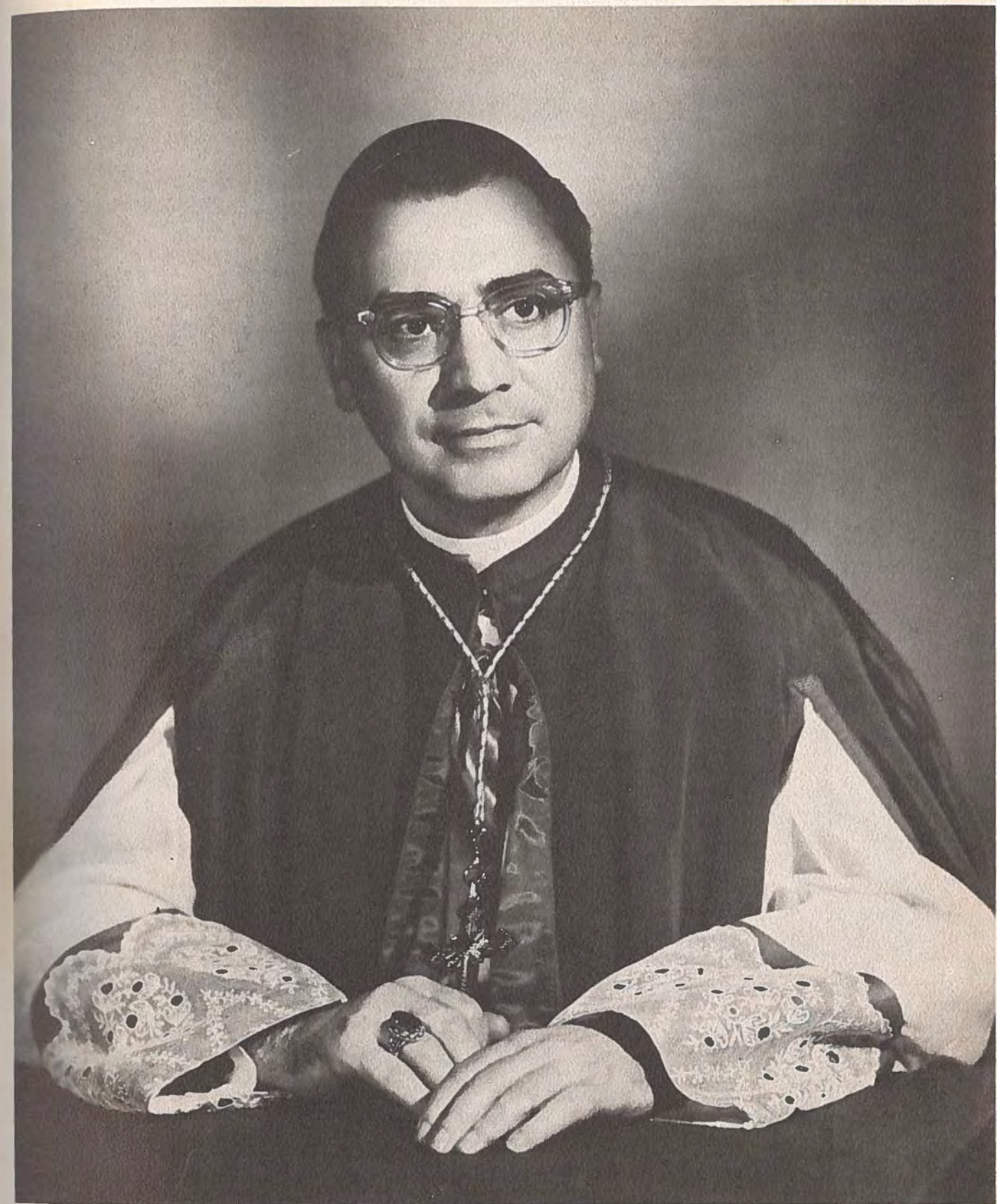
A Private High School for Girls

Conducted By

The Sisters of the Incarnate Word and Blessed Sacrament



His Excellency,
THE MOST REVEREND M. S. GARRIGA, D.D., LL.D.,
Bishop of Corpus Christi



His Excellency,
THE MOST REVEREND ADOLPH MARX, D.D., J.C.D.,
Titular Bishop of Citrus, and,
Auxiliary Bishop of Corpus Christi.



Annette Karam, Copy Editor; Marietta Villarreal, Layout Editor; Oralia Pena; Carolyn Carter, Class Editor; and Johnnie Lea Smith, Layout Editor, had many conferences over details as the AURORA deadline drew near.



Catherine D'Unger, Copy Editor, spent many afternoons writing copy for the 1957 AURORA.

Georgia Lea Durham, Business Manager, was kept busy all year attending to bills and advertising data for the AURORA.



THE AURORA STAFF

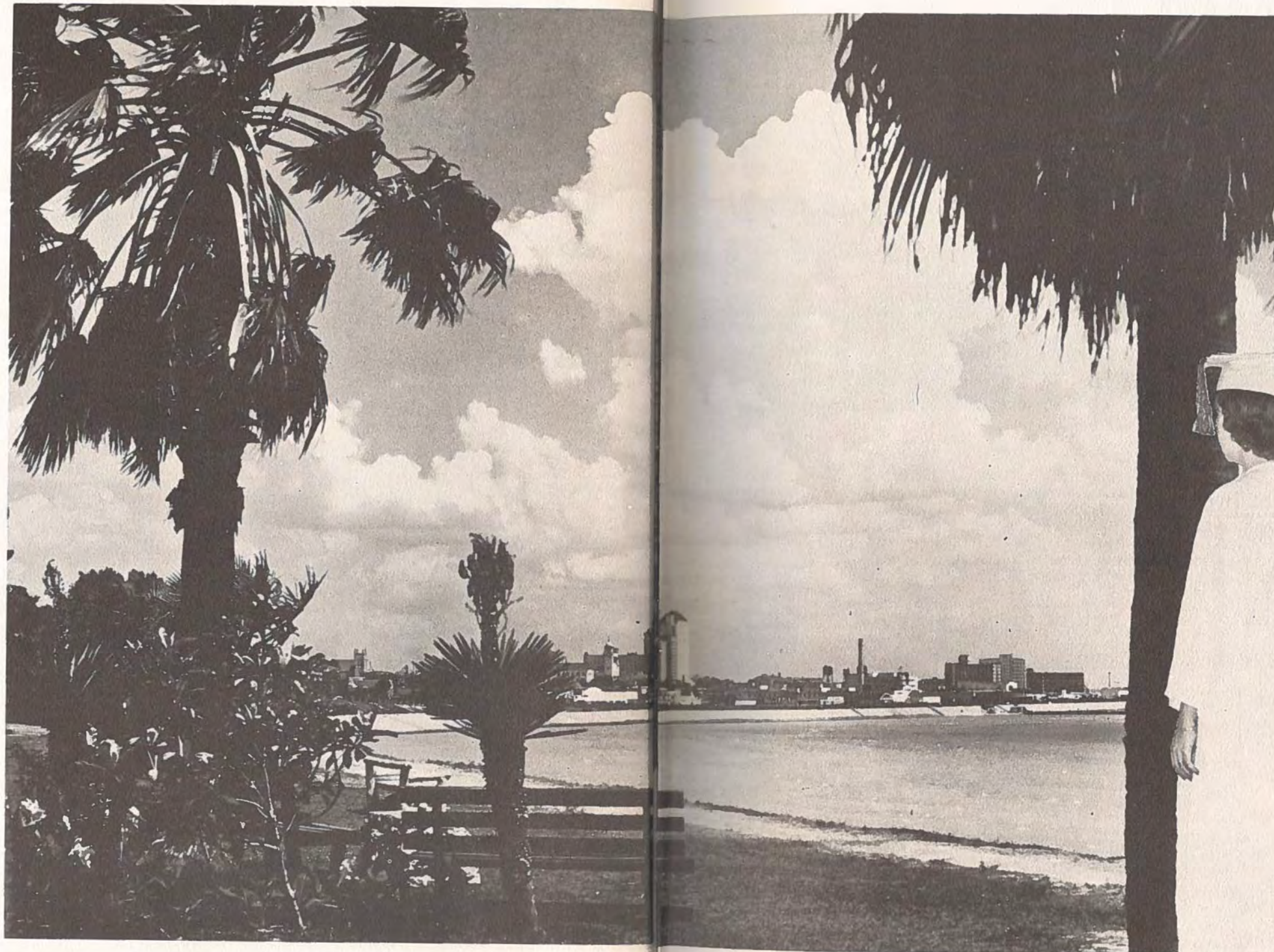
The Staff, along with their sponsor, Sister Jeanne Francis, spent many hours of planning and working to present the whole picture of IWA during the school session of 1956-57. Assistance from numerous other students, particularly in the sale of advertisements needed to finance the book, helped the Staff to realize their ambition—this the largest AURORA ever.

Contents

	Page
HIS EXCELLENCY, BISHOP GARRIGA	2
HIS EXCELLENCY, BISHOP MARX	3
AURORA STAFF	4
DEDICATION	4
TABLE OF CONTENTS	5
SENIORS	6
Senior Officers	8
Senior Favorites	9
"Miss Liberty"	13
Senior Class Pictures	14
UNDERCLASSMEN	32
Juniors	34
Sophomores	38
Freshmen	46
CLASSES	54
Religion	56
Language Arts	58
Mathematics	60
Commercial Arts	61
Foreign Languages	62
Homemaking	63
Social Science	64
Natural Science	65
Music	66
ORGANIZATIONS	68
Student Council	70
Beaker Breakers	71
Junior Confraternity of Christian Doctrine	72
Sodality	73
Angels Basketball Team	74
Angels Softball Team	75
Civics Club	76
Boarders' Club	77
Mothers' Club	78
Alumnae Association	79
CALENDAR	80
September	82
October	84
November	86
December	88
January	90
February	92
March	94
April	96
May	98
ADVERTISEMENTS	100

SENIORS

THE COURSE is ended. Passing through the portals of Incarnate Word Academy they leave the gentle guidance and love of their teachers for they must go into the wide world to lead it. With powerful insistence they will lead toward God and toward happiness.





SENIOR "A" OFFICERS ARE:

Anne Gonzales, President; Carolyn Carter, Vice-President; Mary Louise Gerant, Secretary; Mary Lee Lewis, Treasurer; Rose Marie Benys, Parliamentarian; Susan Dreis, Historian; Carol Flood, Reporter; Catherine D'Unger, Student Council Representative; Mary Ann Chilen, Student Council Representative; and Sister Mary Stanislaus, Sponsor.

SENIOR "A" ACHIEVEMENTS

Salutatorian Rose Marie Benys
 Student Council President Anne Gonzales
 Student Council Vice-President Carolyn Carter
 Student Council Secretary Mary Louise Gerant
 All-City Student Council Representatives
 Anne Gonzales and Carolyn Carter
 Student of the Month November Pat Liesenfeld
 Assistant Student Director of Glee Club Mary Lee Lewis
 President of Glee Club Carolyn Carter
 Vice-President of Glee Club Mary Lee Lewis
 Secretary-Treasurer of Glee Club Nan Allen
 Civics Club Parliamentarian Annette Karam
 EXTENSION'S Teen Board Representative Peggy Enright
 Secretary of Jr. C. C. D. Joyce Floyd
 Reporter of Jr. C. C. D. Anne Gonzales
 Mardi Gras Princess Mary Ann Castro
 Belle of Ball Nan Allen
 Miss Liberty Rose Marie Benys
 Beaker Breakers' Vice-President Rose Marie Benys
 Beaker Breakers' Treasurer Anne Gonzales
 Beaker Breakers' Reporter Mary Ann Chilen
 Prefect of Our Lady of Grace Sodality Mary Ann Chilen

Vice-Prefect of Our Lady of Grace Sodality
 Mary Frances B'own
 Treasurer of Our Lady of Grace Sodality Dorothy Bollom
 President of Boarders' Club Georgia Lea Durham
 Vice-President of Boarders' Club Mary Ann Chilen
 Pep Squad Manager Nan Allen
 Sergeant-at-Arms of Band Dorothy Bollom
 Captain of Basketball Team Suzanne Friedmann
 CGAA All-Star Team Suzanne Friedmann
 Class Goats Gwen Allen, Maureen Carter,
 Carolyn Carter and Joyce Floyd
 Feature Editor—Crown Staff Catherine D'Unger
 Make-up Editor—Crown Staff Annette Karam
 Exchange Editor—Crown Staff Peggy Enright
 Business Manager—Crown-Aurora Staff - Georgia Lee Durham
 Copy Editors—Aurora Staff Annette Karam and Catherine
 Copy Editors—Aurora Staff Annette Karam
 and Catherine D'Unger
 Lay-Out Editor—Aurora Staff Carolyn Carter
 Delegates to the THSPA convention Annette Karam
 and Catherine D'Unger
 First Place CBEA Catholic Views Contest Susan Dreis



SENIOR "B" OFFICERS ARE:

Christine Mattfeld, President; Lucille Prado, Vice-President; Patsy Trainor, Secretary; Celeste Pray, Treasurer; Emily Nelson, Parliamentarian; Sofie Zdansky, Historian; Marietta Villarreal, Reporter; Johnnie Lea Smith, Student Council Representative; and Sister Mary Luke, Sponsor.

SENIOR "B" ACHIEVEMENTS

Valedictorian Sofie Zdansky
 Student Council Treasurer Johnnie Lea Smith
 Student Council Parliamentarian Christine Mattfeld
 Student Council Reporter Lucille Prado
 Student Council Historian Patsy Trainor
 Student of the Month—March Pat Speed
 Glee Club Parliamentarian Johnnie Lea Smith
 Glee Club Librarian Sharron Richards
 Civics' Club President Christine Mattfeld
 Civics' Club Treasurer Peggy Ralph
 Civics' Club Reporter Camille Thom
 President of Jr. C. C. D. Christine Mattfeld
 Vice-President of Jr. C.C.D. Lucille Prado
 Secretary of Jr. C. C. D. Joyce Ulcak
 Beaker Breakers' President Gerry Ann Migl
 Beaker Breakers' Secretary Geraldine Mikulec
 Beaker Breakers' Parliamentarian Celeste Pray

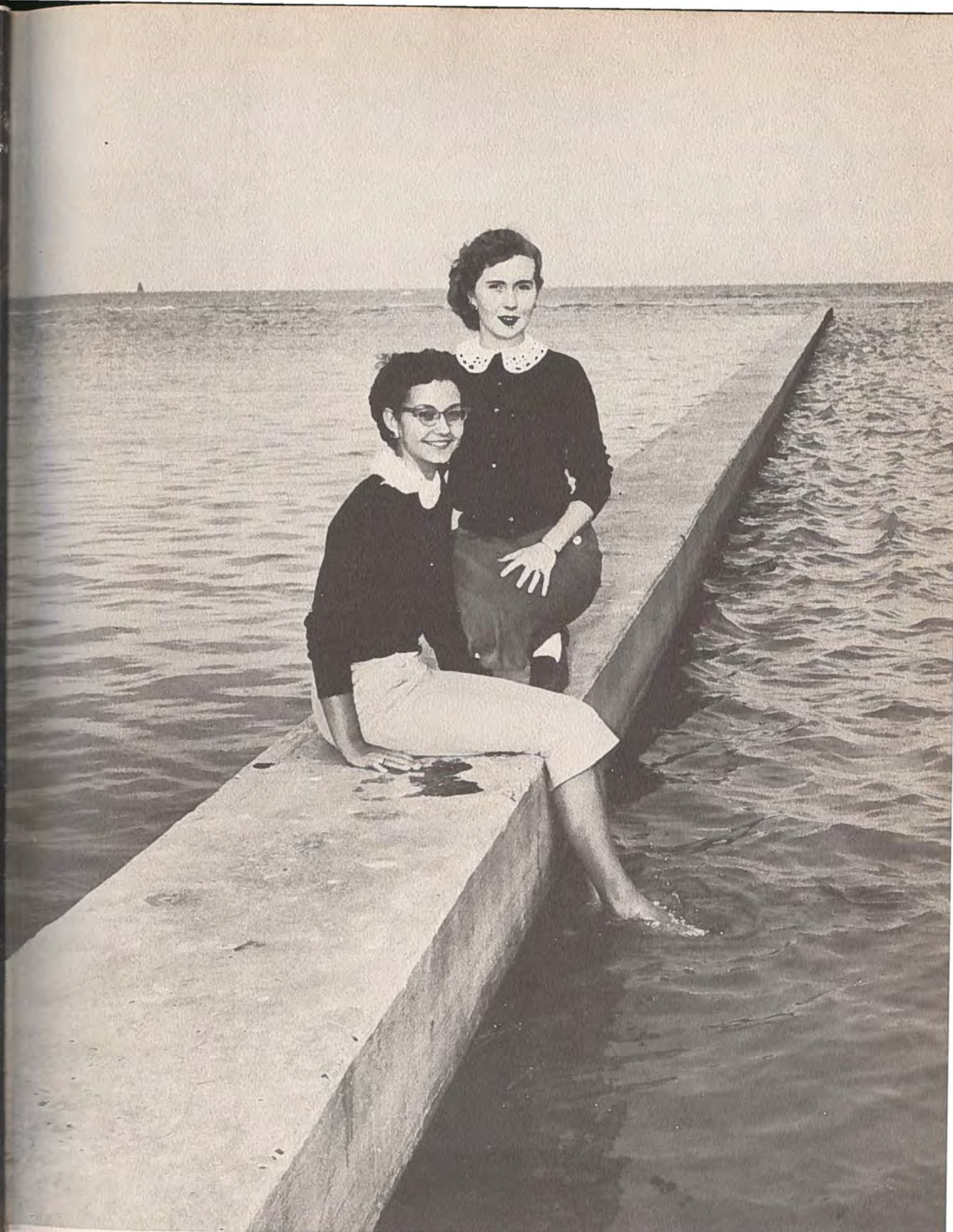
First Place, Chemistry Division, Science Fair, Gerry Ann Migl
 Drum Majorette Pat Speed
 Head Majorette Peggy Ralph
 Glass Goat Sharron Richards
 Homemaker of Tomorrow Camille Thom
 Prom Chairman Johnnie Lea Smith
 Lay-out Editors—Aurora Staff Marietta Villarreal
 and Johnnie Lea Smith
 News Editor—Crown Staff Marietta Villarreal
 Circulation Manager Oralia Pena
 First Place CBEA Bookkeeping contest Sofia Zdansky
 First Place CBEA Shorthand and spelling contest
 Lucille Prado
 First Place CBEA Typing II contest Marietta Villarreal
 Delegate to the THSPA convention Marietta Villarreal
 Mardi Gras Princesses Gerry Ann Migl and
 Martha Ruiz



MOST BEAUTIFUL SENIOR A
GEORGIA LEA DURHAM

10

MOST BEAUTIFUL SENIOR B
MARY ROSE PENA



MOST POPULAR SENIOR B
CHRISTINE MATTFELD

11

MOST POPULAR SENIOR A
MARY NAN ALLEN



MOST REPRESENTATIVE
SENIOR B

JOHNNIE LEA SMITH

MOST REPRESENTATIVE
SENIOR A

CAROLYN CARTER



Spring Festival "MISS LIBERTY" . . .

ROSE MARIE BENYS



DELIA A. ACUNA
"Diddy"

Junior C.C.D. 1, 2, 3, 4; Sodality 4; Civics Club 3, 4; Glee Club 1, 2, 3, 4.



GWEN ALLEN

Junior C.C.D. 2, 3; Roman Way 2, 3; Beaker Breakers 2; Vocation Club 3; Academy Angels 3, 4.



DOROTHY BOLLOM

Junior C.C.D. 1, 2, 3, 4; Pep Squad 1; Band 1, 2, 3, 4; Band Sergeant-at-Arms 4; Sodality 3, 4; Sodality Representative 3; Class Reporter 3.



MARY FRANCES BROWN

Junior C.C.D. 1, 2, 3, 4; Pep Squad 1; Band 1, 2, 3, 4; Beaker Breakers 1; Academy Angels 1, 2, 3.



MARY NAN ALLEN
"Nan"

Junior C.C.D. 1, 2, 3, 4; Pep Squad 1, 3, 4; Glee Club 2, 3, 4; Beaker Breakers 1, 4; Civics Club 3; Class Parliamentarian 2.



ROSE MARIE BENYS

Junior C.C.D. 1, 2, 3, 4; Debate Club 1; Roman Way 1, 2; Class President 1; Student Council 1; All-City Student Council 1; Class Treasurer 2; Most Beautiful 1; Pep Squad 1, 2, 3, 4; Cheerleader 3, 4; Beaker Breakers 4; Glee Club 1, 2; Academy Angels 1.



CAROLYN CARTER
"Carol"

Junior C.C.D. 1, 2, 3, 4; Pep Squad 1, 2, 3; Class President 3; Student Council 3, 4; Glee Club 3, 4; Glee Club Librarian 3; Most Representative 4; Music Appreciation 1; Academy Angels 1; Aurora Staff 4.



MAUREEN CARTER
"Queenie"

Junior C.C.D. 1, 2, 3, 4; Red Cross 1; Beaker Breakers 1; Glee Club 2, 3; Debate Club 2; Schola 3.



CAROL ANN FLOOD

Junior C.C.D. 4; Glee Club 3; Class Reporter 2, Sodalinity 3, 4.



JOYCE FLOYD

Junior C.C.D. 1, 2, 3, 4; Pep Squad 1; Beaker Breakers 1; Vocation Club 3; Red Cross 1, 2, 3, 4.



ANNA MARIA GARCIA

Junior C.C.D. 1, 2, 3, 4; Civics Club 4; Sodalinity 4.



SUE GARRETT

Junior C.C.D. 2, 3, 4; Roman Way 1; Beaker Breakers 2; Most Popular 3.



SUZANNE FRIEDMANN

"Suzie"

Junior C.C.D. 1, 2, 3, 4; Vocation Club 4; Beaker Breakers 1, 2; Beaker Breakers Secretary 2; Roman Way 2, 3; Roman Way Treasurer 3; Academy Angels 1, 2, 3, 4.



CORA LEE FRIESEN

"Chico"

Junior C.C.D. 1, 2, 3, 4; Band 1, 2, 3, 4; Pep Squad 1; Glee Club 1; Beaker Breakers 1; Debate Club 1, 2, 3; Roman Way 1, 2, 3; Civics Club 4; Class Reporter 2.



MARY LOUISE GERANT

"Mimi"

Junior C.C.D. 1, 2; Band 1; Pep Squad 2, 3; Class Secretary 2, 3, 4; Student Council 2, 3, 4; Student Council Secretary 3, 4; Most Representative 3; Sodalinity 4.



ANNE GONZALEZ

Junior C.C.D. 2, 3, 4; C.C.D. President 3; C.C.D. Reporter 4; Glee Club 2, 3; Civics Club 4; Debate Club 3, 4; Sodalinity 3; Beaker Breakers 2, 3; Class Reporter 2; Class Representative 3; Student Council 2, 3, 4; Reporter 3; All-City Student Council 4; Academy Angels 4.



HENRIETTA GONZALES
"Nicky"



LUCILLE GONZALES
"Lou"
Junior C.C.D. 1, 2, 3, 4; Sodality 2, 4; Civics Club 3; Glee Club 2; Beaker Breakers 2.



ANNETTE KARAM
Junior C.C.D. 1, 2, 3, 4; Sodality 1; Beaker Breakers 1; Civics Club 3, 4; Debate Club 4; Class Parliamentarian 1; Crown-Aurora Staff.



ANNITA KOCUREK



MACIE HOUSEMAN
Junior C.C.D. 1, 2, 3, 4; Roman Way 1, 2, 3; Glee Club 4; Red Cross 1.



MABEL JANECEK
Junior C.C.D. 1, 2, 3, 4; Sodality 2, 3, 4; Roman Way 1, 2; Best-All-Around 1; Class Representative 1; Class Vice-President 2, 3; Student Council 1, 2, 3; Cheerleader 2, 4; Academy Angels 1, 2, 3.



MARY LEE LEWIS
"Dimples"
Junior C.C.D. 1, 2, 3, 4; Pep Squad 1, 3; Beaker Breakers 1; Debate Club 1; Civics Club 3; Student Council 2; Glee Club 2, 3, 4; Class Secretary 2; Class Treasurer 3, 4; Band 1; Belle-of-the-Ball 3.



PAT LIESENFELD
Junior C.C.D. 3, 4; Schola 3, 4; Roman Way 3; Pep Squad 3; Debate Club 4; Sodality 4; Civics Club 4.



MARIA LOPEZ
Junior C.C.D. 1, 2, 3, 4; Sodality 1, 2; Civics Club 3, 4; Band 1, 2.



CHRISTINE MATTFELD
"Chris"
Junior C.C.D. 2, 3, 4; C.C.D. Reporter 3; Class Vice-President 2; Civics Club 3, 4; Student Council 2, 3, 4; Roman Way 2, 3; Roman Way Vice-President 2; Class Representative 3; Most Representative 2; Most Popular 4;



GERALDINE MIKULEC
"Rusty"
Junior C.C.D. 1, 2, 3, 4; Roman Way 1, 2; Class Parliamentarian 3; Class Reporter 2; Pep Squad 1, 2, 3, 4; Glee Club 1, 2, 3; Cheerleader 3, 4; Beaker Breakers 4; Academy Angels 1, 2.



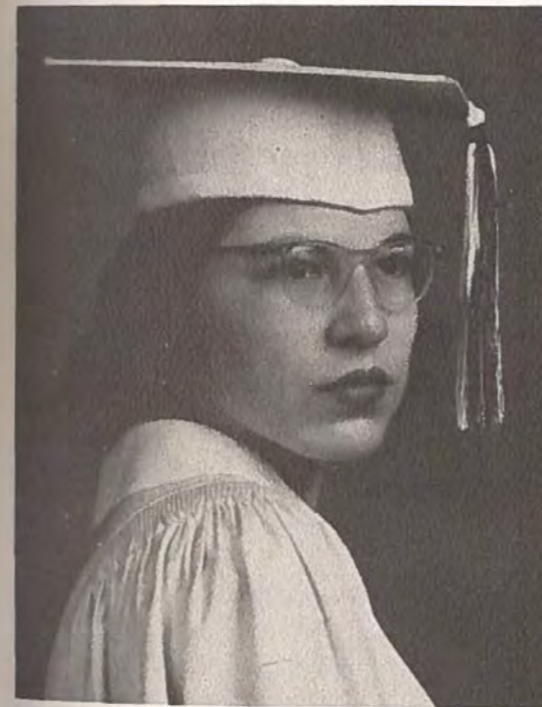
GLORIA G. MORENO
Junior C.C.D. 3, 4; Sodality 4; Glee Club 4; Civics Club 3, 4; Beaker Breakers 1; Class Representative 4; Student Council 4.



MILDRED McCULLOUGH
"Tince"
Junior C.C.D. 1, 2, 3, 4.



GERRY ANN MIGL
Junior C.C.D. 1, 2, 3, 4; Beaker Breakers 4; Beaker Breakers President 4; Roman Way 1, 2; Student Council 1; Class Vice-President 1; Pep Squad 1, 2, 3, 4; Cheerleader 2, 3, 4; Glee Club 1, 2; Debate Club 2, 3, 4.



EMILY NELSON
Junior C.C.D. 1, 2, 3, 4; Beaker Breakers 1; Roman Way 1, 2; Glee Club 1, 3, 4; Band 1, 2; Academy Angels 1.



GLADYS ORDNER
Roman Way 2; Glee Club 3, 4.



JOYCE M. OTTMERS



MARY ROSE PENA
Junior C.C.D. 1, 2, 3, 4; Pep Squad 1; Glee Club 1, 2, 3, 4; Roman Way 1, 2; Beaker Breakers 1; Civics Club 4; Academy Angels 1; Most Beautiful 4.



CLAUDIA MARIE PETZEL
Junior C.C.D. 1, 2, 3, 4; Vocation Club 4.



LUCILLE PRADO
Junior C.C.D. 1, 2, 3, 4; Glee Club 1, 2, 3, 4; Roman Way 1, 2; Roman Way Vice-President 2; Red Cross 3; Sodality 1, 4; Civics Club 3, 4; Class Vice-President 3; Class Representative 2; Student Council 2, 3, 4; Student Council Historian 3;



ORALIA TERESA PENA
Glee Club 1; Band 1, 2, 3.



JOYCE PETERS
Junior C.C.D. 1, 2, 3, 4; Red Cross 1, 2, 3; Beaker Breakers 1; Civics Club 3, 4; Sodality 4; Class Treasurer 2.



CELESTE PRAY
Junior C.C.D. 2, 3, 4; Roman Way 3; Pep Squad 2, 3; Beaker Breakers 4; Class Reporter 3; Academy Angels 2, 3.



PEGGY RALPH
"Peg"
Junior C.C.D. 1, 2, 3, 4; Pep Squad 1; Roman Way 1, 2, 3; Glee Club 1; Civics Club 3, 4; Civics Club Treasurer 3, 4; Majorette 2, 3, 4; Debate Club 1.



SHARRON RICHARDS
"Itty"

Junior C.C.D. 3, 4; Pep Squad 3; Most Popular 3;
Glee Club 2, 3, 4; Glee Club Librarian 3, 4;
Clean-Up Queen 3.



MARTHA THERESA RUIZ
"Peanut"

Junior C.C.D. 1, 2, 3, 4; Sodality 1, 2, 3, 4; Civics
Club 3; Band 1, 2.



JOHNNIE LEA SMITH
"Punky"

Junior C.C.D. 1, 2, 3, 4; Pep Squad 1, 2, 3; Pep
Squad Manager 3; C.C.D. Treasurer 2; C.C.D. Vice-
President 3; Class President 2, 3; Class Repre-
sentative 4; Student Council 2, 3, 4; All-City Stu-
dent Council 3; Glee Club 4; Most Representative
3, 4; Aurora Staff 4.



PAT SPEED
"J. P."

Junior C.C.D. 1, 2, 3, 4; Pep Squad 1; Vocation
Club 2; Majorette 1, 2; Drum Majorette 3, 4;
Sodality 4; Academy Angels 1, 2, 3.



AMALIA SALDIVAR



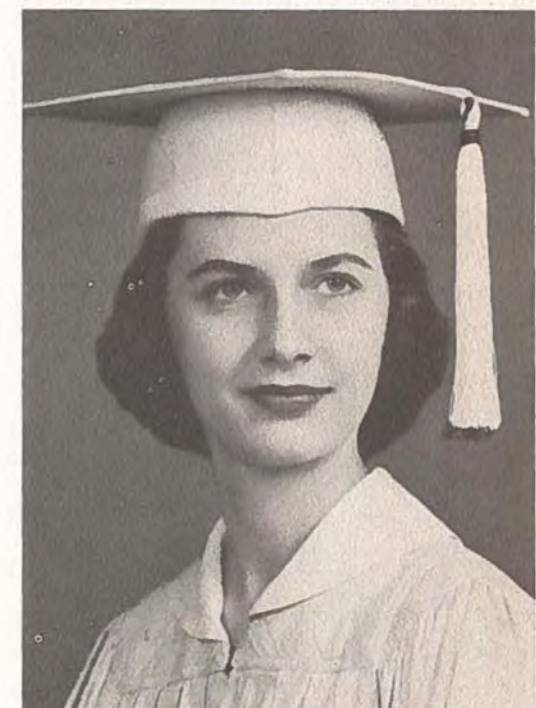
MARY MARGARET SHEARER

Junior C.C.D. 1, 2, 3, 4; Pep Squad 1, 2; Roman
Way 1, 2, 3; Beaker Breakers 2.



JENNIE MARIE STILLMAN

Junior C.C.D. 1, 2, 3, 4; Sodality 1, 2, 3, 4; Civics
Club 3.



MAGDALEN SULAK
"Maggie"

Junior C.C.D. 1, 2, 3, 4; Pep Squad 2, 3; Civics
Club 4; Most Beautiful 3; Glee Club 3, 4.



CAMILLE THOM
Junior C.C.D. 4; Sodality 4; Civics Club 4; Vocation Club 4.



PATSY TRAINOR
Junior C.C.D. 1, 2, 3, 4; Pep Squad 1, 2, 3, 4; Cheerleader 2, 3, 4; Roman Way 1, 2, 3; Roman Way Secretary 3; Roman Way Treasurer 2; Student Council 3, 4; Class Representative 3; Academy Angels 2.



MARIA CECILIA VARGAS
"Cecy"
Junior C.C.D. 1, 2, 3, 4; Sodality 2, 3, 4; Beaker Breakers 1; Civics Club 3.



ELIZABETH JEAN VETERS
"Libbie"
Junior C.C.D. 2, 3, 4; Beaker Breakers 1; Roman Way 1; Civics Club 3; Sodality 4.



KATHERINE TSCHOEPE
Junior C.C.D. 1, 2, 3, 4; Beaker Breakers 1; Pep Squad 1; Debate Club 2; Academy Angels 4.



JOYCE ULCAK
Junior C.C.D. 1, 2, 3, 4; Vocation Club 1, 4; Debate Club 1; Civics Club 3; Glee Club 1, 2, 3, 4.



MARIETTA VILLARREAL
Junior C.C.D. 1, 2, 3, 4; Red Cross 2; Red Cross Treasurer 2; Sodality 1, 2, 3, 4; Sodality Treasurer 3; Beaker Breakers 2, 3, 4; Beaker Breakers Parliamentarian 3; Glee Club 2; Academy Angels Cheerleader 1, 2; Civics Club 3; Crown-Aurora Staff 4.



GERALDINE WAHL
Junior C.C.D. 1, 2, 3, 4; Beaker Breakers 1.



PATRICIA WALDEN
"Pat"

Junior C.C.D. 2, 3, 4; Pep Squad 2, 3, 4; Beaker Breakers 2, 3; Roman Way 2; Sodality 4; Schola 3.



SHARON LEE WATERS

Junior C.C.D. 1, 2, 3, 4; Civics Club 3, 4; Debate Club 3; Vocation Club 2.



PHYLLIS THOMPSON



ANNE CASSIDY

Four of our classmates have already found their Ideal; they have chosen to make Incarnate Word Convent their permanent home. Let us wish them a 'bon voyage' on their journey through life. Let us also pause a moment or two and offer a little prayer, asking God to grant more vocations to Incarnate Word Academy girls; for "the harvest is indeed great, but the laborers are few."



BETTY ANN WHITWORTH
"Booper"

Junior C.C.D. 1, 2, 3, 4; Pep Squad 1, 2, 3; Class Treasurer 3; Music Appreciation 1; Academy Angels 1, 2;



SOFIE ZDANSKY

Junior C.C.D. 1, 2, 3, 4; Vocation Club 4.



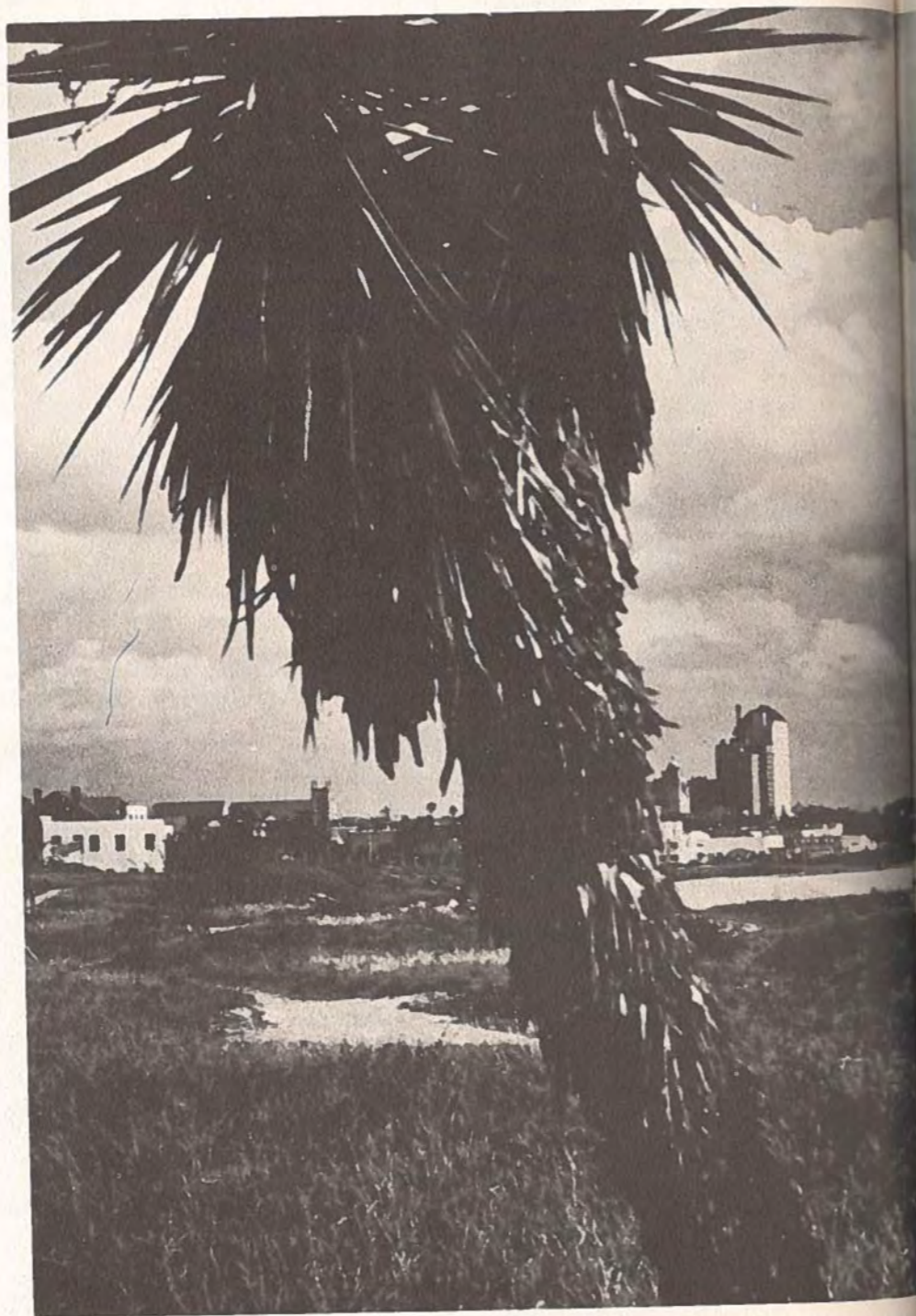
ORALIA VEGA



PEGGY ENRIGHT

UNDERCLASSMEN

IN THEIR HANDS remain the traditions of Incarnate Word Academy. Eager minds are anxious to grasp the knowledge and wisdom that lay before them. Girlhood days filled with studies and activities will always ring in their memories. The halls of Incarnate Word Academy resound with the echoes of anticipation spoken by these voices of youth.





JUNIOR OFFICERS ARE:

Mary Alice Berlanga, President; Mary Frances Whelan, Vice-President; Lucinda Guzman, Secretary; Louise Cline, Treasurer; Dorothy Park, Reporter; Laura Mae Gribbin, Parliamentarian; Susan Schubert and Noelie Shaw, Student Council Representatives; and Sponsor Sister Agnes Marie.

JUNIOR CLASS ACHIEVEMENTS

Student of the Month	Louise Cline
Junior C. C. D. Treasurer	Mary Alice Berlanga
Junior C. C. D. Teacher's Chairman	Laura Mae Gribbin
Our Lady of Grace Sodality Secretary	Norma Leal
I. W. A. Clean-up Queen	Nancy Skelton
Red Cross Representative for I. W. A.	Laura Mae Gribbin
Winners in Homemaking Style Show	Julianne Robinson
	Mary Frances Hatch
Glee Club Student Directress	Nancy Skelton



JUNIOR FAVORITES . . .

Most Popular . . .
DOROTHY PARKS

Most Beautiful . . .
JAMIE ADAMS

Most Representative . . .
MARY FRANCES WHELAN



Jamie Adams



Theresa Bauer



Mary Alice Berlanga



Joyce Carter



Beverly Chamulel



Mary Ann Montez



Mary Louise Netek



Carlene Neuman



Dorothy Parks



Diane Peck



Louise Cline



Gloria Jean Collier



Marianne Eckenrode



Louise Flusche



Mary Lou Garza



Patricia Pellegrino



Frances Pons



Fannie Mae Porter



Diane Prado



Sue Riley



Dora Garcia



Frances Marie Gilbert



Walieta Gold



Sally Gonzales



Jo Ann Gravett



Patricia Riek



Judy Ann Robinson



Louise Robinson



Mary Jessie Samperi



Susan Schubert



Laura Mae Gribbin



Alma Guerrero



Lucinda Guzman



Mary Frances Hatch



Elizabeth Kelly



Olga Segura



Judy Serna



Noelie Shaw



Nancy Skelton



Jackie Smith



Bernadette Kohl



Norma Leal



Dianne McCulloch



Mary McLaughlin



Mary Theresa
Montelongo



Patricia Suldon



Mary Bee Teasley



Beth Turcotte



Mary Frances Whelan



Betty Jean Williams



SOPHOMORE "A" OFFICERS ARE:

Brenda Chastant, President; Barbara Floyd, Vice-President; Betty Floyd, Secretary; Suzanne Chapman, Treasurer; Betty Bledsoe, Parliamentarian; Judy Heck, Reporter; Student Council Representatives, Darlene Aniol and Joan Franks; Historian, Judy Beshel; and Sponsor, Sister Jeanne Francis.

SOPHOMORE "A" ACHIEVEMENTS

Glee Club Reporter	Brenda Chastant
Latin Club Treasurer	Donna Carlucci
Latin Club Censor	Jane Derbes
Science Fair Winner	Imelda Lozano
Students of the Month	Naomi Doyle Judy Heck



SOPHOMORE "B" OFFICERS ARE:

Cleary Johnston, President; Carol Neckar, Vice-President; Gloria Sherek, Secretary; Cindy Murphy, Treasurer; Kay Vreeland, Reporter; Karon Walker, Parliamentarian; Loretta Skrobarcek, Historian; Carol Leonard, Student Council Representative; Betty Tower, Student Council Representative; and Sister Adrian Clare, Sponsor.

SOPHOMORE "B" ACHIEVEMENTS

Band President	Geraldine Petru
Glee Club Representative	Carol Leonard
Science Fair Contest Winners	Cleary Johnston, Anne Mabry
Science Fair Co-Winners	Carol Leonard, Wynona Myers



SOPHOMORE A FAVORITES . . .

Most Beautiful . . .
JUDY BESHEL

Most Popular . . .
BRENDA CHASTANT

Most Representative . . .
ROSIE FUENTES



SOPHOMORE B FAVORITES . . .

Most Popular . . .
CLEARY JOHNSTON

Most Representative . . .
GLORIA SHEREK

Most Beautiful . . .
KAY VREELAND



Darlene Aniol



Vern Ella Arceneaux



Rose Berlanga



Judy Beshel



Jo Ann Blaschke



Kaye Dunn



Eddy Durham



Patricia Ann Falcon



Barbara Floyd



Betty Floyd



Betty Bledsoe



Theresa Bledsoe



Jo Charles Brownlow



Donna Carlucci



Helen Joyce Carter



Gail Fontana



Joan Franks



Rosie Fuentes



Mary Alice Galvan



Julieta Gaytan



Rosario Chapa



Suzanne Chapman



Brenda Chastant



Barbara Chatman



Barbara Christian



Dora Luz Guerrero



Velia Margarita Guerrero



Judy Heck



Linda Hernandez



Mary Lucille Huegele



Christy Kinsey



Daisy Clifton



Lela Beth Crow



Maxine Dement



Jane Derbes



Naomi Doyle



Antonia Jiminez



Judy Don Jordon



Imelda Lozano



Mary Lou Longoria



Elvira Lozano



Darlene Aniol



Vern Ella Arceneaux



Rose Berlanga



Judy Beshel



Jo Ann Blaschke



Kaye Dunn



Eddy Durham



Patricia Ann Falcon



Barbara Floyd



Betty Floyd



Betty Bledsoe



Theresa Bledsoe



Jo Charles Brownlow



Donna Carlucci



Helen Joyce Carter



Gail Fontana



Joan Franks



Rosie Fuentes



Mary Alice Galvan



Julieta Gaytan



Rosario Chapa



Suzanne Chapman



Brenda Chastant



Barbara Chatman



Barbara Christian



Dora Luz Guerrero



Velia Margarita Guerrero



Judy Heck



Linda Hernandez



Mary Lucille Huegele



Christy Kinsey



Daisy Clifton



Lela Beth Crow



Maxine Dement



Jane Derbes



Naomi Doyle



Antonia Jiminez



Judy Don Jordon



Imelda Lozano



Mary Lou Longoria



Elvira Lozano



Cleary Johnstone



Carol Ann Leonard



Elinor Mabry



Pansy Jo Maddox



Renate Maier



Sylvia Salas



Nancy Mae Samperi



Gloria Sherek



Loretta Skrobareck



Sandra Slosson



Jean Mayfield



Wynona Meyers



Rosie Mirabal



Cindy Murphy



Carol Neckar



Mary Sue Southerwood



Patricia Sturm



Dolores Ann Stuckly



Hettie Kaye Swinnerton



Glenda Thomson



Jo Ann Nelson



Jacqueline Newman



Modena Nickens



Dorothy O'Docharty



Ester Otero



Rachel Torres



Betty Tower



Georgene Trice



Angelica Vasquez



Mary Ann Veit



Geraldine Petru



Mary Pollock



Kay Priour



Gloria Guadalupe
Rivera



Phyllis Robinson



Kay Vreeland



Mary Jo Wagner



Karon Diana Walker



Mary Zapata



FRESHMAN "A" OFFICERS ARE:

Marcia Chamberlain, President; Katherine Ahr, Vice-President; Patricia Hughes, Secretary; Marilyn de Cordova, Treasurer; Wanda Franz, Reporter; Helen Havelka, Parliamentarian; Ofelia Garcia, Student Council Representative; Mary Hebert, Student Council Representative; and Sister Anna Maria, Sponsor.

FRESHMAN "A" ACHIEVEMENTS

Honorable Mention to CGAA AllStar Basketball Team Pat Haven
 Student of the Month September Betty Jane Koller



FRESHMAN "B" OFFICERS ARE:

Sherri Ann Moore, President; Sandra Treptow, Vice-President; Barbara Ann Worrel, Secretary; Louise McMahon, Treasurer; Barbara Mathieu, Reporter; Genevieve Wahl, Parliamentarian; Madeline Meehan, Student Council Representative; Mary Lou Smith, Student Council Representative; and Sister Mary Anne, Sponsor.

FRESHMAN "B" ACHIEVEMENTS

First Place Winners in Science Fair Sandra Treptow, Julia Uehlinger,
 Beth Scogin
 Student of the Month, January Mary Helen Montuori



FRESHMAN A FAVORITES . . .

Most Beautiful . . .
MARILYN DE CORDOVA

Most Representative . . .
MARCIA CHAMBERLAIN

Most Popular . . .
PAT HUGHES



FRESHMAN B FAVORITES . . .

Most Popular . . .
SANDRA TREPTOW

Most Representative . . .
SHERRI MOORE

Most Beautiful . . .
BARBARA WORREL



Katherine Ahr



Carol Ann Allen



Dorothy Jean Allen



Bernadine Benys



Marilyn Bermingham



Yolanda Fernandez



Patricia Ferris



Mary Franks



Wanda Franz



Mary Gansle



Doretta Borton



Mary Hope Bronson



Vivian Broussard



Kathryn Brown



Barbara Busch



Ofelia Garcia



Anna Maria Gonzalez



Carol Gonzalez



Betty Lynn Greusel



Judy Guinn



Mary Jo Cernoch



Marcia Chamberlain



Marilyn de Cordova



America Cortinas



Elizabeth Cox



Imelda Guzman



Patricia Harris



Helen Havelka



Patricia Haven



Mary Hebert



Sharon Crockett



Charlene Crow



Cecilia Davis



Eva De Leon



Peggy Donahue



Beverly Held



Geraldine Hoelscher



Pat Hughes



Evelyn Jackson



Geraldine Johnson



Mary Patricia Dunne



Rose Margaret Dunne



Rebecca Elizalde



Carmen Enriquez



Martha Fears



Michelene Kilgore



Mary Alice Kohl



Betty Jane Koller



Sylvia Leal



Margaret Leland



Patricia Linney



Barbara Mathieu



Louise McMahon



Edna Medina



Madeline Meehan



Beth Scogin



Margaret Lee Scoot



Elizabeth Sefcik



Diane Shackelford



Joyce Shirley



Kathleen Merryman



Geraldine Mikulik



Shelby Miller



Sherri Moore



Margaret Mora



Melinda Sierra



Mary Lou Smith



Elaine Stoddard



Mary Ann Stoner



Jeanette Stryk



Mary Helen Montouri



Connie Nickens



Patricia O'Docharty



Patricia Paar



Barbara Parr



Eloise Tolin



Sandra Treptow



Barbara Ann Tudyk



Julia Uehlinger



Diamantina Vela



Aurora Patino



Estella Patino



Linda Patterson



Many Nan Polasek



Barbara Poole



Emily Vesely



Mary Villarreal



Genevieve Wahl



Rhoda Walden



Mary Nell Wallace



Shelley Rice



Anne Rodholm



Pat Rogers



Lucille Saldivar



Mary Jo Watson



Maureen White



Marian Lee Pinson
Braille Student



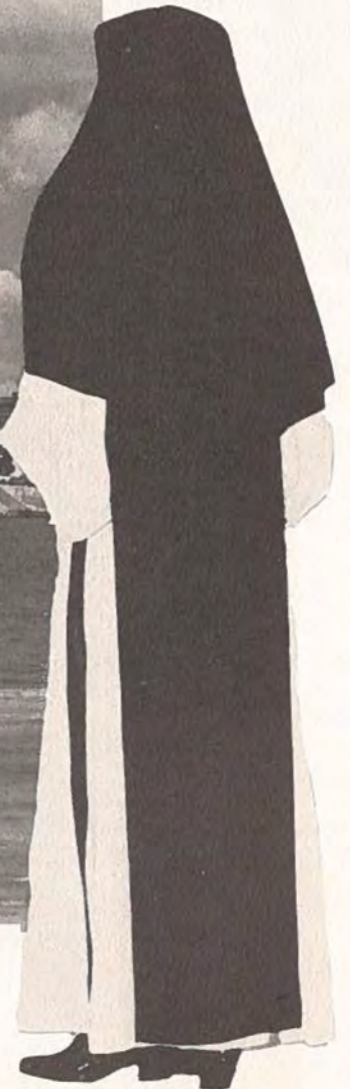
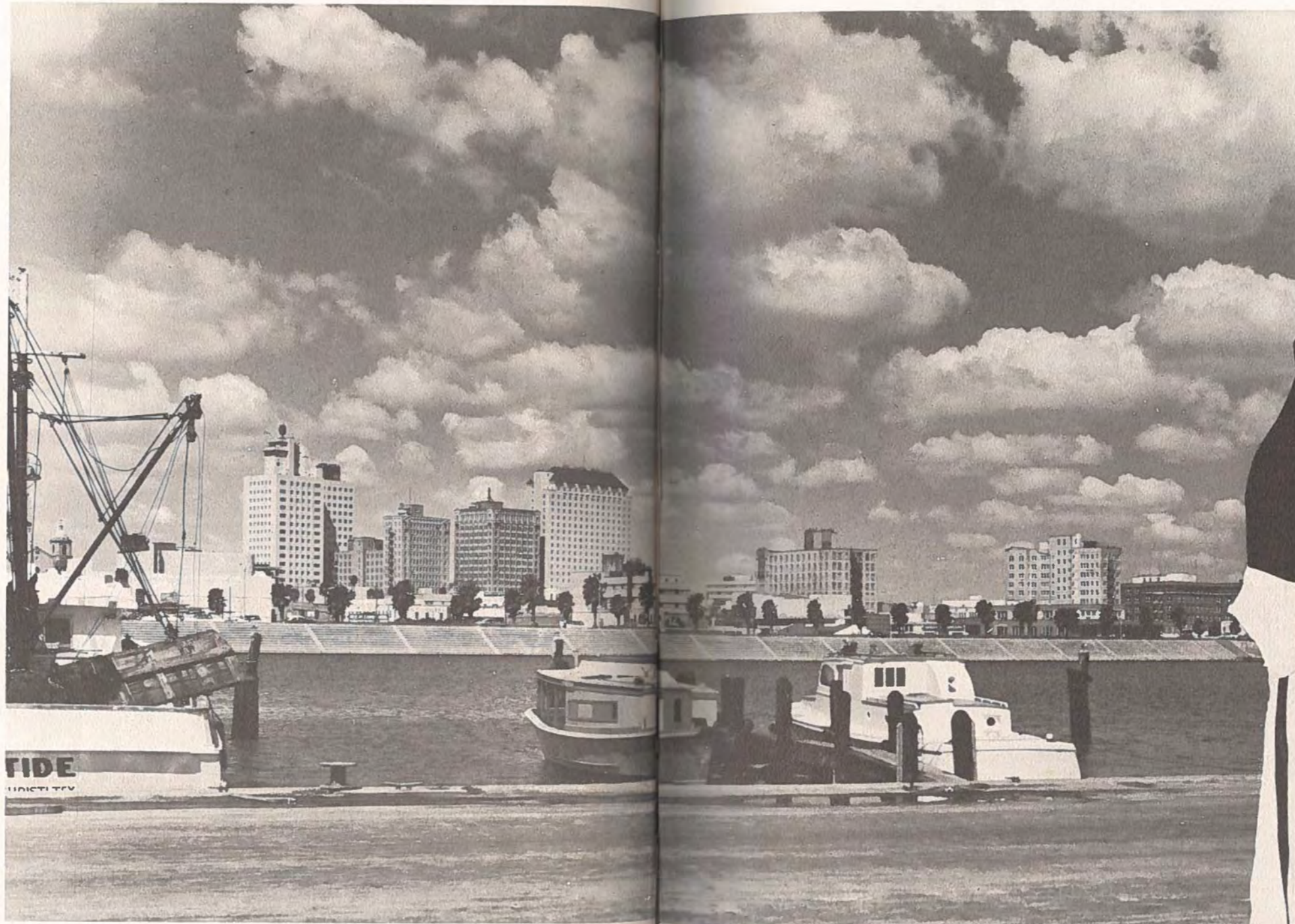
Barbara Worrell



Barbara Williams

CLASSES

OUR BOATS OF WISDOM, our ships to success. In class work the students find knowledge, experience and individual attention to be aids to the completion of an all-around girl. Here, in the classrooms, under the supervision of the excellent teachers, we share ideas, express ourselves and grow in wisdom.





RELIGION . . .

Students at Incarnate Word Academy learn religion and live it faithfully. They begin each day with attendance at Mass in the convent chapel. The highest art, the art of Christian living, is stressed in religion, which is a four-year required course. This helps to develop in each girl a full, deep understanding of her faith. Students are prepared for the future through guidance, counsel, and study.

Religion teachers at I.W.A. are Sister Anna Maria and Sister Agnes Marie, Religion IV; Father Francois, Religion III; Sister Adrian Clare, Religion II; and Sister Mary Anne, Religion I.

Several priests come in once a week to instruct the girls. They are: Father Celestine Murray and Father Alvin Tengler, senior instructors; Father Robert Clark, freshman and sophomore instructor; Father John Clarkson, sophomore instructor, and Father Patrick Higgins, freshman instructor.

Members of the parish sodalities form the "Living Rosary" which is recited each year on May 1, as a tribute to Mary, the queen of May.



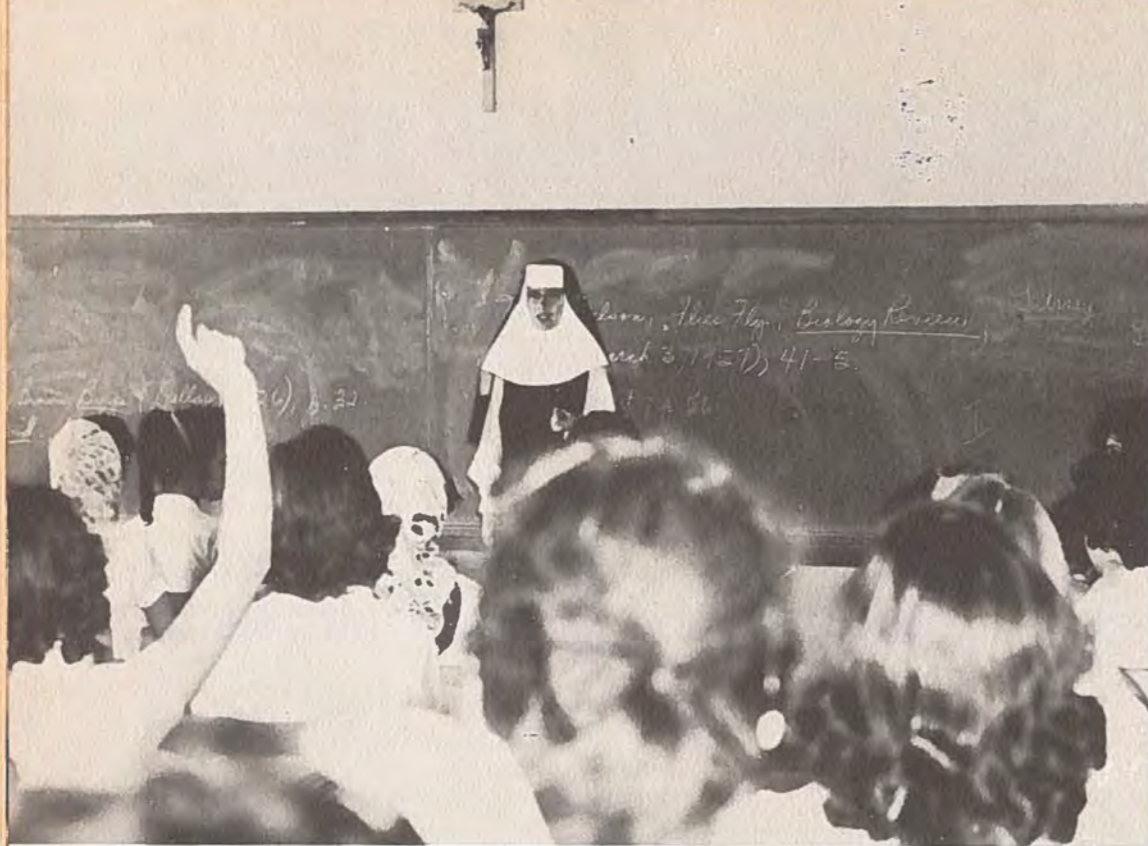
SODALITIES

The sodalities and religious organizations form a large part of religious education. Most of the parishes have a sodality, and there is also one at school.

The Legion of Mary, of which there is a newly formed unit at I.W.A., is a purely spiritual organization which has no social aspects. It is modelled on the Roman Army and is called the Legion of Mary for this reason. Its purposes are personal sanctification and sanctification of neighbors.



Mary Frances Whelan crowns the Blessed Virgin on World Sodality Day, May 5. The ceremony in which all sodalities participated, was held at the Cathedral.



Sister Adrian Clare explains to her sophomore English class the correct procedure in compiling a Bibliography.

ENGLISH...

English seeks to instill in each girl the ability to convey her thoughts effectively, either through speech or through writing. The study of grammar, punctuation, and composition enables each student to develop her ability of expression. Each succeeding chapter increases in each student the appreciation of good literature. Incarnate Word Academy has three English teachers on its well-staffed faculty. Sister Mary Luke teaches seniors and freshmen, Sister Agnes Marie teaches juniors and freshmen, and Sister Adrian Clare is English teacher of the sophomores and juniors.



Freshman English students, under the supervision of Sister Agnes Marie, patiently diagrams sentences.



LIBRARY

Incarnate Word Academy's spacious library provides an aid to students in the development of a reading appreciation of literature and intelligent reading habits.

A well equipped and varied program of literary matter has been an influential force in supplying a well-rounded knowledge of events to students.

Marcia Chamberlain and Sandra Treptow read the summary of one of the books displayed in National Catholic Book Week exhibit.

SPEECH

Speech strives to assist each student to achieve effective oral expression. Emphasis is placed on public speaking, but the ordinary conversation is not neglected. This course is offered to add confidence and increase poise and assurance, thus developing an eloquent speaker. Sister Agnes Marie teaches it.

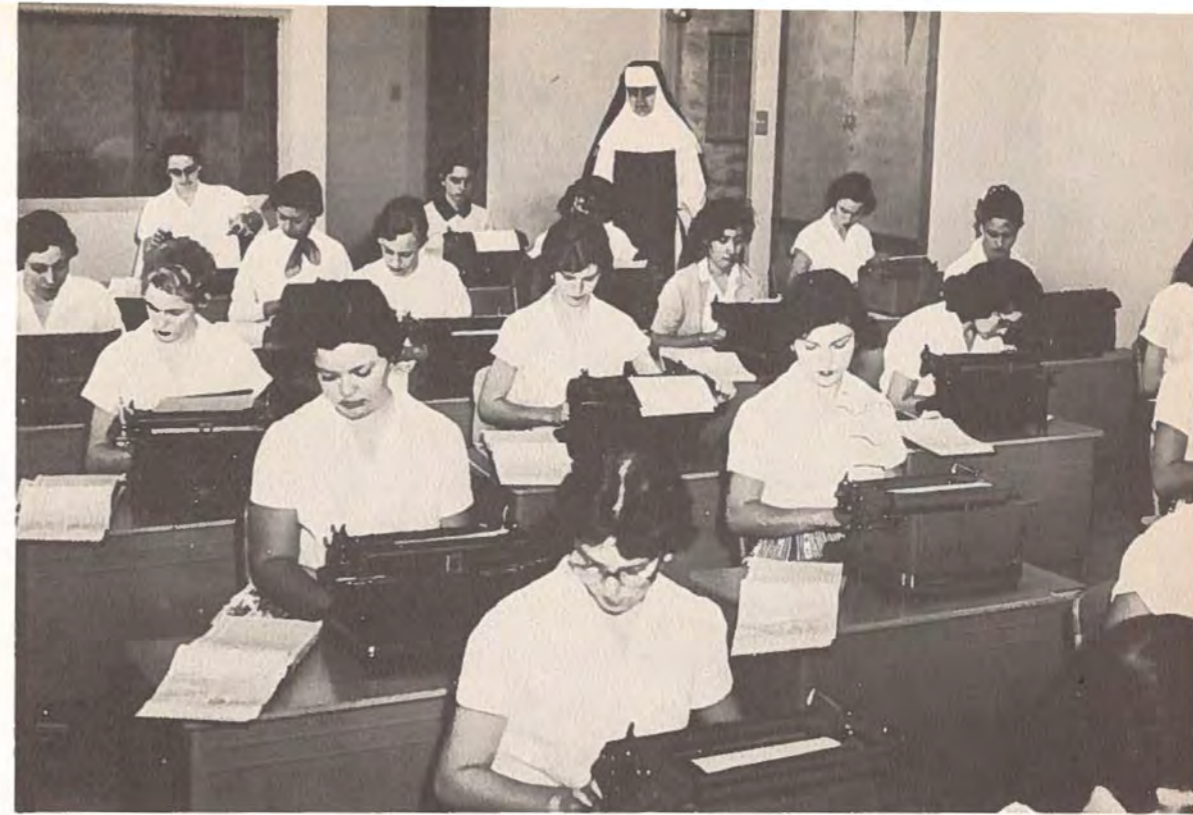
Speech students, Suzanne Friedmann, Maureen Smith, Gloria Collier, Beth Turcotte, and Mary Frances Brown act out a scene from the speech program, a satire based on the television program, "This Is Your Life."



Various reactions are manifested by the students as they watch the speech students present their program.



Sister Anna Maria helps one of her Algebra II students solve a problem on the chalkboard. Sister Anna Maria also teaches bookkeeping and Algebra I.



Sister M. Anne, Typing I, II teacher, checks the posture of her junior typing I students during a timing.

MATHEMATICS...

Algebra, general math, and geometry are courses designed to develop methods of solving problems. These subjects provide training in the use of measurements and numbers. Each problem solved is a stepping stone in the field of reason.

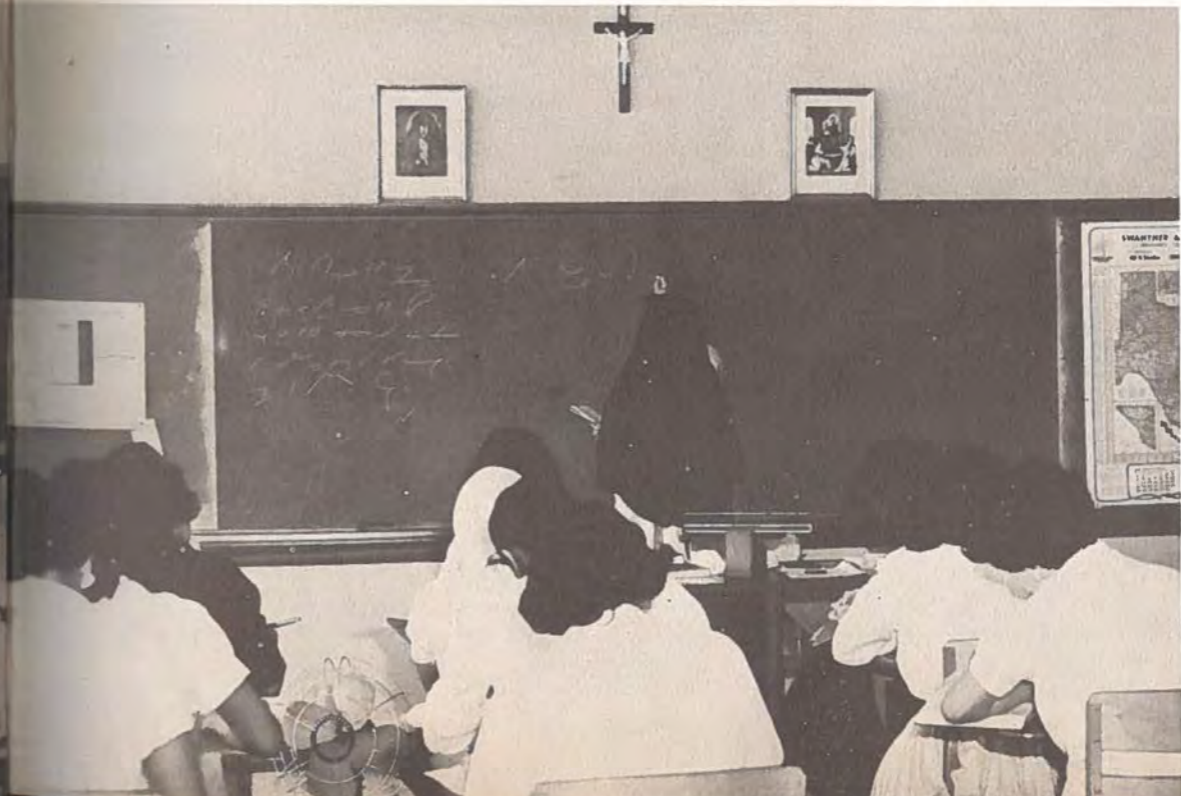


Sister Anne explains a problem in the sale of merchandise to her freshmen general math students.

COMMERCIAL COURSES...

STENOGRAPHY—TYPING—BOOKKEEPING

Commercial courses at I.W.A. include stenography, typing, and bookkeeping. Together with the subject matter, the girls are taught correct business etiquette. These courses lay the foundation for successful careers in the future.



Sister M. Xavier, shorthand and typing II teacher, puts a brief business letter on the board for her classes.

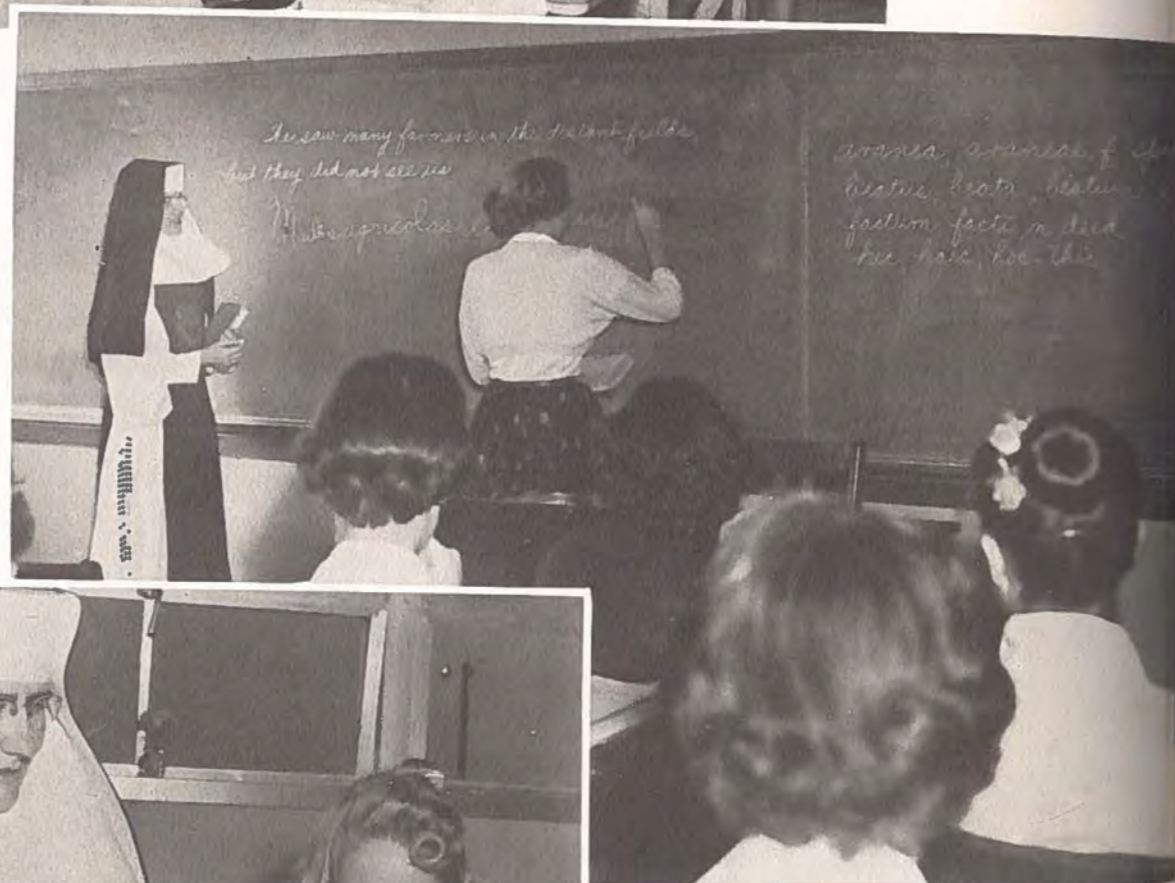
Sister Anna Marie teaches bookkeeping as part of the commercial course.



Left: Spanish I students exercise their fluency on a tape recorder while Sister Mary George looks on. Betty Jane Koller takes her turn as Anne Rodholm and Dorothy Jean Allen await theirs.

Sister Mary Augustine is the Spanish II teacher.

Below: Carol Ann Allen, Latin I student, writes her translation on the board for Sister Luke, who also teaches Latin II.



Marion Lee Pinson, special student, is taught her lesson in Braille by Sister Mary George, principal.



LANGUAGES . . .

Latin and Spanish are the two foreign languages taught at Incarnate Word. Both provide a student with a variety of information about the country, the way of life, its heroes, and great artists and their works.

Alma Guerrero, Mary Louise Netek, Diane Prado, Louise Flusche, and Pat Pelligrino, under the supervision of Sister James Marie, complete a daily project in homemaking.



Above: Pat Speed checks the hemline of a skirt made in homemaking class.

HOMEMAKING . . .

Today the homemaker is in the public spotlight. Books are written on her duties and responsibilities. Incarnate Word offers students the opportunity to become polished homemakers. The modern, well-equipped homemaking department sets the scene for sewing, cooking, and child care.

Right: Sister James Marie demonstrates the correct use of a button-hole attachment to senior homemaking students Pat Speed, Celeste Pray, and Suzanne Friedmann.





SOCIAL SCIENCES . . .

AMERICAN HISTORY — WORLD HISTORY — GOVERNMENT

Social sciences include World history, American history, and American government. The two histories acquaint students with the events of the past. Government study molds good citizens. Knowledge of current events is impressed on the girls and are included in each class. Sister Mary Stanislaus is the social science teacher.

Patsy Trainor and Catherine D'Unger dress in costumes for a research conducted by the Nueces County Historical Society.



Members of the chemistry class, Mary Ann Chilen, Gerry Migl, Pat Pelligrino, Nan Allen, Marietta Villarreal, and Rose Marie Benys perform an experiment while Sister Jeanne Francis supervises as Rose Marie mixes two chemicals.

NATURAL SCIENCES . . .

BIOLOGY — GENERAL SCIENCE — CHEMISTRY

The Science Department endeavors to infer in each student a deep understanding of God's world of living things. The courses include general science, biology, and chemistry. Each subject increases and multiplies in each student a full-realization of God's almightiness.



Vincent B. Tarlton, local attorney at law, addresses a government class on the jury system, its importance, benefits, and obligations.



Biology students pay close attention as Sister Jeanne Francis carefully explains a chapter in their workbook. General science is also taught by Sister Jeanne Francis.



The Glee Club, under the direction of Mrs. Tom Boyd, Jr., gave many performances. A smaller group, the Traveling Choir, made trips to festivals in San Antonio and sponsored and appeared in the Second Annual Catholic Choral Music Festival held in Corpus Christi.

MUSIC DEPARTMENT

Sister Mary Joan, head of the IWA Music Department, gives a few pointers to Bernadette Kohl. Other music teachers who have pupils among IWA students are Sister Adrian Clare, Sister Mary Augustine and Sister Immaculada.



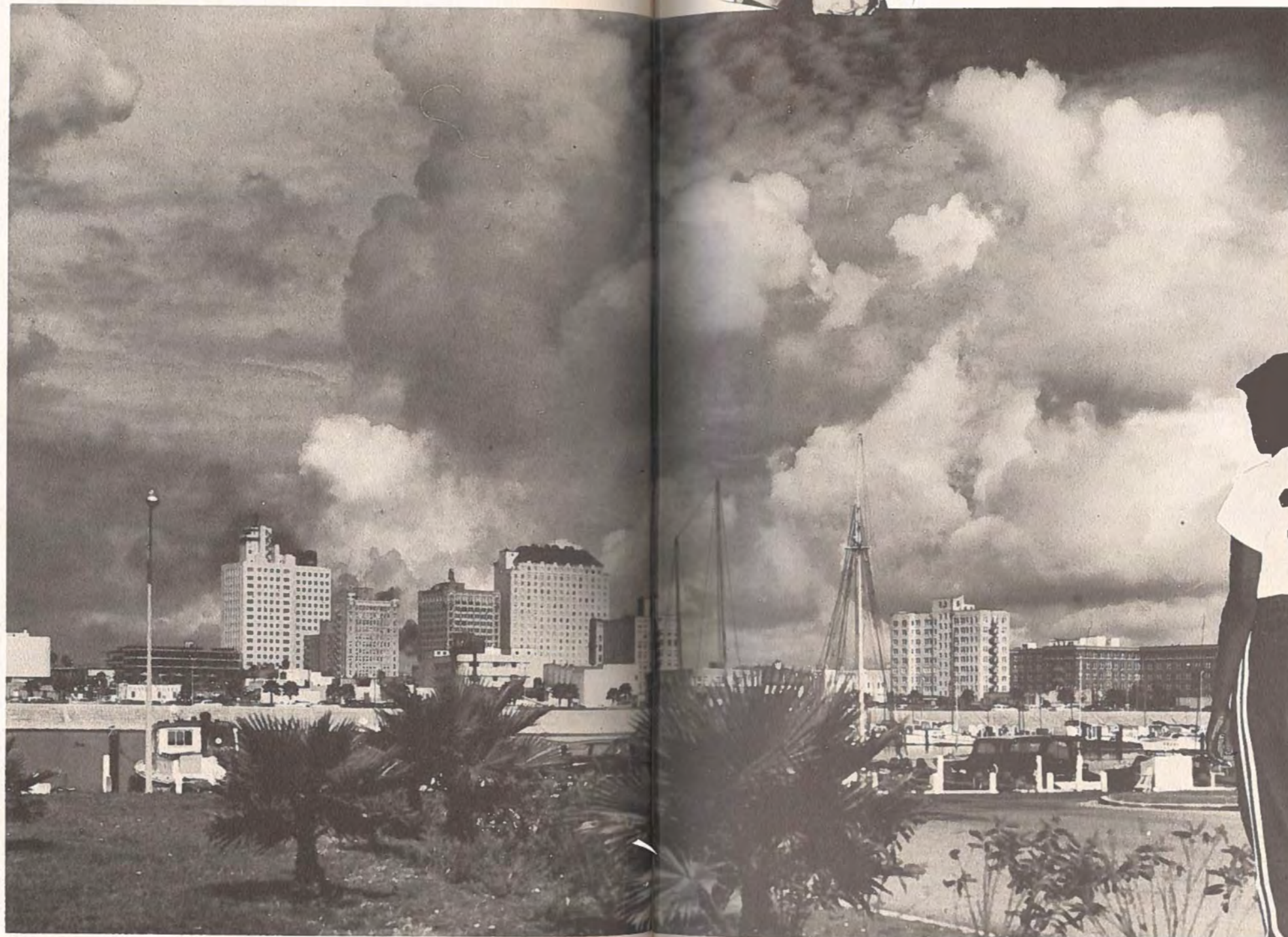
The combined band of Incarnate Word Academy and Corpus Christi College Academy under the direction of Mr. D. W. McCready is in its fourth year of existence. The band plays at football games, church and school affairs, marches in the Buccaneer Days Parade, and sponsors a Music Festival which is attended by many bands.



Students of the Music Appreciation class listen to the tape recording of a well known symphony while Sister Mary George supplies additional information concerning the composer and background.

ORGANIZATIONS

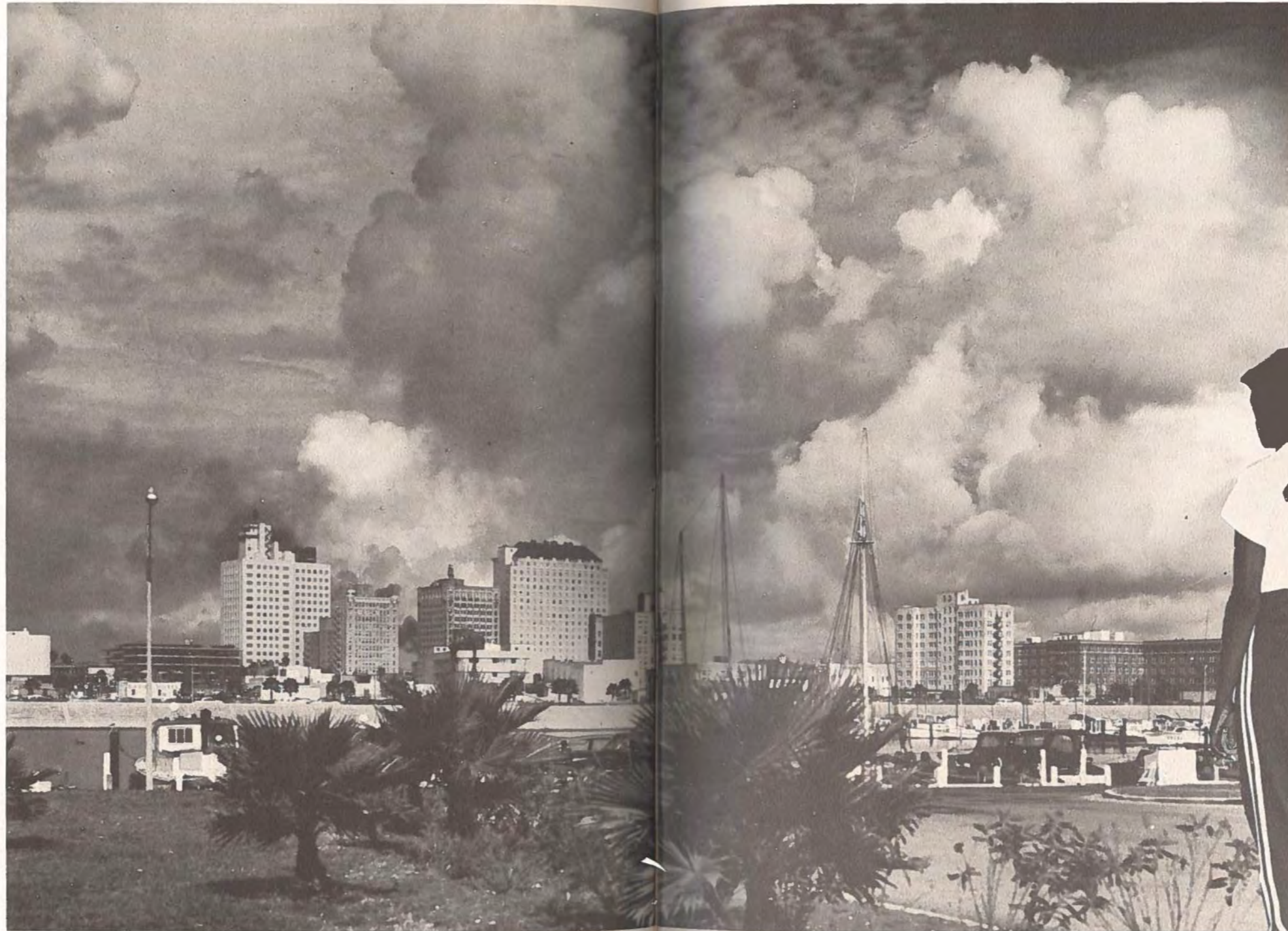
*H*ERE WE LEARN self government and the success that group action can obtain. In meetings and activities we learn that cooperation, group spirit and harmony in united action, are stepping stones to success in the world beyond the classroom.



and x-ray labs. Talks promoted an interest in

ORGANIZATIONS

HERE WE LEARN self government and the success that group action can obtain. In meetings and activities we learn that cooperation, group spirit and harmony in united action, are stepping stones to success in the world beyond the classroom.





STUDENT COUNCIL

Student Council officers are: Anne Gonzalez, President; Carolyn Carter, Vice-President; Mary Louise Gerant, Secretary; Johnnie Lea Smith, Treasurer; Christine Mattfeld, Parliamentarian; Patsy Trainor, Historian; Lucille Prado, Reporter. Sponsors are Sister Agnes Marie and Sister Adrian Clare.

Organized in 1951, the Student Council has done much to accomplish the goals for which it was founded—to develop in the student the power of self government by teaching her, through active participation students and schools, and thus to secure the training necessary later in life to be a good citizen. Among the many projects undertaken by the Council this year were the annual Favorites' Dance, the Belle-of-the-Ball Dance, Future Freshman Day, and gifts of fifty dollars to three parishes for Christmas.



Student Council members listen as Anne Gonzalez, president, taps the gavel for order.



BEAKER BREAKERS

Incarnate Word Academy Science Club, is affiliated with the Science Clubs of America and the Texas Academy of Science. The club is a major function in the activities of I.W.A.

Officers: Anne Gonzales, Treasurer; Geraldine Mikulec, Secretary; Celeste Pray, Parliamentarian; Mary Ann Chilen, Reporter; Gerry Migl, President and Rose Marie Benys, Vice-President, plan the agenda for the year, Sister Jeanne Francis is the sponsor.



Carl B. Young, Jr., Red Cross First Aid and Water Safety Director, spoke to Beaker Breakers members on narcotic addiction.

Projects for the year included trips to Spohn Hospital labs, operating rooms and x-ray labs. Talks by members of scientific professions helped further the aims of the club and promoted an interest in scientific careers.

JUNIOR CONFRATERNITY OF CHRISTIAN DOCTRINE



Helpers of the C.C.D. were busy throughout the year making holy cards and posters to aid the Teachers and Apostles in their work.



This year the officers were:
Sharon Waters, Chairman of the Apostles; Christine Mattfeld, President; Sponsors: Sister Mary Anne, Sister Agnes Marie, Sister Mary Luke; Mary Alice Berlanga, Treasurer; Lucille Prado, Vice-President; Laura Mae Gribbin, Chairman of Teachers; Mary Rose Peña, Chairman of Helpers; Joyce Floyd, Secretary; Anne Gonzales, Reporter

Though it was only organized in the fall of 1953 this, the largest organization in the school, has done much to further its purpose, winning souls for Christ. The active members of the Junior C.C.D. are divided into three distinct groups: Apostles, Teachers, and Helpers. The Junior C.C.D. meets in separate rooms for the three different groups and their individual sponsors. The Associate members do not have meetings but their purpose is to aid the Junior C.C.D. by their prayers.



Several of the editors check over copy with the publications sponsor, Sister Jeanne Francis. Georgia Durham and Peggy Enright are on the left, with Marietta Villarreal, Oralio Peña and Annette Karam on the right.

The Crown

Incarnate Word Academy · Corpus Christi, Texas

CROWN STAFF



"International First Place" "All Texas" "All Catholic"

Published Monthly By and For the Students Of
INCARNATE WORD ACADEMY
Corpus Christi, Texas

Under the Direction of the Journalism Class

Principal	Sister Mary George
Faculty Sponsor	Sister Jeanne Francis
Feature Editor	Catherine D'Unger
News Editor	Marietta Villarreal
Make-up Editor	Annette Karam
Exchange Editor	Peggy Enright
Business Manager	Georgia Durham
Circulation Manager	Oralia Pena
Reporters:	Brenda Chastant, Lucille Prado, Dorothy Park, Carol Flood, Anne Gonzalez, Kay Vreeland, Judy Heck, Camille Thom, Mary Ann Chilen, Barbara Mathieu, and Wanda Franz.



ACADEMY ANGELS

BASKETBALL TEAM

Around the circle, beginning left: Sue Garrett, senior, manager; Karon Walker, sophomore, guard; Barbara Williams, freshman, forward; Margaret Leland, freshman, forward; Pat Haven, freshman, forward; Gwen Allen, senior, guard; Anne Gonzalez, senior, guard; Gail Fontana, sophomore, guard; Modena Nickens, sophomore, forward.

The Angels played games both in Corpus Christi and in the home towns of other Catholic High Schools. They amassed a total of 375 points to their opponents' 265. In the Catholic Girls' Athletic Association tournament, Suzanne Friedmann, Angels' Captain, was selected as a member of the 6-girl All Star, while Pat Haven, freshman guard, earned Honorable Mention. High Scorer of the year is Suzanne with an average of 22.5 points per game.



Another athletic sport engaged in this year by I.W.A. girls was softball. Though only playing two games in the season, the others being rained out, the ANGELS softball team split two, with a win over the WAVES of the Naval Air Station and a loss to Dominican High School in Galveston. ANGELS will always have many pleasant memories of trips to various cities with their teammates and Coach and Sponsor, Sister Jeanne Francis.

ANGELS shown are: Top row, left to right: Pat Haven, outfielder; Diane Peck, first baseman; Elizabeth Kelly, second baseman; Sister Jeanne Francis, coach; Julianne Robinson, outfielder; Mary Frances Whelan, outfielder; Mary Alice Kohl, shortstop. Bottom row, left to right: Emily Vesely, outfielder; Barbara Williams, third baseman; Pat Hughes, pitcher; Karon Walker, pitcher; Margaret Leland, catcher; Mary Helen Montuouri, outfielder, and Mary Frances Hatch, outfielder.

ACADEMY ANGEL

SOFTBALL TEAM



CIVICS CLUB

Organized in the fall of 1955 under the sponsorship of Sister Mary Stanislaus, the Civics Club has grown rapidly. The basic qualifications for membership are to have or be taking a social science course and have an interest in government.

Officers of the Civics Club: Camille Thom, Reporter; Annette Karam, Parliamentarian; Peggy Ralph, Treasurer; Elizabeth Kelly, Vice-President; Patsy Trainor, Secretary; and Christine Mattfeld, President, were filled with anticipation of plans for Civics Club activities.

Club members pose with Governor Price Daniel and Senator Bruce Reagan, as they paused during their tour of the State Capitol, February 11.



Many social activities are planned for the boarding students of I.W.A.

Among them is the annual Christmas party which is given before school closes for the holidays.



Those who planned the activities for the Boarders' Club, a club for all students who live at I.W.A. Boarding School, were Mary Zapata, Parliamentarian; Geraldine Petru, Reporter; Georgia Lee Durham, President; Theresa Bauer, Secretary; Susan Shubert, Treasurer; and Mary Ann Chilen, Vice-President.

BOARDERS' CLUB

I. W. A. MOTHERS' CLUB

Mothers' Club members were kept busy throughout the school year making plans and sponsoring successful activities. The Mothers' Club is affiliated with the National Council of Catholic Women. Major projects for the year of '56-'57 were the Style Show luncheon, the card party, and the Mother and Daughter Banquet. The organization is an auxiliary unit of the school whose purpose is to assist the faculty in any project.

Officers for the '56-'57 term were (seated) Mrs. Oscar Castro, parliamentarian; Mrs. Fred Leonard, president; Mrs. Gene Murphy, vice-president; (standing) Mrs. John Friedmann, treasurer; and Mrs. Peter Dunne, corresponding secretary. Not pictured are Mrs. Mary Smith, reporter; and Mrs. Ruth Janecek, recording secretary.



Shown at left are Mrs. Ruth Janecek, Mrs. Fred Leonard, and Mrs. Gene Murphy, discussing plans for the year.

I. W. A. ALUMNAE ASSOCIATION

The Incarnate Word Academy Alumnae Association has an active membership of about 250 graduates and ex-students, representing classes from many of the 86 years I.W.A. has been in existence. To further the purpose of perpetuating old friendships and forming new ones, the Alumnae has a monthly meeting, most of which are social in nature.



Officers for 1956-57 were: Mrs. James Pope, parliamentarian; Miss Betty Kay Morris, recording secretary; Mrs. James H. Johnston, vice-president; Miss Lorraine Coldway, corresponding secretary. Treasurer was Mrs. Tom Pogue. Sister Jeanne Francis is Federation Sister.



Activities this year included Guest Night in November, a formal Christmas Dance, a buffet supper in February and a semi-formal dance honoring the Seniors of '57 in April.

Benefit affairs included the Pie Booth in the K. of C. Fall Carnival and the Annual Ham Dinner in January. Proceeds from these activities purchased draperies for the cafeteria windows and walls and a coffee urn of a 480 cup capacity.

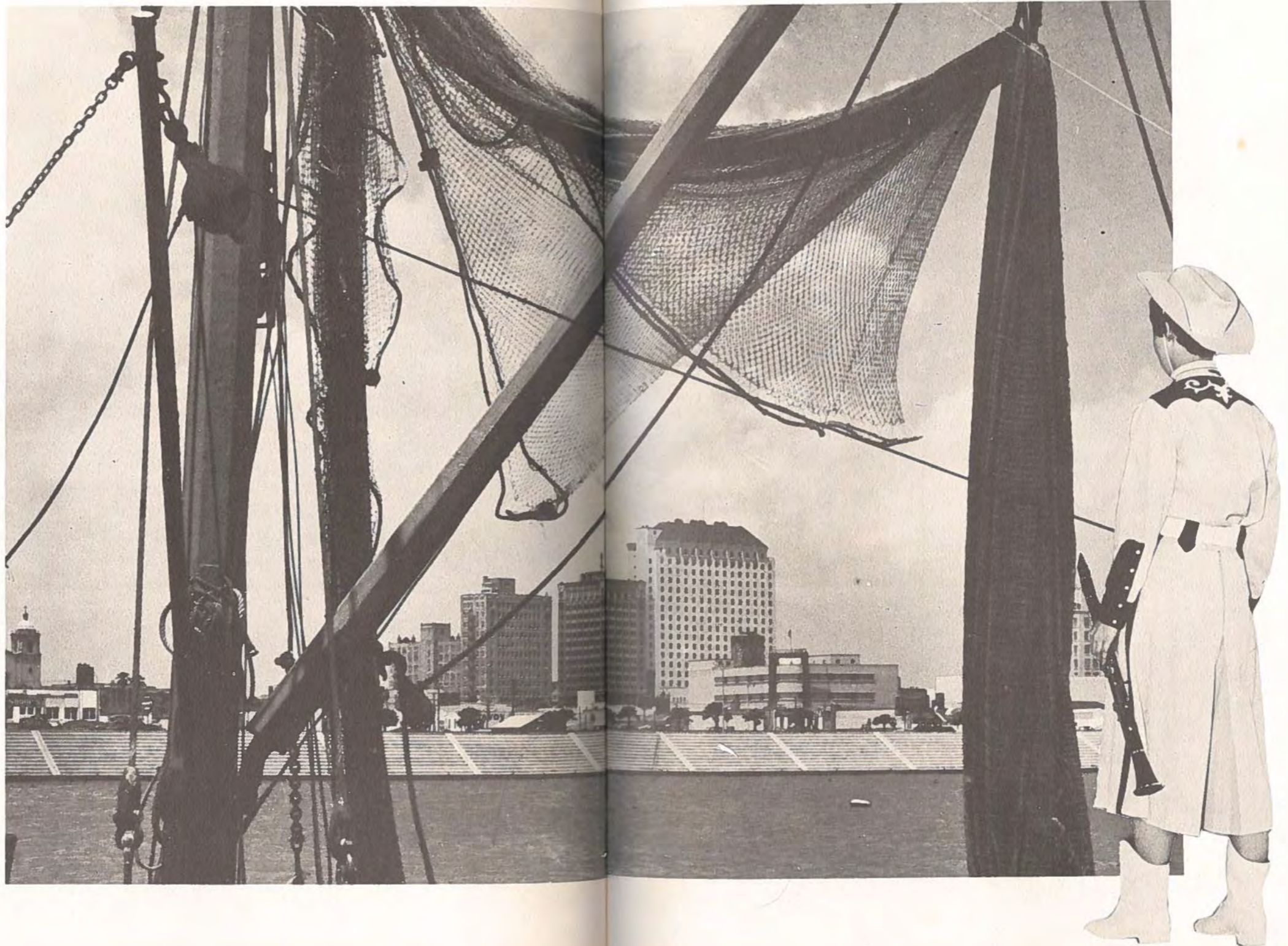
The highlight of the year, however, is the Ivy Chain ceremony which takes place as a part of the annual Homecoming in May. The chain signifies the unity of the members with the incoming members of the graduating class. At this time, new officers were installed for the coming year and graduates of the current class were formally welcomed into the Association. Solemn Benediction of the Blessed Sacrament was given by His Excellency, Bishop Garriga, and a reception in the cafeteria followed. Family and friends attended.

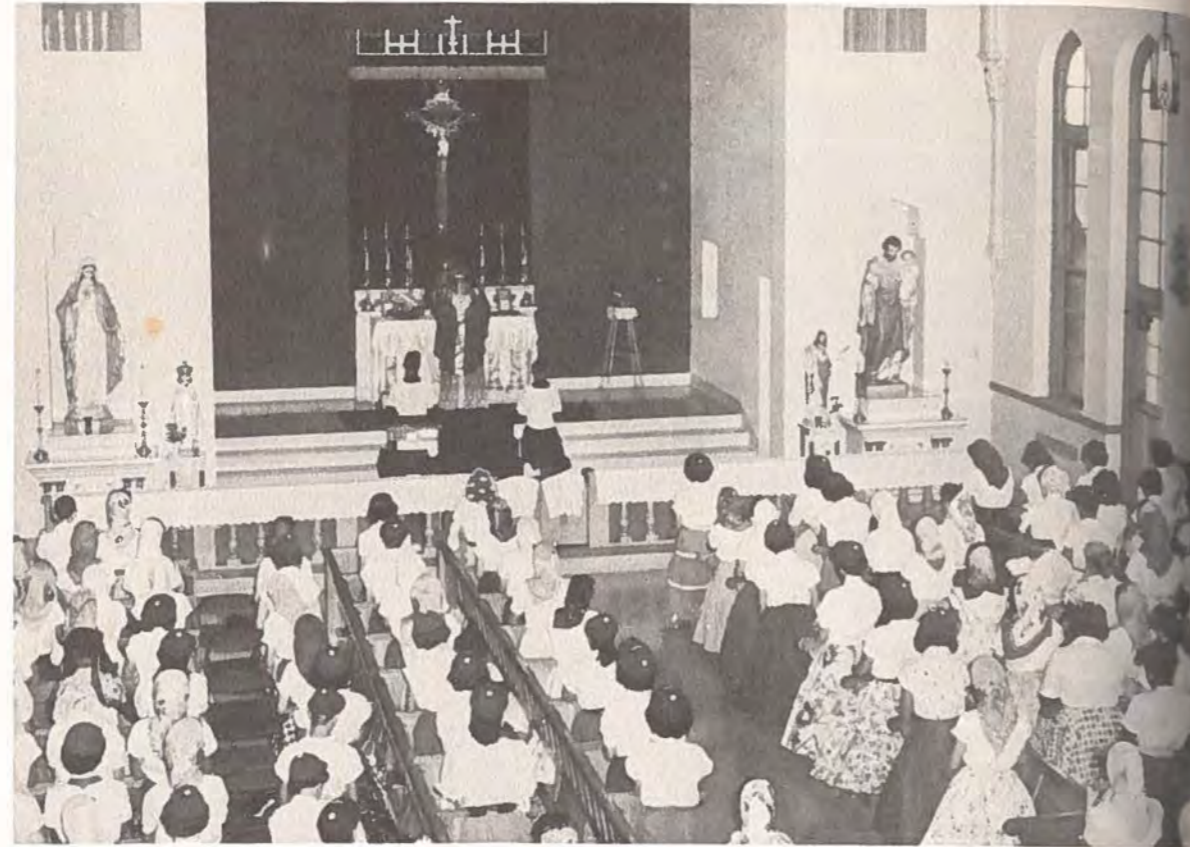


Treasurer Mrs. Tom Pogue

CALENDAR OF EVENTS

Each month was filled with activity for students of Incarnate Word Academy. We will endeavor to paint for you a pen and camera picture of school life at IWA for 1956-57. From September to May the school was a scene of action.





Blessings of the Holy Ghost were invoked on the students of Incarnate Word Academy for the coming year at the traditional Mass of the Holy Ghost. Celebrant of the Mass, on September 7th, was Rt. Rev. C. R. Mullen, P.A., pastor of St. Patrick's Church.



Incarnate Word Academy's former convent chaplain was appointed auxiliary Bishop of Corpus Christi and titular Bishop of Citrus by His Holiness Pope Pius XII. Announcement of the appointment was made in the chapel by Bishop M. S. Garriga, D.D., L.L.D., Bishop of Corpus Christi. Consecration ceremony for the Bishop-elect Adolph Marx, D.D., J.C.D., was scheduled for October 9th, in the Corpus Christi Cathedral.



STUDENTS STRIVE FOR SUCCESS...

Faces of freshmen Wanda Franz, Paddy Dunn, Barbara Parr, Vivian Broussard, and Connie Nickens were wreathed in smiles as Initiation Day drew to a close. 107 "Fish" were initiated by the seniors on September 27th, in an annual activity designed to welcome the newcomers and to acquaint them with high school life.

Eager anticipation reigned at Incarnate Word Academy preceding the reception of senior rings in a ceremony presided over by the Most Rev. Adolph Marx, D.D., J.C.D., auxiliary Bishop of Corpus Christi, on September 17th, in the convent chapel. Following the Mass, breakfast was served in the school cafeteria. Bishop Marx attended, as well as the principal, senior sponsors, and many of the seniors' mothers. At the right, proud seniors, Nan Allen, Mabel Janecek, Gwen Allen, Marietta Villarreal, Betty Ann Whitworth, Joyce Ulcak, Pat Walden, Mildred McCullough, and Katherine Tschoepe, triumphantly display and admire the fruits of their labor.



OCTOBER.... OUTDOORS...

Outstanding authorities in the field of yearbook production were speakers at the South Texas Yearbook Conference which was attended by members of the Aurora staff; Marietta Villarreal, Anne Gonzalez, Catherine D'Unger, and Annette Karam.

As the crisp cool days of October progressed, the Angels progressed also.

They were busy as bees getting ready for the coming basketball season.

Here the team manager Sue Garrett adjusts the numerals on Captain Suzanne Friedmann's uniform.

Between fittings for new red and white uniforms, trying out new equipment, readying the court, the Angels had to find time to put in long hours of practice.

South Texas Yearbook Conference

DEL MAR AUDITORIUM

MONDAY, OCTOBER 1, 1956

CORPUS CHRISTI, TEXAS



OVERFLOWING WITH EXCITEMENT...

"Your chariot awaits, mi-ladies," says Darlene Aniol to Anne Gonzalez and Carolyn Carter while Mary Frances Whelan looks on, as they prepare to depart for the South Texas District Convention of Student Councils. The convention, attended by 925 delegates, was held at Flour Bluff High School on October 20th.

Mickey Roach and Mary Bee Teasley typify the spirit of fun which prevails at I.W.A. throughout the year.

Looking over the lists of favorite nominees are some of the candidates themselves. Sitting are Marcia Chamberlain, Betty Bledsoe, and Sandra Treptow. Standing are Phyllis Robinson, Mary Frances Whelan, Magdalene Sulak, Sofie Zdansky, and Sharron Richards.

Favorites were announced at the annual student council-sponsored Favorites' Dance, October 27th, amid gaily and excitement.





NOVEMBER NOSTALGIC MOMENTS

November 16th, found several I.W.A. alumnae and their moderator, Sister Jeanne Francis, in Fort Worth, which was the scene of the IFCA annual convention. Mrs. John G. Walker, to the right of the speaker, is an IWA graduate and is Treasurer of the Texas Chapter.

Under the competent supervision of Mr. D. W. McCready, the band spent many hours of practice in preparation for homecoming festivities.

Announcement of football sweetheart, Rose Marie Benys, climaxed a gala evening.



"Cherry Orchard," by Anton Chekov, was the play presented by IWA and CCCA students at the Play Festival in San Antonio. Micky White, Mary Ann Chilen, and Robert Bumb, members of the cast, performed for the student body at a special rehearsal in the Bandroom.



NICE MEMORIES

Ex-students of IWA and their guests were entertained at the alumnae's annual gala "Fun Night," November 12th, in the school cafeteria. Costumes were worn and prizes were awarded for the most outstanding attire.



Senior "A's" were the joyous recipients of a boat ride which was won by their vigorous participation in a campaign to sell advertising space in the Aurora.

The "Buccaneer" was chartered for an hour trip to honor the class.

DECEMBER DECORATIONS

Patsy Trainor added last minute touches to the Christmas tree in the school lobby before the school Christmas party on December 21st.



The Incarnate Word Academy Glee Club wished His Excellency, the Most Reverend M. S. Garriga, D.D., LL.D., Bishop of Corpus Christi, a Merry Christmas in a musical manner.



I.W.A. Glee Club members paused for a moment between Christmas songs atop the gigantic "Christmas Tree" to listen to Bishop Garriga express his delight and appreciation.

Various Catholic Schools in Corpus Christi took turns singing and playing on the "Living Christmas Tree" erected on the lawn of His Excellency's home on Ocean Drive.

DECORUM DELIGHT

Incarnate Word Academy students assisted in serving and preparing food for the annual Mexican Supper in the Incarnate Word Cafeteria, on December 7.



MEXICAN SUPPER
Benefit of Sisters of Incarnate Word
Incarnate Word Cafeteria, 2930 South Alameda
FRIDAY, DECEMBER 7th, 1956 — 5 to 8 p.m.
ADULTS . . . 1.00

Camille Thom, Incarnate Word Academy senior, proudly admires her gold pin awarded for being chosen "Betty Crocker Homemaker of Tomorrow." The nation-wide test is taken by all the seniors annually. This year the testing program was held on December 4, but the results were not announced until later.



Jo Charles Brownlow takes Sharron Richard's deposit for her AURORA, during the yearbook sales campaign, as Joyce Ottmers gets money ready while waiting her turn.

JANUARY JOY

Father Jude Speyrer conducted the 1957 Retreat at Incarnate Word Academy. Each year a few days are set aside to provide students with an opportunity for recollection and meditation. January 21 through 24 were the dates for this annual event.



Betty "Twinkletoes" Tower practices her "ballet dance" as Carolyn "Canary" Carter waits to rehearse her "solo", for the assembly at the Student Council coke party given after the students returned from the Christmas holidays.



A group of Sophomores reflect the intense absorption so typical of Incarnate Word Academy students during the first semester examinations, January 16, 17, and 18.

JUBILATION . . . JUDGING . . .



Beth Scogin, Julia Uehlinger, and Sandra Treptow, freshmen, check last minute details of their science exhibit which won first place in the First Annual Incarnate Word Academy Science Fair. The exhibition was open to the public during the week of January 21 through 25.



Eager, anxious smiles greet Sister Jeanne Francis, yearbook sponsor, as Catherine D'Unger, Rose Marie Benys, Annette Karam, Georgia Durham, Marietta Villarreal, Connie Nickens and Carolyn Carter await their Wheat photos taken by Fritz Herr, January 8.

FEBRUARY
FUN

Patsy Trainor, Sharron Richards, Rose Marie Benys and Georgia Lee Durham, runners-up for Belle-of-the-Ball, look at the announcement of "Belle", read at the Valentine dance sponsored by the Student Council in the cafeteria, February 9.



Suzanne Friedmann, senior, and Angels' captain, rated top honors at the Catholic Girl's Athletic Association in Houston. Suzanne made the six-girl All-Star team which was composed of the top players in the meet. At right, she views the medal given her by the association.



Mary Nan Allen, 1957 Belle-of-the-Ball, proudly displays the Valentine bouquet presented to her by the Student Council at the Fifth Annual Belle-of-the-Ball Dance.

FROLIC...
FRATERNITY...

The traveling choir represented I.W.A. in San Antonio on February 15 at the annual music festival at Incarnate Word College. The thirty-seven girls, under the direction of Mrs. Tom Boyd, Jr., were rated "Superior."



The Very Reverend Father Walter J. Buehler, S.M., President of St. Mary's University in San Antonio, was one of the brotherhood speakers at I.W.A. The students observed Brotherhood Week which is sponsored by the National Conference of Christians and Jews.

Pictured at the right are Rabbi Harvey E. Wessel of Tyler, Texas, Rev. Morrow of San Antonio, Father Buehler, and Patrick J. Dunne of Corpus Christi. I.W.A. was commended by the speakers for its practice of brotherhood.



MARCH... MERRIMENT...

Barbara Williams, (center, right) reaches for the tip off as Margaret Leland (left) and Suzanne Friedmann stand ready, during the Dominican High School of Galveston—I.W.A. Angels game. The Angels defeated the Cagers 36 to 35.



Elizabeth Kelly models her own creation at a Style Show sponsored by the homemaking classes in the school cafeteria, March 3.



Four Sophomore B's, Rachel Torres, Hettie Kay Swynnerton, Georgene Trice, and Carol Neckar presented an original Calypso Dance as part of the annual assembly in honor of Reverend Mother Patricia, March 15. Each homeroom contributed a different act to give the assembly some variety.



MODELS... MARDI GRAS...

Jimmy Duncan, (standing) turns to recognize a member of the All-City Student Council at the meeting which was held March 11 in the Incarnate Word Library.



Gerry Ann Migl, senior, was one of the three I.W.A. students to be presented in "The Court of Jewels" in the annual NCCW-sponsored Mardi Gras, at Memorial Coliseum, March 5.

Mary Ann Castro and Martha Ruiz were also presented at this gala event.



Incarnate Word Academy students were honored by Reverend Mother Patricia at a sumptuous breakfast in the school cafeteria after the Mass celebrated on the Feast of the Annunciation, March 25. The Most Reverend Bishop Adolph Marx was celebrant.



APRIL
AWARDS



Music was the order of the day during the Third South Texas Catholic Band Festival, April 5, and the Second Annual Catholic Choral Festival April 6. Both events were I.W.A. sponsored. Both band and choir of I.W.A. made fine showings in these annual events.



Incarnate Word Academy again carried off honors when four out of eleven I.W.A. entries were awarded honors in the Second Annual South Texas Science Fair. Here Mary Jo Wagner, one of the winners, is shown with her exhibit.



Angels were honored at a dinner and presented with their letters at the end of the basketball season. Other honored guests were Mrs. John Friedmann and Mrs. H. R. Purcell, Jr., of Houston.



ALUMNAE . . .
ACTIVITIES . . .

The highlight of Future Freshman Day activities, April 10, was the Senior Burial. Even though it was mock burial, among the black-clad seniors of '57 were more than a few "non-crocodile tears."



"Um m m m—that looks good"! Seniors, Anne Gonzales, Lucille Prado and Mary Rose Peña and escorts, help themselves to refreshments at the dance, honoring the Seniors of '57, given by the Alumnae Association April 22 in the I.W.A. cafeteria.



Texas welcomed the long awaited rain that fell abundantly from the heavens on April 27. The entertainment which was to have been part of the Spring Festival had to be canceled but the box-supper was held. The program was presented at a later date.

SPRING FESTIVAL
INCARNATE WORD ACADEMY
 2930 S. Alameda — Corpus Christi, Texas

Concessions — Open at 3:00 P.M.
 Program—5:30 P.M. — Supper—Right After Program

Admission \$1.00 — Includes ENTERTAINMENT and SUPPER

SATURDAY, APRIL 27, 1957



This display presented by the high school sodality won second place in the World-Sodality Day exhibits held at Cathedral on May 5.

MAY MARY

Members of the home-making class modeled their creations for the student body as part of their final grade. Anne Gonzalez, first from left, won first prize of a \$15,000 gift certificate given by Bruners.



Johnnie Lea Smith, prom chairman, Carolyn Carter and Christine Mattfeld, co-chairmen, arrange a pink and white centerpiece used in the prom theme of "Southern Summer."

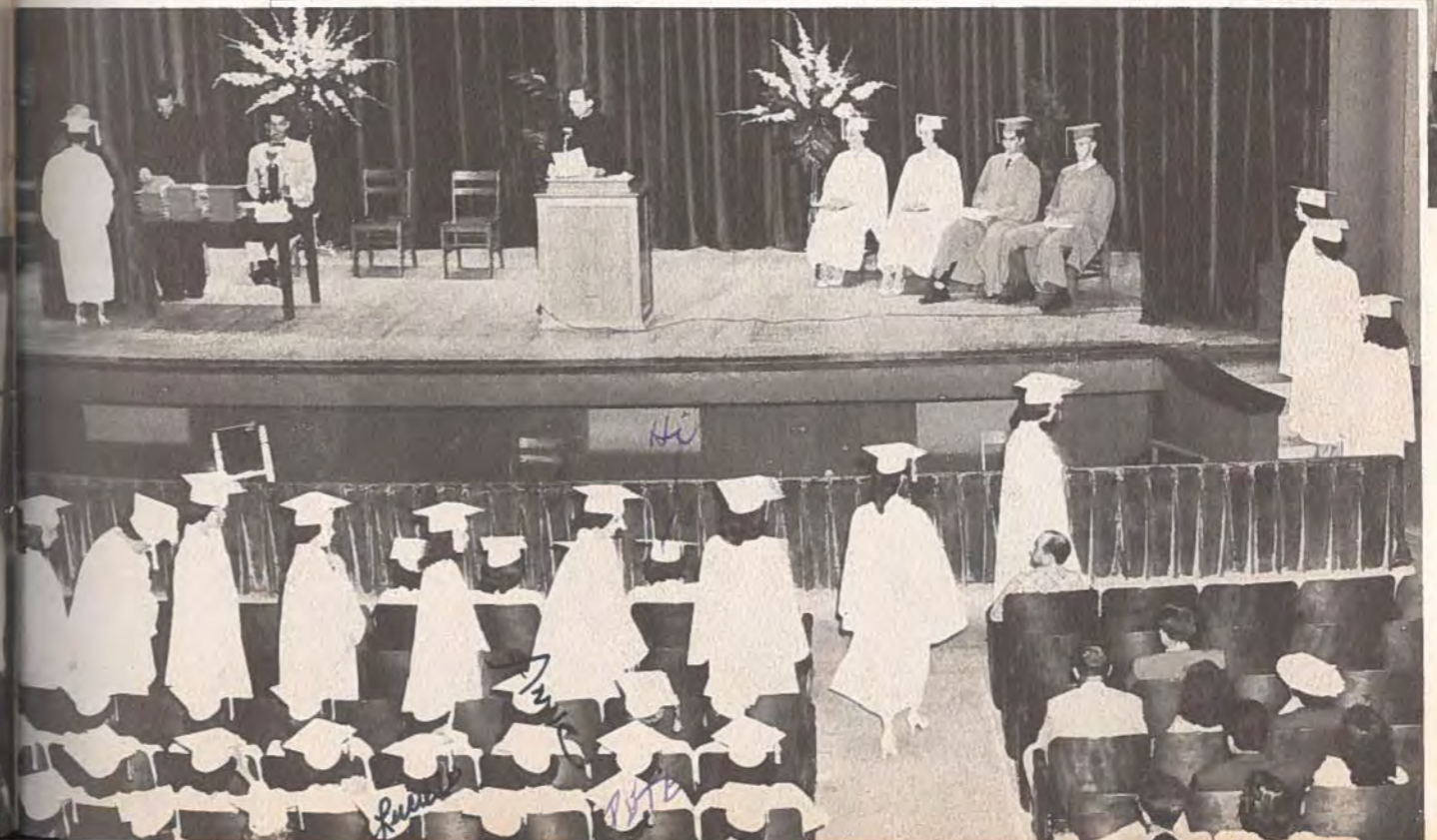


The combined Baccalaureate Service was held at the Corpus Christi Cathedral on Sunday evening, May 19, at 6:00 p.m. with the Rt. Rev. Msgr. Albert Schmitt as celebrant of the Mass. Father Adrian McKenna delivered the sermon.



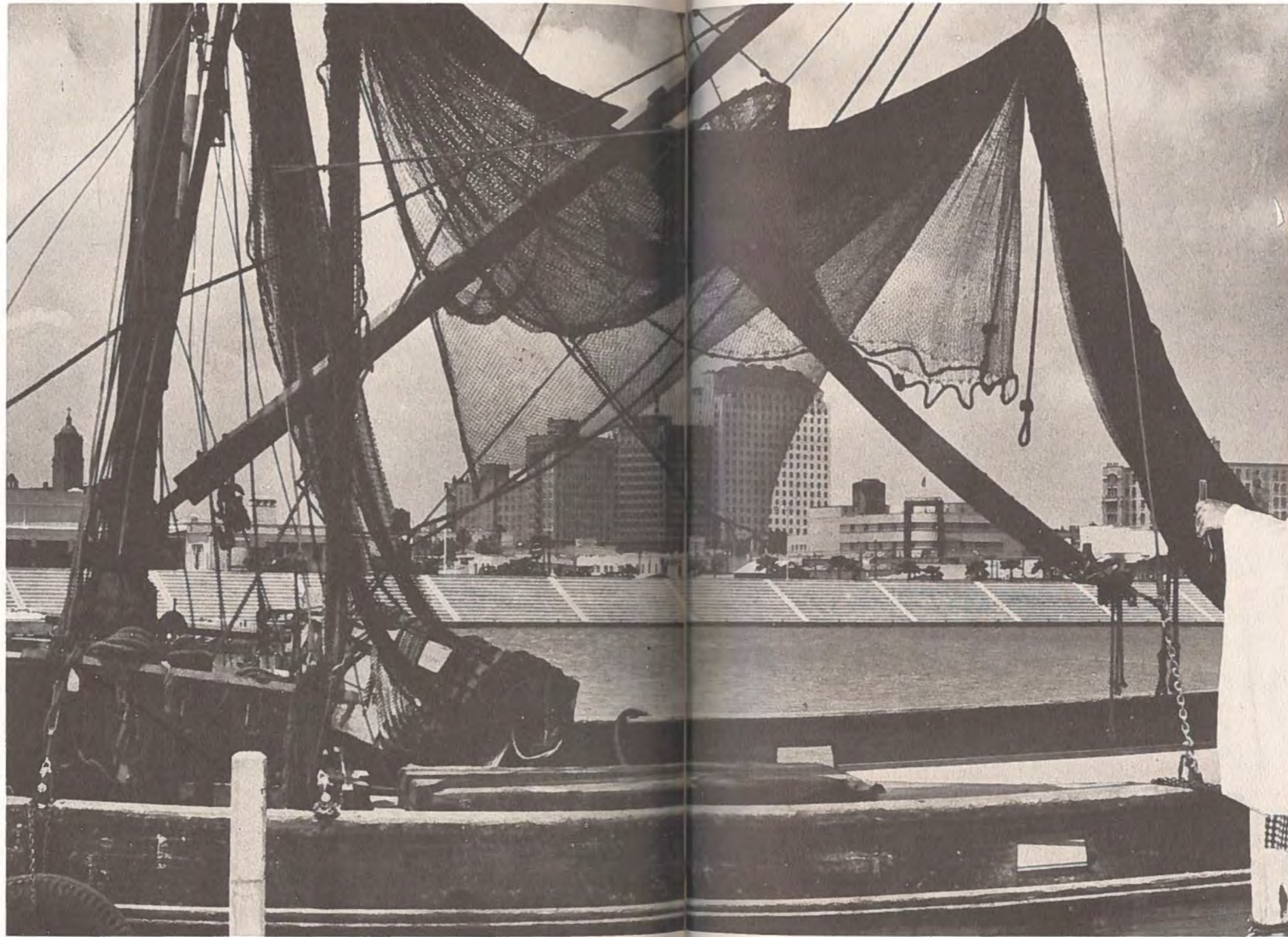
MERRIMENT . . . MEMORIES . . .

The climax of twelve years of work and study came the night of May 23, 1957, at 8:00 p.m. when the joint Commencement Exercises of I.W.A. and Corpus Christi Academy were held in the Del Mar College Auditorium. Awards and diplomas were presented to the class of '57 by his Excellency, the Most Rev. M. S. Garriga, D.D., L.L.D., Bishop of Corpus Christi.



ADVERTISEMENTS

ON THESE PAGES are represented the greatest people in the world, "our advertisers." We wish to extend our heartfelt appreciation to them for making our yearbook possible. Patronize them and encourage their business ventures. We wish them unequalled prosperity and may God bless them.



PORT PRINTING COMPANY

Offers

CONGRATULATIONS

and

BEST WISHES

to the

1957 GRADUATES

of

INCARNATE WORD ACADEMY

Compliments

JOHN L. TOMPKINS and CO.

*Remember Suzanne
There is a debt that
None goes his way
All that we send into
Comes back into our own
God bless you
Sister M. Stephens*

213 - 214 - 215

JONES BUILDING

Compliments

of

**S and Q
CLOTHIERS**

Nueces Hotel
Building



Dear Suzie, Now
 that I've gotten
 who far I don't know
 what to say well any-ol
 how best of luck alibays.
 It has been wonderful knowing
 you and going to school with
 you these past six years. Again
 I say - good luck.

Compliments

of ...

*Always,
Speedo*

MOORE'S

FOOD and PHARMACY

Compliments

of

WADE-GIBSON-MARTIN

ARCHITECTS

★

Corpus Christi, Texas

Compliments

of ...

FRIENDLY

FINANCE SERVICE

★

HELEN STEVENS HOOD

Manager

CONGRATULATIONS ...

TO THE SENIORS.

WILLIAM

DAVID

BONILLA

Compliments

of

**ARMSTRONG LUMBER
COMPANY**

FIRST IN QUALITY

FAIREST IN PRICE

FASTEST IN SERVICE

•

4501 LEOPARD STREET

Corpus Christi, Texas

DIAL TU 2-6514

COMPLIMENTS

OF

**McCRACKEN
ELECTRICAL SERVICE**

★

W. F. McCracken — TED J. REMLING

★

P. O. Box 1385

KINGSVILLE, TEXAS

AUTO REPAIR
and
PAINTING SERVICE

AUTOS
BOUGHT
and SOLD

ROBERTO LOZANO AUTO SALES

TU 4-8083

•
PRESTO DINERO SOBRE
AUTO Y SU FIRMA

ABONOS FACILES

•
2906 Baldwin Blvd. Corpus Christi, Texas

SALES and SERVICE NEW and USED

BONDED LOCKSMITH
FOR YOUR PROTECTION

CUTLER'S

BICYCLES — LAWNMOWERS

KEYS and SAFES

•
Phone TU 2-1751 Night Phone TE 5-7073
1235 S. Staples Corpus Christi, Texas

S and G SALES CO.

NEW and USED CARS

★

3822 Baldwin Blvd.
CORPUS CHRISTI, TEXAS

TOWN and COUNTRY HARDWARE

4218 S. Alameda Phone UL 2-7323

CORPUS CHRISTI, TEXAS

☆

HARDWARE — APPLIANCES
and GIFTS



Three Stores To Serve You
UPTOWN—701 Leopard
DOWNTOWN—401 N. Chaparral
PARKDALE PLAZA

PHONE TULip 3-8523

Frederick's...

FLOWERS and GIFTS

★

1667 South Staples
Corpus Christi, Texas

COMPLIMENTS OF . . .

CORPUS CHRISTI CHURCH GOODS COMPANY

"Your Catholic Supply Center"

136 Mesquite Street
CORPUS CHRISTI, TEXAS
Phone TU 2-6682

-- AL'S NEWS STAND --

415-A PEOPLES STREET

MAGAZINES

DRINKS

CORPUS CHRISTI
BRICK and LUMBER
COMPANY

121 North Staples



BRICK — PAINT and LUMBER OF ALL KINDS

Compliments

of . . .

CORPUS CHRISTI
THEATRES

CENTRE
408 N. Chaparral

RITZ
715 N. Chaparral

AMUSU
606 N. Mesquite

TOWER
1647 Alameda (Six Points)

GRANDE
1015 Leopard

MELBA
1016 Leopard

AYERS
Ayers Street

PORT
Port Avenue

GULF DRIVE INN
4044 South Port

OSAGE DRIVE INN
South Staples

COMPLIMENTS

OF

SAFETY GLASS

COMPANY

Compliments

of . . .

KINGSVILLE
PUBLISHING COMPANY
INCORPORATED



Publishers of
THE KINGSVILLE RECORD
KINGSVILLE, TEXAS



111-5 SOUTH FIFTH PHONE 2-4305

Compliments

of

DUNNE FUNERAL SERVICE

ESTABLISHED 1908

CORPUS CHRISTI,

TEXAS

COMPLIMENTS

OF . . .

MR. PHIL ROBINSON

Compliments

of . . .

NIXON

COFFEE SHOP

Wilson Building

•

24-HOUR SERVICE

•

GOVATOS BROTHERS

J. NICOLS

LUCKY STAR

School Supplies

•

**SOUTH TEXAS CANDY
COMPANY**

Compliments

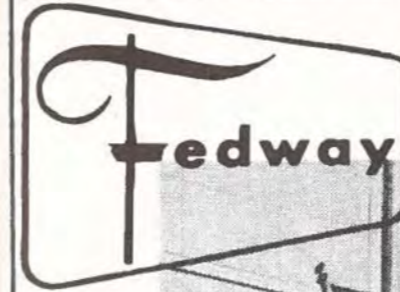
of . . .

**EL ROSARIO
FUNERAL HOME**

715 NORTH STAPLES STREET

Phone TU 4-7005

Phone TU 2-8325



Congratulations to the graduating class of 1957 . . . and best wishes for many happy years to follow!



HUFF'S FOOD STORE

"PLEASING YOU KEEPS US IN BUSINESS"

★

TUlip 2-0022

★

5333 Shell Road

CORPUS CHRISTI, TEXAS

Compliments

of . . .

**THE B. F. GOODRICH
COMPANY**

•

1221 Leopard Street

TU 4-8841

CORPUS CHRISTI, TEXAS

COMPLIMENTS

OF . . .

**JESS McNEEL
MACHINERY
CORPORATION**

●
CORPUS CHRISTI SAN ANTONIO
TEXAS

COMPLIMENTS

OF . . .

PARR DRUGS

★

WILSON BLDG. PHARMACY
ALAMEDA PHARMACY
SUBURBAN PHARMACY
PORTAIRS PHARMACY
SOUTH PARK PHARMACY

BEST WISHES

for a
Happy and
Prosperous Future
from

**CORPUS CHRISTI
STATE NATIONAL
BANK**

Member Federal Deposit
Insurance Corporation

★

501 NORTH CHAPARRAL STREET

**GOLDING'S
Six Points**
1716 South Alameda

**GOLDING'S
Shell Center**
617 Old Robstown Road

**GOLDING'S
Juvenile**
319 Schatzel

●

SHOES FOR TOTS AND TEENS
AND "INBETWEENS"

Best Wishes

to the

SENIORS

from

JAMES DE ANDA

ACME RADIO and TV

RCA — SYLVANIA
Sales and Service

★

M. PAUL WOLF, Owner

★

3305 Agnes Street Phone TU 3-2232

GONZALEZ

PETROLEUM COMPANY

WASHING — GREASING
GAS — OIL — KEROSENE

★

ALONZO M. GONZALEZ, Manager

★

501 North Staples Street
DIAL TU 2-0532
Corpus Christi, Texas

COMPLIMENTS

OF . . .

L. B. MIKULEC

Gulf Chevrolet Company

●

345 South Water St. Corpus Christi, Texas

PHONE: TU 4-5234

**JIMMY WOODS
MARKET**

1910 Ayers Street — 3126 So. Port Ave.

Market of . . .
**BOHEMIAN SAUSAGE
and COUNTRY CURED BACON**



— Catering To Those Home Freezers —



DANDY MEAT CUT and WRAPPED
THE WAY YOU LIKE

Also . . .

FRESH MEATS and POULTRY

*Dear Sybil,
Here's wishing a wonderful
year all the happiness and
success in the world. It's been
wonderful knowing you and I
hope you will never forget me.
Good luck and may God
watch over all your
undertakings.*
VILLAGE
*Love,
Mary Lane*

715 NINETEENTH STREET

1305 SOUTH STAPLES

**CORPUS AUTOMOTIVE
SUPPLY CORPORATION**

"Your N.A.P.A. Jobber Is a Good
Man to Know"

127 North Chaparral Street

TU 2-2581

**ESTRADA
MOTOR SALES**

2318 Agnes Street

PHONE: TU 4-9497

Compliments

of . . .

MAGNOLIA

FINANCE COMPANY

Compliments

of . . .

**CORPUS CHRISTI
PRODUCE COMPANY**

WHOLESALE

FRUITS and VEGETABLES

238 NORTH PORT

**H. T. BAILEY
CONSTRUCTION
COMPANY**

HOLLY ROAD



PAVING — EXCAVATION — CURBS

GUTTERS — ASPHALT MATERIALS



TE 5-5451

COMPLIMENTS

OF

**ALLIED PLUMBING
SUPPLY CO., Inc.**

2556 Agnes Street

CORPUS CHRISTI, TEXAS

Compliments

of . . .

PLEMON'S

FOODTOWN

COMPLIMENTS

OF . . .

NEFF'S

DRIVE INN STORE

4401 South Alameda

PHONE UL 2-9171

CONGRATULATIONS

GRADUATES

NUECES OFFICE

EQUIPMENT

COMPANY

SUCCESS

and

BEST WISHES

Mr. and Mrs. E. J. Karam

and Family

HOLLIS NEESE

AUTO PARTS

ALL ORDERS GIVEN

PROMPT ATTENTION

TU 3-8595

TU 3-8596

601 Old Robstown Road - Corpus Christi

Congratulations

to the

GRADUATES OF 1957

PHIL

MASSAD

In America's finest homes, schools,
colleges, libraries . . . wherever the
Nation's best informed men and
women make the choice, you find . . .

ENCYCLOPEDIA AMERICANA

★

THE BEST HOME REFERENCE

LIBRARY

★

J. T. DAVIS

UL 2-4280

SEITTER'S
Camera Center

AnSCO	Heiland
Argus	Keystone
Bausch & Lomb	Leica
Bell & Howell	Linhof
Contax (Carl Zeiss)	Minox
Du Pont	Polaroid
Eastman Kodak	Rollei
Elget Lenses	Sylvania
Graflex	Voightlander
General Electric	Weston
Hasselblad	Zeiss (Carl)

PHOTO FINISHING — SUPPLIES

— DRIVE-IN PARKING —

TU 3-4771

824 South Staples

Your Friends
for
"STRICTLY MUSIC"

★

The
HORN SHOP

SANDBLOM
INSURANCE AGENCY

1821 Ayers TU 4-5291

Compliments
of . . .



424 N. Chaparral TU 2-9413

BEST WISHES

from

K C C T
Radio Station

Featuring . . .

THE BEST IN SPANISH MUSIC,
NEWS and SPORTS

CONGRATULATIONS

and

BEST WISHES

LAYTON

OPTICAL COMPANY

CARTER ELECTRIC

COMPANY

ELECTRICAL CONTRACTING

FIXTURES and SUPPLIES

L.V.I. 7-29-57
+

*Dearest dear,
Here we sit . . . what fun!
These moments will be long
remembered. Some day, no
doubt, we will spend similar
ones again.*

*Just remember that I'll
always be there. Stay cheer- OF . . .
ful - stay good. God love you!*

*My love as ever,
Sister Mary Lucy, F.N.S.*
A FRIEND

America's
FASTEST
GROWING
Brand of Beer!

2084%
 SALES
 INCREASE*

* Research Company
 of America Report
 dated July 1, 1955



MOORE BROTHERS BEVERAGE COMPANY, Inc.

Compliments

of . . .

SCHAFFERS

MODERN PHARMACY

1002 Santa Fe TU 4-6641

"YOUR
 NEIGHBORHOOD
 DRUGGIST"

Compliments to

THE SENIOR CLASS OF 1957

. . . with BEST WISHES

JOE SIMON

Nueces Furniture Co.

317 N. Chaparral 1807 Ayers

PERSONALIZED INSURANCE
 SERVICE



HARRY P. STUTH
HARRY P. STUTH, JR.
A. GORDON HURST

CONGRATULATIONS

to the

SENIORS

from

TERMINIX

Business Phone: TU 4-7702

Residence Phone: TE 5-6621

MATHIEU ELECTRIC COMPANY

— ELECTRICAL CONSTRUCTION —

C. M. MATHIEU

423 South Alameda

Corpus Christi, Texas

**CHILDER'S
WHOLESALE
COMPANY**

NIFTY SCHOOL SUPPLIES

★

CANDY — CIGARS — CIGARETTES

CHEWING GUM — MATCHES

DOYLE'S

"Dated Drugs"

PRESCRIPTION PHARMACIES

★

700 Ayers at Santa Fe

TU 4-6337

Corpus Christi, Texas

Compliments

of . . .

BROONER STUDIO

1328 Third Street Corpus Christi, Texas

PORTRAIT and COMMERCIAL

PHOTOGRAPHY

**SWARD OPTICAL
COMPANY**

OPTICIANS

202 Commerce Building

CORPUS CHRISTI, TEXAS

Don't say "I can't say" see you "I stand" This is like writing on a postcard. What can you say? Try to remember all the words while things you have learned and hang on to them. Be convinced that what you want is worth the price. Keep your heart as high as your chin. This reminds me to keep your chin up. Good love you S.M. Sward

Compliments of . . .

**RAGLAND'S
OF Kingsville**

Featuring The FINEST . . .
IN APPAREL FOR THE ENTIRE FAMILY

Compliments

MR AND MRS. A. R. GOMEZ, SR.

**GOMEZ
PHARMACY**

TU 2-7723

2211

AGNES STREET



CONGRATULATIONS
to the
GRADUATES!

JERRY MIGL'S MARKET



SIX POINTS BOWLING CENTER

1713 Tenth Street—at Six Points

16 "NEW" AMF AUTOMATIC PINSPOTTERS

TU 2-4461

COMPLIMENTS

OF

Dr. and Mrs. Leonard J.

Svajda



Swantner and Gordon

INSURANCE COUNSELORS



HABEEB'S

TOWN 'N' COUNTRY JEWELERS
4236 So. Alameda Corpus Christi, Texas



PRESCOTT PHARMACY

4406 Prescott

UL 2-1461



**THERE ARE 11 H.E.B. FOOD STORES IN CORPUS CHRISTI
CONVENIENTLY LOCATED TO SERVE YOU:**

KOSTORYZ & GOLLIHAR RD.
HWY. 9 & VILLA DR.
2300 LEOPARD
822 LEOPARD
1403 THIRD

AGNES & 19th STREET
3133 S. ALAMEDA
2818 N. WATER
3102 BALDWIN
3001 AYERS

PARKDALE PLAZA

Anytime, I'm not going to philosophy, paper, or try to be funny. You know I have enjoyed it all - good & bad - and will remember you always. I doubt that our paths will cross much in the future and that's what memories are for. He has blessed you with a vocation

and I'm sure you will make the most of it. I only hope you will remember how the "little white" feel when you get some power over them. Kindness comes before charity ever. Remember me once in a while and when you get a program for me. May you always have the best. Love, Ed



☆ For two generations . . . modern, up-to-the-minute food stores

- 3006 S. ALAMEDA
- 4106 AYERS
- 3920 LEXINGTON
- BEEVILLE



FAMOUS BRAND FOODS SINCE 1920

BEST WISHES

ED HOFFMAN

Your Plymouth Dealer

THE CAR FOR THE YOUNG IN HEART

800 North Water

Phone TU 3-8585



NIXON BLUE PRINT

Lobby of Wilson Tower
Phone TU 2-2551



Mireur Leather Goods

Best in Leather Goods Since 1903
409 Mesquite Street



TOWER JEWELERS

1651 South Alameda

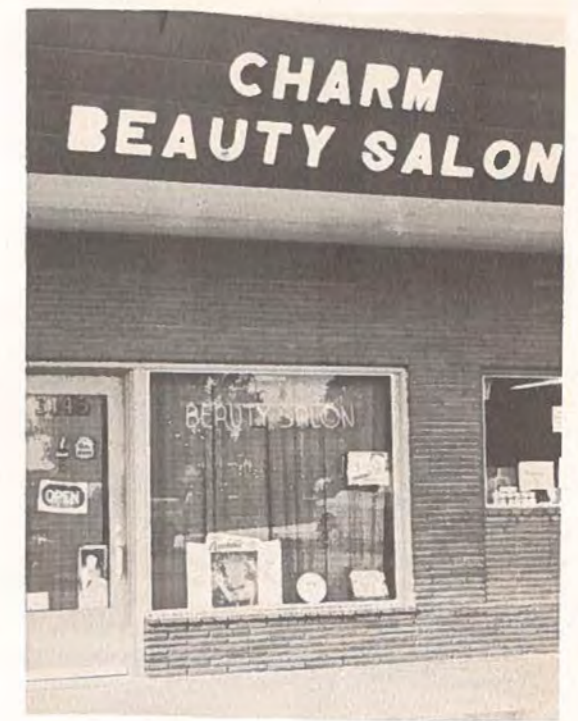
Phone TU 3-5901



Super-Serve Drive-In

1822 Ayers

TU 4-5759



3145 GOLLIHAR

UL 2-2655



**CORPUS CHRISTI
Bank and Trust**



SEITTER Photo Service

824 So. Staples

Dial TU 3-4771



COLORMART

4039 Ayers

UL 2-6566



A HAMMOND ORGAN FROM

BLED SOE MUSIC CO.



J. A. C. BAKER REALTY CO.
 REAL ESTATE BROKERS - APPRAISERS
 PROPERTY MANAGEMENT - GENERAL INSURANCE
 FOR OVER A QUARTER OF A CENTURY

J. A. C. BAKER 403 N. SHORELINE DRIVE
 CORPUS CHRISTI, TEXAS



SALEM'S JEWELRY



Currie Seed Company

907-17 South Staples Phone TU 4-9335



Helen Janik Beauty Salon

1943 Sixteenth Street Corner at Staples

Dial TU 2-5771

COMPLIMENTS

OF

ALDRIDGE TV



PIONEERS OF TELEVISION

IN CORPUS CHRISTI

Compliments

of

ARMANDO D. FLORES

.. Insurance Agency



Compliments

of . . .

**HOUSTON NATURAL GAS
 SYSTEM**



4225 SOUTH PORT AVENUE

CONGRATULATIONS

to the

SENIORS

from the

AURORA STAFF

Dear Suzie, I hope you are as happy as I am. I am so proud of you and your family. I love you all and hope you will be as successful as I have been. I love you all and hope you will be as successful as I have been. I love you all and hope you will be as successful as I have been.

Dear Suzie, I hope you are as happy as I am. I am so proud of you and your family. I love you all and hope you will be as successful as I have been. I love you all and hope you will be as successful as I have been. I love you all and hope you will be as successful as I have been.



**GUARANTY TITLE &
TRUST COMPANY**

915 N. Chaparral

Phone TU 2-1701



GREEN CREDIT JEWELERS

301 N. Chaparral
Phone TU 3-2193

1014 Leopard
Phone TU 3-8021

CORPUS CHRISTI, TEXAS



AMERICAN BOTTLING COMPANY

