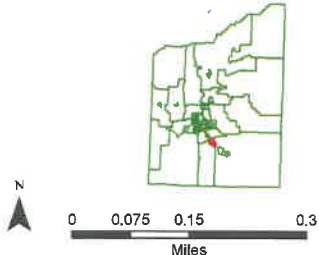


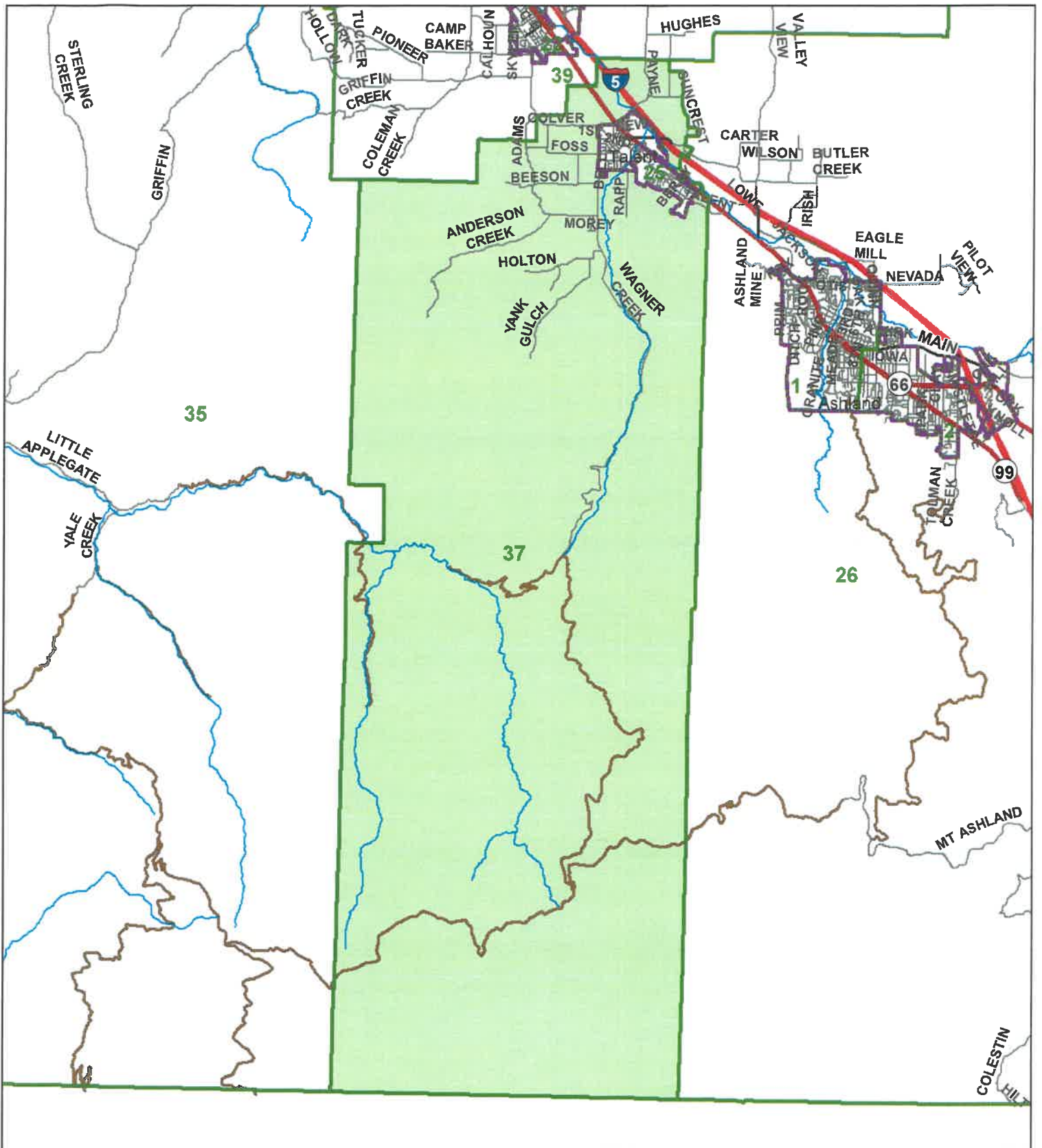
25 - Talent Precinct

PTS Zone 1

- | | | | |
|-----------------------|------------------------|------------------|---------------|
| City Limits - Outline | Streets by Type | Arterial | Major Streams |
| Precinct Area | Freeway | Collector; Other | Named Streams |
| All Precinct Outline | On/Off Ramp | Local Access | Minor Streams |
| | State Highway | Private | |



This map is based on a digital database compiled by Jackson County from a variety of sources. Jackson County cannot accept responsibility for errors, omissions, or positional accuracy. There are no warranties, expressed or implied.



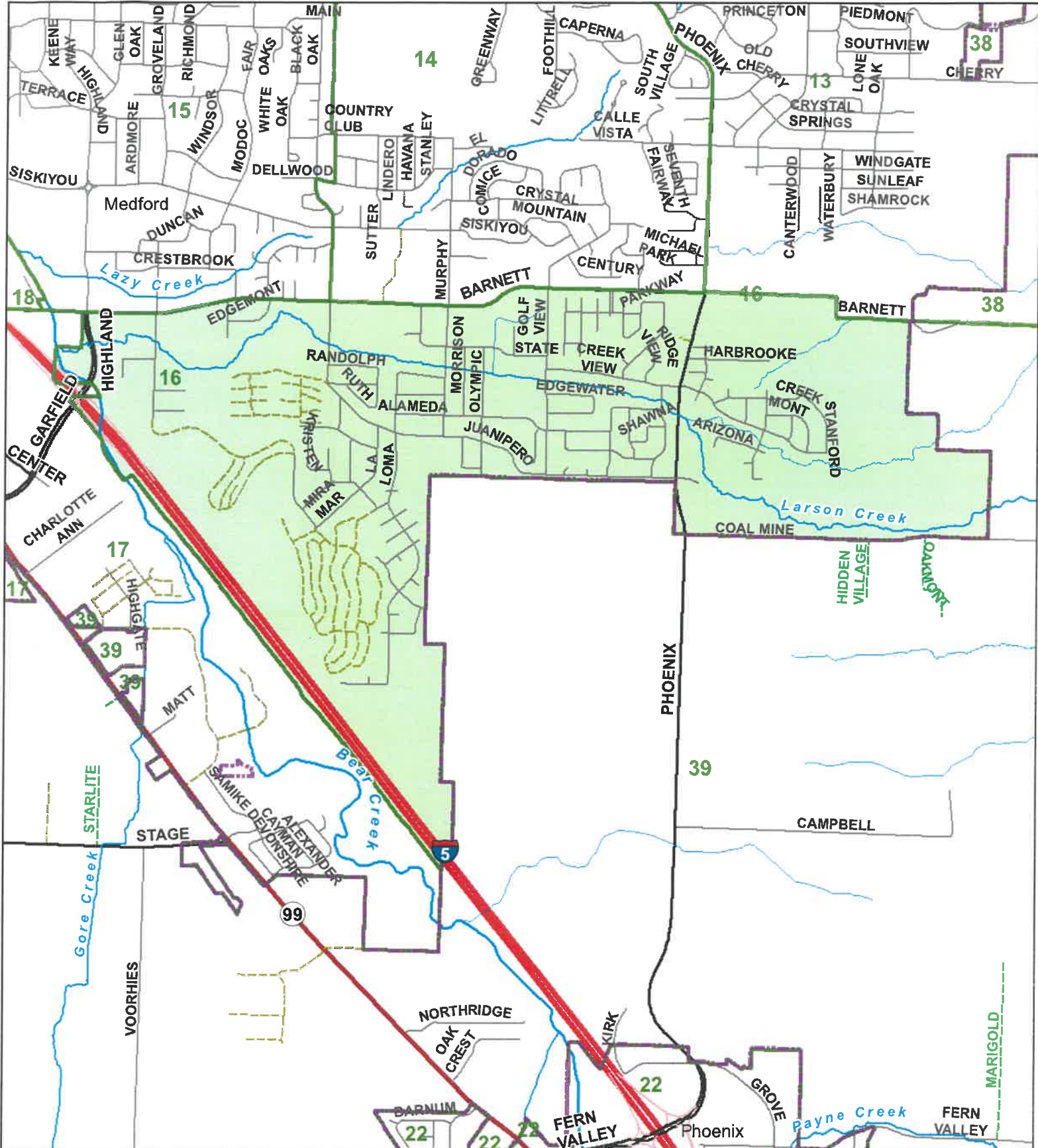
37 - Talent Rural Precinct PTS Zone 1

- | | | | |
|-----------------------|------------------------|------------------|--------------------------|
| City Limits - Outline | Streets by Type | State Highway | Rivers and Major Streams |
| Precinct Area | LOCALTYPE | Arterial | |
| All Precinct Outline | Freeway | Collector, Other | |
| | On/Off Ramp | Major BLM/USFS | |



JACKSON COUNTY
GIS

This map is based on a digital database compiled by Jackson County from a variety of sources. Jackson County cannot accept responsibility for errors, omissions, or positional accuracy. There are no warranties, expressed or implied.



16 - Medford Precinct

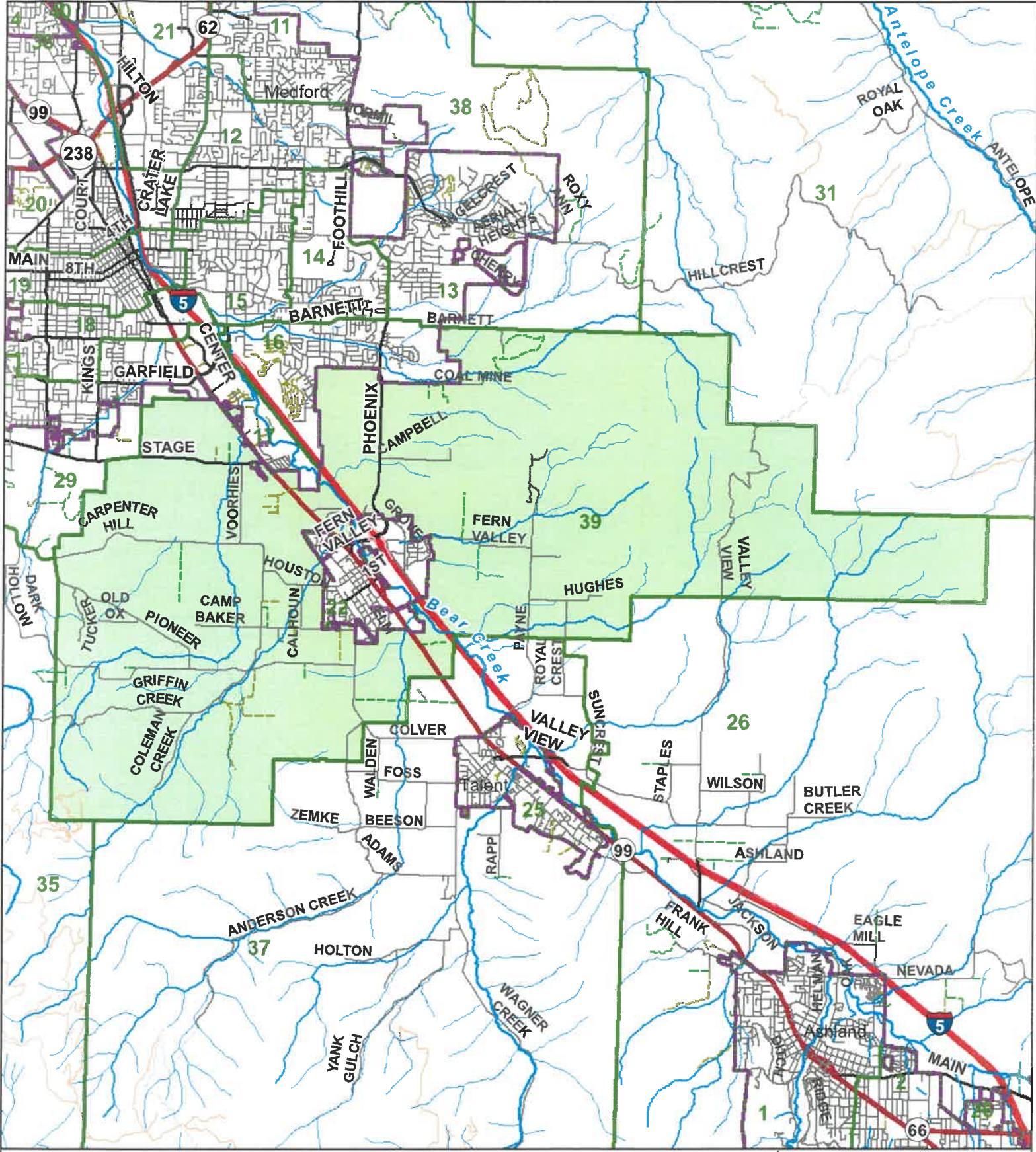
PTS Zone 2

- | | | | |
|-----------------------|------------------------|------------------|---------------|
| City Limits - Outline | Streets by Type | Arterial | Major Streams |
| Precinct Area | Freeway | Collector; Other | Named Streams |
| All Precinct Outline | On/Off Ramp | Local Access | Minor Streams |
| | State Highway | Private | |



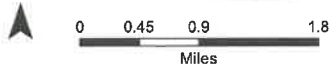
JACKSON COUNTY
GIS

This map is based on a digital database compiled by Jackson County from a variety of sources. Jackson County cannot accept responsibility for errors, omissions, or positional accuracy. There are no warranties, expressed or implied.



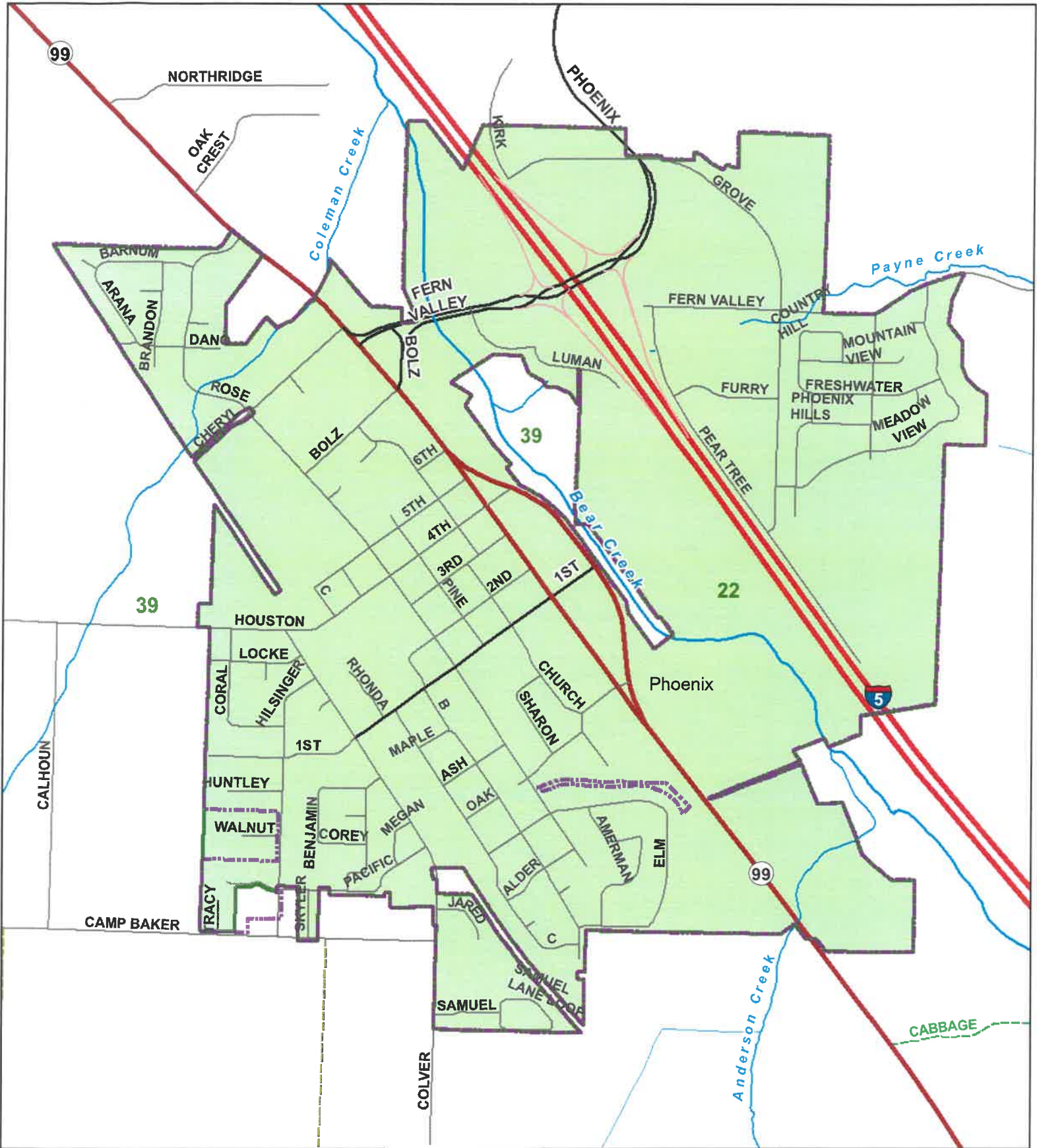
39 - Phoenix Rural Precinct PTS Zone 2

- | | | | |
|-----------------------|------------------------|------------------------|---------------|
| City Limits - Outline | Streets by Type | Collector; Other | Major Streams |
| Precinct Area | Freeway | Unimproved County Road | Named Streams |
| All Precinct Outline | On/Off Ramp | Local Access | Minor Streams |
| | State Highway | Other BLM/USFS | |
| | Arterial | Private | |



JACKSON COUNTY
GIS

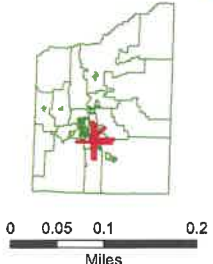
This map is based on a digital database compiled by Jackson County from a variety of sources. Jackson County cannot accept responsibility for errors, omissions, or positional accuracy. There are no warranties, expressed or implied.



22 - Phoenix Precinct

PTS Zone 2

- | | | | |
|-----------------------|------------------------|------------------|---------------|
| City Limits - Outline | Streets by Type | Arterial | Major Streams |
| Precinct Area | Freeway | Collector; Other | Named Streams |
| All Precinct Outline | On/Off Ramp | Local Access | Minor Streams |
| | State Highway | Private | |



JACKSON COUNTY
GIS

This map is based on a digital database compiled by Jackson County from a variety of sources. Jackson County cannot accept responsibility for errors, omissions, or positional accuracy. There are no warranties, expressed or implied.