

Project No. 2023_079

MIDLOTHIAN ISD FRANK SEALE MIDDLE SCHOOL
INDOOR GOLF FACILITY

December 20, 2023

GENERAL

The following changes, additions or deletions for the above project shall be made to the contract documents; all other conditions shall remain the same. Note: the additions, deletions or changes listed in this Addendum may affect more than the specific instance(s) mentioned. Coordination may be necessary to fully revise cases of duplicates information. The addendum supersedes current conditions shown. Acknowledgements receipt of this addendum. This addendum forms a part of the contract documents and modifies them as follows.

NOTICE

Addendum No. 1 will be issued December 20, 2023 and will include additional bidder questions.

1. At the pre-bid site walk there was mention of removing the overhead wire/cables that span the existing space, are these to be removed?

The overhead wire/aircraft cables will be removed and infill holes with CMU block crack/hole filler to match surface.

2. Will the wall padding called out at detail 2 on A-101 be existing wall padding reinstalled or will this be new wall padding, please advise?

New wall padding will be installed to match the school color blue. Contact architect/owner for correct colors.

3. Trackman – Indoor only, indoor/outdoor was in specifications – address in addendum?

Indoor only Trackman 4 will be in the drawings.

4. Someone mentioned something about special lighting for the Trackman, but in conversation with you guys-you stated it was part of the system package.

222 w las colinas blvd
suite 749e
irving tx 75039
214 396 2090 t

Trackman 4 (indoor only) will provide lighting for tee strike location.

5. What are the Sherwin Williams color codes for PT1, PT2 and PT3 on the finish schedule?

Colors for PT1, PT2, and PT3 are to match existing wall colors and door and frame colors.

6. What color is being requested for the padding that will go on the walls?

New wall padding will be installed to match the school color blue.
Contact architect/owner for correct colors.

7. Note 3 on T-200 shows to update an existing P/A speaker to match the existing school. There are no specifications or details on what type of speaker this is. Please advise.

A specification for the P/A speaker has been provided on sheet T-201 Technology Sheet Specifications.

DRAWINGS

G-001 – TITLE SHEET – REISSUED SHEET

1. Clouded Architectural, Mechanical, Electrical, and Technology revised sheets.

A-101 – FLOOR PLAN AND DEMOLITION FLOOR PLAN – REISSUED SHEET

1. Added note to use trackman 4 indoor only technology on floor plan.
2. Added note to use SYNLawn putt holes or approved equal.
3. Updated detail 3/S-00 Wall Partition to use Plywood.
4. Added note to demolition floor plan to remove aircraft cable above floor and patch holes in CMU block with block filler cement.
5. Added note flat screen TV by owner.

A-202 – INTERIOR ELEVATIONS – REISSUED SHEET

1. Added note to east interior elevation for existing fence padding and fence to remain. Also, added a note to use school color blue for ladder padding.
2. Added note to north interior elevation to paint entire column PT1 which is to match wall paint.

3. Added note to use the school color blue for column padding and to use plywood column wrap.
4. Added note to use the school color blue for wall padding.
5. Added note to CMU wall to use block filler cement on all holes and cracks.

M-101 – MECHANICAL FLOOR PLAN – REISSUED SHEET

1. Seals added.
2. Revised mechanical HVLS fan specification.
3. Added Electrical Provisions specification.
4. Revised keyed note 1.
5. Updated Fan schedule.
6. Added switch locations to plans.

E-101 – ELECTRICAL FLOOR PLAN – REISSUED SHEET

1. Seals added.
2. Revised Symbol Schedule.
3. Added note to state all lighting is existing to remain.

E-102 – ELECTRICAL SHEET SPECIFICATION – REISSUED SHEET

1. Seals added.
2. Revised Specification Section 260533 Parts 2 & 3.

T-200 – TECHNOLOGY FLOOR PLAN – REISSUED SHEET

1. Seals added.
2. Added Intercom legend.
3. Revised responsibility matrix.
4. Revised technology keyed notes #3.
5. Added existing wall mounted cabinet approximate location.

T-201 – TECHNOLOGY SHEET SPEC – REISSUED SHEET

1. Seals added.
2. Revised Intercom System Specifications.

ATTACHMENTS

G-001, Title Sheet, Dated 12-20-2023

A-101, Floor Plan and Demolition Floor Plan, Dated 12-20-2023

A-102, Interior Elevations, Dated 12-20-2023

M-101, Mechanical Floor Plan, Dated 12-20-2023

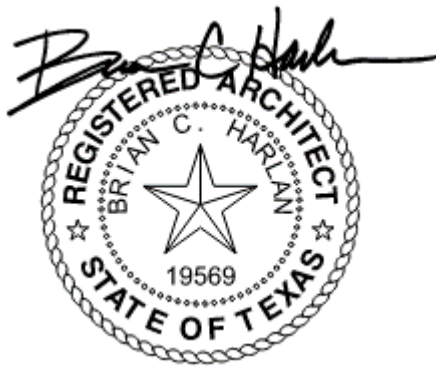
E-101, Electrical Floor Plan, Dated 12-20-2023

E-102, Electrical Floor Plan, Dated 12-20-2023

T-200, Technology Floor Plan, Dated 12-20-2023

T-201, Technology Sheet Spec, Dated 12-2023

12/7/2023 Pre-Bid Sign in Sheet

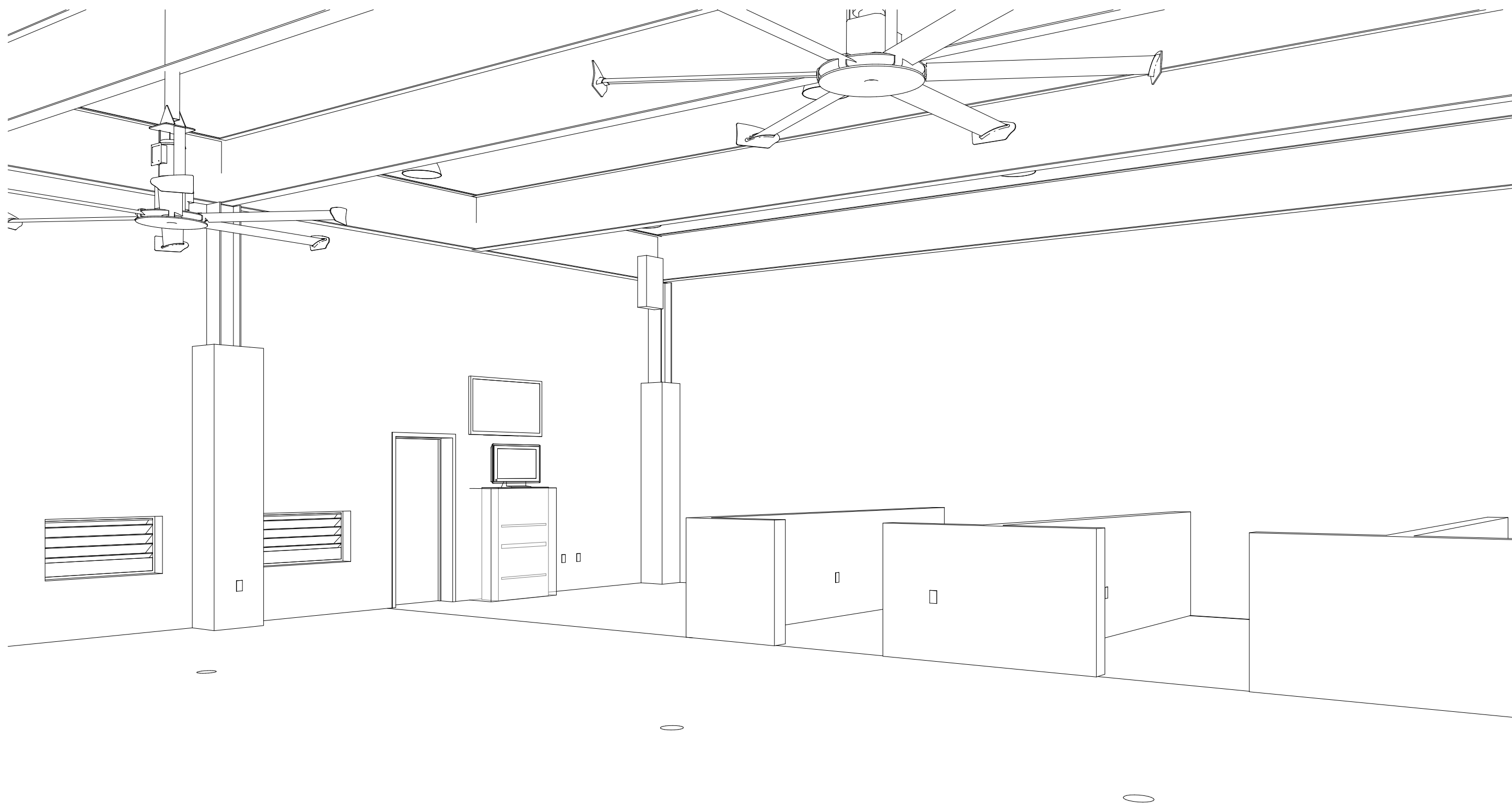


2929 n central ave
eleventh floor
phoenix az 85012

602 257 1764 t
602 257 9029 f

www.owp.com

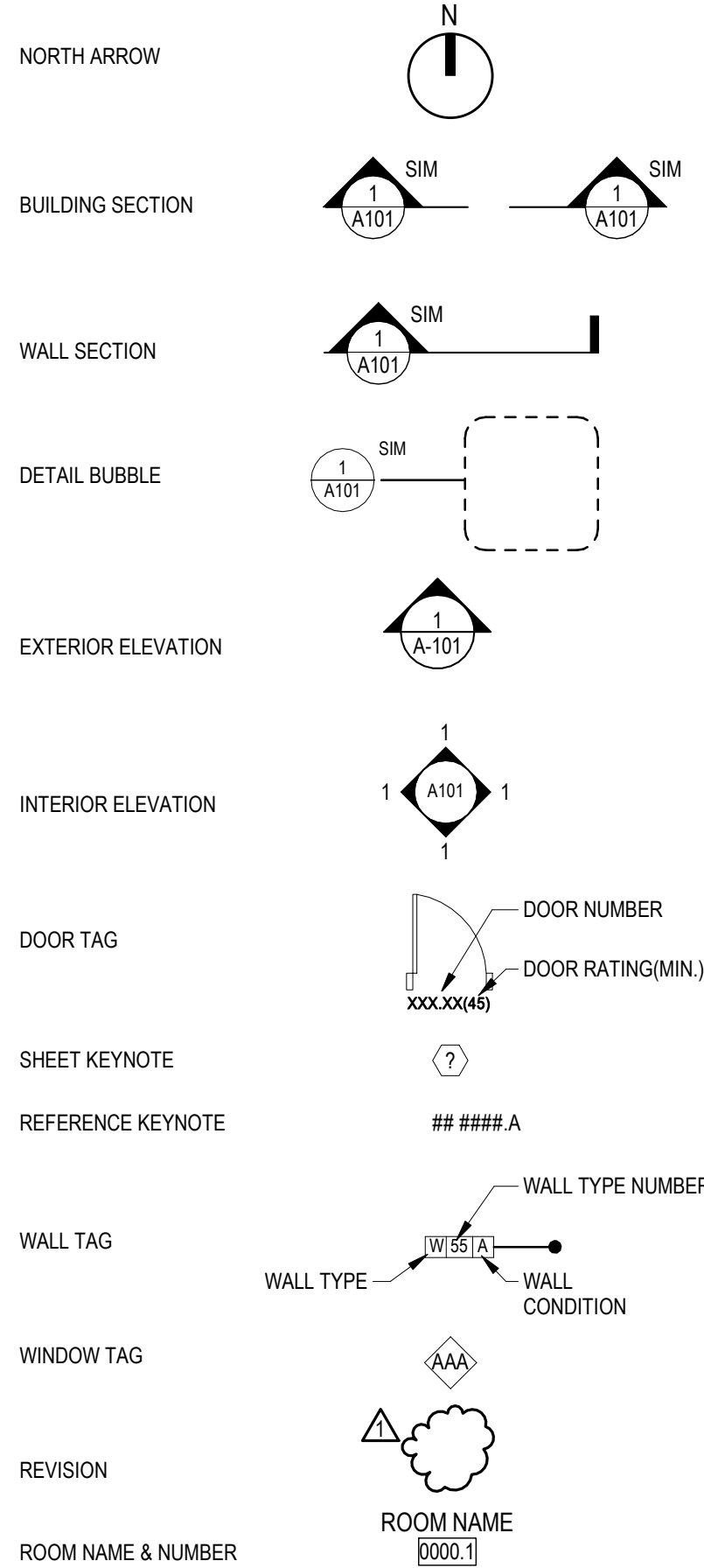
FRANK SEALE MIDDLE SCHOOL
INDOOR GOLF FACILITY



ABBREVIATIONS LIST

AS DESCRIBED THE US NATIONAL CAD STANDARDS MODULE 4 TERMS AND ABBREVIATIONS, INCLUDING THE FOLLOWING:			
A/C	Air Conditioning/Conditioner	MAX	Maximum
AB	Anchor Bolt	MECH	Mechanical
ABC	Aggregate Base Course	MFR	Manufacturer
ACT	Acoustical Ceiling Tile	MO	Masonry Opening
AFF	Above Finish Floor	MIN	Minimum
ALT	Alternate	MISC	Miscellaneous
ALUM	Aluminum	MTL	Metal
BRG	Bearing	NIC	Not In Contract
BM	Beam	NTS	Not To Scale
BUR	Built up roof	OC	On Center
CI	Cast Iron	OD	Outside Diameter
CJ	Control Joint	OPP	Opposite
CL	Center Line	ORD	Overflow Roof Drain
CLG	Ceiling	PL	Property Line
CLR	Clear	PLAM	Plastic Laminate
CMU	Concrete Masonry Unit	PLMB	Plumbing
CO	Clean Out	PLYWD	Plywood
COL	Column	PWR	Power
CONC	Concrete	RD	Roof Drain
CONT	Continue	RO	Rough Opening
OPT	Carpet	S/S	Stainless Steel
OT	Ceramic Tile	SCHED	Schedule
DF	Drinking Fountain	SF	Square Foot
DIA	Diameter	SHT	Sheet
DS	Downspout	SIM	Similar
DWG	Drawing	SPEC	Specifications
ELEC	Electric	SQ	Square
EJ	Expansion Joint	SS	Sanitary Sewer
EL	Elevation	STD	Standard
EQ	Equal	STRUCT	Structural
EXIST	Existing	SUSP	Suspended
EXT	Exterior	T&G	Tongue and Groove
FD	Floor Drain	TEMP	Temporary
FDC	Fire Department Connection	TMPPD	Temporary
FEC	Fire Extinguisher Cabinet	TOB	Top of Beam
FIN FLR	Finished Floor	TOC	Top of Curb/Concrete
FIN GR	Finished Grade	TOJ	Top of Joint
FIN	Finish	TOM	Top of Masonry
FLR	Floor	TOS	Top of Steel
GA	Gage	TOW	Top of Wall
GAL	Galvanized	TYP	Typical
GLU LAM	Glue Laminated Wood	UGNG	Underground
GYP	Gypsum	UNO	Unless Noted Otherwise
GYP BD	Gypsum Board	VCT	Vinyl Composition Tile
HB	Hose Bibb	VERT	Vertical
HM	Hollow Metal	WC	Water Closet
HORIZ	Horizontal	WD	Wood
HVAC	Heating/Ventilating/Air Conditioning	WH	Water Heater
ID	Inside Diameter	WWF	Welded Wire Fabric
INFO	Information		
INT	Interior		
LAV	Lavatory		
LLH	Long Leg Horizontal		
LLG	Long Leg Vertical		
LVR	Louver		

TYPICAL SYMBOLS LEGEND



CONTACT INFORMATION

SALAS O'BRIEN - MEP
106 DECKER DR.
SUITE 200IRVING, TEXAS 75062
CONTACT: JUSTICE POPE
OFFICE PHONE: 972-812-1270
CELL PHONE: 972-349-0801
EMAIL: E.justice.pope@salasobrien.com

VACINITY MAP



PROJECT LOCATION
700 George Hopper Rd.
Midlothian, TX 75065

SHEET INDEX

GENERAL

SHEET #	DESCRIPTION	REV. DELTA #	REV. DATE
1	G-001 TITLE SHEET	1	12.20.2023

ARCHITECTURAL

SHEET #	DESCRIPTION	REV. DELTA #	REV. DATE
AS-101	ARCHITECTURAL SITE PLAN		
AS-102	ENLARGED SITE PLAN		
A-101	FLOOR PLAN AND DEMOLITION FLOOR PLAN	1	12.20.2023
A-102	REFLECTIVE CEILING PLAN AND FINISH FLOOR PLAN		
A-202	INTERIOR ELEVATIONS	1	12.20.2023
A-402	SPECIFICATIONS		

ELECTRICAL

SHEET #	DESCRIPTION	REV. DELTA #	REV. DATE
E-101	ELECTRICAL FLOOR PLAN	1	12.20.2023
E-102	ELECTRICAL SHEET SPECS	1	12.20.2023

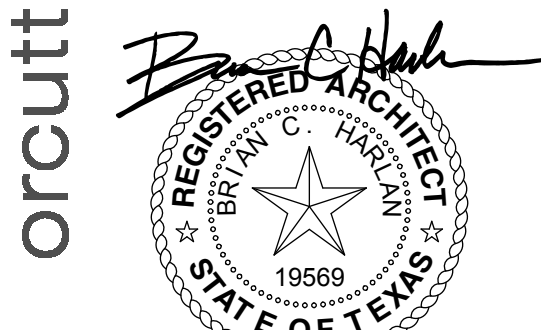
MECHANICAL

SHEET #	DESCRIPTION	REV. DELTA #	REV. DATE
M-101	MECHANICAL FLOOR PLAN	1	12.20.2023

TECHNOLOGY

SHEET #	DESCRIPTION	REV. DELTA #	REV. DATE
T-200	TECHNOLOGY FLOOR PLAN	1	12.20.2023
T-201	TECHNOLOGY SHEET SPECIFICATION		

2929 n central ave
eleventh floor
phoenix, az 85012
602.257.1764 t
www.owp.com



12-20-2023

© 2024 This hard copy or electronic drawing is an instrument of service and the property of Orcutt Winslow and shall remain the property. The design professional shall not be responsible for any alterations, modifications or additions made to the drawing by any party other than the design professional. Use of this drawing shall be limited to the project and for which it was prepared and permission is granted to the design professional to use the drawing in whole or in part in any other project without the design professional's written consent. Publication in any medium in whole or in part is prohibited without the written permission of the design professional. Any information obtained or conclusions derived from the drawing shall be at the user's sole risk.

FRANK SEALE MIDDLE SCHOOL
INDOOR GOLF FACILITY
700 GEORGE HOPPER RD, MIDLOTHIAN, TX 75065

CLIENT CONTACT
MIDLOTHIAN ISD
100 WALTER STEPHENSON RD.
Midlothian, TX 76065

648-856-5000 T Jose Martinez
jose.martinez@midlothianisd.org

OWP PROJECT NO. DATE OF ISSUE
2022-079 02.27.2024

REVISIONS	DATE
1	12.20.2023

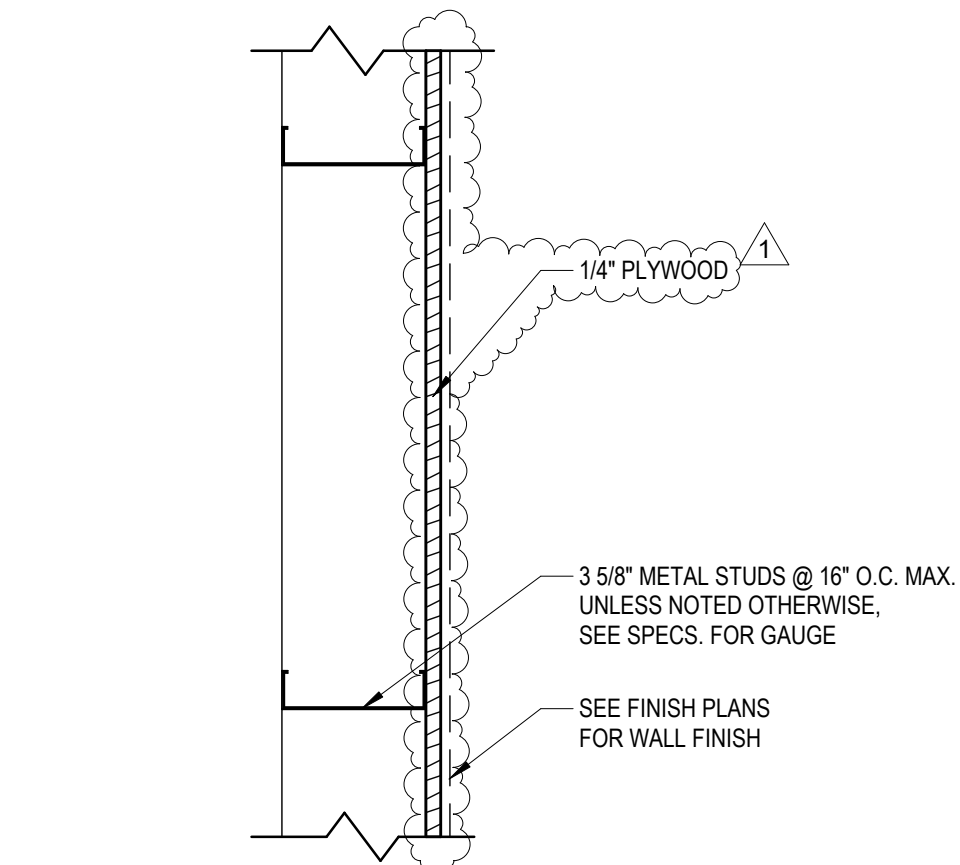
PROJECT TEAM DRAWN BY
Ed Studio EA

PROJECT PHASE
100% CD Package

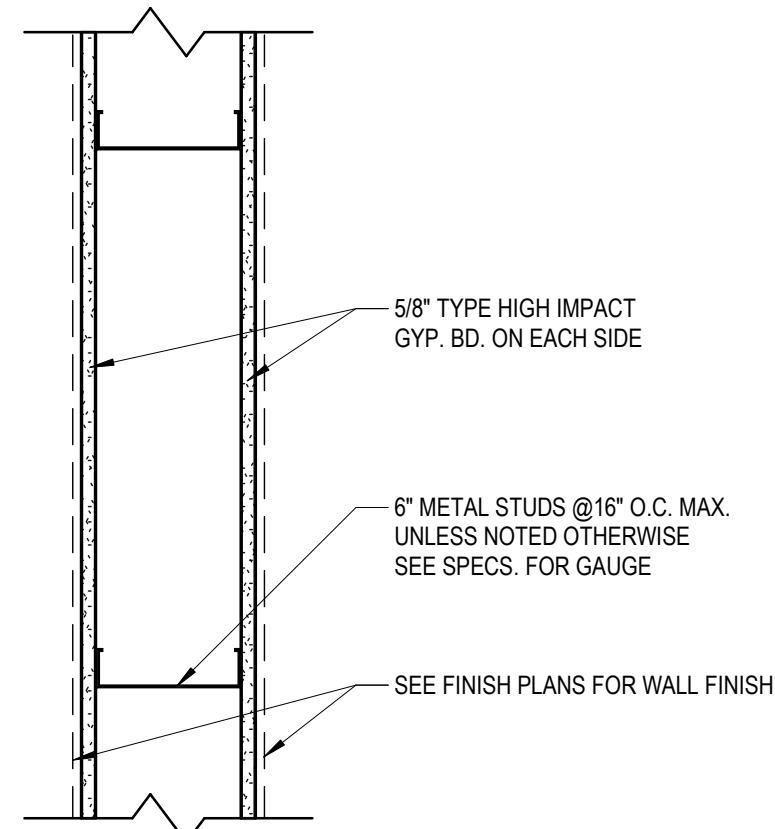
SHEET CONTENTS
TITLE SHEET

SHEET NO.
G-001
AGENCY NO.

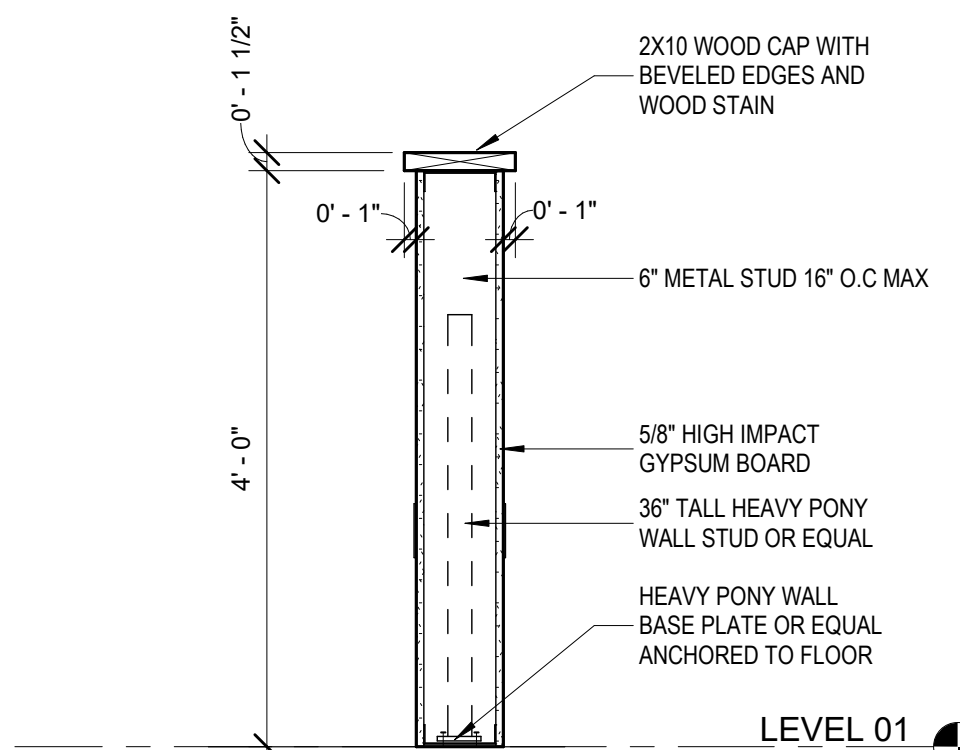
1/20/2023 10:28:44 AM orcutt | winslow / 2022-079 / INDOOR GOLF FACILITY - FRANK SEALE MIDDLE SCHOOL / SCHEMATIC DESIGN / A-101- FLOOR PLAN AND DEMOLITION FLOOR PLAN / EA
C:\Users\arva\Documents\2023_079_MidlothianIndoor_Golf_Facility_arva.ea.rvt



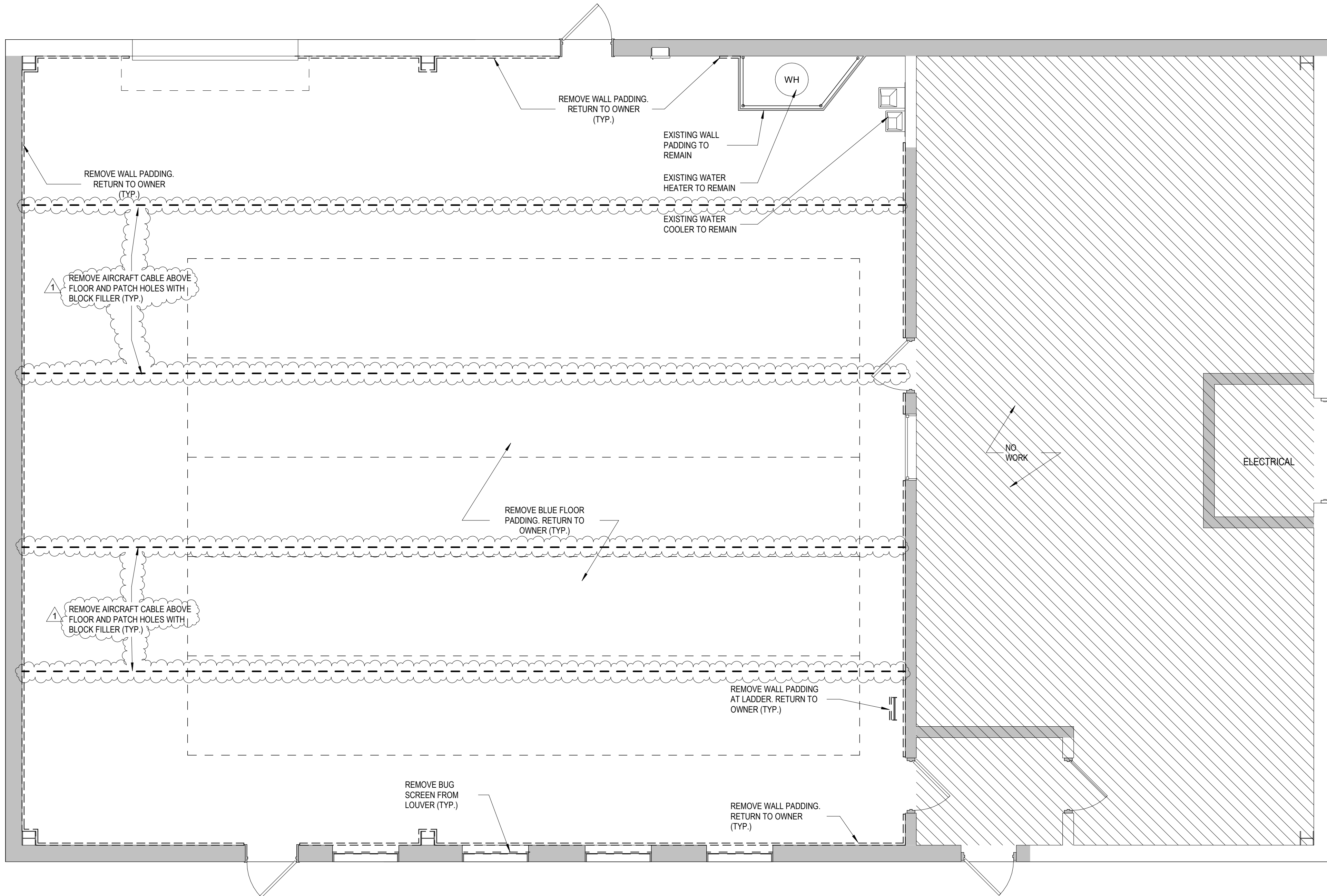
3 S-00 WALL PARTITION
1 1/2" = 1'-0"



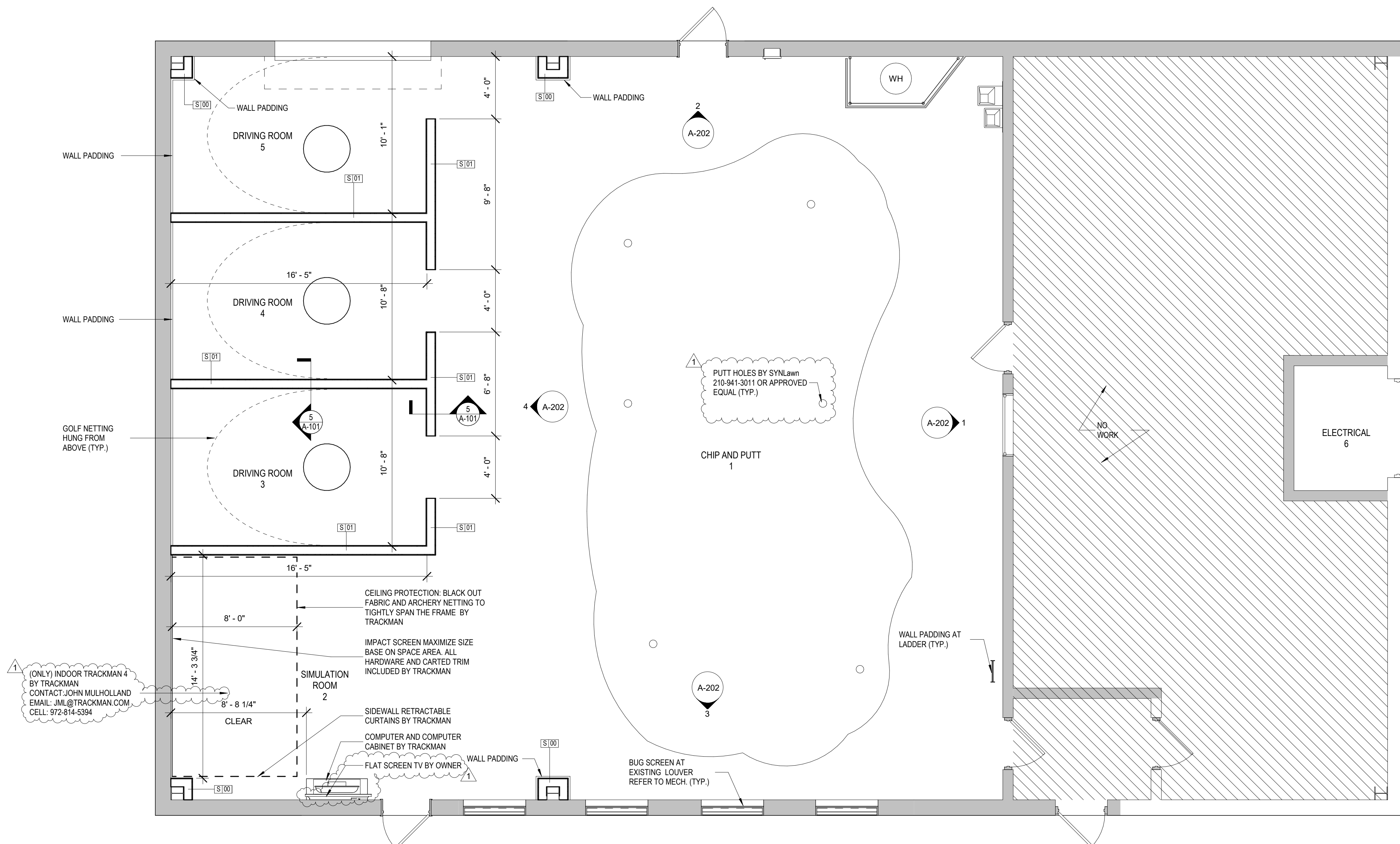
4 S-01 WALL PARTITION
1 1/2" = 1'-0"



5 WALL SECTION
3/4" = 1'-0" REF 2 / A-101



1 DEMOLITION FLOOR PLAN
1/4" = 1'-0" REF 5 / A-101



2 FLOOR PLAN
1/4" = 1'-0" REF 5 / A-101

GENERAL SHEET NOTES

- Keynotes and legends are typical for all floor plan sheets, and may not apply to each sheet.
- Dimensions are to face of masonry, metal studs and centerline of columns unless noted otherwise.
- See enlarged floor plans and details for specific locations.
- Field verify all dimensions prior to fabrication of any cabinetry, frames, structural items, etc.
- All guardrails and handrails shall be fabricated and installed in accordance with applicable codes, regulations, and AHJ.
- Verify and coordinate all requirements for owner furnished items, prior to performance of any work that is to accommodate and interface with such items.
- All angles are increments of 45 degrees unless noted otherwise.
- Provide "Fry" reveal FDM 625-75 or equal at all gypsum board to masonry or concrete transitions.
- All frame walls to be Type S-01 and all furring walls to be S-00 unless noted otherwise.

DEMOLITION NOTES

- Coordinate demolition with new construction. All demolition and repair necessary to accomplish new construction shall be included. Contractor shall remove all existing improvements whether or not specifically indicated on the drawings to facilitate the completion of all required work. Contractors shall visit the site and verify all quantities and items required to be removed.
- Where gypsum board is to remain, patch, tape and float portion of wall to match adjacent new finish.
- Contractor to coordinate demolition so all wiring, conduit, equipment, etc. to remain is not damaged. Certain items may be temporarily removed and replaced later during course of restoration. General Contractor will be required to incorporate this work into their schedule. The systems may include, but are not limited to the following: EMS/controls, electrical power and lighting, data, audiovisual, security, intercom, CATV, etc. Contractor to tag and loop wire to remain back to control panels, typical.
- Any plumbing to be demolished shall have piping terminated above finished ceiling, below finished floor, and behind finished walls. All drain/waste/vent piping to be capped and sealed at all openings per requirements of AHJ.
- Remove floor and wall covering typical throughout areas of demolition (UNO) and any other areas as affected by demolition/new construction. Parge, float and/or prepare floor and wall surfaces to receive new finishes.
- Contractor shall coordinate any shutdown required during demolition with Owner.
- Contractor to maintain or repair fire and smoke ratings of existing floor, roof and wall assemblies throughout.

WALL & PARTITION GENERAL NOTES

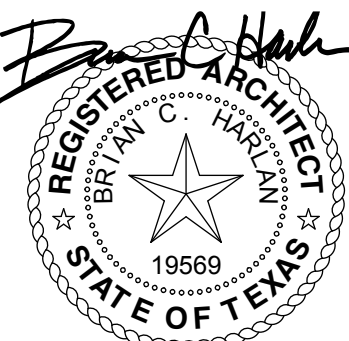
- All penetrations at smoke and fire rated assemblies shall be protected, sealed, and dampened, using only UL or ICC-ES approved methods, materials and installation, as required to maintain the assembly's rating and smoke resistance. All materials and installation details shall conform to the UL listings for "through penetration fire stop systems" where applicable. The Contractor shall submit shop drawing details, furnished by the manufacturer of the fire stop material, that show complete conformance to the UL Listing, and such drawings shall be available to the Fire or Building Inspectors on-site. The drawings shall be specific for each penetration type.
- All backing support for wall mounted items shall be 16 gauge min. metal strapping, UNO.
- Brace interior non-bearing walls to structure per Architectural Drawings.
- All light gauge metal framing shall be installed in strict accordance with ASTM 754 "Standard Specifications for Installation of Steel Framing Members".

FLOOR PLAN LEGEND

EXISTING WALLS

orcutt | winslow

2929 n central ave
eleventh floor
phoenix, az 85012
602.257.1764 t
www.owp.com



12-20-2023

© 2024 This hard copy or electronic drawing is an instrument of service and the property of orcutt | winslow and shall remain their property. The design professional shall not be responsible for any alterations, modifications or additions made to this drawing by any party other than the design professional. Use of this drawing shall be limited to the project and any other use without the design professional's written consent. Publication in any medium in whole or in part is prohibited without the written permission of the design professional. Any information obtained or conclusions derived from this drawing shall be at the user's sole risk.

FRANK SEALE MIDDLE SCHOOL
INDOOR GOLF FACILITY
700 GEORGE HOPPER RD, MIDLOTHIAN, TX 76065

CLIENT CONTACT
MIDLOTHIAN ISD
100 WALTER STEPHENSON RD.
Midlothian, TX 76065

648-856-5000 T Jose Martinez
jose.martinez@midlothianisd.org

OWP PROJECT NO. DATE OF ISSUE
2022-079 02.27.2024

REVISIONS	DATE
1 ADDENDUM	12.20.2023

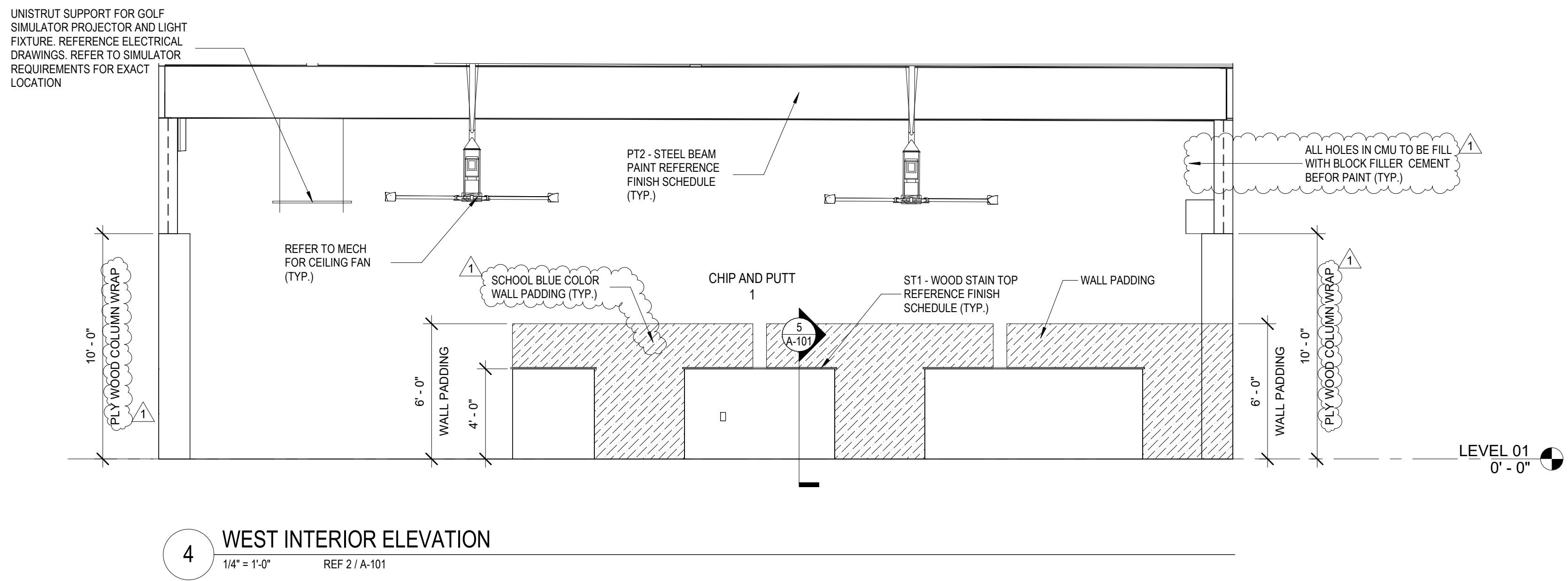
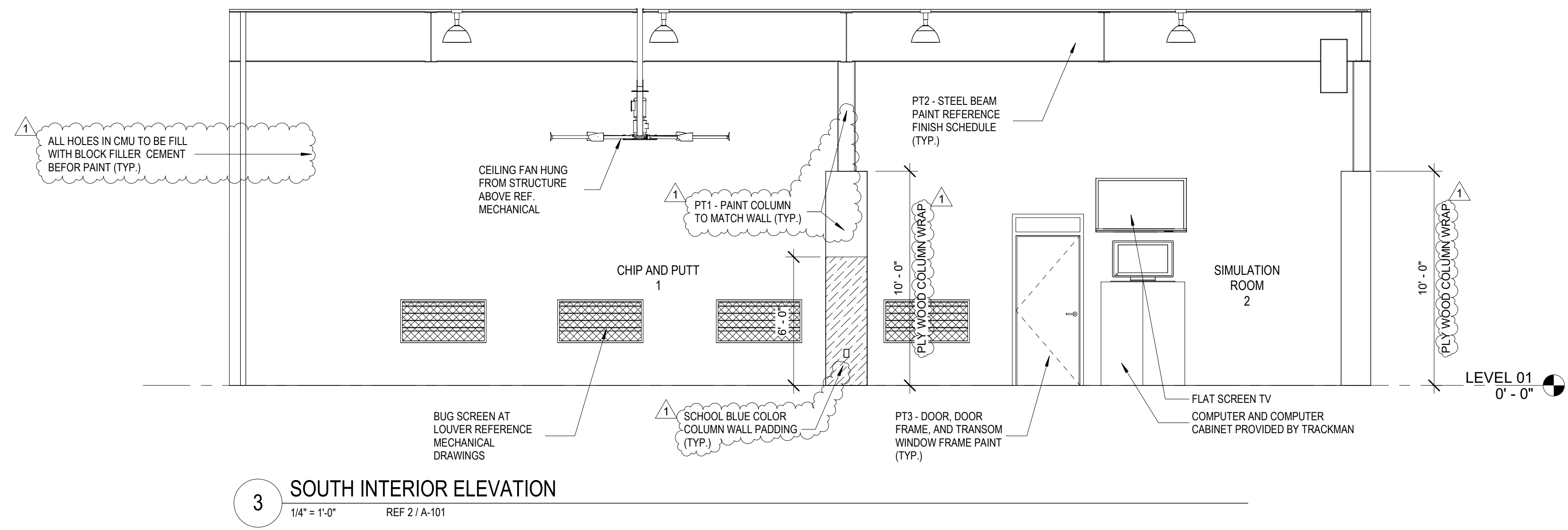
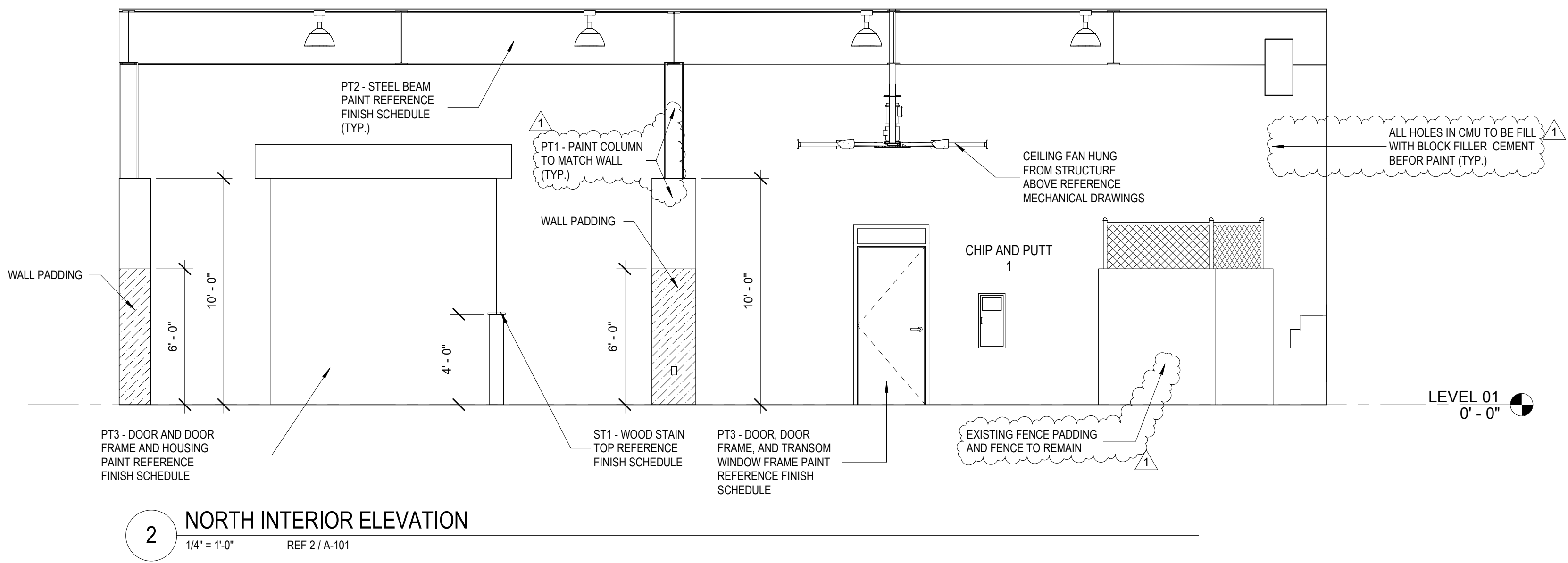
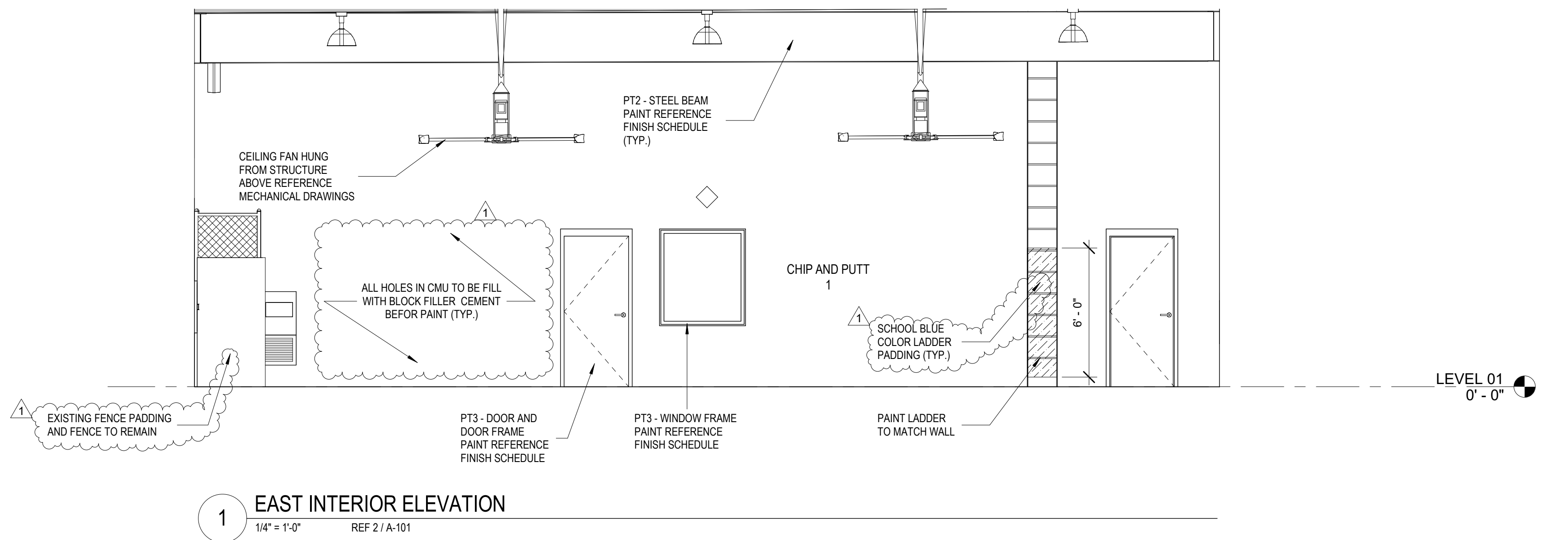
PROJECT TEAM DRAWN BY
Ed Studio EA

PROJECT PHASE
100% CD Package

SHEET CONTENTS
FLOOR PLAN AND
DEMOLITION FLOOR PLAN

SHEET NO.
A-101
AGENCY NO.

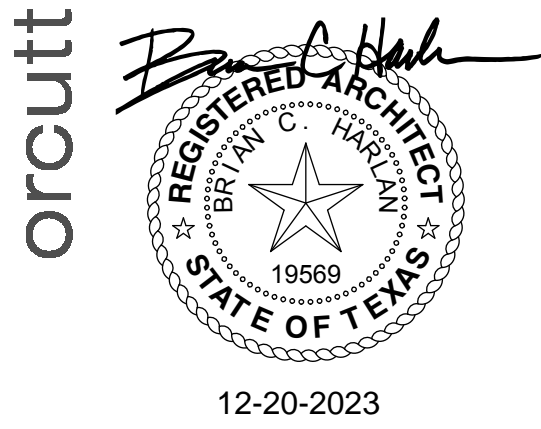
12/20/2023 10:24:42 AM orcutt|winslow / 2022-079 / INDOOR GOLF FACILITY - FRANK SEALE MIDDLE SCHOOL / SCHEMATIC DESIGN / A-202- INTERIOR ELEVATIONS / EA
C:\Users\arva\Documents\2023_079_MidlothianIndoor_Golf_Facility_arva.ea.rvt



GENERAL SHEET NOTES

- A. Paint all exposed metal that is not specified to receive paint finish.
- B. All exposed flashing shall be factory finished.

2929 n central ave
eleventh floor
phoenix, az 85012
602.257.1764 t
www.owp.com



© 2024 This hard copy or electronic drawing is an instrument of service and the property of orcutt|winslow and shall remain their property. The design professional shall not be responsible for any alterations, modifications or additions made to this drawing in any way other than the design professional. Use of this drawing shall be limited to the original use for which it was prepared and the professional reserves the right to be limited to such use, re-use or reproduction. Unless otherwise agreed in writing, design professional shall not be liable for any other purpose without the design professional's written consent. Publication in any medium without or partial prohibition without the written permission of the design professional. Any information obtained or conclusions derived from this drawing shall be at the user's sole risk.

FRANK SEALE MIDDLE SCHOOL
INDOOR GOLF FACILITY
700 GEORGE HOPPER RD, MIDLOTHIAN, TX 75065

CLIENT CONTACT
MIDLOTHIAN ISD
100 WALTER STEPHENSON RD.
Midlothian, TX 76065

648-856-5000 T Jose Martinez
jose.martinez@midlothianisd.org

OWP PROJECT NO. DATE OF ISSUE
2022-079 02.27.2024

REVISIONS		
DELTA	DESCRIPTION	DATE
1	ADD EXEMPT	12.20.2023

PROJECT TEAM DRAWN BY
Ed Studio EA

PROJECT PHASE
100% CD Package

SHEET CONTENTS
INTERIOR ELEVATIONS

SHEET NO.
A-202
AGENCY NO.

12/19/2023 12:21:37 PM orcutt\winslow / 2022-079 / INDOOR GOLF FACILITY - FRANK SEALE MIDDLE SCHOOL / SCHEMATIC DESIGN / E-101- ELECTRICAL FLOOR PLAN / WIN Autodesk Docs:Midlothian ISD - Indoor Golf Simulator Build-Out\2023-05286_MidlothianISD_Indoor_Golf_Facility_MEPT_L023.rvt

SYMBOL SCHEDULE

SYMBOL	DESCRIPTION (DISREGARD ITEMS NOT SHOWN ON PLANS)	SYMBOL	DESCRIPTION (DISREGARD ITEMS NOT SHOWN ON PLANS)
SWITCHES			
\$	LINE VOLTAGE SINGLE POLE SWITCH	CIRCUITING	
\$2	LINE VOLTAGE 2-POLE SWITCH	—	CONDUIT
\$3	LINE VOLTAGE 3-WAY SWITCH	- - -	CONDUIT BELOW FLOOR, SLAB, OR GRADE
\$4	LINE VOLTAGE 4-WAY SWITCH	SUBSCRIPTS AND ABBREVIATIONS	
\$K	LINE VOLTAGE KEYED SWITCH	WP	INDICATES WEATHERPROOF
\$3K	LINE VOLTAGE KEYED 3-WAY SWITCH	WG	INDICATES WIREGUARD
\$D	LINE VOLTAGE WALL DIMMER SWITCH, SIZE AND TYPE AS REQUIRED	H	INDICATES HORIZONTAL
\$VD	LINE VOLTAGE WALL MOUNTED DIMMER SWITCH WITH VACANCY SENSOR, MANUAL ON / AUTO OFF.	TL	INDICATES TWIST LOCK
\$V	LINE VOLTAGE WALL MOUNTED SWITCH WITH VACANCY SENSOR, MANUAL ON / AUTO OFF.	NL	LIGHT FIXTURE ON NIGHT LIGHT CIRCUIT
\$OC	LINE VOLTAGE WALL MOUNTED SWITCH WITH VACANCY SENSOR, AUTO ON / AUTO OFF.	ERMS	ENERGY REDUCTION MAINTENANCE SWITCH
\$P	LINE VOLTAGE SWITCH WITH PILOT LIGHT	1-L	REFER TO ONE-LINE DIAGRAM
\$MC	MOMENTARY CONTACT SWITCH	F-	INDICATES WALL MOUNTED DEVICE
[B]	PUSH BUTTON	NEXT TO ANY SYMBOL, INDICATES FINAL ROUGH-IN FIELD COORDINATION BY CONTRACTOR WITH ARCHITECTURAL, MILLWORK DRAWINGS AND OTHER TRADES	
\$TH	6-HOUR TIMER SWITCH WITH HOLD	GENERAL NOTES:	
\$T	6-HOUR TIMER SWITCH WITH NO HOLD	-ALL EXTERIOR BUILDING ELECTRICAL EQUIPMENT TO BE WEATHERPROOF NEMA-3R MINIMUM.	
◇	20 AMP GENERATOR TRANSFER DEVICE		
LOW VOLTAGE LIGHTING CONTROLS			
\$R	LOW VOLTAGE LIGHTING CONTROLLER WALL SWITCH		
\$B	BMC5 TIMER LOCAL OVERRIDE SWITCH		
◇	CEILING MOUNTED PHOTO SENSOR		
◇	CEILING MOUNTED VACANCY SENSOR, MANUAL ON / AUTO OFF		
◇	CEILING MOUNTED OCCUPANCY SENSOR, AUTO ON / AUTO OFF		
◇	LIGHTING CONTROLLER WITH GTD, ZONES AS REQUIRED.		
RECEPTACLES AND OUTLETS			
⊖	SIMPLEX RECEPTACLE		
⊖	DUPLEX RECEPTACLE		
⊖	POWER POLE		
⊖	125/250 VOLT, 1 PHASE, 3-WIRE, 20 AMPS UNLESS NOTED OTHERWISE		
⊖	DOUBLE DUPLEX IN 2-GANG BOX WITH SINGLE COVER PLATE		
⊖	DOUBLE DUPLEX GROUND FAULT CIRCUIT INTERRUPTER RECEPTACLE IN 2-GANG BOX WITH SINGLE COVER PLATE		
⊖	DUPLEX GROUND FAULT CIRCUIT INTERRUPTER RECEPTACLE		
⊖	FLUSH FLOOR CONCEALED SERVICE DUPLEX RECEPTACLE OUTLET		
⊖	FLUSH FLOOR CONCEALED SERVICE DOUBLE DUPLEX RECEPTACLE OUTLET		
⊖	CONCEALED SERVICE MULTI-ACCESS FLOOR BOX WITH WIRING DEVICES AS INDICATED ON DRAWINGS. SIZE TO MATCH DEVICE QUANTITIES		
[R]	REMOTE BLANK FACE GFCI DEVICE		
⊖U	PROVIDE DUPLEX POWER RECEPTACLE AND USB OUTLET PER SPECIFICATION 26 27 73 WITH QUADRUPLX OUTLET COVER PLATE.		
[CR]	E.C. TO PROVIDE ROUGH-IN FOR CARD READER JUNCTION BOX. REFER TO TECHNOLOGY SHEETS FOR ADDITIONAL INFORMATION.		
⊖SR	SWITCH CONTROLLED RECEPTACLE WITH THE TOP RECEPTACLE LOAD CONTROLLED VIA PLUG LOAD SWITCH MEETING 2021 IECC 405.11 REQUIREMENTS. SPLIT LOAD-CONTROLLED RECEPTACLES SHALL BE PERMANENTLY FACTORY MARKED AS CONTROLLED.		

CONTRACTOR NOTES:

IT IS THE RESPONSIBILITY OF THE CONTRACTORS TO NOTIFY THE ARCHITECT OF ANY DISCREPANCIES ENCOUNTERED ON THE PLANS OR IN EXISTING SITE CONDITIONS PRIOR TO COMMENCEMENT OF WORK.

CONTRACTOR SHALL VISIT THE SITE AND FAMILIARIZE THEMSELVES WITH EXISTING CONDITIONS AND SATISFY THEMSELVES AS TO THE NATURE AND SCOPE OF THE WORK. THE BASE PROPOSAL SHALL INCLUDE MODIFICATIONS TO SYSTEMS AND DEVICES AS REQUIRED BY STATE AND LOCAL CODES WHETHER INDICATED OR NOT ON CONTRACT DOCUMENTS. THE SUBMISSIONS OF A PROPOSAL WILL BE EVIDENCE THAT SUCH AN EXAMINATION AND COMPLIANCE WITH GOVERNING CODES/REQUIREMENTS HAS BEEN MADE. LATER CLAIMS FOR LABOR, EQUIPMENT, OR MATERIALS REQUIRED OR FOR DIFFICULTIES ENCOUNTERED WHICH COULD HAVE BEEN FORESEEN HAD AN EXAMINATION AND CODE/REQUIREMENTS REVIEW BEEN MADE, WILL NOT BE ACCEPTED.

CONTRACTOR TO VERIFY THAT ALL EXISTING CONDUITS, J-BOXES, ETC. ARE NOT DAMAGED, IN GOOD SHAPE, SUPPORTED PROPERLY AND HAVE NO EXPOSED WIRING. CONTRACTOR IS TO PERFORM AN EXTENSIVE WALK THROUGH THE BUILDING PRIOR TO BIDDING TO VERIFY ALL EXISTING CONDITIONS THAT NEED REPAIR ARE IN BASE BID. NO EXCEPTIONS.

ONE LINE DIAGRAM

2

Scale: N.T.S.

POWER FLOOR PLAN

1

Scale: 1/8" = 1'-0"

POWER GENERAL NOTES

- ELECTRICAL CONTRACTOR SHALL NOTIFY THE ENGINEER OF ANY PROBLEMS PERTAINING TO CIRCUIT AVAILABILITY OR LOAD CAPACITY PRIOR TO INSTALLATION.
- CONTRACTOR SHALL REFER TO MECHANICAL AND PLUMBING DRAWINGS FOR EXACT LOCATION OF MECHANICAL AND PLUMBING EQUIPMENT AND SCHEDULES. CONTRACTOR SHALL PROVIDE ALL ELECTRICAL DISCONNECTS, BRANCH CIRCUITRY, STARTERS/CONTROLS, CIRCUIT BREAKERS AND CONNECTIONS REQUIRED TO POWER EQUIPMENT.
- CONTRACTOR TO COORDINATE EXACT LOCATION OF DISCONNECT SWITCHES, JUNCTION BOXES AND SINGLE POLE TOGGLE SWITCHES FOR MECHANICAL EQUIPMENT WITH MECHANICAL CONTRACTOR PRIOR TO INSTALLATION.
- ALL RECEPTACLES LOCATED WITHIN 6'-0" OF SINK SHALL BE GFCI TYPE.
- CONTRACTOR SHALL COORDINATE EXACT LOCATIONS OF RECEPTACLES AND SWITCHES WITH ARCHITECTURAL ELEVATIONS PRIOR TO ELECTRICAL ROUGH-IN. ADJUST DEVICES AS REQUIRED SO THAT NO DEVICES ARE INSTALLED BEHIND CABINETS OR SHELVES.
- ALL BLANK FACE GFCI DEVICES SHALL BE INSTALLED IN A READILY ACCESSIBLE LOCATION AND NOT BEHIND EQUIPMENT.
- CONTRACTOR SHALL REFER TO TECHNOLOGY SERIES CONSTRUCTION DOCUMENTS FOR EXACT LOCATION AND REQUIREMENTS OF ALL LOW VOLTAGE BACK BOXES, FITTINGS, AND CONDUITS. REFER TO SPECIFICATIONS FOR ADDITIONAL REQUIREMENTS.
- ALL EXTERIOR OUTLETS SHALL BE WP GFI IN METAL WHILE-IN-JUSE LOCKABLE ENCLOSURE WITH EXCEPTION TO INTEGRAL RTU RECEPTACLES.

ELECTRICAL POWER KEYED NOTES

- CONNECT RECEPTACLE TO NEAREST AVAILABLE 120V CIRCUIT. CONTRACTOR TO VERIFY CIRCUIT AMPACITY DOES NOT EXCEED 16A.
- NEW BIG ASS FAN. CONNECT TO CIRCUIT INDICATED ON FLOOR PLAN.
- EXISTING UNIT HEATER TO BE RELOCATED HERE. ELECTRICAL CONTRACTOR TO COORDINATE FINAL LOCATION WITH MECHANICAL CONTRACTOR AND EXTEND EXISTING CONDUCTORS AND CONDUIT TO NEW LOCATION.
- SPEED DIAL FOR HVLS FAN. CONTROL TO BE CONNECTED TO FIRE ALARM RELAY DEVICE FOR AUTOMATIC SHUT OFF. COORDINATE FINAL LOCATION OF SPEED DIAL WITH ARCHITECT PRIOR TO ROUGH-IN.
- PROVIDE J-BOX FOR TRACKMAN GOLF SIMULATOR PROVIDED LIGHT. CONNECT J-BOX TO NEAREST AVAILABLE 120V CIRCUIT. ELECTRICAL CONTRACTOR TO VERIFY CIRCUIT AMPACITY DOES NOT EXCEED 16A. ELECTRICAL CONTRACTOR TO COORDINATE FINAL LOCATION AND REQUIREMENTS WITH TRACKMAN GOLF SIMULATOR LIGHTING PROVIDER PRIOR TO ROUGH-IN.
- NEW CEILING RECEPTACLE FOR GOLF SIMULATOR PROJECTOR. ELECTRICAL CONTRACTOR TO COORDINATE FINAL LOCATION WITH ARCHITECT PRIOR TO ROUGH-IN.
- EXISTING FIRE ALARM PULL STATION TO BE SHIFTED 6" TOWARDS DOOR.

LIGHTING NOTE:

ALL LIGHTING IS EXISTING TO REMAIN.

Exist. Branch... L

Location:

Supply From:

Mounting: Surface

Volts: 120/208 Wye

Phases: 3

Wires: 4

A.I.C. Rating: EXIST.

Enclosure: Type 1

Mains: 80A MCB

Phase in kVA

Note	CKT	Circuit Description	Wire	Breaker	A	B	C	Breaker	Wire	Circuit Description	CKT	Note
--	1	EXISTING CIRCUIT	--	20	1	1.0 / 1.0		1	20	EXISTING CIRCUIT	2	--
--	3	EXISTING CIRCUIT	--	20	1		1.0 / 1.0	1	20	EXISTING CIRCUIT	4	--
--	5	EXISTING CIRCUIT	--	20	1		1.0 / 1.0	1	20	EXISTING CIRCUIT	6	--
--	7	EXISTING CIRCUIT	--	20	1	1.0 / 1.0		1	20	EXISTING CIRCUIT	8	--
--	9	EXISTING CIRCUIT	--	20	1		1.0 / 1.0	1	20	EXISTING CIRCUIT	10	--
--	11	EXISTING CIRCUIT	--	20	1		1.0 / 1.0	1	20	EXISTING CIRCUIT	12	--
--	13	EXISTING CIRCUIT	--	20	1	1.0 / 1.0		1	20	EXISTING CIRCUIT	14	--
--	15	EXISTING CIRCUIT	--	20	1		1.0 / 1.0	1	20	EXISTING CIRCUIT	16	--
--	17	EXISTING CIRCUIT	--	20	1		1.0 / 1.0	1	20	EXISTING CIRCUIT	18	--
--	19	EXISTING CIRCUIT	--	20	1	1.0 / 1.0		1	20	EXISTING CIRCUIT	20	--
--	21	HVLS-1	#12	20	1	4.5 / 0.2		1	20	#12 REC - GOLF SIMULATOR PROJECTOR	22	--
--	23	HVLS-1	20	1			4.5 / 0.0	1	--	SPACE	24	--
--	25	SPACE	--	--	1	0.0 / 0.0		1	--	SPACE	26	--
			Total Amps:		67 A	92 A	90 A					
Load Classification			Connected Load		Demand Factor		Estimated Demand		Panel Totals			
HVAC			8.9 kVA		100.00%		8.9 kVA		Total Conn. Load: 29.1 kVA			
Lighting			0.0 kVA		0.00%		0.0 kVA		Total Est. Demand: 29.1 kVA			
Receptacles			0.2 kVA		100.00%		0.2 kVA		Total Conn. Current: 81 A			
Spare			20.0 kVA		100.00%		20.0 kVA		Total Est. Demand Current: 81 A			
Notes:												
CONTRACTOR TO VERIFY MAIN SIZE ON PANEL SCHEDULE.												
Abbreviations:												
G - PROVIDE GFCI CIRCUIT BREAKER												
LF - PROVIDE PERMANENT LOCK-OFF DEVICE												
LO - PROVIDE PERMANENT LOCK-ON DEVICE												

CLIENT CONTACT

MIDLOTHIAN ISD

100 WALTER STEPHENSON RD.

Midlothian, TX 76065

648-856-5000 T

Jose Martinez

Jose.martinez@midlothianisd.org

OWP PROJECT NO.

DATE OF ISSUE

2022-079

12.1.2023

REVISIONS

DELTA	DESCRIPTION	DATE
1	Addendum 1	12/20/23

PROJECT TEAM

DRAWN BY

Ed Studio

MN

PROJECT PHASE

100% CD Package

SHEET CONTENTS

ELECTRICAL FLOOR PLAN

SHEET NO.

E-101

AGENCY NO.

Salas O'Brien.

salasobrien.com

106 Decker Drive, Suite 200

Irving, TX 75062

Registration: F-4111

Project Number: 2023-05286

972-812-1270

2929 n central ave

eleventh floor

phoenix, az 85012

602.257.1764 t

www.owp.com

oreutt winslow

STATE OF TEXAS

KETH W. GASSMAN

12/20/23

© 2023 This hard copy or electronic drawing is an instrument of service and the property of oreutt winslow and shall remain their property. The design professional shall not be responsible for any alterations, modifications or additions made to this drawing by any party other than the design professional. Use of this drawing shall be limited to the original use for which it was prepared and no reproduction, in whole or in part, shall be made without the written consent of oreutt winslow. This drawing, and its contents, shall be the property of oreutt winslow and shall remain their property. Any reproduction, in whole or in part, shall be the property of oreutt winslow and shall remain their property. Any reproduction, in whole or in part, shall be the property of oreutt winslow and shall remain their property. Any reproduction, in whole or in part, shall be the property of oreutt winslow and shall remain their property.

DIVISION 26 - ELECTRICAL

SECTION 260500 - COMMON WORK RESULTS

PART 1 - GENERAL

1. GENERAL NOTES

- DRAWINGS AND GENERAL PROVISIONS OF THE CONTRACT, INCLUDING GENERAL AND SUPPLEMENTARY CONDITIONS AND ALL OTHER SPECIFICATIONS SECTIONS, APPLY TO THIS AND THE OTHER DIVISIONS OF DIVISION 26.
- THE CONTRACTOR FOR THIS DIVISION OF WORK IS REQUIRED TO OBTAIN A COMPLETE SET OF BID DOCUMENTS (DRAWINGS AND SPECIFICATIONS) AND FULLY REVIEW THEM. COORDINATE DIVISION 26 WORK WITH THAT OF ALL OTHER DIVISIONS OF WORK.
- THE DRAWINGS AND SPECIFICATIONS ARE INTENDED TO SUPPLEMENT EACH OTHER. ANY LABOR OR MATERIAL CALLED FOR IN ONE SHALL BE FURNISHED AND INSTALLED EVEN THOUGH NOT SPECIFICALLY MENTIONED IN BOTH. ANY LABOR OR MATERIAL WHICH IS NEITHER SHOWN ON THE DRAWINGS OR CALLED FOR IN THE SPECIFICATIONS, BUT WHICH IS OBVIOUSLY REQUIRED TO COMPLETE THE WORK, AND WHICH IS NORMALLY INCLUDED IN WORK OF SIMILAR CHARACTER, SHALL BE FURNISHED AND INSTALLED AS PART OF THIS CONTRACT.
- THE CONTRACTOR IS RESPONSIBLE FOR SCHEDULING THE COMPLETION AND INSPECTION OF THIS WORK TO COMPLY WITH THE OWNER'S SCHEDULE AND PROJECT COMPLETION DATE.
- SCOPE OF WORK
 - THE DESCRIPTION OF GENERAL CONDITION WORK IN THIS DIVISION SHALL ALSO APPLY TO DIVISION 23.
 - THIS CONTRACTOR SHALL PROVIDE ALL LABOR, MATERIALS, EQUIPMENT, TOOLS, TRANSPORTATION, INCIDENTALS AND DETAILS NECESSARY TO PROVIDE A COMPLETE ELECTRICAL AND FIRE ALARM SYSTEM AS SHOWN ON THE DRAWINGS, CALLED FOR IN THE SPECIFICATIONS AND AS REQUIRED BY JOB CONDITIONS. WORK IS TO BE COMPLETE IN EVERY RESPECT, WHETHER SPECIFICALLY MENTIONED IN THE CONTRACT DOCUMENTS OR NOT.
 - ALL WORK NOT SPECIFICALLY NOTED AS BEING BY THE OWNER (BUILDING OWNER, LANDLORD, OR TENANT), SHALL BE PROVIDED BY THIS CONTRACTOR.
 - THIS WORK, MATERIALS, AND EQUIPMENT INCLUDES, BUT IS NOT LIMITED TO THE FOLLOWING ITEMS:
 - A COMPLETE ELECTRICAL DISTRIBUTION SYSTEM INCLUDING THE INSTALLATION OF ELECTRICAL PANELBOARDS, TRANSFORMERS, SAFETY AND DISCONNECT SWITCHES, MOTOR STARTERS, VFD'S AND LIGHTING.
 - CONTRACTOR MUST ALSO INCLUDE IN BID ALL NECESSARY MATERIALS REQUIRED TO COMPLETE THE SYSTEM INCLUDING, BUT NOT LIMITED TO FEEDERS, BRANCH CIRCUITS, JUNCTION BOXES, OUTLET BOXES, WIRING DEVICES, COVER PLATES, CONDUITS, ETC.
 - METERING REQUIRED PER DRAWING AND/OR OWNER.
 - THE WIRING OF MECHANICAL EQUIPMENT SHALL BE AS OUTLINED ON THE BID SET DRAWINGS AND IN THE SPECIFICATIONS. WORK SHALL INCLUDE, BUT NOT BE LIMITED TO, THE WIRING OF VFD'S, AND POWER WIRING OF MECHANICAL EQUIPMENT EXCEPT AS SPECIFICALLY NOTED OTHERWISE. ALL LOW VOLTAGE (24 VOLT) EMS TEMPERATURE CONTROL WIRING SHALL BE THE RESPONSIBILITY OF THE MECHANICAL CONTRACTOR UNLESS NOTED SPECIFICALLY OTHERWISE.
 - INSTALLATION OF LIGHT FIXTURES AND LAMPS AS SHOWN ON THE DRAWINGS INCLUDING ALL DEVICES, EQUIPMENT, ETC. REQUIRED FOR MOUNTING.
 - A COMPLETE CONDUIT SYSTEM INCLUDING BRANCH CONDUITS, OUTLET BOXES, PULL WIRES, GROUND CONDUCTORS, COVER PLATES, ETC. OR AS SPECIFICALLY NOTED OTHERWISE ON THE DRAWINGS.
 - A COMPLETE EMERGENCY AND EXIT LIGHTING SYSTEM AS SHOWN ON THE DRAWINGS.
 - TEMPORARY SERVICE AS REQUIRED FOR CONSTRUCTION, INCLUDING ITS REMOVAL.
 - SMOKE/FIRE ALARM WIRING, DEVICES, AND CONDUIT, AS DESCRIBED ON DRAWINGS OR AS NECESSARY TO MEET OWNER, STATE, LOCAL, INSURANCE, AND FIRE DEPARTMENT REQUIREMENTS.
 - INSTALLATION OF CONDUITS THUBBED TO BE ABOVE CEILING FOR HVAC CONTROLS AND FUTURE LOADS, BALANCING LOADS.

3. CODES

- ALL WORK SHALL CONFORM TO THE OWNER'S CRITERIA, STATE, COUNTY, CITY, AND LOCAL CODES AND ORDINANCES, SAFETY AND HEALTH CODES, NFPA CODES, ENERGY CODES, AND ALL OTHER APPLICABLE CODES AND REQUIREMENTS. THIS CONTRACTOR SHALL INCLUDE ANY CHANGES REQUIRED BY CODES IN THE BID AND IF THESE CHANGES ARE NOT INCLUDED IN THE BID, THEY MUST BE QUALIFIED AS A SEPARATE LINE ITEM IN THE BID. AFTER CONTRACT IS AWARDED, CHANGE ORDERS FOR INCREASED COSTS DUE TO CODE ISSUES WILL NOT BE ACCEPTED UNLESS ALLOWANCES HAVE BEEN PREVIOUSLY AGREED UPON.

4. LICENSES, PERMITS, INSPECTION, AND FEES

- THIS CONTRACTOR SHALL OBTAIN AND PAY FOR ALL LICENSES, PERMITS, INSPECTIONS AND FEES REQUIRED OR RELATED TO THIS WORK. ALL CONSTS ASSOCIATED WITH THESE SHALL BE PAID FOR BY THE CONTRACTOR AND INCLUDED AS PART OF THE BID.
- FURNISH TO THE OWNER ALL CERTIFICATES OF INSPECTION AND FINAL INSPECTION APPROVAL AT THE COMPLETION OF THE PROJECT.

5. GUARANTEE

- ALL MATERIALS, EQUIPMENT, AND WORKMANSHIP SHALL BE GUARANTEED FOR A PERIOD OF 1 YEAR FROM THE DATE OF ACCEPTANCE (OFFICIAL DATE IN WRITING) OF THE PROJEC. ALL WORK FOUND TO BE DEFECTIVE SHALL BE REPAIRED OR REPLACED BY THE CONTRACTOR AT NO COST TO THE OWNER.
- WHERE SPECIFIC EQUIPMENT IS NOTED TO HAVE EXTENDED WARRANTIES, THE CONTRACTOR SHALL BE RESPONSIBLE FOR THE PROPER REGISTRATION SO THE OWNER CAN MAKE ALL APPROPRIATE CLAIMS.

6. RECORD DRAWINGS

- THIS CONTRACTOR SHALL MAINTAIN ONE SET OF DRAWINGS ON THE JOBSITE, UPDATED WEEKLY, TO RECORD ALL DEVIATIONS FROM THE CONTRACT DOCUMENTS SUCH AS:
 - LOCATIONS OF CONCEALED CONDUITS.
 - PANEL DESCRIPTIONS, CIRCUIT DIRECTIONS, AND LABELS.
 - REVISIONS, ADDENDUMS, AND CHANGE ORDERS.
 - SIGNIFICANT DEVIATIONS MADE NECESSARY BY FIELD CONDITIONS, APPROVED EQUIPMENT SUBSTITUTIONS, AND CONTRACTOR'S COORDINATION WITH OTHER TRADES.
- DELIVER RECORD DRAWINGS TO THE OWNER AT PROJECT COMPLETION.

7. DEMOLITION

- THIS CONTRACTOR SHALL BE RESPONSIBLE FOR THE COORDINATION OF THE DEMOLITION OF EXISTING WORK AND THE DEMOLITION PROVIDED BY THE GENERAL CONTRACTOR. COORDINATE WITH THE GENERAL CONTRACTOR ALL EXISTING EQUIPMENT REQUIRED TO BE LEFT INTACT.
- THIS CONTRACTOR SHALL INCLUDE, AND WILL BE RESPONSIBLE FOR, THE REMOVAL OF ALL EXISTING CONDUIT, FIRE ALARM SYSTEM, SWITCH GEAR, AND EQUIPMENT, ETC. UNLESS SPECIFICALLY NOTED OTHERWISE. CONTRACTOR MUST VERIFY WITH THE OWNER ALL PRESUMED ABANDONED EQUIPMENT, CONDUIT, AND SWITCH GEAR PRIOR TO REMOVAL. EXISTING ABANDONED CONDUIT OR EQUIPMENT IN THE FLOOR, EMBEDDED IN CONCRETE, OR OTHERWISE INACCESSIBLE, ARE TO BE CUT OFF AND SEALED BELOW OR WITHIN FLOOR OR WALL LEVEL WHEN THEY ARE NOT TO BE REUSED IN THIS PROJECT. IF REQUIRED BY OWNER OR CODES, ABANDONED CONDUIT MUST BE REMOVED TO POINT OF ORIGIN. CONFIRM EXTENT OF DEMOLITION PRIOR TO BID AND INCLUDE PROPOSAL.
- TEMPORARY LIGHT AND POWER
 - THE CONTRACTOR SHALL FURNISH AND INSTALL ALL TEMPORARY WIRING AND RELATED GROUND FAULT INTERRUPTION PROTECTION LIGHT AND POWER FOR ALL CONTRACTORS DURING CONSTRUCTION AND IS RESPONSIBLE FOR ITS REMOVAL.

PART 2 - PRODUCTS

- MATERIALS
 - MATERIALS UTILIZED IN THE CONSTRUCTION OF THIS PROJECT SHALL BE NEW AND CARRY ALL UL LABELS WHERE APPLICABLE, UNLESS APPROVED BY THE OWNER.
 - ANY USED EQUIPMENT OR MATERIALS USED SHALL STILL CARRY THE SPECIFIED 1 YEAR GUARANTEE AND APPROVAL OF THE USE OF THIS EQUIPMENT OR MATERIALS DOES NOT RELIEVE THE CONTRACTOR FROM ENSURING EVERYTHING IS OPERATIONAL.
- MANUFACTURERS
 - WHERE TRADE NAMES OR MANUFACTURERS ARE USED ON THE DRAWINGS OR IN THE SPECIFICATIONS, THE EXACT EQUIPMENT SHALL BE CONSIDERED THE BASIS OF DESIGN AND USED AS A MINIMUM FOR THE BASE BID. MANUFACTURERS CONSIDERED AS AN EQUAL OR BETTER IN ALL ASPECTS TO THAT SPECIFIED, WILL BE SUBJECT TO APPROVAL. IN WRITING BY THE ENGINEER THROUGH THE SHOP DRAWING SUBMITTAL PROCESS, FOR ACCEPTANCE PRIOR TO INSTALLATION. THE USE OF ANY UNAUTHORIZED EQUIPMENT SHALL BE REPLACED AT THE CONTRACTOR'S EXPENSE.
- SLEEVES
 - PROVIDE SLEEVES TO PROTECT EQUIPMENT OR FACILITIES IN THE INSTALLATION. EACH SLEEVE SHALL EXTEND THROUGH ITS RESPECTIVE FLOOR, WALL, OR PARTITION AND SHALL BE CUT FLUSH WITH EACH SURFACE EXCEPT SLEEVES THAT PENETRATE THE FLOOR, WHICH SHALL EXTEND 2 INCHES ABOVE THE FLOOR.
 - CONTRACTOR SHALL COORDINATE THROUGH THE GENERAL CONTRACTOR AND OWNER ANY CORE DRILLING OR CUTTING OF OPENINGS IN MASONRY WALLS OR CONCRETE FLOORS.
 - ALL SLEEVES AND OPENINGS THROUGH FIRE RATED WALLS AND FLOORS SHALL BE FIRE SEALED. REFER TO "FIRE STOPPING".
 - SLEEVES IN BEARING AND MASONRY WALLS, FLOORS, AND PARTITIONS SHALL BE STANDARD WEIGHT STEEL PIPE FINISHED WITH SMOOTH EDGES. FOR OTHER THAN MASONRY PARTITIONS, THROUGH SUSPENDED CEILINGS, OR FOR CONCEALED VERTICAL PIPING, SLEEVES SHALL BE MINIMUM NO. 22 USS GALVANIZED STEEL.
- FLAME SPREAD PROPERTIES OF MATERIALS
 - MATERIALS USED ON THIS PROJECT SHALL EACH HAVE A FLAME SPREAD RATING OF 25 OR LESS, AND A SMOKE DEVELOPED RATING OF 50 OR LESS, AS DETERMINED BY AN INDEPENDENT TESTING LABORATORY IN ACCORDANCE WITH NFPA-255.
- FIRE STOPPING
 - PROVIDE FIRE STOPPING IN SEALING OF PENETRATIONS IN FIRE-RATED CONSTRUCTION, HORIZONTAL, AND VERTICAL, INCLUDING THE FOLLOWING MATERIALS:
 - FOAM DOW CORNING FIRESTOP SILICONE RTV FOAM, CAT #2001 LIQUID COMPONENT PART A (BLACK) AND LIQUID COMPONENT PART B (OFF-WHITE)
 - SEALANT: 3M 1000 NS AND 1003 SS. SILICONE ADHESIVE SEALANT.
 - DAMMING MATERIALS: MINERAL FIBERBOARD, AS SELECTED BY THE APPLICATOR.
- MIXES SHALL CONFORM TO THE MANUFACTURERS DIRECTIONS.
- FLOOR, CEILING, AND WALL PLATES
 - PROVIDE CHROME-PLATED, ONE-PIECE, ESCUTCHEONS ON CONDUITS AND HANGER RODS PENETRATING THE WALLS, FLOORS, AND CEILINGS IN FINISHED AREAS OF THE BUILDING. SPLIT RING ESCUTCHEONS ARE NOT ACCEPTABLE. EQUIPMENT FOUNDATIONS AND SUPPORTS.
- EQUIPMENT FOUNDATIONS AND SUPPORTS
 - PROVIDE FOUNDATIONS AND SUPPORTS FOR ELECTRICAL EQUIPMENT AS REQUIRED. THESE SHALL INCLUDE REINFORCED CONCRETE HOUSEKEEPING PADS FOR ANY DISTRIBUTION EQUIPMENT INSTALLED INDOORS ON THE FLOOR. PADS SHALL EXTEND A MINIMUM OF 3 INCHES BEYOND EQUIPMENT IN ALL DIRECTIONS.

PART 3 - EXECUTION

1. SPACE AND EQUIPMENT ARRANGEMENT

- EACH CONTRACTOR SHALL BE RESPONSIBLE TO SEE THAT THEIR PURCHASED EQUIPMENT WILL FIT THE SPACES AVAILABLE. IN CERTAIN INSTANCES, HE WILL NOTE THAT THE EQUIPMENT IS MENTIONED BY NAME IN THE EQUIPMENT SCHEDULES. IN THESE CASES, IT IS THAT EQUIPMENT WHOSE DIMENSIONS AND CONNECTION ARRANGEMENTS HAVE BEEN USED FOR THE PREPARATION OF THE LAYOUTS SHOWN ON THE WORKING DRAWINGS. SHOULD THE USE OF EQUIPMENT BY OTHER APPROVED MANUFACTURERS OR OF OTHER PHYSICAL SHAPE THAN THOSE SHOWN ON THE DRAWINGS BE PROPOSED, THE CONTRACTOR SHALL CONFIRM THE EQUIPMENT WILL FIT WITHIN THE ALLOTTED SPACE WITHOUT ARCHITECTURAL MODIFICATIONS OR IMPACT ON OTHER TRADES.
- ALL WORK SHALL BE INSTALLED SO AS TO BE READILY ACCESSIBLE FOR OPERATING, SERVICING, MAINTAINING, AND REPAIRING. PROVIDE SUFFICIENT SERVICE ACCESS TO ALL EQUIPMENT.
- BEFORE STARTING WORK, THIS CONTRACTOR SHALL EXAMINE THE ARCHITECTURAL, STRUCTURAL, FIRE PROTECTION, MECHANICAL, AND PLUMBING PLANS, SHOP DRAWINGS, AND SPECIFICATIONS TO SEQUENCE, COORDINATE, AND INTEGRATE THE VARIOUS ELEMENTS OF THE ELECTRICAL SYSTEM TO AVOID INTERFERENCES AND CONFLICTS.

2. MANUFACTURER'S DIRECTIONS

- THE MANUFACTURER'S PUBLISHED DIRECTIONS SHALL BE FOLLOWED IN THE DELIVERY, STORAGE, PROTECTION, INSTALLATION, AND WIRING OF ALL EQUIPMENT AND MATERIAL. THE CONTRACTOR SHALL PROMPTLY NOTIFY THE OWNER IN WRITING OF ANY CONFLICT BETWEEN THE REQUIREMENTS OF THE CONTRACT DOCUMENTS AND THE MANUFACTURER'S DIRECTIONS, AND SHALL OBTAIN INSTRUCTIONS BEFORE PROCEEDING WITH THE WORK. SHOULD THE CONTRACTOR PERFORM ANY WORK BEFORE RECEIVING SUCH INSTRUCTIONS, HE SHALL BEAR ALL COSTS ARISING IN CONNECTIONS WITH THE DEFICIENCIES.
- CONSTRUCTION REQUIREMENTS
 - THE DRAWINGS AND SPECIFICATIONS SHOW EQUIPMENT CONNECTIONS, CONDUIT, AND WIRE SIZE, GENERAL ROUTING AND LOCATION, AND DESCRIBE THE VARIOUS SYSTEMS. THESE DOCUMENTS DESCRIBE AND SIZE EQUIPMENT, ITS GENERAL LOCATION, USAGE, SUPPORT, AND AUXILIARY REQUIREMENTS. THEY DESCRIBE MOST, BUT NOT ALL OF THE MATERIALS AND THEIR USAGE FOR THIS PROJECT.
 - CONTRACT DOCUMENTS DO NOT DETAIL ALL JOB REQUIREMENTS. THEY DO NOT SHOW LAYOUTS, LOCATIONS, OR ELEVATIONS OF CONDUITS, ANCHORS, SLEEVES, HANGERS, JUNCTION BOXES, OR ACCESS DOORS. THEY DO NOT SHOW FINAL PRECISE LOCATIONS OF EQUIPMENT BY DIMENSIONS IN ALL INSTANCES.
 - THE EXACT LOCATION OF EACH ITEM SHALL BE DETERMINED BY REFERENCE TO THE PROJECT CONTRACTO DRAWINGS, AND TO THE DETAILS, EQUIPMENT DRAWINGS, AND ROUGH-IN DRAWINGS, BY MEASUREMENTS AT THE BUILDING, AND IN COOPERATION WITH THE VARIOUS TRADES. MINOR RELOCATION NECESSITATED BY THE CONDITIONS AT THE SITE OR DIRECTED BY THE OWNER SHALL BE MADE WITHOUT ADDITIONAL COST TO THE OWNER, WHERE CONFLICTS OCCUR, WORK IN THE AREA INVOLVED.
- EQUIPMENT FOUNDATIONS, HANGERS, AND SUPPORTS
 - FOR FLOOR MOUNTED ELECTRICAL EQUIPMENT, PROVIDE CONCRETE HOUSEKEEPING PADS NOT LESS THAN 3-1/2 INCHES THICK REINFORCED WITH NO. 3 DOWELS AND NO. 3 BARS, 2 FEET - 0 INCHES ON CENTER EACH WAY.
 - SUSPENDED EQUIPMENT SHALL HAVE SUPPORT CONSISTING OF MANUFACTURED METAL FRAMING OR HANGERS CONFORMING TO SECTION 260526.

5. INSTRUCTIONS TO OWNER'S PERSONNEL

- PROVIDE THE COMPETENT ENGINEERS OR TECHNICIANS TO INSTRUCT REPRESENTATIVES OF THE OWNER IN COMPLETE AND DETAILED OPERATION AND MAINTENANCE OF EACH ITEM OF EQUIPMENT AND EACH SYSTEM.
- THE CONTRACTOR SHALL BE FULLY RESPONSIBLE FOR PROPER MAINTENANCE OF EQUIPMENT AND SYSTEMS UNTIL THE INSTRUCTIONS HAVE BEEN GIVEN TO THE OWNER'S PERSONNEL AND THE LETTER OF RELEASE ACKNOWLEDGED.
- PROVIDE OPERATION & MAINTENANCE MANUALS (3 COPIES), ALONG WITH AS-BUILT SET OF PRINTS PRIOR TO SUBSTANTIAL COMPLETION OF THE PROJECT.

6. QUIET OPERATION

- THIS WORK SHALL BE INSTALLED IN SUCH A MANNER THAT UNDER ALL CONDITIONS OF LOAD, IT SHALL OPERATE QUIETLY. SHOCK OR VIBRATION WHICH IS OBJECTIONABLE IN THE OCCUPIED SPACES IN THE OPINION OF THE OWNER, IN THE CASE OF MOVING MACHINERY, SOUND, OR VIBRATION ANONYINGLY NOTICEABLE, MOVING INSIDE OF THE OWNER ROOM CAN BE CONSIDERED AS OBJECTIONABLE. IN ANY CASE, THE SITUATION SHALL BE REMEDIED AT NO COST TO THE OWNER.

7. CUTTING AND PATCHING

- PROVIDE ALL CUTTING, CHASING, AND CHANNELING REQUIRED FOR ANY WORK UNDER THIS DIVISION. CUTTING SHALL HAVE PRIOR APPROVAL FROM ARCHITECT AND OWNER.
- ALL PATCHING SHALL BE BY THE GENERAL CONTRACTOR AND SHALL MATCH THE SURROUNDING SURFACES.

8. TESTS

- THE CONTRACTOR INSTALLING THE ELECTRICAL SYSTEMS SHALL FOLLOW ALL TESTS AS REQUIRED TO PROVIDE COMPLIANCE WITH ALL LOCAL CODES.

END OF SECTION

SECTION 260519 - CONDUCTORS

PART 1 - GENERAL

1. SCOPE OF WORK

- REFER TO SECTION 260500.

PART 2 - PRODUCTS

1. SINGLE CONDUCTORS

- CONDUCTORS FOR FEEDERS AND BRANCH CIRCUITS SHALL BE COPPER AND THE AWG SIZE AND TYPE AS SHOWN ON DRAWINGS. MINIMUM WIRE SIZE #12 UNLESS NOTED OTHERWISE ON PLAN OR IN GENERAL NOTES FOR VOLTAGE DROP. THE CONDUCTORS SHALL BE 600 VOLT INSULATION, TYPE THW, THWN, OR THHN.
- CONDUCTORS MAY BE STRANDED FOR SIZES #10 AWG AND LARGER. CONDUCTOR SIZE #12 SHALL BE SOLID (NOT STRANDED).
- ALUMINUM CONDUCTORS ARE NOT PERMITTED. CONTRACTOR MUST OBTAIN WRITTEN PERMISSION FROM GENERAL CONTRACTOR AND ENGINEER WHEN USED.

2. MULTICONDUCTOR CABLES

- PROVIDE TYPE MC MULTICONDUCTOR CABLE IN COMPLIANCE WITH NEMA WC 70, WITH METAL CLAD AND GROUND #8 AWG WIRE AND LARGER.

3. CONNECTIONS

- WIRE CONNECTORS SHALL BE QUAL TO "SCOTCH LOCK" FOR #8 AWG WIRE AND SMALLER. USE T&B "LIGHTKIGHT" FOR #8 AWG WIRE AND LARGER.

PART 3 - EXECUTION

1. APPLICATIONS AND INSTALLATION

- ALL WIRING SHALL BE IN CONDUIT, UNLESS NOTED OTHERWISE (E-LOW VOLTAGE PLENUM RATED WIRE).
- THE USE OF SHARED NEUTRALS IS REQUIRED FOR LIGHTING CIRCUITS AND ALLOWED PER DRAWING NOTES. IT SHALL BE INSTALLED IN ACCORDANCE WITH THE NATIONAL ELECTRIC CODE AND LOCAL CODES.
- THE USE OF ROMEX, BX, ETC. IS NOT PERMITTED.
- ALL WIRING TO BE COLOR-CODED AS FOLLOWS:
 - 120/208 VOLT SYSTEM
 - NEUTRAL - WHITE
 - PHASE A OR L1 - BLACK
 - PHASE B OR L2 - RED
 - PHASE C OR L3 - BLUE
 - GROUND - GREEN
 - ISOLATED GROUND - GREEN WITH YELLOW TRACER
- UNLESS NOTED OTHERWISE, MC-CABLE IS ONLY ALLOWED WITHIN PARTITIONS OR MILLWORK AND LOCATIONS DESCRIBED IN SECTION 260533.

END OF SECTION

SECTION 260526 - GROUNDING

PART 1 - GENERAL

1. SCOPE OF WORK

- REFER TO SECTION 260500.

PART 2 - PRODUCTS

1. CONDUCTORS AND JUMPERS

- ALL CONDUIT, INCLUDING FLEXIBLE CONDUIT, SHALL BE GROUNDING WITH A GREEN COPPER GROUNDING CONDUCTOR.
- GROUNDING CONNECTIONS MADE TO THE WATER PIPING SYSTEM SHALL BE COORDINATED WITH THE PLUMBING CONTRACTOR AND A BONDING JUMPER INSTALLED AROUND WATER METER PER CODES AND AS INDICATED ON DRAWINGS.
- ALL DEVICES SHALL BE BONDED TO THE CONDUIT SYSTEM. USE A BONDING JUMPER BETWEEN THE OUTLET BOX AND THE DEVICE GROUNDING TERMINAL. METAL-TO-METAL CONTACT BETWEEN THE DEVICE YOKE AND THE OUTLET BOX IS NOT ACCEPTABLE AS A BOND FOR EITHER SURFACE MOUNTED BOXES OR FLUSH TYPE BOXES. ALL JUNCTION BOXES, OUTLET BOXES, AND PULL BOXES SHALL BE BONDED TO THE CONDUIT SYSTEM.

PART 3 - EXECUTION

1. INSTALLATION

- RUN A SEPARATE ISOLATED GROUNDING CONDUCTOR, #12 AWG MINIMUM, IN EACH CONDUIT FEEDING ISOLATED GROUND RECEPTACLES AND OTHER COMPUTERIZED EQUIPMENT AS SHOWN ON DRAWINGS.
- ALL ENCLOSURES AND NON-CURRENT CARRYING METAL PARTS ARE TO BE GROUNDING. CONDUIT SYSTEM IS TO BE ELECTRICALLY CONTINUOUS. ALL LOCKNUTS MUST CUT THROUGH ENAMELED OR PAINTED SURFACES ON CONDUIT SYSTEM. USE BONDING JUMPERS WITH APPROVED CLAMPS. ALL GROUND CLAMPS SHALL BE "PEN-N-UNION" OR EQUAL, SIMILAR TO "GFC" TYPE.

END OF SECTION

SECTION 260533 - RACEWAYS AND BOXES

PART 1 - GENERAL

1. SCOPE OF WORK

- REFER TO SECTION 260500.

- THIS CONTRACTOR SHALL FURNISH AND INSTALL ALL CONDUITS SERVING ALL EQUIPMENT, INCLUDING BUT NOT LIMITED TO LIGHTING, RECEPTACLES, HEATING, AIR CONDITIONAL, PLUMBING EQUIPMENT, TELEPHONE, DATA, AUDIO/VISUAL, SECURITY, AND ELECTRICAL EQUIPMENT.

PART 2 - PRODUCTS

1. RACEWAYS

- ALL CONDUITS SHALL BE GALVANIZED IMC, EMT, OR MC TYPE UNLESS OTHERWISE SPECIFIED IN SPECIFICATIONS OR ON DRAWINGS. ALL CONDUIT IS TO BE UL LABELED.
 - EMT CONDUIT SHALL BE STEEL, COMPRESSION OR SET SCREW TYPE.
 - CONDUIT UNDER SLAB ON GRADE SHALL BE RIGID STEEL, OR SCHEDULE 40 PVC WITH RIGID STEEL ELLS WHERE PERMITTED BY OWNER OR CODE.
- MINIMUM SIZE OF CONDUIT SHALL BE:
 - 1/2 INCH
 - ALL UNDER FLOOR CONDUIT SHALL BE OF MINIMUM 3/4 INCH SIZE.
- OUTLET BOXES
 - ALL OUTLET BOXES SHALL BE GALVANIZED PRESSED STEEL OF THE STANDARD KNOCKOUT TYPE, NO ROUND OUTLET BOXES SHALL BE PERMITTED UNLESS INDICATED AND FOR LIGHTING THAT REQUIRE SUCH CONFIGURATION. CONCEALED BOXES SHALL NOT BE LESS THAN 4 INCH SQUARE AND 1-1/2 INCH DEEP, WITH PLASTER RINGS.
 - ALL KNOCKOUT BOXES, UPON WHICH LIGHTING FIXTURES ARE TO BE INSTALLED, SHALL BE EQUIPMENT WITH 3/8 INCH FIXTURE STUDS.
- JUNCTION AND PULL BOXES
 - BOXES AND COVERS SHALL BE GALVANIZED STEEL OF CODE GAUGE AND SIZE.

PART 3 - EXECUTION

1. INSTALLATION

- SUPPORT ALL CONDUIT IN ACCORDANCE WITH THE NEC AND LOCAL CODES.
- GENERALLY, ALL CONDUIT SHALL BE CONCEALED EXCEPT FOR UNFINISHED AREAS, SUCH AS EQUIPMENT ROOMS. EXPOSED CONDUIT SHALL BE ALLOWED ONLY AS NOTED ON PLAN AND AS APPROVED BY TENANT'S PROJECT MANAGER. PARTING OF CONDUITS TO PROVIDE INFORMATION OR SPECIFICATIONS WILL BE BY GENERAL CONTRACTOR. FLEXIBLE CONDUIT OR MC TYPE CABLE SHALL BE USED FOR THE FOLLOWING APPLICATIONS:
 - FINAL CONNECTIONS WHERE RIGID CONDUIT IS NOT PRACTICAL.
 - IN WALLS FOR LIGHT SWITCHES AND 120 VOLT POWER RECEPTACLES AND HVAC CONTROL EQUIPMENT.
- THE USE OF ROMEX, BX, ETC. IS NOT PERMITTED.
- PROVIDE PULL-WIRE IN ALL EMPTY CONDUITS EXCEPT AS NOTED OTHERWISE ON DRAWINGS.
- HOME RUNS AND MAIN CONDUIT RUNS ARE TO BE HELD TIGHT TO STRUCTURE ABOVE OR AS REQUIRED TO ALLOW PROPER SERVICE ACCESS AND OTHER TRADES WORK. CONDUIT MUST BE TRAPEZED TO ALLOW 3 FEET MINIMUM CLEARANCE ABOVE CEILING.
- ALL CONDUITS MUST BE SIZED PER NEC AND LOCAL CODES.
- INSTALL BOXES RIGIDLY FROM BUILDING STRUCTURE AND SUPPORT INDEPENDENTLY OF THE CONDUIT SYSTEM. ALSO, PROVIDE SUITABLE BOX EXTENSIONS TO EXTEND BOXES TO FINISHED FACES OF FLOORS, CEILINGS, WALLS, ETC. ALL OUTLET BOXES TO BE PROVIDED WITH CADDY "QUICK-MOUNT BOX SUPPORT" TO MINIMIZE THE DEFLECTION THAT OCCURS WHEN PLUGGING/UNPLUGGING INTO THESE DEVICES.
- UNLESS OTHERWISE NOTED ON DRAWINGS OR OTHERWISE REQUIRED BY THE NATIONAL ELECTRIC CODE, HANDICAP CODES, OR LOCAL CODES, OUTLET HEIGHTS SHALL BE AS FOLLOWS:
 - SWITCH HEIGHT: 48 INCHES FROM FINISHED FLOOR TO CENTERLINE OF OUTLET.
 - CONVENIENCE OUTLETS: 18 INCHES FROM FINISHED FLOOR TO CENTERLINE OF OUTLET.
 - TELEPHONE OUTLETS SHALL BE LOCATED AS NOTED ON DRAWINGS.
- ARRANGE CIRCUITS TO AVOID THE USE OF JUNCTION BOXES IN INACCESSIBLE LOCATIONS. THE USE OF JUNCTION BOXES ABOVE DRYWALL CEILINGS SHOULD BE LIMITED TO LOCATIONS NEAR ACCESS FRAMES USED FOR DIFFUSERS AND RETURN AIR GRILLES OR ACCESS PANELS AS LOCATED ON PLANS.
- JUNCTION AND PULL BOXES MUST BE LABELED WITH CIRCUIT NUMBER, IDENTIFICATION AND SYSTEM TYPE ON COVER.
- JUNCTION AND PULL BOXES ABOVE CEILING AND BELOW RAISED FLOOR SHALL BE REFER TO ARCHITECTURAL SPECIFICATIONS FOR ACCESS PANEL SPECIFICATION IF NEEDED.

END OF SECTION

SECTION 260535 - IDENTIFICATION

PART 1 - GENERAL

1. SCOPE OF WORK

- REFER TO SECTION 260500.

PART 2 - PRODUCTS

1. EQUIPMENT LABELS

- MULTILAYER, MULTICOLOR PLASTIC LABELS WITH MECHANICAL ENGRAVING, FOR ATTACHMENT TO EQUIPMENT.
- CONDUCTORS
 - REFER TO SECTION 260519.
 - PROVIDE SELF-ADHESIVE VINYL LABELS THAT ARE PREPRINTED.

PART 3 - EXECUTION

1. LABELING

- EQUIPMENT (INCLUDING BUT NOT LIMITED TO PANELBOARDS, SWITCHBOARDS, DISTRIBUTION BOARDS, UPS'S, PDU'S, MOTORS, TRANSFORMERS, DISCONNECT SWITCHES) SHALL BE LABELED INDICATING EQUIPMENT NAME AND FEEDER SIZE.
- ALL BRANCH CIRCUIT WIRING DEVICES SHALL BE LABELED WITH CIRCUIT NUMBER.
- ALL JUNCTION BOXES ABOVE CEILING AND BELOW RAISED FLOOR SHALL BE LABELED WITH CIRCUIT NUMBER.

END OF SECTION

SECTION 260726 - WIRING DEVICES

PART 1 - GENERAL

1. SCOPE OF WORK

- REFER TO SECTION 260500.

PART 2 - PRODUCTS

1. SWITCHES AND RECEPTACLES

- FURNISH AND INSTALL SWITCHES AND RECEPTACLES, UNLESS NOTED OTHERWISE, AS NECESSARY FOR A COMPLETE INSTALLATION. COLOR OF DEVICES AND PLATES SHALL BE SELECTED BY THE ARCHITECT.
- THE DEVICES SHALL BE OF THE TYPES AND RATINGS LISTED, OR EQUALS BY PASS & SEYMOR, HUBBEL, OR LEVITON.
 - SINGLE POLE SWITCHES: 20AMP - 120-277V, LEVITON "DECORA" #6623-X
 - THREE WAY SWITCHES: 20AMP - 120/277V, LEVITON "DECORA" #6623-X
 - DUPLEX RECEPTACLES: 20AMP - 125V, LEVITON "DECORA" #16352-X
 - ISOLATED GROUND RECEPTACLES: 20AMP - 125V, LEVITON "DECORA" #16352-IG
 - GROUND FAULT CIRCUIT INTERRUPTING RECEPTACLES: 20AMP - 125V, LEVITON "DECORA" #8899
- ALL DEVICE COVER PLATES SHALL BE LEVITON "DECORA" NYLON STYLE.

PART 3 - EXECUTION

1. INSTALLATION

- INSTALL DEVICES PER THE MANUFACTURER'S RECOMMENDATIONS.
- LABEL ALL RECEPTACLES INDICATING PANELBOARD AND CIRUIT NUMBER. INSTALL LABEL ON THE FACE OF WALL PLATE.

END OF SECTION

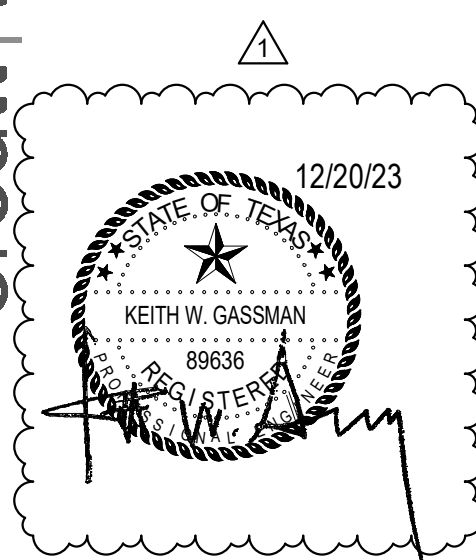
2929 n central ave

eleventh floor

phoenix, az 85012

602.257.1764 t

www.owp.com



© 2023 This (hard copy or electronic) drawing is an instrument of service and the property of orsalasobrien.com and shall remain their property. The design professional shall not be responsible for any alterations, modifications or additions made to this drawing by any party other than the design professional. Use of this drawing shall be limited to the original project for which it was prepared and the authorization herein is expressly limited to such use, in whole or in part, without the written consent of the design professional. Any reproduction or use of this drawing for any other project without the written consent of the design professional is prohibited. Any reproduction or use of this drawing for any other project without the written consent of the design professional is prohibited. Any reproduction or use of this drawing for any other project without the written consent of the design professional is prohibited. Any reproduction or use of this drawing for any other project without the written consent of the design professional is prohibited.

orcutt | winslow

2022-079

INDOOR GOLF FACILITY

700 GEORGE HOPPER RD., MIDLOTHIAN, TX 75065

FRANK SEALE MIDDLE SCHOOL

CLIENT CONTACT

MIDLOTHIAN ISD

100 WALTER STEPHENSON RD.

Midlothian, TX 76065

648-856-5000 T Jose Martinez

jose.martinez@midlothianisd.org

OWP PROJECT NO. DATE OF ISSUE

2022-079 12.1.2023

REVISIONS

DATE DESCRIPTION DATE

1 Addition 1 12/20/23

PROJECT TEAM DRAWN BY

Ed Studio MN

PROJECT PHASE

100% CD Package

SHEET CONTENTS

ELECTRICAL SHEET

SPECIFICATIONS

SHEET NO.

E-102

AGENCY NO.



salasobrien.com 972-812-1270

Irving

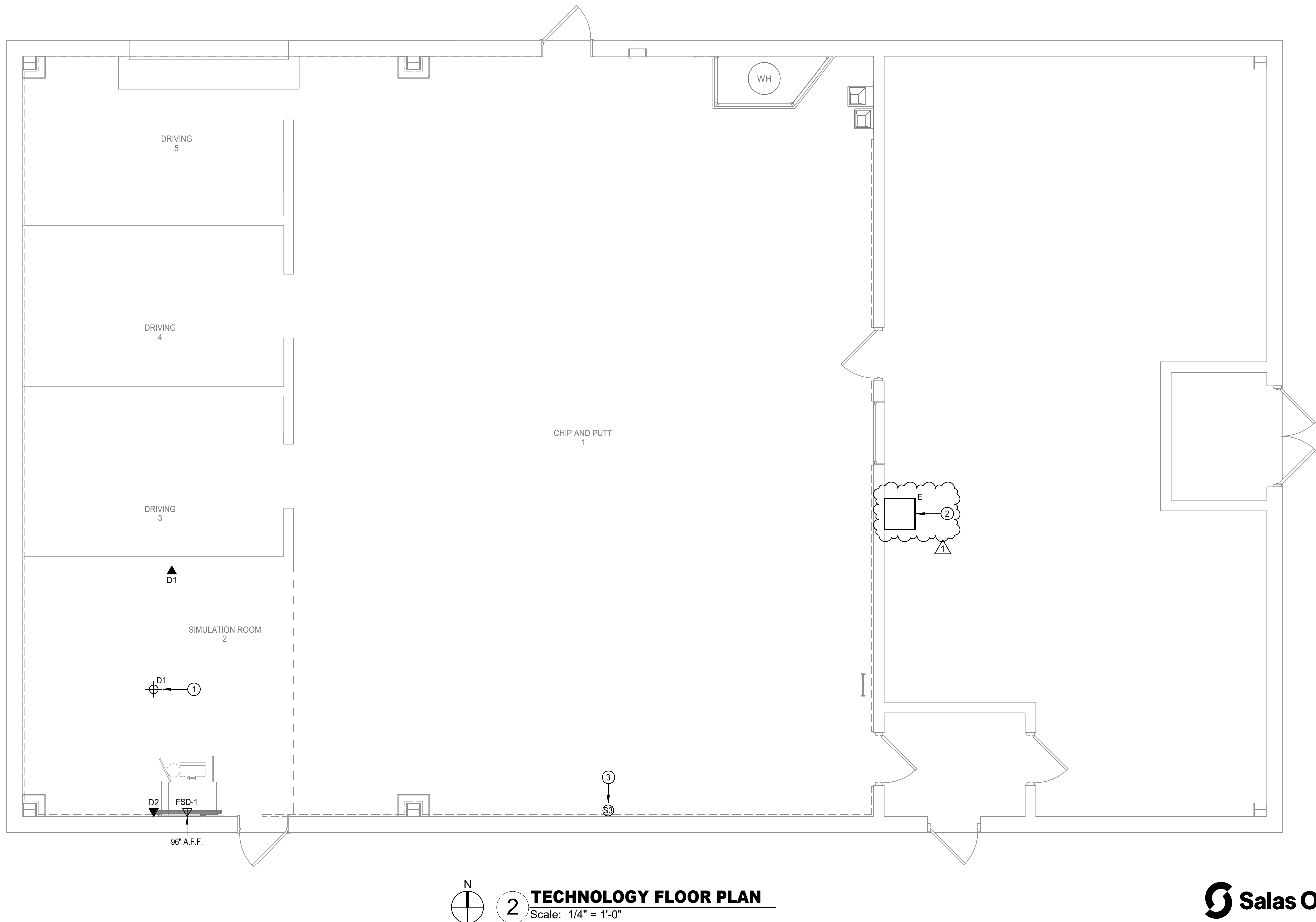
106 Decker Drive, Suite 200

Irving, TX 75062

Registration: F-4111

Project Number: 2023-05286

12/19/2023 11:58:18 AM orcutt | winslow / 2022-079 / INDOOR GOLF FACILITY - FRANK SEALE MIDDLE SCHOOL / SCHEMATIC DESIGN / T-200- TECHNOLOGY FLOOR PLAN / Author Autodesk Docs:Midlothian ISD - Indoor Golf Simulator Build-Out/2023-05286_MidlothianISD_Indoor_Golf_Facility_MEPT_L203.rvt



2 TECHNOLOGY FLOOR PLAN
Scale: 1/4" = 1'-0"



salasobrien.com 972-812-1270
Irving
106 Decker Drive, Suite 200
Irving, TX 75062
Registration: F-4111
Project Number: 2023-05286

TECHNOLOGY LEGEND				
SYMBOL	DESCRIPTION	ELEVATION	BACK BOX/RACEWAY	NOTES
	WALL MOUNTED NETWORK OUTLET DW: NUMBER OF DATA DROPS IN OUTLET AP: WIRELESS ACCESS POINT	+18" AFF, UNLESS OTHERWISE NOTED	4"x4"x2 1/8" BACK BOX WITH 1-G MUD RING, 1"C	
	COMMUNICATIONS OUTLET	FIELD COORDINATE	FIELD COORDINATE	
	WALL MOUNTED NETWORK OUTLET	+44" AFF	4"x4"x2 1/8" BACK BOX WITH 1-G MUD RING, 1"C	
	WALL MOUNTED BOX FOR FUTURE USE.	+18" AFF UNO	4"x4"x2 1/8" BACK BOX WITH 1-G MUD RING, 1"C	
	FLOOR MOUNTED NETWORK OUTLET	N/A	COORDINATE WITH ELECTRICAL CONTRACTOR	FINISHED HARDWARE PROVIDED BY DIV 27
	CEILING MOUNTED NETWORK OUTLET AP: WIRELESS ACCESS POINT DN: NETWORK OUTLET	ABOVE CEILING	CEILING BRACKET WITH BISCUIT BLOCK	
NOTES: 1. #G INDICATES BACK BOX SIZE. 2. #C INDICATES CONDUIT SIZE. 3. UNO: UNLESS NOTED OTHERWISE 4. CONDUIT STUB UP AND SLEEVES SHALL HAVE A SOLID UNCOIT PLASTIC PROTECTIVE BUSHING. 5. NO CONDUITS SHALL EXCEED FOR 40% MAXIMUM FILL RATIO. CONTRACTOR TO PROVIDE ADDITIONAL CONDUITS REQUIRED.				

AUDIO/VIDEO LEGEND				
SYMBOL	DESCRIPTION	ELEVATION	BACK BOX/RACEWAY	NOTES
	WALL MOUNTED PROJECTOR AV OUTPUT OUTLET	REFERENCE FLOOR PLANS	4 11/16"x4 11/16"x2-1/8" BACK BOX WITH DOUBLE GANG RING, TWO(2) 1.25"C	NOTE #5
	CEILING MOUNTED PROJECTOR AV OUTPUT OUTLET	CEILING MOUNTED	N/A	NOTE #5
	WALL MOUNTED AUDIO/VIDEO INPUT OUTLET	+18" AFF UNO	4 11/16"x4 11/16"x2-1/8" BACK BOX WITH DOUBLE GANG RING, TWO(2) 1.25"C	
	WALL MOUNTED FLAT SCREEN DISPLAY AUDIO/VIDEO OUTPUT OUTLET	REFERENCE FLOOR PLAN	4"x4"x2 1/8" BACK BOX WITH 1-G MUD RING, 1"C	NOTE #5
	WALL MOUNTED FLAT SCREEN DISPLAY AUDIO/VIDEO OUTPUT OUTLET ASSOCIATED WITH AV-1 INPUT OUTLET	REFERENCE FLOOR PLAN	4 11/16"x4 11/16"x2-1/8" BACK BOX WITH DOUBLE GANG RING, TWO(2) 1.25"C	NOTE #5
	INTERACTIVE VIDEO DISPLAY AUDIO/VIDEO OUTPUT OUTLET	REFERENCE FLOOR PLAN	4 11/16"x4 11/16"x2-1/8" BACK BOX WITH DOUBLE GANG RING, TWO(2) 1.25"C	NOTE #5
	AV CONTROL PANEL	+48" AFF TO TOP	4"x4"x2 1/8" BACK BOX WITH 1-G MUD RING, 1"C	
	LOCAL INSTRUCTIONAL SPACE PRESENTATION SPEAKER	CEILING	CONTRACTOR PROVIDED CEILING BOX	COORDINATE POWER WITH EC
	STREAMING CAMERA	CEILING UNO	N/A	NOTE #5
NOTES: 1. #G INDICATES BACK BOX SIZE. 2. #C INDICATES CONDUIT SIZE. 3. UNO: UNLESS NOTED OTHERWISE 4. THE SYSTEM INTEGRATOR SHALL COORDINATE ALL BOX AND CONDUIT SIZE REQUIREMENTS PRIOR TO ROUGH-IN BY THE PROJECTS ELECTRICAL CONTRACTOR. 5. PROVIDE AND INSTALL ONE (1) CATEGORY CABLE TO CONNECT DEVICE TO NETWORK				

INTERCOM LEGEND				
SYMBOL	DESCRIPTION	ELEVATION	BACK BOX/RACEWAY	NOTES
	WALL MOUNTED INTERIOR INTERCOM SPEAKER	REFERENCE FLOOR PLANS	CONTRACTOR PROVIDED	SEE NOTE 5
NOTES: 1. #G INDICATES BACK BOX SIZE. 2. #C INDICATES CONDUIT SIZE. 3. UNO: UNLESS NOTED OTHERWISE 4. THE SYSTEM INTEGRATOR SHALL COORDINATE ALL BOX AND CONDUIT SIZE REQUIREMENTS PRIOR TO ROUGH-IN BY THE PROJECTS ELECTRICAL CONTRACTOR. 5. PROVIDE AND INSTALL ONE (1) CATEGORY CABLE TO CONNECT DEVICE TO NETWORK				

RESPONSIBILITY MATRIX				
SCOPE ITEM		RESPONSIBILITY		
		OFOI	CFCI	OFCI
COMMUNICATIONS - DIVISION 27			✓	
CATEGORY 66A STRUCTURED CABLING SYSTEM			✓	
FLAT PANEL DISPLAYS			✓	
FLAT PANEL DISPLAY MOUNTS			✓	
PROJECTOR		✓		
PROJECTOR MOUNTS			✓	
BUILDING INTERCOMPA, BELL, AND CLOCK SYSTEM			✓	
OFOI - OWNER FURNISHED AND OWNER INSTALLED CFCI - CONTRACTOR FURNISHED AND CONTRACTOR INSTALLED OFCI - OWNER FURNISHED AND CONTRACTOR INSTALLED				
RESPONSIBILITY MATRIX NOTES: 1. NONE IN PROJECT. 2. OWNER CONFIGURED, CONTRACTOR INSTALLED AND PATCHED 3. OWNER CONFIGURED, CONTRACTOR INSTALLED AND PATCHED CONTRACTOR TO PROVIDE AND INSTALL WALL MOUNT BRACKETS AND HIGH IMPACT ENCLOSURES. 4. BY DIVISION 26. 5. REFERENCE DIVISION 8 FOR DOOR HARDWARE. 6. BY DIVISION 11. 7. BY DIVISION 27. 8. UNLESS SPECIFIED OTHERWISE				

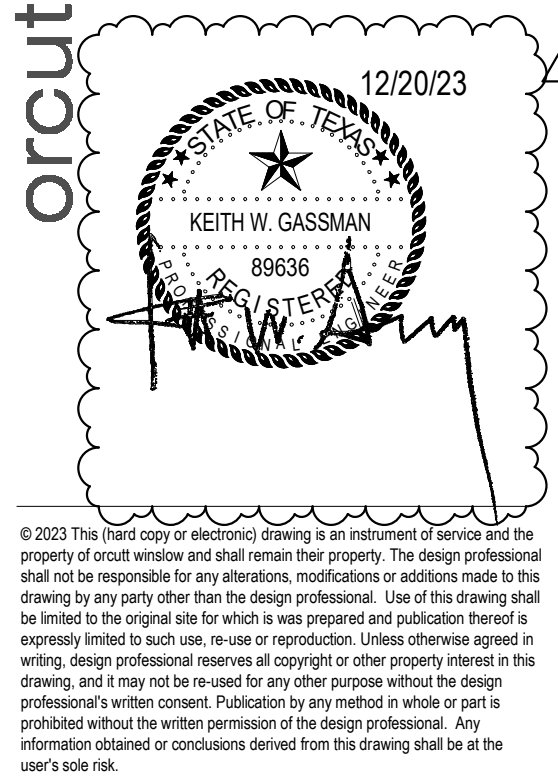
SUBSCRIPTS AND ABBREVIATIONS	
TEXT	DESCRIPTION
'WP'	DEVICE SHALL BE WEATHER PROOF AND RATED FOR EXTERIOR CONDITIONS
•	FIELD COORDINATE ELEVATION.
AFF	ABOVE FINISHED FLOOR
'UC'	DEVICE IS TO BE MOUNTED ON THE UNDERSIDE OF THE ELEVATED CANOPY.

SUBSCRIPTS LEGEND - EXISTING DEVICES	
TEXT	DESCRIPTION
'E'	EXISTING TO REMAIN.
'D'	DEVICE IS EXISTING AND IS TO BE REMOVED. CONTRACTOR TO REMOVE THE DEVICE AND RETURN TO OWNER.
'RR'	REMOVE EXISTING DEVICE AND RELOCATE TO A LOCATION INDICATED ON THE DRAWINGS.

NOTES TO CONTRACTOR	
1. EVERY SYMBOL SHOWN ON LEGEND MAY NOT APPEAR ON DRAWINGS.	
2. SYSTEM INSTALLERS SHALL COORDINATE LOCATIONS AND CONNECTIONS WITH THE PROJECTS ELECTRICAL CONTRACTOR.	
3. CONTRACTOR TO PROVIDE PROPERLY GROUNDED LIGHTING PROTECTION ON ALL CABLING ENTERING AND EXITING THE BUILDING.	

TECHNOLOGY KEYED NOTES	
1	DATA TO BE FOR PROJECTOR MOUNTED TO TRACKMAN CAGE SYSTEM.
2	APPROXIMATE LOCATION OF EXISTING WALL MOUNTED TELECOMMUNICATIONS CABINET TO BE REMOVED AND REPLACED WITH NEW HOMERUN NEW FOC WALL MOUNTED SPEAKER PROGRAMMED TO CONNECT TO EXISTING INTERCOM SYSTEM.
3	EXISTING INTERCOM SPEAKER. CONTRACTOR TO REMOVE EXISTING SPEAKER AND REPLACE WITH NEW HOMERUN NEW FOC WALL MOUNTED SPEAKER PROGRAMMED TO CONNECT TO EXISTING INTERCOM SYSTEM.

2929 n central ave
eleventh floor
phoenix, az 85012
602.257.1764 t
www.owp.com



© 2023 The Print copy or electronic drawing is an instrument of service and the property of orcutt | winslow and shall remain their property. The design professional shall not be responsible for any alterations, modifications or additions made to this drawing by any party other than the design professional. Use of this drawing shall be limited to the original use for which it was prepared and no reproduction thereof is expressly limited to such use, re-use or reproduction. Unless otherwise agreed in writing, design professional shall not be responsible for other property interests in this drawing, and it may not be re-used for any other purpose without the design professional's written consent. Publication in any medium in whole or in part is prohibited without the written permission of the design professional. Any information obtained or conclusions derived from this drawing shall be at the user's sole risk.

FRANK SEALE MIDDLE SCHOOL
INDOOR GOLF FACILITY
700 GEORGE HOPPER RD, MIDLOTHIAN, TX 75065

CLIENT CONTACT
MIDLOTHIAN ISD
100 WALTER STEPHENSON RD.
Midlothian, TX 76065

648-856-5000 T Jose Martinez
jose.martinez@midlothianisd.org

OWP PROJECT NO. 2022-079
DATE OF ISSUE 12.20.2023

REVISIONS		
DELTA	DESCRIPTION	DATE
1	Addendum 1	12/20/23

PROJECT TEAM Ed Studio
DRAWN BY Author

PROJECT PHASE 100% CD Package

SHEET CONTENTS
TECHNOLOGY FLOOR PLAN

SHEET NO.
T-200
AGENCY NO.

MIDLOTHIAN ISD

INSPIRING EXCELLENCE

CSP 2324-04 GOLF PRACTICE FACILITY PROJECT

12/7/23	Golf Practice Facility Project	Meeting Date:	Dec. 7, 2023 10 am
Pre-Bid	MISD	Place/Room:	MISD Admin/FSMS

Name	Title	Company	Phone	E-Mail
Ronnie Pace	owner	30-06 LLC	817 692 7001	dfwSales@30-06Leasing.com
Chase Laughlin	Service Manager	BTX	469 733 6623	chase.laughlin@BTXCONSTRUCTIONGROUP.COM
JDVia	Vice President	BTX	817 313-8108	JDVia@BTXConstructionGroup.com
Shaun Ellis	Project Manager	Morales CS	469-479-8061	Shaun.Ellis@Morales-CS.com
XAVIER MADISON	BUSINESS DEVELOPMENT	POST L GROUP	346-774-7191	XMADISON@POSTLGROUP.COM
Hunter Hinton	Estimator Reeder Construction	Reeder Construction	817.439.2022	bidmaster@reedergeneral.com
Doug Pate	P.M.	The Noyco	469 383 6933	Dpate@TheNoyco.com
Justin Jones	Manager	J SQUARE	469-235-5239	
Brent Allen	owner	Champion	972.679.2410	Brent@champion-const.com
Brayden Allen	Project manager	Champion	972-765-9153	Brayden@champion-const.com
Aaron Guthrie	"	"	972 742 0540	aguthrie@champion-const.com
Brian Harlan	Architect	Orcutt Winston	817-235-8364	harlan.b@owp.com