

23g Mi Kids Back on Track Grant; Gaylord Community Schools; Stakeholder Input

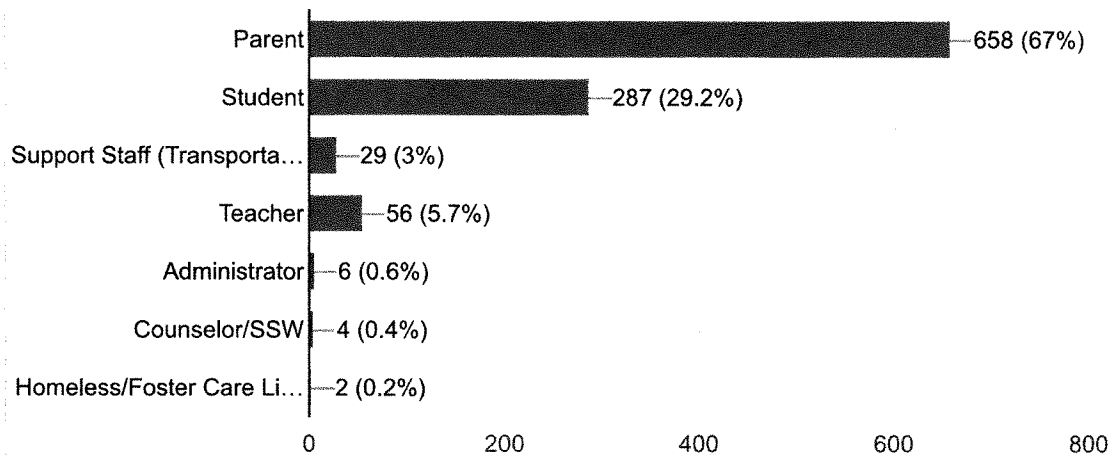
982 responses

Publish analytics

Please Identify yourself by selecting all that apply

 Copy

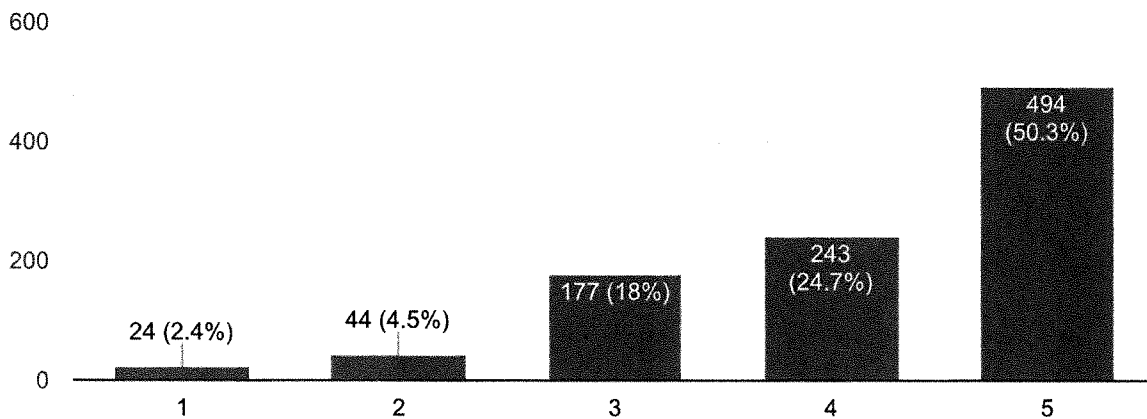
982 responses



Allocating funds towards Career Pathways

 Copy

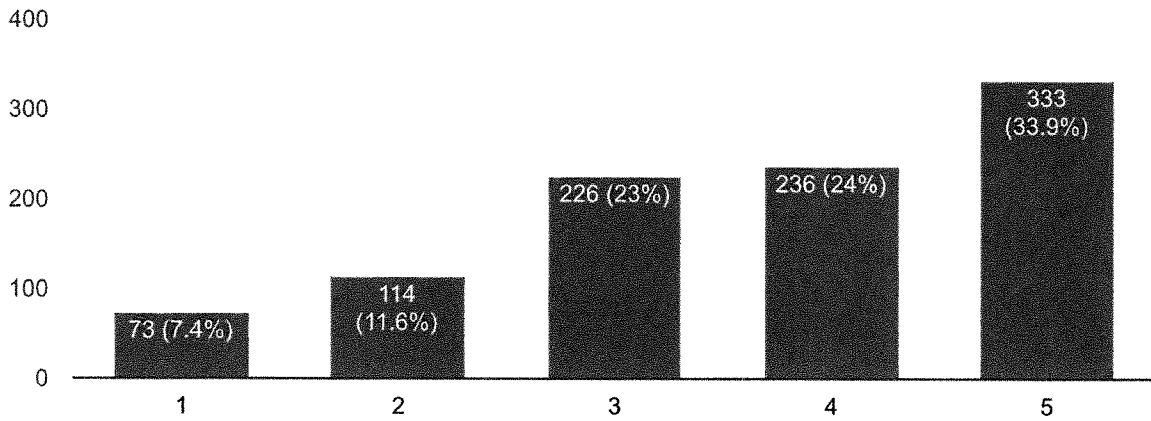
982 responses



Allocating funds for **Expanded Learning Time**



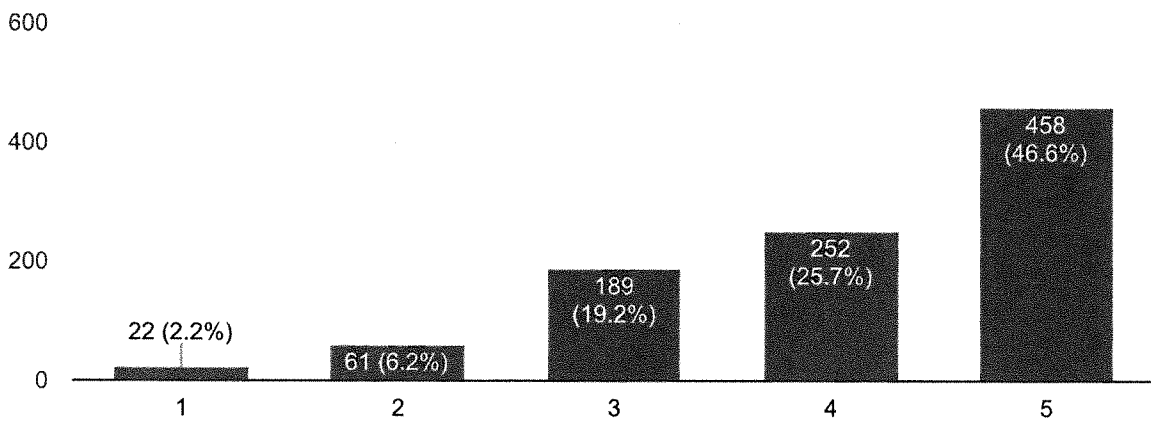
982 responses



Allocating funds towards **Intensive, Individualized Support**



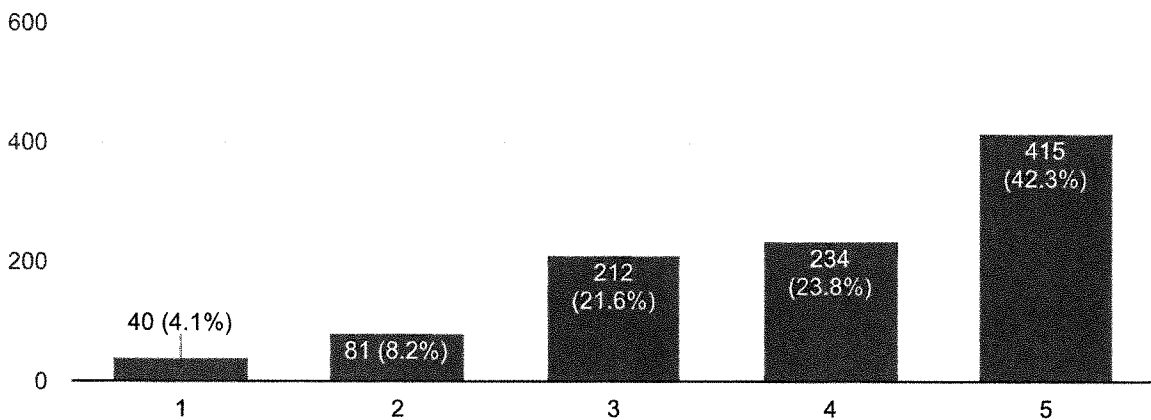
982 responses



Allocating funds towards a **Personalized Learning Environment**



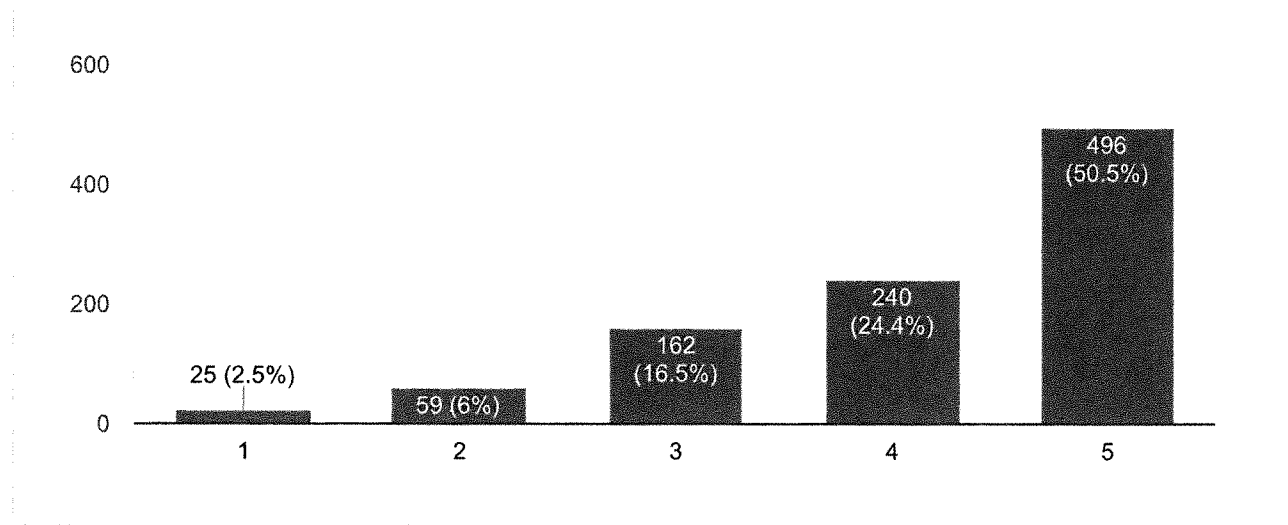
982 responses



Allocating funds for Tutoring



982 responses



This content is neither created nor endorsed by Google. [Report Abuse](#) - [Terms of Service](#) - [Privacy Policy](#)

Google Forms



