

Section 31aa Student Mental Health Guidance/School Safety and Security Grant Gaylord Community Schools; Stakeholder Input

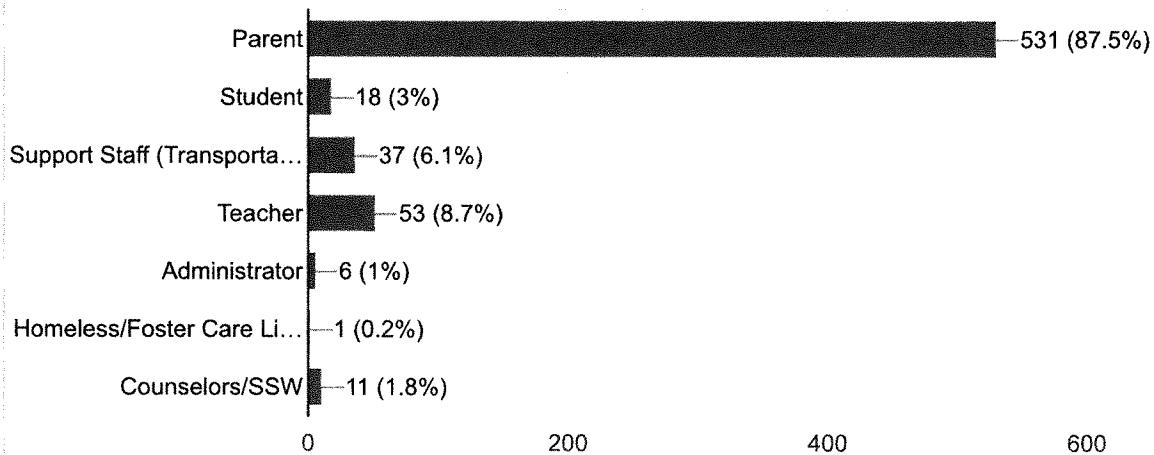
607 responses

Publish analytics

Please identify yourself by selecting all that apply

 Copy

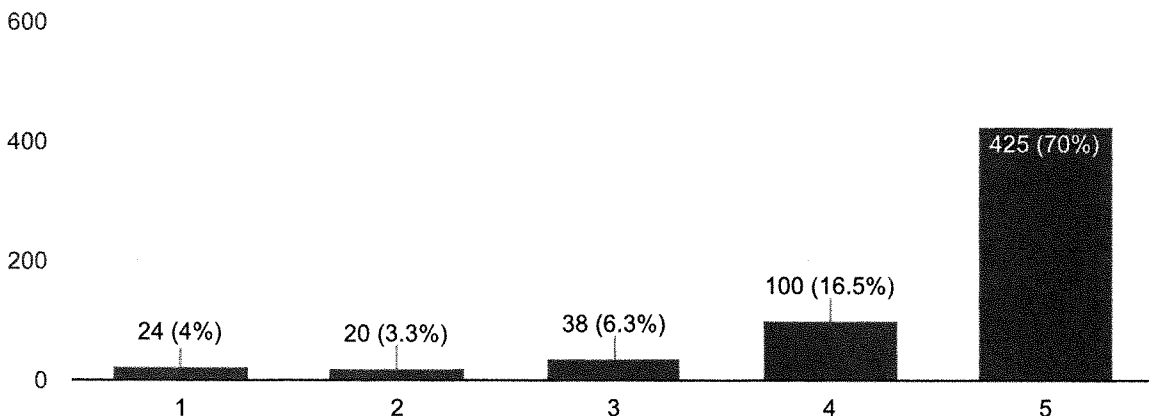
607 responses



Hiring or contracting for support staff for student mental health needs, including, but not limited to, school psychologists, social workers, counselors, and school nurses

 Copy

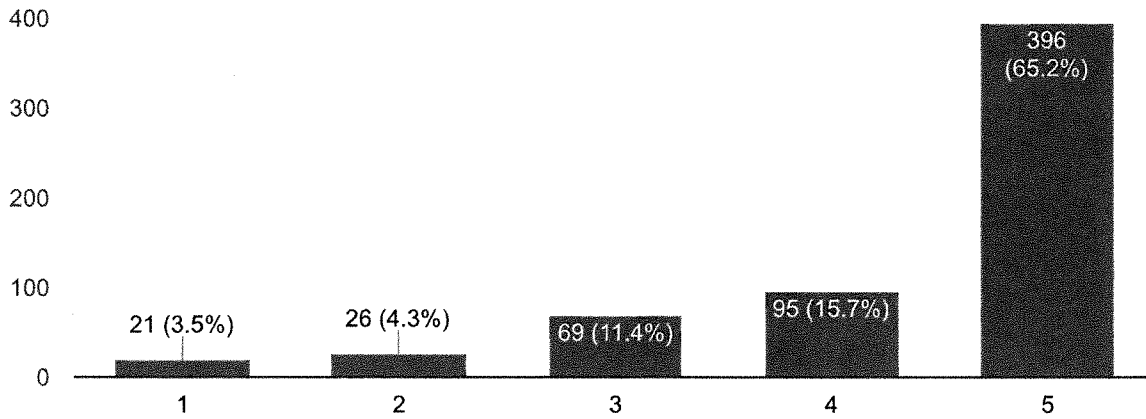
607 responses



Providing school-based mental health personnel access to consultation with behavioral health clinicians to respond to complex student mental health needs.



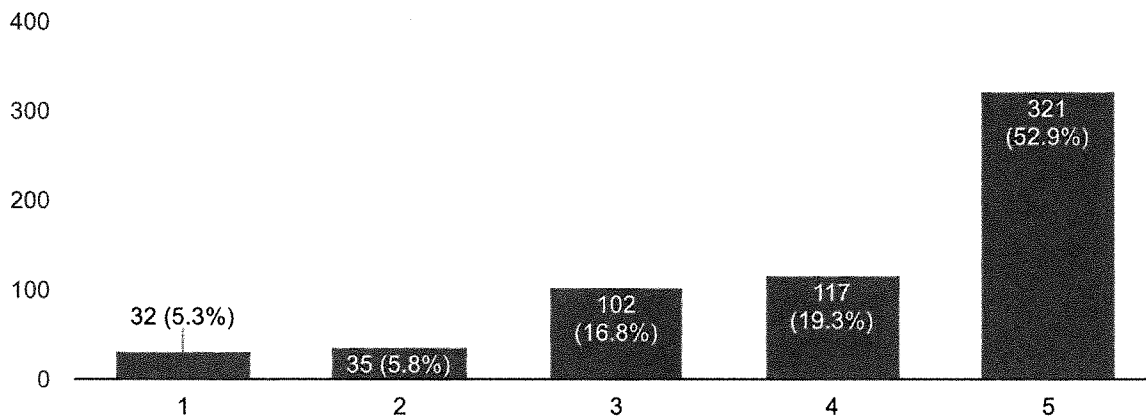
607 responses



Purchasing and Implementing mental health screening tools



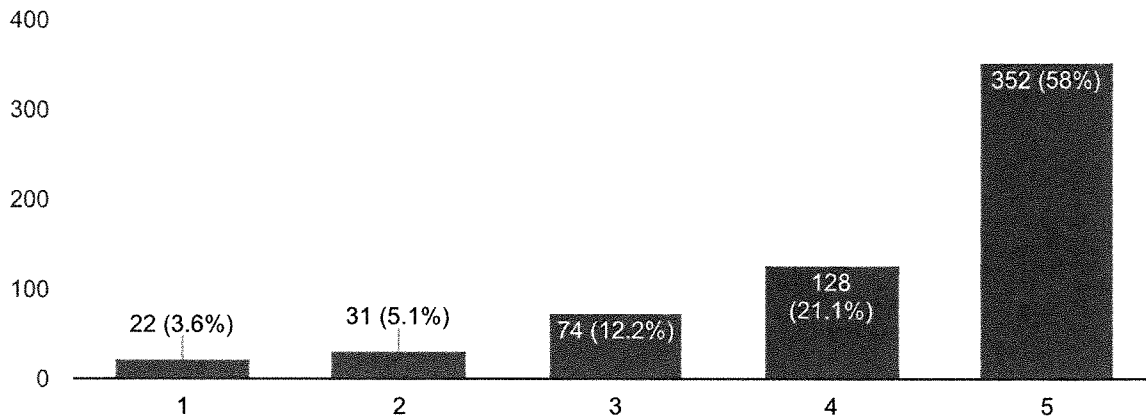
607 responses



Any other mental health services or products necessary to improve or maintain the mental health of students and staff



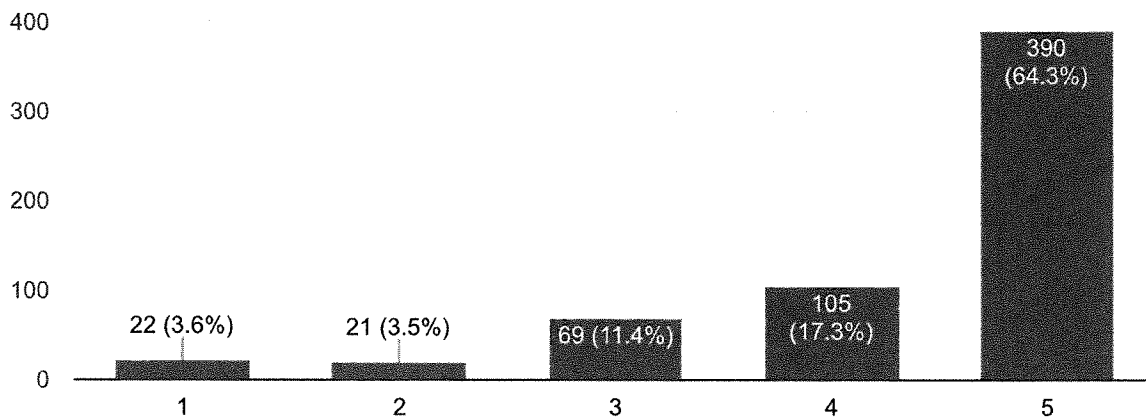
607 responses



Coordination with local law enforcement



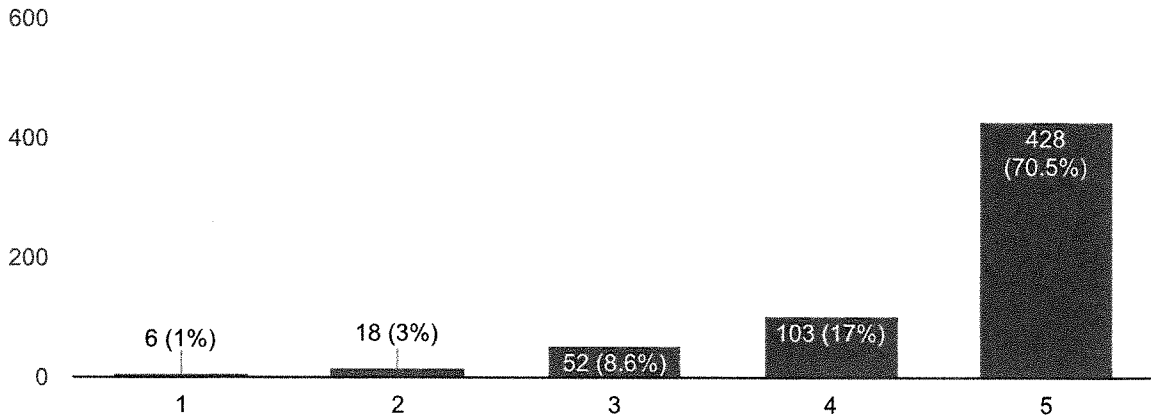
607 responses



Training for school staff on threat assessment

 Copy

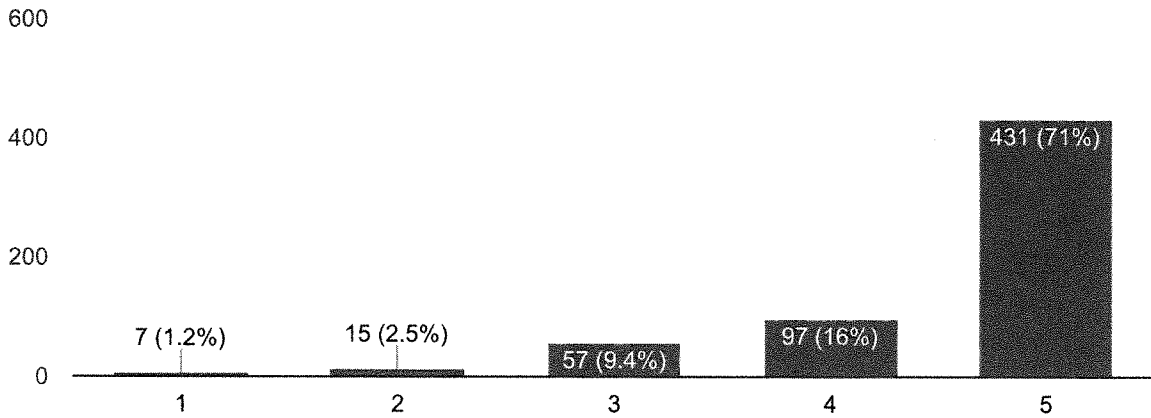
607 responses



Training for schools staff and students on threat response

 Copy

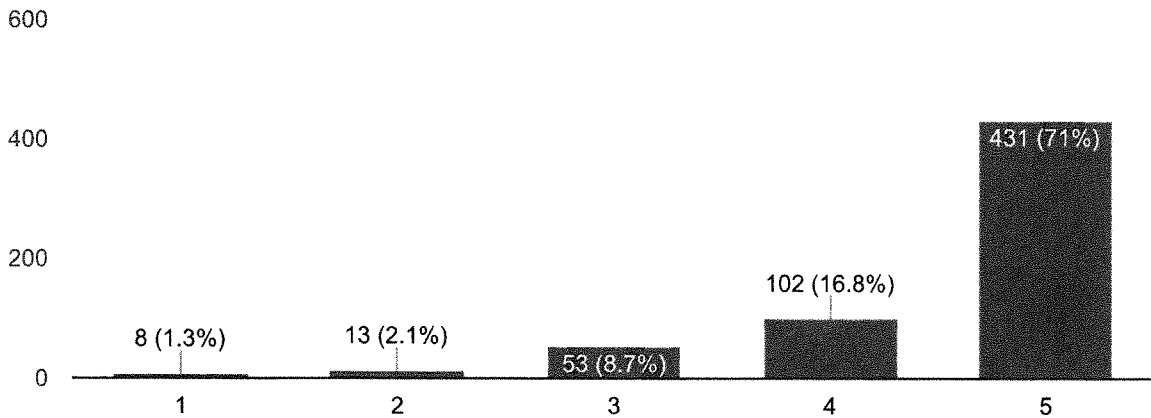
607 responses



Training for school staff on crisis communication

 Copy

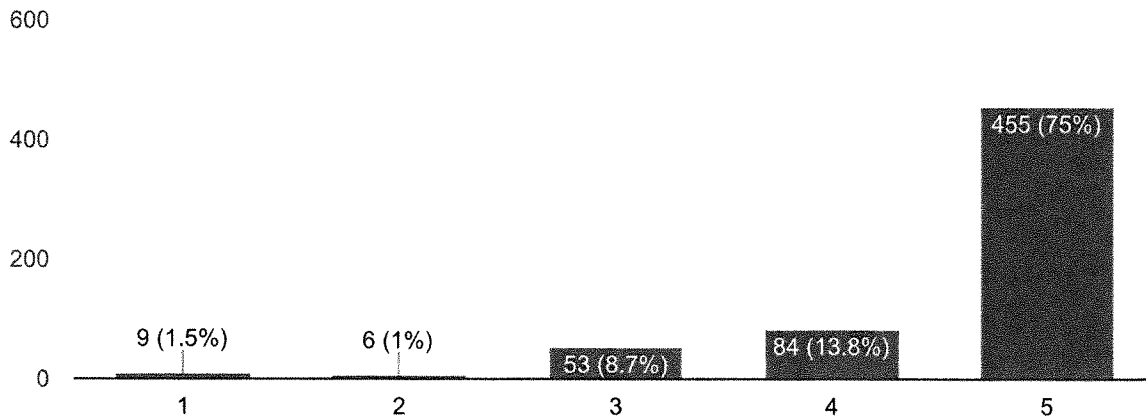
607 responses



Safety Infrastructure

 Copy

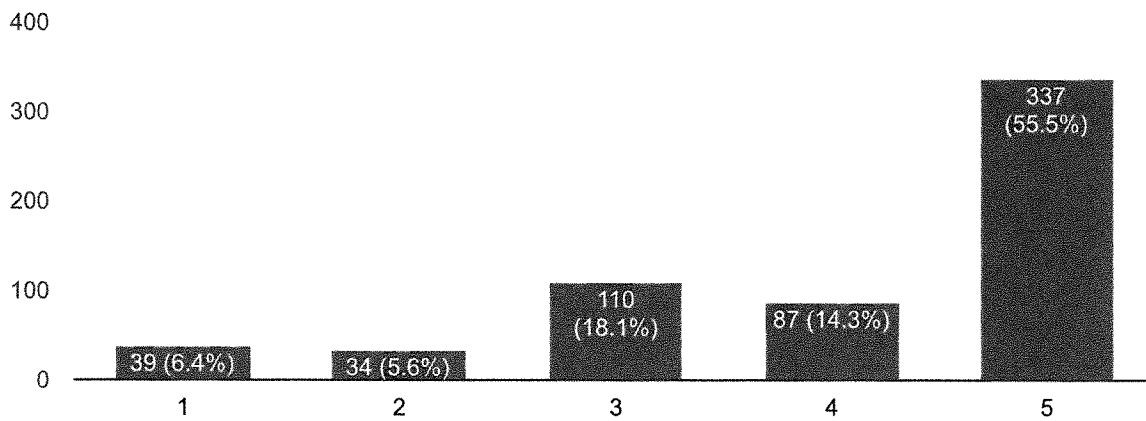
607 responses



Age appropriate training for students and families on responsible gun ownership

 Copy

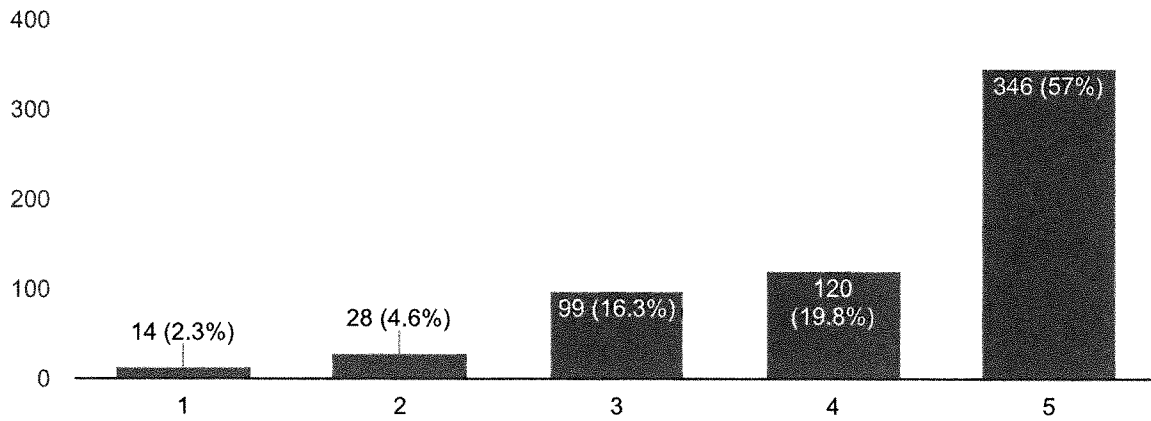
607 responses



Student Safety Management System

 Copy

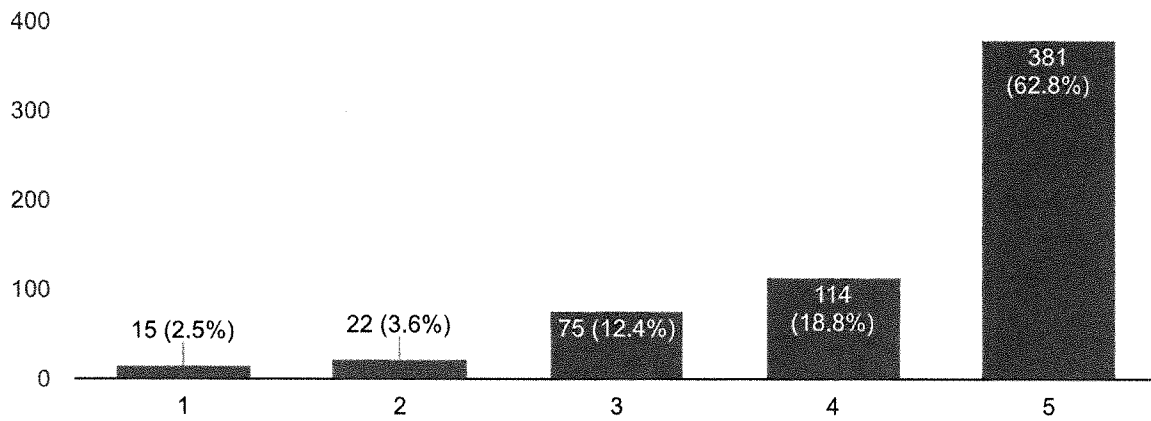
607 responses



School Resource Officers

 Copy

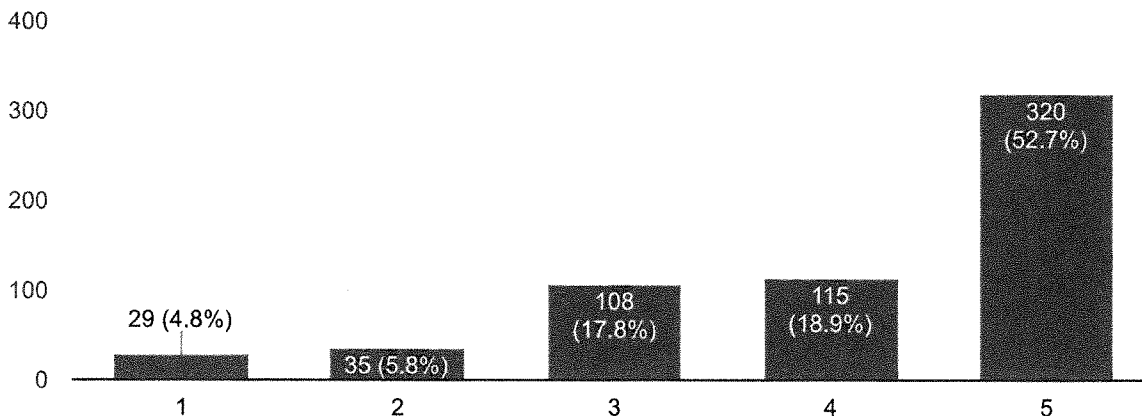
607 responses



A secure platform, administered by the Department of Michigan State Police for partners to house all school safety-related items



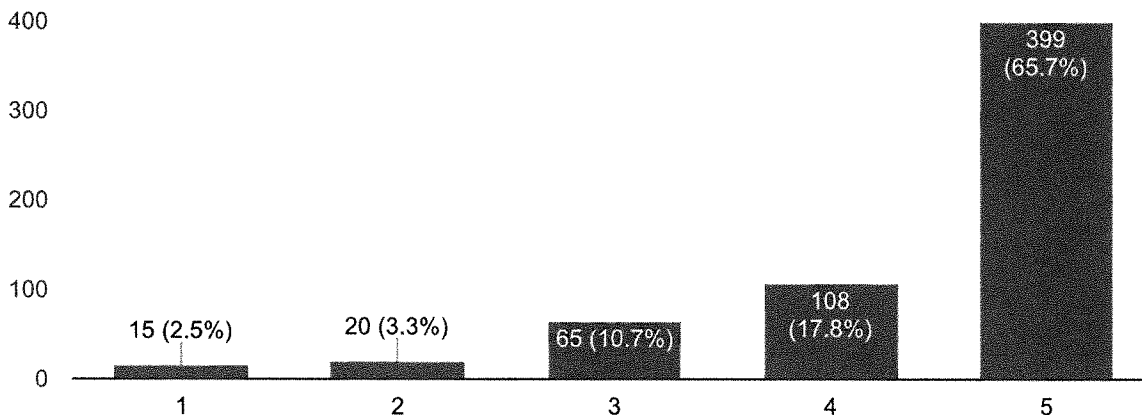
607 responses



Any other school safety service or product necessary to improve or maintain security in buildings



607 responses



This content is neither created nor endorsed by Google. [Report Abuse](#) - [Terms of Service](#) - [Privacy Policy](#)

Google Forms



