



Monterey County Community Resource Guide

About Us

The National Center for Youth Law envisions a future where each and every young person in foster care, experiencing homelessness, or under the jurisdiction of probation, graduates from high school with a wide array of possibilities for their future. We join in solidarity with a growing movement across the country to ensure equitable opportunities and outcomes for ALL young people.

To achieve this shared vision, it is imperative that leaders from multiple public systems – child welfare, education, mental health, probation, judicial agencies, and the rich landscape of community organizations – band together with persistence and collaboration to build the conditions under which:

- Children and youth are engaged in learning, empowered to create futures they are excited about, and have champions in their corner for the long run.
- Parents, family members, mentors, and other trusted adults are fully invested in their role as education champions and are consistently and meaningfully supported.
- System and community leaders collaborate deeply on a shared vision that lifts up the voices of young people and helps realize equitable opportunities and outcomes for all students.
- Professionals working directly with young people in support of their education are appreciated, supported, and connected with one another.

Using this Resource Guide

In support of this vision, we have compiled a Community Resource Guide of available programming and services for young people in Monterey County. This guide can be utilized by community members or service providers to connect young people, especially those experiencing homelessness, with programs, services, and other community resources. Resources are categorized by type and may appear more than once throughout the Community Resource Guide, in each of the relevant service categories.

Recognizing the fluidity in available programming and services, this Community Resource Guide will exist electronically and can be continually updated for ongoing accuracy.



Organization & Program Descriptions

Organization & Program Descriptions

ORGANIZATION	PROGRAM	DESCRIPTION
Boys and Girls Clubs of Monterey County	Seaside Clubhouse	Daily homework help; Health and Fitness; Visual and Performing Arts; Character and Leadership Development. College & Career Readiness which has daily tutoring, weekly college prep workshops, college trips and field trips.
California Conservation Corps		Provides young men and women ages 18 – 25 years old a year of paid service to the State of California.
California Rural Legal Assistance (CRLA)	Salinas Unit	Provides legal assistance in the areas of: Education (special education, language access, truancy, bullying and harassment, discipline – suspensions/expulsions/transfers, etc.); Public benefits (CalFresh, General Assistance (GA), Temporary Assistance for Needy Families (TANF), CalWORKs, In-Home Supportive Services (IHSS), Unemployment Insurance Benefits (UIB), State Disability Insurance (SDI); Employment (wage theft, harassment, reasonable accommodation, lack of rest/meal periods, language restrictions, discrimination based on race, religion, age, disability, etc.), and Housing (habitability, notices to terminate tenancy, eviction, discrimination, reasonable accommodation, etc.).
	Indigenous Program	Provides legal advocacy and educational outreach and supports leadership development in California's rural indigenous Mexican and Central American communities.
	LGBT Program	Represents LGBTQ clients in a variety of types of legal cases, including immigration, employment discrimination and education matters, as well as legal name and gender change petitions.
	#NOMAS: Farmworker Sexual Violence Assistance	Increase the availability and quality of legal assistance provided to victims of sexual violence living within migrant and farmworker communities; establish safety plans for farmworkers who experience sexual violence, particularly for those living in labor camps; and increase the knowledge base of attorneys, advocates and law enforcement on the challenges and issues facing farmworkers who experience sexual violence.
Catholic Charities Diocese of Monterey	Hope in Home	Provides client needs assessment; short-term goal setting and individualized support; one time direct assistance towards a portion of: 1st month of rent, past due rent, past due electricity, gas, or water; and referrals and assistance navigating other local services.
	Pathway to Stability	A client-centered, long-term program that provides comprehensive services for clients determined to make changes in their lives towards a stable future. Participants in this program embark on a 9 month journey of individual & group support, financial coaching, and a myriad of resources to support their dreams of a better future. Seaside location offers family supportive services (eviction prevention, filling out CalWORKs applications, etc.).
	Mental Health Counseling Program	Experienced, licensed clinicians, fluent in English and Spanish, who supervise and mentor master and post-master level interns. Interns work directly with clients who have various mental health diagnoses, ages, family constellations and cultural backgrounds.
	CalFresh and Nutrition Education	California's name for federal Supplemental Nutrition Assistance Program. Provides additional resources to put healthy and nutritious food on the table. Issues monthly electronic benefits (EBT) that can be used to buy food at many markets and food stores, including farmers market. Also offers a Nutrition Education Program to raise awareness about the principle of choices as a way to a healthy lifestyle and to promote well-being, nutrition, movement, family, and culture.
	Immigration and Citizenship Program	In-depth case analysis, representation in citizenship interviews, professional case counseling, Citizenship Classes, and more. Also assists with Deferred Action Childhood Arrivals (DACA) applications. Seaside location offers immigration services (paperwork, consultations, renewals on DACA, etc., but not attorneys. Some services are free and some are not).
Center for Employment Training (CET)		Job placement assistance and job training programs that teach marketable skills to people of all educational levels and backgrounds, especially those most in need.

ORGANIZATION	PROGRAM	DESCRIPTION
Central Coast Center for Independent Living	Information and Referral	Cross disability peer support, information and referral, individual and systems advocacy, independent living skills training, housing assistance, personal assistance services, youth transition services, and assistive technology services.
	Rapid Re-Housing (RRH) and Homeless Prevention (HP) services	Intensive Case Management to assess housing and service needs, financial support when funding is available, and Youth Transition Services.
Central Coast Energy Services	Financial assistance with electricity, plumbing and other utilities	People living in Monterey County.
Central Coast Pediatric Dental Group		Accepts Medi-Cal; dental care for those with Denti-Cal and CHDP/ Gateway Insurance.
Clinica de Salud del Valle de Salinas (CSVS)	Seaside Clinic	Accepts Medi-Cal.
	Alvin Dental	Office includes 9 operatories and provides general dentistry, cosmetic dentistry, oral surgery, endodontics, pediatric dentistry and preventative dentistry.
	CSVS Mobile clinic	Serves homeless communities in the Monterey Peninsula, Salinas' Chinatown District, and the Pajaro River District in Northern Salinas County. This location provides dental and medical care.
Community Homeless Solutions	Casa de Paz Program	6 months rental assistance to 14 program participants who live in ten 1-bedroom units, and two 2-bedroom units in Monterey County. Participants receive housing placement assistance, supportive services, and referrals to the NIDO Clinic (Natividad Immunology Division Outpatient) to receive primary health care. Services include HIV testing/counseling, laboratory, case management, health education, treatment adherence education, mental health counseling, and referral services.
	12th Street Day Center	The Center provides folks experiencing homelessness with showers, laundry, computers/internet, microwave, cell phone charging, counseling, and case management. The Center is currently open to women experiencing homelessness on Tuesdays and Wednesdays, 1:30 to 3:30 pm.
	The Hamilton House	Provides 16 emergency shelter beds for single women and women with children who are victims of domestic violence, or who are experiencing homelessness. The shelter is open 24 hours a day, 7 days a week, with stays of 30-90 days.
Natividad Emergency Shelter	Natividad Emergency Shelter	12-room emergency shelter providing 32 beds to domestic violence victims in the Salinas Valley. Natividad will also accommodate women experiencing homelessness and their children who are non-domestic violence victims if space is available. Shelter stays are generally 30-90 days. The shelter is open 24 hours a day, 7 days a week.
	Seasonal Warming Shelter	Provides overnight housing to 60 women, men, and families at a facility located in downtown Salinas. The shelter operates during the winter months of November – April, with staff providing case management services. Area churches and organizations provide evening meals and support.
	Central Coast Respite Center	Provides shelter and support to adults experiencing homelessness and in need of short term recuperative care following hospitalization. Staff provides case management services to help participants acquire stable housing and access eligible services and benefits. Staff also provides meals and transportation to doctor appointments. Participants are referred to the Center by three local hospitals: Community Hospital of the Monterey Peninsula, Natividad Medical Center, and Salinas Valley Memorial Hospital.

Organization & Program Descriptions

ORGANIZATION	PROGRAM	DESCRIPTION
	Homeward Bound	25 units, each with two-bedrooms and a total capacity of 75 beds. Houses single women with children who are experiencing homelessness or victims of domestic violence, and provides supportive services for up to 18 months.
	Intact Families/ Lexington Court	18 month program for dual-parent families and single fathers with children experiencing homelessness. Intact Families is housed in a 6-unit complex, each with two-bedrooms and a total capacity of 18 beds.
	Men in Transition	Serves single men experiencing homelessness at a complex with 8 three-bedroom units (with a 24 bed capacity).
	Women in Transition	Serves single women experiencing homelessness, including victims of domestic violence, at a facility with 6 two-bedroom units at a confidential location.
	Genesis House	Comprehensive assessment, case management, and individualized treatment planning. The co-ed program offers 28 beds for stays of 3 to 6 months. The perinatal program offers 8 beds for stays of 6 to 10 months. Program has a cost.
	Elm House	Traditional Sober Living Environments for single women in early recovery from substance abuse. Length of stay is limited to 18 months, but may be extended to 24 months, with appropriate justification. Program has a cost.
	Mobile Outreach Service Team (M. O. S. T.)	Mobile outreach program that consists of a team of skilled workers who drive to areas where folks experiencing homelessness congregate. The team distributes emergency food, clothing, and supplies. The team also provides resource information and referrals, and conducts intakes to begin the process for accessing services and support.
Community Hospital of the Monterey Peninsula (CHOMP)		Wide range of healthcare services at 15 locations, including the main hospital, outpatient facilities, satellite laboratories, a mental health clinic, a short-term skilled nursing facility, Hospice of the Central Coast, and business offices. Accepts Medi-Cal.
Community Human Services (CHS)	Safe Place	Individual, group, and family counseling to help resolve crises and reunite youth with their families. Weekly drop-in dinner at the Monterey Youth Center provides a hot meal and recreational activities for youth. 24-hour access to temporary shelter. The shelter can typically house up to 12 people (6 beds for females and 6 beds for males).
	Safe Passages	18 to 24 month stay in a group housing facility with a shared kitchen, bathroom, laundry and common living area. Ongoing assessment, life planning, and case management. Immediate needs for food, clothing and transportation are met until residents can provide for themselves. Has beds for six people.
	24-Hour Runaway and Homeless Youth Helpline	(831) 241-0914
	Outpatient Treatment Centers	Comprehensive assessment, medical evaluation, individualized treatment planning, individual, group and family counseling, trauma and crisis counseling, education on addiction, recovery and communicable illness, introduction to 12-step programs, relapse prevention and coping skills, drug testing, information and referral to other community resources, discharge planning and continuing care support groups.
	Off Main Clinic	Provides medication, counseling, and medical consultation to adults experiencing opioid addiction or severe alcoholism. Accepts Medi-Cal.
	Drug and Alcohol Intervention Services for Youth (D.A.I.S.Y.)	Intervention and education services for substance abusing youth. Individual, group and family counseling. Substance abuse and gang education for parents. Services are provided free of charge in English and Spanish. Also offer family support groups.

ORGANIZATION	PROGRAM	DESCRIPTION
	Outpatient Counseling	Affordable mental health counseling. Comprehensive mental health and self sufficiency assessment. Walk-in and crisis appointments available. Information and referral as necessary. Sliding scale pay. For Medi-Cal, must be assessed by County Behavioral Health Department first (call 831-755-5505).
	Counseling and Therapy Services (C.A.T.S.)	A supportive space in which individuals and their families can talk confidentially with LGBT-friendly staff and LGBT-identified professionals. Counseling requires some payment, but accepts Medi-Cal. Seaside # is (831) 394-4622. Call to enroll. Drop-in groups are free.
	Domestic Violence/Anger Management	52-week Domestic Violence Intervention curriculum. Alternative, brief treatment for anger issues (minimum 12-week commitment required). English and Spanish. Program has a cost.
	Parent Education Program	Support and educate parents of at-risk children and families in crisis. The goal is to provide parents with new skills and tools so they can parent their children with love, commitment and safety; 8 weeks of classes in English and Spanish provided by a trained instructor. Two programs: positive parenting program and strengthening families program (tier 2 vs tier 3).
	Pathways to Safety	An early intervention and community-based, family-centered program that works from the belief that parents love their children, and want to ensure their safety, health, and happiness.
	County of Monterey Health Department Clinic Services	Seaside Family Health Center
Monterey County Clinic at Marina		Offers family practice, obstetrics, Comprehensive Perinatal Services Program (CPSP), STD screening/treatment, walk-in immunizations, and TB screening/treatment. Hours of operation: Monday – Friday 8:00am – 5:00pm.
Bienestar - Marina		Offers adult care and family primary care. Walk-in adult and child visits: Tuesday 8:00am – 5:00pm.
CSUMB	Student Disability Resources	Support services and accommodations.
	Personal Growth & Counseling Center	Crisis help, counseling (individual and group), mental health screenings. Offers walk-in hours Monday-Thursday.
	TRiO Student Support Services	Advising and peer mentoring.
	Guardian Scholars	Financial and academic support.
	Imagine College	Summer Scholar Institute (SSI) gives students a taste of college life and allows them to study a particular area of interest in order to gain college credit while they're still in high school.
	Educational Talent Search (ETS)	Academic advisement, career exploration, financial aid/scholarship and college admissions assistance, college tours, cultural events, and other educational enrichment opportunities.
Door to Hope	The Door	14 beds, and is home to Women's Residential Program for alcohol and drug addiction. Offers 3 to 6 months of treatment that costs no more – and often less – than the average 28-day program. Services include: addiction counselors; therapists; family counselors; experts in parenting, stress, anger and mood management; trauma and grief counseling; and psychological counselors, including those qualified to help clients with mental health problems.
	Santa Lucia	Services include: Cognitive Behavioral Therapy, Seeking Safety for trauma-exposed clients, Seven Challenges, Motivational Enhancement Therapy, customized academic program, individual therapy, and family and group counseling.

Organization & Program Descriptions

ORGANIZATION	PROGRAM	DESCRIPTION
	MC Start	Services include: developmental screening; specialty-focused medical assessment and care; psychological assessment; Dyadic Therapy; Attachment Therapy; Theraplay®; Circle of Security; Occupational Therapy; Sensory Integration Therapy; Parent Child Interactive Therapy (PCIT); Parents as Teachers; family support services; education; and case management services.
	Integrated Co-Occurring Treatment (ICT)	ICT services begin and remain based in the home. Additional services are offered at the ICT offices as well, including: Cognitive Behavioral Therapy; Motivational Enhancement Therapy; Matrix Model™; peer support group activities; Seven Challenges; trauma-informed care; and individual, group and family therapy.
	Outpatient Program	Services include: Motivational Enhancement Therapy, Twelve-Step Facilitated Therapy, Seeking Safety® for Trauma-Exposed Clients, Matrix Model®, life skills, family therapy, relapse prevention, medical treatment, behavioral therapy, and psychological treatment.
	Nueva Esperanza	Services include: Motivational Enhancement Therapy, Twelve-Step Facilitated Therapy, Seeking Safety for Trauma-exposed Clients, Matrix Model, Parents as Teachers, and Cognitive Behavioral Therapy.
Dorothy's Place	House of Peace	Transitional living program that promotes and provides safety, stability, and wellbeing. Provides structure and supportive services including emotional support, linkage to community resources, educational direction, financial and literacy programs, as well as assistance with benefit applications, employment readiness, and job searches.
	Chinatown Health Services Center	On-site availability of medical services from volunteer doctors and nurses from Natividad Medical Center and from the local community.
	Dorothy's Kitchen	Full-service, commercial kitchen serving delicious meals from fresh ingredients. 8:30 a.m. to 9:30 a.m. for breakfast and 1:00 p.m. to 2:00 p.m. for lunch every day.
	Drop-in Center	Trained staff provide trauma-informed care to get assistance into transitional and permanent housing, to sign up for benefits and assistance programs, to obtain information on substance abuse counseling, and to learn about physical and mental wellness. 120 people daily average. Drop-in Center is open 9:00 a.m. - 1:00 p.m. on Monday, Thursday, Friday, and Saturday, and 9:00 a.m. - 2:00 p.m. on Wednesdays.
	St. Clare's Corner	Provides household goods, clothing, and food. Open during the high unemployment months for farm workers from October through April. Open every Monday from 10:00 a.m. to noon from October to April.
	Emergency Food Bags	Free food bags for anyone in need; order between 11:00 am - 12:00 pm at the drop-in center.
Family Service Agency of the Central Coast	Suicide Prevention Service	24-hour suicide crisis line.
First United Methodist Church	Serves breakfast 6:30 am-8 am, lunch 11:30 am-12:30 pm, Sunday through Friday. Also has clothes closet, art room, 12-step groups, computer lab and access to other supportive services. Closed Saturdays.	Food services for all ages.

ORGANIZATION	PROGRAM	DESCRIPTION
Food Bank of Monterey County	Emergency Food Assistance Program	Takes place monthly at twenty-six sites throughout the county where volunteers distribute bags containing essentials such as tuna, fruit, vegetables, rice, beans, bread and other donated foods. These sites are carefully selected and conveniently located as to reach as many people in need as possible.
	The Family Market Program	An outdoor produce-only distribution for those who are most in need of fresh food and the least able to afford it.
	Kids N.O.W. (Nutrition On Weekends)	Children in need are provided a bag of food to take home with them over weekends and school breaks.
	Breast Cancer Patient Food Assistance Program	Delivers food selected to address the unique nutritional needs of patients in treatment or recovery and include other healthful items, especially fresh produce, that their limited budgets cannot accommodate.
Gathering for Women		Women's Day Center, offering breakfast, lunch, clothing, and support; 8:00 AM - 4:00 PM, Monday through Friday.
Girls, Inc. of the Central Coast	ECHO Leadership Program	Leadership/ mentoring program. A year-long program designed to encourage these girls to pursue post-secondary education and plan for future careers.
Harmony at Home	Teen Success, Inc. Program for Young Mothers	The Teen Success, Inc. Program is an 18 month program for pregnant or parenting young women. Program includes: Educational navigation and support to help young moms graduate high school. Parenting education to develop skills needed to nurture their child's growth and school readiness. Coaching with a mentor to support goal setting, address challenges young moms may face, and connect to resources. A weekly Peer Learning Group where young moms come together and focus on parenting education, health and wellness, and self-empowerment.
Hartnell College	Mi CASA (Center for Achievement and Student Advancement)	Academic support.
	Extended Opportunity Programs and Services (EOPS)	Support services, academic and otherwise.
	TRIO/Student Support Services	Academic counseling and tutoring.
	Homeless Liaison	Academic counseling and support.
	Guardian Scholars Program	Financial and academic support.
	High School Equivalency (HSE) Program	Free assistance for obtaining HSE.
Housing Resource Center (HRC)	Rental Assistance	HRC case managers work closely with clients to assess their level of need; and at the same time, work directly with landlords to provide a solution that will provide new or retain existing housing in a timely manner. In some cases, assistance with utilities may be available as well. Case managers also assess clients and refer them to other agencies for services and additional aid they may be eligible for, such as food, employment, and child care. Two programs: housing support and family stabilization.
	First Time Home Buyer Education	Online course offered in English and Spanish. Teaches how to choose a realtor; understanding each step—and the accompanying forms and documents—in the loan and purchase process; how to set aside funds for home maintenance, taxes, insurance and emergency purposes.

Organization & Program Descriptions

ORGANIZATION	PROGRAM	DESCRIPTION	
Interfaith Homeless Emergency Lodging Program (I-HELP)	I-HELP men	Short-term lodging and evening meals, tailored advice and support. Men are picked up and brought to the host site every evening, and then dropped off at a central location the next morning. Pick-up is 7 days a week at 4:15pm.	
	I-HELP women	Short-term lodging and evening meals, tailored advice and support. Women are picked up and brought to the host site every evening, and then dropped off at a central location the next morning. Pick-up is 7 days a week at 4:30pm.	
Interim, Inc.	Community Housing	Permanent, affordable supportive housing in a variety of locations for over 150 residents. Housing options include 6 and 8-bedroom cooperative group residences, studios and 1 and 2-bedroom apartments. Supportive services include case management and mental health services.	
	Shelter Cove	Transitional housing for 32 people. Provides case management and mental health services, as well as a variety of peer support groups and social activities.	
	Sandy Shores	Permanent, affordable housing for 28 people. Case management and mental health services, as well as a variety of peer support groups and social activities.	
	Manzanita Crisis Residential Programs	Short-term crisis residential treatment. The residential program model is a community-based alternative to inpatient psychiatric care. The maximum stay is 30 days. Interim has 28 beds at two facilities, one in Salinas and one in Monterey.	
	Bridge House	14-bed transitional residential treatment program.	
	MCHOME	Outreach, housing and intensive, integrated services. MCHOME's goal is to move individuals experiencing homelessness with psychiatric disabilities off the street and into housing, permanently.	
	Supported Education and Employment Services	Provides career, vocational, and educational counseling, job development and coaching. Improves educational opportunities by helping clients access classes and training programs at local colleges.	
	OMNI Resource Center	Peer-led programs promoting wellness and recovery, as well as recreational and social opportunities. Wellness programs are free with no referral necessary. Teen program meets on Wednesdays for TAY program, but young people also welcome to come to meetings.	
	Wellness and Recovery Academy	Day rehabilitation program to support clients in their recovery from mental health and alcohol/drug recovery.	
	Dual Recovery Services	Group and individual counseling, peer support and social, educational and recreational activities, designed to help people attain and maintain a clean and sober life-style.	
	Outreach and Aftercare Services	Group and individual counseling, peer support and social, educational and recreational activities, designed to help people attain and maintain a clean and sober life style.	
	CHOICES	CHOICES	Short-term (3 weeks up to 90 days) day treatment intensive program. Provides group, individual therapy, and peer support where participants can regain and maintain their mental health. The goal is to prevent future mental health crises requiring inpatient hospital or residential crisis care.
		Success Over Stigma	Community advocacy and educational outreach program designed to combat the three most prevalent forms of stigma: community perception, internal stigma and external stigma. Outreach and education program, not direct service provider.
Workforce Education and Training		Specialized training and services about working in the mental health system.	

ORGANIZATION	PROGRAM	DESCRIPTION	
Loaves, Fishes & Computers		Provides low-cost or no-cost computer systems, technology assistance and computer repair to low-income families, seniors, veterans and people with disabilities.	
Marina Teen Center		A fun, safe, healthy environment and affordable teen program where all teens can participate and learn. Offers a variety of recreational opportunities for the teens of Marina and surrounding communities.	
Monterey County Al-Anon	Whole Person Care	Comprehensive case management. Registered Nurse case managers assess WPC enrollees for health, housing, and social services needs, and then provide warm hand-offs to primary care clinics, mental health/substance abuse therapists, social services, housing supports and placement, and employment training.	
	Al-Anon	Support group.	
	Alateen	Support group.	
Monterey County Behavioral Health (MCBH)	Treatment Hotline at Natividad Hospital	Helps find a safe solution for a crisis.	
	Family Support Groups	Groups offer support through education and peer sharing to increase participant knowledge about mental health. Family members get an opportunity to discuss their unique experiences and learn from peers about coping skills, community resources and, most of all that they are not alone in their journey. Every 2nd and 4th Wednesday from 5:15pm to 6:30pm.	
	Adult Services	Mental health services, medication support, case management, brokerage and groups for those individuals who have a chronic persistent mental illness and meet the targeted population, which includes people with schizophrenia, bipolar disorder, and atypical psychosis. Uninsured and Medi-Cal accepted. Can call or walk in to clinic.	
	Young Adult Services	Young Adult Services collaborates with other services providers, the youth and their family to provide services and supports to help the youth move forward in their life domains: Education, Employment, Living Situation, Personal/Community Engagement. Based on the philosophy that services should be: Youth-guided, Strength-based, Individualized, Community-based and Culturally competent.	
	Children's Services	Inpatient and outpatient services; medical evaluation; case management; day care services; home partners; parent partnership and support. Referrals are made through the Department of Social Services and Probation Department, local school district's Special Education Departments, and local hospitals. Community referrals are possible but are screened to ensure compliance with the target population. Accepts Medi-Cal or fees are based on ability to pay. Uninsured and Medi-Cal accepted. Can call or walk in to clinic.	
	Alcohol & Drug Services	Prevention; intervention; drug court; drug treatment; narcotic replacement therapy. Walk-in hours.	
	Drop-in Center	Trained staff provide trauma-informed care to help individuals get assistance into transitional and permanent housing, to sign up for benefits and assistance programs, to obtain information on substance abuse counseling, and to learn about physical and mental wellness. 9:00 a.m. - 1:00 p.m. on Monday, Thursday, Friday, and Saturday. 9:00 a.m. - 2:00 p.m. on Wednesdays.	
	Monterey County Rape Crisis Center (MCRCC)	24-Hour Crisis Hotline	Free, confidential crisis lines that are available 24 hours a day, 7 days a week in Spanish and English. Sexual Assault Counselors provide crisis intervention services and referrals to survivors, family, friends, and community members. Also offer: Survivors of Human Trafficking; Campus Advocate at CSUMB (Title IX reports, peer-to-peer counseling).
		Advocacy Services	Connects survivors with the Victim Witness Assistance Program, campus academic support, and any other community resources the survivor may need.

Organization & Program Descriptions

ORGANIZATION	PROGRAM	DESCRIPTION
	Child Abuse Treatment Program	Counseling services for youth who have suffered trauma (sexual, physical, emotional, neglect) and exposure to domestic and community violence.
	Individual and Group Therapy	One-on-one confidential counseling, and group offers a safe and confidential environment to rebuild self-esteem and regain a sense of control.
	My Life Club	Fosters an environment that empowers young women to embrace their strengths, make safe and healthy decisions in their lives, and create positive change in their communities.
	MyStrength Club	The MyStrength Campaign was developed by Men Can Stop Rape, a nonprofit organization in Washington DC. The campaign revolves around the theme "My Strength is Not for Hurting" and encourages young men to take action to end sexual violence and to build healthy relationships.
Monterey Peninsula College	Access Resource Center	Support services and accommodations.
	TRiO Student Support Services	Academic counseling and tutoring.
	Extended Opportunity Programs and Services (EOPS)	Student support.
	Upward Bound MPC	Tutoring and college prep.
Monterey Peninsula Unified School District	Marina High School	Academic Programs/Supports: AVID, Counseling, Athletics: Football, Volleyball, Cross Country, Softball, Swim, Track & Field, Baseball, Basketball, Soccer. Clubs: Acts of Random Kindness, Art Club, ASB, AVID Club, Bowling Club, Debate Club, Drama Club, Environmental Impact, Gaming Club, Kazoo Club, Key Club, Link Crew, Math Club, Music Club, National Coalition Building Institute, National Honor Society, Year Book.
Monterey Peninsula Unified School District	Seaside High School	Academic Programs: Engineering Technology Magnet Pathway, Health, Safety & Public Service Magnet Pathway, Hospitality & Business Magnet Pathway, Multi-Media Communications Magnet Pathway. Athletics: Cross Country, Field Hockey, Swimming, Volleyball, Cheerleading, Football, Cross Country, Swimming, Basketball, Soccer, Wrestling, Softball, Track & Field, Baseball, Golf. Clubs: Art Club, Asian Culture Club, AVID, Auto Tech/Robotics, Black Student Union, Cyber Patriots, Dance Club, Drama, E-Sports, EAOP Ambassadors, Environmental Club, FCA, Game Club/Robotics, Gay Straight Alliance Club, Go Green Club, International Club, JROTC, Key Club, Latino Club, Link Crew, S.T.E.P.S., National Honor Society, NCBI, Ocean Defenders, Pacific Islander Club, Running Club, Science & Health Club, Spartan Swim Club, Street Workout, Surf Club, Textiles, Website Development.
Monterey Peninsula Unified School District	Monterey High School	Academic Programs: AVID, International Baccalaureate, Sports Professions and Recreation Careers Academy (SPARC), Art, Media, and Performance Academy (AMP), Monterey Academy of Oceanographic Science (MAOS), Business Entrepreneurship Technology Academy (BETA). Academic Support: After-school math tutoring, Saturday Academy. Activities: Robotics, Leadership, Music, Drama. Athletic Programs: Cross Country, Field Hockey, Water Polo, Tennis, Volleyball, Cheerleading, Football, Basketball, Soccer, Wrestling, Lacrosse, Softball, Swimming/Diving, Track & Field, Baseball, Golf. Career Programs: Navy Junior Reserve Officer Training Corps. Clubs: AFS, Badminton, Baking Bad, Black Culture Club, Digital Arts Club, Drama, Garden, Golf Club, GSA, Humanitarian Club, Key Club, Kindness Club, Latino Club, Model United Nations, Monterey High Dancers, Motorsports, Multicultural Club, Mural Club, Musical Theater Appreciation, Outdoors, Pearl Status, Student-to-Student.

ORGANIZATION	PROGRAM	DESCRIPTION
Monterey Peninsula Unified School District	Central Coast High School	Academic Programs: Culinary Arts Academy, Public Safety Academy, Digital Media and Design Academy, Health Careers Academy. Academic Support: Zero Period Tutoring, Designated Intervention and Mentoring Space (Room 21), Project Based Learning Credit Recovery. Activities: School Newspaper, Co-ed Basketball team.
NAMI Monterey County	NAMI Peer-to-Peer	Free, 10-session course designed for any adult experiencing a mental health challenge. The course is designed to encourage growth, healing, and recovery.
	NAMI Family-to-Family	Free, 12 session educational course for family, caregivers, friends, and significant others of adults living with mental health challenges. This course helps family members learn more about their loved one's mental illness and ways to support them. This course is also offered in Spanish.
	NAMI Homefront	NAMI Homefront is a free, 6-session, online educational program for families, caregivers and friends of military service members and vets with mental health conditions. This course is designed to address the unique needs of family, caregivers and friends of those who have served or are currently serving our country. The program is taught by trained family members of service members/veterans living with mental health conditions. Online classes meet weekly in a virtual classroom, so participants experience the same level of interaction and learning as traditional in-person classes. To register for this online course please click on the link and register with NAMI National.
	NAMI Family Support Group	Free, confidential and safe groups of families helping other families who live with mental health challenges. In NAMI Family Support Groups, families join a caring group of individuals helping one another by utilizing their collective lived experiences and learned wisdom. Family members can achieve a renewed sense of hope for their loved one living with mental health challenges.
	Connection Recovery Support Group	Free, peer-led group for adults living with a mental health challenge. Each group is led by trained individuals who have lived experience in mental health.
	NAMI Provider Education	Free, 4-hour training developed for the staff of public and private agencies who work with individuals affected by mental health challenges. This course emphasizes a comprehensive understanding of how mental illnesses affect individuals. The class is taught by a team of family members, individuals living with mental health challenges, and one mental health care provider; together these unique perspectives provide professionals a better understanding of what it's like to live with a mental illness. Professionals also gain a better understanding of how to better support families and clients within their own organization.
	One Starfish Safe Parking program	Overnight Safe Parking Program for adults experiencing homelessness and living in their vehicles.
OneStop Career Centers	Salinas One Stop	Employment Services include vocational assessment, employment readiness and job appraisal, education and job training services, referrals to community services, and ongoing employment goals coaching. Supportive Services include child care, transportation, work-related education and training expenses such as uniforms, books, licenses and fees.
	One Stop Career Center of Monterey County/Community Benefits Branch	Assists families toward a path of work and self-sufficiency. The purpose of the cash assistance program is to provide temporary financial assistance to economically disadvantaged families with dependent children. Benefits are based on household size, family income and resources.

Organization & Program Descriptions

ORGANIZATION	PROGRAM	DESCRIPTION
Papillion Center for Loss and Transition	Good Grief for Kids & Teens	Good Grief for Kids & Teens is an age-based psycho-education program designed to let kids know they are not alone, to give their grief a voice through play, art and storytelling and to support the adults who care for them. Each session is professionally led by therapists with expertise and experience in childhood grief.
	Educational Workshops	Workshops yearly. Check website for current workshops. Program has a cost.
Rancho Cielo	Transitional Housing	22 residential beds for Rancho Cielo students or graduates unsafe in their own neighborhood, or experiencing homelessness. Case management works with each resident to identify barriers to success and connect him/her with services for which s/he is eligible.
	Silver Star Youth Employment Program	Offers intensive educational instruction to students between the ages of 15.5 and 18. All students are screened prior to acceptance and must have a desire to make positive changes in their lives. Most students are on probation when referred to Rancho Cielo but recommendations may also come from the juvenile court, schools or parents. Graduates receive a high school diploma or GED.
	Rancho Cielo Youth Corps	On-the-job training program serving young people, ages 18–24, to be prepared for regular full time employment. Crews learn through their involvement in a variety of construction projects that teach everything from work ethics to complex construction skills. They are employed by Rancho Cielo during their tenure in the Youth Corps.
	Drummond Culinary Academy	Provides at-risk youth with an opportunity to gain classroom training, work experience and transferrable skills that help them become employable in the culinary and hospitality industry. The 10-month program, split between the kitchen and the high school academic classroom, results in a culinary certificate and a high school diploma. Students will complete a 200 hour externship program working with local restaurants to gain additional employment experience. The program offers job readiness training, as well as placement and referral services for graduates.
	Construction Academy/Scholars	Students are engaged in the classroom, vocational activities and workshops through Rancho Cielo's partnership with Hartnell College's East Campus, John Muir Charter School, and The Offset Project specializing in Solar Panel installation. The program will serve up to 30 students at a time, with open enrollment.
Restorative Justice Partners, Inc.	Restorative Justice in the Schools	Provides students, school staff, and parents supplemental processes to build community, confront challenges and handle conflict in a way that focuses on accountability and maintaining relationships. Services include: mediation, circles, conflict education and community building & problem solving circles.
	Victim Offender Reconciliation Program	A voluntary mediated process in which victims of crime have the opportunity to meet the offender in a safe and structured setting to explore how to make things as right as possible.
	Merchant Accountability Panel	A process that focuses directly on the pervasive crime of juvenile shoplifting.
	Victim Impact Program	Geared toward helping offenders become more aware of the long-range impact crime has on victims, their families, and the community.
	Circles	Circle of Hope is for community members who have loved ones incarcerated, Reintegration Circles are a process to assist people released from prison in preparing a successful reentry, Community Building and Problem Solving Circles view community members as the experts in their own problems and solutions.

ORGANIZATION	PROGRAM	DESCRIPTION
RotaCare Monterey		Wednesdays, 5:00 pm to 9:00 pm. Volunteer medical staff provides non-invasive, acute care to uninsured residents of the Monterey Peninsula (18 years and older). Patients are seen on a first come, first served basis or as a scheduled follow-up appointment. Check-in starts at 2:30pm to get a voucher to be seen that evening. Patient registration begins at 4:00 pm. \$10 donation per visit is requested. Patients should arrive at 2:30pm to get tickets for registration. If patients cannot be seen that day, staff will give other options for treatment.
Salvation Army	Transitional Housing Programs	Basic needs and services to families that are caught in the cycle of homelessness and are willing to commit to improving their lifestyle. Casa de Las Palmas and Phase II Program offers residential care for a time period not to exceed 24 months to families willing to work toward a goal of self-sufficiency.
	90-Day Programs	Shelter for 90 days. The goal of this program is to provide stability to the family while giving them the opportunity to secure employment and savings that will assist in establishing permanent housing. Clients also receive assistance with resumes, job searches, budgeting, and housing. In addition, the program provides ongoing case management and support in areas such as financial management, job skills, parenting skills, and childcare referrals.
	"Sabu Shake, Sr." Good Samaritan Center	Provides meals, shower and laundry facilities, and mail services. Case management is provided, including rental assistance, homeless case management, drug and alcohol services, and spiritual counseling. Day center offers homeless services in the mornings, and community services in the afternoons. Access to phones, fax machine and computers that clients may use for job services and needs; computer assistance available on Wednesdays.
Seaside Health Center – Planned Parenthood		Provides abortion services, birth control, HIV testing, Morning-After Pill (emergency contraception), pregnancy testing & services, STD testing, treatment & vaccines, and women's health care. English and Spanish are spoken; interpretation by telephone available for other languages. Monday-Friday, 8:30am-5pm. Accepts Medi-Cal.
Shoreline Workforce Development Services		Free employment services and resources for job seekers.
Shoreline Church	Food Pantry	The Food Pantry operates on Tuesdays and Thursdays from 12:30p to 2:30p. Besides providing food and clothing, prayer is essential and is offered up in an organic way as not to offend or be forceful.
Sun Street Centers	Men's Residential Treatment Program	Full schedule of recovery based classes including recovery planning, communication skills and relapse awareness; support groups; and 3 meals a day.
	Women's Residential Treatment Program	Full schedule of recovery based classes including recovery planning, communication skills and relapse awareness; support groups; and 3 meals a day.
	Outpatient Counseling Services	Counseling services to empower men and women to stop the cycle of addiction and take charge of their lives. Participants are provided group and individual sessions and services. Counseling for couples and families are also available. Offered in English and Spanish.
	Pueblo Del Mar	Safe, affordable, transitional housing program with services for the individual's recovery and the family in general.
	Prevention Centers	Variety of services to community members and their families, in order to build awareness and promote action toward resolving community health problems relating to drug and alcohol abuse.

Organization & Program Descriptions

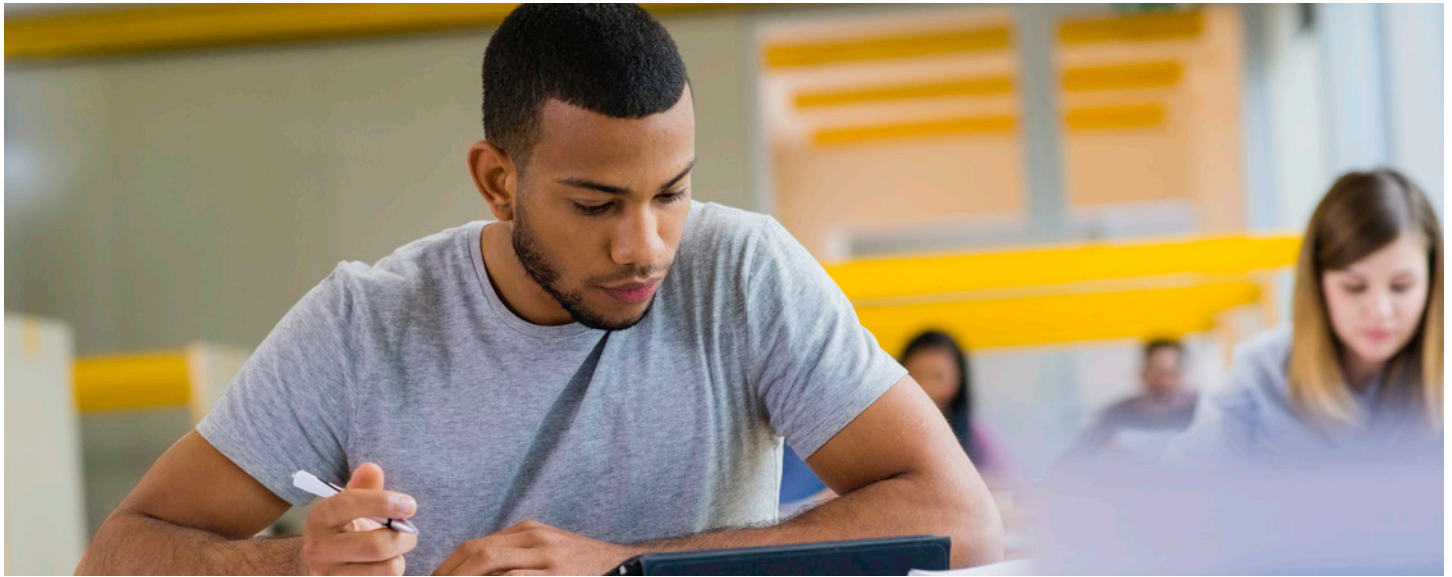
ORGANIZATION	PROGRAM	DESCRIPTION
	Men's Residential Treatment Program	Full schedule of recovery based classes including recovery planning, communication skills and relapse awareness, support groups, 3 meals a day.
	Women's Residential Treatment Program	Full schedule of recovery based classes including recovery planning, communication skills and relapse awareness, support groups, 3 meals a day.
The Epicenter	Education	The program helps youth register for college, apply for college, and connect to alternative education programs.
	Employment	Help creating a resume and cover letter, assistance navigating online applications, help preparing for interviews.
	Health & Wellness	Access to daily meals and snacks and referrals to community services.
	Housing	Assistance evaluating budgets, exploring rental options and applying for housing programs.
The Village Project	Counseling	Individual and group counseling.
	Support Groups	Groups to help with anger management, grieving and young women.
	Emotional Emancipation (EE) Circles	Discussion and support circles based on principles of Black/African-Centered Psychology.
	Grief Support Services	Thursday nights 6:00pm-7:15pm. A six-week support group designed to help people who are grieving learn how to cope with the loss of a loved one.
	Mae C. Johnson Education and Cultural Enrichment Academy	Monday-Friday 2:00pm-6:00pm except Wednesdays 1:00pm-6:00pm. Multi-pronged learning approach to include tutoring, using computers for academic research and enrichment activities.
	Young Ladies of Empowerment Teen Leadership Program	12-month program designed to create a positive, uplifting and educational outlet.
Tutoring at Dudley Knox Library		Help for students with homework, study guides, or test prep. They have computer access for online portions as well. For younger students with no homework, the parent or guardian can ask the teachers for worksheets or bring workbooks for the appropriate grade and subject.

ORGANIZATION	PROGRAM	DESCRIPTION
United Way	Information and referrals for Community Services	Men and women
Valley Health Associates	Advent	Drug and alcohol rehabilitation. Inpatient and outpatient available. Should be referred from school staff. Accepts Medi-Cal.
	The Camp	Drug and alcohol rehabilitation. Inpatient and outpatient available. Should be referred from school staff. Accepts Medi-Cal.
Veteran's Transition Center (VTC) of Monterey County	Job Development Center	Provides training areas, classes, skills assessments, and other tools for success. Through the VET+PREP! program, VTC currently offers assistance with job placement, quarterly job fairs, job skills training, and skills assessment.
	The Coming Home Program	By providing Veterans with transitional housing and case management programs, they can once again become employable, productive members of the community. VTC does not simply offer short term solutions to homelessness; it strives to better the lives of Veterans experiencing homelessness, and aims to give them the tools they need to help themselves.
	Rental and Deposit Assistance	Services may include: deposit assistance, rental assistance, Veteran outreach, transportation assistance, case management services, assistance obtaining VA & other benefits. The Veterans Transition Center can provide referrals to the appropriate agency. Does not provide funds.
Victory Mission		70 bed emergency shelter for single men experiencing homelessness ages 18 and up. Provides shelter, food, showers, clothing and other supportive services. Doors open at 6:30pm daily.
Young Women's Christian Association (YWCA) of Monterey County		Programs for women experiencing domestic violence. Counseling programs for women and children. Also have legal consultations (but are not attorneys). Confidential shelter for women and children, as well as victims of human trafficking. No age or populations restrictions.



Services

On-Campus Resources



MPUSD Districtwide

Homeless Liaison

Helps families enroll their students at MPUSD and access community resources.

MPUSD Districtwide

Seven Challenges

Drug rehabilitation program that uses group discussion and journaling. Ten week program.

MPUSD Districtwide

Sunstreet Outpatient Youth Program

Intensive outpatient drug counseling for teens in MPUSD. Cost: No charge if students have MediCal. If students don't have MediCal, there is a sliding scale based on income. If a school requires a student's participation, then the district will pay the program cost.

Central Coast H. S.

Academic Programs: Culinary Arts Academy, Public Safety Academy, Digital Media and Design Academy, Health Careers Academy.

Academic Support: Zero Period Tutoring, Designated Intervention and Mentoring Space (Room 21), Project Based Learning Credit Recovery.

Activities: School Newspaper, Co-ed Basketball team.

Marina High School

Academic Programs/Supports: AVID, Counseling.

Athletics: Football, Volleyball, Cross Country, Softball, Swim, Track & Field, Baseball, Basketball, Soccer.

Clubs: Acts of Random Kindness, Art Club, ASB, AVID Club, Bowling Club, Debate Club, Drama Club, Environmental Impact, Gaming Club, Kazoo Club, Key Club, Link Crew, Math Club, Music Club, National Coalition Building Institute, National Honor Society, Year Book.

Monterey High School

Academic Programs: AVID, International Baccalaureate, Sports Professions and Recreation Careers Academy (SPARC), Art, Media, and Performance Academy (AMP), Monterey Academy of Oceanographic Science (MAOS), Business Entrepreneurship Technology Academy (BETA).

Academic Support: After-school math tutoring, Saturday Academy.

Activities: Robotics, Leadership, Music, Drama.

Athletic Programs: Cross Country, Field Hockey, Water Polo, Tennis, Volleyball, Cheerleading, Football, Basketball, Soccer, Wrestling, Lacrosse, Softball, Swimming/Diving, Track & Field, Baseball, Golf.

Career Programs: Navy Junior Reserve Officer Training Corps.

Clubs: AFS, Badminton, Baking Bad, Black Culture Club, Digital Arts Club, Drama, Garden, Golf Club, GSA, Humanitarian Club, Key Club, Kindness Club, Latino Club, Model United Nations, Monterey High Dancers, Motorsports, Multicultural Club, Mural Club, Musical Theater Appreciation, Outdoors, Pearl Status, Student-to-Student.

Seaside High School

Athletics: Cross Country, Field Hockey, Swimming, Volleyball, Cheerleading, Football, Cross Country, Swimming, Basketball, Soccer, Wrestling, Softball, Track & Field, Baseball, Golf.

Clubs: Art Club, Asian Culture Club, AVID, Auto Tech/Robotics, Black Student Union, Cyber Patriots, Dance Club, Drama, E-Sports, EAOP Ambassadors, Environmental Club, FCA, Game Club/Robotics, Gay Straight Alliance Club, Go Green Club, International Club, JROTC, Key Club, Latino Club, Link Crew, S.T.E.P.S., National Honor Society, NCBI, Ocean Defenders, Pacific Islander Club, Running Club, Science & Health Club, Spartan Swim Club, Street Workout, Surf Club, Textiles, Website Development.

Career Programs: Engineering Technology Magnet Pathway, Health, Safety & Public Service Magnet Pathway, Hospitality & Business Magnet Pathway, Multi-Media Communications Magnet Pathway.

Housing



Interfaith Homeless Emergency Lodging Program (I-HELP)

I-HELP men

Short-term lodging and evening meals, tailored advice and support. Men are picked up and brought to the host site every evening, and then dropped off at a central location the next morning. Pick-up is 7 days a week at 4:15 pm.

Eligibility: Men experiencing homelessness, no minors.

I-HELP women

Short-term lodging and evening meals, tailored advice and support. Women are picked up and brought to the host site every evening, and then dropped off at a central location the next morning. Pick-up is 7 days a week at 4:30 pm.

Eligibility: Women experiencing homelessness, no minors.

Community Homeless Solutions (CHS)

The Hamilton House

Provides 16 emergency shelter beds for single women and women with children who are victims of domestic violence, or who are experiencing homelessness. The shelter is open 24 hours a day, 7 days a week, with stays of 30-90 days.

Eligibility: Single women and single women with children.

Natividad Emergency Shelter

12-room emergency shelter providing 32 beds to domestic violence victims in the Salinas Valley. Natividad will also accommodate women experiencing homelessness and their children who are non-domestic violence victims if space is available. Shelter stays are generally 30-90 days. The shelter is open 24 hours a day, 7 days a week.

Eligibility: Domestic violence victims.

Seasonal Warming Shelter

Provides overnight housing to 60 women, men, and families at a facility located in downtown Salinas. The shelter operates during the winter months of November – April, with staff providing case management services. Area churches and organizations provide evening meals and support.

Eligibility: Men, women, and families.

Central Coast Respite Center

Provides shelter and support to adults experiencing homelessness and in need of short term recuperative care following hospitalization. Staff provides case management services to help participants acquire stable housing and access eligible services and benefits. Staff also provides meals and transportation to doctor appointments. Participants are referred to the Center by three local hospitals: Community Hospital of the Monterey Peninsula, Natividad Medical Center, and Salinas Valley Memorial Hospital.

Eligibility: Adults experiencing homelessness.

Homeward Bound

25 units, each with two-bedrooms and a total capacity of 75 beds. Houses single women with children who are experiencing homelessness or victims of domestic violence, and provides supportive services for up to 18 months.

Eligibility: Single women and children.

Intact Families/Lexington Court

18 month program for dual-parent families and single fathers with children experiencing homelessness. Intact Families is housed in a 6-unit complex, each with two-bedrooms and a total capacity of 18 beds.

Eligibility: Dual-parent families and single fathers with children.

Housing

Men in Transition

Serves single men experiencing homelessness at a complex with 8 three-bedroom units (with a 24 bed capacity).

Eligibility: Homeless men.

Women in Transition

Serves single women experiencing homelessness, including victims of domestic violence, at a facility with 6 two-bedroom units at a confidential location.

Eligibility: Single homeless women.

Casa de Paz Program

6 months rental assistance to 14 program participants who live in ten 1-bedroom units, and two 2-bedroom units in Monterey County. Participants receive housing placement assistance, supportive services, and referrals to the NIDO Clinic (Natividad Immunology Division Outpatient) to receive primary health care. Services include HIV testing/counseling, laboratory, case management, health education, treatment adherence education, mental health counseling, and referral services.

Genesis House

Comprehensive assessment, case management, and individualized treatment planning. The co-ed program offers 28 beds for stays of 3 to 6 months. The perinatal program offers 8 beds for stays of 6 to 10 months. Program has a cost.

Eligibility: Ages 18 and up. For the perinatal program, children can be ages 0-5.

Elm House

Traditional Sober Living Environments for single women in early recovery from substance abuse. Length of stay is limited to 18 months, but may be extended to 24 months, with appropriate justification. Program has a cost.

Eligibility: Female, age 18 and up and living alone without custody of children.

Rancho Cielo

Transitional Housing

22 residential beds for Rancho Cielo students or graduates unsafe in their own neighborhood, or experiencing homelessness. Case management works with each resident to identify barriers to success and connect him/her with services for which s/he is eligible.

Eligibility: Youth experiencing homelessness. Referrals usually come from probation. To be eligible to apply, prospective residents must be affiliated with Rancho Cielo. The residents must be willing and able to take on the responsibility of living on campus. They must also be willing to participate in the program.

The Epicenter

Housing

Services include help evaluating budgets, help exploring rental options, and help applying for housing options.

Eligibility: Ages 16-24 at-risk youth and systems involved youth.

Community Human Services (CHS)

Safe Place

Individual, group, and family counseling to help resolve crises and reunite youth with their families. Weekly drop-in dinner at the Monterey Youth Center provides a hot meal and recreational activities for youth. 24-hour access to temporary shelter. The shelter can typically house up to 12 people (6 beds for females and 6 beds for males).

Eligibility: At-risk, runaway and youth experiencing homelessness.

Safe Passages

18 to 24-month stay in a group housing facility with a shared kitchen, bathroom, laundry and common living area. Ongoing assessment, life planning, and case management. Immediate needs for food, clothing and transportation are met until residents can provide for themselves. Have beds for six people.

Eligibility: Youth experiencing homelessness and youth aging out of foster care, ages 18 to 21.

24-Hour Runaway and Homeless Youth Helpline

Central Coast Center for Independent Living Services

Rapid Re-Housing (RRH) and Homeless Prevention (HP) services

Intensive Case Management to assess housing and service needs, financial support when funding is available, and Youth Transition Services.

Eligibility: People with disabilities who are experiencing homelessness or who are at-risk of becoming homeless.

Salvation Army

Transitional Housing Programs

Basic needs and services to families that are caught in the cycle of homelessness and are willing to commit to improving their lifestyle. Casa de Las Palmas and Phase II Program offers residential care for a time period not to exceed 24 months to families willing to work toward a goal of self-sufficiency.

Eligibility: Families who are experiencing homelessness or at risk of becoming homeless within the meaning of HUD regulations and who meet low income guidelines. Ages 18 and up with children.

Housing

90-Day Programs

Shelter for 90 days. The goal of this program is to provide stability to the family while giving them the opportunity to secure employment and savings that will assist in establishing permanent housing. Clients also receive assistance with resumes, job searches, budgeting, and housing. In addition, the program provides ongoing case management and support in areas such as financial management, job skills, parenting skills, and childcare referrals.

Eligibility: Families who are experiencing homelessness or at risk of becoming homeless within the meaning of HUD regulations and who meet low income guidelines. Ages 18 and up with children.

Interim, Inc

Community Housing

Permanent, affordable supportive housing in a variety of locations for over 150 residents. Housing options include 6 and 8-bedroom cooperative group residences, studios and 1 and 2-bedroom apartments. Supportive services include case management and mental health services.

Eligibility: People with mental illness. Referred from Monterey County Behavioral Health (MCBH).

Shelter Cove

Transitional housing for 32 people. Provides case management and mental health services, as well as a variety of peer support groups and social activities.

Eligibility: Adults experiencing homelessness who are living with mental illness. Referred from Monterey County Behavioral Health (MCBH).

Sandy Shores

Permanent, affordable housing for 28 people. Case management and mental health services, as well as a variety of peer support groups and social activities.

Eligibility: Adults experiencing homelessness who are living with mental illness. Referred from Monterey County Behavioral Health (MCBH).

Manzanita Crisis Residential Programs

Short-term crisis residential treatment. The residential program model is a community-based alternative to inpatient psychiatric care. The maximum stay is 30 days. Interim has 28 beds at two facilities, one in Salinas and one in Monterey.

Eligibility: People experiencing a mental health crisis. Referred from Monterey County Behavioral Health (MCBH).

Bridge House

14-bed transitional residential treatment program.

Eligibility: Adults in recovery from both a mental illness and a substance use disorder. Referred from Monterey County Behavioral Health (MCBH).

MCHOME

Outreach, housing and intensive, integrated services. MCHOME's goal is to move individuals experiencing homelessness with psychiatric disabilities off the street and into housing, permanently.

Eligibility: Ages 18 and up. Adults who have severe mental illness and are currently experiencing homelessness. Referred from Monterey County Behavioral Health (MCBH).

Veterans Transition Center (VTC) of Monterey County

The Coming Home Program

By providing Veterans with transitional housing and case management programs, they can once again become employable, productive members of the community. VTC does not simply offer short term solutions to homelessness; it strives to better the lives of Veterans experiencing homelessness, and aims to give them the tools they need to help themselves.

Eligibility: Veterans experiencing homelessness and their families. Complete application for services, then a case manager will reach out.

Rental and Deposit Assistance

Services may include: deposit assistance, rental assistance, Veteran outreach, transportation assistance, case management services, assistance obtaining VA & other benefits. The Veterans Transition Center can provide referrals to the appropriate agency. Does not provide funds.

Eligibility: Very low-income Veterans who are experiencing homelessness or at imminent risk of becoming homeless.

Catholic Charities Diocese of Monterey

Hope in Home

Provides client needs assessment; short-term goal setting and individualized support; one time direct assistance towards a portion of: 1st month of rent, past due rent, past due electricity, gas, or water; and referrals and assistance navigating other local services.

Eligibility: Families and individuals seeking short-term support.

Door to Hope

The Door

14 beds, and is home to Women's Residential Program for alcohol and drug addiction. Offers 3 to 6 months of treatment that costs no more – and often less – than the average 28-day program. Services include: addiction counselors; therapists; family counselors; experts in parenting, stress, anger and mood management; trauma and grief counseling; and psychological counselors, including those qualified to help clients with mental health problems.

Eligibility: Must be a woman and (1) over the age of 18 and (2) have a substance use disorder that requires residential treatment, and (3) be medically and psychiatrically stable and able to participate in an

Housing

active program of counseling, education and other recovery activities, and (4) demonstrate the motivation and willingness to follow all program principles, guidelines and structure.

Housing Resource Center (HRC)

Rental Assistance

HRC case managers work closely with clients to assess their level of need; and at the same time, work directly with landlords to provide a solution that will provide new or retain existing housing in a timely manner. In some cases, assistance with utilities may be available as well. Case managers also assess clients and refer them to other agencies for services and additional aid they may be eligible for, such as food, employment, and child care. Two programs: housing support and family stabilization.

Eligibility: Individual or a family that is experiencing homelessness, or those in danger of becoming homeless. Families experiencing homelessness on CalWORKs. Eligibility worker at CalWORKs will send referral to county, county holds the waitlist (4-6 weeks), and then they will set up an appointment and begin case management. Head of household must be age 18 or older. If parents are undocumented but children receive CalWORKs, they can still receive assistance.

First Time Home Buyer Education

Online course offered in English and Spanish. Teaches how to choose a realtor; understanding each step—and the accompanying forms and documents—in the loan and purchase process; how to set aside funds for home maintenance, taxes, insurance and emergency purposes.

Eligibility: Potential home buyers.

Dorothy's Place

House of Peace

Transitional living program that promotes and provides safety, stability, and wellbeing. Provides structure and supportive services including emotional support, linkage to community resources, educational direction, financial and literacy programs, as well as assistance with benefit applications, employment readiness, and job searches.

Eligibility: Adults who have experienced chronic homelessness (capacity is 24 adults).

Young Women's Christian Association (YWCA) of Monterey County

Programs for women experiencing domestic violence. Counseling programs for women and children. Also have legal consultations (but are not attorneys). Confidential shelter for women and children, as well as victims of human trafficking. No age or populations restrictions.

Eligibility: All women and children who experience domestic violence.

Sun Street Centers

Men's Residential Treatment Program

Full schedule of recovery based classes including recovery planning, communication skills and relapse awareness; support groups; and 3 meals a day.

Eligibility: Men who have a history of substance addiction.

Women's Residential Treatment Program

Full schedule of recovery based classes including recovery planning, communication skills and relapse awareness; support groups; and 3 meals a day.

Eligibility: Single women and women with small children who have a history of substance addiction.

Outpatient Counseling Services

Counseling services to empower men and women to stop the cycle of addiction and take charge of their lives. Participants are provided group and individual sessions and services. Counseling for couples and families are also available. Offered in English and Spanish.

Eligibility: People who have a history of substance addiction and their families.

Pueblo Del Mar

Safe, affordable, transitional housing program with services for the individual's recovery and the family in general.

Eligibility: Women with children who are experiencing homelessness, men with children, and families with children.

Victory Mission

70 bed emergency shelter for single men experiencing homelessness ages 18 and up. Provides shelter, food, showers, clothing and other supportive services. Doors open at 6:30pm daily.

Eligibility: Single men experiencing homelessness ages 18 and up.

One Starfish Safe Parking program

Overnight Safe Parking Program for adults experiencing homelessness and living in their vehicles.

To register for the program, call telephone number and leave a call-back number. A Social Worker will return call within 48 hours to schedule an intake interview.

Eligibility: Adults experiencing homelessness.

Health & Wellness



Community Homeless Solutions

Casa de Paz Program

6 months rental assistance to 14 program participants who live in ten 1-bedroom units, and two 2-bedroom units in Monterey County. Participants receive housing placement assistance, supportive services, and referrals to the NIDO Clinic (Natividad Immunology Division Outpatient) to receive primary health care. Services include HIV testing/counseling, laboratory, case management, health education, treatment adherence education, mental health counseling, and referral services.

Central Coast Center for Independent Living

Information and Referral

Cross disability peer support, information and referral, individual and systems advocacy, independent living skills training, housing assistance, personal assistance services, youth transition services, and assistive technology services.

Eligibility: People with disabilities.

Dorothy's Place

Chinatown Health Services Center

On-site availability of medical services from volunteer doctors and nurses from Natividad Medical Center and from the local community.

Eligibility: People who experience homelessness, poverty, and marginalization in Monterey County.

Community Hospital of the Monterey Peninsula (CHOMP)

Wide range of healthcare services at 15 locations, including the main hospital, outpatient facilities, satellite laboratories, a mental health clinic, a short-term skilled nursing facility, Hospice of the Central Coast, and business offices. Accepts Medi-Cal.

Eligibility: All residents of Monterey County.

RotaCare Monterey

Wednesdays, 5:00 pm to 9:00 pm. Volunteer medical staff provides non-invasive, acute care to uninsured residents of the

Health & Wellness

Monterey Peninsula (18 years and older). Patients are seen on a first come, first served basis or as a scheduled follow-up appointment. Check-in starts at 2:30 pm to get a voucher to be seen that evening. Patient registration begins at 4:00 pm. \$10 donation per visit is requested. Patients should arrive at 2:30 pm to get tickets for registration. If patients cannot be seen that day, staff will give other options for treatment.

Eligibility: Ages 18 and up, uninsured residents of Monterey Peninsula. Will see children, but generally will refer to health department as children should qualify for health insurance.

Clinica de Salud del Valle de Salinas (CSVS)

Seaside Clinic

Accepts Medi-Cal.

Eligibility: Adults and children.

Alvin Dental

Office includes 9 operatories and provides general dentistry, cosmetic dentistry, oral surgery, endodontics, pediatric dentistry and preventative dentistry.

CSVS Mobile clinic

Serves homeless communities in the Monterey Peninsula, Salinas' Chinatown District, and the Pajaro River District in Northern Monterey County. This location provides dental and medical care.

Central Coast Pediatric Dental Group

Accepts Medi-Cal; dental care for those with Denti-Cal and CHDP/Gateway Insurance.

Eligibility: Children & adolescents.

Seaside Health Center — Planned Parenthood

Provides abortion services, birth control, HIV testing, Morning-After Pill (emergency contraception), pregnancy testing & services, STD testing, treatment & vaccines, and women's health care. English and Spanish are spoken; interpretation by telephone available for other languages. Monday-Friday, 8:30 am-5 pm. Accepts Medi-Cal.

Eligibility: All people.

County of Monterey Health Department Clinic Services

Seaside Family Health Center

Offers preventative and primary care, adult and well child exams, chronic adult illness management, family planning including STD screening/treatment, obstetrics care, Comprehensive Perinatal Services Program (CPSP), Latent Tuberculosis Treatment (LTBI), and adult and child psychiatry. Hours of Operation: Monday – Thursday 7:00 am - 7:00 pm; Friday 9:00 am - 5:00pm; Saturday 8:00 am - 5:00 pm.

Eligibility: Accepts all clients. Walk-ins welcome. Accepts Medi-Cal.

Monterey County Clinic at Marina

Offers family practice, obstetrics, Comprehensive Perinatal Services Program (CPSP), STD screening/treatment, walk-in immunizations, and TB screening/treatment. Hours of operation: Monday – Friday 8:00 am - 5:00 pm.

Eligibility: Accepts all clients. Walk-ins welcome. Accepts Medi-Cal.

Bienestar - Marina

Offers adult care and family primary care. Walk-in adult and child visits: Tuesday 8:00 am - 5:00 pm.

Eligibility: Accepts all clients. Walk-ins welcome. Accepts Medi-Cal.

Mental Health & Substance Treatment



NAMI Monterey County

NAMI Peer-to-Peer

Free, 10-session course designed for any adult experiencing a mental health challenge. The course is designed to encourage growth, healing, and recovery.

Eligibility: Adults with mental health disabilities.

NAMI Family-to-Family

Free, 12-session educational course for family, caregivers, friends, and significant others of adults living with mental health challenges. This course helps family members learn more about their loved one's mental illness and ways to support them. This course is also offered in Spanish.

Eligibility: For family, caregivers, friends, and significant others (of all ages) of adults living with mental health challenges.

NAMI Homefront

NAMI Homefront is a free, 6-session, online educational program for families, caregivers and friends of military service members and vets with mental health conditions. This course is designed to address the unique needs of family, caregivers and friends of those who have served or are currently serving our country. The program

is taught by trained family members of service members/veterans living with mental health conditions. Online classes meet weekly in a virtual classroom, so participants experience the same level of interaction and learning as traditional in-person classes. To register for this online course please click on the link and register with NAMI National.

Eligibility: Men and women.

NAMI Family Support Group

Free, confidential and safe groups of families helping other families who live with mental health challenges. In NAMI Family Support Groups, families join a caring group of individuals helping one another by utilizing their collective lived experiences and learned wisdom. Family members can achieve a renewed sense of hope for their loved one living with mental health challenges.

Eligibility: Men and women.

Connection Recovery Support Group

Free, peer-led group for adults living with a mental health challenge. Each group is led by trained individuals who have lived experience in mental health.

Eligibility: Men and women.

Mental Health & Substance Treatment

NAMI Provider Education

Free, 4-hour training developed for the staff of public and private agencies who work with individuals affected by mental health challenges. This course emphasizes a comprehensive understanding of how mental illnesses affect individuals. The class is taught by a team of family members, individuals living with mental health challenges, and one mental health care provider; together these unique perspectives provide professionals a better understanding of what it's like to live with a mental illness. Professionals also gain a better understanding of how to better support families and clients within their own organization.

Eligibility: Men and women.

Community Homeless Solutions (CHS)

Casa de Paz Program

6 months rental assistance to 14 program participants who live in ten 1-bedroom units, and two 2-bedroom units in Monterey County. Participants receive housing placement assistance, supportive services, and referrals to the NIDO Clinic (Natividad Immunology Division Outpatient) to receive primary health care. Services include HIV testing/counseling, laboratory, case management, health education, treatment adherence education, mental health counseling, and referral services.

Community Human Services (CHS)

Outpatient Treatment Centers

Comprehensive assessment, medical evaluation, individualized treatment planning, individual, group and family counseling, trauma and crisis counseling, education on addiction, recovery and communicable illness, introduction to 12-step programs, relapse prevention and coping skills, drug testing, information and referral to other community resources, discharge planning and continuing care support groups.

Eligibility: Men and women, also offer services for under 18 (including drug resource specialists at high schools). Clients can self-refer or treatment center can call.

Off Main Clinic

Provides medication, counseling, and medical consultation to adults experiencing opioid addiction or severe alcoholism. Accepts Medi-Cal.

Eligibility: Adults ages 18 and up experiencing opioid addiction or alcoholism.

Drug and Alcohol Intervention Services for Youth (D.A.I.S.Y.)

Intervention and education services for substance abusing youth. Individual, group and family counseling. Substance abuse and gang education for parents. Services are provided free of charge in English and Spanish. Also offer family support groups.

Eligibility: Youth ages 13-18 who are referred by parents, schools, Social Services, Monterey County Behavioral Health (MCBH), or Probation and Juvenile Drug Court.

Outpatient Counseling

Affordable mental health counseling. Comprehensive mental health and self sufficiency assessment. Walk-in and crisis appointments available. Information and referral as necessary. Sliding scale pay. For Medi-Cal, must be assessed by County Behavioral Health Department first (call 831-755-5505).

Eligibility: Adults, children, couples, and families. Sliding scale. For Medi-Cal, must be assessed by County Behavioral Health Department first (call 831-755-5505).

Counseling and Therapy Services (C.A.T.S.)

A supportive space in which individuals and their families can talk confidentially with LGBT-friendly staff and LGBT-identified professionals. Counseling requires some payment, but accepts Medi-Cal. Seaside # is (831) 394-4622. Call to enroll. Drop-in groups are free.

Eligibility: People with HIV/AIDS and people who are gay, lesbian, bisexual, transgender and/or questioning.

Domestic Violence/Anger Management

52-week Domestic Violence Intervention curriculum. Alternative, brief treatment for anger issues (minimum 12-week commitment required). English and Spanish. Program has a cost.

Eligibility: Court-referred domestic violence offenders or self-referred individuals seeking treatment for anger management.

Parent Education Program

Support and educate parents of at-risk children and families in crisis. The goal is to provide parents with new skills and tools so they can parent their children with love, commitment and safety. 8 weeks of classes in English and Spanish provided by a trained instructor. Two programs: positive parenting program and strengthening families program (tier 2 vs tier 3).

Eligibility: Families in crisis or at-risk.

Pathways to Safety

An early intervention and community-based, family-centered program that works from the belief that parents love their children, and want to ensure their safety, health, and happiness.

Eligibility: Families who need additional support.

Safe Place

Individual, group and family counseling to help resolve crises and reunite youth with their families. Weekly drop-in dinner at the Monterey Youth Center provides a hot meal and recreational activities for youth. 24-hour access to temporary shelter.

Eligibility: At-risk, runaway, and youth experiencing homelessness.

Central Coast Center for Independent Living

Information and Referral

Cross disability peer support, information and referral, individual and systems advocacy, independent living skills training, housing assistance, personal assistance services, youth transition services, and assistive technology services.

Eligibility: People with disabilities.

Mental Health & Substance Treatment

Salvation Army

Sabu Shake, Sr. Good Samaritan Center

Provides meals, shower and laundry facilities, and mail services. Case management is provided, including rental assistance, homeless case management, drug and alcohol services, and spiritual counseling. Day center offers homeless services in the mornings, and community services in the afternoons.

Eligibility: Clients experiencing homelessness and low-income individuals/families who live on Peninsula. Can self-refer, but have to fill out an intake application. Either ages 18 and up or families (no unaccompanied minors).

Interim, Inc.

OMNI Resource Center

Peer-led programs promoting wellness and recovery, as well as recreational and social opportunities. Wellness programs are free with no referral necessary. Teen program meets on Wednesdays for TAY program, but young people also welcome to come to meetings.

Eligibility: Anyone with mental health challenges.

Wellness and Recovery Academy

Day rehabilitation program to support clients in their recovery from mental health and alcohol/drug recovery.

Eligibility: Referred from Monterey County Behavioral Health (MCBH).

Dual Recovery Services

Group and individual counseling, peer support and social, educational and recreational activities, designed to help people attain and maintain a clean and sober life-style.

Eligibility: Individuals with co-occurring mental health and substance use disorders who are in recovery.

Outreach and Aftercare Services

Group and individual counseling, peer support and social, educational and recreational activities, designed to help people attain and maintain a clean and sober life style.

Eligibility: Individuals with co-occurring mental health and substance use disorders who are in recovery.

CHOICES

Short-term (3 weeks up to 90 days) day treatment intensive program. Provides group, individual therapy, and peer support where participants can regain and maintain their mental health. The goal is to prevent future mental health crises requiring inpatient hospital or residential crisis care.

Eligibility: Adults who experience hospitalizations for mental health reasons and need to learn to manage their mental health symptoms and emotions. Clients referred from Monterey County Behavioral Health (MCBH)

Success Over Stigma

Community advocacy and educational outreach program designed to combat the three most prevalent forms of stigma: community

perception, internal stigma and external stigma. Outreach and education program, not direct service provider. Recruits and trains mental health clients to share their successful stories of recovery with their peers and the community.

Catholic Charities Diocese of Monterey

Pathway to Stability

A client-centered, long-term program that provides comprehensive services for clients determined to make changes in their lives towards a stable future. Participants in this program embark on a 9 month journey of individual & group support, financial coaching, and a myriad of resources to support their dreams of a better future. Seaside location offers family supportive services (eviction prevention, filling out CalWORKs applications, etc).

Eligibility: Families in a cycle of poverty.

Mental Health Counseling Program

Experienced, licensed clinicians, fluent in English and Spanish, who supervise and mentor master and post-master level interns. Interns work directly with clients who have various mental health diagnoses, ages, family constellations and cultural backgrounds.

Eligibility: Individuals (children, adolescents and adults), couples, and families.

Monterey County Rape Crisis Center (MCRCC)

24-Hour Crisis Hotline

Free, confidential crisis lines that are available 24 hours a day, 7 days a week in Spanish and English. Sexual Assault Counselors provide crisis intervention services and referrals to survivors, family, friends, and community members. Also offer: Survivors of Human Trafficking; Campus Advocate at CSUMB (Title IX reports, peer-to-peer counseling).

Eligibility: All services available to minors, but would be mandated reporters. Ages 12 or over can consent to own services. Ages 12-17, therapy services are free of charge. Ages 18 and up, sliding fee scale.

Advocacy Services

Connects survivors with the Victim Witness Assistance Program, campus academic support, and any other community resources the survivor may need.

Eligibility: Sexual assault survivors.

Child Abuse Treatment Program

Counseling services for youth who have suffered trauma (sexual, physical, emotional, neglect) and exposure to domestic and community violence.

Eligibility: Ages 17 and under.

Individual and Group Therapy

One-on-one confidential counseling, and group offers a safe and confidential environment to rebuild self-esteem and regain a sense of control.

Eligibility: Survivors of sexual assault and significant others.

Mental Health & Substance Treatment

My Life Club

Fosters an environment that empowers young women to embrace their strengths, make safe and healthy decisions in their lives, and create positive change in their communities.

Eligibility: Clubs currently at Seaside High School and Marina High School.

My Strength Club

The MyStrength Campaign was developed by Men Can Stop Rape, a nonprofit organization in Washington DC. The campaign revolves around the theme My Strength is Not for Hurting and encourages young men to take action to end sexual violence and to build healthy relationships.

Eligibility: Clubs currently at Seaside High School and Marina High School.

Door to Hope

Nueva Esperanza

Services include: Motivational Enhancement Therapy, Twelve-Step Facilitated Therapy, Seeking Safety for Trauma-exposed Clients, Matrix Model, Parents as Teachers, and Cognitive Behavioral Therapy.

Eligibility: Admission Requirements: (1) must be a woman over the age of 18 and (2) be pregnant or be in custody of or will have custody within 30 days of, a child age five (5) or under, and (3) if applicable, be a sibling, age 5-11 years, of that young child who is determined to be behaviorally stable and appropriate for admission; and (4) have a significant addictive disorder that necessitates residential treatment; and (5) be medically and psychiatrically stable and able to participate in an active program of counseling, education, and other recovery activities; and (6) be able to parent the young children in their custody; and (7) demonstrate the motivation and willingness to follow all program principles, guidelines, and structure.

Santa Lucia

Services include: Cognitive Behavioral Therapy, Seeking Safety for trauma-exposed clients, Seven Challenges, Motivational Enhancement Therapy, customized academic program, individual therapy, and family and group counseling.

Eligibility: Admission Requirements: (1) must be a female between the ages of 12 and 18; (2) have a substance use disorder; (3) have a mental health disorder; (4) be medically and psychiatrically stable enough to participate in an active program of therapy, counseling, education, and other treatment activities; and (5) be willing to participate in an intensive residential program.

MC Start

Services include: developmental screening; specialty-focused medical assessment and care; psychological assessment; Dyadic Therapy; Attachment Therapy; Theraplay®; Circle of Security; Occupational Therapy; Sensory Integration Therapy; Parent Child Interactive Therapy (PCIT); Parents as Teachers; family support services; education; and case management services.

Eligibility: Children between ages 0 and 11 years with some of the following: Little or no prenatal care; biological mothers with a history of substance use disorder; positive toxicology screen of mother or newborn at delivery; low newborn birth weight; small head circumference; neonatal intensive care admission; admittance in the child welfare system; biological mothers involved with the criminal justice system, either corrections or probation; delayed development; troubling behavior; family history of domestic violence; history of multiple placements; and/or history of trauma.

Integrated Co-Occurring Treatment (ICT)

ICT services begin and remain based in the home. Additional services are offered at the ICT offices as well, including: Cognitive Behavioral Therapy; Motivational Enhancement Therapy; Matrix Model™; peer support group activities; Seven Challenges; trauma-informed care; and individual, group and family therapy.

Eligibility: ICT is open to referrals from any community provider or agency including the juvenile probation department, other treatment organizations, schools, and various health professionals such as doctors, psychologists, and therapists. Parents and guardians may also make referrals. Medi-Cal, various insurance, and private pay are all accepted.

Outpatient Program

Services include: Motivational Enhancement Therapy, Twelve-Step Facilitated Therapy, Seeking Safety® for Trauma-Exposed Clients, Matrix Model®, life skills, family therapy, relapse prevention, medical treatment, behavioral therapy, and psychological treatment.

Eligibility: Outpatient participants must be: (1) over the age of 18; (2) have a substance use disorder that necessitates outpatient treatment; (3) be medically and psychiatrically stable and able to participate in an active program of outpatient counseling, education, and other recovery activities; (4) demonstrate the motivation and willingness to follow all program principles, guidelines, and structure; and (5) have Medi-Cal, approved insurance, or the ability to self-pay.

Monterey County Behavioral Health (MCBH)

Treatment Hotline at Natividad Hospital

Helps find a safe solution for a crisis.

Eligibility: People experiencing mental health crises that aren't life-threatening.

Family Support Groups

Groups offer support through education and peer sharing to increase participant knowledge about mental health. Family members get an opportunity to discuss their unique experiences and learn from peers about coping skills, community resources and, most of all that they are not alone in their journey. Every 2nd and 4th Wednesday from 5:15 pm to 6:30 pm.

Eligibility: Family members who live with and care for loved ones with a mental disorder, ages 18 and up.

Mental Health & Substance Treatment

Adult Services

Mental health services, medication support, case management, brokerage and groups for those individuals who have a chronic persistent mental illness and meet the targeted population, which includes people with schizophrenia, bipolar disorder, and atypical psychosis. Typically moderate to severe end. Also utilize Beacon Health Strategies (if Medi-Cal), but can refer from clinic.

Eligibility: Individuals who have a chronic persistent mental illness and meet the targeted population, which includes people with schizophrenia, bipolar disorder, and atypical psychosis. Uninsured and Medi-Cal accepted. Can call or walk in to clinic.

Young Adult Services

Young Adult Services collaborates with other services providers, the youth and their family to provide services and supports to help the youth move forward in their life domains: Education, Employment, Living Situation, Personal/Community Engagement. Based on the philosophy that services should be: Youth-guided, Strength-based, Individualized, Community-based and Culturally competent.

Eligibility: Ages 16-25

Children's Services

Inpatient and outpatient services; medical evaluation; case management; day care services; home partners; parent partnership and support. Referrals are made through the Department of Social Services and Probation Department, local school district's Special Education Departments, and local hospitals. Community referrals are possible but are screened to ensure compliance with the target population. Accepts Medi-Cal or fees are based on ability to pay. Everybody can access, mainly SMI, will see anybody and then connect them to services they need. Typically moderate to severe end. Also utilize Beacon Health Strategies (if Medi-Cal), but can refer from clinic.

Eligibility: Seriously emotionally disturbed children and youth who are in or at-risk of out of home placement or who are qualified under special education. Uninsured and Medi-Cal accepted. Can call or walk in to clinic.

Alcohol & Drug Services

Prevention; intervention; drug court; drug treatment; narcotic replacement therapy. Walk-in hours.

Eligibility: All residents of Monterey County.

Whole Person Care

Comprehensive case management. Registered Nurse case managers assess WPC enrollees for health, housing, and social services needs, and then provide warm hand-offs to primary care clinics, mental health/substance abuse therapists, social services, housing supports and placement, and employment training.

Eligibility: Medi-Cal recipients who are high users of hospital and emergency department facilities. Also must have at least one of the following: experiencing homelessness/chronically homeless; have mental illness or substance use disorders or both; or have multiple chronic diseases.



Dorothy's Place

Drop-in Center

Trained staff provide trauma-informed care to help individuals get assistance into transitional and permanent housing, to sign up for benefits and assistance programs, to obtain information on substance abuse counseling, and to learn about physical and mental wellness. 9:00 am.-1:00 pm on Monday, Thursday, Friday, and Saturday. 9:00 am - 2:00 pm on Wednesdays.

Eligibility: Adults and children who are experiencing homelessness.

YWCA Monterey County

Programs for women experiencing domestic violence. Counseling programs for women and children. Also have legal consultations (but are not attorneys). Confidential shelter for women and children, as well as victims of human trafficking. No age or populations restrictions.

Eligibility: All women and children who experience domestic violence.

Mental Health & Substance Treatment

Monterey County Al-Anon

Al-Anon

Support group.

Eligibility: Family members of people experiencing alcoholism.

Alateen

Support group.

Eligibility: Family members of people experiencing alcoholism, under age 21.

Family Service Agency of the Central Coast

Suicide Prevention Service

24-hour suicide crisis line.

Eligibility: People in Monterey, Santa Cruz, and San Benito Counties.

The Village Project

Counseling

Individual and group counseling.

Eligibility: Adolescent, families, individual adult and couples. Founded to meet needs of African-American community, but serves all underserved people. Open to minors.

Support Groups

Groups to help with anger management, grieving and young women.

Eligibility: People experiencing anger management or grief; young women. Founded to meet needs of African-American community, but serves all underserved people. Open to minors.

Emotional Emancipation (EE) Circles

Discussion and support circles based on principles of Black/African-Centered Psychology.

Eligibility: Black/African-American adults.

Grief Support Services

Thursday nights 6:00 pm - 7:15 pm. A six-week support group designed to help people who are grieving learn how to cope with the loss of a loved one.

Eligibility: People who are grieving. Founded to meet needs of African-American community, but serves all underserved people. Open to minors.

Sun Street Centers

Prevention Centers

Variety of services to community members and their families, in order to build awareness and promote action toward resolving community health problems relating to drug and alcohol abuse.

Eligibility: People living in and around Seaside.

Men's Residential Treatment Program

Full schedule of recovery based classes including recovery planning, communication skills and relapse awareness, support groups, 3 meals a day.

Eligibility: Men who have a history of substance addiction.

Women's Residential Treatment Program

Full schedule of recovery based classes including recovery planning, communication skills and relapse awareness, support groups, 3 meals a day.

Eligibility: Single women and women with small children who have a history of substance addiction.

Outpatient Counseling Services

Counseling services to empower men and women to stop the cycle of addiction and take charge of their lives. Participants are provided group and individual sessions and services. Counseling for couples and families are also available. Offered in English and Spanish.

Eligibility: People who have a history of substance addiction and their families.

Pueblo Del Mar

Safe, affordable, transitional housing program with services for the individual's recovery and the family in general.

Eligibility: Women with children experiencing homelessness, men with children, and families with children.

Papillion Center for Loss and Transition

Good Grief for Kids & Teens

Good Grief for Kids & Teens is an age-based psycho-education program designed to let kids know they are not alone, to give their grief a voice through play, art and storytelling and to support the adults who care for them. Each session is professionally led by therapists with expertise and experience in childhood grief.

Eligibility: Kids and teens.

Educational Workshops

Workshops yearly. Check website for current workshops. Program has a cost.

Eligibility: Kids and teens.

Valley Health Associates

Advent

Drug and alcohol rehabilitation. Inpatient and outpatient available. Should be referred from school staff. Accepts Medi-Cal.

Eligibility: Teens.

The Camp

Drug and alcohol rehabilitation. Inpatient and outpatient available. Should be referred from school staff. Accepts Medi-Cal.

Eligibility: Teens.

Workforce Development



Rancho Cielo

Silver Star Youth Employment Program

Offers intensive educational instruction to students between the ages of 15.5 and 18. All students are screened prior to acceptance and must have a desire to make positive changes in their lives. Most students are on probation when referred to Rancho Cielo but recommendations may also come from the juvenile court, schools or parents. Graduates receive a high school diploma or GED.

Eligibility: Ages 15.5-18, male and female.

Rancho Cielo Youth Corps

On-the-job training program serving young people, ages 18-24, to be prepared for regular full time employment. Crews learn through their involvement in a variety of construction projects that teach everything from work ethics to complex construction skills. They are employed by Rancho Cielo during their tenure in the Youth Corps.

Eligibility: Ages 18-24, male and female.

Drummond Culinary Academy

Provides at-risk youth with an opportunity to gain classroom training, work experience and transferrable skills that help them

become employable in the culinary and hospitality industry. The 10-month program, split between the kitchen and the high school academic classroom, results in a culinary certificate and a high school diploma. Students will complete a 200 hour externship program working with local restaurants to gain additional employment experience. The program offers job readiness training, as well as placement and referral services for graduates.

Eligibility: Ages 16 to 25; must meet Workforce Investment Act (WIA) income eligibility requirements; must be considered at-risk (low income, drug use, gang involvement, criminal background, truancy, school credit deficient, school drop outs, probation referral, experiencing homelessness, in foster care); must be drug free; required to follow strict dress code guidelines and behavioral expectations while enrolled in the program, both on and off campus; must follow the law and conditions of probation.

The Epicenter

Employment

Help creating a resume and cover letter, assistance navigating online applications, help preparing for interviews.

Eligibility: Ages 16-24 at-risk youth and systems involved youth.

Workforce Development

Interim, Inc

Supported Education and Employment Services

Provides career, vocational, and educational counseling, job development and coaching. Improves educational opportunities by helping clients access classes and training programs at local colleges.

Eligibility: Adults with mental illness who are seeking employment or who are interested in pursuing higher education.

Workforce Education and Training

Specialized training and services about working in the mental health system.

Eligibility: Mental health clients and family members who work in the public mental health system.

Veteran's Transition Center of Monterey

Job Development Center

Provides training areas, classes, skills assessments, and other tools for success. Through the VET+PREP! program, VTC currently offers assistance with job placement, quarterly job fairs, job skills training, and skills assessment.

Eligibility: Veterans.

OneStop Career Centers

Salinas One Stop

Employment Services include vocational assessment, employment readiness and job appraisal, education and job training services, referrals to community services, and ongoing employment goals coaching. Supportive Services include child care, transportation, work-related education and training expenses such as uniforms, books, licenses and fees.

Eligibility: Families participating in employment related activities.

One Stop Career Center of Monterey County/Community Benefits Branch

Assists families toward a path of work and self-sufficiency. The purpose of the cash assistance program is to provide temporary financial assistance to economically disadvantaged families with dependent children. Benefits are based on household size, family income and resources.

Eligibility: CalWORKs recipients.

Shoreline

Workforce Development Services

Free employment services and resources for job seekers.

Eligibility: General public.

Center for Employment Training (CET)

Job placement assistance and job training programs that teach marketable skills to people of all educational levels and backgrounds, especially those most in need.

Eligibility: General public.

California Conservation Corps

Provides young men and women ages 18-25 years old a year of paid service to the State of California.

Eligibility: General public.

Loaves, Fishes & Computers

Provides low-cost or no-cost computer systems, technology assistance and computer repair to low-income families, seniors, veterans and people with disabilities.

Eligibility: Low-income.

Salvation Army

Sabu Shake, Sr. Good Samaritan Center

Access to phones, fax machine and computers that clients may use for job services and needs; computer assistance available on Wednesdays.

Eligibility: Homeless and low-income clients who live on the Peninsula; no unaccompanied minors.

Postsecondary



California State University Monterey Bay

Admissions Office

Student Disability Resources

Support services and accommodations.

Eligibility: Students at CSUMB with disabilities.

Personal Growth & Counseling Center

Crisis help, counseling (individual and group), mental health screenings. Offers walk-in hours Monday - Thursday.

Eligibility: CSUMB Students.

TRiO Student Support Services

Advising and peer mentoring.

Eligibility: First generation students; low income students; students with documented disabilities.

Guardian Scholars

Financial and academic support.

Eligibility: Current and former foster youth; youth experiencing homelessness.

Hartnell College

Admissions Office

Department of Supportive Programs and Services

Support services and accommodations.

Eligibility: Students at Hartnell with disabilities.

Mi CASA (Center for Achievement and Student Advancement)

Academic support.

Eligibility: Various students, including programs for Dreamers.

Extended Opportunity Programs and Services (EOPS)

Support services, academic and otherwise.

Eligibility: First generation, low income, under-represented college students.

TRiO/Student Support Services

Academic counseling and tutoring.

Eligibility: TRiO students.

Homeless Liaison

Academic counseling and support.

Eligibility: Students experiencing homelessness that want to attend Community College.

Guardian Scholars Program

Financial and academic support.

Eligibility: current and former foster youth.

High School Equivalency (HSE) Program

Free assistance for obtaining HSE.

Eligibility: Anyone who has worked in agriculture for at least 75 days in the last 2 years.

Monterey Peninsula College

Admissions Office

Access Resource Center

Support services and accommodations.

Eligibility: Students at MPC with disabilities.

TRiO Student Support Services

Academic counseling and tutoring.

Eligibility: TRiO students.

Extended Opportunity Programs and Services (EOPS)

Student support.

Eligibility: Low-income and economically disadvantaged students.

Basic Needs



Gathering for Women

Women's Day Center, offering breakfast, lunch, clothing, and support, 8:00 am - 4:00 pm, Monday through Friday.

Eligibility: Women experiencing homelessness.

Community Homeless Solutions (CHS)

Mobile Outreach Service Team (M. O. S. T.)

Mobile outreach program that consists of a team of skilled workers who drive to areas where folks experiencing homelessness congregate. The team distributes emergency food, clothing, and supplies. The team also provides resource information and referrals, and conducts intakes to begin the process for accessing services and support.

12th Street Day Center

The Center provides folks experiencing homelessness with showers, laundry, computers/internet, microwave, cell phone charging, counseling, and case management. The Center is currently open to women experiencing homelessness on Tuesdays and Wednesdays, 1:30 to 3:30 pm.

Eligibility: Women experiencing homelessness.

Casa de Paz

6 months rental assistance to 14 program participants who will live in ten 1-bedroom units, and two 2-bedroom units in Monterey County. Participants receive housing placement assistance, supportive services, and referrals to the NIDO Clinic (Natividad Immunology Division Outpatient) to receive primary health care. Services include HIV testing/counseling, laboratory, case management, health education, treatment adherence education, mental health counseling, and referral services.

Community Human Services (CHS)

Safe Passages

18 to 24 month stay in a group housing facility with a shared kitchen, bathroom, laundry and common living area. Ongoing assessment, life planning, and case management. Immediate needs for food, clothing, and transportation are met until residents can provide for themselves.

Eligibility: Youth experiencing homelessness and youth aging out of foster care, ages 18 to 21.

Basic Needs

Salvation Army

Sabu Shake, Sr. Good Samaritan Center

Provides meals, shower and laundry facilities, and mail services. Case management is provided, including rental assistance, homeless case management, drug and alcohol services, and spiritual counseling. Day center offers homeless services in the mornings, and community services in the afternoons.

Eligibility: Homeless and low-income clients who live on Peninsula. Can self-refer, but have to fill out an intake application. Either ages 18 and up or families (no unaccompanied minors).

Clinica de Salud del Valle de Salinas (CSVS)

Seaside Clinic

Eligibility: Open to adults and children.

Food Bank of Monterey County

Emergency Food Assistance Program

Takes place monthly at twenty-six sites throughout the county where volunteers distribute bags containing essentials such as tuna, fruit, vegetables, rice, beans, bread and other donated foods. These sites are carefully selected and conveniently located as to reach as many people in need as possible.

Eligibility: Families or individuals below the EFAP Maximum Income guidelines.

The Family Market Program

An outdoor produce-only distribution for those who are most in need of fresh food and the least able to afford it.

Eligibility: Low/no income households. Expanded recently to particularly target children and seniors.

Kids N.O.W. (Nutrition On Weekends)

Children in need are provided a bag of food to take home with them over weekends and school breaks.

Eligibility: Schools with over 90% of students living in poverty.

Breast Cancer Patient Food Assistance Program

Delivers food selected to address the unique nutritional needs of patients in treatment or recovery and include other healthful items, especially fresh produce, that their limited budgets cannot accommodate.

Eligibility: Women in need going through treatment for breast cancer. Eligible women can sign up for this program through the Breast Cancer Assistance Group of Monterey County.

Catholic Charities Diocese of Monterey

CalFresh and Nutrition Education

California's name for federal Supplemental Nutrition Assistance Program. Provides additional resources to put healthy and

nutritious food on the table. Our bilingual team focuses on the most needed areas of our Counties, connecting families and individuals to CalFresh benefits by completing applications, advocating, and providing education to reduce fear and stigma associated with applying for benefits. Also offers a Nutrition Education Program to raise awareness about the principle of choices as a way to a healthy lifestyle and to promote well-being, nutrition, movement, family, and culture.

Eligibility: U.S. citizen or a Legal Permanent Resident below income threshold.

Dorothy's Place

Dorothy's Kitchen

Full-service, commercial kitchen serving delicious meals from fresh ingredients. 8:30 am to 9:30 am for breakfast and 1:00 pm to 2:00 pm for lunch every day.

Eligibility: People who experience homelessness, poverty, and marginalization in Monterey County.

Drop-in Center

Trained staff provide trauma-informed care to get assistance into transitional and permanent housing, to sign up for benefits and assistance programs, to obtain information on substance abuse counseling, and to learn about physical and mental wellness. 120 people daily average. Drop-in Center is open 9:00 a.m.-1:00 p.m. on Monday, Thursday, Friday, and Saturday, and 9:00 a.m. - 2:00 p.m. on Wednesdays.

Eligibility: Adults and children who are experiencing homelessness.

St. Clare's Corner

Provides household goods, clothing, and food. Open during the high unemployment months for farm workers from October through April. Open every Monday from 10:00 a.m. to noon from October to April.

Eligibility: Families and individuals that live in the neighborhood of Dorothy's Place in Salinas

Emergency Food Bags

Free food bags for anyone in need; order between 11:00 am - 12:00 pm at the drop-in center

Eligibility: General public

Shoreline Church

Food Pantry

The Food Pantry operates on Tuesdays and Thursdays from 12:30 p.m. to 2:30 p.m. Besides providing food and clothing, prayer is essential and is offered up in an organic way as not to offend or be forceful.

Eligibility: Individuals and families in Monterey County.

Basic Needs

California Rural Legal Assistance (CRLA)

Salinas Unit

Provides legal assistance in the areas of: Education (special education, language access, truancy, bullying and harassment, discipline – suspensions/expulsions/transfers, etc.); Public benefits (CalFresh, General Assistance (GA), Temporary Assistance for Needy Families (TANF), CalWORKs, In-Home Supportive Services (IHSS), Unemployment Insurance Benefits (UIB), State Disability Insurance (SDI)); Employment (wage theft, harassment, reasonable accommodation, lack of rest/meal periods, language restrictions, discrimination based on race, religion, age, disability, etc.), and Housing (habitability, notices to terminate tenancy, eviction, discrimination, reasonable accommodation, etc.).

Indigenous Program

Provides legal advocacy and educational outreach and supports leadership development in California's rural indigenous Mexican and Central American communities.

Eligibility: Members of indigenous Mexican farmworker communities.

LGBT Program

Represents LGBTQ clients in a variety of types of legal cases, including immigration, employment discrimination and education matters, as well as legal name and gender change petitions.

Eligibility: LGBTQ people, especially those in rural communities.

#NOMAS: Farmworker Sexual Violence Assistance

Increase the availability and quality of legal assistance provided to victims of sexual violence living within migrant and farmworker communities; establish safety plans for farmworkers who experience sexual violence, particularly for those living in labor camps; and increase the knowledge base of attorneys, advocates and law enforcement on the challenges and issues facing farmworkers who experience sexual violence.

Eligibility: Farmworker women.

Catholic Charities Diocese of Monterey

Pathway to Stability

A client-centered, long-term program that provides comprehensive services for clients determined to make changes in their lives towards a stable future. Participants in this program embark on a nine month journey of individual & group support, financial coaching, and a myriad of resources to support their dreams of a better future.

Eligibility: Families in a cycle of poverty.

Immigration and Citizenship Program

In-depth case analysis, representation in citizenship interviews, professional case counseling, Citizenship Classes, and more. Also assists with Deferred Action Childhood Arrivals (DACA) applications. Seaside location offers immigration services (paperwork, consultations, renewals on DACA, etc., but not attorneys. Some services are free and some are not).

Eligibility: Non-citizens. If under 18, should ideally come with a parent, but can come by themselves.

Central Coast Energy Services

Financial assistance with electricity, plumbing and other utilities

Eligibility: People living in Monterey county

United Way

Information and referrals for Community Services

Eligibility: Men and women

First United Methodist Church

Serves breakfast 6:30 am - 8 am, lunch 11:30 am - 12:30 pm, Sunday through Friday. Also has clothes closet, art room, 12-step groups, computer lab and access to other supportive services. Closed Saturdays.

Eligibility: Food services for all ages.

Youth Empowerment



Boys and Girls Clubs of Monterey County

Seaside Clubhouse

Daily homework help; Health and Fitness; Visual and Performing Arts; Character and Leadership Development. College & Career Readiness which has daily tutoring, weekly college prep workshops, college trips and field trips.

Eligibility: Kids and teens.

Marina Teen Center

A fun, safe, healthy environment and affordable teen program where all teens can participate and learn. Offers a variety of recreational opportunities for the teens of Marina and surrounding communities.

Eligibility: Middle and high school students of the ages of 12 thru 18 who live in Marina and surrounding communities.

Girls, Inc. of the Central Coast

ECHO Leadership Program

Leadership/ mentoring program. A year-long program designed to encourage these girls to pursue post-secondary education and plan for future careers.

Eligibility: Local high school sophomore and junior girls, including Seaside High. Students from non-target high schools can apply, but would need to get transportation to target high schools. Costs \$10.

The Village Project

Mae C. Johnson Education and Cultural Enrichment Academy

Monday - Friday 2:00 pm - 6:00 pm except Wednesdays 1:00 pm - 6:00 pm. Multi-pronged learning approach to include tutoring, using computers for academic research and enrichment activities.

Eligibility: at-risk students from grades 1 to 12. Founded to meet needs of African-American community, but serves all underserved people.

Young Ladies of Empowerment Teen Leadership Program

12-Month program designed to create a positive, uplifting and educational outlet.

Eligibility: Young women ages 13-18.

Harmony at Home

Teen Success, Inc. Program for Young Mothers

The Teen Success, Inc. Program is an 18 month program for pregnant or parenting young women. program includes: Educational navigation and support to help young moms graduate high school. Parenting education to develop skills needed to nurture their child's growth and school readiness. Coaching with a mentor to support goal setting, address challenges young moms may face, and connect to resources. A weekly Peer Learning Group where young moms come together and focus on parenting education, health and wellness, and self-empowerment.

Eligibility: In order to be eligible for the Teen Success program, a teen MUST:

- Be a first-time teen mother (or pregnant with first child);
 - Be between the ages of 13 and 19;
 - Have NOT graduated from high school or obtained a GED.
- No referrals right now.

Restorative Justice Partners, Inc.

Restorative Justice in the Schools

Provides students, school staff, and parents supplemental processes to build community, confront challenges and handle conflict in a way that focuses on accountability and maintaining relationships. Services include: mediation, circles, conflict education and community building & problem solving circles.

Eligibility: Available at Central Coast High, Marina High and Seaside High. Referrals can come through schools, Monterey County Probation Department, or Silver Star Youth Employment.

Victim Offender Reconciliation Program

A voluntary mediated process in which victims of crime have the opportunity to meet the offender in a safe and structured setting to explore how to make things as right as possible.

Eligibility: Referrals can come through schools, Monterey County Probation Department, or Silver Star Youth Employment.

Youth Empowerment

Merchant Accountability Panel

A process that focuses directly on the pervasive crime of juvenile shoplifting.

Eligibility: referrals can come through schools, Monterey County Probation Department, or Silver Star Youth Employment.

Victim Impact Program

Geared toward helping offenders become more aware of the long-range impact crime has on victims, their families, and the community.

Eligibility: Referrals can come through schools, Monterey County Probation Department, or Silver Star Youth Employment.

Circles

Circle of Hope is for community members who have loved ones incarcerated, Reintegration Circles are a process to assist people released from prison in preparing a successful reentry, Community Building and Problem Solving Circles view community members as the experts in their own problems and solutions.

Eligibility: Referrals can come through schools, Monterey County Probation Department, or Silver Star Youth Employment.

CSUMB

Imagine College

Summer Scholar Institute (SSI) gives students a taste of college life and allows them to study a particular area of interest in order to gain college credit while they're still in high school.

Eligibility: Students from Seaside High.

Educational Talent Search (ETS)

Academic advisement, career exploration, financial aid/scholarship and college admissions assistance, college tours, cultural events, and other educational enrichment opportunities.

Eligibility: Students from local Monterey County high schools.

Monterey Peninsula College

Upward Bound MPC

Tutoring and college prep.

Eligibility: first generation, low income students age 13 to 19 from Monterey HS and Seaside HS.

Tutoring at Dudley Knox Library

Help for students with homework, study guides, or test prep. They have computer access for online portions as well. For younger

students with no homework, the parent or guardian can ask the teachers for worksheets or bring workbooks for the appropriate grade and subject.

Eligibility: All ages and most subjects. Students must bring their own work and go through a background check before receiving tutoring (occurs on military base). Do not need to be military-affiliated. Since it is on base, every parent/driver must be a U.S. citizen and do a security background check before being allowed to come on base.

To begin tutoring, the parent or guardian needs to email: breakfastforyourbrain@nps.edu

Rancho Cielo

Construction Academy/Scholars

Students are engaged in the classroom, vocational activities and workshops through Rancho Cielo's partnership with Hartnell College's East Campus, John Muir Charter School, and The Offset Project specializing in Solar Panel installation. The program will serve up to 30 students at a time, with open enrollment.

Eligibility: Ages 16 to 24 years of age; not a High School Diploma Graduate (may transfer a GED into a HS Diploma), must meet Workforce Investment Act (WIA) income eligibility requirements; must be considered at-risk (low income, drug use, gang involvement, criminal background, truancy, school credit deficient, school drop outs, probation referral, experiencing homelessness, in foster care); must be drug free; required to follow strict dress code guidelines and behavioral expectations while enrolled in the program, both on and off campus; must follow the law and any conditions of probation.

The Epicenter

Education

The program helps youth register for college, apply for college, and connect to alternative education programs.

Eligibility: Ages 16-24 at-risk youth and systems-involved youth.

Central Coast Center for Independent Living

Information and Referral

Cross Disability Peer Support, Information and Referral, Individual and Systems Advocacy, Independent Living Skills Training, Housing Assistance, Personal Assistance Services, Youth Transition Services, Assistive Technology Services.

Eligibility: People with disabilities.



Contact Information

Contact Information

ORGANIZATION	PROGRAM	ADDRESS / PHONE / EMAIL	WEBSITE
Boys and Girls Clubs of Monterey County	Seaside Clubhouse	1332 La Salle Avenue Seaside, CA 93955 (831) 394-5171	https://bgcmc.org/teens/
California Conservation Corps	Main Office	(800) 952-5627	https://ccc.ca.gov/
California Rural Legal Assistance (CRLA)	Main Office	3 Williams Road Salinas, CA 93901 (831) 757-5221	www.CRLA.org
	Salinas Unit		https://www.crla.org/salinas-office-map
	Indigenous Program		http://www.crla.org/indigenous-program
	LGBT Program		http://www.crla.org/lgbt-program
	#NOMAS: Farmworker Sexual Violence Assistance		http://www.crla.org/farmworker-sexual-violence-technical-assistance
Catholic Charities Diocese of Monterey	Main Office	922 Hilby Avenue, Suite C Seaside, CA 93955 (831) 393-3110	https://catholiccharitiescentralcoast.org/
	Hope in Home		https://catholiccharitiescentralcoast.org/family-supportive-services/hope-in-home/
	Mental Health Counseling Program		https://catholiccharitiescentralcoast.org/mental-health-services/
	CalFresh and Nutrition Education		https://catholiccharitiescentralcoast.org/family-supportive-services/calfresh/
	Pathway to Stability	For family services: Gfigueroa@catholiccharitiescentralcoast.org	https://catholiccharitiescentralcoast.org/family-supportive-services/pathways/
	Immigration and Citizenship Program	1705 Second Avenue Salinas, CA 93905 (831) 422-0602	https://catholiccharitiescentralcoast.org/immigration-citizenship/
Center for Employment Training (CET)	Main Office	24 Alvin Drive Salinas, CA 93906 (831) 424-0665	https://cetweb.edu/location/salinas-ca/
Central Coast Center for Independent Living	Main Office	318 Cayuga Street, Suite 208 Salinas, CA 93901 Phone: (831) 757-2968 Fax: (831) 757-5549	http://www.cccil.org/
	Information and Referral		http://www.cccil.org/ourservices/independent-living-program/
	Rapid Re-Housing (RRH) and Homeless Prevention (HP) services		http://www.cccil.org/homeless-services/
Central Coast Energy Services	Main Office	P.O. Box 2707 Watsonville, CA 95077 (888) 728 3637	https://www.energyservices.org/index.html
Central Coast Pediatric Dental Group	Main Office	631 E Alvin Drive, Suite E Salinas, CA 93906 (831) 443-5801	https://www.ccpediatricdentalgroup.com/contact/
Clinica de Salud del Valle de Salinas (CSVS)	Main Office		http://www.csvs.org/
	CSVS Mobile clinic	(831) 970-1972	http://www.csvs.org/MobileClinic.htm
	Alvin Dental	620 E Alvin Drive, Suite G Salinas, CA 93906 (831) 444-9722	http://www.csvs.org/SalinasCAAlvinDental.htm
	Seaside Clinic	1156 Fremont Blvd #101 Seaside, CA 93955 Phone: (831) 583-9004	http://www.csvs.org/SeasideCASoledad.htm
Community Homeless Solutions	Main Office	3087 Wittenmeyer Court Marina, CA 93933 (831) 384-3388	
	Casa de Paz Program		https://www.communityhomelessolutions.org/permanent-housing
	The Hamilton House		https://www.communityhomelessolutions.org/emergency-shelters
	Natividad Emergency Shelter		https://www.communityhomelessolutions.org/emergency-shelters
	Homeward Bound		https://www.communityhomelessolutions.org/transitional-housing

Contact Information

ORGANIZATION	PROGRAM	ADDRESS / PHONE / EMAIL	WEBSITE
	Intact Families/Lexington Court		https://www.communityhomelessolutions.org/transitional-housing
	Men in Transition		https://www.communityhomelessolutions.org/transitional-housing
	Women in Transition		https://www.communityhomelessolutions.org/transitional-housing
	Mobile Outreach Service Team (M.O.S.T.)		https://www.communityhomelessolutions.org/outreach
	Seasonal Warming Shelter	20 W. Market Street Salinas, CA 93905	https://www.communityhomelessolutions.org/emergency-shelters
	Central Coast Respite Center	780 Hamilton Ave. Seaside, CA 93955	https://www.communityhomelessolutions.org/emergency-shelters
	12th Street Day Center	299 Twelfth Street, Suite C Marina, CA 93933 (831) 384-3388	https://www.communityhomelessolutions.org/day-centers
Community Human Services	Main Office	2560 Garden Rd., Ste. 201 Monterey, CA 93940 (831) 658-3811	
	Genesis House		https://chservices.org/substance-abuse/genesis-house/
	Elm House		https://chservices.org/substance-abuse/elm-house/
	Pathways to Safety	P.O. Box 3076 Monterey, CA 93942 (831) 658-3811	https://chservices.org/youth/pathways-to-safety/
	Domestic Violence/Anger Management	(831) 394-4622 x708	https://chservices.org/mental-health/domestic-violence-anger-management/
	Off Main Clinic	1083 South Main Street Salinas, CA 93901 (831) 424-4828	https://chservices.org/substance-abuse/off-main-clinic/
	Drug and Alcohol Intervention Services for Youth (D.A.I.S.Y.)	Salinas: 855 E. Laurel Drive, Building H Salinas, CA 93905 (831) 233-9029 Seaside: 1178 Broadway Seaside, CA 93955 (831) 394-4622	https://chservices.org/youth/d-s-y/
	Outpatient Counseling	Seaside Family Services Center 1178 Broadway Seaside, CA 93955 (831) 394-4622	https://chservices.org/mental-health/outpatient-counseling/
	Safe Place	590 Pearl Street Monterey, CA 93940 (831) 373-4421	https://chservices.org/youth/safe-place/
	Safe Passages	544 Pearl St. Monterey, CA 93940 (831) 717-4126	https://chservices.org/youth/safe-passage/
	24-Hour Runaway and Homeless Youth Helpline	(831) 241-0914	
	Outpatient Treatment Centers	Salinas Outpatient Treatment Center 1087 S. Main Street Salinas, CA 93901 (831) 237-7222 Monterey Outpatient Treatment Center 2560 Garden Rd., Ste. 201 Monterey, CA 93940 (831) 658-3811	https://chservices.org/substance-abuse/outpatient-treatment/
County of Monterey Health Department Clinic Services	Main Office		
	Seaside Family Health Center	1156 Fremont Blvd. Seaside, CA 93955 (831) 899-8100	http://www.montereycountyclinicservices.org/our-services/our-locations/

Contact Information

ORGANIZATION	PROGRAM	ADDRESS / PHONE / EMAIL	WEBSITE
	Monterey County Clinic at Marina	3155 DeForest Rd. Marina, CA 93933 (831) 384-1445	http://www.montereycountyclinicservices.org/our-services/our-locations/
	Bienestar - Marina	299 12th Street Marina, CA 93933 (831) 755-4353	http://www.montereycountyclinicservices.org/our-services/our-locations/
CSUMB	Main Office	100 Campus Center Seaside, CA 93955	https://csumb.edu/
	Admissions Office	(831) 582-3738	https://csumb.edu/admissions
	Student Disability Resources	(831) 582-3672	https://csumb.edu/sdr
	Personal Growth & Counseling Center	(831) 582-3969	https://csumb.edu/pgcc
	TRIO Student Support Services	(831) 582-4451	https://csumb.edu/trio
	Guardian Scholars	(831) 582-5042	https://csumb.edu/guardianscholars
	Imagine College	(831) 582-4456	https://csumb.edu/eosp/imagine-college
	Educational Talent Search (ETS)	(831) 582-3662	https://csumb.edu/talent
Door to Hope	Main Office	130 W. Gabilan Street Salinas, CA 93901 Tel. (831) 758-0181 Fax. (831) 758-5127	http://doortohope.org/
	Nueva Esperanza		
	The Door		http://doortohope.org/programs/residential/hayward-home/
	Santa Lucia		http://doortohope.org/programs/residential/santa-lucia/
	MC Start		http://doortohope.org/programs/clinics/mcstart/
	Integrated Co-Occurring Treatment (ICT)		http://doortohope.org/programs/outpatient/ict/
	Outpatient Program		http://doortohope.org/programs/outpatient/outpatient-program/
Dorothy's Place	Main Office	30 Soledad St Salinas, CA 93901 (831) 757-3838	https://www.dorothysplace.org/
	House of Peace		http://www.dorothysplace.org/house-peace
	Dorothy's Kitchen		http://www.dorothysplace.org/dorothys-kitchen
	Drop-in Center		http://www.dorothysplace.org/drop-in-center
	St. Clare's Corner		http://www.dorothysplace.org/st-clares-corner
	Emergency Food Bags	(831) 229-4023	
	Chinatown Health Services Center	115 E. Lake St. Salinas, CA 93901 (831) 757-3838	https://www.dorothysplace.org/chinatown-health-services-center/
The Epicenter	Main Office	20 Maple Street Salinas, CA 93901 (831) 998-7291	https://epicentermonterey.org/
	Education		https://epicentermonterey.org/services/on-site-services/
	Employment		https://epicentermonterey.org/services/on-site-services/
	Health & Wellness		https://epicentermonterey.org/services/on-site-services/
	Housing	Tues, Weds, Thurs: 12 pm - 6 pm	https://epicentermonterey.org/services/on-site-services/
Family Service Agency of the Central Coast	Suicide Prevention Service	1-877-663-5433 (ONE LIFE)	https://fsa-cc.org/suicide-prevention-service/
First United Methodist Church	Main Office	404 Lincoln Ave. Salinas, CA 93901 (831) 424-0855	http://salinasfirst.org/
Food Bank for Monterey County	Main Office	353 W. Rossi Street Salinas, CA 93907 (831) 758-1523	https://www.foodbankformontereycounty.org/
	Emergency Food Assistance Program		http://www.foodbankformontereycounty.org/food-assistance/#Calendar

Contact Information

ORGANIZATION	PROGRAM	ADDRESS / PHONE / EMAIL	WEBSITE
	The Family Market Program	Various locations; check calendar	http://www.foodbankformontereycounty.org/food-assistance/
	Kids N.O.W. (Nutrition On Weekends)	Participating school sites throughout Monterey County.	http://www.foodbankformontereycounty.org/programs/
	Breast Cancer Patient Food Assistance Program	Breast Cancer Assistance Group of Monterey County P.O. Box 221582 Carmel, CA 93922 (831) 649-6365	http://www.foodbankformontereycounty.org/programs/
Gathering for Women	Main Office	147 El Dorado Street Monterey, CA (831) 241-6154	https://www.gatheringforwomen.com/
Girls, Inc. of the Central Coast	ECHO Leadership Program	318 Cayuga Street, Suite 206 Salinas, CA 93901 Voice (831) 772-0882	http://girlsinc.org/what-we-do/programs/
Harmony at Home	Teen Success, Inc. Program for Young Mothers	Carmel: 3785 Via Nona Marie, Suite 300, Carmel, CA 93923 (831) 625-5160 Salinas: 9 West Gabilan Street, #3, Salinas, CA 93901 (831) 272-6644	http://harmony-at-home.org/teen-success-inc/
Hartnell College	Main Office	411 Central Avenue Salinas, CA 93901	
	Admissions Office	(831)755-6711	https://www.hartnell.edu/admissions-records
	Department of Supportive Programs and Services	Building B, Room 101 (831) 755-6760 x 7012	https://www.hartnell.edu/department-supportive-programs-services-dsps
	Mi CASA (Center for Achievement and Student Advancement)	Building D, Room 383 (831) 770-6126	https://www.hartnell.edu/specialprograms
	Extended Opportunity Programs and Services (EOPS)	Building B, Room 130 (831) 755-6760 x 7012	https://www.hartnell.edu/eopscare
	TRIO/Student Support Services	(831) 755-6860	https://www.hartnell.edu/trio-student-support-services
	Homeless Liaison	Building D, Room 119 (831) 755-6944	https://www.hartnell.edu/guardian-scholars-program
	Guardian Scholars Program	Building D, Room 119 (831) 755-6944	https://www.hartnell.edu/guardian-scholars-program
	High School Equivalency (HSE) Program	1752 E. Alisal Street Salinas, CA 93905 (831) 770-7070	www.hartnell.edu/hep
Housing Resource Center (HRC)	Rental Assistance	201 A John Street Salinas, CA 93901 Main Office: (831) 424-9186	http://www.hrcmontereycounty.org/programs/
	First Time Home Buyer Education	201 A John Street Salinas, CA 93901 (831) 424-9186	http://www.hrcmontereycounty.org/programs/
Interfaith Homeless Emergency Lodging Program (I-HELP)	I-HELP men	Pick-up is at the parking lot along the Monterey Recreation Trail, across from the Naval Postgraduate School (NPS) Del Monte Ave. gate. (831) 869-0614 or (831) 251-8663	https://www.ihelpmontereybay.org/copy-of-clone-page-2
	I-HELP women	Pick-up location is at the parking lot on Camino El Estero, just across from the Y and close to the bird fountain on the lake. (831) 393-5154 or (831) 251-8663	https://www.ihelpmontereybay.org/copy-of-men-s-location
Interim Inc.	Main Office	P.O. Box 3222 Monterey, CA 93942	https://www.interiminc.org/programs/
	Community Housing	(831) 649-4522	
	Shelter Cove	(831) 649-4522	

Contact Information

ORGANIZATION	PROGRAM	ADDRESS / PHONE / EMAIL	WEBSITE
	Sandy Shores	(831) 649-4522	
	Manzanita Crisis Residential Programs	(831) 649-4522	
	Bridge House	(831) 647-3000	
	MCHOME	(831) 883-3030	
	Supported Education and Employment Services	(831) 800-7530	
	Workforce Education and Training	(831) 800-7530	
	Wellness and Recovery Academy	(831) 647-3000	
	Dual Recovery Services	(831) 676-3715	
	Outreach and Aftercare Services	(831) 676-3715	
	CHOICES	(831) 800-7530	
	Success Over Stigma	(831) 800-7530	
	OMNI Resource Center	Pajaro Street Wellness Center 339 Pajaro St. Salinas, CA, 93901 (831) 800-7530	
	Loaves, Fishes & Computers	Main Office	938 S. Main Street Salinas, CA 93901 (831) 393-9260
Marina Teen Center	Main Office	304 Hillcrest Ave Marina, CA 93933 (831) 884-9542	https://www.ci.marina.ca.us/295/Teen-Center
Monterey County Al-Anon	Main Office	P. O. Box 51901 Pacific Grove, CA 93950 English: (831) 373-2532 Español: (831) 424-6207	http://www.montereycounty-al-anon.org/
Monterey County Behavioral Health (MCBH)	Main Office	299 12th St. Suite A Marina, CA 93933 Phone: (831) 647-7652 Fax: (831) 647-7940	
	Adult Services		http://www.co.monterey.ca.us/government/departments-a-h/health/behavioral-health/how-to-get-started/adult-services
	Children's Services		http://www.co.monterey.ca.us/government/departments-a-h/health/behavioral-health/how-to-get-started/children-s-services
	Treatment Hotline at Natividad Hospital	Crisis Team: (831) 755-4111	http://www.co.monterey.ca.us/government/departments-a-h/health/behavioral-health/how-to-get-started/how-to-get-crisis-services
	Family Support Groups	Marina - Family Support Group 299 Twelfth St. Marina CA, 93933 (831) 647-7652	http://www.co.monterey.ca.us/government/departments-a-h/health/behavioral-health/family-support-groups-grupos-de-apoyo-familiar
	Young Adult Services	Various locations throughout Monterey County (831) 784-5662	http://www.co.monterey.ca.us/government/departments-a-h/health/behavioral-health/how-to-get-started/young-adult-services
	Alcohol & Drug Services	ACCESS Marina walk-in hours: 10 am - 2 pm Monday - Friday 299 Twelfth Street Marina, CA 93933	http://www.co.monterey.ca.us/government/departments-a-h/health/behavioral-health/alcohol-drug-services

Contact Information

ORGANIZATION	PROGRAM	ADDRESS / PHONE / EMAIL	WEBSITE
	Whole Person Care	General information: (831) 755-4583 or (831) 755-4323 Referrals: (831) 755-4630	http://www.co.monterey.ca.us/government/departments-a-h/health/public-health/whole-person-care
Monterey County Rape Crisis Center (MCRCC)	Main Office	Monterey: P.O. Box 2630 Monterey CA 93942 (831) 373-3955 Salinas: P.O. Box 2401 Salinas, CA 93902 (831) 771-0411	
	Advocacy Services		http://www.mtryrapecrisis.org/advocacy-services
	Child Abuse Treatment Program		http://www.mtryrapecrisis.org/child-abuse-treatment-program
	Individual and Group Therapy		http://www.mtryrapecrisis.org/counseling
	My Life Club		http://www.mtryrapecrisis.org/my-life-club
	MyStrength Club		http://www.mtryrapecrisis.org/mystrength-club
	24-Hour Crisis Hotline	24-Hour Crisis Number: (831) 375-4357 or (831) 424-4357	http://www.mtryrapecrisis.org/crisis-line
Monterey Peninsula College	Main Office	980 Fremont Street Monterey, CA 93940	
	Admissions Office	(831) 646-4002	https://www.mpc.edu/admissions
	Access Resource Center	(831) 646-4070	https://www.mpc.edu/student-services/specialized-programs/access-resource-center-arc
	TRiO Student Support Services	(831) 646-4246	https://www.mpc.edu/student-services/specialized-programs/trio-programs/student-support-services
	Extended Opportunity Programs and Services (EOPS)	(831) 646-4247	https://www.mpc.edu/student-services/specialized-programs/extended-opportunity-programs-services-eops
	Upward Bound MPC	(831) 646-4129	https://www.mpc.edu/student-services/specialized-programs/trio-programs/upward-bound-4037
Monterey Peninsula Unified School District	Main Office		https://www.mpusd.net/
	Marina High School	298 Patton Pkwy Marina, CA 93933 (831) 583-2060	https://mahs.mpusd.net/
	Seaside High School	2200 Noche Buena St Seaside, CA 93955 (831) 392-3530	https://shs.mpusd.net/
	Monterey High School	101 Herrmann Dr Monterey, CA 93940 (831) 392-3801	https://montereyhigh.mpusd.net/
	Central Coast High School	200 Coe Ave Seaside, CA 93955 (831) 392-3560	https://cchs.mpusd.net/
NAMI Monterey County	Main Office	1020 Merrill Street, Suite 1015 Salinas, CA 93901 (831) 422-6264	https://namimonterey.org/programs/
One Starfish Safe Parking program		Locations vary (831) 275-5167	http://www.onestarfishsafeparking.org/
OneStop Career Centers	Main Office		
	Salinas One Stop	730 La Guardia Street Salinas, CA 93905 (831) 755-4452	http://mcdss.co.monterey.ca.us/careers/

Contact Information

ORGANIZATION	PROGRAM	ADDRESS / PHONE / EMAIL	WEBSITE
	One Stop Career Center of Monterey County/Community Benefits Branch	1760 Fremont Boulevard, Suite D2 Seaside, CA 93955 (866) 323-1953	http://mcdss.co.monterey.ca.us/benefits/
Papillon Center for Loss and Transition	Main Office	824 Munras Street, Suite K and L Monterey, CA 93940	
	Good Grief for Kids & Teens		https://www.papillon-center.org/good-grief-for-kids-teens/
	Educational Workshops		https://www.papillon-center.org/educational-workshops/
Rancho Cielo	Main Office	710 Old Stage Road Salinas, CA 93908 (831) 444-3533	
	Transitional Housing		http://www.ranchocieloyc.org/transitional-housing
	Silver Star Youth Employment Program		http://www.ranchocieloyc.org/silver-star-youth-program
	Rancho Cielo Youth Corps		http://www.ranchocieloyc.org/rancho-cielo-youth-corps
	Drummond Culinary Academy		http://www.ranchocieloyc.org/drummond-culinary-academy
	Construction Academy/Scholars		http://www.ranchocieloyc.org/rancho-cielo-construction-academy
Restorative Justice Partners, Inc.	Restorative Justice in the Schools	229 Reindollar Avenue, Suite B, Marina, CA 93933 (831) 384-4325	http://restorativejusticepartners.com/
RotaCare Monterey	Main Office	1156 Fremont Street Seaside, CA 93955 (inside the Seaside Family Health Center) (831) 333-6495	https://www.rotacarebayarea.org/monterey
Salvation Army	Main Office	1491 Contra Costa Street Seaside, CA 93955 Yesenia Lopez-Rubio at (831) 899-4911	https://montereypeninsula.salvationarmy.org/monterey_peninsula_corps/overcome-poverty
	Transitional Housing Programs		
	90-Day Programs		
	Sabu Shake, Sr. Good Samaritan Center	Sabu Shake, Sr. Good Samaritan Center 800 Scott Street (off East Ave.) Sand City, CA 93955 (831) 899-4988	https://montereypeninsula.salvationarmy.org/monterey_peninsula_corps/cure-hunger
Seaside Health Center – Planned Parenthood	Main Office	625 Hilby Ave. Seaside, CA 93955 (831) 394-1691	https://www.plannedparenthood.org/health-center/california/seaside/93955/seaside-health-center-2233-90130
Shoreline	Workforce Development Services	1325 N. Main Street Salinas, CA 93906 (831) 287-2350	https://www.ccgoodwill.org/work/career-centers/
Shoreline Church	Food Pantry	2500 Garden Road Monterey, CA 93940 (831) 655-0100	https://shorelinechurch.org/food-pantry/
Sun Street Centers	Main Office	11 Peach Drive Salinas, CA 93901 (831) 753-5135	http://sunstreetcenters.org/
	Men's Residential Treatment Program	8 Sun Street Salinas, CA 93901 (831) 753-5145	http://sunstreetcenters.org/counseling/mens-residential-program/
	Women's Residential Treatment Program	335 6th Street Hollister, CA 95023 Melissa Edwards, Director of Recovery Services (831) 265-7317	http://sunstreetcenters.org/counseling/womens-residential-treatment/

Contact Information

ORGANIZATION	PROGRAM	ADDRESS / PHONE / EMAIL	WEBSITE
	Outpatient Counseling Services	Salinas: 11 Peach Drive Salinas, CA 93901 (831) 753-6001 Seaside: 1760 Fremont Blvd., Suite E1 Seaside, CA 93955 (831) 753-6001	http://sunstreetcenters.org/counseling/outpatient-recovery-services/
	Pueblo Del Mar	3043 MacArthur Drive Marina, CA 93933 (831) 582-9461	http://sunstreetcenters.org/recovery-services/pueblo-del-mar-family-recovery-community/
	Prevention Centers	(831) 899-6577	http://sunstreetcenters.org/prevention/
The Village Project	Main Office	1069 Broadway Ave, Suite 201 Seaside, CA 93955 (831) 392-1500	http://villageprojectinc.org/
	Counseling		http://villageprojectinc.org/?page_id=212
	Support Groups		http://villageprojectinc.org/?page_id=212
	Emotional Emancipation (EE) Circles		http://villageprojectinc.org/?page_id=588
	Grief Support Services		http://villageprojectinc.org/?page_id=588
	Mae C. Johnson Education and Cultural Enrichment Academy		http://villageprojectinc.org/?page_id=235
Tutoring at Dudley Knox Library	Young Ladies of Empowerment Teen Leadership Program		http://villageprojectinc.org/?page_id=245
	Main Office	LT Kelly Moon Graduate Student Naval Postgraduate School knmoon@nps.edu To begin tutoring, the parent or guardian needs to email: breakfastforyourbrain@nps.edu	
United Way	Information and referrals for Community Services	60 Garden Court, Suite 350 Monterey, CA 93940 (831) 372-8026 2-1-1	http://www.unitedwaymcca.org/
Valley Health Associates	Main Office	388 Monterey Street Salinas, CA 93901 (831) 424-6655	http://valleyhealthassociates.com/
Veteran's Transition Center of Monterey County	Main Office	220 12th Street, Martinez Hall Marina, CA 93933 (831) 883-8387	
	Job Development Center		https://www.vtcmonterey.org/apply-job-development-center/
	The Coming Home Program		https://www.vtcmonterey.org/apply-coming-home-program/
	Rental and Deposit Assistance	40 Bonifacio Plaza Monterey, CA 93940 (831) 375-1184	https://www.vtcmonterey.org/apply-ssvf/
Victory Mission	Main Office	43 Soledad St. Salinas, CA 93901 (831) 424-5688	http://www.victorymissionsalinas.com/
Young Women's Christian Association (YWCA) of Monterey County	Main Office	236 Monterey St. Salinas, CA 93901 (831) 422-8602	https://www.kintera.org/site/pp.asp?c=anJHKMNFqG&b=482991



National Center for Youth Law Monterey County Contact Information

Margaret Olmos, California FosterEd California Director

molmos@youthlaw.org

Adrienne (Bing) Goldsworth, Program Manager

agoldsworth@youthlaw.org

Kristen Gast, Education Liaison

kgast@youthlaw.org

Marcos Martinez, Education Liaison

mmartinez@youthlaw.org



National Center for Youth Law

405 14th Street,
15th Floor
Oakland, CA 94612
(510) 835-8098

www.youthlaw.org
info@youthlaw.org