



ESSER UPDATE

December 2023

ELEMENTARY AND SECONDARY SCHOOL EMERGENCY RELIEF (ESSER)

Federal COVID-19 relief funding came in three packages:

- ESSER I Coronavirus Aid, Relief, and Economic Security (CARES) Act
- ESSER II Coronavirus Response and Relief Supplemental Appropriations (CRRSA) Act
- ESSER III American Rescue Plan (ARP) Act

These highly flexible funds are designed to help address local relief, prevention & preparation, and recovery efforts relative to COVID-19.





OUR COMMITMENT



Students

Allocate funds to address learning loss, build character education and provide enrichment (before/after school and summer programs).



Families

Provide services and tools to support innovative teaching and learning opportunities.



Educators

Transform teaching and provide equitable resources across the district.



Community

Based on stakeholder feedback and data, disperse funds in a meaningful and fiscally responsible manner.



ESSER I: \$1,161,324.63

Expended funds March 13, 2020 through September 30, 2022

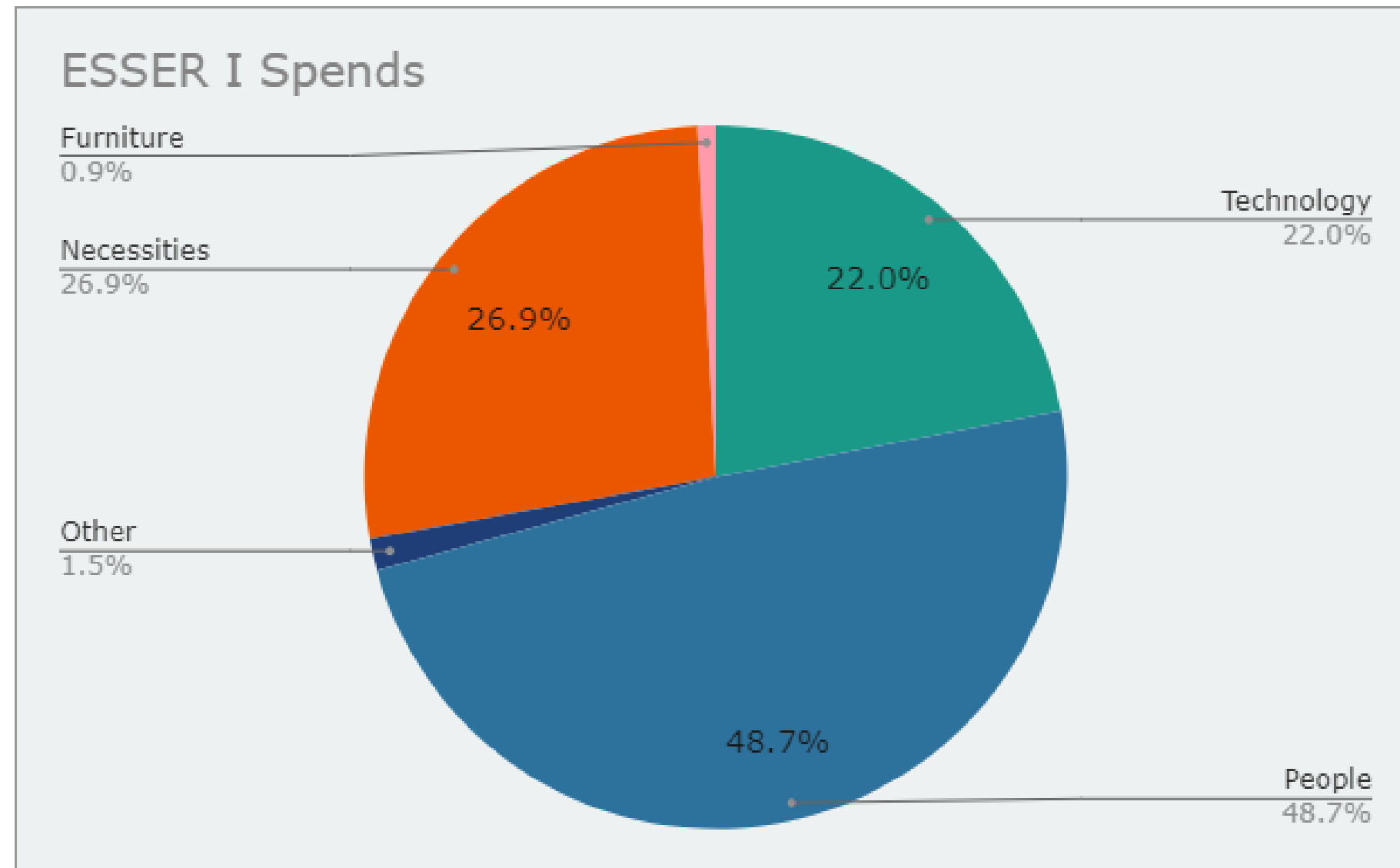
Technology: Wireless Hotspots, computer supplies, conference cameras, speakerphones, licenses for online learning

People: Overloads, overtime costs, online teaching staff, substitute coverage

Other: Private school allocation

Necessities: Nurse supplies, room divider panels, sanitization supplies, floor scrubbing machines, carpet cleaners

Furniture: Outdoor classrooms and communal dining





ESSER II: \$4,801,577.92

Expended funds March 13, 2020 through September 30, 2023

May be used for pre-award costs dating back to March 13, 2020, so long as ESSER I funds have been expended first.

Character Education: Professional development training, keynote assembly for students

Enrichment/Summer: Staff and supplies for summer enrichment/learning

Facilities: Air filters, sanitization supplies, replacement HVAC systems, security cameras

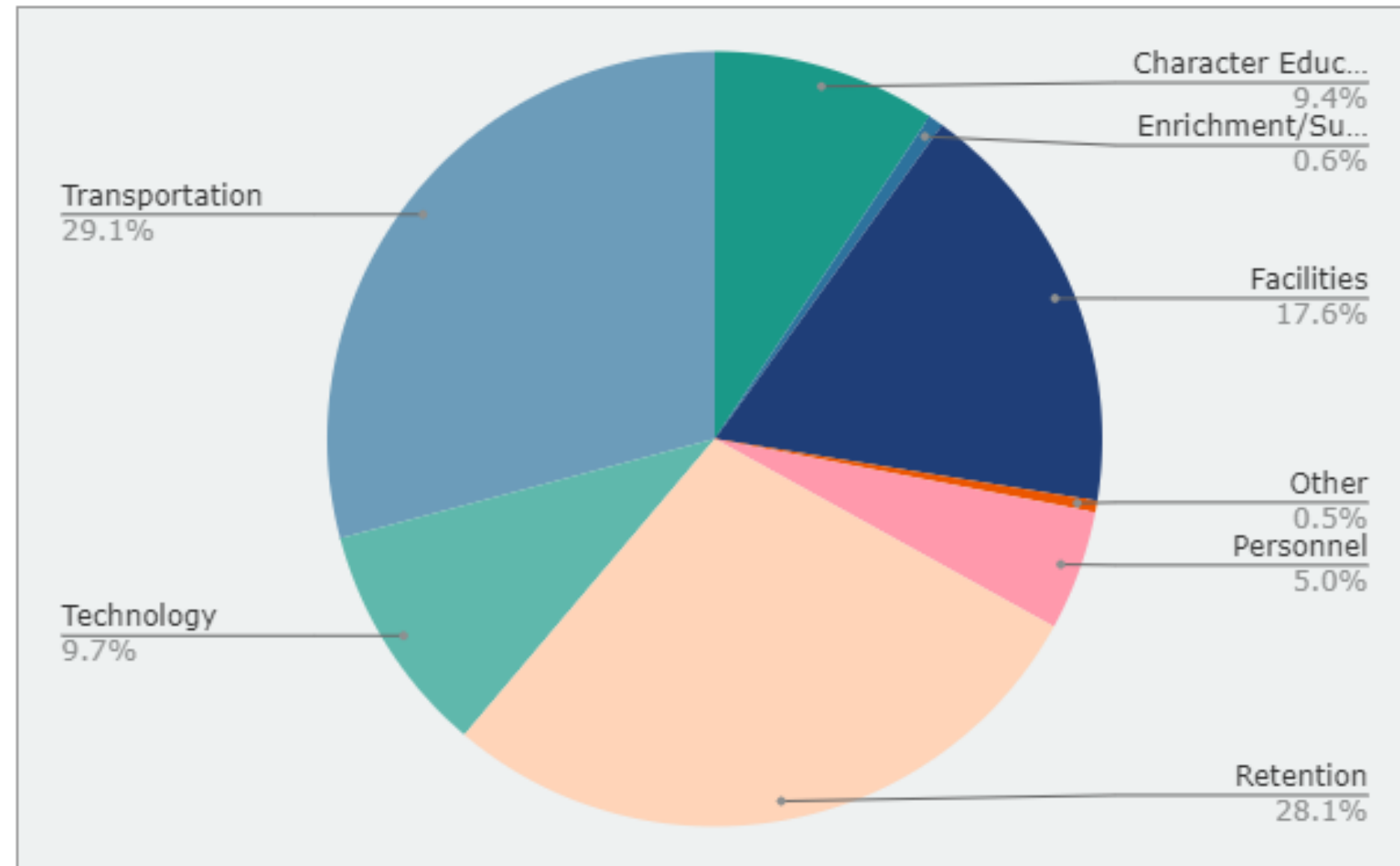
Other: Indirect fees associated with the grant

Personnel: Credit Recovery Teacher, IT Technicians to support online learning and additional devices, Admin Secretary to oversee ESSER and COVID related projects

Retention: 2% Stipend for all staff

Technology: Online learning licenses, 1000 Chromebooks, TVs/projectors

Transportation: 8 buses, 2 maintenance vehicles, 2-way radios

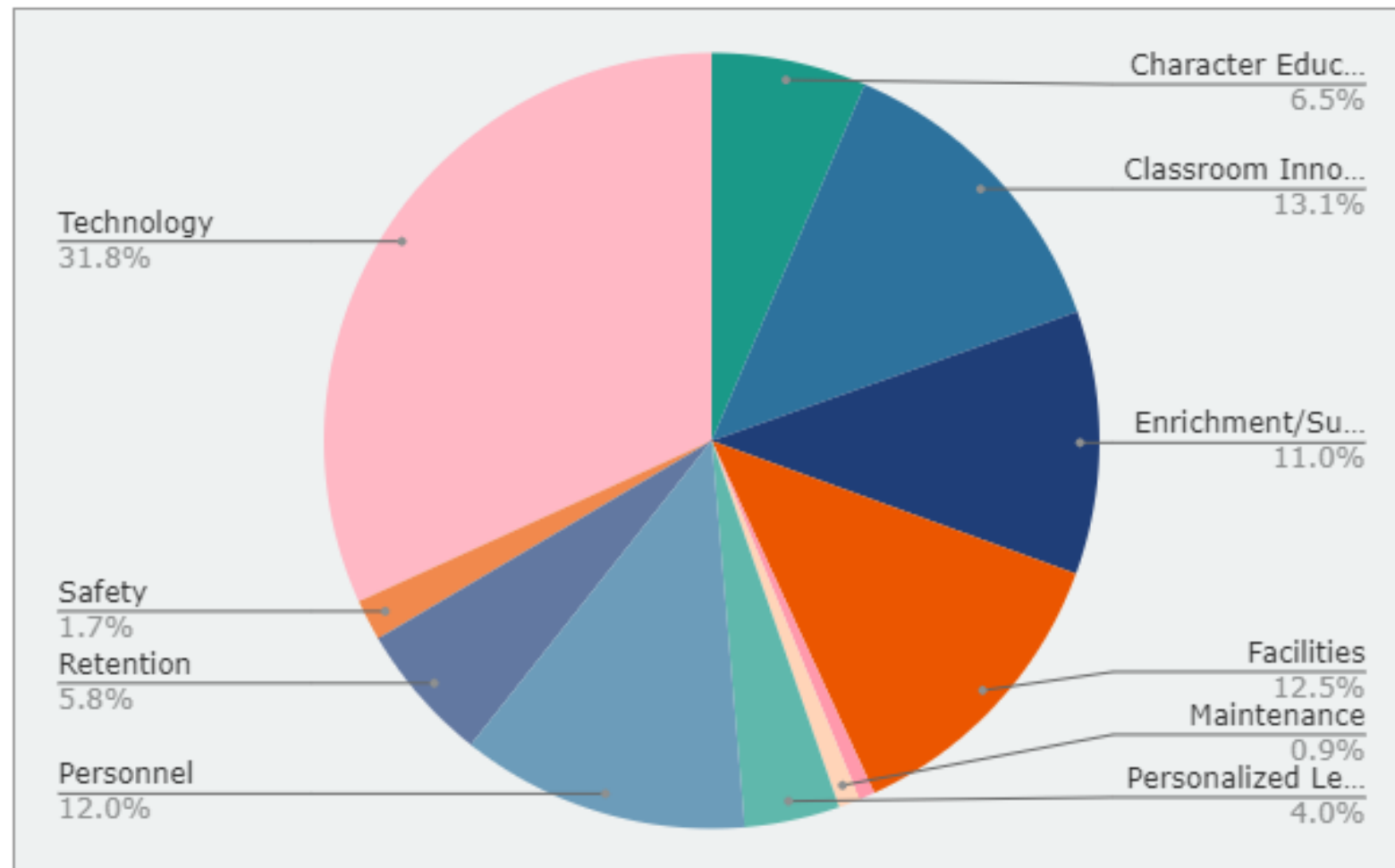




ESSER III: \$10,868,461.55

Obligated & Expended funds March 13, 2020 through September 30, 2024

May be used for pre-award costs dating back to March 13, 2020, so long as ESSER II funds have been expended first.



Character Education: Salary & benefits, training, keynote speaker for staff

Classroom Innovation: Library books, instructional aides, furniture

Enrichment/Summer: Before/after school programs, summer enrichment/learning, supplies and instructional aides

Facilities: HVAC services, engineering design services for heating/cooling systems, contracted custodial services, storage containers

Maintenance: Box truck for deployment of technology and maintenance projects

Personalized Learning: Salary & benefits, training, supplies, instructional materials

Retention: 2% Retention stipend for all staff

Safety: Classroom emergency kits, equipment for nurses, GPS system for buses, visitor/volunteer management system

Technology: 350 Interactive displays for all classrooms, Google licenses, 3,531 computers, 650 tablets, equipment for new devices, digital marquee for sites in need, equipment for elective classes

ESSER III: SET-ASIDE FUNDS

20% Required Set-Aside funding, at least \$2,173,692.31, to address disrupted learning using evidence-based academic strategies

- **Comprehensive Before/After School Program - 14.47%**
 - SY 2023-24: 91 Classes running
 - SY 2022-23: 97 Classes
 - SY 2021-22: Started in February of 2022, 45 classes
- **Other evidence-based interventions - 56.11%**
 - Staff stipends for loss of prep (teaching beyond their contracted periods)
 - Training for staff in Character Education and Personalized Learning (proficiency scales)
 - Staff supporting virtual classes and credit recovery
 - Staff providing interventions for math
- **Summer Enrichment/Learning - 29.42%**
 - 2023: 25 Certified, 20 support staff and approx. 160 students
 - 2022: 32 Certified, 20 support staff and approx. 270 students



WHAT'S IT LOOK LIKE TO SPEND ESSER?

Federal requirements

Following procurement rules and regulations, including the three quote requirement as well as attestations from vendors that they are in good standing with the government.

Set-Asides

Ensuring enough funds are spent in the correct buckets

- Determine types of data needed for each strategy/ program/ intervention/ activity
- What data sources are readily available?
- What other data might be needed?

Category allocations

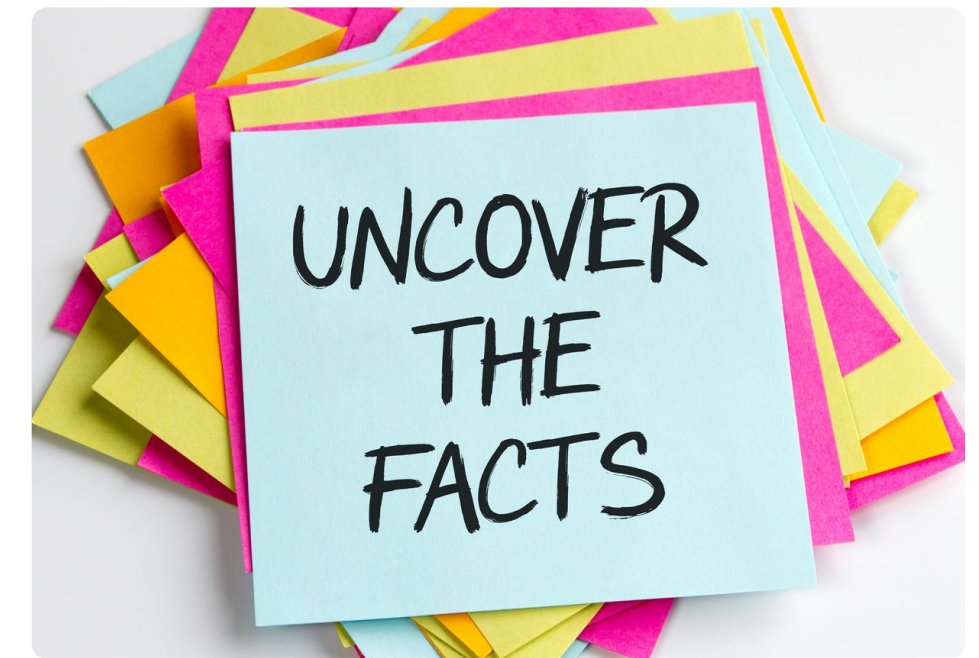
Properly distributing funds amongst the four required data reporting categories

- 11.38% Spent/obligated for Addressing Physical Health & Safety
- 69.58% Spent/obligated for Meeting Students' Academic, Social, Emotional, and Other Needs
- 0% Allocated for Mental Health Supports for Students and Staff due to locale challenges
- 19.05% Spent/obligated toward Operational Continuity and Other Allowed Uses



FUN FACTS

- ESSER II completed on September 30, 2023
 - 100% expended
 - 231 Individual purchases, of which 78 were capital items and required additional supporting documentation
- ESSER III will complete September 30, 2024
 - 70% Expended and 30% obligated
 - 2.91%, or \$316,549.04, allocated to help facilitate the district initiatives for SY 2024-25 should the board vote to pursue; includes upgrades to fields and parking areas at campuses in need, truck rental, and salary for staff to facilitate the move outside of contracted hours
 - 2,322 Purchases to date, of which 1,779 are related to personalized learning furniture
 - Each capital purchase requires individual reconciliation with receiving, processing invoices, providing supporting documentation (approx. 2 hours of work per line item)

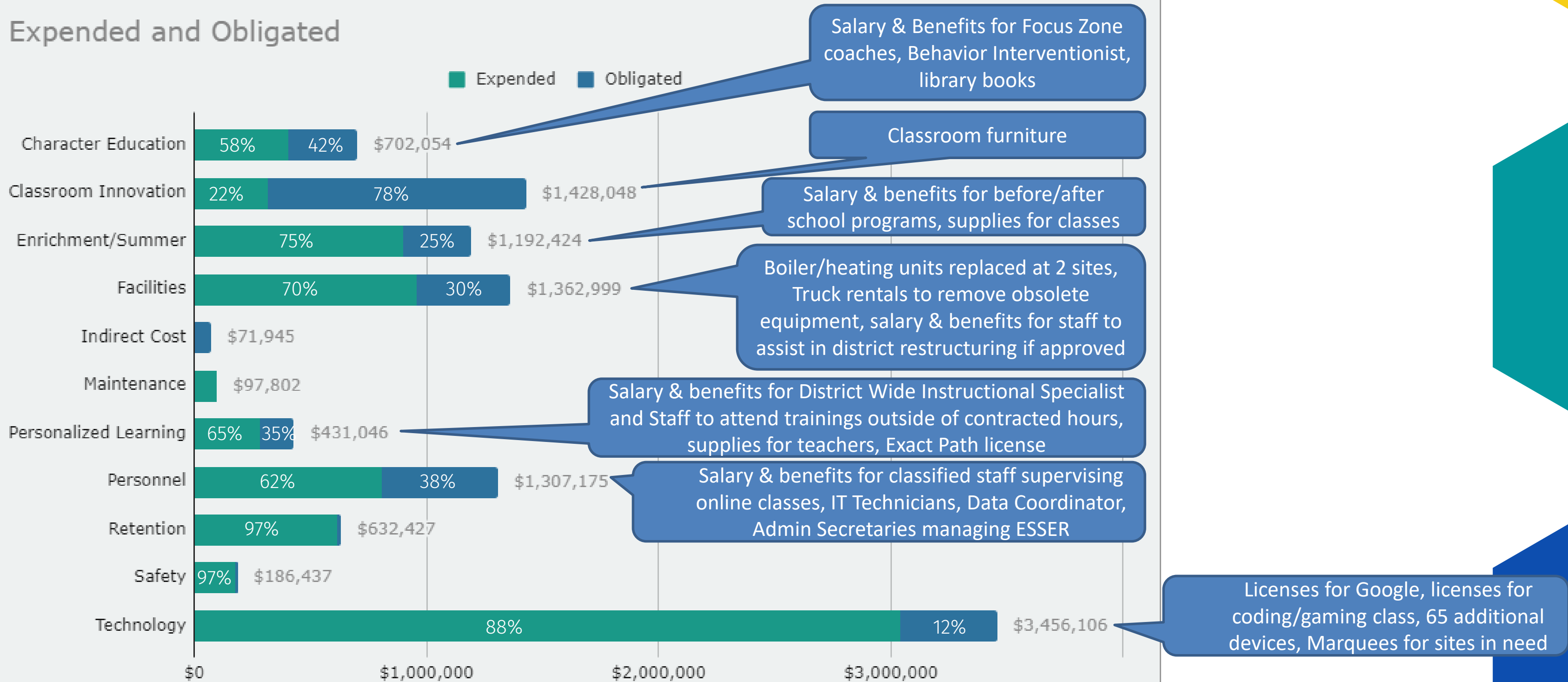


Attention to detail is critical and the utmost priority to ensure these highly flexible funds address local relief, prevention & preparation, and recovery efforts relative to COVID-19.



ESSER III

Expended and Obligated





QUESTIONS?