



FALL 2023

As you drive along FM 1488, you can see all the buildings and development, but there is even more behind the trees and along the FM 1486 and the 249 Tollroad. This year, we have grown approximately 3%, and by October snapshot, we will have over 14,500 students. Each day our campuses continue to enroll new students.

Inside this edition, we have included a map showing all the current and future developments that have been announced. Please take some time to look at the map on our website and understand the growth in our community.

The month of October is National Principals Month. We appreciate our campus principals and their dedication to setting high expectations for our students and educators and creating a great culture here at MISD. We are grateful for their work and their daily impact on our students.

- Dr. Todd Stephens

Elementary Enrollment

Audubon Elementary, the district's ninth elementary campus, is currently under construction and is scheduled to open in August 2024. The district is currently in the process of evaluating and seeking input from parents in regard to updating the elementary boundaries to prepare for the opening of Audubon next school year. The last time MISD changed elementary boundaries was in 2005 with the opening of Ellisor Elementary.

There are many considerations given during this process including:

- Maximizing the efficient and effective use of facilities to reduce overcrowding
- Balancing enrollment
- Providing high-quality instruction
- Planning for future growth

The boundary process includes the following steps:

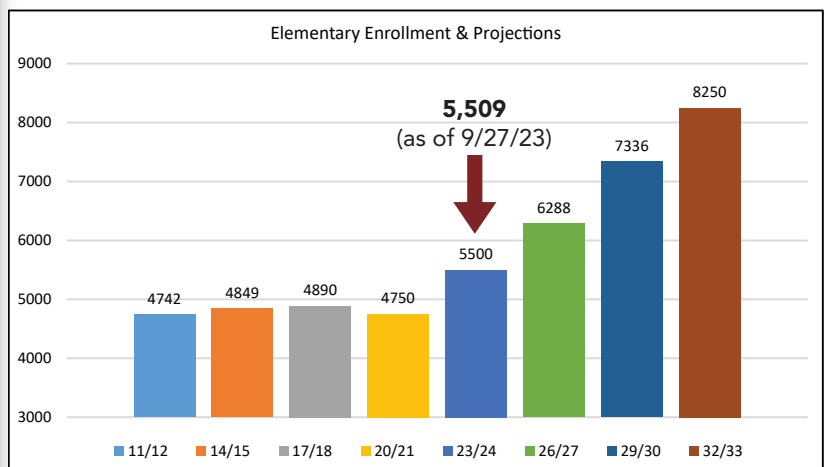
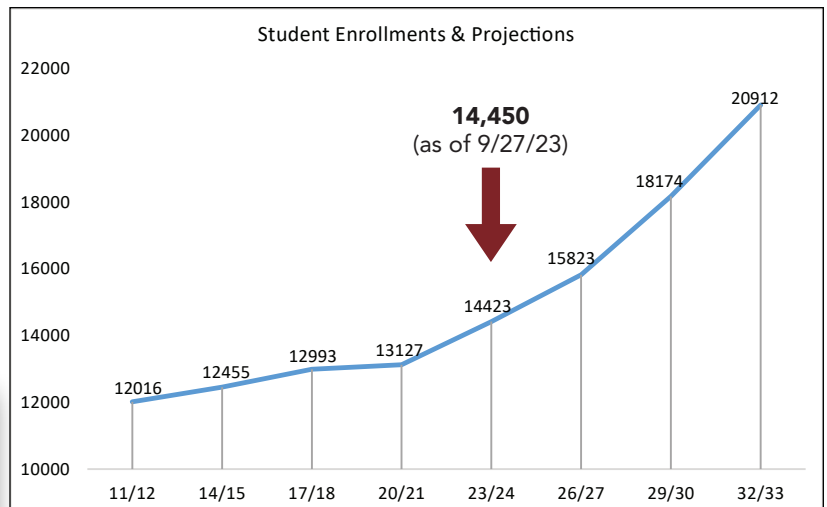
- Collecting parent input
- Evaluating enrollment projections
- Developing proposed boundaries
- Setting up registration systems for new students
- Hiring and balancing staff

MISD has seen consistent student enrollment growth at the elementary level, and this year, we have seen an increase in numbers as projected with the new developments. The opening of Audubon Elementary in August 2024 is great timing to help with the overcrowding at several of our elementary schools.

Looking at MISD student enrollment and projections for the next ten years, we will exceed 20,000, and that is based on a conservative average of 3% growth each year.

Audubon Elementary

- Opening August 2024
- On schedule
- Part of the November 2022 Bond
- Located in the Audubon Development

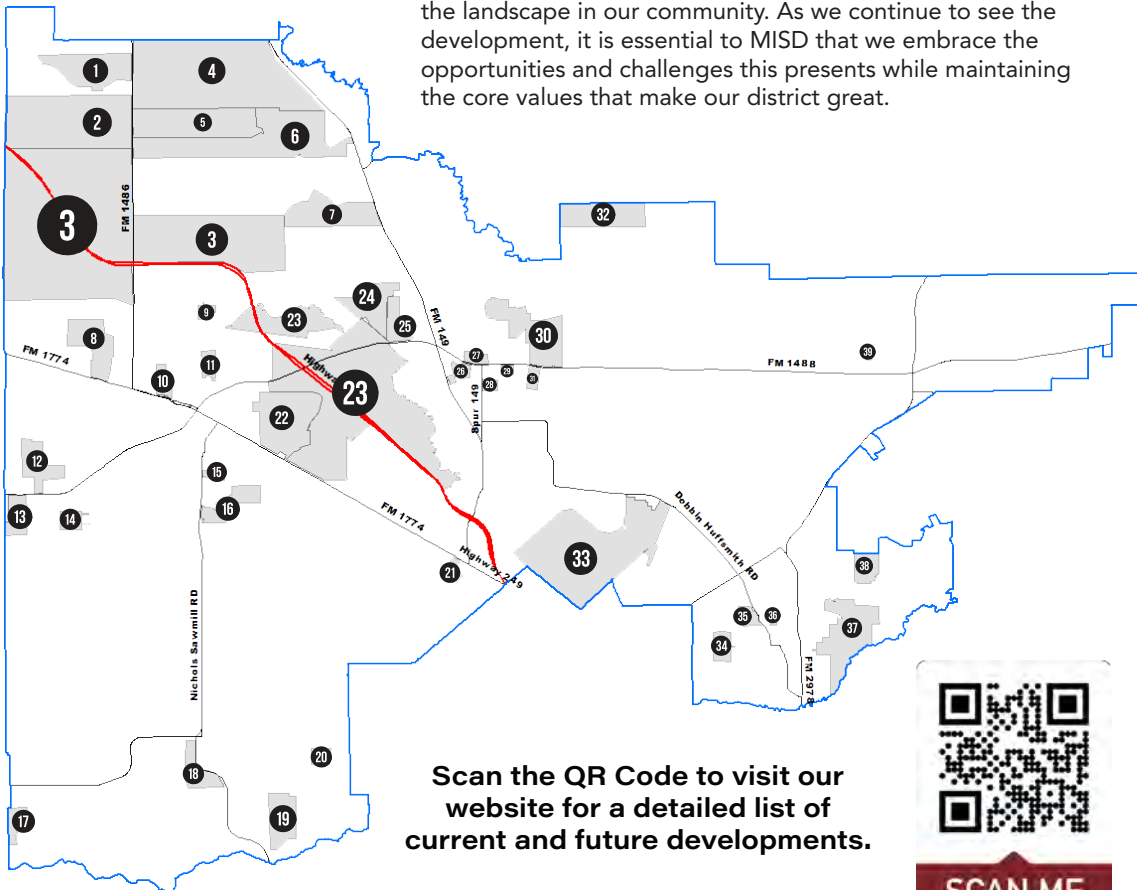


Current & Future Development

The growth in our area has been nothing short of remarkable with frequent business and development announcements becoming a common occurrence. Our district stands out as one of the fastest-growing school districts in the greater Houston area, and the Houston New Home Ranking report for 2nd Quarter 2023 ranks MISD 8th in the area for annual housing starts and 3rd for the amount of future development land available (*Zonda Education*).

Currently, 39 single and multi-family housing projects are in development or have been announced in the MISD attendance zone. With the growth and the new schools being built from the November 2022 Bond, MISD is currently looking at new elementary attendance zone proposals for the 2024-2025 school year.

This sustained growth is poised to show physical changes to the landscape in our community. As we continue to see the development, it is essential to MISD that we embrace the opportunities and challenges this presents while maintaining the core values that make our district great.



Financial Recognitions

MISD Tax Rate
\$0.96
 M&O
 the lowest tax rate in over 20 years

Award of Merit for Purchasing Operations



A distinction that recognizes districts that are committed to professional services in the acquisition of goods and services.

Superior Rating for Financial



Accountability, the highest designation from the School FIRST rating system, since its inception in 2001.



from Texas Comptroller, Glenn Hegar

Transparency Stars awarded for:

Traditional Finances

which recognizes entities for their outstanding efforts in making their spending and revenue information available.

Debt Obligations

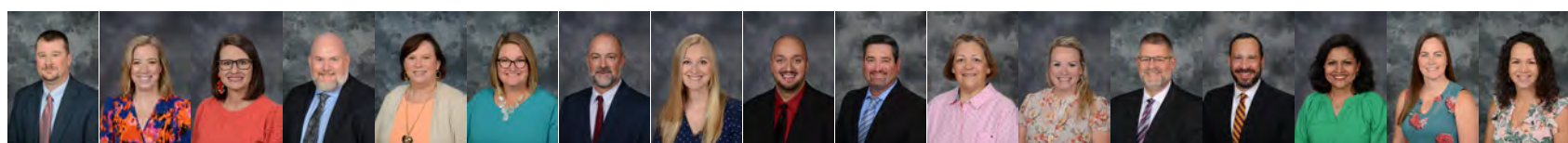
for exemplary efforts in creating financial transparency around public debt.

Contracts & Procurement

show commitment to transparency by making available bids, contracts, & opportunities for vendors

We  our Principals

October is National Principals Month



2023 Livestock Show

This year's exhibitors have truly achieved something remarkable. Their dedication and hard work paid off, as they collectively raised an astounding \$320,000 at the auction. This success would not have been possible without the generous support of our sponsors and community. These funds will undoubtedly have a lasting impact, empowering our students to pursue their passions. Congratulations to our exceptional exhibitors for their record-setting year!

Grand Champion Steer - \$17,500

Cash Wootton, 10th-grade MHS

Grand Champion Swine - \$7,000

Myla Wagoner, 10th-grade MWHS

Grand Champion Lamb - \$5,000

Kylee Gregory, 11th-grade MWHS

Grand Champion Goat - \$5,000

Quincy Walker, 8th-grade MJH

Grand Champion Turkey - \$9,500

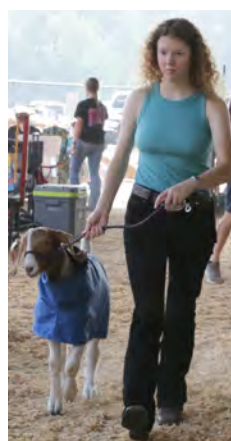
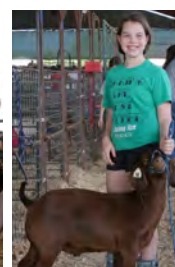
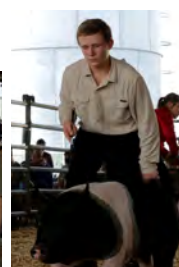
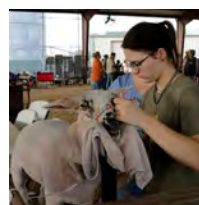
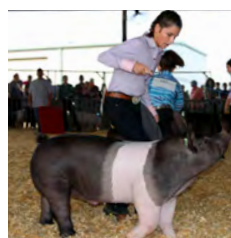
Peyton Woods, 12th-grade MWHS

Grand Champion Broilers - \$9,500

Presley Whitehorn, 4th-grade Lyon ES

Grand Champion Rabbit - \$5,000

Jenna Shaffer, 12th-grade MHS



Magnolia Education Foundation

Star Educator

The Foundation's Star Educator program provides an opportunity for parents, colleagues, and community members to recognize those outstanding MISD staff members who go above and beyond to grow, support, and inspire the students of MISD.

Nominations are now open and the process is simple! For a \$20 donation to the Foundation, every nominee is honored and recognized with a congratulatory certificate, special item from the Foundation and title sponsor, Sonic; recognition in the Community Impact Newspaper, and on social media.

Your donation helps fund many successful grants and scholarships benefiting the staff and students of MISD.

Star Educator nominations close on November 28, 2023, and honorees will be announced before the Christmas break. Scan the QR code to make your nominations today!



Nominate today!

Upcoming Events



Follow MEF on social media for more!



@magnoliaedfoundation



@magnoliamef

GET CONNECTED

Stay connected with Magnolia ISD through email, text services, and social media.

<https://bit.ly/MISDStayConnected>



www.magnoliaisd.org



@MAGNOLIAISD



@MAGNOLIAISD



@MAGNOLIAISD



@MAGNOLIAISD