



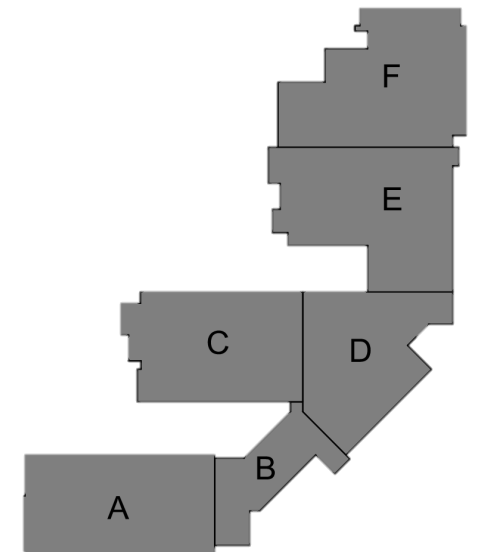
# Mary E. Britton Middle School

## ➤ Completed Work:

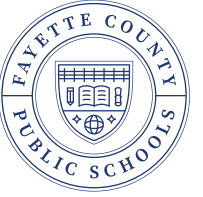
- Complete Hollow Core (Lack 4 panels to set. Panels on Site)
- Topping Slab Area A Platform
- ICF – Area E Cafeteria, Area C
- Continuing CMU Various Areas
- Continue Zone Piping Install at Geothermal Field
- Continue Brick At Gym and Locker Room
- KY American Water Domestic and Fire Main Continuing
- Delivered Generator
- Continue MEP and Fire Rough In Area A and Area C

## ➤ Upcoming Work/Look Ahead:

- Topping Slab at Area C
- Grout remaining hollow core plank
- Complete Stairwell ICF Wall A and C
- Start ICF at Area E
- Continue Zone Pipe Installation at Geothermal
- Set Units on Mechanical platforms
- Continue MEP and Sprinkler in wall and overhead Rough In
- Complete Ky American Water domestic and fire main installation
- Continue winterization efforts Area B and Area C



# Mary E. Britton Middle School



Area A – CMU Fire Wall Complete



Week Ending December 15, 2023



# Mary E. Britton Middle School

Area A – End Wall ICF at Stair Continues



Week Ending December 15, 2023



# Mary E. Britton Middle School



## Area A – Restroom Soffits Framing



Week Ending December 15, 2023

# Mary E. Britton Middle School



## Area A – Steel and Cabling Install



Week Ending December 15, 2023



# Mary E. Britton Middle School



## Area B – Entry Vestibule CMU Shared



Week Ending December 15, 2023

# Mary E. Britton Middle School



Area C – Penthouse Topping Poured



Week Ending December 15, 2023

# Mary E. Britton Middle School



Area C – Stala Framing at Louvers Complete



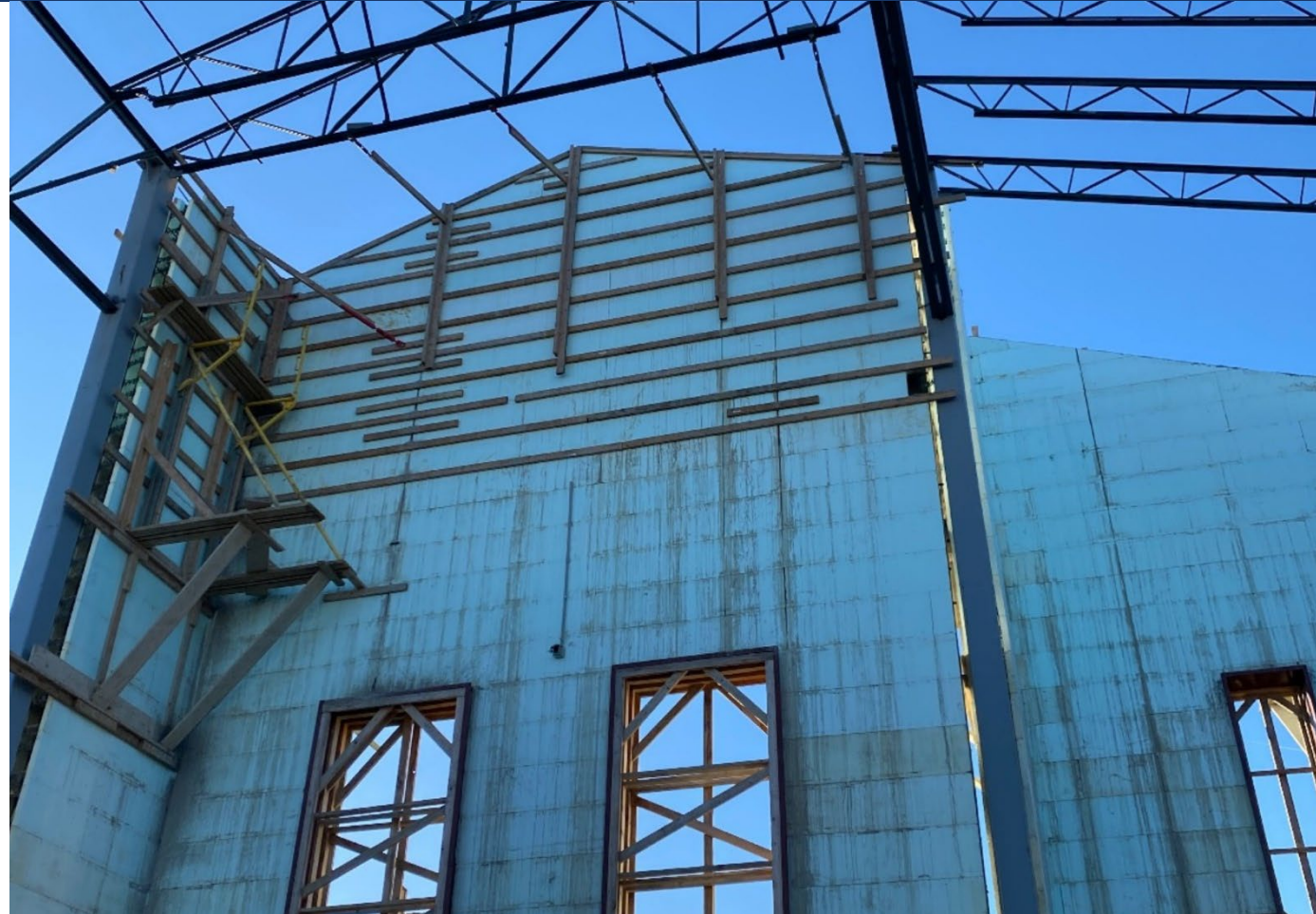
Week Ending December 15, 2023



# Mary E. Britton Middle School



Area E – Cafeteria End Wall ICF Complete



Week Ending December 15, 2023