

WMS Paw Print 2023.12.08

Bringing you the middle school scoop...

[CLICK HERE: 2023 Proposed Instructional Bond VOTE 12/12/23](#)

DON'T FORGET THE UPCOMING VOTE ON THE INSTRUCTIONAL BOND ON DECEMBER 12th!

Principal's Message

December 8, 2023

Congratulations to our 7th and 8th Grade Performers for a great Winter Concert. Thank you to Ms. Sica and Mr. Appel for building such remarkable collaboration skills in our students, and even more importantly, bringing us together as a community to celebrate the arts.



I am always touched by the giving nature of our community. From the daily acts of kindness that are witnessed throughout Westlake Middle School all the way to students leading toy drives and fundraising efforts. This week, a group of bright and positive 6th Graders have been using their creative skills to liven up the hallways with gifts of 3-dimensional snowflakes. I was touched to return to my office and find one had been delivered to me. Just in time for the falling of the first real snowflakes of the season. Thank you!

KEEP THE PAW PRINT BOOKMARKED!

Once you have access to the newsletter the link will update automatically, so go back at any time to see the latest version.

CLICK HERE: Older Versions Of The Paw Print Are Archived On Our Webpage

A glance at the upcoming week...

Week of 12/11 - 12/15

Monday - Day E

- 2:15-3:15 pm: Peer Tutoring (Math)
- 2:45-4:00 pm: Science Olympiad
- 3:15-5:00 pm: Musical Elf Jr Acting (Select Group)

Weekly
Bulletin

Tuesday - Day F - 6th Grade Winter Concert

- 2:15-3:15 pm: Peer Tutoring (Chess)
- 2:30-3:15 pm: Meistersingers
- 2:30-3:30 pm: Crew Meeting Elf Jr.
- 2:45-4:00 pm: Science Olympiad

Wednesday - Day A

- 2:15-3:15 pm: Peer Tutoring (ELA)
- 2:20-3:20 pm: Environmental Club
- 2:30-3:30 pm: Jazz Band
- 2:45-3:15 pm: Student Council
- 2:45-4:00 pm: Science Olympiad
- 3:00-4:00 pm: Elf Jr. Dance Rehearsal (Select Group)

Thursday - Day B

- 2:15-3:15 pm: Peer Tutoring (Social Studies)
- 2:30-3:15 pm: Yearbook Meeting
- 2:30-3:30 pm: Musical Elf Jr. (Select Group)
- 2:30-3:30 pm: Crew Meeting Elf Jr.
- 3:30-5:00 pm: Musical Elf Jr. Acting (Select Group)

Friday - Day C

- 2:30-3:30 pm: Art Club
- 3:15-5:00 pm: Elf Jr. Acting Rehearsal (Select Group)

Upcoming Dates:

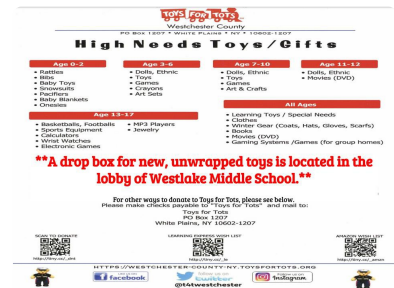
- December 22nd: Early Dismissal @ 11:15 am

- December 25 - January 2: Winter Recess - School Closed

Important New Information, Upcoming Events, and Reminders

Toys For Tots

A drop box for new, unwrapped toys is located in the lobby of Westlake Middle School.



WMS PTA Standard Membership Raffle

Win a \$50 gift card to Wood & Fire in Pleasantville. To be entered to win all you need to do is sign up to be a member of the WMS PTA Standard level or make an open donation amount of \$25 minimum. All you need to do is join the WMS PTA (if you haven't already) for a chance to win the gift card.



All WMS PTA standard memberships or open donation amount of \$25 minimum collected by December 31, 2023 qualify for the raffle drawing. Please follow this link to become a member or to make a donation: <https://wmspta18-19.memberhub.com/store>

The winner will be announced January 5th, 2024!


Joining the WMS PTA helps us offer educational and cultural programs to students. Membership dues support programs such as cultural arts, field days and ice cream socials, grants for Wellness Day, teacher and staff appreciation, additional supplies and resources for the classrooms, class trips/scholarships, and Woo Hoo Welcome, to name a few.

DON'T MISS OUT on the WMS PTA Membership Raffle! Join Today!

December 12th at 7:00 p.m. - 6th Grade Concert with Jazz Band and Meistersingers

Arrival Times/Locations:

- Meistersingers - 6:30PM, HS Choir Room
- Jazz Band - 6:30PM, HS Band Room
- 6th Grade Band - 7:15PM, HS Band Room
- 6th Grade Chorus - 7:15PM, HS Far Cafeteria



It's Concert Time!

Dear Parents of Students of Band and Chorus Students,

Season's Greetings!! The Verdale Middle School Winter Concerts are quickly approaching. Our ensembles are hard at work and looking forward to stellar performances!! Below are the concert dates and important information regarding our performances.

7th and 8th Grade Concert
 Thursday, December 7th ~ 7 PM ~ John S. Whearty Theater
 *Please note, Jazz Band and Meistersingers will only be performing at the 6th grade concert on Tuesday, December 12th.

Arrival Times/Locations:

- 8th Grade Chorus - 6:15PM, HS Cafeteria
- 7th and 8th Grade Band - 6:15PM, HS Band Room
- 7th Grade Chorus - 7:15PM, HS Cafeteria

6th Grade Concert with Jazz Band and Meistersingers
 Tuesday, December 12th ~ 7 PM ~ John S. Whearty Theater

Arrival Times/Locations:

- Meistersingers - 6:30PM, HS Choir Room
- Jazz Band - 6:30PM, HS Band Room
- 6th Grade Band - 7:15PM, HS Band Room
- 7th Grade Chorus - 7:15PM, HS Cafeteria

Concert dress: All performers are asked to wear white on the top and black on the bottom. A white collared dress shirt, white short-sleeved polo shirt OR any white dressy blouse-type shirt is perfect on top. All outfits must meet the school dress code.

Parent Waiting Area: Upon arrival, parents will be directed to sit in the auditorium or the major cafeteria until your child's portion of the concert. While waiting, please do not gather in the lobby, as the sound makes its way into the theater and is highly disruptive to the students' performance.

If you have any questions, please feel free to contact Mr. Appel or Mrs. Sica. We have a great program in store and look forward to performing for you!

Musically Yours,

Benjamin Appel and Erin Sica
 VMS Music Teachers

December 13th at 6:00 p.m. - PTA Book Study

We had our first PTA Book Study session this week and will be sharing our takeaways with you and encouraging you to join the next session.

Our goal is to provide some concrete strategies for approaching the middle school issues that we all face as parents. It is also very powerful to hear the challenges that others face and build partnerships to meet the challenges and get to all the good stuff that comes with having kids.



Principal's Leadership Group - Snapshots of What's Happening

7th and 8th Grade Winter Concert

Simply fantastic! The on their faces and the smiles brought to our faces by our enthusiastic performers said it all.

Thank you Ms. Sica!

Thank you Mr. Appel!



Life Science Coming Alive

A team of 8th Graders, led by Ms. C. Iannone is maintaining our hydroponic towers. They are learning to grow plants indoors with no soil or direct sunlight. As they learn to germinate seeds, balance the pH of the water, and harvest what is grown our 8th Grade Leaders will be teaching the younger grades how to keep this process going from year to year. We are up to 5 grow towers producing greens.



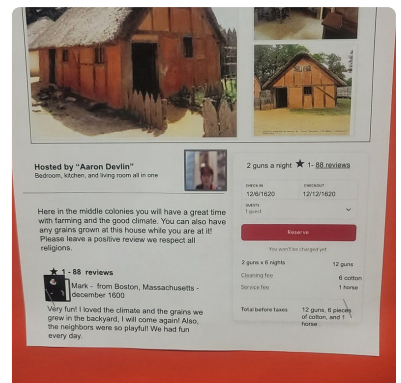
Healthy Holidays

There are plenty of sweets, candy, and chocolate being shared this holiday season. Our grow tower harvesters are also keeping us healthy for the holidays, sharing their first harvest of kale and buttercrunch with Dr. G.



Colonial Era Airbnb

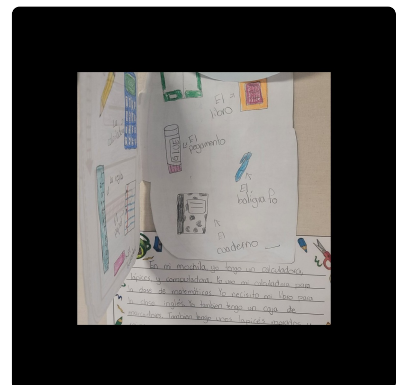
We spotted some interesting Airbnb advertisements from the colonial era. Thanks for the creative representations of colonial life. 5-Star Review!



Bilingual Backpack

En mi mochila...

Students are prepared in two languages to organize their backpacks. We will be facilitating and encouraging an end of year cleanout of backpacks and lockers. Students are encouraged to keep unnecessary papers and materials in their locker or at home.



Save The Dates



Westlake Wildcat Sports

Please check the Westlake Wildcats Sports Calendar for ANY updates or changes.

CALENDAR: <http://www.westlakewildcats.org/calendar>

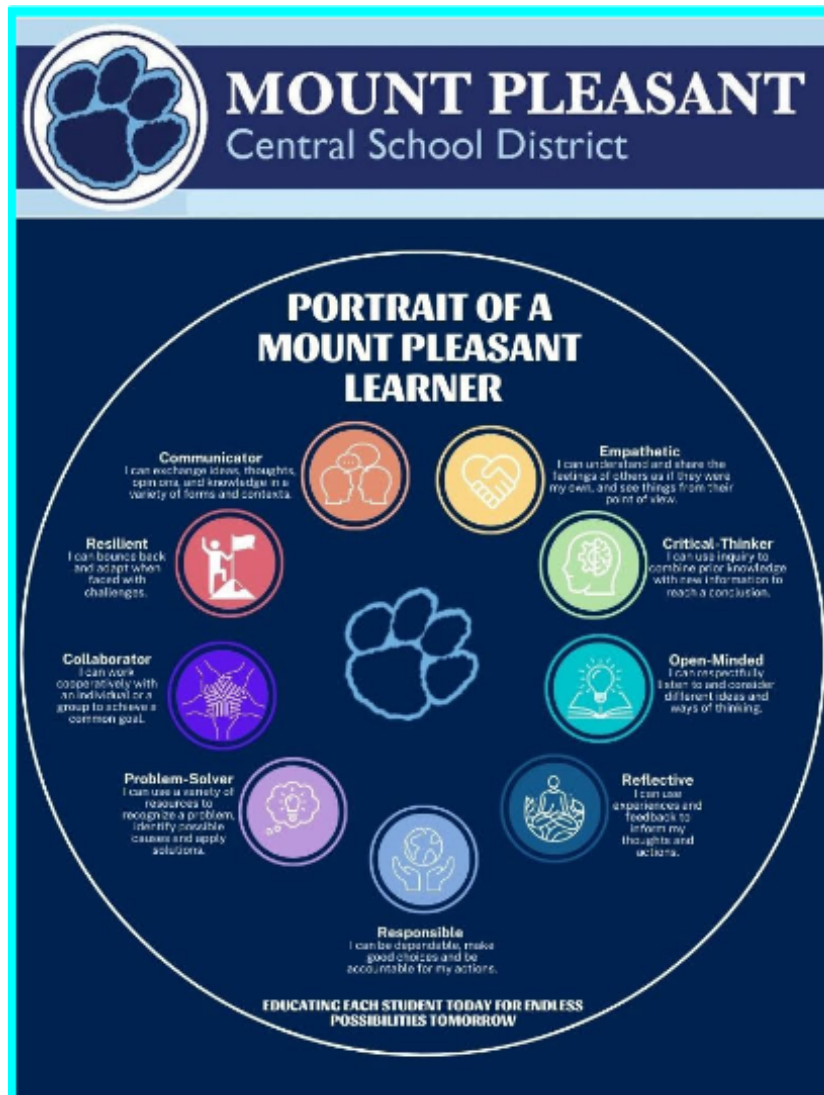
Athletic Office contacts:

Shawn Baumann, Athletic Director at sbaumann@mtplcsd.org

Maria DiNota, Athletic Secretary at mdinota@mtplcsd.org



Westlake Middle School Website



Anthony Mungioli

Anthony is using Smore to create beautiful newsletters