

# National Public Seating



Your One-Stop Source  
for Quick Ship,  
Institutional Grade  
Furniture

PRODUCT  
CATALOG  
SUPPLEMENT  
FOR 2017

THIS

## 2017 NPS® CATALOG SUPPLEMENT

IS DESIGNED FOR USE WITH THE  
**2015/2016 NPS® FULL LINE CATALOG**  
AND CONTAINS MANY NEW PRODUCTS  
AS WELL AS EXCITING UPGRADES  
TO EXISTING ONES.

8800 Series **PG 2**



9361-BT  
**PG 3**



DY Series  
**PG 4**



DYMU  
**PG 5**



6400-10  
Series  
**PG 6**



Café Time  
**PG 7**



Commercialine  
**PG 8**





products meet or exceed applicable ANS/BIFMA standards



◀ SLEEK POLYPROPYLENE PLASTIC BACK AND SEAT DESIGN PROVIDES ERGONOMIC SUPPORT

MODEL #8810-11-10 SHOWN

▲ SEATING IN COMFORTABLE, DURABLE POLY

▲ BUILT-IN GANGERS FOR MULTIPLE CHAIR SETUP

New from NPS®  
*best selling*  
 The Cafetorium Chair  
 now available  
 with a Poly Seat!

3 IN-STOCK COLORS

#8810-11-10  
 BLACK  
 ON CHROME

#8804-11-04  
 NAVY BLUE  
 ON CHROME

#8818-11-18  
 BURGUNDY  
 ON CHROME

Introducing...

#8800 Series Poly Seat Cafetorium Chair

The more durable, more cleanable solution for your cafeteria and food service environment.



MODEL #8810-11-10 SHOWN, STACKED WITH #8710-11-10

Optional Cradle-style Dolly Available



MODEL #DY87

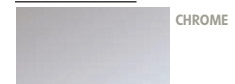
- DIMENSIONS - 28" L X 18 1/2" W X 26" H
- WEIGHT - 12 1/2 LBS.
- WEIGHT CAPACITY - 350 LBS.
- 7/8" SQUARE TUBING
- 7/8" OD ROUND TUBING
- FRAME FINISH - GREY POWDER COATING

▲ STORAGE OR TRANSPORT - up to 35 chairs high!

PLASTIC SEAT & BACK



CHAIR FRAME



Chair Dimensions:

WIDTH	20"
DEPTH	19 1/4"
SEAT HEIGHT	17 1/4"
BACK HEIGHT	30 3/4"

# NEW FABRIC / SEATING COMBO FOR 2017:

Chocolatier Fabric on a Black Santex Powder Coated Frame for a Professional yet Luxurious Look. Deep chocolate tones in a tweed style create a deep rich look.

USE WITH  
CHAIR TRUCK  
#DY81 - DY9000

BIFMA  
INTERNATIONAL

ANSI

products meet  
or exceed applicable  
ANSI/BIFMA standards

MODEL  
9361-BT  
SHOWN



2" OF HIGH DENSITY  
GRADE A FOAM

STACK BARS

STURDY 3/4"  
SQUARE FRAME

H BRACE

**300lb.  
weight  
capacity!**



**CAL-117  
RATED**

FABRIC/FRAME COMBOS

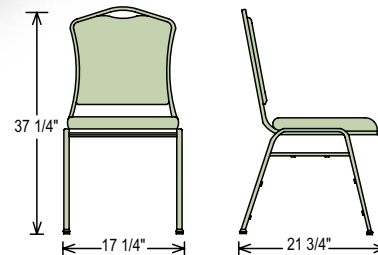


CHOOSE FROM  
**3 Unique Color  
Combinations**

OR

**Mix & Match  
to make your  
own Combo**

AVAILABLE ACCESSORIES



USE WITH:

**Model #DY9000**  
Stacking  
Chair Dolly  
CAPACITY: HOLDS 8-10  
STACK CHAIRS (9300 SERIES)

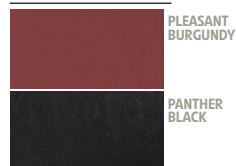
**Model #DY81**  
Stacking Chair Dolly  
CAPACITY: HOLDS 8-10  
STACK CHAIRS (9300 SERIES)



FABRIC UPHOLSTERY PATTERN



VINYL UPHOLSTERY



CHAIR FRAMES





## ANNOUNCING FOR 2017

### our most comprehensive Dolly Value Upgrade ever – at

no extra cost. With evolving needs in institutions nationwide, NPS® has chosen to relaunch four of its most popular Chair & Table Dollies, by including numerous value-added features your customers will love. Model #'s remain the same, but effective Jan. 1, 2017, your customers will appreciate these added benefits.

### DY9000 Stack Chair Dolly



**NEW!** NOW INCLUDES CONVENIENTLY HOOKED-ON BUNGEE CORD TO SECURE THE CHAIRS WHEN STACKED ON DOLLY

*Eliminates any risk of chairs toppling!*



Now stores up to 42 Folding Chairs and 12 Folding Tables

### 42-8 Combination Folding Chair / Table Truck

*More Functional than Ever, with your Safety in Mind!*

**NEW!** INCLUDED BUNGEE CORDS FOR STABILITY & SAFETY WHEN YOUR DOLLY TRUCK IS FULLY LOADED.

*Simply pull locking cord around your tables and lock in place. Roll easily & safely!*

### DY35 • DY50 Standing Style Folding Chair Dollies

*Now Easier to Use Than Ever!*



*Strategically placed handle positions lock chairs in almost any spot on the dolly!*

**NEW!** ADDITIONAL HANDLE BAR SOCKETS ALLOW SECURE PLACEMENT OF CHAIRS IN ALMOST ANY QUANTITY YOU CHOOSE



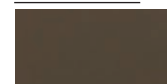
**NEW!** INCLUDED HANDLE MAKES IT A BREEZE TO PUSH EVEN WHEN FULLY LOADED WITH UP TO 10 ROUND FOLDING TABLES

### DY60R Folding Table Dollies

*with the Upgrade You've Been Waiting for!*

*Smartly designed handle angles upwards so there's no need to bend down while rolling your tables away.*

FRAME COLOR



DARK BROWN



**INTRODUCING...**  
The **Multi-Use Dolly Cart**  
that allows for transport  
& storage of round or  
rectangular folding  
tables.

Specially designed and upgraded beveled dark brown stained plywood base can safely support both rounds and rectangulars or a combination thereof.

Strategically positioned handle is large enough to accommodate even 8' length tables, yet acts as a convenient handhold when transporting your tables.

*The DYMU is another innovative yet affordable material handling solution from NPS®.*

**DIMENSIONS: 31¼"H X 27¾"W X 47½"L**



←  
**Safely support both rounds and rectangulars, or a combination thereof**

STRATEGICALLY POSITIONED HANDLE IS LARGE ENOUGH TO ACCOMMODATE EVEN 8' LENGTH TABLES, YET ACTS AS A CONVENIENT HANDHOLD WHEN TRANSPORTING YOUR TABLES

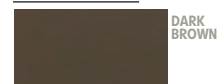
SPECIALLY DESIGNED & UPGRADED BEVELED DARK BROWN STAINED PLYWOOD BASE

**FOR USE WITH:**



**Rectangular & Round Tables**

**FRAME COLOR**





The Aesthetically Pleasing & Functional New Black Stools are Available in all 4 Variations:

- BASIC
- WITH BACKREST
- WITH ADJUSTABLE LEGS
- WITH BACKREST AND ADJUSTABLE LEGS

## EXPANDED STOOL LINE

now includes **Series 6400-10**, Black Vinyl-Padded Stools on a matching black frame!

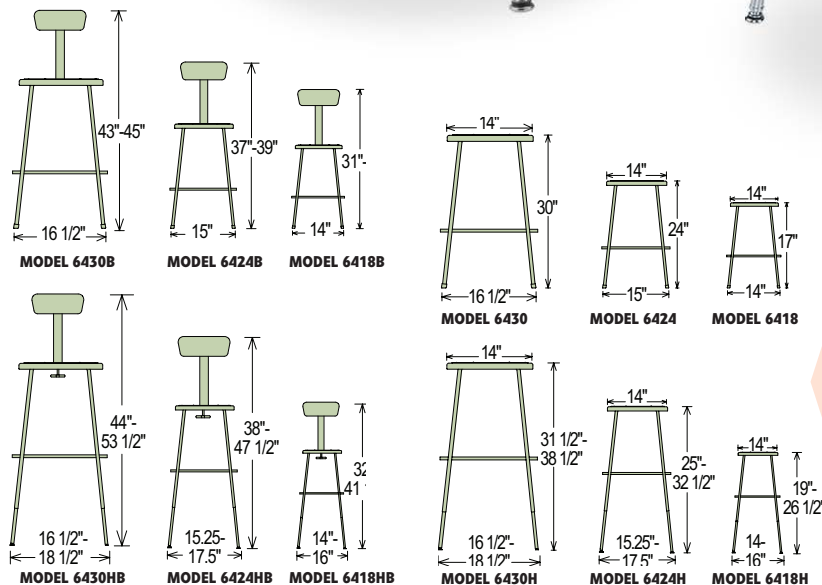


products meet or exceed applicable ANSI/BIFMA standards



Due to the unprecedented popularity of the NPS® black powder coated frame Masonite Hardboard Lab Stools, NPS® has expanded its stool lines to now include black vinyl padded stools on a matching black frame – Series 6400-10. Including 2 heights; 18” and 24”, as well as optional backrests and adjustable legs, this new addition to our growing lab stool line is both aesthetically pleasing and functional. Gorgeous & heavy duty thick vinyl pads are mounted to our acclaimed four spot weld frame to create a new solution for demanding lab environments in an attractive color option.

**300lb. weight capacity!**



**Original Grey Stools come in 3 convenient sizes:**

- **18"** for use with your **30"** table
- **24"** for use with your **36"** table
- **30"** for use with your **42"** table

**or use adjustable legs for alternate height options**

*New Black Stools come in the 18" and 24" heights, as well as with Height Adjustable Legs*

# Café Time

— BY NPS® —

*the industry's best value for an all-inclusive café table and stool.*

**You have asked, and we have answered!**

All Café Time tables now include two feet options, an adjustable glide or — **NEW** — a double wheel hooded caster in matching Charcoal Slate/Grey. Use with glides when tables are kept stationary or install included caster wheels for rolling around such as for nesting and storage.

Every convenience you've ever wanted, built into a gorgeous charcoal slate colored 1-3/8" thick plastic top, mounted on a matching silver square frame.

Use as a café table in standard 30-inch table height, or effortlessly raise to 42-inch bistro height, with a simple pull of the concealed pneumatic lever. 36"W x 36"D with contoured corner edges, they are perfect for your break room, cafeteria, or lunchroom. Lightweight, scratch resistant and durable, the attractive top will complement any décor, and the sleek contemporary legs will provide a perfect airy look. Tilting latch sets table top into vertical position for compact storage, while contemporary styled legs allow nesting with adjacent tables. Matching charcoal slate colored bistro height stools feature ergonomically curved plastic seats and backs mounted on a sleek 1-1/8" tubular steel frame, with silver tone powder coated paint. Rubber floor friendly glides will protect floors.



**Café Time Table**

MODEL #CTT3042 SHOWN

**Café Time Stool**

MODEL #CTS30 SHOWN

ERGONOMICALLY CURVED PLASTIC SEATS AND BACKS

SCRATCH RESISTANT ATTRACTIVE TABLETOP AND CHAIR SEATS & BACKS

Use as a 42" Bistro Table or 30" Standard Table

A SIMPLE PULL OF THE CONCEALED PNEUMATIC LEVER MAKES FOR EFFORTLESS RAISING AND LOWERING

TABLETOP SETS INTO VERTICAL POSITION FOR COMPACT STORAGE

LEGS ARE STYLED TO ALLOW NESTING WITH ADJACENT TABLES WITH OR WITHOUT CASTERS

RUBBER FLOOR FRIENDLY GLIDES TO PROTECT FLOORS

**Series #CT**

TABLETOP / SEAT COLOR



FRAME COLOR



*Perfect for your Break Room, Cafeteria, or Lunchroom*

**NEW FOR 2017**  
Café Time Tables with Casters

Optional Casters now available for Café Time Tables

NPS®, your source for the highest quality **Folding Chairs & Tables** is proud to announce the addition of its **Commercialine Furniture** program, suited for most commercial environments where a **quality yet affordable solution** is called for.

**ANNOUNCING A NEW FOCUSED APPROACH  
concentrating on bestselling color options.**

Choose from  
**Beige · Grey · Black**  
in  
**Steel · Vinyl Padded**

All other less popular choices are discontinued in favor of these bestselling choices.



Vinyl Padded ▶

#952



#951

#950

All-Steel ▼



#910

#902

#901

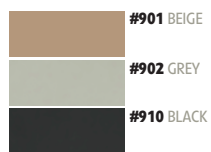
**NEW  
COLORS  
FOR  
2017**

**250lb.  
weight  
capacity**

*CL Folding Chairs  
are not a  
part of the  
BodyBuilder Line*

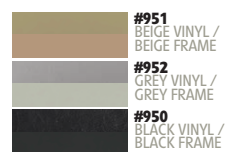
**All-Steel**

COLOR OPTIONS



**Vinyl Padded**

FABRIC / FRAME COMBINATIONS



**APPROPRIATE FOR:**  
**Training & Conference Rooms**  
**Breakrooms**  
**Bingo Halls**  
**Elks Lodges**

**Commercialine Folding Chairs** are available in All-Steel or Vinyl Padded; in two colors each.