



**SOFT
LINE**

HUGO CHAIR

WWW.BCILIBRARIES.COM



HUGO



Lounge chair
Art. no.: 2-199

Description:

Snug and charming

HUGO is a snug lounge chair created for a modern lifestyle and made of high-quality foam and fabric. With character and charm HUGO is the obvious choice for the design-conscious – as a standalone chair in the private home or as a part of a lounge setting in a public environment.

Year of design: 2009

Function:

Comfortable lounging.

The chair can be moved easily as needed.

Form of the chair gives the possibility for a round-formed arrangement and makes it less space demanding.

A great number of colours can be combined.

A removable cover can be dry-cleaned or changed.

Features:

Modern lounge chair.

To a more design-conscious decoration.

Slow living lounge.

Decorative.

Comfortable and high quality.

Form allows a less space demanding arrangement.

The chair is easy to move as needed.

A good alternative e.g. to a sack chair.

Two-coloured combination as individually needed.

Different fabric qualities and many colours provided.

A removable cover can be dry-cleaned or changed.

Design: busk+hertzog

Architects specialized in furniture / product design. The studio, today located in London UK, was established year 2000 by Flemming Busk (1967), architect MAA and designer MDD, and Stephan B. Hertzog (1969), designer MDD. busk+hertzog have received more than 40 international design awards for their works and their designs are a.o. represented at the Royal House of Norway, Danish Broadcast Cooperation, CNN, Chivas Regal, the Norwegian Embassy in Helsinki, the Carnegie Trust, and "The Modern" (Restaurant), Museum of Modern Art, New York.

Flemming Busk has worked with SOFTLINE since 1999, where he won our idea competition with his simple yet brilliant sofa bed SLEEP. Has also specially designed among other things the HELLO chair for the world famous pop star Kylie Minogue.

HUGO

Dimensions (cm):

	Lounge chair	
Art. No.:	2-199	
Length:	86	33.9"
Depth:	108	42.5"
Height:	78	30.7"
Seat Height:	40	15.7"
Seat Depth:	59	23.2"
Colli:	1	1
Packing Dimensions:	105x85x77.5	41"x34"x31"
Volume:	0.69 m ³	
Weight (net):	16.70 kg	37 lbs
Weight (gross):	17.35 kg	38 lbs

Additional Information:

Packing

160 µm PE plastic foil.

Assembly

None.

Cleaning

Brushing or vacuum-cleaning.

A removable cover can be dry-cleaned or changed.

Upholstery

Cold cure foam 35 kg/m³ + 200 g. polyester fibre.

Frame

Inner / invisible steel.



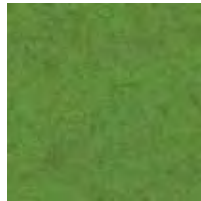
SOFTLINE SEATING

Felt Colors

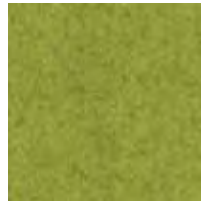
WWW.BCILIBRARIES.COM



579



*848



*855



*847



624



588



622



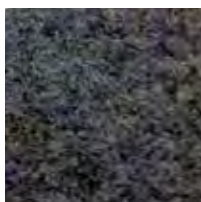
581



*858



582



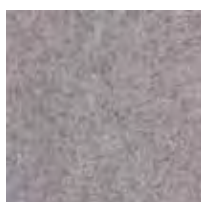
*846



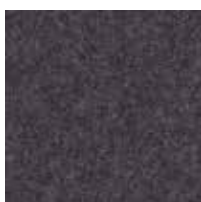
629



*859



*620



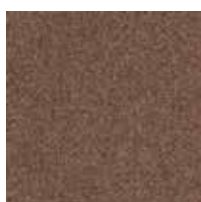
*623



*610



*619



*849



*635



636

Composition: 80% Wool, 20% Polyamide (* 70% Wool, 25% Polyamide, 3% Acrylic, 2% Polyester)

SOFTLINE SEATING

Valencia Colors

WWW.BCILIBRARIES.COM



258



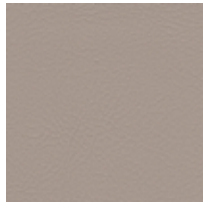
265



266



267



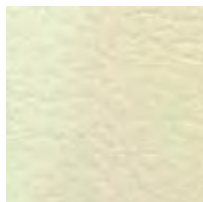
268



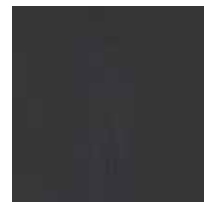
264



269



262



259



HUGO

WWW.BCILIBRARIES.COM

HUGO

Snug and charming

Hugo is a snug lounge chair created for a modern lifestyle and made of high-quality foam and fabric. With character and charm, Hugo is the obvious choice for the design-conscious – as a standalone chair in a private space or as part of a lounge setting in a public library.



HUGO Lounge Chair
Art. no.: 2-199





 BCI

