



SLIMLINE SHELVING SYSTEM

WWW.BCILIBRARIES.COM



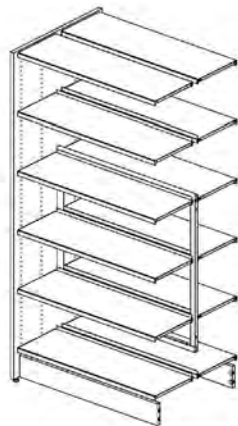
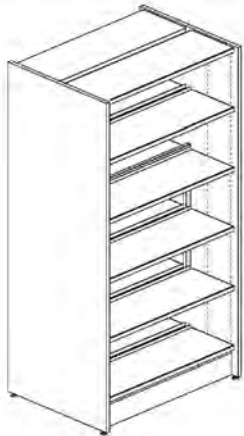


SLIMLINE SHELVING SYSTEM

WWW.BCILIBRARIES.COM

DETAILS

Slimline offers one of the most functional and flexible shelving designs in the market. Shelving bays may be combined into a shelving system, using sections and shelves for easy rearrangement, expansion, and add-ons, without expert assistance. The two wood end panels of the starter section are smooth and veneered on the outside, with holes for wooden or steel shelves on the inside. The inner upright panel has holes on both sides. The shelving bays are joined using either an open steel frame or a wooden back. This solution makes it easy to add or remove individual bays without disassembling the other bays.

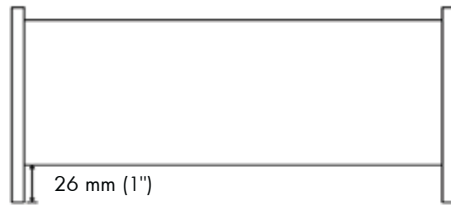


SLIMLINE SHELVING SYSTEM



WWW.BCILIBRARIES.COM

The following pages will show basic configurations of the Slimline Shelving System.

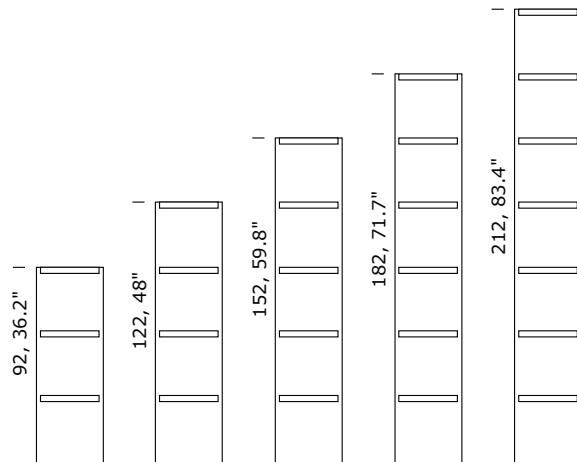


Slimline comes with a 4 mm (3/16") flat front edge of solid wood. The distance between the front edge of the end panel and the front edge of the shelf is 26 mm (1").

Slimline configurations are delivered as standard in light steamed beech veneer, no. 55 or birch veneer, no. 69. They can also be delivered in painted particleboard in any NCS or RAL colour upon request (see Design Options page 6).

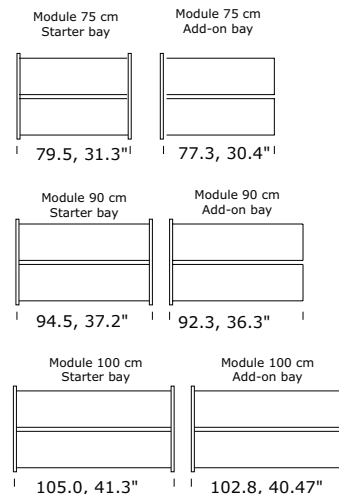
HEIGHTS

Softline shelving comes in 5 heights; 92, 122, 152, 182 and 212 cm (36.2", 48", 59.8", 71.7", 83.4") (36.2", 48", 59.8", 71.7", 83.4") Heights include adjustable feet (max. 2 cm, 3/4"). The shelves are adjustable in 2.5 cm (1") increments.



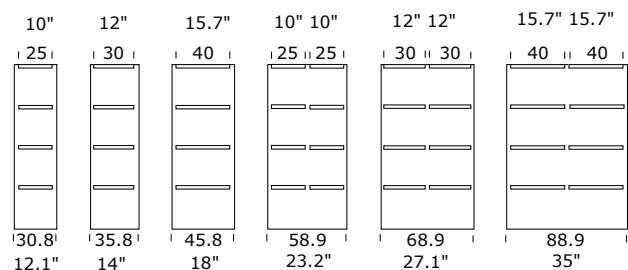
WIDTHS

The bays are available in 75cm (29.53"), 90 cm (35.4") and 100 cm (39.4") modules and as starter and add-on bays. A starter bay has two outside end panels while an add-on bay has one intermediate panel.



DEPTHS

The end panels come in 6 depths: 30.8 cm (12.1") for 25 cm deep shelves, 35.8 cm (14") for 30 cm deep shelves, 45.8 cm (18") for 40 cm deep shelves, 58.9 cm (23.2") for 2 x 25 cm deep shelves, 68.9 cm (27.1") for 2 x 30 cm deep shelves, 88.9 cm (35") for 2 x 40 cm deep shelves



BCI FINISHES

Steel & Enamel Colors

WWW.BCILIBRARIES.COM

BOLD & BRIGHT

	
Mango 237	Mandarin 238
	
Terracotta 239	Oriental Red 240
	
Copper 241	Mulberry Red 206
	
Mahogany 50	Deep Purple 242
	
Coffee 168	Apple Green 90
	
Cobalt Blue 208	Racing Green 74
	
Fjord 212	Forest Green 244
	
Provence Blue 213	Midnight Blue 157
	
Navy 243	

ECO-CHIC

	
Shadow White 223	White 222
	
Steel 220	Pearl 217
	
Graphite Grey 224	Champagne Mist 25
	
Concertina Grey* 229	City Grey 236
	
Gothia Grey 233	
	
Anthracite (New) 235	
	
Charcoal 23	
	
City Black 51	
	
Black Pearl 231	

*Texture

All our colors have a gloss value of 60-80, with the exception of Champagne Mist, which has a gloss value of 25-35.

DESIGN OPTIONS

WOODEN PARTS

(Shelves, end panels, display panels, tops)

The wooden parts can be manufactured in a number of different lacquered wood veneers. Surcharges apply for some veneers



Ash 68



Beech 70



Birch 69



Oak 66



Maple 67

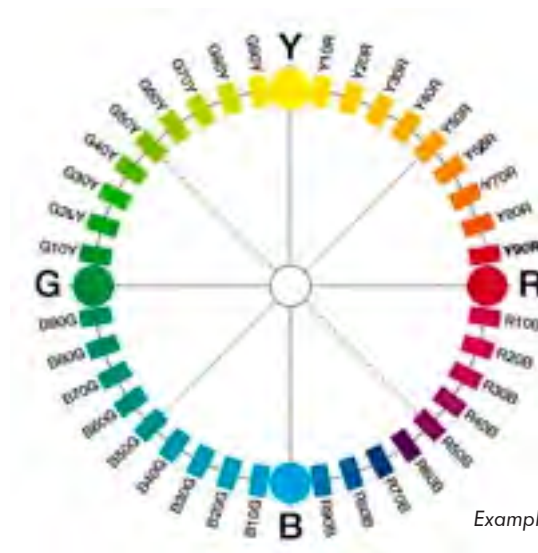


Light steamed beech 55



Cherry 54

The wood veneers can also be stained with an additional surcharge. Samples will be forwarded for approval. The wooden components are available in melamine or laminate with an additional surcharge, please ask for quote. The wooden components can be painted in any NCS colour in gloss 30 to 35 without extra surcharge*.



Examples of NCS colours

*A higher surcharge for colours with "metallic" look or different surface textures must be expected.

Please note that wooden components which are to be painted in other colours may be manufactured in MDF. Please note that our wooden shelves and table tops are manufactured with a stronger paint to resist the wear and tear of books sliding across the painted surface. For maximum robustness we recommend laminated wooden shelves. Please be aware that when painted the slats in display end panels may not be fully covered.



SLIMLINE SHELVING SYSTEM

WWW.BCILIBRARIES.COM



Slimline has straight edges on the end panels; Frontline has straight edges and a "flusher" finish with the front panel and shelves. Additionally, this system offers end panel bays, magazine singles and radius shelving which can create winding shelving bays. The possibilities are endless!



INSTALLATIONS

SLIMLINE SHELVING SYSTEM

WWW.BCILIBRARIES.COM





SLIMLINE SHELVING SYSTEM

WWW.BCILIBRARIES.COM

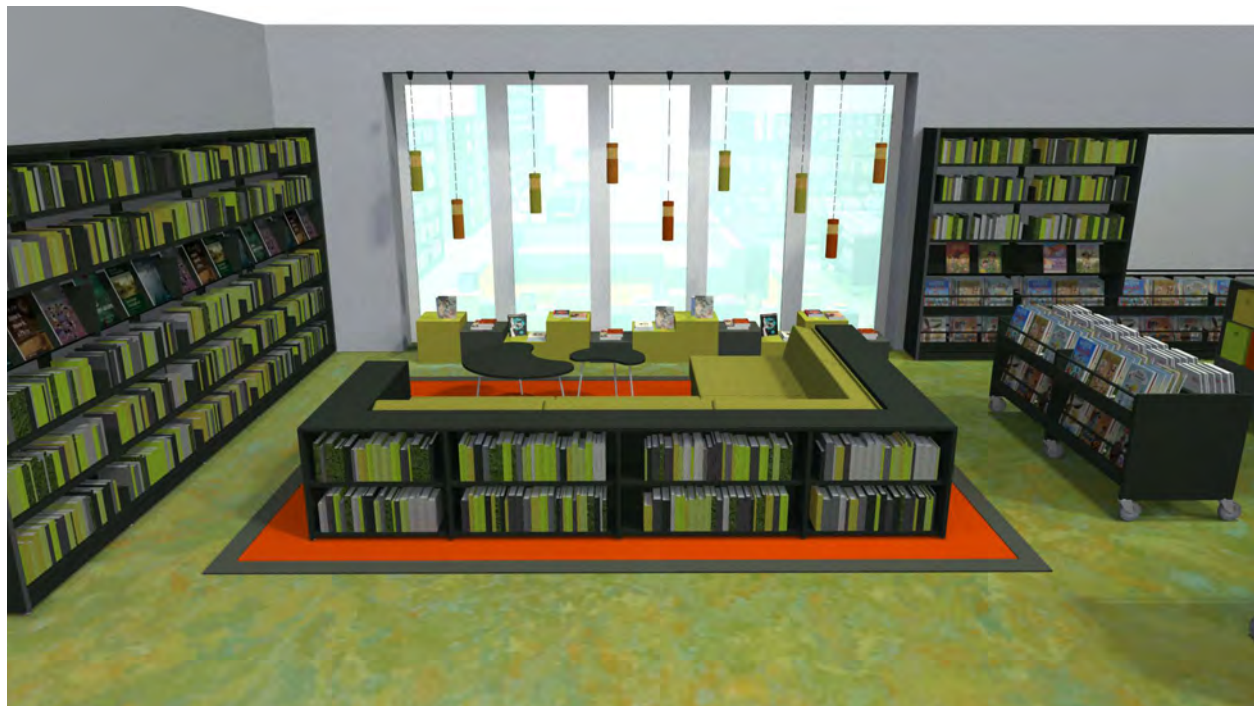


SLIMLINE SHELVING SYSTEM

WWW.BCILIBRARIES.COM



DESIGN



FLEXIBLE LIBRARY SPACES ARE THE KEY TO FUTURE PLANNING

Libraries are no longer simple book warehouses. Today, they serve as interactive technology hubs and creative community learning spaces. Think flexible, functional and interactive... BE INSPIRED!



SLIMLINE SHELVING SYSTEM

WWW.BCILIBRARIES.COM

FACTS

Product details

The Slimline shelving system is available in single- and double-sided in a variety of standard heights, depths and widths. Use either a steel frame or wooden back panel to support the shelving, this makes it easy to add or remove shelving bays without disassembling the other bays. The shelving systems are easy to assemble and no special tools or expert assistance is required.

For the shelving systems we offer a wide range of functions: shelves for backedge book supports, shelves with hanging book supports, sloping shelves, corner shelves, magazine- and multimedia solutions, cabinets, browsers, casters and end panels with e.g. display option. By adding one or more of these functions it is possible to create a tailored shelving system that fits your library's specific needs.



SHELVES

- Horizontal and sloping
- Wood and steel
- With and without backedge

PANELS

- End panels in wood
- Display end panels in wood
- Steel back frame or wooden back panels (veneer, painted or melamine)

ACCESSORIES

- Castors
- Signage
- Lighting
- Book supports
- Display
- Browsers



DIMENSIONS

- Heights: 92/122/152/182/212 cm
- Depths: 25/30/40 cm
- Widths: 75/90/100 cm

