



MISTO POUF

WWW.BCILIBRARIES.COM



Misto

Design: Olav Eldøy & Olav Eldøy

The Misto pallet with its simple, playful design can be used alone or complement other furniture. The handy carrying strap makes Misto easy to move and it solves the need for additional seating. Misto is designed as a stand alone seating arrangement with high comfort and quality.

The stainless steel base protects the upholstery material for cleaning purposes.



Misto pallet and Clint Club table.



Misto

Design: Olav Eldøy & Olav Eldøy

FORA FORM

Wherever people meet.



Misto

Design: Olav Eldøy & Olav Eldøy

Carry strap in black leather.
Pallet in cold cured foam.

Base in stainless steel.
Plastic gliders.

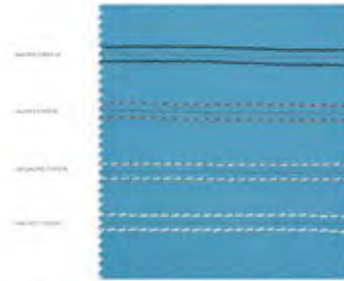
Chassis:



Polished stainless steel

Contrast seam

Real formable contrast seam on selected products with standard seam colors.



Dimensions:

Pallet B: 41 cm D: 41 cm SH: 46 cm (16.1" x 16.1" x 18.1")

Weight: 5.6 kg (12.35 lbs)



Misto

Design: Olav Eldøy & Olav Eldøy

FORA FORM

Wherever people meet.

