

# OCCASIONAL

TABLES

**Price Guide** ◀





## TABLE OF CONTENTS

---

3	General Information
5	Product Specifications
7	Pricing - Occasional Tables

## General Information

---

Sales of In2design products are in accordance with the terms and conditions outlined in this Price List. These terms and conditions may be changed or supplemented only by a separately written document signed and authorized by in2design.

### Prices

The prices published in this Price List, as well as those quoted by in2design shall be suggested List Prices. List Prices are subject to change without prior notice.

List Prices are those that are in effect at time of order receipt. If shipping date requested is more than 90 days from date of order, in2design shall have the right to use the published list prices effective at the time of shipment.

### Taxes

All prices shown in this Price List are exclusive of sales, excise, GST and other applicable taxes. The Purchaser is responsible to remit directly to in2design all such taxes as per the invoice.

A Tax Exemption Certificate (if applicable) must be on file with in2design prior to the product shipment, otherwise, sales tax will be due and payable.

### Payment Terms

All orders are invoiced at time of shipment. Terms of payment are NET thirty (30) days from date of invoice.

In2design shall exercise the right to enforce a charge amounting to 2% per month, or 24% annually on any past due invoice or outstanding balance.

All products sold shall remain the personal property of in2design until fully paid. The purchaser agrees to perform all acts which may be necessary to assure retention of title to such products to in2design until such time as the products have been paid in full.

### Credit

Should the Purchaser fail to fulfill the terms of payment, in2design may defer further shipments until all such payments are made or may, at its option cancel the unshipped balance without prejudice to any other rights which in2design may have against the Purchaser.

Shipments and deliveries shall at all times be subject to approval of the Purchaser's credit.

### Order Placement

In2design requires that all orders be submitted in writing as represented by a valid Purchase Order and accompanied by a layout/drawing to avoid errors and or duplication. The Purchaser is responsible for providing complete and accurate information when placing an order. Orders with incorrect/incomplete information will result in order processing and shipment delays. Product leadtimes will be based upon receipt of a complete and accurate Purchase Order.

### Order Acknowledgement

All orders submitted will be acknowledged. It is the Purchaser's responsibility to review the acknowledgement for accuracy. In the event of an error, the Purchaser must notify in2design immediately (within 48 hours) in writing by fax or e-mail.

### Delivery Dates

In2design shall exercise its best efforts to deliver within the date specified on the Acknowledgement. In2design shall not incur any obligation or liability to the Purchaser for delay or failure to deliver goods due to causes beyond our control.

### Order Changes & Cancellations

Any changes to the original Purchase Order must be received in writing within 48 hrs of the order acknowledgement. Any change to the original Purchase Order beyond the 48 hrs will result in re-scheduling and subject to a restocking charge commensurate with the incurred production costs.

All orders are considered firm and not subject to cancellation by the Purchaser without the written consent of in2design. Special order items and COM items are not subject to changes or cancellation under any circumstances.

### COM Orders

A request for non-standard material (laminated) must be approved prior to acceptance of an order. Material must be shipped prepaid to in2design Customer Service Team and properly identified. Performance of COM is the sole responsibility of the Purchaser.

### Errors & Omissions

All quotations, acknowledgements and invoices are subject to corrections for any errors and omissions.

### **Shipping & Delivery**

All products are sold F.O.B. in2design's Manufacturing Facility: Vaughan Ontario, unless otherwise stated and agreed.

The Purchaser will determine the method of transportation and the routing of shipment.

### **Shipping & Delivery**

All deliveries will be dock-to-dock, unless otherwise specified.

### **Shipment Claims**

In2design carefully prepares and inspects all products for safe shipment. Legal title to merchandise passes to the Purchaser upon acceptance by the carrier. Inspect all cartons upon delivery.

It is the responsibility of the Purchaser to examine goods upon receipt and to file any claims with the carrier for losses or damage to the product. Details of visible damage should be noted on the delivery receipt. Product shortages must be noted on delivery receipts at the time of delivery and immediately reported to the carrier for correction.

Failure to make any claims against in2design within 10 days shall constitute acceptance of the products and a waiver of any defects, errors or shortages discovered upon inspection.

### **Product Returns**

No return of product will be accepted without the written consent of in2design. Any shipment returned without prior written approval will be refused and returned to the sender freight collect. If approved, a minimum restocking charge of 35% of the original net price shall be charged on returns for credit or refund provided the goods are received in original factory condition.

### **Storage**

In the event the Purchaser requests postponement of the shipment beyond the scheduled delivery date, in2design, in2design may transfer product to storage at the Purchaser's risk and expense. Upon such transfer, the Purchaser assumes risk of loss or damage.

### **Product Warranty**

In2design warrants its products to be free from defects in material and workmanship for a period of ten (10) years from the date of delivery. This warranty extends only to original Purchasers acquiring the product directly from Authorized Dealers and shall apply to product(s) installed by Authorized installers.

This warranty does not extend to C.O.M. applied to in2design products, or products which have been modified or installed contrary to recommended application and installation guidelines.

In2design will not authorize any warranty, parts or labour without the appropriate warranty numbers. All claims with respect to products alleged to be defective must be made within ten (10) days and submitted in writing.

This warranty excludes normal wear and tear, damages caused during shipment or storage; damage due to accident; improper use, negligence or willful abuse; unauthorized alterations or improper installation.

In2design extends no other warranties, expressed or implied, including warranty of merchantability or fitness for a particular purpose. In2design shall not be liable for loss of time, inconvenience, commercial loss, incidental or consequential damages.

### **Customer Satisfaction**

Our goal is to provide the very best service to our customers and to ensure complete product and performance satisfaction. We will exercise our best efforts to achieve this goal.

### **Quality Standards**

All in2design products are ANSI/BIFMA tested and manufactured to ISO 9001 Quality Standards.

# Product Specifications

## Occasional Tables

All Modules are available in Melamine Laminate (ML), High Pressure Laminate (HPL) and Brite White (BW) in a vast selection of finishes.

All Frames are 3/4" thick. All Frame edges are seamlessly finished with matching 1mm thick PVC edgebanding providing durability and user safety.

The shelf openings provide 7" height clearance.

Standard height for Occasional Tables is 20". Available in various widths and depths.

## Glass Tops

Tempered 1/4" thick clear glass supported by four (4) glass holders.

## Power Centres

Contemporary style power solution, constructed of durable die-cast zinc finished in Metallic Silver powder coat. Standard with 2 simplexes, 6 Ft. 15 Amp cord, one touch accessibility, UL Listed.

## Connections

Metal-to-Metal mini-fix and Dowel Joinery connections. All hardware is included. Each Module is shipped ready to be assembled.

## Furniture Feet

Each Module is equipped with four (4) brushed steel adjustable furniture feet. Foot adjustment is from bottom up. The Foot Cylinder Remains Fixed against the Top Plate.

## Woodgrain Direction

Standard Woodgrain Direction for End Panels and Fascias is "vertical", direction for Tops and Shelves is horizontal.

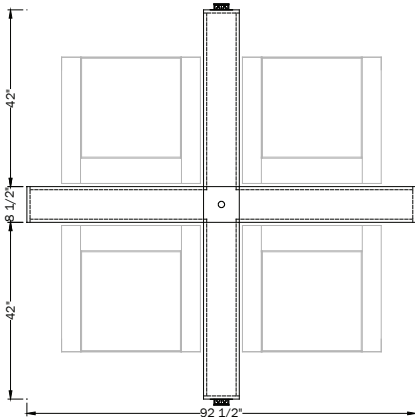
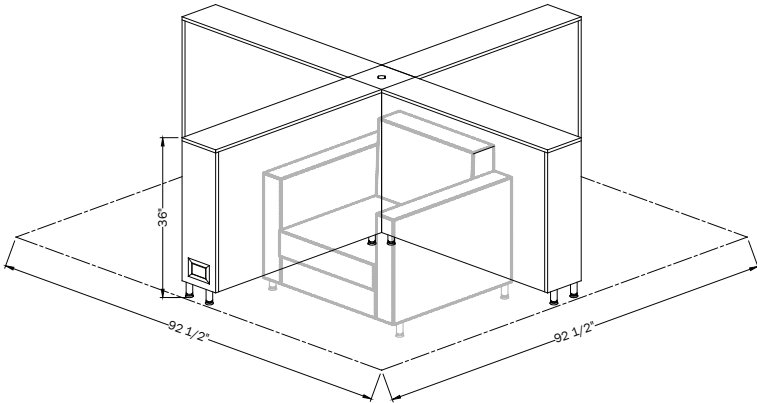
## Finish Options

Please consult with your In2design Representative.

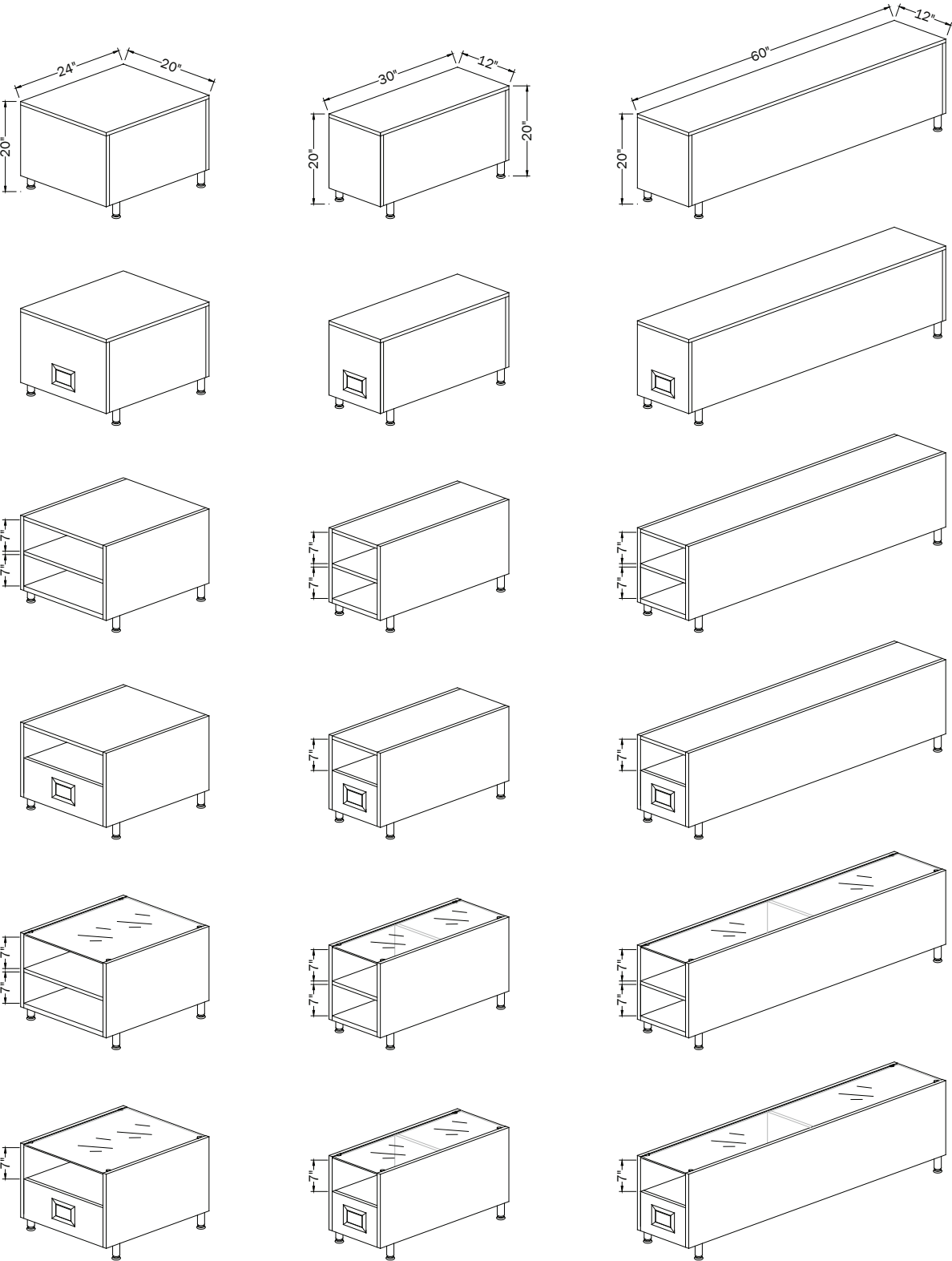
## Product Codes

Product codes contained herein identify the product category, product size and product attributes. Laminate finish selections are required to complete the product code.

## Chair Dividers - Product Overview



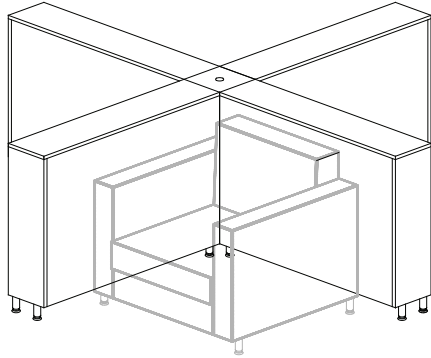
Occasional Tables - Product Overview



# Occasional Tables

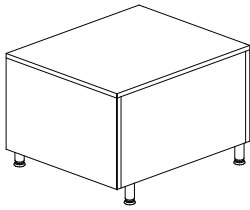
Description	Product Code	ML Price	HPL Price	BW Price	Dimensions			Weight	Cubic Feet
					W	D	H		

## 36" H Chair Divider



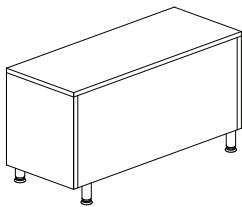
CDQ4	4280	5265	5985	93	93	36	277	30
------	------	------	------	----	----	----	-----	----

## 24" End Table



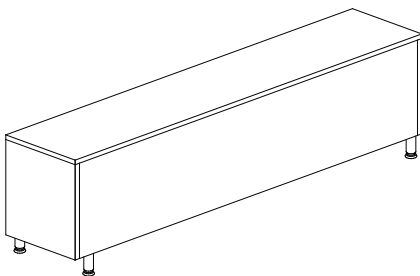
TET 202420	760	1075	1315	20	24	20	45	5.6
------------	-----	------	------	----	----	----	----	-----

## 30" End Table



TET 123020	850	1165	1415	12	30	20	38.5	4.2
------------	-----	------	------	----	----	----	------	-----

## 60" Sofa Table



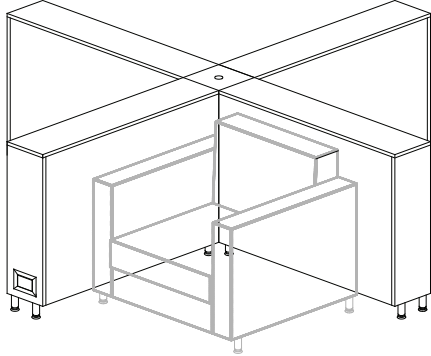
TST 126020	1100	1595	1970	12	60	20	65	8.4
------------	------	------	------	----	----	----	----	-----



# Occasional Tables

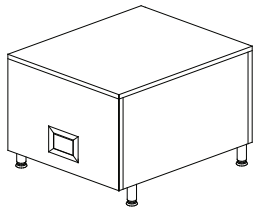
Description	Product Code	ML Price	HPL Price	BW Price	Dimensions			Weight	Cubic Feet
					W	D	H		

## 36" H Chair Divider with Power



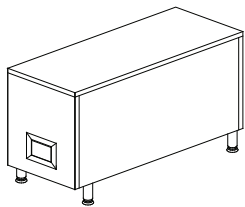
CDQ4 P	4900	5885	6605	93	93	36	280	30
--------	------	------	------	----	----	----	-----	----

## 24" End Table with Power



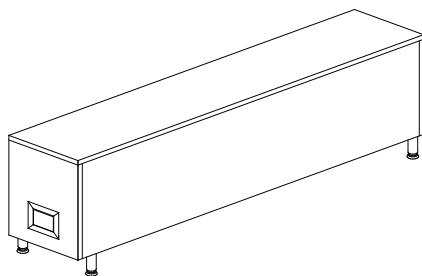
TET 202420 P	1070	1385	1625	20	24	20	47	5.6
--------------	------	------	------	----	----	----	----	-----

## 30" End Table with Power



TET 123020 P	1160	1475	1725	12	30	20	40	4.2
--------------	------	------	------	----	----	----	----	-----

## 60" Sofa Table with Power

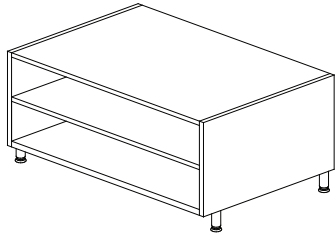


TST 126020 P	1750	2245	2620	12	60	20	67	8.4
--------------	------	------	------	----	----	----	----	-----

## Occasional Tables

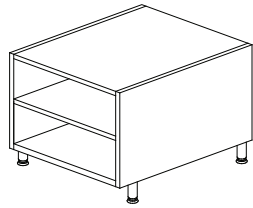
Description	Product Code	ML Price	HPL Price	BW Price	Dimensions			Weight	Cubic Feet
					W	D	H		

### 36" Coffee Table



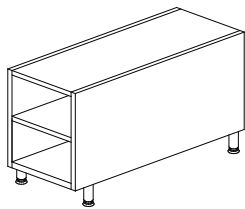
TCT 362420	1060	1575	1960	36	24	20	69	10
------------	------	------	------	----	----	----	----	----

### 24" End Table with Open Shelves



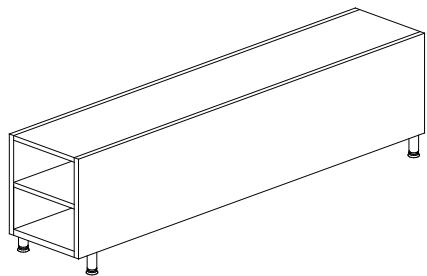
TET 202420 S	780	1105	1350	20	24	20	45	5.6
--------------	-----	------	------	----	----	----	----	-----

### 30" End Table with Open Shelves



TET 123020 S	875	1210	1465	12	30	20	33.5	4.2
--------------	-----	------	------	----	----	----	------	-----

### 60" Sofa Table with Open Shelves

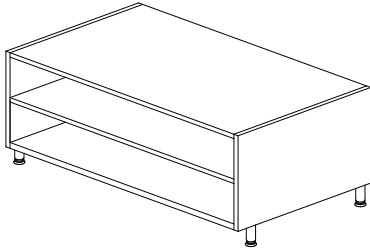


TST 126020 S	1185	1765	2190	12	60	20	62	8.4
--------------	------	------	------	----	----	----	----	-----

## Occasional Tables

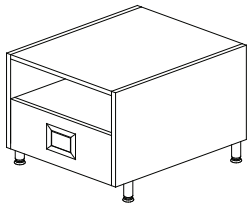
Description	Product Code	ML Price	HPL Price	BW Price	Dimensions			Weight	Cubic Feet
					W	D	H		

### 42" Coffee Table



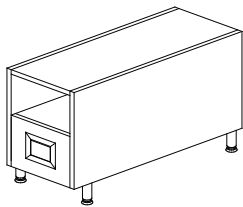
TCT 422420	1145	1720	2145	42	24	20	77	11.7
------------	------	------	------	----	----	----	----	------

### 24" End Table with Open Shelf & Power



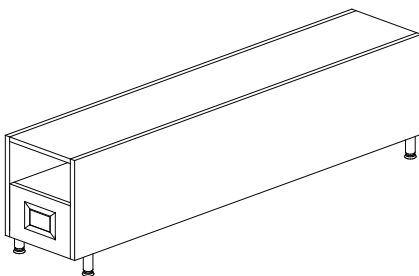
TET 202420 SP	1090	1415	1660	20	24	20	50	5.6
---------------	------	------	------	----	----	----	----	-----

### 30" End Table with Open Shelf & Power



TET 123020 SP	1185	1520	1775	12	30	20	45	4.2
---------------	------	------	------	----	----	----	----	-----

### 60" Sofa Table with Open Shelf & Power

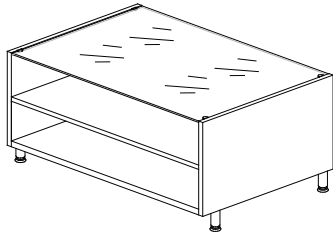


TST 126020 SP	1835	2415	2840	12	60	20	65	8.4
---------------	------	------	------	----	----	----	----	-----

## Occasional Tables

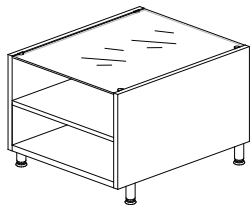
Description	Product Code	ML Price	HPL Price	BW Price	Dimensions			Weight	Cubic Feet
					W	D	H		

### 36" Coffee Table with Glass Top



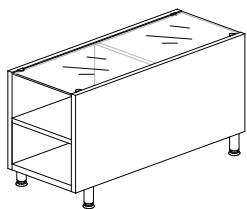
TCT 362420 G	1425	1970	2440	36	24	20	69	10
--------------	------	------	------	----	----	----	----	----

### 24" End Table with Glass Top



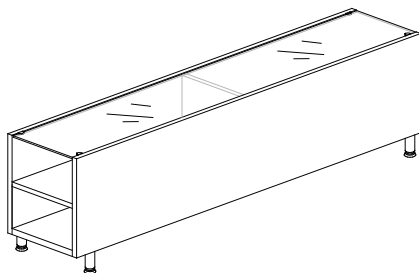
TET 202420 G	890	1215	1495	20	24	20	45	5.6
--------------	-----	------	------	----	----	----	----	-----

### 30" End Table with Glass Top



TET 123020 G	895	1220	1505	12	30	20	33.5	4.2
--------------	-----	------	------	----	----	----	------	-----

### 60" Sofa Table with Glass Top

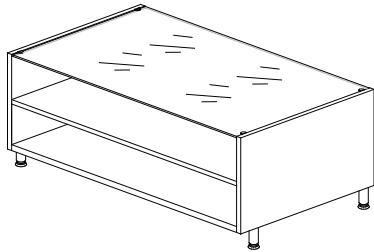


TST 126020 G	1245	1800	2275	12	60	20	62	8.4
--------------	------	------	------	----	----	----	----	-----

## Occasional Tables

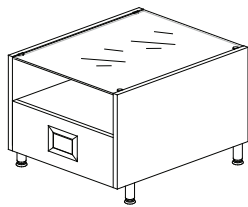
Description	Product Code	ML Price	HPL Price	BW Price	Dimensions			Weight	Cubic Feet
					W	D	H		

### 42" Coffee Table with Glass Top



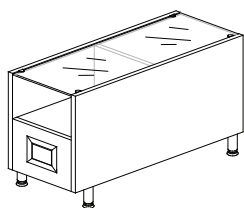
TCT 422420 GP	1590	2140	2635	42	24	20	77	11.7
---------------	------	------	------	----	----	----	----	------

### 24" End Table with Glass Top & Power



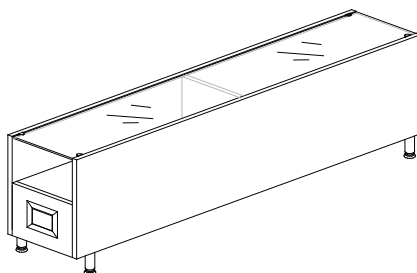
TET 202420 GP	1200	1525	1805	20	24	20	50	5.6
---------------	------	------	------	----	----	----	----	-----

### 30" End Table with Glass Top & Power



TET 123020 GP	1205	1530	1815	12	30	20	45	4.2
---------------	------	------	------	----	----	----	----	-----

### 60" Sofa Table with Glass Top & Power



TST 126020 GP	1865	2420	2895	12	60	20	65	8.4
---------------	------	------	------	----	----	----	----	-----

